

# (n)Code Applet-less PKI component Help Document

## Contents

Prerequisite.....	2
Steps to install the setup. ....	3
Steps to uninstall / re-install .....	5
Import security certificate (if you are not able to use applet less PKI component) .....	6
Debugging Applet-less PKI component.....	12
For any support email .....	12

nCode Solutions

## Prerequisite

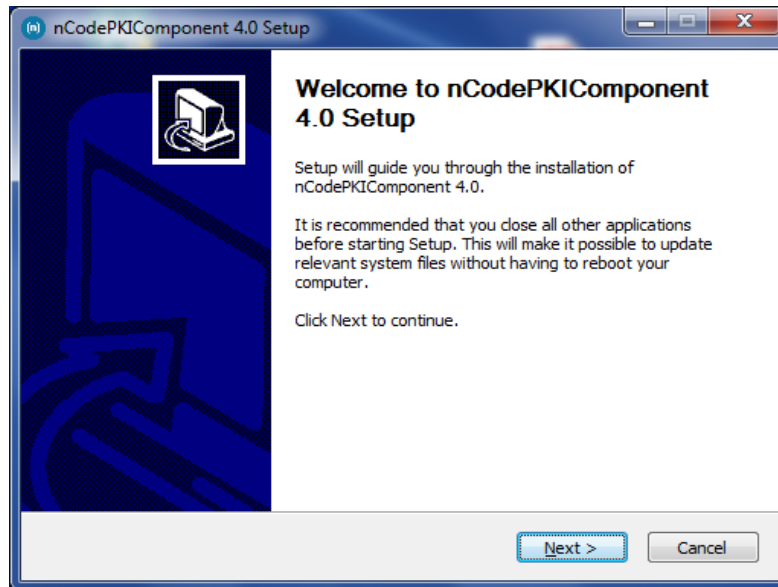
- Java 1.8 or above
- Local system admin rights
  - Note: do not run as “run as administrator”.
  - Must not ask for any username or password while installation

(n)Code Solutions

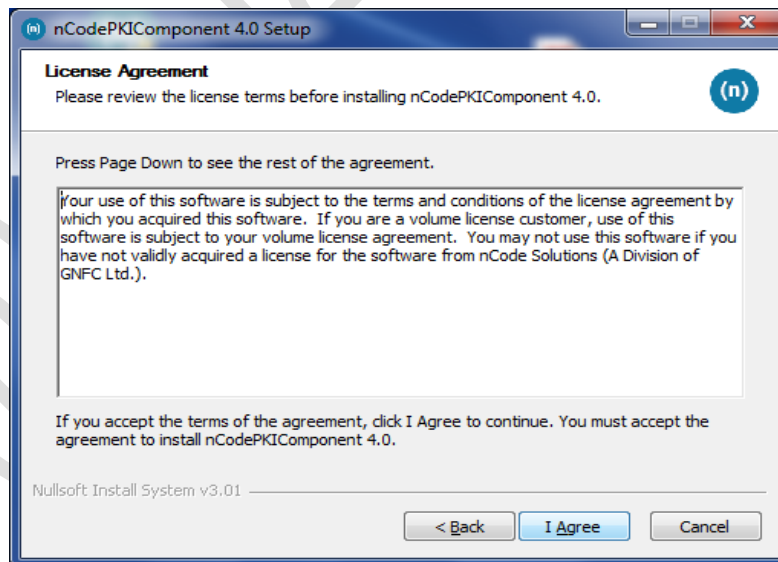
## Applet-less PKI component Help document

### Steps to install the setup.

- Click on nCodePKIComponent setup, popup will be shown as below.

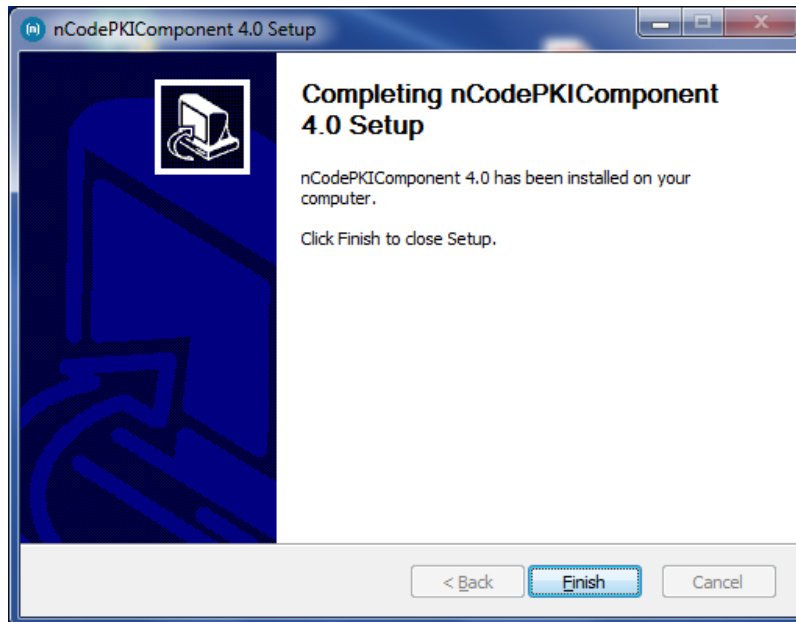


- Click on next, Agree on terms and condition.

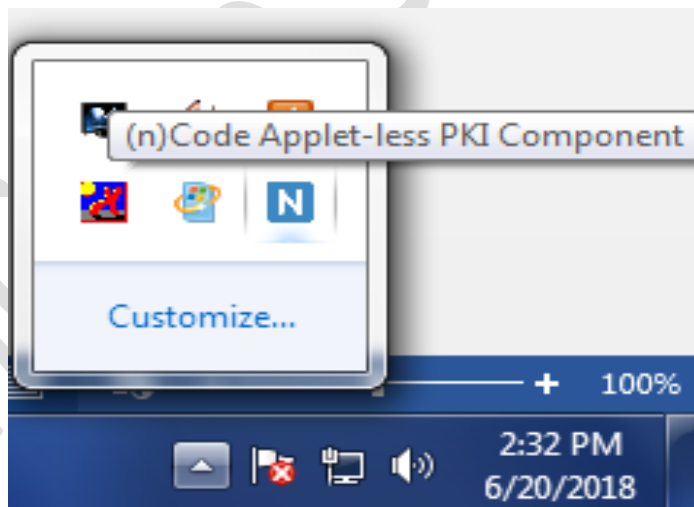


## Applet-less PKI component Help document

- Click on finish.



After you click the finish button Applet-less pki component will run automatically and you will get icon in the system tray



## Steps to uninstall / re-install

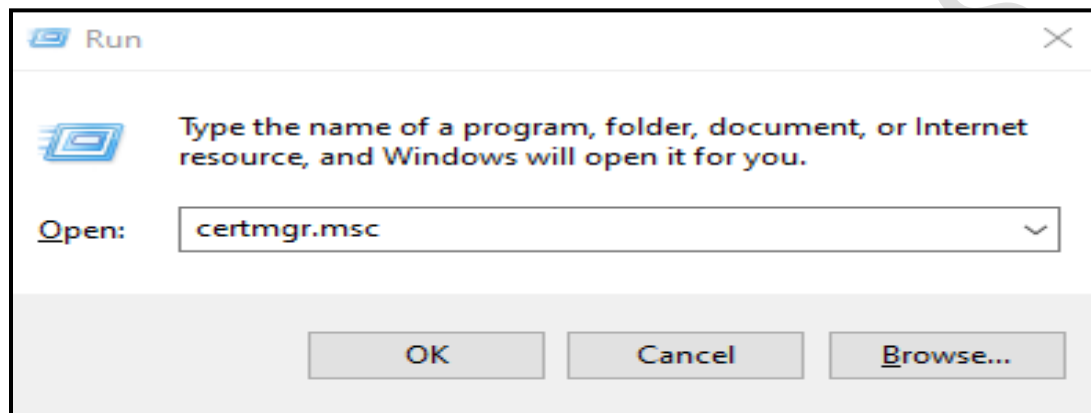
- Go to **control panel >> add / remove program >>** search for **nCodePKIComponent V4.0**
- Right-click on **nCodePKIComponent V4.0** and
- Select **uninstall / change** which will open a wizard
- Follow wizard to uninstall **nCodePKIComponent V4.0**
- Right-click on **Remove\_OLD\_Settings.bat** (which you have already downloaded with the installer) and **run as administrator** to remove configuration if any remain.
- Install **nCodePKIComponent V4.0** using the setup to use it once again

nCode Solutions

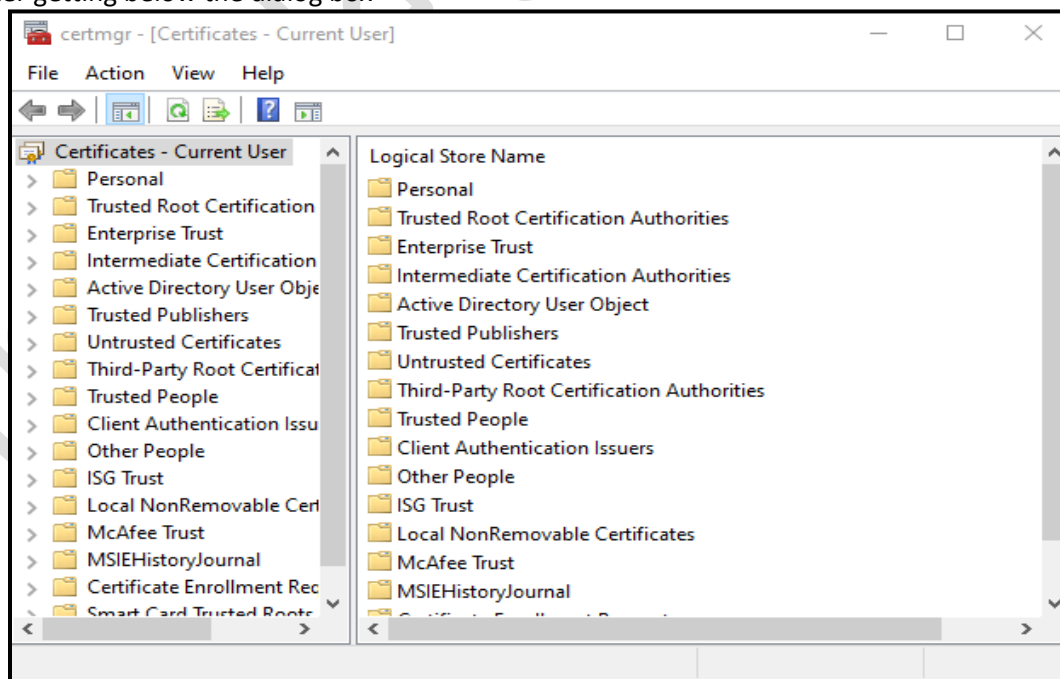
## Applet-less PKI component Help document

### Import security certificate (if you are not able to use applet less PKI component)

- Close all browsers open in the system.
- Save **localhost.crt** in the system which is shared with this help document.
- Click **WIN + R** (to open the run command), after the dialog box is open
  - Write **certmgr.msc** in run command and press enter or click on the OK button

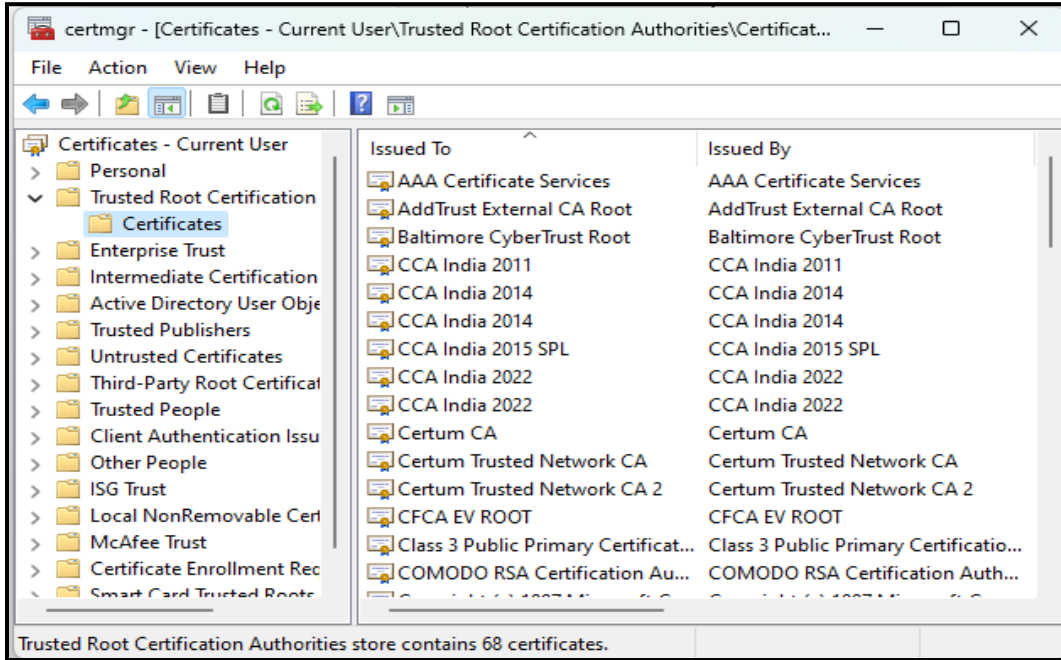


- It will open a new dialogue box as shown below
- After getting below the dialog box

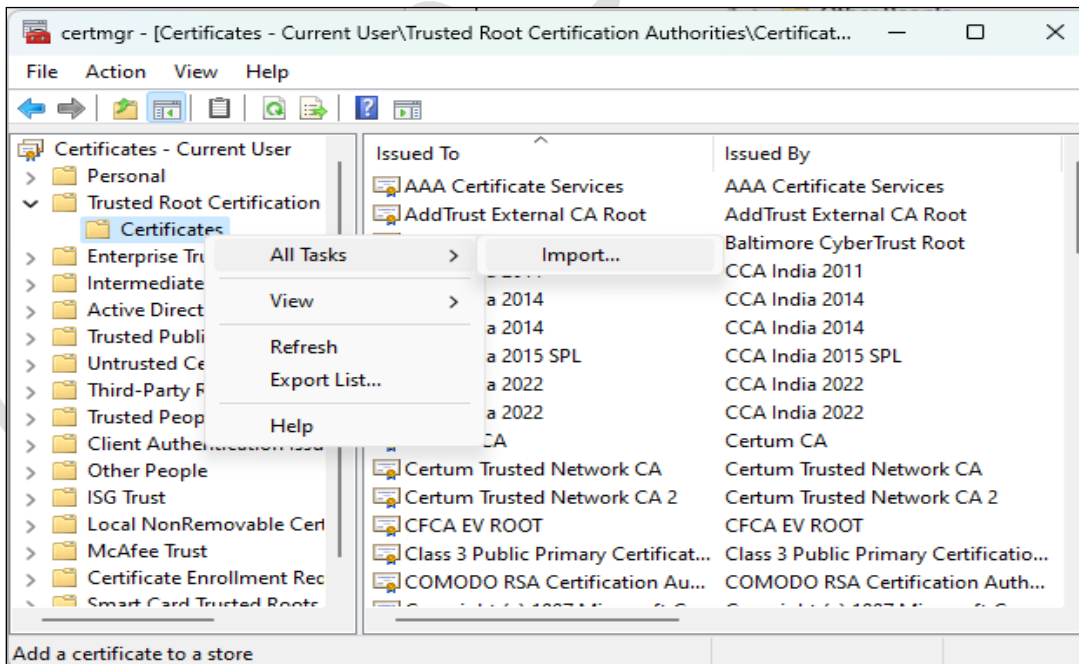


## Applet-less PKI component Help document

- Go to “Trusted Root Certification” >> “Certificates”



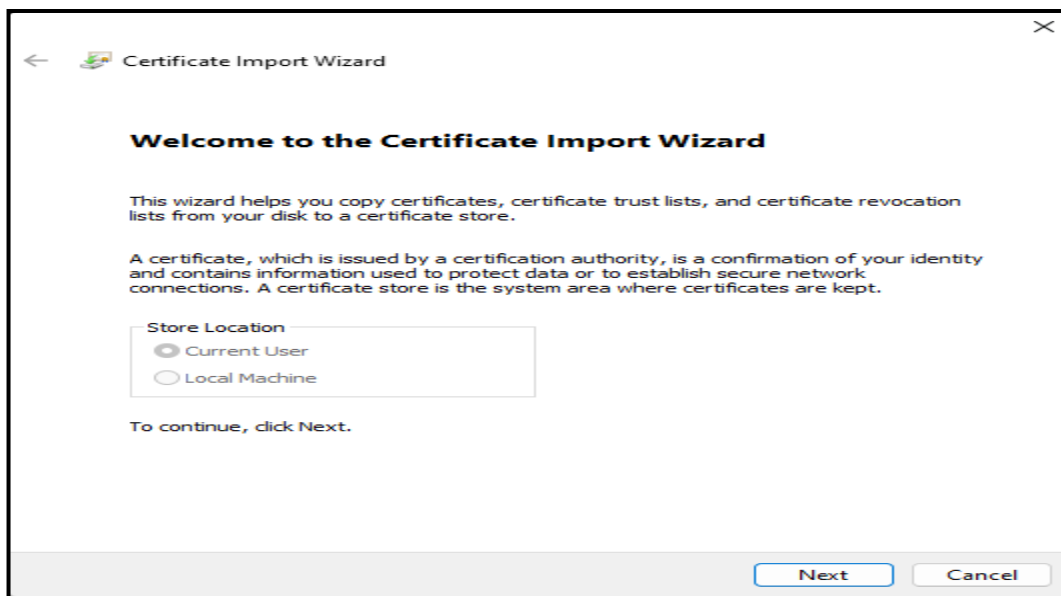
- Right Click on “Certificates” go to >> “All Tasks” > “Import...”
  - It will open the wizard as shown in 7



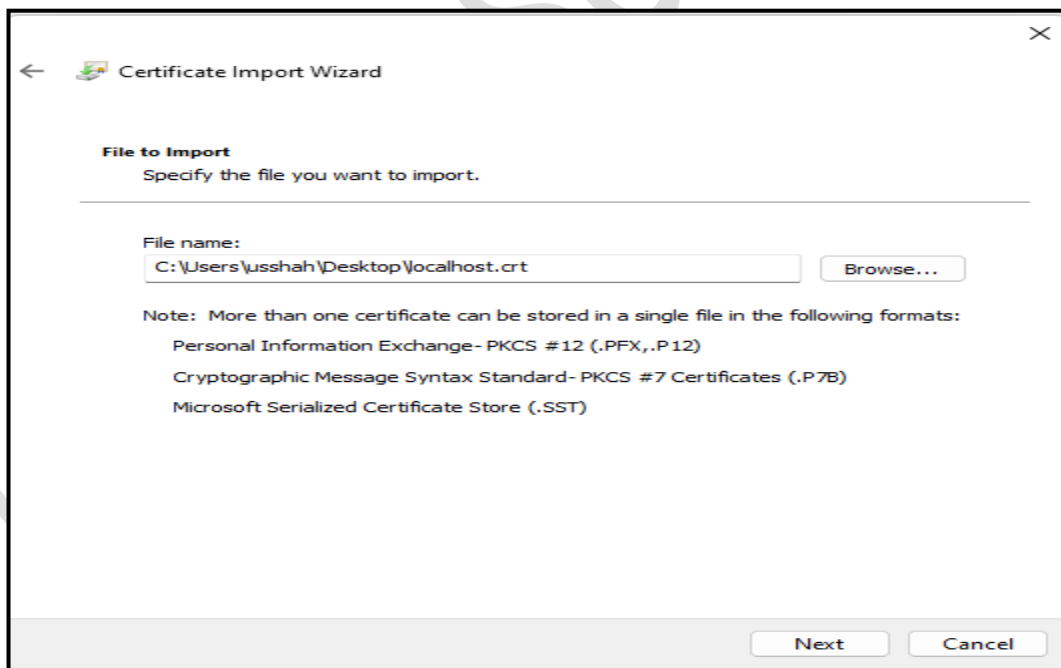


## Applet-less PKI component Help document

- Follow Certificate import wizard to import “localhost.crt” file in your “Trusted Root Certification authority”

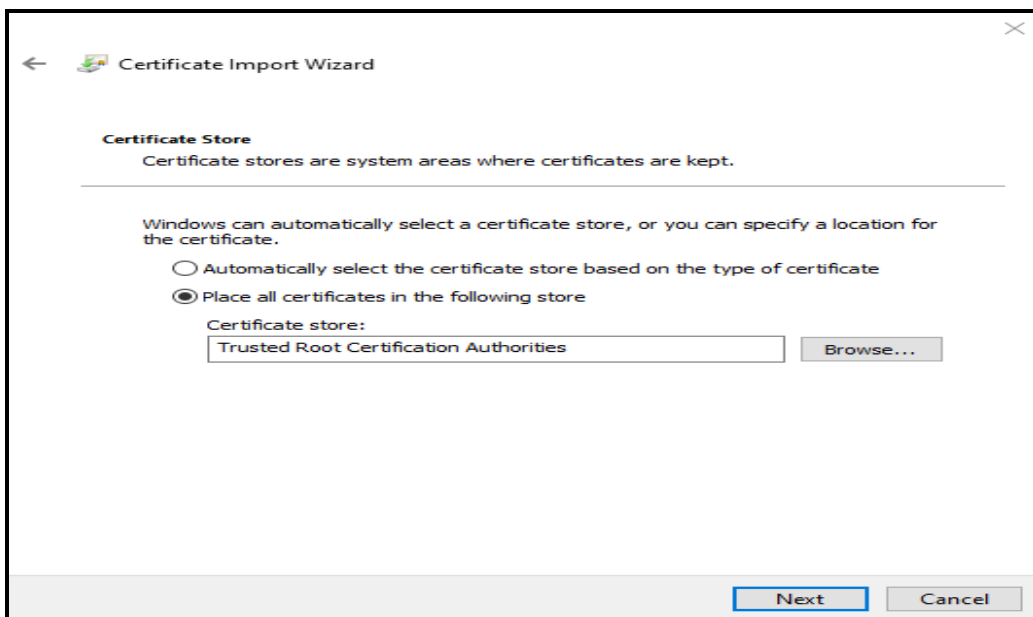


- Click Next to continue

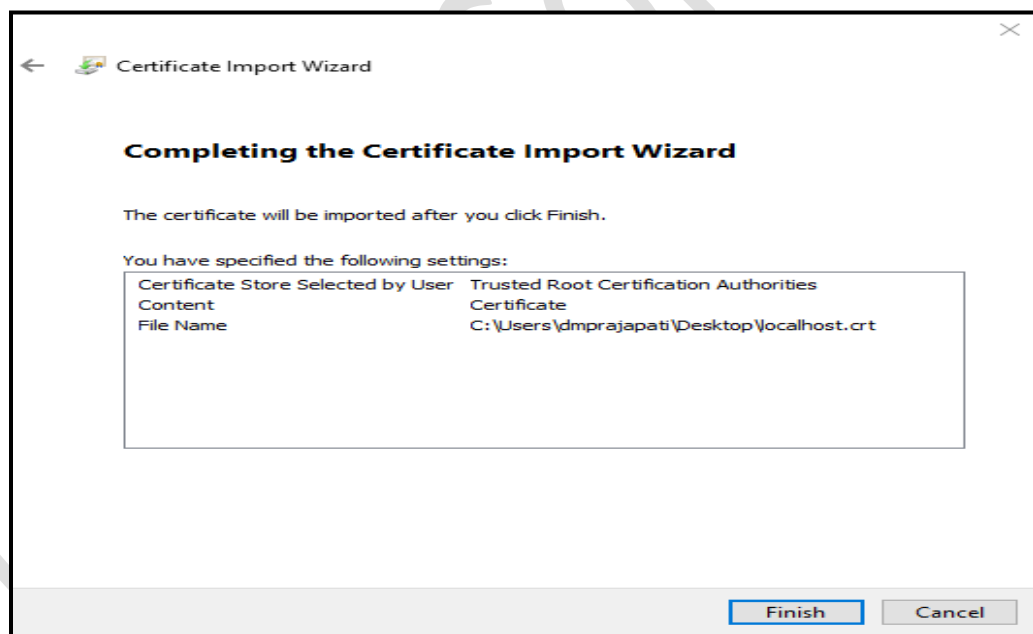


- Select “localhost.crt” file and click Next

## Applet-less PKI component Help document



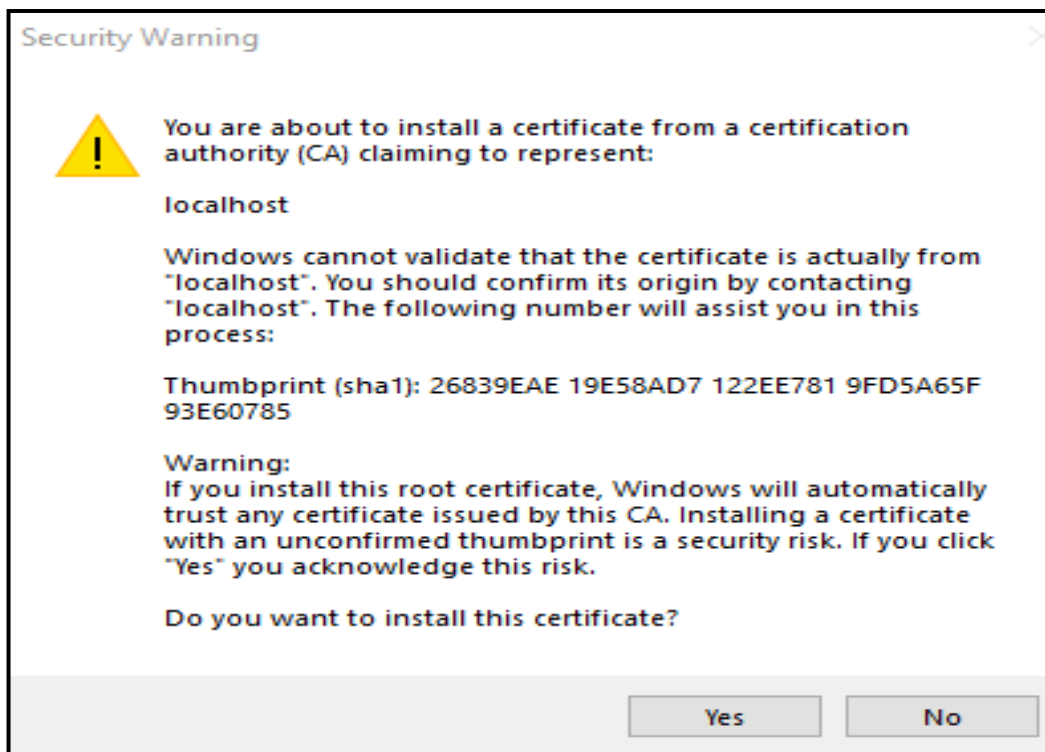
- Click Next to continue



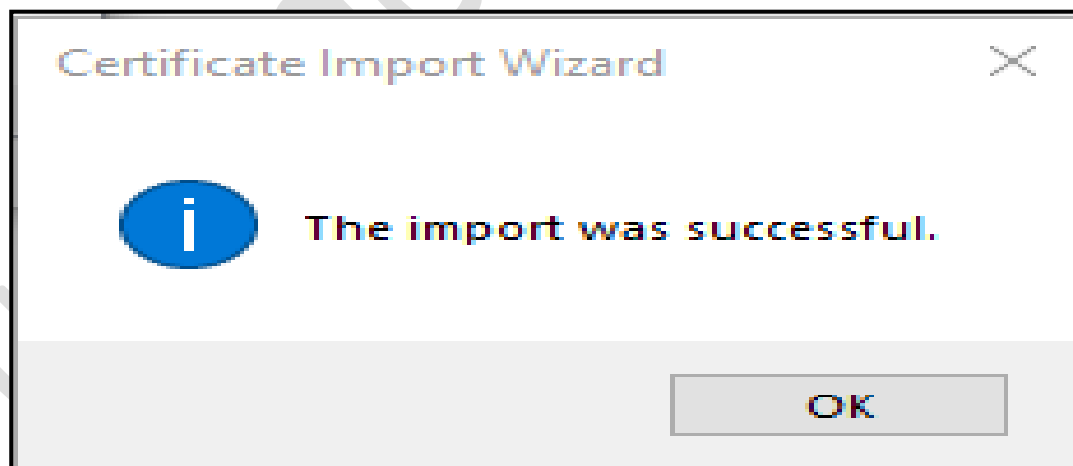
- Then click on Finish

## Applet-less PKI component Help document

- You will get one more dialog box as show below
  - Click on Yes



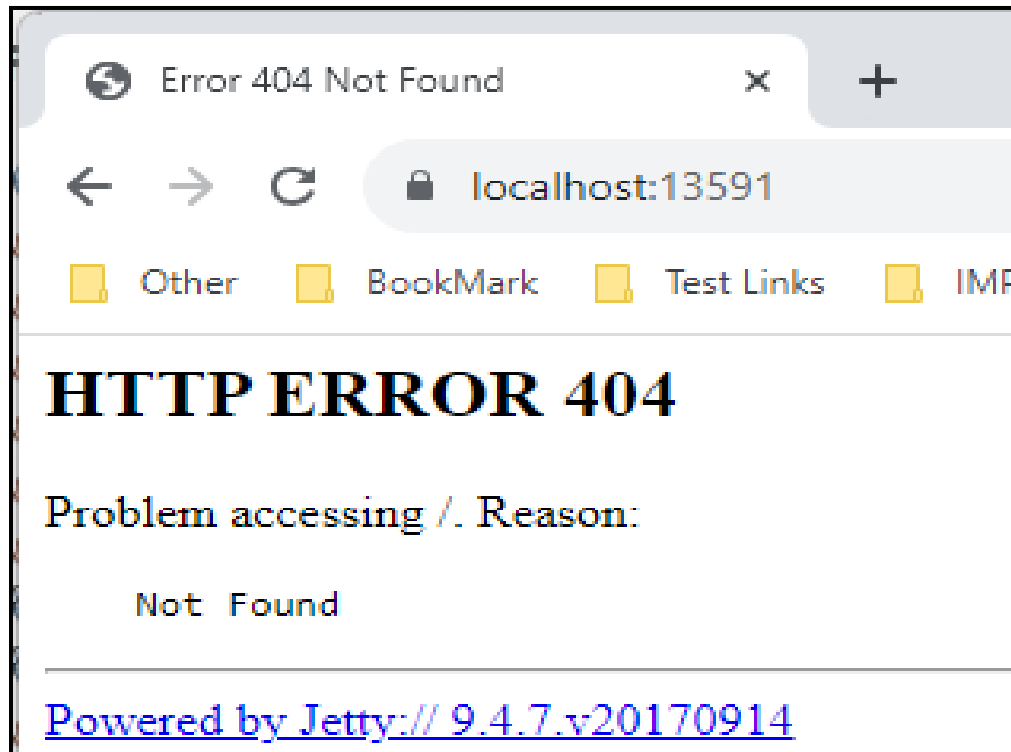
- After that you will get message "The import was successful"



- Close all open windows

## Applet-less PKI component Help document

- Open Chrome web browser
  - Try to access the following URL <https://localhost:13591/>
  - **If you are getting the following message changes are applied successfully.**



## Debugging Applet-less PKI component

- Go to the PKI component installation folder :
  - For 64-bit system
    - Close already running PKI component from the system tray (near system date & time)
    - C:\Program Files\nCodePKIComponent\
      - Search for **run\_64.bat** file
      - Double click on **run\_64.bat**
        - it will open a command prompt and PKI component in debug mode
  - For 32-bit system
    - Close already running PKI component from the system tray (near system date & time)
    - C:\Program Files\nCodePKIComponent\
      - Search for **run\_32.bat** file
      - Double click on **run\_32.bat**
        - it will open a command prompt and PKI component in debug mode
- You will see the PKI component logs in the command prompt
  - Copy-paste command prompt content in a text file and send it to us.
  - Note : do not share screen shot of command prompt