

## System Requirements:

- ✓ Windows 7 or above
- ✓ Internet Explorer version 8.0 or above
- ✓ Latest version of 32 bit Java to be installed in the computer (irrespective of the system configuration).
- ✓ Class III Signing type Digital Signature Certificate.

## System Configuration:

System should be accessed in “administrator” mode only.

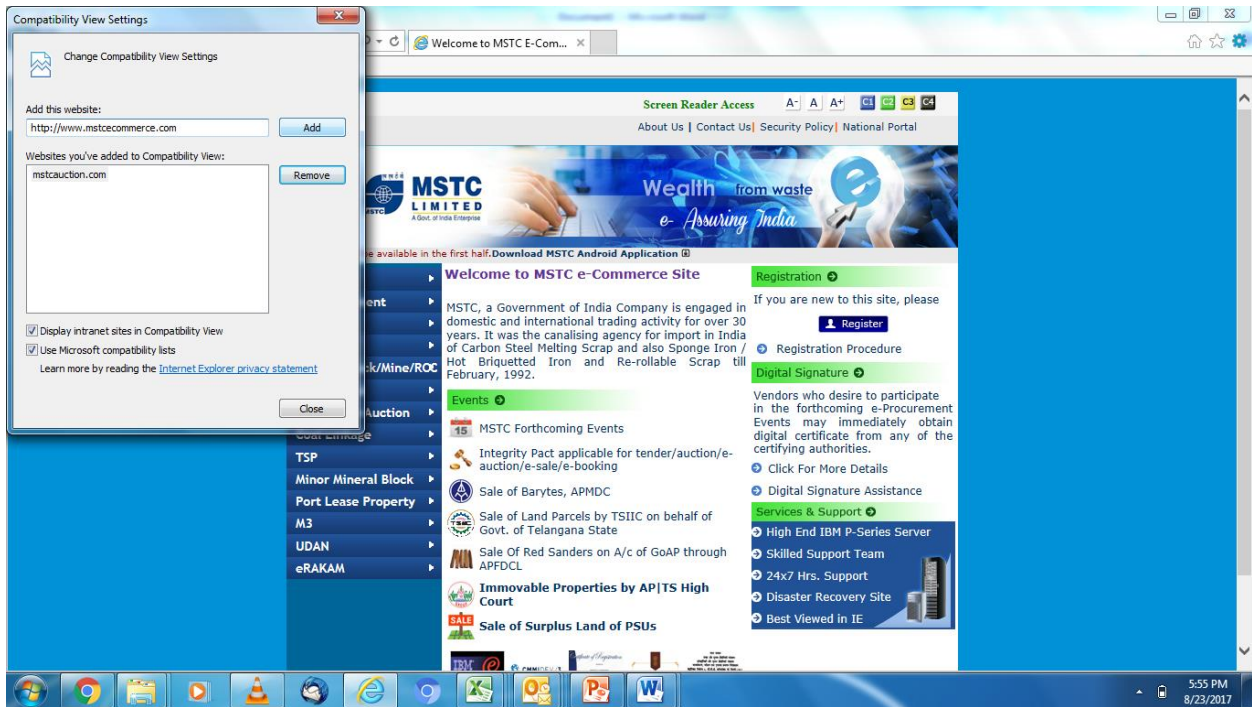
Our site is best viewed in Internet Explorer 8.0 or above only.

## In Internet Explorer do the following settings:

**Tools > Internet Options**

**Add <https://www.mstcecommerce.com> to compatibility view.**

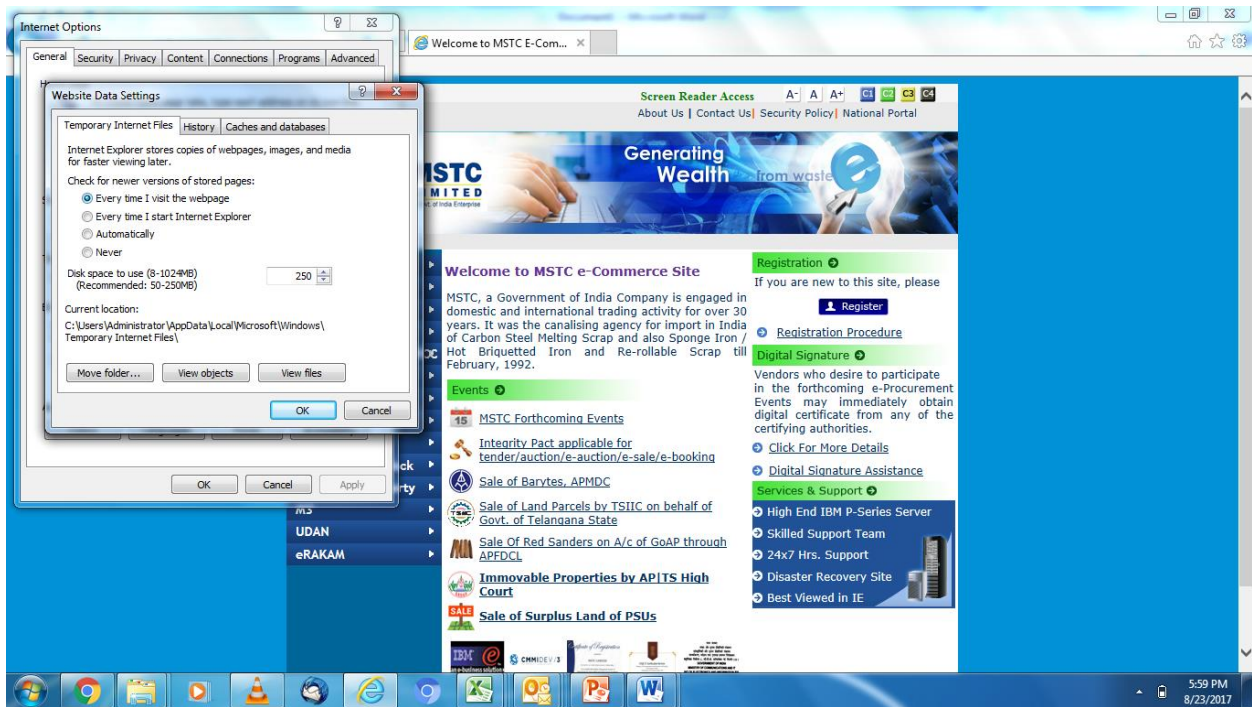




Tools > Internet Options > General > Browsing history > Settings >

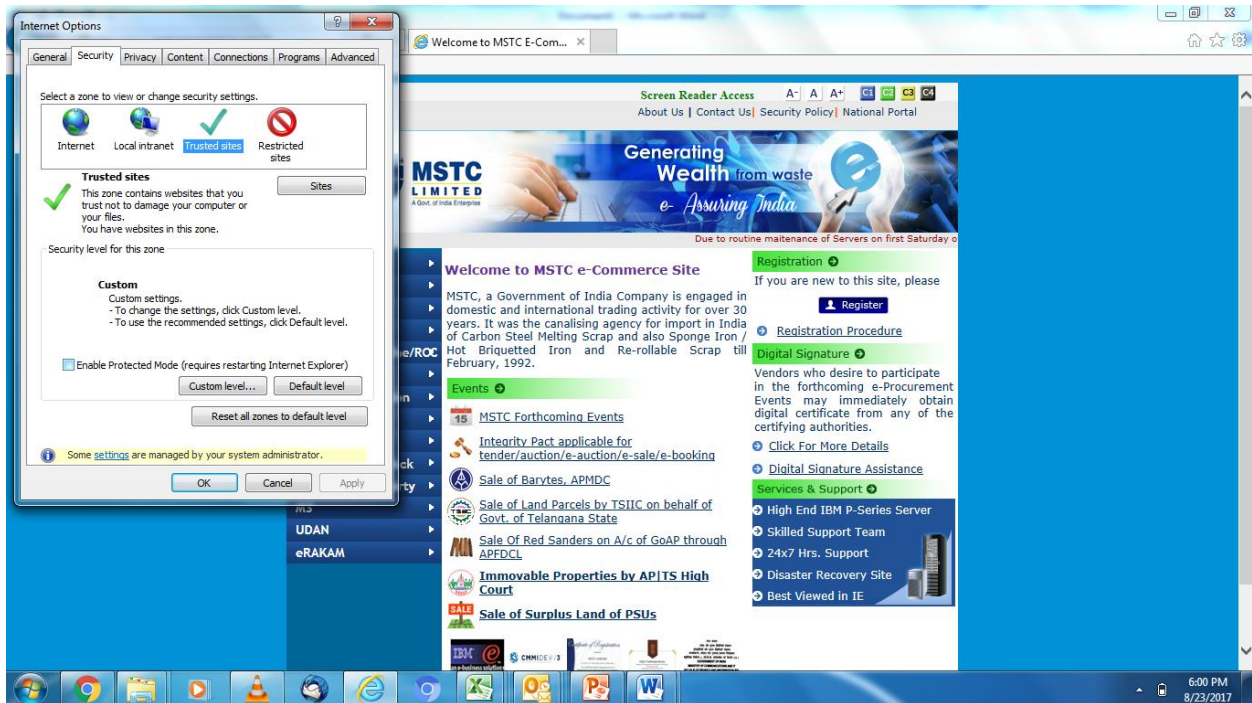
Click on "Everytime I visit the webpage"





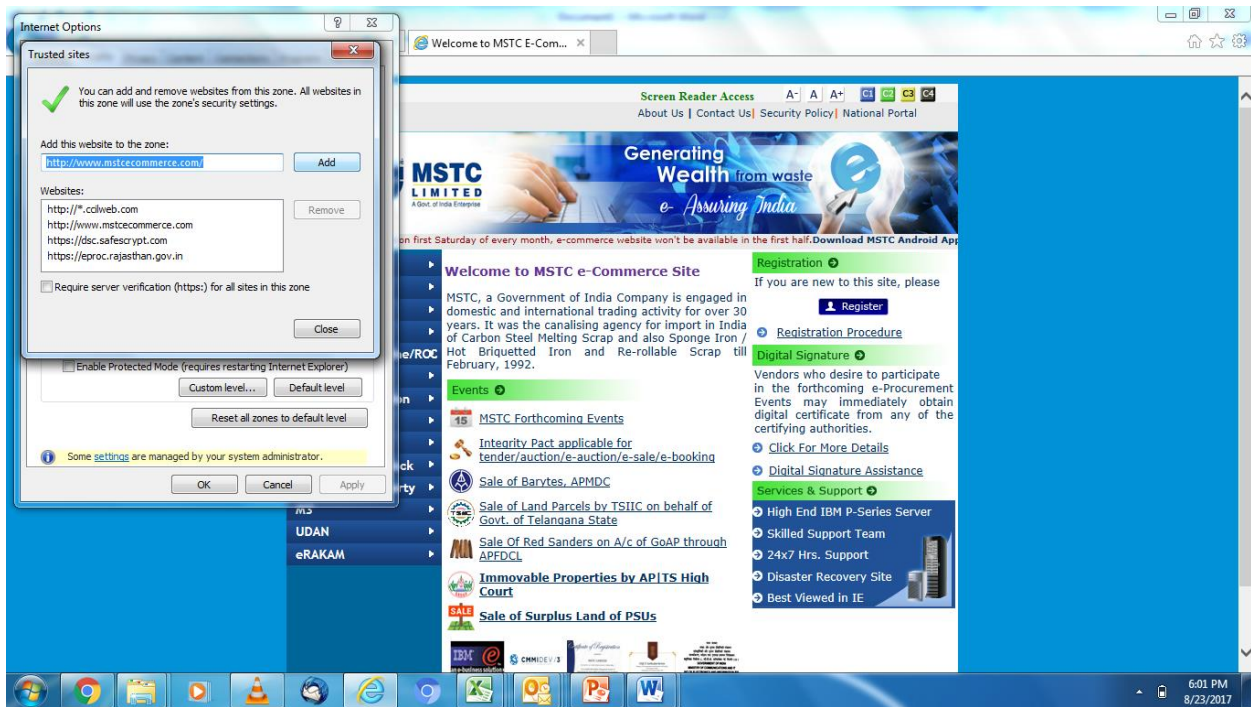
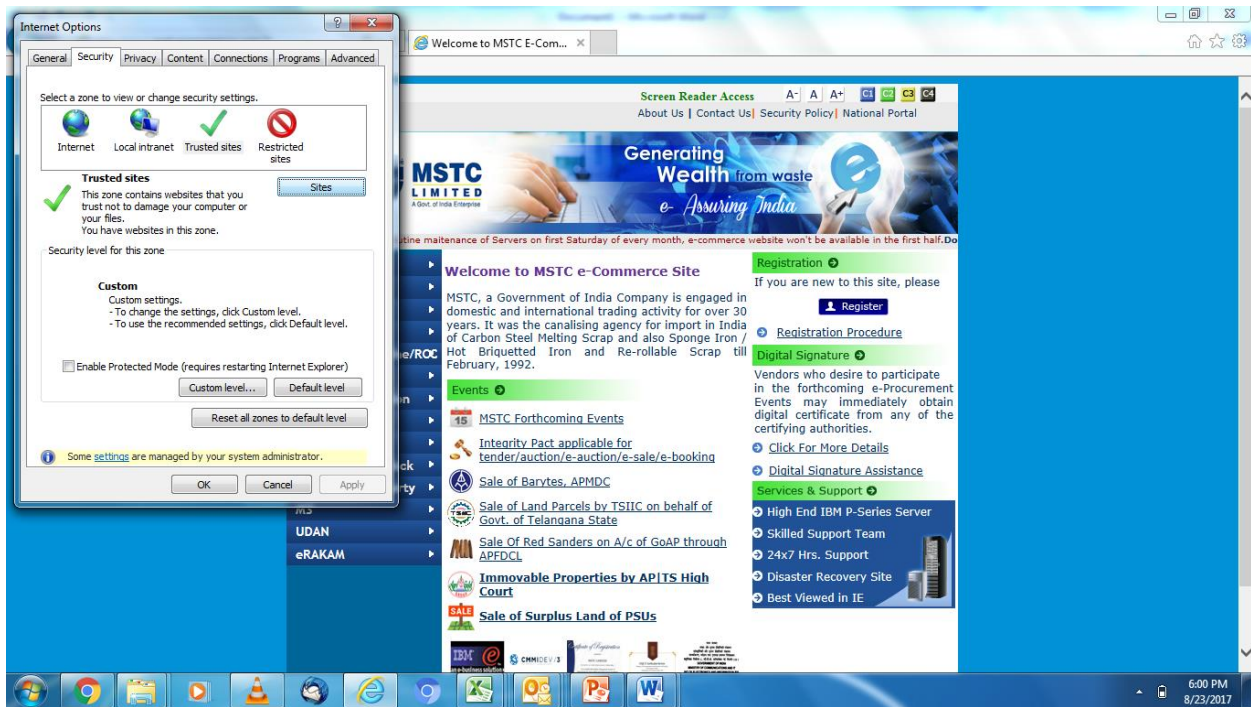
Tools > Internet Options > Security > Trusted Sites

Uncheck "Enable Protected Mode".



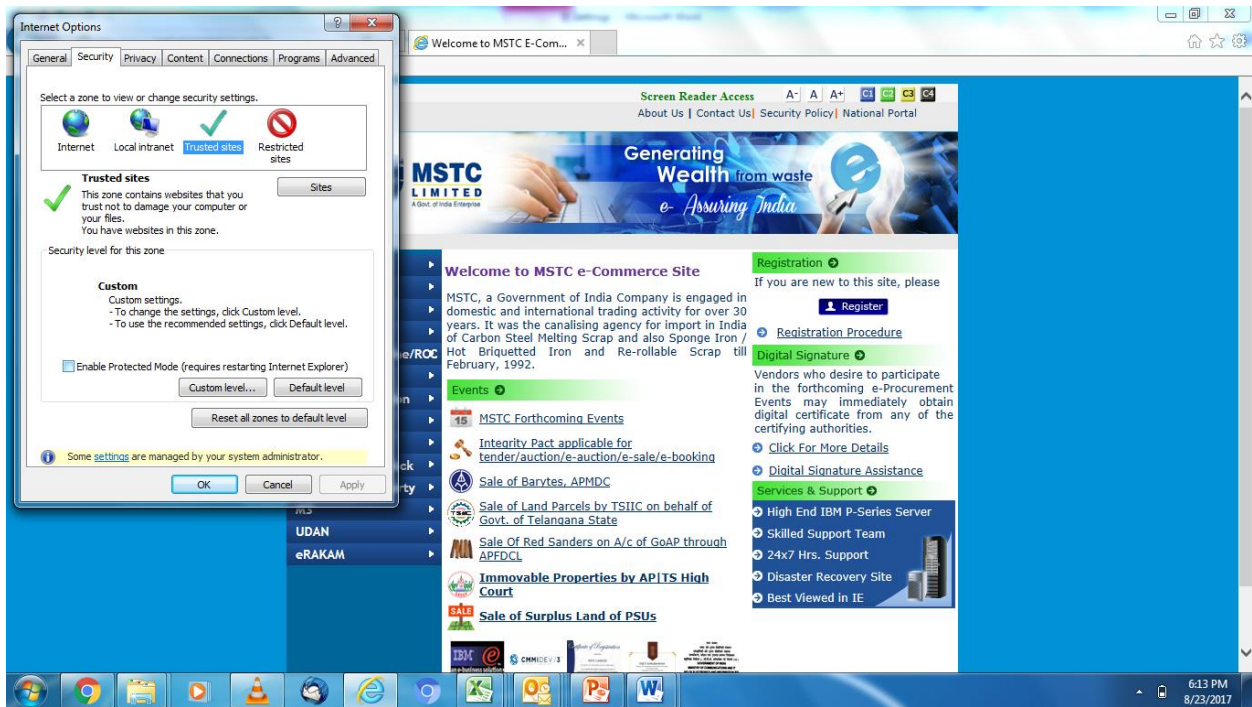
Add http://www.mstcecommerce.com in trusted sites.



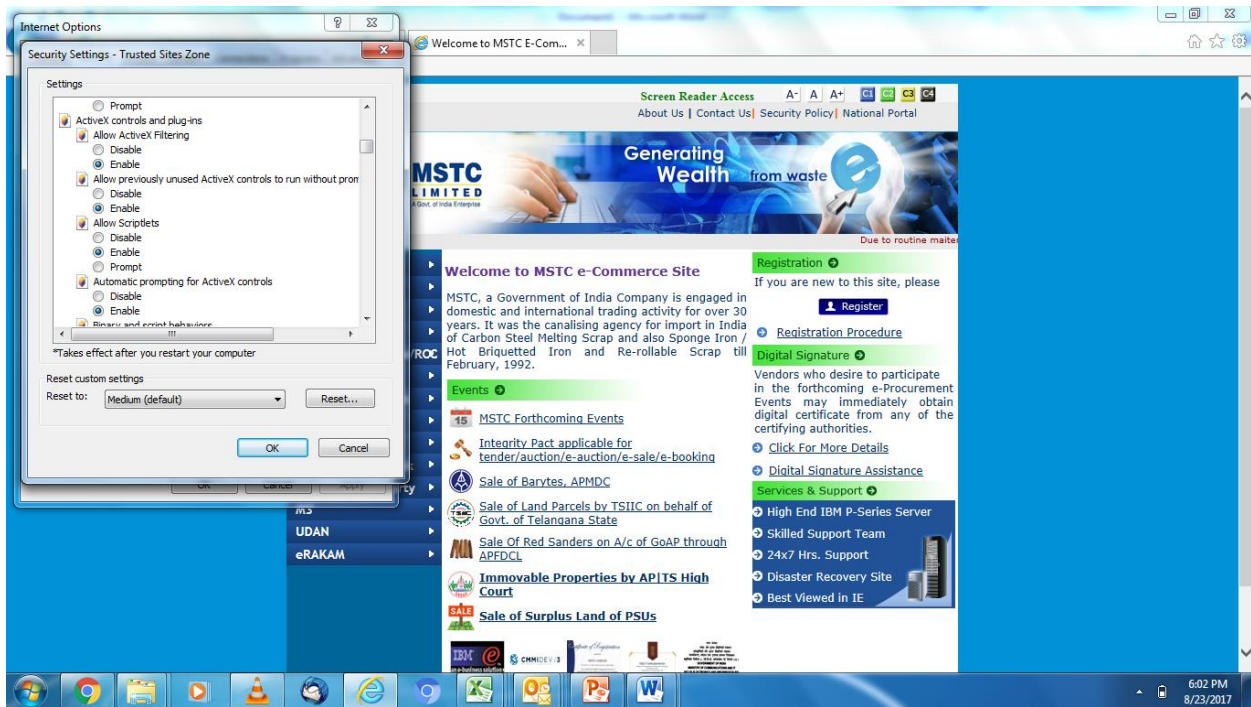
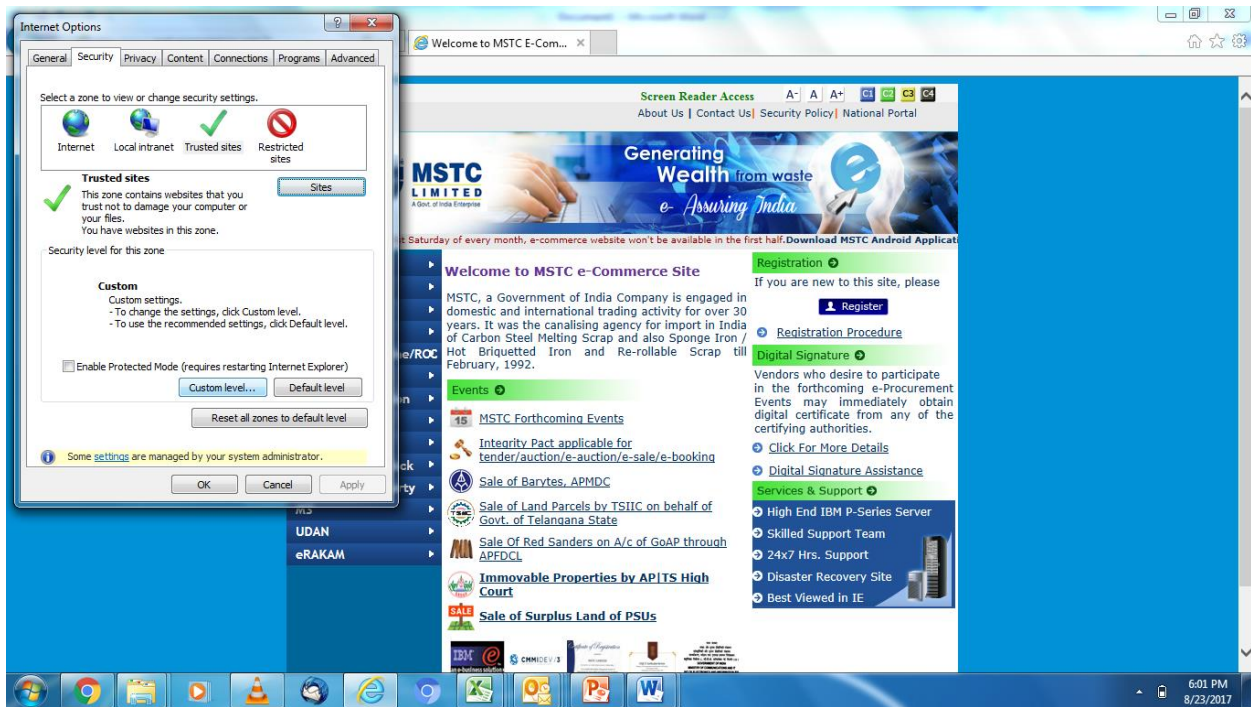


Use URL: <http://www.mstcecommerce.com> at all times.

Uncheck "enable protected mode".

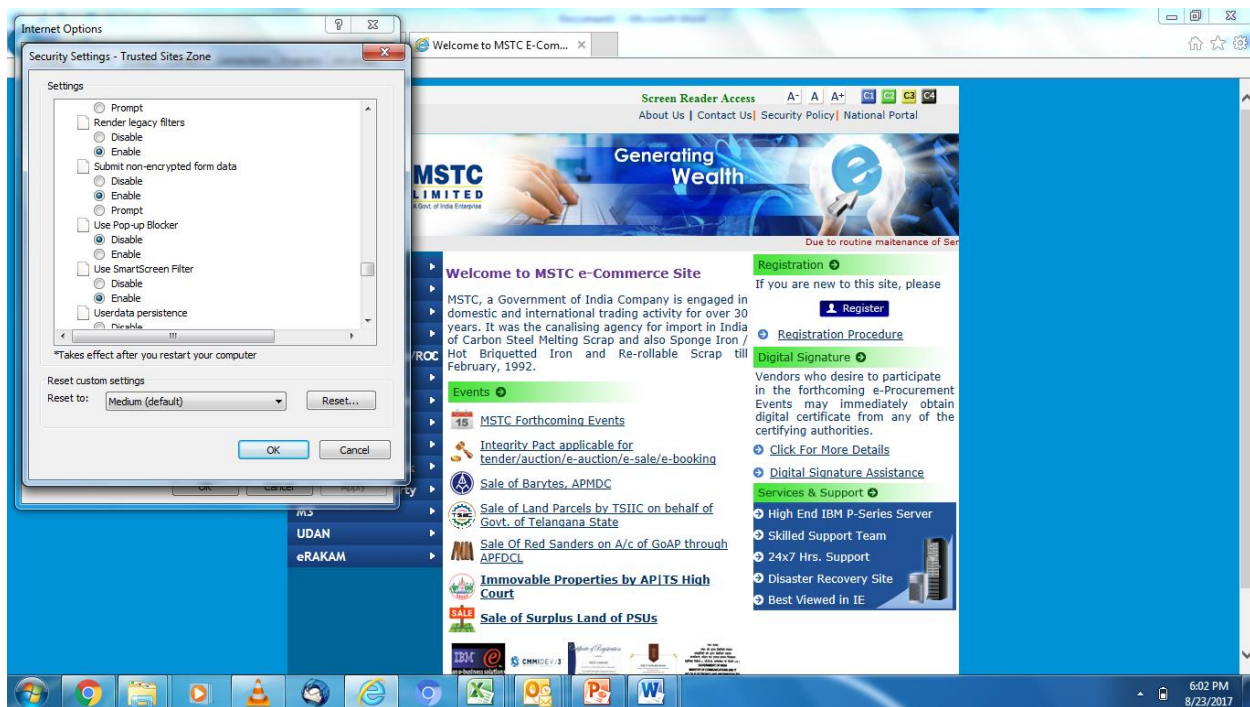


Click on Custom Level > Enable all ActiveX controls & plug ins (except “ActiveX filtering” in Windows 10)



Disable Pop up blocker





Now click on

Tools > Internet Options > Security > Internet > Custom Level

And Repeat the same settings as done in "Trusted sites" i.e.

- ➔ Uncheck "Enable Protected Mode"
- ➔ Enable all the active X controls & plug ins (except "ActiveX filtering" in Windows 10)
- ➔ Disable "pop-up blocker".

Click on OK and accept prompt.

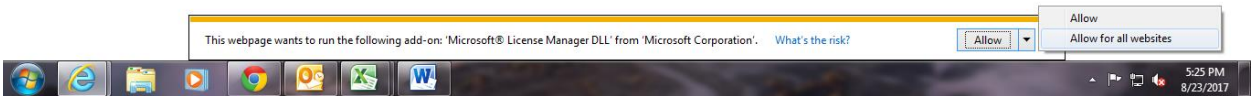
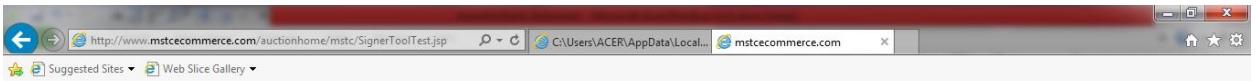
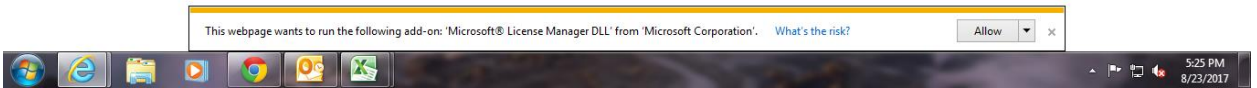
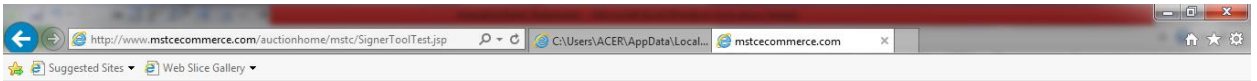
Close the browser and restart Internet Explorer.

**Note: After doing above settings, never click on Fix Setting tab, if prompted.**

**Once done, settings can be checked through:**

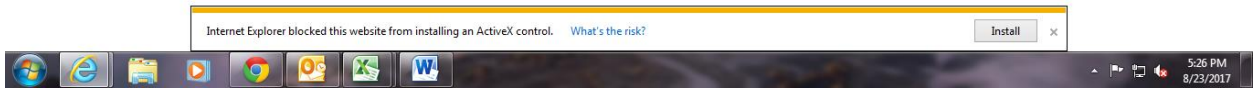
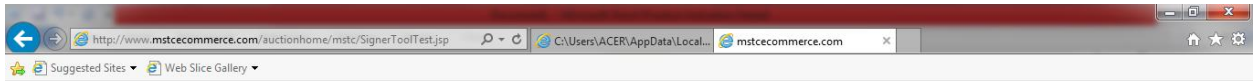
<http://www.mstcecommerce.com/auctionhome/mstc/SignerToolTest.jsp>

1. If the system asks to allow "Microsoft License Manager DLL", click on "allow to run on all websites"

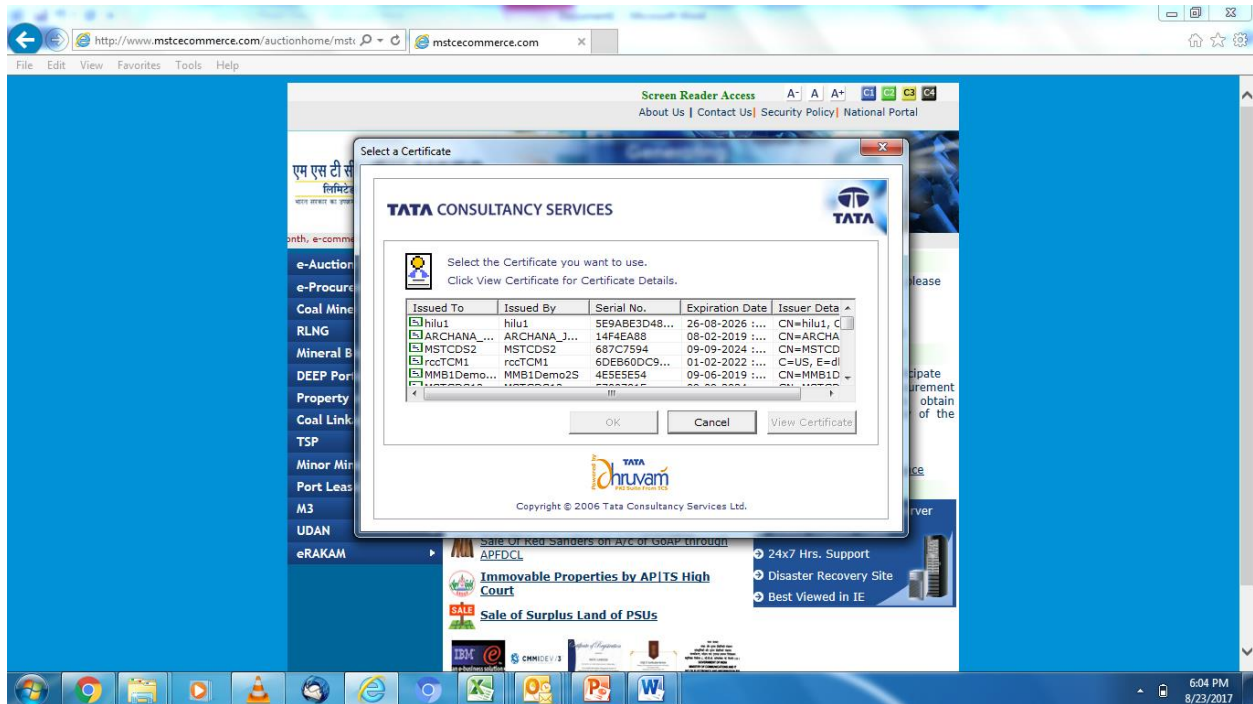


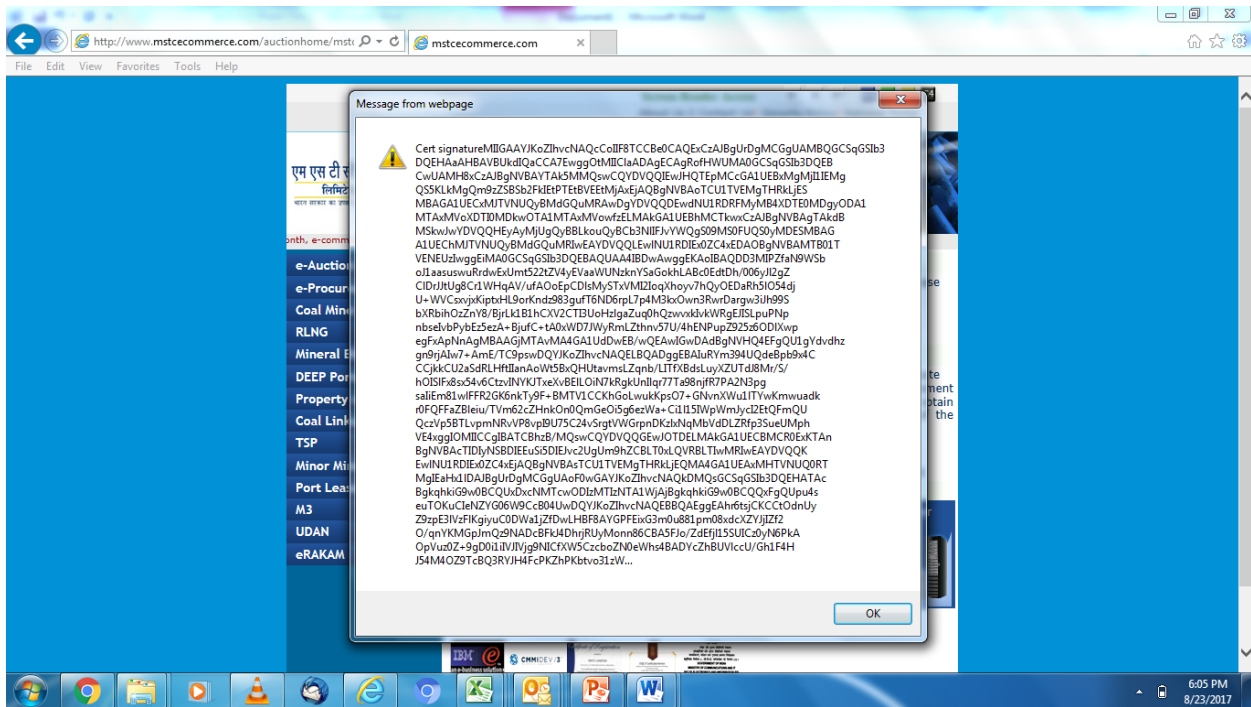
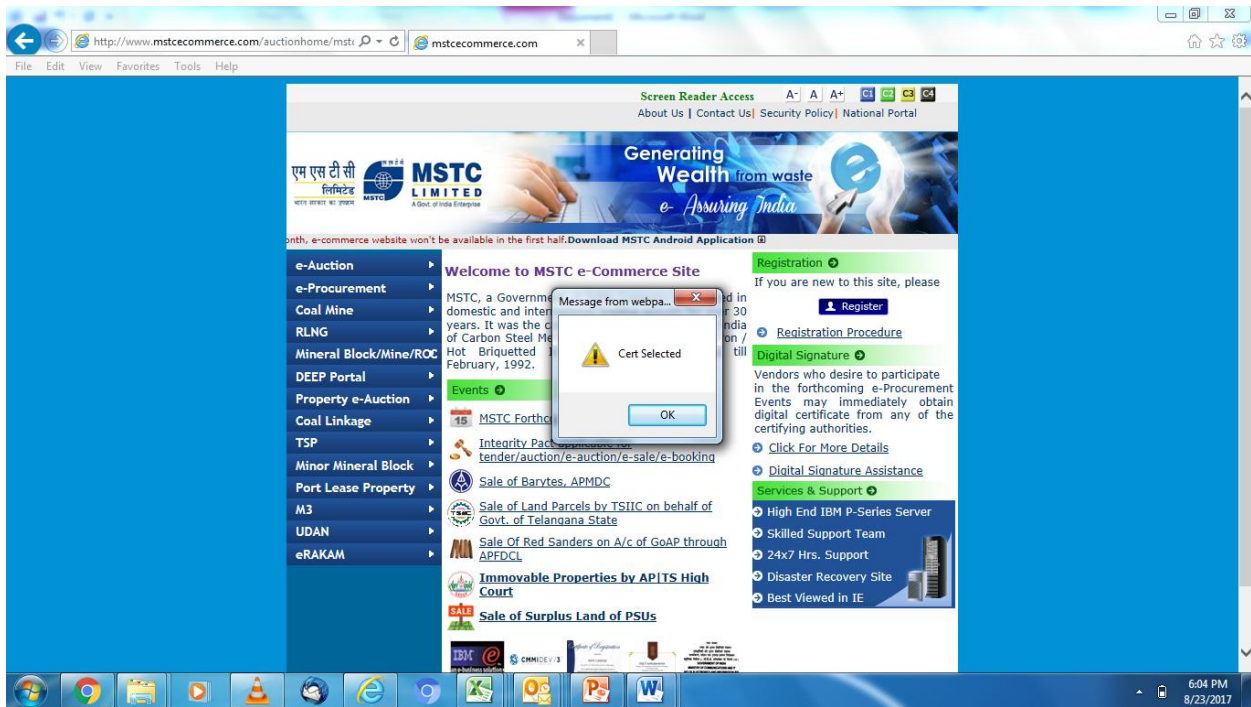
2. Further system may ask to install ActiveX control, click on install and proceed.





3. Now system shall verify your DSC and proceed to complete the process.





Click on Ok.