

## Tokisud II BLOCK SUMMARY

### PART A

Sr. No	Features	Details
<b>1.</b>	<b>Location</b>	
	Coal Block	Tokisud II
	Latitude	23° 41' 41" N - 23° 42' 49" N (Provisional)
	Longitude	85° 14' 15" E - 85° 15' 30" E (Provisional)
	Topo Sheet No.	73E/2 and E/6
	Coalfield	South Karanpura Coalfield
	Villages	Mahuatoli, Mahuatola, Ford (As per Survey of India Toposheet)
	Tehsil/Taluka	Barkagaon
	District	Ramgarh
	State	Jharkhand
<b>2.</b>	<b>Connectivity with Block</b>	
	Nearest Rail Head	Nearest railway station and airport are located at Patratu (10 km) and Ranchi (80 km), respectively.
	Road	The block is connected by all-weather road to District town Ramgarh (30 km) and state capital Ranchi (75 km).
	Airport	
<b>3.</b>	<b>Area</b>	
	Geological Block Area	2.2 sq. km. (As per shape file. Refer note below)
	Forest Area	6% (approx.)
	Non-Forest Area	94% (approx.)
	<b>Climate and Topography</b>	
	Average Annual Rainfall	The average rainfall during rainy season (July to September) is around 120cm.
<b>4.</b>	Temperature (Min. - Max.)	The South Karanpura Coalfield bears a tropical climate. During summer months (April to June) the day temperature reaches around 45°C. During winter months (November to January) the weather is comparatively pleasant with day temperature around 24°C. Night-time temperature often falls to 4°C.
	Local Surface Drainage Channels	The drainage of the block is mainly controlled by the river Damodar which encircles the eastern, northern and western part of the block. A few nalas and dug wells are also present in the block.
	Rivers	Damodar River

<b>5.</b>	<b>Exploration</b>				
	Status	Explored			
	Exploration Agency	CMPDI			
	Total Number of Boreholes with meterage	69 boreholes and 17819.45m			
	Borehole Density	30 boreholes per sq. km.			
	General Dip of Seams	The dip varies widely between 5° and 21° due south-east to south. The dip in general is around 10°			
	General Strike Direction	The regional strike of the formation in the block swings from NE-SW in the western part to E-W in the major part of the block.			
<b>6.</b>	<b>Coal Seams &amp; Reserve</b>				
	Coal Seams	Thickness Range (m)	Depth Range (m)	Geological Reserve (Mt)	Grade
	Saunda	1.00 – 3.33	14.20 – 134.85	4.664	G3 – G14
	Sayal	1.64 – 5.35	18.38 – 142.01	6.179	G6 – G14
	Up. Balkudra	4.30 – 10.11	15.52 – 171.39	18.9	G8 – G14
	Lr. Balkudra	0.33 – 4.34	10.00 – 196.33	4.851	G6 – G14
	Balkudra ‘A’	1.15 – 2.87	14.37 – 199.36	4.182	G5 – G14
	Up.Nakari	0.09 – 1.78	11.42 – 211.33		G6 – G10
	Semana Comb.	0.08 – 1.95	23.31 – 228.75	2.594	G6 - UG
	Hathidari	0.24 – 3.06	44.00 – 252.07	2.273	G5 – G14
	Bansgarha	0.63 – 6.06	9.70 – 279.50	7.766	G5 – G14
	Argada	3.23 – 15.45	11.56 – 315.56	16.033	G6 – G14
	Argada ‘A+B’	7.42 – 17.00	15.54 – 367.42	34.852	G6 – G14
	Argada ‘C+D’	1.20 – 15.45	44.71 – 402.67	25.398	G5 – G12
	<b>Total</b>			<b>127.692</b>	
<b>7.</b>	<b>Surface Constraints</b>	Part of the block is covered by PF (As per Survey of India Toposheet)			

<b>8.</b>	<b>Grade of coal</b>	G10 (Provisional) based on weighted average grade as per grade-wise data available in GR.
<b>9.</b>	<b>Decision Support System (DSS) Analysis</b>	Hydrology info: The polygon touches major river(s)- Damodar or Deonad River
<b>10.</b>	<b>Eco Sensitive Zone (ESZ)</b>	Approx. 87.22 km from Parasnath ESZ, 32.81 km from Hazaribagh ESZ, 53.93 km from Lawalong ESZ, 81.03 km from Palamau TR, and 91.92 km from Palkot ESZ.

### PART B

<b>Sr.No.</b>	<b>Features</b>	<b>Details</b>
1.	Tentative Peak Rated Mine Capacity	1.5 MTPA

Note:

1. Above summary has been prepared based on the report titled “Geological Report on Detailed Exploration for Coal in Tokisud Block-II, South Karanpura Coalfield, Jharkhand.”

**Disclaimer:**

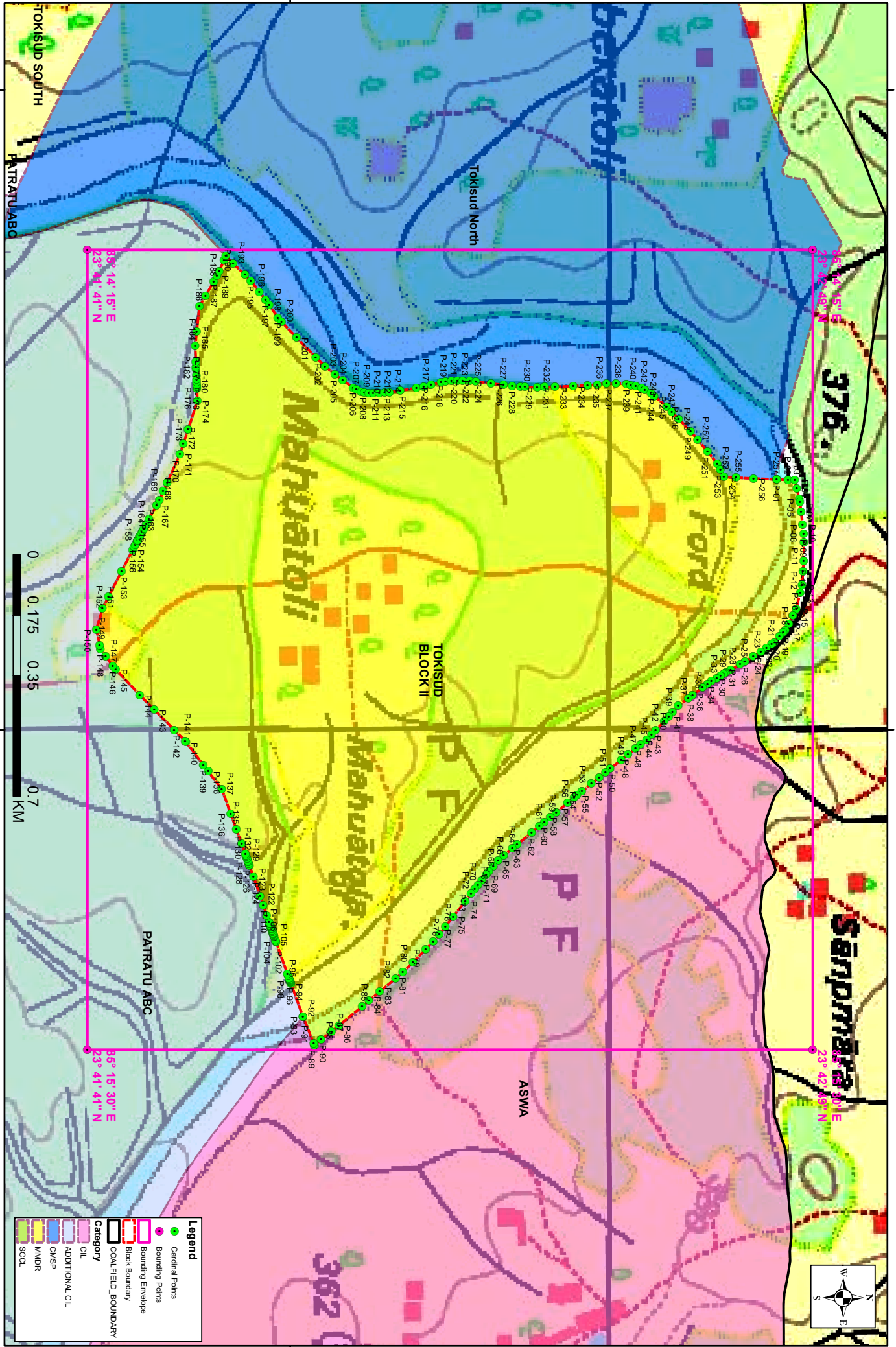
1. The analysis is done on Beta-version (Trial Version) of Decision Support System (DSS) of FSI / MOEF.
2. The Decision Rules for various parameters of this DSS System are controlled by FSI.
3. CMPDI only runs this DSS to obtain the status of any block based on these Decision Rules.
4. The database of the Decision Rules is updated by FSI from time to time.
5. CMPDI does not own any responsibility for variation in the results which are based on the Decision Rules of the FSI DSS in case of any updation of the database at FSI end.
6. ESZ analysis and tiger habitat/ corridor given here is based on the information available in public domain. Bidders are encouraged to verify this information and any other information additionally available.

85°14'0"E

85°15'0"E

### Tokisud-II Block, South Karanpura Coalfield

FOR INTERNAL/RESTRICTED USE ONLY



23°42'0"N

23°42'0"N

TOKISUD SOUTH

PATRATU ABC

376

362

Note: The map is prepared on WGS84 coordinate system.

85°14'0"E

85°15'0"E



Legend	
●	Cardinal Points
●	Bounding Points
□	Block Boundary
□	Coalfield Boundary
Category	
■	OIL
■	ADDITIONAL OIL
■	CMSF
■	MMOR
■	SCDL

**Provisional Cardinal Points for TOKISUD BLOCK II Block**

POINT NO	Longitude (WGS84)	Latitude (WGS84)
P-1	85° 14' 36.531" E	23° 42' 45.626" N
P-2	85° 14' 36.580" E	23° 42' 46.682" N
P-3	85° 14' 36.598" E	23° 42' 47.312" N
P-4	85° 14' 37.369" E	23° 42' 47.502" N
P-5	85° 14' 38.331" E	23° 42' 47.738" N
P-6	85° 14' 38.668" E	23° 42' 47.799" N
P-7	85° 14' 39.579" E	23° 42' 47.909" N
P-8	85° 14' 40.751" E	23° 42' 48.049" N
P-9	85° 14' 41.615" E	23° 42' 48.153" N
P-10	85° 14' 42.416" E	23° 42' 48.172" N
P-11	85° 14' 44.179" E	23° 42' 48.153" N
P-12	85° 14' 45.146" E	23° 42' 48.086" N
P-13	85° 14' 46.423" E	23° 42' 47.998" N
P-14	85° 14' 47.134" E	23° 42' 47.826" N
P-15	85° 14' 48.672" E	23° 42' 47.456" N
P-16	85° 14' 49.296" E	23° 42' 47.134" N
P-17	85° 14' 50.044" E	23° 42' 46.747" N
P-18	85° 14' 50.676" E	23° 42' 46.420" N
P-19	85° 14' 50.883" E	23° 42' 46.230" N
P-20	85° 14' 51.255" E	23° 42' 45.887" N
P-21	85° 14' 51.811" E	23° 42' 45.375" N
P-22	85° 14' 51.971" E	23° 42' 45.147" N
P-23	85° 14' 52.314" E	23° 42' 44.661" N
P-24	85° 14' 52.679" E	23° 42' 44.142" N
P-25	85° 14' 53.148" E	23° 42' 43.422" N
P-26	85° 14' 53.599" E	23° 42' 42.654" N
P-27	85° 14' 53.877" E	23° 42' 42.182" N
P-28	85° 14' 54.396" E	23° 42' 41.299" N
P-29	85° 14' 54.657" E	23° 42' 40.853" N
P-30	85° 14' 54.704" E	23° 42' 40.774" N
P-31	85° 14' 54.774" E	23° 42' 40.656" N
P-32	85° 14' 54.954" E	23° 42' 40.349" N
P-33	85° 14' 55.161" E	23° 42' 39.997" N
P-34	85° 14' 55.448" E	23° 42' 39.508" N
P-35	85° 14' 55.727" E	23° 42' 39.130" N
P-36	85° 14' 56.062" E	23° 42' 38.677" N
P-37	85° 14' 56.762" E	23° 42' 37.728" N
P-38	85° 14' 57.054" E	23° 42' 37.331" N
P-39	85° 14' 57.759" E	23° 42' 36.376" N
P-40	85° 14' 58.360" E	23° 42' 35.852" N
P-41	85° 14' 58.746" E	23° 42' 35.495" N
P-42	85° 14' 59.207" E	23° 42' 35.067" N
P-43	85° 15' 0.062" E	23° 42' 34.269" N
P-44	85° 15' 0.465" E	23° 42' 33.891" N
P-45	85° 15' 0.953" E	23° 42' 33.435" N
P-46	85° 15' 1.401" E	23° 42' 32.864" N
P-47	85° 15' 1.774" E	23° 42' 32.390" N

**Provisional Cardinal Points for TOKISUD BLOCK II Block**

POINT NO	Longitude (WGS84)	Latitude (WGS84)
P-48	85° 15' 2.324" E	23° 42' 31.688" N
P-49	85° 15' 2.828" E	23° 42' 31.046" N
P-50	85° 15' 3.652" E	23° 42' 29.999" N
P-51	85° 15' 3.987" E	23° 42' 29.576" N
P-52	85° 15' 4.447" E	23° 42' 28.995" N
P-53	85° 15' 5.038" E	23° 42' 28.249" N
P-54	85° 15' 5.775" E	23° 42' 27.351" N
P-55	85° 15' 6.141" E	23° 42' 26.906" N
P-56	85° 15' 6.377" E	23° 42' 26.619" N
P-57	85° 15' 6.869" E	23° 42' 26.020" N
P-58	85° 15' 7.741" E	23° 42' 24.959" N
P-59	85° 15' 8.212" E	23° 42' 24.386" N
P-60	85° 15' 8.663" E	23° 42' 23.837" N
P-61	85° 15' 9.054" E	23° 42' 23.361" N
P-62	85° 15' 9.645" E	23° 42' 22.644" N
P-63	85° 15' 10.764" E	23° 42' 21.288" N
P-64	85° 15' 11.123" E	23° 42' 20.853" N
P-65	85° 15' 11.802" E	23° 42' 20.031" N
P-66	85° 15' 12.242" E	23° 42' 19.497" N
P-67	85° 15' 12.785" E	23° 42' 19.058" N
P-68	85° 15' 13.312" E	23° 42' 18.632" N
P-69	85° 15' 13.611" E	23° 42' 18.391" N
P-70	85° 15' 14.128" E	23° 42' 17.972" N
P-71	85° 15' 14.563" E	23° 42' 17.620" N
P-72	85° 15' 14.945" E	23° 42' 17.312" N
P-73	85° 15' 15.371" E	23° 42' 16.973" N
P-74	85° 15' 16.071" E	23° 42' 16.422" N
P-75	85° 15' 17.522" E	23° 42' 15.286" N
P-76	85° 15' 18.444" E	23° 42' 14.563" N
P-77	85° 15' 19.187" E	23° 42' 13.981" N
P-78	85° 15' 19.841" E	23° 42' 13.438" N
P-79	85° 15' 20.580" E	23° 42' 12.714" N
P-80	85° 15' 21.802" E	23° 42' 11.516" N
P-81	85° 15' 22.731" E	23° 42' 10.577" N
P-82	85° 15' 23.306" E	23° 42' 9.894" N
P-83	85° 15' 24.566" E	23° 42' 8.396" N
P-84	85° 15' 25.413" E	23° 42' 7.390" N
P-85	85° 15' 25.946" E	23° 42' 6.756" N
P-86	85° 15' 27.724" E	23° 42' 4.572" N
P-87	85° 15' 28.274" E	23° 42' 3.884" N
P-88	85° 15' 29.050" E	23° 42' 2.914" N
P-89	85° 15' 29.552" E	23° 42' 2.286" N
P-90	85° 15' 29.561" E	23° 42' 2.275" N
P-91	85° 15' 29.421" E	23° 42' 2.217" N
P-92	85° 15' 26.886" E	23° 42' 1.217" N
P-93	85° 15' 26.894" E	23° 42' 1.206" N
P-94	85° 15' 23.787" E	23° 42' 0.072" N

**Provisional Cardinal Points for TOKISUD BLOCK II Block**

POINT NO	Longitude (WGS84)	Latitude (WGS84)
P-95	85° 15' 23.700" E	23° 42' 0.041" N
P-96	85° 15' 23.632" E	23° 42' 0.017" N
P-97	85° 15' 23.581" E	23° 42' 0.000" N
P-98	85° 15' 23.528" E	23° 41' 59.979" N
P-99	85° 15' 23.434" E	23° 41' 59.945" N
P-100	85° 15' 23.320" E	23° 41' 59.905" N
P-101	85° 15' 23.110" E	23° 41' 59.829" N
P-102	85° 15' 22.883" E	23° 41' 59.747" N
P-103	85° 15' 19.899" E	23° 41' 58.686" N
P-104	85° 15' 19.837" E	23° 41' 58.664" N
P-105	85° 15' 19.756" E	23° 41' 58.636" N
P-106	85° 15' 19.390" E	23° 41' 58.508" N
P-107	85° 15' 19.320" E	23° 41' 58.483" N
P-108	85° 15' 19.202" E	23° 41' 58.441" N
P-109	85° 15' 19.146" E	23° 41' 58.422" N
P-110	85° 15' 19.069" E	23° 41' 58.395" N
P-111	85° 15' 18.947" E	23° 41' 58.352" N
P-112	85° 15' 18.847" E	23° 41' 58.317" N
P-113	85° 15' 18.722" E	23° 41' 58.273" N
P-114	85° 15' 18.637" E	23° 41' 58.243" N
P-115	85° 15' 18.527" E	23° 41' 58.204" N
P-116	85° 15' 18.462" E	23° 41' 58.181" N
P-117	85° 15' 18.328" E	23° 41' 58.134" N
P-118	85° 15' 18.157" E	23° 41' 58.074" N
P-119	85° 15' 18.135" E	23° 41' 58.066" N
P-120	85° 15' 18.017" E	23° 41' 58.025" N
P-121	85° 15' 17.394" E	23° 41' 57.809" N
P-122	85° 15' 16.465" E	23° 41' 57.487" N
P-123	85° 15' 15.605" E	23° 41' 57.189" N
P-124	85° 15' 13.779" E	23° 41' 56.561" N
P-125	85° 15' 12.726" E	23° 41' 56.191" N
P-126	85° 15' 12.668" E	23° 41' 56.170" N
P-127	85° 15' 12.554" E	23° 41' 56.129" N
P-128	85° 15' 12.399" E	23° 41' 56.074" N
P-129	85° 15' 12.302" E	23° 41' 56.039" N
P-130	85° 15' 12.107" E	23° 41' 55.969" N
P-131	85° 15' 11.886" E	23° 41' 55.890" N
P-132	85° 15' 11.766" E	23° 41' 55.847" N
P-133	85° 15' 11.671" E	23° 41' 55.812" N
P-134	85° 15' 10.704" E	23° 41' 55.461" N
P-135	85° 15' 9.327" E	23° 41' 54.960" N
P-136	85° 15' 7.859" E	23° 41' 54.427" N
P-137	85° 15' 5.571" E	23° 41' 53.596" N
P-138	85° 15' 3.904" E	23° 41' 52.327" N
P-139	85° 15' 3.296" E	23° 41' 51.864" N
P-140	85° 15' 1.164" E	23° 41' 50.241" N
P-141	85° 15' 1.063" E	23° 41' 50.164" N

**Provisional Cardinal Points for TOKISUD BLOCK II Block**

POINT NO	Longitude (WGS84)	Latitude (WGS84)
P-142	85° 15' 0.021" E	23° 41' 49.135" N
P-143	85° 14' 58.130" E	23° 41' 47.268" N
P-144	85° 14' 56.754" E	23° 41' 45.910" N
P-145	85° 14' 54.327" E	23° 41' 43.649" N
P-146	85° 14' 54.044" E	23° 41' 43.385" N
P-147	85° 14' 53.090" E	23° 41' 42.692" N
P-148	85° 14' 52.427" E	23° 41' 42.219" N
P-149	85° 14' 52.059" E	23° 41' 42.145" N
P-150	85° 14' 50.596" E	23° 41' 41.850" N
P-151	85° 14' 48.641" E	23° 41' 42.403" N
P-152	85° 14' 47.539" E	23° 41' 42.969" N
P-153	85° 14' 45.135" E	23° 41' 44.205" N
P-154	85° 14' 43.141" E	23° 41' 45.239" N
P-155	85° 14' 42.870" E	23° 41' 45.381" N
P-156	85° 14' 42.664" E	23° 41' 45.490" N
P-157	85° 14' 42.320" E	23° 41' 45.671" N
P-158	85° 14' 42.302" E	23° 41' 45.680" N
P-159	85° 14' 42.213" E	23° 41' 45.727" N
P-160	85° 14' 41.960" E	23° 41' 45.860" N
P-161	85° 14' 41.789" E	23° 41' 45.950" N
P-162	85° 14' 41.573" E	23° 41' 46.066" N
P-163	85° 14' 41.382" E	23° 41' 46.169" N
P-164	85° 14' 41.120" E	23° 41' 46.310" N
P-165	85° 14' 40.737" E	23° 41' 46.517" N
P-166	85° 14' 40.253" E	23° 41' 46.777" N
P-167	85° 14' 38.932" E	23° 41' 47.491" N
P-168	85° 14' 38.462" E	23° 41' 47.745" N
P-169	85° 14' 37.645" E	23° 41' 48.111" N
P-170	85° 14' 36.826" E	23° 41' 48.478" N
P-171	85° 14' 34.142" E	23° 41' 49.679" N
P-172	85° 14' 33.182" E	23° 41' 49.992" N
P-173	85° 14' 31.851" E	23° 41' 50.426" N
P-174	85° 14' 29.142" E	23° 41' 51.308" N
P-175	85° 14' 27.988" E	23° 41' 51.258" N
P-176	85° 14' 27.839" E	23° 41' 51.251" N
P-177	85° 14' 27.648" E	23° 41' 51.244" N
P-178	85° 14' 27.374" E	23° 41' 51.233" N
P-179	85° 14' 27.151" E	23° 41' 51.224" N
P-180	85° 14' 26.812" E	23° 41' 51.211" N
P-181	85° 14' 26.214" E	23° 41' 51.188" N
P-182	85° 14' 26.014" E	23° 41' 51.180" N
P-183	85° 14' 25.506" E	23° 41' 51.160" N
P-184	85° 14' 24.015" E	23° 41' 51.103" N
P-185	85° 14' 22.683" E	23° 41' 51.246" N
P-186	85° 14' 20.323" E	23° 41' 51.499" N
P-187	85° 14' 19.328" E	23° 41' 52.067" N
P-188	85° 14' 17.989" E	23° 41' 52.832" N



**Provisional Cardinal Points for TOKISUD BLOCK II Block**

POINT NO	Longitude (WGS84)	Latitude (WGS84)
P-189	85° 14' 17.434" E	23° 41' 53.136" N
P-190	85° 14' 17.019" E	23° 41' 53.361" N
P-191	85° 14' 15.970" E	23° 41' 53.809" N
P-192	85° 14' 15.568" E	23° 41' 53.981" N
P-193	85° 14' 16.284" E	23° 41' 54.653" N
P-194	85° 14' 17.341" E	23° 41' 55.766" N
P-195	85° 14' 17.903" E	23° 41' 56.323" N
P-196	85° 14' 18.939" E	23° 41' 57.123" N
P-197	85° 14' 19.676" E	23° 41' 57.691" N
P-198	85° 14' 20.195" E	23° 41' 58.048" N
P-199	85° 14' 21.365" E	23° 41' 58.850" N
P-200	85° 14' 21.746" E	23° 41' 59.203" N
P-201	85° 14' 23.240" E	23° 42' 0.615" N
P-202	85° 14' 25.080" E	23° 42' 2.405" N
P-203	85° 14' 25.924" E	23° 42' 3.285" N
P-204	85° 14' 26.688" E	23° 42' 4.216" N
P-205	85° 14' 27.230" E	23° 42' 4.942" N
P-206	85° 14' 27.929" E	23° 42' 5.912" N
P-207	85° 14' 28.080" E	23° 42' 6.209" N
P-208	85° 14' 28.302" E	23° 42' 6.648" N
P-209	85° 14' 28.365" E	23° 42' 6.973" N
P-210	85° 14' 28.443" E	23° 42' 7.373" N
P-211	85° 14' 28.450" E	23° 42' 7.790" N
P-212	85° 14' 28.440" E	23° 42' 8.358" N
P-213	85° 14' 28.391" E	23° 42' 8.872" N
P-214	85° 14' 28.348" E	23° 42' 9.324" N
P-215	85° 14' 28.204" E	23° 42' 10.320" N
P-216	85° 14' 27.943" E	23° 42' 11.842" N
P-217	85° 14' 27.801" E	23° 42' 12.525" N
P-218	85° 14' 27.651" E	23° 42' 13.225" N
P-219	85° 14' 27.430" E	23° 42' 14.164" N
P-220	85° 14' 27.325" E	23° 42' 14.593" N
P-221	85° 14' 27.295" E	23° 42' 15.118" N
P-222	85° 14' 27.264" E	23° 42' 15.671" N
P-223	85° 14' 27.269" E	23° 42' 16.175" N
P-224	85° 14' 27.309" E	23° 42' 16.843" N
P-225	85° 14' 27.358" E	23° 42' 17.414" N
P-226	85° 14' 27.528" E	23° 42' 18.838" N
P-227	85° 14' 27.666" E	23° 42' 20.003" N
P-228	85° 14' 27.764" E	23° 42' 20.825" N
P-229	85° 14' 27.841" E	23° 42' 21.587" N
P-230	85° 14' 27.852" E	23° 42' 22.016" N
P-231	85° 14' 27.883" E	23° 42' 23.169" N
P-232	85° 14' 27.865" E	23° 42' 23.867" N
P-233	85° 14' 27.840" E	23° 42' 24.839" N
P-234	85° 14' 27.778" E	23° 42' 26.549" N
P-235	85° 14' 27.707" E	23° 42' 27.897" N

**Provisional Cardinal Points for TOKISUD BLOCK II Block**

POINT NO	Longitude (WGS84)	Latitude (WGS84)
P-236	85° 14' 27.627" E	23° 42' 28.818" N
P-237	85° 14' 27.534" E	23° 42' 29.664" N
P-238	85° 14' 27.539" E	23° 42' 30.555" N
P-239	85° 14' 27.583" E	23° 42' 31.540" N
P-240	85° 14' 27.681" E	23° 42' 31.945" N
P-241	85° 14' 27.796" E	23° 42' 32.420" N
P-242	85° 14' 27.975" E	23° 42' 32.972" N
P-243	85° 14' 28.138" E	23° 42' 33.258" N
P-244	85° 14' 28.468" E	23° 42' 33.838" N
P-245	85° 14' 28.707" E	23° 42' 34.142" N
P-246	85° 14' 29.722" E	23° 42' 35.307" N
P-247	85° 14' 30.223" E	23° 42' 35.805" N
P-248	85° 14' 30.867" E	23° 42' 36.436" N
P-249	85° 14' 32.039" E	23° 42' 37.550" N
P-250	85° 14' 32.800" E	23° 42' 38.203" N
P-251	85° 14' 33.927" E	23° 42' 39.151" N
P-252	85° 14' 35.054" E	23° 42' 40.054" N
P-253	85° 14' 35.633" E	23° 42' 40.341" N
P-254	85° 14' 36.307" E	23° 42' 40.676" N
P-255	85° 14' 36.361" E	23° 42' 41.819" N
P-256	85° 14' 36.446" E	23° 42' 43.444" N
P-257	85° 14' 36.531" E	23° 42' 45.626" N