

## THESGORA-B/ RUDRAPURI COAL BLOCK SUMMARY

### PART A

Sr. No.	Features	Details
<b>1.</b>	<b>Location</b>	
	Coal Block	<b>THESGORA-B/ RUDRAPURI</b>
	Latitude	22° 15' 37" N to 22° 17' 1" N (Provisional)
	Longitude	78° 56' 23" E to 78° 58' 49" E (Provisional)
	Topo Sheet No.	55 J / 15
	Coalfield	Pench Kanhan
	Villages	Tuman, Tumandhana (As per SOI Toposheet).
	Tehsil/Taluka	Parasia
	District	Chhindwara
State	Madhya Pradesh	
<b>2.</b>	<b>Connectivity with Block</b>	
	Nearest Rail Head	
	Road	Thesgora Block B is approximately 30 km north-east of Parasia, the main mining town in the Pench Valley. Chhindwara town is located 27 km south-east of Parasia. State Highway-19 connects Chhindwara with Parasia which is also linked through a narrow gauge line of south-eastern railway.
	Airport	
<b>3.</b>	<b>Area</b>	
	Geological Block Area	5.25 sq.km. (As per shape file. Refer Note No. 3)
	Forest Area	52% (As per FSI Map)
	Non-Forest Area	48%
<b>4.</b>	<b>Climate and Topography</b>	
	Average Annual Rainfall	-
	Temperature (Min. — Max.)	-
	Local Surface Drainage Channels	The drainage in the block is mainly controlled by the perennial Gunor river which forms the north-eastern and eastern boundary of the block. Generally, it flows from North to South direction. A number of seasonal nalas flow in the block in different directions guided by the local topography and ultimately meet Gunor river. Among the nalas Magrahi nala located roughly in the central part of the block is prominent one and runs from near NW corner to the south within the block.
	Rivers	Gunor River, which forms the north-eastern and eastern boundary of the block.
<b>5.</b>	<b>Exploration</b>	
	Status	Explored
	Exploration Agency	MECL
	Total Number of Boreholes with meterage	83 Boreholes; 10989.85 m
	Borehole Density	Approx. 16.6 Boreholes/sq.km.

	General Dip of Seams	4°-8° (Approx.) westerly		
	General Strike Direction	N47°E-S47°W to N60°E-S60°W.		
<b>6.</b>	<b>Coal Seams &amp; Reserve</b>			
	Coal Seams	Thickness Range (m)	Depth Range (m)	Geological Resources (MT)
	IA	0.13-0.58	64.91-222.98	-
	IB	0.04-3.74	36.36-215.04	5.014
	IC	0.09-3.17	38.94-217.33	4.371
	IB+IC	2.00-6.10	81.50-295.19	4.600
	II	0.18-3.47	40.84-299.19	10.050
	III	0.05-2.67	44.42-303.20	6.074
	IV	0.12-2.76	56.00-250.75	5.672
	V	0.15-4.28	48.72-262.10	9.259
		<b>Total</b>		<b>45.040</b>
<b>7.</b>	<b>Surface Constraints</b>	NA		
<b>8.</b>	<b>Grade of the block</b>	G9 (Provisional) based on weighted average grade as per data available in GR.		
<b>9.</b>	<b>Decision Support System (DSS) Analysis</b>	Hydrology Info: Polygon touches major river/nala- Gunor N		
<b>10.</b>	<b>Eco Sensitive Zone (ESZ)</b>	The ESZ boundary of Panchamarhi Biosphere is located approx. 17 km away from N-W boundary of the block.		

## PART B

Sr. No.	Features	Details
<b>1.</b>	<b>Previous Allocation</b>	
	Name and Address of Allocatee	1. Kamal Sponge Steel & Power Ltd, A-7, Maharani Bagh, New Delhi- 110065 2. Revati Cement Pvt. Ltd, A-7, Maharani Bagh, New Delhi- 110065
<b>2.</b>	<b>Target Capacity as per Mining Plan</b>	<b>1.0 MTY</b>
<b>3.</b>	<b>Status of Clearances/Approvals</b>	
	Mining Plan/ Mine Closure Plan	<i>Approved</i>
	Forest Clearance	<i>No</i>
	Environmental Clearance	<i>No</i>
	Mining Lease	<i>No</i>
	Land Acquisition	<i>No</i>
	No. of PAFs as per Mining Plan/ Mine Closure Plan	--
<b>4.</b>	Surface Infrastructure already built, if any.	<i>Nil</i>

**Note:**

- The above data is compiled from Geological Report, Mining Plan and the data furnished by the prior allottee in Annexure-I/II, as available. For clarifications with regard to above data, please refer aforesaid source documents.
- The boundary of the block has been taken from GR after conversion to WGS84 system by feature matching. The block boundary is provisional and the cardinal points, bounding co-ordinates are approximate.

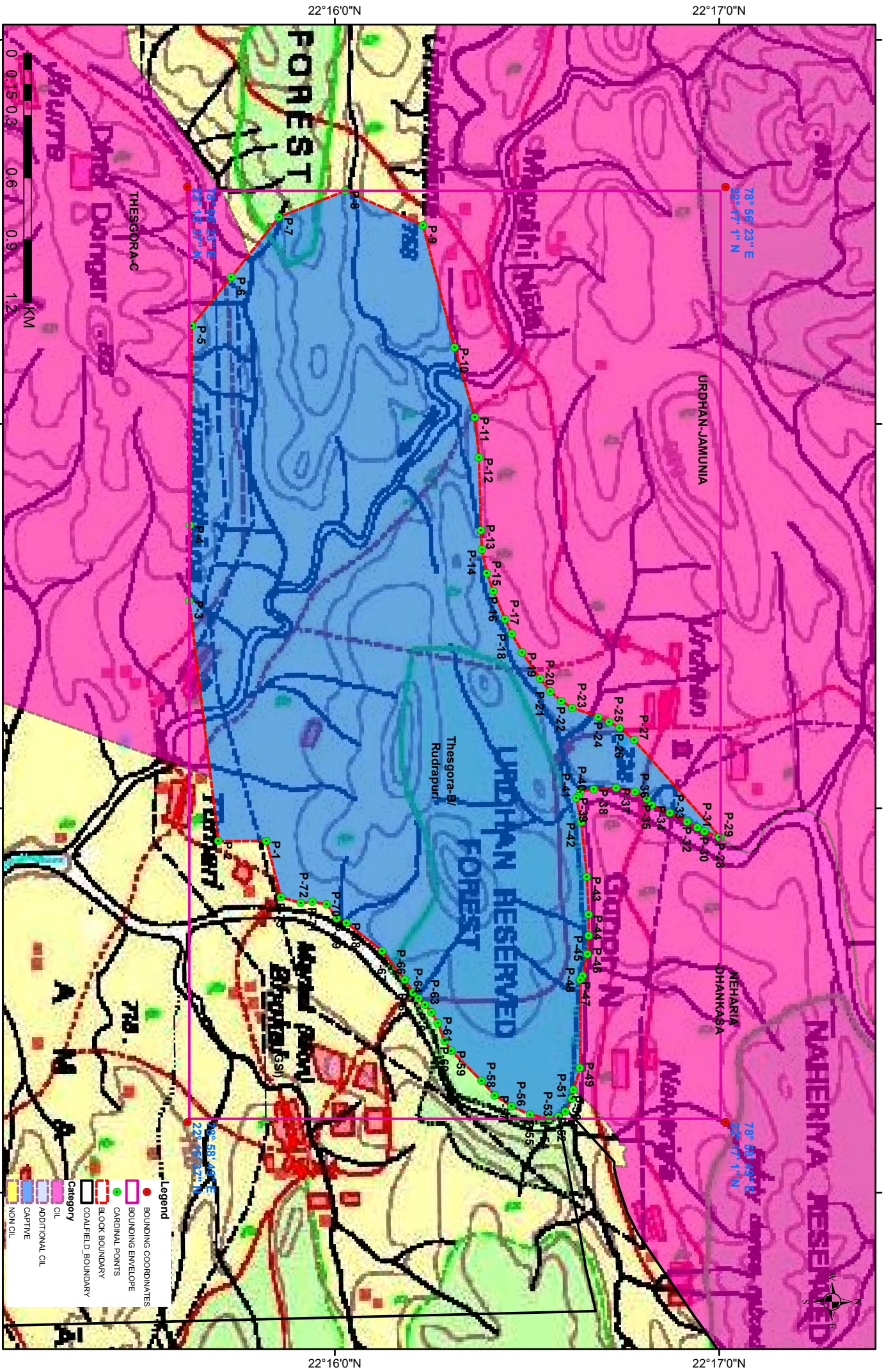
3. There is a difference in area in the shape file and GR. Area in the shape file is based on feature mapped plan of the block as given in the GR. So, the area is tentative and field DGPS survey is required to ascertain the exact area.

**Disclaimer:**

1. The analysis is done on Beta-version (Trial Version) of Decision Support System (DSS) of FSI/MOEF.
2. The Decision Rules for various parameters of this DSS System are controlled by FSI.
3. CMPDI only runs this DSS to obtain the status of any block based on these Decision Rules.
4. The database of the Decision Rules is updated by FSI from time to time.
5. CMPDI does not own any responsibility for variation in the results which are based on the decision Rules of the FSI DSS in case of any updation of the database at FSI end.
6. ESZ analysis and tiger habitat/ corridor given here is based on the information available in public domain. Bidders are encouraged to verify this information and any other information additionally available.

**Thesgora-B/ Rudrapuri Block, Pench Kanhan Tawa Valley Coalfield**

**FOR INTERNAL/RESTRICTED USE ONLY**



NOTE: Coordinates are provisional in WGS84 System

78°59'0"E

78°56'0"E 78°57'0"E 78°58'0"E 78°59'0"E

22°16'0"N 22°17'0"N

**Provisional Cardinal Points for Thesgora-B/ Rudrapuri Block**

POINT NO	Longitude (WGS84)	Latitude (WGS84)
P-1	78° 58' 5.087" E	22° 15' 49.313" N
P-2	78° 58' 5.134" E	22° 15' 41.835" N
P-3	78° 57' 27.515" E	22° 15' 37.287" N
P-4	78° 57' 15.788" E	22° 15' 37.413" N
P-5	78° 56' 44.623" E	22° 15' 37.705" N
P-6	78° 56' 37.003" E	22° 15' 43.848" N
P-7	78° 56' 27.681" E	22° 15' 51.283" N
P-8	78° 56' 23.575" E	22° 16' 1.640" N
P-9	78° 56' 28.940" E	22° 16' 13.750" N
P-10	78° 56' 48.052" E	22° 16' 18.709" N
P-11	78° 56' 58.896" E	22° 16' 21.845" N
P-12	78° 57' 5.212" E	22° 16' 22.500" N
P-13	78° 57' 16.626" E	22° 16' 22.812" N
P-14	78° 57' 19.618" E	22° 16' 22.977" N
P-15	78° 57' 23.274" E	22° 16' 23.742" N
P-16	78° 57' 26.082" E	22° 16' 24.740" N
P-17	78° 57' 30.403" E	22° 16' 26.563" N
P-18	78° 57' 32.769" E	22° 16' 27.659" N
P-19	78° 57' 35.611" E	22° 16' 29.245" N
P-20	78° 57' 39.784" E	22° 16' 32.066" N
P-21	78° 57' 41.741" E	22° 16' 33.647" N
P-22	78° 57' 43.219" E	22° 16' 35.332" N
P-23	78° 57' 44.308" E	22° 16' 37.056" N
P-24	78° 57' 45.692" E	22° 16' 41.143" N
P-25	78° 57' 46.505" E	22° 16' 42.828" N
P-26	78° 57' 47.428" E	22° 16' 44.478" N
P-27	78° 57' 49.348" E	22° 16' 46.748" N
P-28	78° 58' 4.551" E	22° 17' 0.223" N
P-29	78° 58' 4.488" E	22° 17' 0.000" N
P-30	78° 58' 3.591" E	22° 16' 57.713" N
P-31	78° 58' 3.037" E	22° 16' 56.613" N
P-32	78° 58' 2.077" E	22° 16' 54.997" N
P-33	78° 58' 0.711" E	22° 16' 52.315" N
P-34	78° 57' 59.529" E	22° 16' 49.462" N
P-35	78° 57' 58.495" E	22° 16' 48.705" N
P-36	78° 57' 57.387" E	22° 16' 46.883" N
P-37	78° 57' 56.797" E	22° 16' 43.926" N
P-38	78° 57' 56.999" E	22° 16' 40.428" N
P-39	78° 57' 57.415" E	22° 16' 38.322" N
P-40	78° 57' 58.130" E	22° 16' 38.075" N
P-41	78° 57' 58.442" E	22° 16' 37.699" N
P-42	78° 58' 2.107" E	22° 16' 38.453" N
P-43	78° 58' 10.677" E	22° 16' 39.349" N
P-44	78° 58' 16.587" E	22° 16' 39.625" N
P-45	78° 58' 19.874" E	22° 16' 39.625" N
P-46	78° 58' 22.756" E	22° 16' 39.454" N
P-47	78° 58' 26.154" E	22° 16' 38.698" N

**Provisional Cardinal Points for Thesgora-B/ Rudrapuri Block**

POINT NO	Longitude (WGS84)	Latitude (WGS84)
P-48	78° 58' 26.782" E	22° 16' 38.354" N
P-49	78° 58' 40.561" E	22° 16' 38.287" N
P-50	78° 58' 43.923" E	22° 16' 37.256" N
P-51	78° 58' 45.314" E	22° 16' 37.018" N
P-52	78° 58' 47.364" E	22° 16' 35.987" N
P-53	78° 58' 48.140" E	22° 16' 34.904" N
P-54	78° 58' 48.472" E	22° 16' 33.460" N
P-55	78° 58' 47.806" E	22° 16' 30.484" N
P-56	78° 58' 46.504" E	22° 16' 27.596" N
P-57	78° 58' 44.787" E	22° 16' 24.966" N
P-58	78° 58' 42.582" E	22° 16' 22.903" N
P-59	78° 58' 37.845" E	22° 16' 18.184" N
P-60	78° 58' 36.349" E	22° 16' 17.178" N
P-61	78° 58' 33.552" E	22° 16' 16.095" N
P-62	78° 58' 31.889" E	22° 16' 15.089" N
P-63	78° 58' 30.671" E	22° 16' 14.109" N
P-64	78° 58' 29.701" E	22° 16' 13.078" N
P-65	78° 58' 28.777" E	22° 16' 12.239" N
P-66	78° 58' 26.820" E	22° 16' 10.963" N
P-67	78° 58' 22.259" E	22° 16' 7.408" N
P-68	78° 58' 17.874" E	22° 16' 1.821" N
P-69	78° 58' 17.181" E	22° 16' 0.316" N
P-70	78° 58' 14.966" E	22° 15' 58.726" N
P-71	78° 58' 14.624" E	22° 15' 56.524" N
P-72	78° 58' 14.782" E	22° 15' 54.686" N
P-73	78° 58' 13.859" E	22° 15' 51.592" N