

**SATTUPALLI BLOCK-III SUMMARY  
PART A**

Sr. No.	Features	Details
<b>1.</b>	<b>Location</b>	
	Coal Block	<b>SATTUPALLI BLOCK-III</b>
	Latitude	17° 10' 52" N-17° 12' 14" N (Provisional)
	Longitude	80° 48' 35" E-80° 49' 43" E (Provisional)
	Topo Sheet No.	E-44O16( 65C / 16)
	Coalfield	GODAVARI VALLEY COAL FIELD
	Villages	Parts of Lankapalli and Kottur villages.
	Tehsil/Taluka	SATTUPALLI
	District	KHAMMAM
	State	TELANGANA
<b>2.</b>	<b>Connectivity with Block</b>	
	Nearest Rail Head	Bhadrachalam Road Railway Station (Kothagudem) is 55KM away from the Block
	Road	Sattupalli block-III is well connected to Kothagudem (65 km.) and the district head quarters-Khammam(72 km.) by all weather roads
	Airport	Hyderabad and Gannavaram
<b>3.</b>	<b>Area</b>	
	Geological Block Area	2.44 Sq.Km
	Forest Area	Out of 243.57 Ha of Block area 28.76 Ha is Covered by Lankapally reserve forest.
	Non-Forest Area	214.81 Ha
<b>4.</b>	<b>Climate and Topography</b>	
	Average Annual Rainfall	The mean annual rainfall is 1121.61 mm.
	Temperature (Min. — Max.)	28° - 45°C
	Local Surface Drainage Channels	The drainage is scantily developed
	Rivers	No
<b>5.</b>	<b>Exploration</b>	
	Status	Detailed exploration is completed in the year 2002
	Exploration Agency	SCCL

	Total Number of Boreholes with meterage	Boreholes & m 34 BH /9293.50m			
	Borehole Density	Approx. boreholes per sq km : 13.93			
	General Dip of Seams	South to South SE			
	General Strike Direction	East-West to ENE-WSW			
	Faults	The block is dissected by 15 faults with throw varying from 10 m. to 300+m Boundary fault.			
<b>6.</b>	<b>Coal Seams &amp; Reserve</b>				
	Coal Seams	Thickness Range (m)	Depth Range (m)	Resources (mt)	Grade
	D3	0.16 -3.40	45.20 – 131.31	1.2138	F
	D1	1.15 – 4.00	45.40 – 109.84	2.0124	G
	C7	0.58 – 4.35	22.10 – 175.92	6.1473	F
	C6	0.60 – 7.46	28.48 – 183.65	6.5902	G
	C1	1.00 – 3.95	18.70 – 200.05	6.0620	F
	B2	0.84 – 3.40	105.59 – 317.52	7.1811	F
	B1	0.50 – 6.11	113.10 – 321.68	13.3478	F
	INDEX-1	0.18 – 2.10	134.00 – 347.00	3.6169	E
	A	1.30 – 12.30	141.55 – 356.40	23.4808	E/F
	<b>Total</b>			<b>69.6523</b>	
<b>7.</b>	<b>Surface Constraints</b>	Sattupalli –Vemsur PWD Road,,Sattupalli-Rejerla Road NTR colony, Mango gardens,Lankapalli Reserved forest,Irrigations tanks.			
<b>8.</b>	<b>Grade of coal</b>	G-11 (Provisional) based on weighted average grade as per the Geological report.			
<b>9.</b>	<b>Decision Support System (DSS) Analysis</b>				
<b>10.</b>	<b>Eco Sensitive Zone (ESZ)</b>	NIL			

**PART B**

Sr. No.	Features	Details
1	PRC as per Mining Plan	4 Mty

**Note:**

1. The summary has been compiled from “**GEOLOGICAL REPORT ON SATTUPALLI BLOCK – III**” SATTUPALLI- CHINTHALPUDI COAL BELT OF GVCF, KHAMMAM DIST. TELANGANA.
2. The block boundary is provisional and the cardinal points, bounding co-ordinates are approximate. Field DGPS survey is required to ascertain the exact area.
3. The above information has been provided from M/s SCCL

**Disclaimer:**

1. The analysis is done on Beta-version (Trial Version) of Decision Support System (DSS) of FSI / MOEF.
2. The Decision Rules for various parameters of this DSS System are controlled by FSI.
3. CMPDI only runs this DSS to obtain the status of any block based on these Decision Rules.
4. The database of the Decision Rules is updated by FSI from time to time.
5. CMPDI does not own any responsibility for variation in the results which are based on the Decision Rules of the FSI DSS in case of any updation of the database at FSI end.
6. ESZ analysis and tiger habitat/ corridor given here is based on the information available in public domain. Bidders are encouraged to verify this information and any other information additionally available.

# SATTUPALLI BLOCK-III

80°47'0"E

80°48'0"E

80°49'0"E

80°50'0"E

17°14'0"N

17°13'0"N

17°12'0"N

17°11'0"N

17°10'0"N

17°9'0"N

17°14'0"N

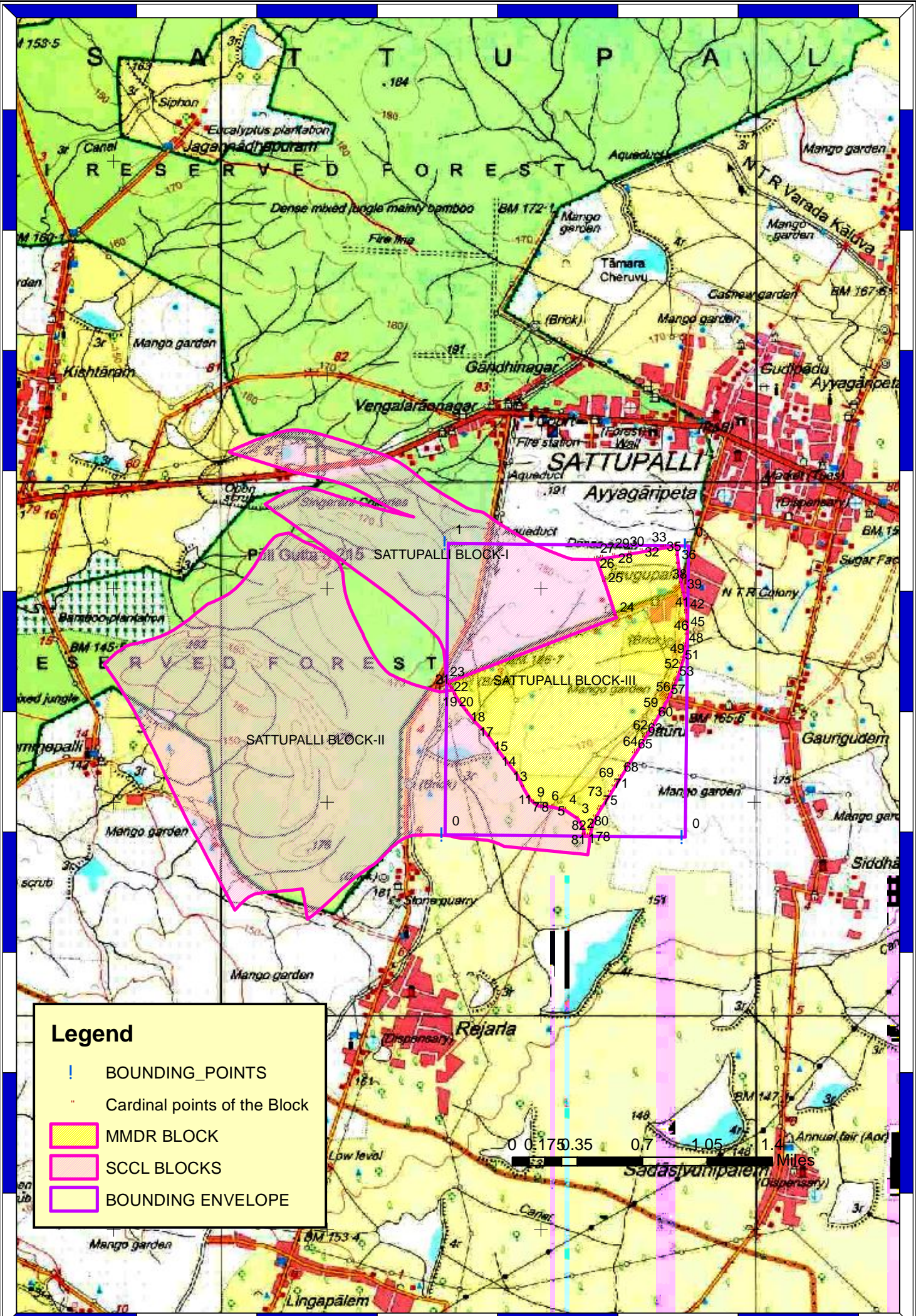
17°13'0"N

17°12'0"N


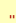



17°11'0"N

17°10'0"N

17°9'0"N



**Legend**

-  BOUNDING\_POINTS
-  Cardinal points of the Block
-  MMDR BLOCK
-  SCCL BLOCKS
-  BOUNDING ENVELOPE



**Provisional Cardinal Points for Sattupalli Block-III**

<b>S.NO</b>	<b>LATITUDE</b>	<b>LONGITUDE</b>
1	17°10'52.44"N	80°49'16.023"E
2	17°10'56.328994"N	80°49'17.081069"E
3	17°11'1.370629"N	80°49'19.861736"E
4	17°11'14.512255"N	80°49'28.079556"E
5	17°11'27.980631"N	80°49'36.166099"E
6	17°11'37.181567"N	80°49'40.607196"E
7	17°11'46.254063"N	80°49'42.882693"E
8	17°11'52.172624"N	80°49'43.32431"E
9	17°12'0.249115"N	80°49'42.294969"E
10	17°12'8.714"N	80°49'40.608"E
11	17°12'14.121"N	80°49'40.103"E
12	17°12'13.381"N	80°49'36.34"E
13	17°12'10.991"N	80°49'22.83"E
14	17°12'10.082119"N	80°49'17.261321"E
15	17°12'9.068"N	80°49'17.691"E
16	17°12'7.96"N	80°49'18.157"E
17	17°12'3.48"N	80°49'20.051"E
18	17°11'57.529"N	80°49'21.758"E
19	17°11'53.688"N	80°49'22.86"E
20	17°11'51.167"N	80°49'15.582"E
21	17°11'48.183"N	80°49'7.516"E
22	17°11'43.181"N	80°48'54.247"E
23	17°11'35.537"N	80°48'35.681"E
24	17°11'34.421"N	80°48'36.804"E
25	17°11'33.4"N	80°48'37.431"E
26	17°11'31.655"N	80°48'38.236"E
27	17°11'29.533"N	80°48'39.711"E
28	17°11'27.116"N	80°48'41.555"E
29	17°11'24.232"N	80°48'43.923"E
30	17°11'21.728"N	80°48'46.351"E
31	17°11'19.837"N	80°48'47.939"E
32	17°11'16.426"N	80°48'50.277"E
33	17°11'12.272"N	80°48'53.473"E
34	17°11'9.571"N	80°48'55.621"E
35	17°11'5.82"N	80°48'57.432"E
36	17°11'2.742"N	80°48'59.205"E
37	17°11'1.824"N	80°49'0.218"E
38	17°11'0.965"N	80°49'1.483"E
39	17°11'0.833"N	80°49'2.89"E
40	17°11'0.745"N	80°49'4.315"E
41	17°11'0.47"N	80°49'5.966"E
42	17°10'59.625"N	80°49'9.258"E
43	17°10'57.253"N	80°49'12.808"E
44	17°10'54.587"N	80°49'14.205"E
45	17°10'52.537"N	80°49'14.575"E

**Provisional Cardinal Points for Sattupalli Block-III**

<b>Bounding envelope Points</b>		
1	17°12'14.06"N	80°48'35.64"E
2	17°12'14.12"N	80°49'43.30"E
3	17°10'52.046"N	80°49'43.37"E
4	17°10'52.40"N	80°48'35.72"E

Note: . DGPS survey is required to ascertain the exact location of the points.