

SARAI EAST COAL BLOCK SUMMARY

PART A

Sr. No	Features	Details
1.	Location	
	Coal Block	Sarai East
	Latitude	24° 0' 54" N - 24° 3' 1" N (Provisional)
	Longitude	82° 10' 47" E - 82° 15' 1" E (Provisional)
	Topo Sheet No.	63 L/4 (G44W4 & F44E1)
	Coalfield	Singrauli
	Villages	Sarai, Koni, Samud
	Tehsil/Taluka	Sarai
	District	Singrauli
	State	Madhya Pradesh
2.	Connectivity with Block	
	Nearest Rail Head	The nearest railway station saraigram about 1 km. from the block.
	Road	The accessibility to the area is through NH75 Rewa-Ranchi National highway via Parsauna – Rajmelan traverses and runs almost along the boundary of Moher Sub- Basin & Main Basin. The block is located about 70 km west of Singrauli.
	Airport	-
3.	Area	
	Geological Block Area	18.89 sq.km. (As per shape file; Refer Note No. 3)
	Forest Area	Approx. 28 % (As per FSI plan)
	Non-Forest Area	Approx. 72 % (As per FSI plan)
4.	Climate and Topography	
	Average Annual Rainfall	104.66 cm
	Temperature (Min. — Max.)	25°C to 45°C
	Local Surface Drainage Channels	Sukhar Nala and Chunaiya Nala drains the entire surroundings of the block. Sukhar nala flows from south to north then joins Dhamar Nala near Gannai village north of the block. Dhamar nala flow towards east direction and joins Mahan river near Tingudi village which then flow towards north direction and meet master drainage Gopad river near Karthua Village. Chaunaiya Nala flows from north east to south west direction and meet master drainage Gopad river near Hatta village in the south west of the block. Sukher Nala is a 5 th order stream while Chunaiya Nala is a 3 rd order stream.
	Rivers	
5.	Exploration	

Status	Regionally Explored				
Exploration Agency	GSI, CMPDI				
Total Number of Boreholes with meterage	54 Boreholes; 25591.70 m (CMPDI: 38 Boreholes, 16022.00 m and GSI: 16 Boreholes, 9569.70 m).				
Borehole Density	Approx. 2.86 Boreholes/sq.km.				
General Dip of Seams	Dip of the bed varies from 2° to 7° SSW in most part of the block.				
General Strike Direction	The strike of the coal seam is generally E-W in the block but at north eastern part it swings almost N-S.				
6. Coal Seams & Reserve					
	Coal Seams	Thickness Range (m)	Depth Range (m)	Geological Reserve (MT)	Grade
	VIII	0.48-2.10	230.22-361.70	24.2388	G7-G15
	VII	0.40-3.75	236.70-394.94	67.3928	G6-G11
	VI	0.76-2.42	285.10-419.06	26.3141	G8-G15
	V	0.78-0.90	281.10-404.67	16.5688	G13
	IV-COMB	1.12-1.69	351.77-489.85		G5-G8
	IV-TOP	0.33-1.32	371.53-433.70	2.1349	G9-G15
	IV-BOT	0.80-2.68	378.22-440.20	9.2893	G7-G14
	L2	0.20-3.44	383.45-503.23	16.6128	G4-G12
	L1	0.65-1.56	403.75-453.02		G5-G11
	III-COMB	0.39-1.95	428.00-560.60	2.29	G3-G8
	III-TOP	0.45-1.55	416.28-488.38	12.2797	G3-G8
	III-BOT	0.52-0.75	418.67-488.38	4.3774	G7-G9
	II-COMB	0.75-1.88	451.93-503.33	2.9727	-
	II-TOP	0.40-2.33	440.21-582.18	19.7029	G4-G9
	II-BOT	0.19-2.44	444.86-595.27	17.8245	G5-G10
	I	0.29-2.11	465.17-540.06	15.0831	G3-G17
		Total		237.0819	
7.	Surface Constraints	NA			
8.	Grade of the block	G8 (Provisional) based on weighted average grade as per data of regional geological report.			
9.	Decision Support System (DSS) Analysis	Wildlife Info: The polygon touches Wildlife Habitat(s).-Sloth Bear			
10.	Eco Sensitive Zone (ESZ) Analysis	Approx. 0.7 km from the boundary of ESZ of Sanjay Dubri WLS. Approx. 3 km from the boundary of Sanjay-Dubri TR-PA.			

Note:

1. The above data is compiled from Geological Report, Mining Plan and the data furnished by the prior allottee in Annexure-I/II, as available. For clarifications with regard to above data, please refer aforesaid source documents.
2. The boundary of the block has been taken from GR after conversion to WGS84 system by feature matching. The block boundary is provisional and the cardinal points, bounding co-ordinates are approximate.

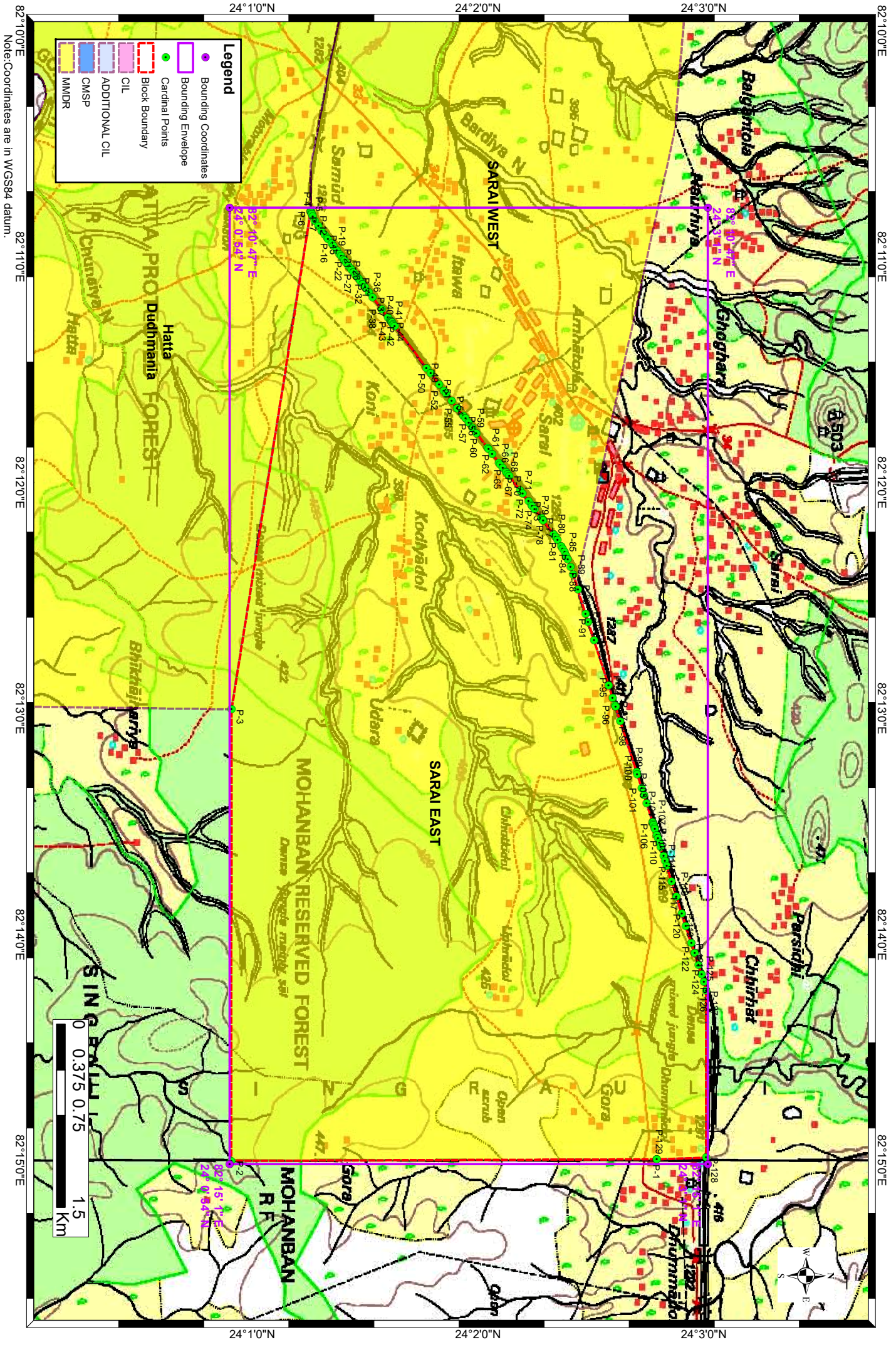
3. There is a difference in area in the shape file and GR. Area in the shape file is based on feature mapped plan of the block as given in the GR. So, the area is tentative and field DGPS survey is required to ascertain the exact area.

Disclaimer:

1. The analysis is done on Beta-version (Trial Version) of Decision Support System (DSS) of FSI/MOEF.
2. The Decision Rules for various parameters of this DSS System are controlled by FSI.
3. CMPDI only runs this DSS to obtain the status of any block based on these Decision Rules.
4. The database of the Decision Rules is updated by FSI from time to time.
5. CMPDI does not own any responsibility for variation in the results which are based on the decision Rules of the FSI DSS in case of any updation of the database at FSI end.
6. ESZ analysis and tiger habitat/ corridor given here is based on the information available in public domain. Bidders are encouraged to verify this information and any other information additionally available.

Sarai East Block, Singrauli Coalfield

FOR INTERNAL/RESTRICTED USE ONLY



Provisional Cardinal Points for SARAI EAST Block

POINT NO	Longitude (WGS84)	Latitude (WGS84)
P-1	82° 14' 59.695" E	24° 2' 47.455" N
P-2	82° 15' 0.119" E	24° 0' 54.410" N
P-3	82° 13' 0.189" E	24° 0' 54.524" N
P-4	82° 10' 47.987" E	24° 1' 15.519" N
P-5	82° 10' 47.917" E	24° 1' 15.519" N
P-6	82° 10' 47.915" E	24° 1' 15.519" N
P-7	82° 10' 48.035" E	24° 1' 15.563" N
P-8	82° 10' 48.319" E	24° 1' 15.668" N
P-9	82° 10' 48.701" E	24° 1' 15.809" N
P-10	82° 10' 48.714" E	24° 1' 15.814" N
P-11	82° 10' 49.206" E	24° 1' 16.041" N
P-12	82° 10' 50.443" E	24° 1' 16.613" N
P-13	82° 10' 51.873" E	24° 1' 17.574" N
P-14	82° 10' 53.081" E	24° 1' 18.385" N
P-15	82° 10' 54.173" E	24° 1' 19.260" N
P-16	82° 10' 55.007" E	24° 1' 19.871" N
P-17	82° 10' 55.339" E	24° 1' 20.129" N
P-18	82° 10' 56.566" E	24° 1' 21.070" N
P-19	82° 10' 57.186" E	24° 1' 21.587" N
P-20	82° 10' 58.373" E	24° 1' 22.481" N
P-21	82° 10' 59.223" E	24° 1' 23.121" N
P-22	82° 10' 59.846" E	24° 1' 23.591" N
P-23	82° 11' 0.633" E	24° 1' 24.224" N
P-24	82° 11' 0.945" E	24° 1' 24.475" N
P-25	82° 11' 1.556" E	24° 1' 24.916" N
P-26	82° 11' 2.404" E	24° 1' 25.576" N
P-27	82° 11' 3.128" E	24° 1' 26.142" N
P-28	82° 11' 3.508" E	24° 1' 26.404" N
P-29	82° 11' 4.137" E	24° 1' 26.903" N
P-30	82° 11' 4.901" E	24° 1' 27.471" N
P-31	82° 11' 5.534" E	24° 1' 27.973" N
P-32	82° 11' 5.966" E	24° 1' 28.316" N
P-33	82° 11' 6.628" E	24° 1' 28.807" N
P-34	82° 11' 7.289" E	24° 1' 29.298" N
P-35	82° 11' 8.167" E	24° 1' 30.002" N
P-36	82° 11' 9.448" E	24° 1' 30.966" N
P-37	82° 11' 10.765" E	24° 1' 31.960" N
P-38	82° 11' 13.855" E	24° 1' 34.335" N
P-39	82° 11' 16.022" E	24° 1' 35.997" N
P-40	82° 11' 16.879" E	24° 1' 36.662" N
P-41	82° 11' 17.061" E	24° 1' 36.803" N
P-42	82° 11' 17.191" E	24° 1' 36.903" N
P-43	82° 11' 17.289" E	24° 1' 36.979" N
P-44	82° 11' 17.394" E	24° 1' 37.060" N
P-45	82° 11' 17.519" E	24° 1' 37.156" N
P-46	82° 11' 17.858" E	24° 1' 37.412" N
P-47	82° 11' 18.143" E	24° 1' 37.627" N

Provisional Cardinal Points for SARAI EAST Block

POINT NO	Longitude (WGS84)	Latitude (WGS84)
P-48	82° 11' 18.436" E	24° 1' 37.848" N
P-49	82° 11' 29.523" E	24° 1' 46.312" N
P-50	82° 11' 31.000" E	24° 1' 47.404" N
P-51	82° 11' 33.885" E	24° 1' 49.665" N
P-52	82° 11' 35.608" E	24° 1' 50.890" N
P-53	82° 11' 36.480" E	24° 1' 51.578" N
P-54	82° 11' 38.315" E	24° 1' 52.991" N
P-55	82° 11' 40.210" E	24° 1' 54.436" N
P-56	82° 11' 42.282" E	24° 1' 56.103" N
P-57	82° 11' 42.947" E	24° 1' 56.638" N
P-58	82° 11' 44.114" E	24° 1' 57.506" N
P-59	82° 11' 45.422" E	24° 1' 58.478" N
P-60	82° 11' 46.841" E	24° 1' 59.533" N
P-61	82° 11' 50.689" E	24° 2' 2.461" N
P-62	82° 11' 51.100" E	24° 2' 2.771" N
P-63	82° 11' 52.399" E	24° 2' 3.757" N
P-64	82° 11' 54.691" E	24° 2' 5.524" N
P-65	82° 11' 55.140" E	24° 2' 5.871" N
P-66	82° 11' 56.078" E	24° 2' 6.571" N
P-67	82° 11' 57.121" E	24° 2' 7.373" N
P-68	82° 11' 57.235" E	24° 2' 7.460" N
P-69	82° 11' 57.835" E	24° 2' 7.920" N
P-70	82° 11' 58.288" E	24° 2' 8.264" N
P-71	82° 12' 2.029" E	24° 2' 11.130" N
P-72	82° 12' 2.901" E	24° 2' 11.846" N
P-73	82° 12' 4.961" E	24° 2' 13.426" N
P-74	82° 12' 5.943" E	24° 2' 14.142" N
P-75	82° 12' 6.143" E	24° 2' 14.296" N
P-76	82° 12' 7.046" E	24° 2' 14.991" N
P-77	82° 12' 9.385" E	24° 2' 16.792" N
P-78	82° 12' 9.910" E	24° 2' 17.196" N
P-79	82° 12' 9.998" E	24° 2' 17.264" N
P-80	82° 12' 13.624" E	24° 2' 20.014" N
P-81	82° 12' 14.389" E	24° 2' 20.561" N
P-82	82° 12' 15.190" E	24° 2' 21.094" N
P-83	82° 12' 16.797" E	24° 2' 22.069" N
P-84	82° 12' 17.509" E	24° 2' 22.470" N
P-85	82° 12' 18.437" E	24° 2' 22.944" N
P-86	82° 12' 19.409" E	24° 2' 23.374" N
P-87	82° 12' 20.444" E	24° 2' 23.833" N
P-88	82° 12' 22.339" E	24° 2' 24.535" N
P-89	82° 12' 24.422" E	24° 2' 25.255" N
P-90	82° 12' 28.429" E	24° 2' 26.521" N
P-91	82° 12' 34.824" E	24° 2' 28.539" N
P-92	82° 12' 36.980" E	24° 2' 29.251" N
P-93	82° 12' 41.917" E	24° 2' 30.805" N
P-94	82° 12' 53.892" E	24° 2' 34.667" N

Provisional Cardinal Points for SARAI EAST Block

POINT NO	Longitude (WGS84)	Latitude (WGS84)
P-95	82° 12' 57.132" E	24° 2' 35.688" N
P-96	82° 12' 59.120" E	24° 2' 36.371" N
P-97	82° 12' 59.526" E	24° 2' 36.511" N
P-98	82° 13' 3.381" E	24° 2' 37.733" N
P-99	82° 13' 16.826" E	24° 2' 42.099" N
P-100	82° 13' 17.432" E	24° 2' 42.293" N
P-101	82° 13' 21.172" E	24° 2' 43.490" N
P-102	82° 13' 22.989" E	24° 2' 44.072" N
P-103	82° 13' 25.066" E	24° 2' 44.737" N
P-104	82° 13' 29.999" E	24° 2' 46.317" N
P-105	82° 13' 30.359" E	24° 2' 46.412" N
P-106	82° 13' 30.669" E	24° 2' 46.522" N
P-107	82° 13' 30.921" E	24° 2' 46.612" N
P-108	82° 13' 31.660" E	24° 2' 46.837" N
P-109	82° 13' 32.021" E	24° 2' 46.947" N
P-110	82° 13' 33.629" E	24° 2' 47.437" N
P-111	82° 13' 34.516" E	24° 2' 47.753" N
P-112	82° 13' 35.717" E	24° 2' 48.140" N
P-113	82° 13' 36.847" E	24° 2' 48.504" N
P-114	82° 13' 39.188" E	24° 2' 49.259" N
P-115	82° 13' 40.458" E	24° 2' 49.668" N
P-116	82° 13' 41.771" E	24° 2' 50.067" N
P-117	82° 13' 45.864" E	24° 2' 51.376" N
P-118	82° 13' 49.856" E	24° 2' 52.652" N
P-119	82° 13' 54.401" E	24° 2' 54.106" N
P-120	82° 13' 57.737" E	24° 2' 55.173" N
P-121	82° 14' 2.270" E	24° 2' 56.622" N
P-122	82° 14' 4.844" E	24° 2' 57.526" N
P-123	82° 14' 4.875" E	24° 2' 57.537" N
P-124	82° 14' 8.025" E	24° 2' 58.540" N
P-125	82° 14' 10.602" E	24° 2' 59.343" N
P-126	82° 14' 12.596" E	24° 3' 0.000" N
P-127	82° 14' 14.919" E	24° 3' 0.595" N
P-128	82° 14' 59.278" E	24° 3' 0.584" N