

SALBHADRA GOMARPAHARI Block Summary
PART A

Sr. No.	Features	Details
1.	Location	
	Coal Block	SALBHADRA GOMARPAHARI BLOCK
	Latitude	24° 7' 55" N- 24° 9' 55" N (Provisional)
	Longitude	87° 34' 28" E- 87° 37' 31" E (Provisional)
	Topo Sheet No.	72 P/12
	Coalfield	Birbhum
	Villages	Salbhadra, Senbadha, Mejian Para, Parachua etc.
	Tehsil/Taluka	Rampurhat
	District	Birbhum
	State	West Bengal
2.	Connectivity with Block	
	Nearest Rail Head	Mallarpur
	Road	The sector is located North of Panagarh-Moregram National Highway (N.H.60) and south of Rampurhat-Dumka State Highway.
	Airport	Nearest Airport is Kazi Nazrul Islam Airport, Andal, Durgapur.
3.	Area	
	Geological Block Area	9.17 sq km (As per shape file, Refer Note below)
	Green Cover	NIL
	Area excluding green cover	9.17 sq.km
4.	Climate and Topography	
	Average Annual Rainfall	Average annual rainfall is 1430 mm.
	Temperature (Min. — Max.)	The temperature varies from 12.7°C to 28.3°C in winter and from 25.5°C to 41.5°C in summer.
	Local Surface Drainage Channels	The terrain is low upland of rolling topography having general altitude between 60m and 100m above M.S.L. and is ornamented with red lateritic cappings (duricrust) and black rocky exposures of basalt. Mansa Pahar (maximum height 228m) is the main physiographic feature of the area and occurs southwest of the sector. The overall slope of the area is towards east. Small streamlets fed by rainwater and springs have formed a dendritic drainage pattern in the area.
	Rivers	
5.	Exploration	
	Status	EXPLORED

	Exploration Agency	GSI, CMPDIL			
	Total Number of Boreholes with meterage	Total no of Borehole is 67 and total meterage is 28668.6 m			
	Borehole Density	5.99/Sq.Km.			
	General Dip of Seams	On the northern side beds are dipping towards west but on southern portion beds are dipping towards south west with a dip amount of 2° to 6°.			
	General Strike Direction	NW-SE with notable swings in the strike towards NNW-SSE in the northern part.			
	Faults	A total of 7 no of faults (F1-F1 to F7-F7) has been interpreted in the block on the basis of evidences in the boreholes as well as variation in the seam gradient and strike. The faults are normal strike faults running almost parallel to the strike of the beds and dip 700-750 towards east-north-east to north-east. Only F1 and F7 faults are dipping towards WSW-SW.			
6.	Coal Seams & Reserve				
	Coal Seams	Thickness Range (m)	Depth Range (m)	Resources (mt)	Grade
	5B	1.28-7.55	110.9-130.75	8.106	G12
	5A	0.9-10.3	117.85-135.45	12.554	G11-G12
	4F	4.5-9.5	155.25-198.46	42.160	G11-G12
	4F TOP	0.6-3.4	163-199.15	1.442	G9-G12
	4F BOT	1.1-4.1	173.50-207.85	6.198	G9-G10
	4E	1.7-11.35	161.70-227.00	96.648	G11-G12
	4D	1.9-7.85	194.30-232.00	8.043	G8-G9
	4D TOP	0.3-3.46	191.23-236.15	7.701	G7-G9
	4D BOT	1.75-5.75	173.70-243.35	26.891	G7-G10
	4C TOP	0.15-4.15	184.5-257.89	11.349	G9-G10
	4C MID	0.26-3.9	202.3-268.71	9.675	G8-G10
	4C BOT	0.2-6.7	190.0-271.25	16.409	G8-G9
	4B	3-5.86	185.4-271.1	11.896	G7-G8
	4B TOP	0.3-4.5	241.17-289.83	9.463	G7-G8
	4B MID	0.7-4.8	248.45-296.8	13.394	G6-G8
	4B BOT	0.3-1.5	252.90-316.00	3.672	G7-G10
	4A	0.4-9.7	205.75-312.30	22.211	G6-G9
	4A TOP	0.25-2.5	261.45-327.10	1.838	G9-G10
	4A BOT	0.66-5.05	264.60-337.35	8.864	G7-G8
	3	5.5-24.35	218.00-349.15	137.209	G7-G8
	3 TOP	1.7-10.12	297.20-332.12	16.382	G8-G9
	3 BOT	10.88-14.85	306.20-340.29	33.192	G8
	2B	1.25-3.08	321.55-345.40		G8
	2B TOP	0.35-1.9	301.00-360.31	3.718	G10
	2B BOT	0.3-1.45	306.1-364.98	2.355	G10-G12
	2A	0.45-7.9	309.85-371.32	5.441	G11
	2A Top	0.3-1.6	253.20-359.00	3.992	G12-G13
	2A Bot	0.2-3.45	256.50-362.95	8.596	G11-G12

	1B	0.7-8.0	183.65-413.93	46.560	G12
	1A	1.15-7.26	180.70-396.55	9.873	G12
	1SP	0.3-15.8	204.30-419.55	7.365	G8-G9
	L0	0.8-2.7	259.77-434.30	4.867	G16
	Total			599.469	
7.	Surface Constraints	Presence of several stone quarry in the block.			
8.	Grade of coal	G10 (Provisional) Based on data available in GR.			
9.	Decision Support System (DSS) Analysis	-			
10.	Eco Sensitive Zone (ESZ)	Approx. 89 km from the boundary of ESZ of Udawa lake.			

PART B

Sr. No.	Features	Details
1	Tentative Peak rated Capacity	8 Mty

Note:

1. The summary has been compiled from Geological Report on Coal Exploration of Salbhadra Gomarparhari Block, Birbhum Coalfield February,2020 By CMPDIL, RI-I.
2. The block boundary is provisional and the cardinal points, bounding co-ordinates are approximate. Field DGPS survey is required to ascertain the exact area.

Disclaimer:

1. The analysis is done on Beta-version (Trial Version) of Decision Support System (DSS) of FSI / MOEF.
2. The Decision Rules for various parameters of this DSS System are controlled by FSI.
3. CMPDI only runs this DSS to obtain the status of any block based on these Decision Rules.
4. The database of the Decision Rules is updated by FSI from time to time.
5. CMPDI does not own any responsibility for variation in the results which are based on the Decision Rules of the FSI DSS in case of any updation of the database at FSI end.
6. ESZ analysis and tiger habitat/ corridor given here is based on the information available in public domain. Bidders are encouraged to verify this information and any other information additionally available.

87°34'0"E 87°35'0"E 87°36'0"E 87°37'0"E

87°34'0"E 87°35'0"E 87°36'0"E 87°37'0"E

24°8'0"N 24°9'0"N 24°10'0"N

24°8'0"N 24°9'0"N 24°10'0"N

Salbhadra Gomarparhari Block, Birtum Coalfield

FOR INTERNAL/RESTRICTED USE ONLY

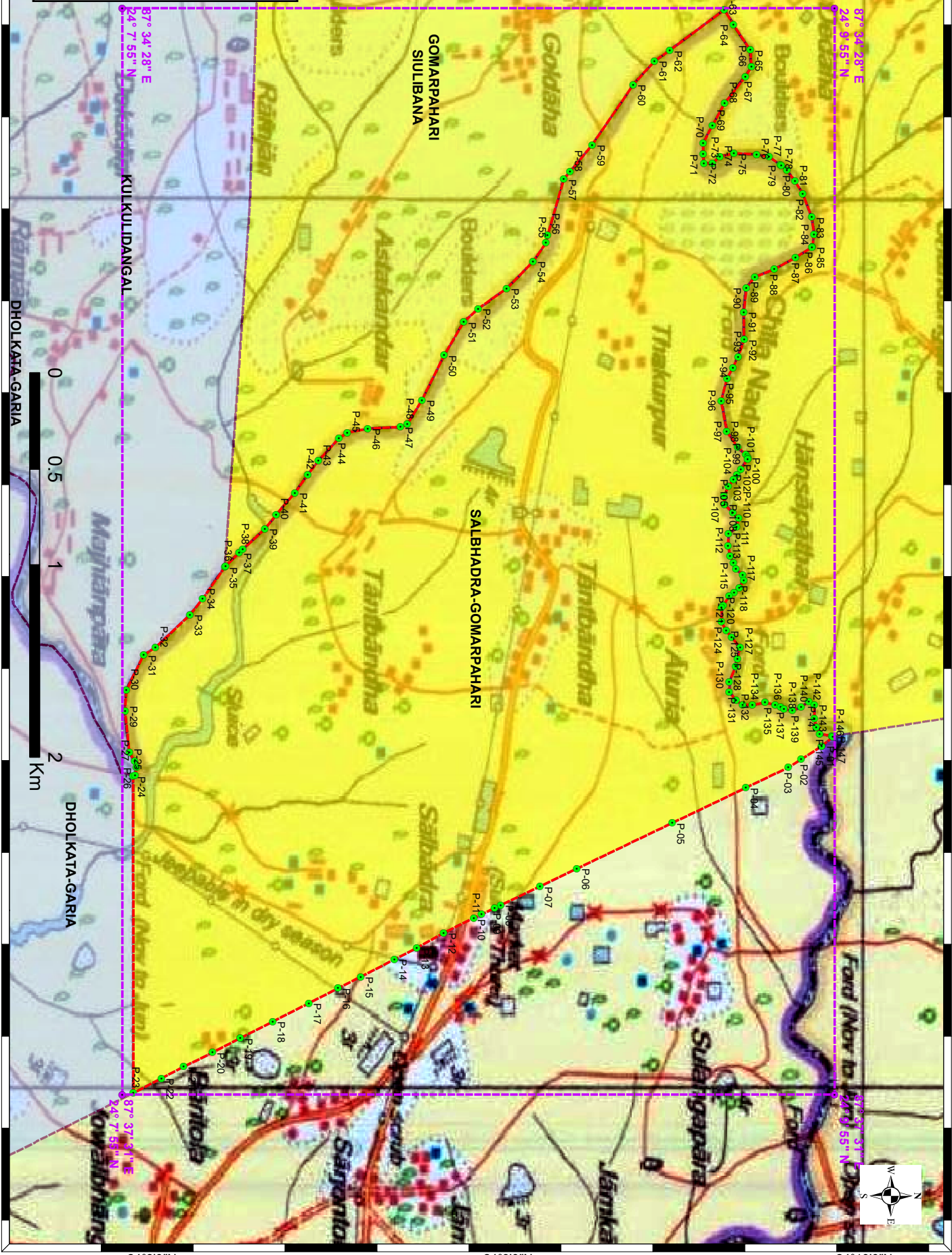
Legend

- Bounding Points
- Bounding Envelope
- Cardinal Points
- Block Boundary

OCBIS_BLOCKS

Category

- CIL
- ADDITIONAL CIL
- CMSP
- MMDR
- SCCL



Provisional Cardinal Points for SALBHADRA-GOMARPAHARI Block

POINT NO	Longitude (WGS84)	Latitude (WGS84)
P-1	87° 36' 32.330" E	24° 9' 52.834" N
P-2	87° 36' 34.541" E	24° 9' 49.348" N
P-3	87° 36' 35.908" E	24° 9' 47.194" N
P-4	87° 36' 39.342" E	24° 9' 40.013" N
P-5	87° 36' 45.271" E	24° 9' 27.615" N
P-6	87° 36' 52.945" E	24° 9' 11.579" N
P-7	87° 36' 55.933" E	24° 9' 5.341" N
P-8	87° 36' 59.101" E	24° 8' 58.768" N
P-9	87° 36' 59.614" E	24° 8' 57.704" N
P-10	87° 37' 0.636" E	24° 8' 55.522" N
P-11	87° 37' 1.274" E	24° 8' 54.188" N
P-12	87° 37' 3.797" E	24° 8' 49.075" N
P-13	87° 37' 6.322" E	24° 8' 44.586" N
P-14	87° 37' 8.256" E	24° 8' 40.839" N
P-15	87° 37' 11.157" E	24° 8' 35.141" N
P-16	87° 37' 13.091" E	24° 8' 31.356" N
P-17	87° 37' 15.614" E	24° 8' 26.438" N
P-18	87° 37' 18.725" E	24° 8' 20.350" N
P-19	87° 37' 21.500" E	24° 8' 14.886" N
P-20	87° 37' 23.938" E	24° 8' 10.163" N
P-21	87° 37' 26.334" E	24° 8' 5.324" N
P-22	87° 37' 28.268" E	24° 8' 1.616" N
P-23	87° 37' 30.758" E	24° 7' 56.852" N
P-24	87° 36' 37.378" E	24° 7' 56.814" N
P-25	87° 36' 37.225" E	24° 7' 57.169" N
P-26	87° 36' 35.910" E	24° 7' 57.388" N
P-27	87° 36' 34.871" E	24° 7' 57.035" N
P-28	87° 36' 33.343" E	24° 7' 56.183" N
P-29	87° 36' 26.440" E	24° 7' 55.455" N
P-30	87° 36' 22.901" E	24° 7' 55.664" N
P-31	87° 36' 16.965" E	24° 7' 58.585" N
P-32	87° 36' 15.694" E	24° 8' 0.589" N
P-33	87° 36' 13.919" E	24° 8' 2.455" N
P-34	87° 36' 10.177" E	24° 8' 6.389" N
P-35	87° 36' 7.474" E	24° 8' 8.524" N
P-36	87° 36' 2.156" E	24° 8' 12.270" N
P-37	87° 36' 2.003" E	24° 8' 12.402" N
P-38	87° 35' 59.749" E	24° 8' 14.663" N
P-39	87° 35' 59.175" E	24° 8' 15.308" N
P-40	87° 35' 55.709" E	24° 8' 19.008" N
P-41	87° 35' 53.305" E	24° 8' 20.914" N
P-42	87° 35' 49.667" E	24° 8' 24.043" N
P-43	87° 35' 46.562" E	24° 8' 26.232" N
P-44	87° 35' 44.238" E	24° 8' 28.040" N
P-45	87° 35' 40.425" E	24° 8' 31.484" N
P-46	87° 35' 39.503" E	24° 8' 32.908" N
P-47	87° 35' 38.809" E	24° 8' 36.328" N

Provisional Cardinal Points for SALBHADRA-GOMARPAHARI Block

P-48	87° 35' 38.538" E	24° 8' 41.861" N
P-49	87° 35' 38.079" E	24° 8' 42.999" N
P-50	87° 35' 34.013" E	24° 8' 45.470" N
P-51	87° 35' 26.451" E	24° 8' 49.203" N
P-52	87° 35' 20.863" E	24° 8' 52.511" N
P-53	87° 35' 18.606" E	24° 8' 54.912" N
P-54	87° 35' 15.223" E	24° 8' 59.720" N
P-55	87° 35' 10.695" E	24° 9' 4.175" N
P-56	87° 35' 7.536" E	24° 9' 6.341" N
P-57	87° 35' 6.176" E	24° 9' 6.609" N
P-58	87° 34' 56.791" E	24° 9' 9.365" N
P-59	87° 34' 55.543" E	24° 9' 10.424" N
P-60	87° 34' 50.984" E	24° 9' 14.162" N
P-61	87° 34' 40.889" E	24° 9' 21.039" N
P-62	87° 34' 36.904" E	24° 9' 24.618" N
P-63	87° 34' 35.088" E	24° 9' 27.213" N
P-64	87° 34' 28.238" E	24° 9' 36.401" N
P-65	87° 34' 30.776" E	24° 9' 37.940" N
P-66	87° 34' 35.008" E	24° 9' 40.763" N
P-67	87° 34' 37.822" E	24° 9' 41.010" N
P-68	87° 34' 39.505" E	24° 9' 39.971" N
P-69	87° 34' 43.990" E	24° 9' 36.470" N
P-70	87° 34' 47.778" E	24° 9' 34.391" N
P-71	87° 34' 50.724" E	24° 9' 32.831" N
P-72	87° 34' 52.552" E	24° 9' 32.824" N
P-73	87° 34' 54.100" E	24° 9' 32.948" N
P-74	87° 34' 54.106" E	24° 9' 34.367" N
P-75	87° 34' 52.987" E	24° 9' 35.662" N
P-76	87° 34' 52.435" E	24° 9' 37.987" N
P-77	87° 34' 52.593" E	24° 9' 41.857" N
P-78	87° 34' 53.024" E	24° 9' 43.920" N
P-79	87° 34' 54.337" E	24° 9' 45.829" N
P-80	87° 34' 54.470" E	24° 9' 45.976" N
P-81	87° 34' 55.314" E	24° 9' 46.913" N
P-82	87° 34' 57.147" E	24° 9' 48.335" N
P-83	87° 34' 59.296" E	24° 9' 49.624" N
P-84	87° 35' 3.173" E	24° 9' 51.101" N
P-85	87° 35' 6.117" E	24° 9' 51.516" N
P-86	87° 35' 8.190" E	24° 9' 51.226" N
P-87	87° 35' 8.241" E	24° 9' 51.167" N
P-88	87° 35' 9.998" E	24° 9' 48.387" N
P-89	87° 35' 11.969" E	24° 9' 44.817" N
P-90	87° 35' 13.270" E	24° 9' 41.545" N
P-91	87° 35' 15.121" E	24° 9' 40.118" N
P-92	87° 35' 19.222" E	24° 9' 39.676" N
P-93	87° 35' 23.866" E	24° 9' 39.729" N
P-94	87° 35' 26.803" E	24° 9' 38.723" N
P-95	87° 35' 28.522" E	24° 9' 37.823" N

Provisional Cardinal Points for SALBHADRA-GOMARPAHARI Block

P-96	87° 35' 30.355" E	24° 9' 36.863" N
P-97	87° 35' 34.144" E	24° 9' 35.854" N
P-98	87° 35' 39.334" E	24° 9' 36.828" N
P-99	87° 35' 41.975" E	24° 9' 38.664" N
P-100	87° 35' 43.142" E	24° 9' 40.009" N
P-101	87° 35' 43.664" E	24° 9' 40.326" N
P-102	87° 35' 43.840" E	24° 9' 40.433" N
P-103	87° 35' 44.020" E	24° 9' 40.310" N
P-104	87° 35' 45.672" E	24° 9' 39.177" N
P-105	87° 35' 46.582" E	24° 9' 38.521" N
P-106	87° 35' 47.386" E	24° 9' 37.929" N
P-107	87° 35' 48.547" E	24° 9' 37.076" N
P-108	87° 35' 50.169" E	24° 9' 36.360" N
P-109	87° 35' 51.640" E	24° 9' 36.425" N
P-110	87° 35' 53.040" E	24° 9' 37.840" N
P-111	87° 35' 53.896" E	24° 9' 38.831" N
P-112	87° 35' 55.365" E	24° 9' 38.470" N
P-113	87° 35' 56.520" E	24° 9' 37.116" N
P-114	87° 35' 58.532" E	24° 9' 37.037" N
P-115	87° 36' 0.314" E	24° 9' 37.385" N
P-116	87° 36' 1.454" E	24° 9' 37.922" N
P-117	87° 36' 2.408" E	24° 9' 38.371" N
P-118	87° 36' 3.420" E	24° 9' 39.504" N
P-119	87° 36' 4.350" E	24° 9' 39.713" N
P-120	87° 36' 5.662" E	24° 9' 38.927" N
P-121	87° 36' 6.366" E	24° 9' 38.058" N
P-122	87° 36' 7.047" E	24° 9' 37.217" N
P-123	87° 36' 8.540" E	24° 9' 36.221" N
P-124	87° 36' 8.976" E	24° 9' 35.931" N
P-125	87° 36' 11.376" E	24° 9' 35.921" N
P-126	87° 36' 12.850" E	24° 9' 36.697" N
P-127	87° 36' 14.001" E	24° 9' 37.639" N
P-128	87° 36' 15.726" E	24° 9' 39.100" N
P-129	87° 36' 17.592" E	24° 9' 38.633" N
P-130	87° 36' 18.895" E	24° 9' 38.306" N
P-131	87° 36' 21.445" E	24° 9' 37.231" N
P-132	87° 36' 23.225" E	24° 9' 37.224" N
P-133	87° 36' 24.624" E	24° 9' 38.425" N
P-134	87° 36' 25.326" E	24° 9' 39.488" N
P-135	87° 36' 25.411" E	24° 9' 41.121" N
P-136	87° 36' 24.957" E	24° 9' 43.254" N
P-137	87° 36' 25.352" E	24° 9' 44.956" N
P-138	87° 36' 25.745" E	24° 9' 45.867" N
P-139	87° 36' 26.001" E	24° 9' 46.461" N
P-140	87° 36' 26.294" E	24° 9' 47.865" N
P-141	87° 36' 25.682" E	24° 9' 49.358" N
P-142	87° 36' 24.759" E	24° 9' 50.641" N
P-143	87° 36' 25.383" E	24° 9' 51.561" N

Provisional Cardinal Points for SALBHADRA-GOMARPAHARI Block

P-144	87° 36' 27.628" E	24° 9' 51.552" N
P-145	87° 36' 29.177" E	24° 9' 51.901" N
P-146	87° 36' 30.264" E	24° 9' 52.465" N
P-147	87° 36' 30.583" E	24° 9' 54.524" N
P-148	87° 36' 30.705" E	24° 9' 54.689" N

Note: The provisional cardinal points are in WGS84 coordinate system. These points are extracted through ArcGIS software after georeferencing of block boundary and onground DGPS survey is required to ascertain the exact location of the points.