

SHRAVANAPALLI BLOCK SUMMARY
PART A

Sr. No.	Features	Details
1.	Location	
	Coal Block	SHRAVANAPALLI
	Latitude	18°56'56" N-19° 17' 12" N (Provisional)
	Longitude	79° 32'19" E-79°36'40" E (Provisional)
	Topo Sheet No.	E-44H9 (56 N/9) & E-44B12 (56 /12)
	Coalfield	GODAVARI VALLEY COAL FIELD
	Villages	Nil
	Tehsil/Taluka	MANCHIRYAL
	District	MANCHIRYAL
	State	TELANGANA
2.	Connectivity with Block	
	Nearest Rail Head	The nearest rail stations are Bellampalli and Mandamarri on Balharsha-Kazipet section of South Central Railway, situated at a distance of 10km and 14km respectively.
	Road	Nagpur-Hyderabad state Highway is about 7.5km away from the block. The state capital, Hyderabad 270km away from the block.
	Airport	Hyderabad
3.	Area	
	Geological Block Area	18.63 Sq.Km (15.05Sq.km explored& 3.58 Sq.km being explored)
	Forest Area	Within the explored block area (15.05 sq.km), an area of about 8.51 sq.km (56.56%) falls in Bellampalli reserved forest.
	Non-Forest Area	6.54 Sq.km.
4.	Climate and Topography	
	Average Annual Rainfall	The mean annual rainfall is 886.6 mm.
	Temperature (Min. — Max.)	11° - 49°C
	Local Surface Drainage Channels	The drainage network is very poorly developed.
	Rivers	No
5.	Exploration	

	Status	Detailed exploration is completed in the year 1999 in an area of 15.05Sq.km.In remaining area i.e. 3.58Sq.km exploration being carried out.			
	Exploration Agency	SCCL			
	Total Number of Boreholes with meterage	Boreholes & m 153 BH /31692.55m (with in 15.05 Sq.km. area.)			
	Borehole Density	Approx.boreholes per sq km : 10.16			
	General Dip of Seams	North East			
	General Strike Direction	The general trend of the coal seams is NW –SE.			
	Faults	A total of 5 faults have been deciphered from subsurface data.			
6.	Coal Seams & Reserve				
	Coal Seams	Thickness Range (m)	Depth Range (m)	Resources (mt)	Grade
	IA	0.21 - 0.90	40.52 – 275.28	6.1572	E,F&G
	I TOP	0.13 - 0.75	24.50 – 292.30	4.2218	D&E
	I BOT	1.00 – 2.00	29.00 – 294.15	21.9298	D&E
	II	4.00 – 8.00	23.60 – 321.00	97.0438	E,F&G
	LB-1	0.65 – 3.01	25.20 – 343.95	32.3568	E&F
	3B	0.15 – 1.90	34.00 – 355.35	10.5267	E&F
	3A	0.18 – 1.15	105.50 – 372.95	1.2425	D,E&F
	SJT	0.18 – 2.98	30.50 – 388.10	22.8093	D,E,F&G
	SJB	0.30 – 2.30	44.25 – 408.00	8.8991	D&E
	LB-2	0.13 – 1.50	43.50 - 407.78	13.5398	C,D&E
	ROSS	0.09 – 2.00	64.50 – 420.50	0.8604	D&E
	Total			219.5872	
7.	Surface Constraints	About 8.51 sq. km. (56%) of the area in the block is covered by dense mixed jungle of Belampalli Reserve Forest.			
8.	Grade of coal	G-10(Provisional) based on weighted average grade as per grade-wise data available in Mining plan			
9.	Decision Support System (DSS) Analysis				
10.	Eco Sensitive Zone (ESZ)	Nil			

PART B

Sr. No.	Features	Details
1	PRC as per Mining Plan	2.3 Mty

Note:

1. The summary has been compiled from “**GEOLOGICAL REPORT ON SHRAVANAPALLI OCP**”, **DORLI -BELLAMPALLI COAL BELT OF GVCF, MANCHIRYAL DIST. TELANGANA.**
2. The block boundary is provisional and the cardinal points, bounding co-ordinates are approximate. Field DGPS survey is required to ascertain the exact area.
3. The above information has been provided from M/s SCCL

SRAVANAPALLI OCP BLOCK

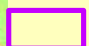





SHANTHIKHANI BLOCK

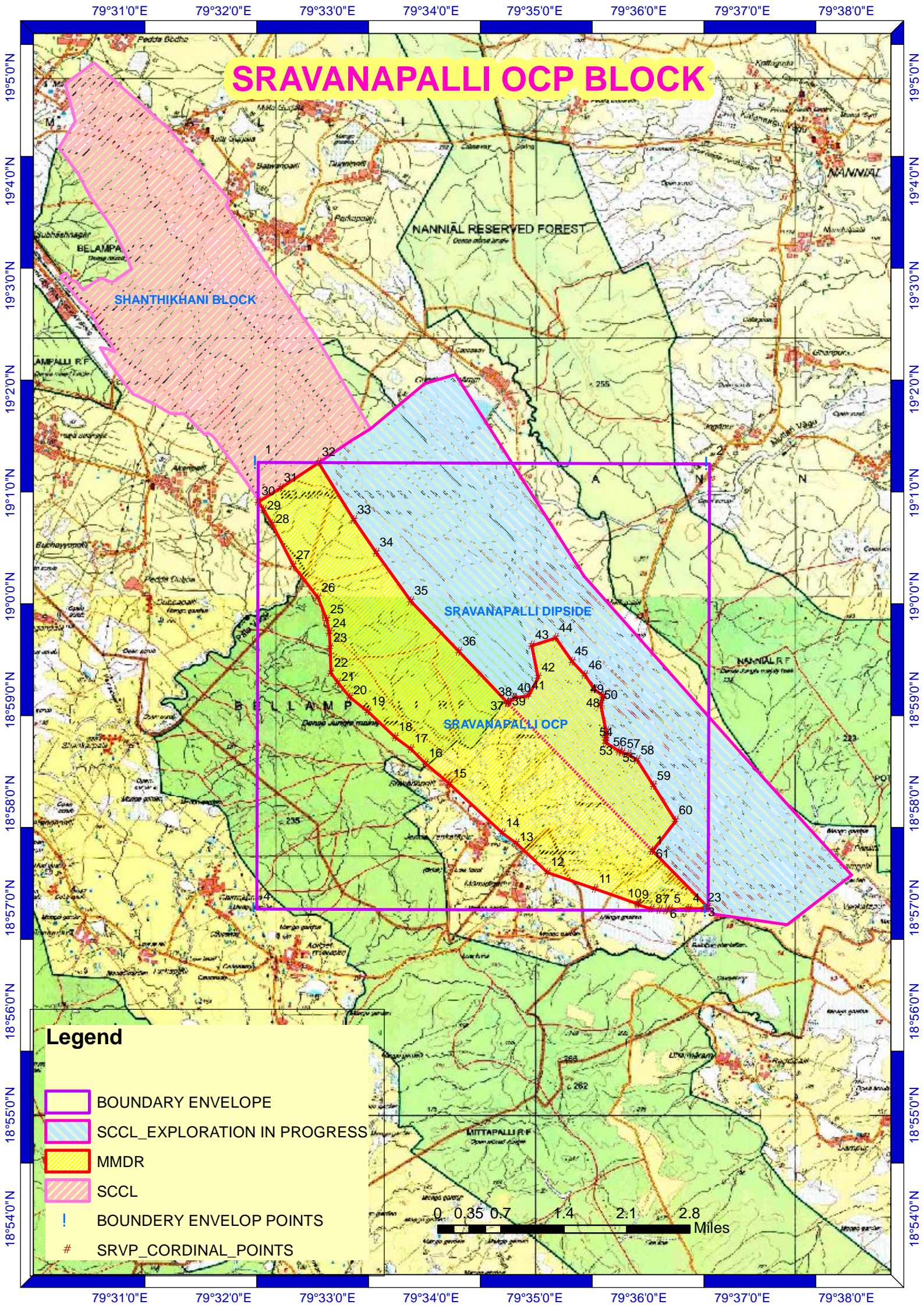
NANNIAL RESERVED FOREST

SRAVANAPALLI DIPSIDE

SRAVANAPALLI OCP

Legend

-  BOUNDARY ENVELOPE
-  SCCL_EXPLORATION IN PROGRESS
-  MMDR
-  SCCL
-  BOUNDARY ENVELOPE POINTS
-  SRVP_CORDINAL_POINTS



Provisional Cardinal Points for Shravanapalli Block

S.NO	LATITUDE	LONGITUDE
1	18°57'32.859107"N	79°36'7.922364"E
2	18°57'50.083923"N	79°36'21.155591"E
3	18°58'10.229741"N	79°36'8.401439"E
4	18°58'25.123623"N	79°35'59.021459"E
5	18°58'28.483295"N	79°35'54.091305"E
6	18°58'29.552211"N	79°35'50.303865"E
7	18°58'30.294853"N	79°35'48.650279"E
8	18°58'35.395411"N	79°35'40.955639"E
9	18°58'37.228432"N	79°35'40.947606"E
10	18°58'38.840355"N	79°35'40.947396"E
11	18°58'42.046513"N	79°35'40.948164"E
12	18°58'57.03012"N	79°35'37.815304"E
13	18°59'0.197074"N	79°35'38.718816"E
14	18°59'2.159514"N	79°35'39.656311"E
15	18°59'6.192854"N	79°35'34.262711"E
16	18°59'14.27719"N	79°35'28.85868"E
17	18°59'22.210035"N	79°35'21.49735"E
18	18°59'35.901279"N	79°35'11.732589"E
19	18°59'31.445983"N	79°34'57.959308"E
20	18°59'12.865842"N	79°35'1.678035"E
21	18°59'2.467211"N	79°34'56.089746"E
22	18°59'1.109702"N	79°34'47.709649"E
23	18°58'58.2714"N	79°34'44.663064"E
24	18°58'58.512522"N	79°34'44.433348"E
25	18°58'58.142646"N	79°34'44.229628"E
26	18°59'28.006059"N	79°34'15.868255"E
27	18°59'57.11259"N	79°33'48.139024"E
28	19°0'25.19213"N	79°33'28.157371"E
29	19°0'44.061551"N	79°33'15.057782"E
30	19°1'17.396696"N	79°32'54.638533"E
31	19°1'2.692002"N	79°32'32.748356"E
32	19°0'54.684448"N	79°32'19.742685"E
33	19°0'49.914947"N	79°32'22.945096"E
34	19°0'41.456989"N	79°32'27.840126"E
35	19°0'17.708872"N	79°32'40.035651"E
36	18°59'59.017576"N	79°32'54.384522"E
37	18°59'46.454087"N	79°32'59.327046"E
38	18°59'38.999131"N	79°33'0.84646"E
39	18°59'30.044125"N	79°33'1.405825"E
40	18°59'15.59699"N	79°33'1.77036"E
41	18°59'10.00922"N	79°33'5.895269"E
42	18°59'1.690868"N	79°33'12.80016"E
43	18°58'53.353673"N	79°33'23.230054"E
44	18°58'38.415204"N	79°33'39.138221"E
45	18°58'31.77347"N	79°33'48.146245"E
46	18°58'23.238036"N	79°33'56.541169"E
47	18°58'11.434496"N	79°34'10.616212"E

Provisional Cardinal Points for Shravanapalli Block

48	18°57'42.843482"N	79°34'41.254392"E
49	18°57'37.169192"N	79°34'49.132261"E
50	18°57'20.344831"N	79°35'6.986793"E
51	18°57'10.770094"N	79°35'34.739017"E
52	18°57'2.168252"N	79°35'59.279544"E
53	18°57'1.457639"N	79°35'59.671003"E
54	18°56'59.04557"N	79°36'7.406873"E
55	18°56'58.515823"N	79°36'11.87448"E
56	18°56'58.397205"N	79°36'15.81974"E
57	18°56'58.953293"N	79°36'18.078308"E
58	18°56'59.422455"N	79°36'28.928672"E
59	18°56'59.29595"N	79°36'37.795865"E
60	18°56'59.912032"N	79°36'40.000651"E

Bounding envelope Points		
1	19°1'17.12"	79°32'19.55"
2	19°1'19.11"	79°36'37.85"
3	18°56'58.58"	79°36'40.01"
4	18°56'56.59"	79°32'21.82"

Note: . DGPS survey is required to ascertain the exact location of the points.