

SEREGARHA COAL BLOCK SUMMARY

PART A

Sl. No.	Features	Details
1.	Location	
	Coal Block	Seregarha
	Latitude	23° 48' 31" - 23° 49' 36" N (Provisional)
	Longitude	84° 51' 54" - 84° 54' 11" E (Provisional)
	Topo Sheet No.	73 A/13 & 73 E/1
	Coalfield	North Karanpura
	Villages	Akhatia, Kalimati, Chamartoli (As per SOI toposheet)
	Tehsil/Taluka	Balumath
	District	Latehar
State	Jharkhand	
2.	Connectivity with Block	
	Nearest Rail Head	The nearest railhead from Seregarha block is Tori at a distance of 22 km on Dehri-on-Sone loop line.
	Road	The Seregarha block is approachable by a fair weather tar road from Balumath town at about 7 km. The Balumath town in turn connected to Ranchi 90 km via Tori, to Chatra 42 km. via Bagra Mora and also to Hazaribagh 80 km. via Tandwa and Barkagaon village.
	Airport	Ranchi
3.	Area	
	Geological Block Area	3.7 sq.km. (As per shape file; Refer Note 3)
	Forest Area	Approx. 40% (As per FSI plan)
	Non-Forest Area	Approx. 60%
4.	Climate and Topography	
	Average Annual Rainfall	1200 mm-1400 mm
	Temperature (Min. — Max.)	1°C-45°C
	Local Surface Drainage Channels	The drainage of the block is controlled by the three major nalas viz Bhutahi, Barwapani and Sukhdeo flowing almost north to south along western and eastern block boundaries whereas Sukhdeo nala flows along NW-SE direction on the south western plank of boundary.
	Rivers	Garhi River, largest tributary of Damodar river within this coalfield.
5.	Exploration	
	Status	Explored in Detail
	Exploration Agency	CMPDI + Naresh Kumar & Co. Pvt. Ltd. For Seregarha Mines Limited
	Total Number of Boreholes with meterage	41 Boreholes; 7667.70 m
	Borehole Density	Approx. 11 Boreholes/sq.km.

	General Dip of Seams	Dipping due south with 7° dip on an average with a slight variation in eastern part.				
	General Strike Direction	Strike N20°E-S20°W with minor variation.				
6.	Coal Seams & Reserve					
	Number of Coal Seams	Thickness Range (m)	Depth Range (m)	Geological Reserve (MT)		Grade
				Proved	Indicated	
	V	0.96-30.33	24.17 – 328.27	33.065	14.177	G-UNGR
	V Top	1.06-24.06	25.84 – 388.91	18.159	0.615	D-UNGR
	V Bot	1.20-17.39	30.52 – 405.12	13.792	0.079	G-UNGR
	IV B	1.60				
	IVA	0.12-2.59				
	IV	0.31-10.53	21.50 – 417.23	4.282	0.467	F-UNGR
	III	1.02-23.16	163.84 – 432.61	9.190	4.818	F-UNGR
	II & III Comb	6.92-34.29	11.00 – 331.01	36.667	2.366	F-G
	II	0.40-14.31	223.07 – 455.63	13.405	2.198	F-G
	I Top	0.71-6.11	24.50 – 460.31	3.954		F-G
	I Middle	1.54-4.53	27.10 – 446.50	4.118	1.421	F-G
	I Bottom	1.15-5.57	31.83 – 119.46	11.070	2.807	F-G
	I TMB COMB	1.29-9.39	246.99 – 395.98	10.637		F-G
	Total			158.341	28.949	
	Grand Total			187.290		
7.	Surface Constraints	NA				
8.	Grade of coal	G13 (Provisional) based on weighted average grade as per data available in GR.				
9.	Decision Support System (DSS) Analysis	Not-inviolate				
10.	Eco Sensitive Zone (ESZ)	Approx. 25 km from the boundary of tiger corridor connecting Palamu and Lawalong. Located 21 km from the boundary of ESZ of Lawalong and 42 km from the boundary of ESZ of Palamu.				

PART B

Sl. No.	Features	Details
1.	Previous Allocation	
	Name and Address of Allocatee	Arcelor Mittal India Ltd., GVK Power (Govindwal Sahib) Ltd.
2.	Mine Capacity as per Mining Plan	4 Mty
3.	Status of Clearances/Approvals	
	Mining Plan/ Mine Closure Plan	Not approved
	Forest Clearance	Not available
	Environmental Clearance	Not available
	Mining Lease	Not granted
	Land Acquisition	Nil
4.	No. of PAFs	194 as per Mining Plan

Note:

- The above data is compiled from Geological Report, Mining Plan and the data furnished by the prior allottee in Annexure-I/II, as available. For clarifications with regard to above data, please refer aforesaid source documents.

2. The boundary of the block has been taken from GR after conversion to WGS84 system by feature matching. The block boundary is provisional and the cardinal points, bounding coordinates are approximate.
3. There is a difference in area in the shape file and GR. Area in the shape file is based on feature mapped plan of the block as given in the GR. So, the area is tentative and field DGPS survey is required to ascertain the exact area.

Disclaimer:

1. The analysis is done on Beta-version (Trial Version) of Decision Support System (DSS) of FSI/MOEF.
2. The Decision Rules for various parameters of this DSS System are controlled by FSI.
3. CMPDI only runs this DSS to obtain the status of any block based on these Decision Rules.
4. The database of the Decision Rules is updated by FSI from time to time.
5. CMPDI does not own any responsibility for variation in the results which are based on the decision Rules of the FSI DSS in case of any updation of the database at FSI end.
6. ESZ analysis and tiger habitat/ corridor given here is based on the information available in public domain. Bidders are encouraged to verify this information and any other information additionally available.

23°48'30"N

23°49'0"N

23°49'30"N

23°50'0"N

84°52'0"E

84°52'30"E

84°53'0"E

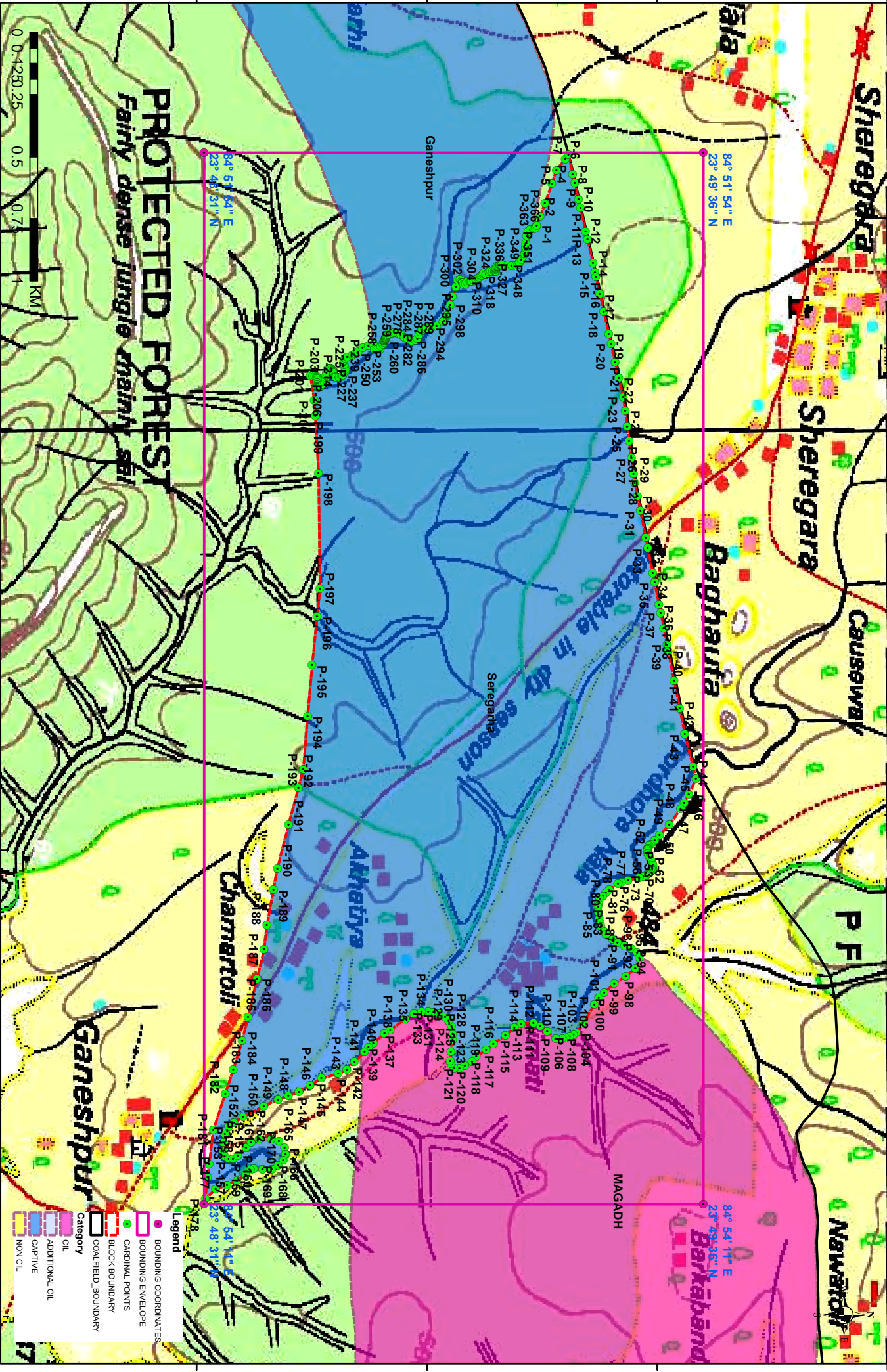
84°53'30"E

84°54'0"E

84°54'30"E

Seregarha Block, North Karanpura Coalfield

FOR INTERNAL/RESTRICTED USE ONLY



NOTE: Coordinates are provisional in WGS84 System

Legend

- BOUNDING COORDINATES
- BOUNDING ENVELOPE
- CARDINAL POINTS
- BLOCK BOUNDARY
- COALFIELD BOUNDARY
- CIL
- ADDITIONAL CIL
- CAPTIVE
- NON CIL

Provisional Cardinal Points for Seregarha Block

POINT NO	Longitude (WGS84)	Latitude (WGS84)
P-1	84° 52' 3.484" E	23° 49' 14.326" N
P-2	84° 52' 2.305" E	23° 49' 14.771" N
P-3	84° 52' 0.626" E	23° 49' 15.375" N
P-4	84° 51' 58.049" E	23° 49' 16.286" N
P-5	84° 51' 56.288" E	23° 49' 16.879" N
P-6	84° 51' 54.822" E	23° 49' 18.037" N
P-7	84° 51' 54.263" E	23° 49' 18.465" N
P-8	84° 51' 56.819" E	23° 49' 19.003" N
P-9	84° 51' 57.967" E	23° 49' 19.270" N
P-10	84° 52' 0.088" E	23° 49' 19.764" N
P-11	84° 52' 1.188" E	23° 49' 20.004" N
P-12	84° 52' 4.217" E	23° 49' 20.675" N
P-13	84° 52' 5.303" E	23° 49' 20.929" N
P-14	84° 52' 8.418" E	23° 49' 21.635" N
P-15	84° 52' 9.559" E	23° 49' 21.888" N
P-16	84° 52' 10.182" E	23° 49' 22.032" N
P-17	84° 52' 12.410" E	23° 49' 22.532" N
P-18	84° 52' 14.722" E	23° 49' 23.053" N
P-19	84° 52' 17.566" E	23° 49' 23.687" N
P-20	84° 52' 18.889" E	23° 49' 24.002" N
P-21	84° 52' 21.243" E	23° 49' 24.527" N
P-22	84° 52' 23.343" E	23° 49' 25.016" N
P-23	84° 52' 25.827" E	23° 49' 25.589" N
P-24	84° 52' 27.609" E	23° 49' 25.849" N
P-25	84° 52' 29.627" E	23° 49' 26.099" N
P-26	84° 52' 31.584" E	23° 49' 26.370" N
P-27	84° 52' 33.811" E	23° 49' 26.647" N
P-28	84° 52' 35.860" E	23° 49' 26.922" N
P-29	84° 52' 37.018" E	23° 49' 27.083" N
P-30	84° 52' 38.721" E	23° 49' 27.439" N
P-31	84° 52' 40.664" E	23° 49' 27.816" N
P-32	84° 52' 44.142" E	23° 49' 28.511" N
P-33	84° 52' 45.512" E	23° 49' 28.786" N
P-34	84° 52' 48.743" E	23° 49' 29.430" N
P-35	84° 52' 49.970" E	23° 49' 29.666" N
P-36	84° 52' 52.869" E	23° 49' 30.242" N
P-37	84° 52' 53.934" E	23° 49' 30.468" N
P-38	84° 52' 55.932" E	23° 49' 30.865" N
P-39	84° 52' 58.067" E	23° 49' 31.277" N
P-40	84° 52' 58.927" E	23° 49' 31.441" N
P-41	84° 53' 2.783" E	23° 49' 32.196" N
P-42	84° 53' 6.372" E	23° 49' 32.932" N
P-43	84° 53' 9.730" E	23° 49' 33.588" N
P-44	84° 53' 13.975" E	23° 49' 34.671" N
P-45	84° 53' 15.525" E	23° 49' 35.065" N
P-46	84° 53' 17.615" E	23° 49' 34.119" N
P-47	84° 53' 18.686" E	23° 49' 33.515" N
P-48	84° 53' 19.513" E	23° 49' 33.048" N
P-49	84° 53' 21.504" E	23° 49' 31.570" N

Provisional Cardinal Points for Seregarha Block

POINT NO	Longitude (WGS84)	Latitude (WGS84)
P-50	84° 53' 22.931" E	23° 49' 30.311" N
P-51	84° 53' 23.577" E	23° 49' 29.690" N
P-52	84° 53' 24.087" E	23° 49' 29.172" N
P-53	84° 53' 24.305" E	23° 49' 28.941" N
P-54	84° 53' 24.442" E	23° 49' 28.842" N
P-55	84° 53' 24.584" E	23° 49' 28.799" N
P-56	84° 53' 24.678" E	23° 49' 28.774" N
P-57	84° 53' 24.802" E	23° 49' 28.748" N
P-58	84° 53' 24.935" E	23° 49' 28.731" N
P-59	84° 53' 25.179" E	23° 49' 28.761" N
P-60	84° 53' 25.286" E	23° 49' 28.769" N
P-61	84° 53' 25.500" E	23° 49' 28.885" N
P-62	84° 53' 25.796" E	23° 49' 29.043" N
P-63	84° 53' 26.297" E	23° 49' 29.296" N
P-64	84° 53' 26.661" E	23° 49' 29.395" N
P-65	84° 53' 26.862" E	23° 49' 29.459" N
P-66	84° 53' 27.303" E	23° 49' 29.459" N
P-67	84° 53' 27.436" E	23° 49' 29.369" N
P-68	84° 53' 27.505" E	23° 49' 29.292" N
P-69	84° 53' 27.642" E	23° 49' 29.180" N
P-70	84° 53' 27.869" E	23° 49' 29.005" N
P-71	84° 53' 27.989" E	23° 49' 28.906" N
P-72	84° 53' 28.070" E	23° 49' 28.765" N
P-73	84° 53' 28.139" E	23° 49' 28.555" N
P-74	84° 53' 28.310" E	23° 49' 28.212" N
P-75	84° 53' 28.447" E	23° 49' 27.660" N
P-76	84° 53' 28.798" E	23° 49' 26.217" N
P-77	84° 53' 29.038" E	23° 49' 25.351" N
P-78	84° 53' 29.274" E	23° 49' 24.902" N
P-79	84° 53' 29.998" E	23° 49' 23.754" N
P-80	84° 53' 30.409" E	23° 49' 23.338" N
P-81	84° 53' 30.837" E	23° 49' 22.936" N
P-82	84° 53' 31.227" E	23° 49' 22.529" N
P-83	84° 53' 31.921" E	23° 49' 22.332" N
P-84	84° 53' 32.203" E	23° 49' 22.293" N
P-85	84° 53' 32.914" E	23° 49' 22.340" N
P-86	84° 53' 33.784" E	23° 49' 22.452" N
P-87	84° 53' 34.358" E	23° 49' 22.593" N
P-88	84° 53' 34.773" E	23° 49' 22.662" N
P-89	84° 53' 35.493" E	23° 49' 23.120" N
P-90	84° 53' 35.848" E	23° 49' 23.360" N
P-91	84° 53' 36.478" E	23° 49' 24.208" N
P-92	84° 53' 36.949" E	23° 49' 24.850" N
P-93	84° 53' 37.364" E	23° 49' 25.741" N
P-94	84° 53' 37.724" E	23° 49' 26.641" N
P-95	84° 53' 38.170" E	23° 49' 27.412" N
P-96	84° 53' 38.881" E	23° 49' 27.660" N
P-97	84° 53' 40.255" E	23° 49' 27.155" N
P-98	84° 53' 41.258" E	23° 49' 25.930" N

Provisional Cardinal Points for Seregarha Block

POINT NO	Longitude (WGS84)	Latitude (WGS84)
P-99	84° 53' 42.247" E	23° 49' 24.401" N
P-100	84° 53' 43.446" E	23° 49' 23.094" N
P-101	84° 53' 44.132" E	23° 49' 22.375" N
P-102	84° 53' 44.992" E	23° 49' 21.814" N
P-103	84° 53' 47.391" E	23° 49' 20.327" N
P-104	84° 53' 48.684" E	23° 49' 19.454" N
P-105	84° 53' 48.946" E	23° 49' 19.120" N
P-106	84° 53' 49.190" E	23° 49' 18.589" N
P-107	84° 53' 49.323" E	23° 49' 18.100" N
P-108	84° 53' 49.417" E	23° 49' 17.582" N
P-109	84° 53' 49.408" E	23° 49' 16.802" N
P-110	84° 53' 48.500" E	23° 49' 15.689" N
P-111	84° 53' 47.806" E	23° 49' 14.781" N
P-112	84° 53' 47.395" E	23° 49' 13.886" N
P-113	84° 53' 47.417" E	23° 49' 12.310" N
P-114	84° 53' 47.991" E	23° 49' 11.406" N
P-115	84° 53' 48.958" E	23° 49' 10.258" N
P-116	84° 53' 50.119" E	23° 49' 8.652" N
P-117	84° 53' 50.894" E	23° 49' 7.740" N
P-118	84° 53' 51.768" E	23° 49' 6.433" N
P-119	84° 53' 52.398" E	23° 49' 5.911" N
P-120	84° 53' 52.950" E	23° 49' 4.956" N
P-121	84° 53' 53.280" E	23° 49' 4.249" N
P-122	84° 53' 53.237" E	23° 49' 3.542" N
P-123	84° 53' 52.663" E	23° 49' 3.144" N
P-124	84° 53' 52.308" E	23° 49' 3.054" N
P-125	84° 53' 51.104" E	23° 49' 3.135" N
P-126	84° 53' 49.614" E	23° 49' 3.367" N
P-127	84° 53' 48.843" E	23° 49' 3.379" N
P-128	84° 53' 47.832" E	23° 49' 3.225" N
P-129	84° 53' 47.117" E	23° 49' 2.848" N
P-130	84° 53' 46.599" E	23° 49' 2.412" N
P-131	84° 53' 46.213" E	23° 49' 1.593" N
P-132	84° 53' 46.016" E	23° 49' 0.857" N
P-133	84° 53' 45.918" E	23° 49' 0.201" N
P-134	84° 53' 45.888" E	23° 48' 59.298" N
P-135	84° 53' 46.140" E	23° 48' 58.326" N
P-136	84° 53' 46.860" E	23° 48' 57.199" N
P-137	84° 53' 48.282" E	23° 48' 55.220" N
P-138	84° 53' 48.753" E	23° 48' 54.501" N
P-139	84° 53' 49.986" E	23° 48' 53.036" N
P-140	84° 53' 50.522" E	23° 48' 52.411" N
P-141	84° 53' 51.173" E	23° 48' 51.892" N
P-142	84° 53' 52.419" E	23° 48' 50.582" N
P-143	84° 53' 53.447" E	23° 48' 49.580" N
P-144	84° 53' 53.982" E	23° 48' 48.462" N
P-145	84° 53' 54.591" E	23° 48' 46.282" N
P-146	84° 53' 55.499" E	23° 48' 44.808" N
P-147	84° 53' 56.342" E	23° 48' 43.339" N

Provisional Cardinal Points for Seregarha Block

POINT NO	Longitude (WGS84)	Latitude (WGS84)
P-148	84° 53' 56.861" E	23° 48' 41.964" N
P-149	84° 53' 57.340" E	23° 48' 40.628" N
P-150	84° 53' 58.201" E	23° 48' 38.769" N
P-151	84° 53' 59.615" E	23° 48' 36.067" N
P-152	84° 54' 0.368" E	23° 48' 34.884" N
P-153	84° 54' 0.895" E	23° 48' 34.203" N
P-154	84° 54' 1.838" E	23° 48' 33.694" N
P-155	84° 54' 2.913" E	23° 48' 33.488" N
P-156	84° 54' 4.043" E	23° 48' 33.501" N
P-157	84° 54' 4.746" E	23° 48' 33.672" N
P-158	84° 54' 5.058" E	23° 48' 34.208" N
P-159	84° 54' 5.050" E	23° 48' 34.752" N
P-160	84° 54' 4.604" E	23° 48' 35.386" N
P-161	84° 54' 3.602" E	23° 48' 36.461" N
P-162	84° 54' 2.960" E	23° 48' 37.120" N
P-163	84° 54' 2.480" E	23° 48' 38.135" N
P-164	84° 54' 2.493" E	23° 48' 39.754" N
P-165	84° 54' 2.758" E	23° 48' 40.739" N
P-166	84° 54' 3.666" E	23° 48' 41.485" N
P-167	84° 54' 4.489" E	23° 48' 41.587" N
P-168	84° 54' 5.247" E	23° 48' 41.318" N
P-169	84° 54' 5.945" E	23° 48' 40.637" N
P-170	84° 54' 6.446" E	23° 48' 39.806" N
P-171	84° 54' 6.459" E	23° 48' 38.598" N
P-172	84° 54' 6.369" E	23° 48' 37.446" N
P-173	84° 54' 6.519" E	23° 48' 37.022" N
P-174	84° 54' 7.161" E	23° 48' 36.422" N
P-175	84° 54' 7.902" E	23° 48' 35.249" N
P-176	84° 54' 8.476" E	23° 48' 33.972" N
P-177	84° 54' 9.050" E	23° 48' 32.507" N
P-178	84° 54' 10.295" E	23° 48' 31.126" N
P-179	84° 54' 7.463" E	23° 48' 31.460" N
P-180	84° 54' 5.782" E	23° 48' 31.651" N
P-181	84° 54' 1.326" E	23° 48' 32.190" N
P-182	84° 53' 56.612" E	23° 48' 33.738" N
P-183	84° 53' 53.451" E	23° 48' 34.779" N
P-184	84° 53' 49.660" E	23° 48' 35.948" N
P-185	84° 53' 46.564" E	23° 48' 36.732" N
P-186	84° 53' 41.604" E	23° 48' 37.863" N
P-187	84° 53' 37.814" E	23° 48' 38.801" N
P-188	84° 53' 34.640" E	23° 48' 39.174" N
P-189	84° 53' 30.014" E	23° 48' 40.009" N
P-190	84° 53' 27.265" E	23° 48' 40.536" N
P-191	84° 53' 21.508" E	23° 48' 42.013" N
P-192	84° 53' 16.728" E	23° 48' 43.272" N
P-193	84° 53' 14.377" E	23° 48' 43.902" N
P-194	84° 53' 7.400" E	23° 48' 44.480" N
P-195	84° 53' 0.783" E	23° 48' 45.058" N
P-196	84° 52' 54.448" E	23° 48' 45.714" N

Provisional Cardinal Points for Seregarha Block

POINT NO	Longitude (WGS84)	Latitude (WGS84)
P-197	84° 52' 50.850" E	23° 48' 46.073" N
P-198	84° 52' 35.778" E	23° 48' 45.894" N
P-199	84° 52' 28.300" E	23° 48' 45.470" N
P-200	84° 52' 26.257" E	23° 48' 45.341" N
P-201	84° 52' 23.097" E	23° 48' 44.828" N
P-202	84° 52' 23.100" E	23° 48' 45.140" N
P-203	84° 52' 23.110" E	23° 48' 45.448" N
P-204	84° 52' 23.155" E	23° 48' 45.661" N
P-205	84° 52' 23.264" E	23° 48' 45.729" N
P-206	84° 52' 23.415" E	23° 48' 45.767" N
P-207	84° 52' 23.617" E	23° 48' 45.763" N
P-208	84° 52' 23.953" E	23° 48' 45.712" N
P-209	84° 52' 24.176" E	23° 48' 45.671" N
P-210	84° 52' 24.327" E	23° 48' 45.667" N
P-211	84° 52' 24.464" E	23° 48' 45.688" N
P-212	84° 52' 24.532" E	23° 48' 45.736" N
P-213	84° 52' 24.556" E	23° 48' 45.770" N
P-214	84° 52' 24.563" E	23° 48' 45.859" N
P-215	84° 52' 24.560" E	23° 48' 45.962" N
P-216	84° 52' 24.512" E	23° 48' 46.065" N
P-217	84° 52' 24.423" E	23° 48' 46.147" N
P-218	84° 52' 24.200" E	23° 48' 46.380" N
P-219	84° 52' 23.820" E	23° 48' 46.637" N
P-220	84° 52' 23.532" E	23° 48' 46.778" N
P-221	84° 52' 23.285" E	23° 48' 46.815" N
P-222	84° 52' 22.977" E	23° 48' 46.860" N
P-223	84° 52' 22.655" E	23° 48' 46.932" N
P-224	84° 52' 22.069" E	23° 48' 47.298" N
P-225	84° 52' 22.034" E	23° 48' 47.374" N
P-226	84° 52' 22.052" E	23° 48' 47.504" N
P-227	84° 52' 22.206" E	23° 48' 47.627" N
P-228	84° 52' 22.425" E	23° 48' 47.758" N
P-229	84° 52' 22.528" E	23° 48' 47.806" N
P-230	84° 52' 22.675" E	23° 48' 47.843" N
P-231	84° 52' 22.843" E	23° 48' 47.895" N
P-232	84° 52' 23.066" E	23° 48' 48.015" N
P-233	84° 52' 23.199" E	23° 48' 48.114" N
P-234	84° 52' 23.234" E	23° 48' 48.176" N
P-235	84° 52' 23.275" E	23° 48' 48.590" N
P-236	84° 52' 23.148" E	23° 48' 48.875" N
P-237	84° 52' 23.025" E	23° 48' 49.039" N
P-238	84° 52' 22.661" E	23° 48' 49.293" N
P-239	84° 52' 22.528" E	23° 48' 49.361" N
P-240	84° 52' 22.247" E	23° 48' 49.392" N
P-241	84° 52' 21.935" E	23° 48' 49.320" N
P-242	84° 52' 21.661" E	23° 48' 49.251" N
P-243	84° 52' 21.236" E	23° 48' 49.204" N
P-244	84° 52' 21.048" E	23° 48' 49.227" N
P-245	84° 52' 20.797" E	23° 48' 49.358" N

Provisional Cardinal Points for Seregarha Block

POINT NO	Longitude (WGS84)	Latitude (WGS84)
P-246	84° 52' 20.630" E	23° 48' 49.639" N
P-247	84° 52' 20.359" E	23° 48' 50.307" N
P-248	84° 52' 20.160" E	23° 48' 50.687" N
P-249	84° 52' 19.889" E	23° 48' 51.081" N
P-250	84° 52' 19.454" E	23° 48' 51.633" N
P-251	84° 52' 19.143" E	23° 48' 52.383" N
P-252	84° 52' 18.964" E	23° 48' 52.993" N
P-253	84° 52' 18.958" E	23° 48' 53.072" N
P-254	84° 52' 19.678" E	23° 48' 53.178" N
P-255	84° 52' 19.688" E	23° 48' 53.532" N
P-256	84° 52' 19.538" E	23° 48' 53.949" N
P-257	84° 52' 19.281" E	23° 48' 54.024" N
P-258	84° 52' 19.003" E	23° 48' 54.281" N
P-259	84° 52' 18.746" E	23° 48' 54.375" N
P-260	84° 52' 18.585" E	23° 48' 54.433" N
P-261	84° 52' 18.557" E	23° 48' 54.443" N
P-262	84° 52' 18.524" E	23° 48' 54.456" N
P-263	84° 52' 18.480" E	23° 48' 54.476" N
P-264	84° 52' 18.442" E	23° 48' 54.493" N
P-265	84° 52' 18.389" E	23° 48' 54.516" N
P-266	84° 52' 18.343" E	23° 48' 54.537" N
P-267	84° 52' 18.308" E	23° 48' 54.552" N
P-268	84° 52' 18.196" E	23° 48' 54.602" N
P-269	84° 52' 18.164" E	23° 48' 54.616" N
P-270	84° 52' 18.146" E	23° 48' 54.624" N
P-271	84° 52' 18.128" E	23° 48' 54.634" N
P-272	84° 52' 18.103" E	23° 48' 54.649" N
P-273	84° 52' 18.083" E	23° 48' 54.660" N
P-274	84° 52' 17.995" E	23° 48' 54.710" N
P-275	84° 52' 17.936" E	23° 48' 54.743" N
P-276	84° 52' 17.898" E	23° 48' 54.765" N
P-277	84° 52' 17.825" E	23° 48' 54.806" N
P-278	84° 52' 17.732" E	23° 48' 54.895" N
P-279	84° 52' 17.600" E	23° 48' 55.020" N
P-280	84° 52' 17.486" E	23° 48' 55.541" N
P-281	84° 52' 17.429" E	23° 48' 55.791" N
P-282	84° 52' 17.536" E	23° 48' 56.230" N
P-283	84° 52' 17.718" E	23° 48' 56.605" N
P-284	84° 52' 18.082" E	23° 48' 57.055" N
P-285	84° 52' 18.371" E	23° 48' 57.536" N
P-286	84° 52' 18.543" E	23° 48' 58.072" N
P-287	84° 52' 18.489" E	23° 48' 58.511" N
P-288	84° 52' 18.200" E	23° 48' 58.768" N
P-289	84° 52' 17.718" E	23° 48' 58.993" N
P-290	84° 52' 17.397" E	23° 48' 59.121" N
P-291	84° 52' 17.129" E	23° 48' 59.357" N
P-292	84° 52' 16.958" E	23° 48' 59.667" N
P-293	84° 52' 16.862" E	23° 49' 0.010" N
P-294	84° 52' 16.797" E	23° 49' 0.470" N

Provisional Cardinal Points for Seregarha Block

POINT NO	Longitude (WGS84)	Latitude (WGS84)
P-295	84° 52' 16.540" E	23° 49' 1.284" N
P-296	84° 52' 15.941" E	23° 49' 2.087" N
P-297	84° 52' 15.180" E	23° 49' 2.612" N
P-298	84° 52' 13.831" E	23° 49' 3.051" N
P-299	84° 52' 12.765" E	23° 49' 3.344" N
P-300	84° 52' 11.500" E	23° 49' 3.760" N
P-301	84° 52' 11.442" E	23° 49' 3.780" N
P-302	84° 52' 10.621" E	23° 49' 4.051" N
P-303	84° 52' 10.476" E	23° 49' 4.325" N
P-304	84° 52' 10.655" E	23° 49' 4.582" N
P-305	84° 52' 10.895" E	23° 49' 4.633" N
P-306	84° 52' 10.941" E	23° 49' 4.660" N
P-307	84° 52' 10.966" E	23° 49' 4.674" N
P-308	84° 52' 11.161" E	23° 49' 4.788" N
P-309	84° 52' 11.075" E	23° 49' 5.070" N
P-310	84° 52' 10.818" E	23° 49' 5.242" N
P-311	84° 52' 10.776" E	23° 49' 5.573" N
P-312	84° 52' 10.758" E	23° 49' 5.713" N
P-313	84° 52' 10.726" E	23° 49' 5.851" N
P-314	84° 52' 10.655" E	23° 49' 6.158" N
P-315	84° 52' 10.504" E	23° 49' 6.428" N
P-316	84° 52' 10.373" E	23° 49' 6.664" N
P-317	84° 52' 10.240" E	23° 49' 6.799" N
P-318	84° 52' 10.047" E	23° 49' 6.996" N
P-319	84° 52' 9.962" E	23° 49' 7.083" N
P-320	84° 52' 9.786" E	23° 49' 7.302" N
P-321	84° 52' 9.687" E	23° 49' 7.426" N
P-322	84° 52' 9.893" E	23° 49' 7.700" N
P-323	84° 52' 9.871" E	23° 49' 7.722" N
P-324	84° 52' 9.857" E	23° 49' 7.737" N
P-325	84° 52' 9.508" E	23° 49' 8.094" N
P-326	84° 52' 9.422" E	23° 49' 8.300" N
P-327	84° 52' 9.473" E	23° 49' 8.557" N
P-328	84° 52' 9.463" E	23° 49' 8.810" N
P-329	84° 52' 9.462" E	23° 49' 8.843" N
P-330	84° 52' 9.456" E	23° 49' 8.993" N
P-331	84° 52' 9.379" E	23° 49' 8.993" N
P-332	84° 52' 9.199" E	23° 49' 8.981" N
P-333	84° 52' 9.165" E	23° 49' 8.978" N
P-334	84° 52' 9.019" E	23° 49' 8.968" N
P-335	84° 52' 9.012" E	23° 49' 8.974" N
P-336	84° 52' 8.876" E	23° 49' 9.087" N
P-337	84° 52' 8.814" E	23° 49' 9.139" N
P-338	84° 52' 8.812" E	23° 49' 9.142" N
P-339	84° 52' 8.807" E	23° 49' 9.155" N
P-340	84° 52' 8.754" E	23° 49' 9.281" N
P-341	84° 52' 8.692" E	23° 49' 9.426" N
P-342	84° 52' 8.657" E	23° 49' 9.510" N
P-343	84° 52' 8.651" E	23° 49' 9.525" N

Provisional Cardinal Points for Seregarha Block

POINT NO	Longitude (WGS84)	Latitude (WGS84)
P-344	84° 52' 8.616" E	23° 49' 9.643" N
P-345	84° 52' 8.600" E	23° 49' 9.695" N
P-346	84° 52' 8.576" E	23° 49' 9.776" N
P-347	84° 52' 8.574" E	23° 49' 9.782" N
P-348	84° 52' 8.574" E	23° 49' 10.587" N
P-349	84° 52' 8.677" E	23° 49' 11.032" N
P-350	84° 52' 8.634" E	23° 49' 11.649" N
P-351	84° 52' 8.548" E	23° 49' 11.855" N
P-352	84° 52' 8.318" E	23° 49' 12.034" N
P-353	84° 52' 8.301" E	23° 49' 12.047" N
P-354	84° 52' 7.966" E	23° 49' 12.309" N
P-355	84° 52' 7.383" E	23° 49' 12.668" N
P-356	84° 52' 7.191" E	23° 49' 12.733" N
P-357	84° 52' 7.131" E	23° 49' 12.753" N
P-358	84° 52' 6.775" E	23° 49' 12.874" N
P-359	84° 52' 6.398" E	23° 49' 12.908" N
P-360	84° 52' 6.199" E	23° 49' 12.900" N
P-361	84° 52' 5.790" E	23° 49' 12.882" N
P-362	84° 52' 4.856" E	23° 49' 12.994" N
P-363	84° 52' 4.291" E	23° 49' 13.199" N
P-364	84° 52' 4.000" E	23° 49' 13.465" N
P-365	84° 52' 3.905" E	23° 49' 13.970" N
P-366	84° 52' 3.802" E	23° 49' 14.151" N
P-367	84° 52' 3.484" E	23° 49' 14.326" N