

REONTI COAL BLOCK SUMMARY

PART A

Sr. No	Features	Details
1.	Location	
	Coal Block	REONTI
	Latitude	23°37'58" - 23°39'48" N (Provisional)
	Longitude	83°09'35" - 83°13'50" E (Provisional)
	Topo Sheet No.	64 M/2
	Coalfield	Tatapani-Ramkola
	Villages	Rewati, Amdiha, Barti Kalan, Chachidand, Dhodha, Rampur, Dandkarwan, Parasdiha
	Tehsil/Taluka	Wadrafnagar, Pratappur
	District	Surajpur, Balrampur
	State	Chhattisgarh
2.	Connectivity with Block	
	Nearest Rail Head	The nearest railhead is Bistrampur on Bilaspur-Anuppur section of South-Eastern Railway and is about 80km away.
	Road	The nearest important town is Wadrafnagar, to the northeast from where the area can be approached by network of fair weather forest and the other unmetalled roads. The villages within the block are well connected by fair weather unmetalled roads. Ambikapur is the district headquarters and Tehsil headquarter is at Wadrafnagar.
	Airport	
3.	Area	
	Geological Block Area	17.01 sq.km. (Includes Reonti East & West blocks), (As per shape file, Please refer Note below)
	Forest Area	Nil
	Non-Forest Area	100%
4.	Climate and Topography	
	Average Annual Rainfall	1136.10 mm
	Temperature (Min. — Max.)	6°C-49.7°C
	Local Surface Drainage Channels	The Andharwa Nala flows towards and the northerly flowing Jhoj nala flowing along the western boundary with its numerous unnamed tributaries
	Rivers	
5.	Exploration	
	Status	Partly Explored: Reonti West Part (Drilling Concluded-GR Under Preparation) Detailed Explored: Reonti East Part

	III	0.61-2.45	315.23-676.65	13.139	G2-G12
	L	0.28-1.15	325.9-689.45	5.3975	G2-G11
	II	0.95-3.1	337.71-702.25	17.5191	G1 - G12
	I	0.18-2.15	424.4-790.43	5.6473	G2 - G11
	Total			232.4727	
B. Reonti West Part (Regionally Explored-Partial Drilling for Detailed Exploration)					
	VI	0.83-2.75	622.54-729.09	19.78	D-F
	V	8.93-12.73	631.94-729.98	33.29	D-G
	IV	12.88-66.66	643.40-799.10	126.21	B-G
	III	0.29-2.05	779.58-838.02	7.61	B-C
	L	0.28-1.80	797.63-849.21	4.28	A-C
	II	0.43-5.14	819.90-880.00	9.69	A-B
	Total			246.11	
	Grand Total			478.5827	
7.	Surface Constraints	NA			
8.	Grade of the block	G10 (Provisional) based on weighted average grade as per data available in regional GR.			
9.	Decision Support System (DSS) Analysis	Hydrology Info: Andhar Nala, Andharwa Nala, Wildlife Info: Sloth Bear			
10.	Eco Sensitive Zone (ESZ) Analysis	Block is bounded by tiger corridors connecting ESZ of Tamorpingla and Semarsot in north (approx. 3 km) and south directions (approx. 6 km).			

Note:

1. The above data is compiled from Geological Report, Mining Plan and the data furnished by the prior allottee in Annexure-I/II, as available. For clarifications with regard to above data, please refer aforesaid source documents.
2. The boundary of the block has been taken from GR after conversion to WGS84 system by feature matching. The block boundary is provisional and the cardinal points, bounding co-ordinates are approximate.
3. There is a difference in area in the shape file and GR. Area in the shape file is based on feature mapped plan of the block as given in the GR. So, the area is tentative and field DGPS survey is required to ascertain the exact area.
4. Drilling for detail exploration in the western part of the block has concluded.

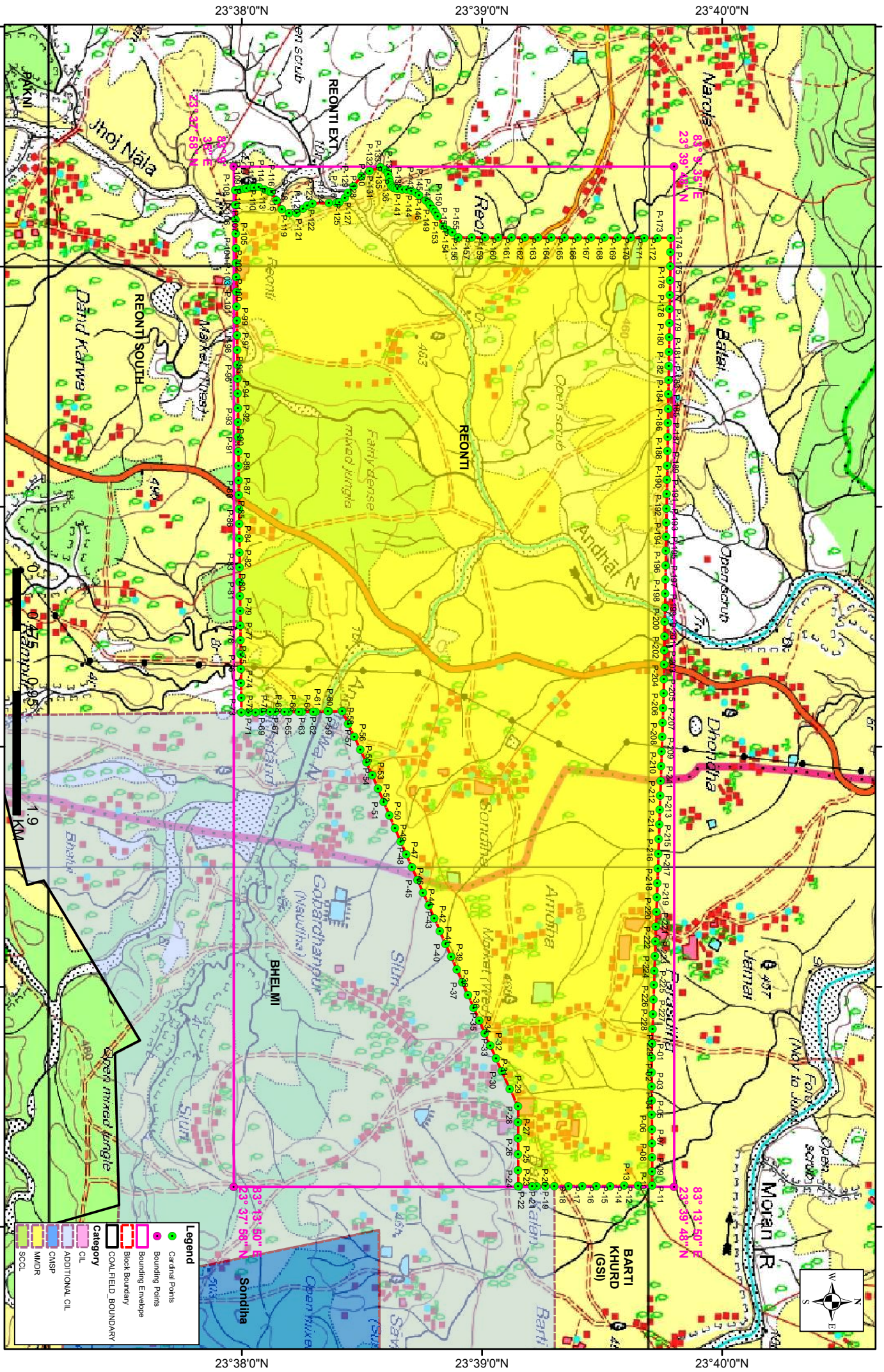
Disclaimer:

1. The analysis is done on Beta-version (Trial Version) of Decision Support System (DSS) of FSI/ MOEF.
2. The Decision Rules for various parameters of this DSS System are controlled by FSI.
3. CMPDI only runs this DSS to obtain the status of any block based on these Decision Rules.
4. The database of the Decision Rules is updated by FSI from time to time.
5. CMPDI does not own any responsibility for variation in the results which are based on the decision Rules of the FSI DSS in case of any update of the database at FSI end.

6. ESZ analysis and tiger habitat/ corridor given here is based on the information available in public domain. Bidders are encouraged to verify this information and any other information additionally available.

Reonti Block, Tatapani Ramkola Coalfield

FOR INTERNAL/RESTRICTED USE ONLY



Note: The map is prepared on WGS84 coordinate system.

Provisional Cardinal Points for REONTI Block

POINT NO	Longitude (WGS84)	Latitude (WGS84)
P-1	83° 13' 14.152" E	23° 39' 42.499" N
P-2	83° 13' 17.799" E	23° 39' 42.378" N
P-3	83° 13' 21.347" E	23° 39' 42.395" N
P-4	83° 13' 24.896" E	23° 39' 42.412" N
P-5	83° 13' 28.444" E	23° 39' 42.430" N
P-6	83° 13' 31.993" E	23° 39' 42.447" N
P-7	83° 13' 35.541" E	23° 39' 42.464" N
P-8	83° 13' 39.090" E	23° 39' 42.481" N
P-9	83° 13' 42.638" E	23° 39' 42.499" N
P-10	83° 13' 46.187" E	23° 39' 42.516" N
P-11	83° 13' 49.735" E	23° 39' 42.533" N
P-12	83° 13' 49.742" E	23° 39' 39.044" N
P-13	83° 13' 49.748" E	23° 39' 35.556" N
P-14	83° 13' 49.755" E	23° 39' 32.067" N
P-15	83° 13' 49.761" E	23° 39' 28.579" N
P-16	83° 13' 49.768" E	23° 39' 25.090" N
P-17	83° 13' 49.774" E	23° 39' 21.602" N
P-18	83° 13' 49.781" E	23° 39' 18.113" N
P-19	83° 13' 49.785" E	23° 39' 15.901" N
P-20	83° 13' 49.789" E	23° 39' 13.678" N
P-21	83° 13' 49.791" E	23° 39' 12.571" N
P-22	83° 13' 49.797" E	23° 39' 9.242" N
P-23	83° 13' 49.798" E	23° 39' 9.015" N
P-24	83° 13' 45.817" E	23° 39' 9.015" N
P-25	83° 13' 41.836" E	23° 39' 9.015" N
P-26	83° 13' 37.855" E	23° 39' 9.014" N
P-27	83° 13' 33.874" E	23° 39' 9.014" N
P-28	83° 13' 29.892" E	23° 39' 9.014" N
P-29	83° 13' 25.512" E	23° 39' 6.966" N
P-30	83° 13' 21.131" E	23° 39' 4.917" N
P-31	83° 13' 17.944" E	23° 39' 3.516" N
P-32	83° 13' 14.757" E	23° 39' 2.115" N
P-33	83° 13' 11.570" E	23° 39' 0.714" N
P-34	83° 13' 8.383" E	23° 38' 59.312" N
P-35	83° 13' 5.195" E	23° 38' 57.911" N
P-36	83° 13' 2.008" E	23° 38' 56.510" N
P-37	83° 12' 58.821" E	23° 38' 55.109" N
P-38	83° 12' 55.634" E	23° 38' 53.708" N
P-39	83° 12' 52.447" E	23° 38' 52.307" N
P-40	83° 12' 49.260" E	23° 38' 50.905" N
P-41	83° 12' 46.073" E	23° 38' 49.504" N
P-42	83° 12' 42.886" E	23° 38' 48.103" N
P-43	83° 12' 39.699" E	23° 38' 46.702" N
P-44	83° 12' 36.512" E	23° 38' 45.300" N
P-45	83° 12' 33.325" E	23° 38' 43.899" N
P-46	83° 12' 30.138" E	23° 38' 42.498" N
P-47	83° 12' 26.951" E	23° 38' 41.096" N

Provisional Cardinal Points for REONTI Block

POINT NO	Longitude (WGS84)	Latitude (WGS84)
P-48	83° 12' 23.764" E	23° 38' 39.695" N
P-49	83° 12' 20.437" E	23° 38' 38.284" N
P-50	83° 12' 17.109" E	23° 38' 36.874" N
P-51	83° 12' 13.781" E	23° 38' 35.464" N
P-52	83° 12' 10.454" E	23° 38' 34.054" N
P-53	83° 12' 7.126" E	23° 38' 32.643" N
P-54	83° 12' 3.931" E	23° 38' 31.133" N
P-55	83° 12' 0.736" E	23° 38' 29.623" N
P-56	83° 11' 57.541" E	23° 38' 28.113" N
P-57	83° 11' 54.346" E	23° 38' 26.603" N
P-58	83° 11' 51.151" E	23° 38' 25.092" N
P-59	83° 11' 51.187" E	23° 38' 21.749" N
P-60	83° 11' 51.189" E	23° 38' 21.492" N
P-61	83° 11' 51.222" E	23° 38' 18.405" N
P-62	83° 11' 51.228" E	23° 38' 17.891" N
P-63	83° 11' 51.258" E	23° 38' 15.061" N
P-64	83° 11' 51.266" E	23° 38' 14.290" N
P-65	83° 11' 51.293" E	23° 38' 11.717" N
P-66	83° 11' 51.304" E	23° 38' 10.689" N
P-67	83° 11' 51.328" E	23° 38' 8.374" N
P-68	83° 11' 51.342" E	23° 38' 7.088" N
P-69	83° 11' 51.364" E	23° 38' 5.030" N
P-70	83° 11' 51.380" E	23° 38' 3.487" N
P-71	83° 11' 51.399" E	23° 38' 1.686" N
P-72	83° 11' 51.418" E	23° 37' 59.886" N
P-73	83° 11' 47.793" E	23° 37' 59.845" N
P-74	83° 11' 44.169" E	23° 37' 59.804" N
P-75	83° 11' 40.544" E	23° 37' 59.762" N
P-76	83° 11' 36.919" E	23° 37' 59.721" N
P-77	83° 11' 33.294" E	23° 37' 59.680" N
P-78	83° 11' 29.669" E	23° 37' 59.638" N
P-79	83° 11' 26.045" E	23° 37' 59.597" N
P-80	83° 11' 22.420" E	23° 37' 59.555" N
P-81	83° 11' 18.795" E	23° 37' 59.514" N
P-82	83° 11' 15.170" E	23° 37' 59.472" N
P-83	83° 11' 11.546" E	23° 37' 59.431" N
P-84	83° 11' 7.921" E	23° 37' 59.389" N
P-85	83° 11' 4.296" E	23° 37' 59.348" N
P-86	83° 11' 0.671" E	23° 37' 59.306" N
P-87	83° 10' 57.046" E	23° 37' 59.264" N
P-88	83° 10' 53.422" E	23° 37' 59.223" N
P-89	83° 10' 49.797" E	23° 37' 59.181" N
P-90	83° 10' 46.172" E	23° 37' 59.139" N
P-91	83° 10' 42.547" E	23° 37' 59.098" N
P-92	83° 10' 38.923" E	23° 37' 59.056" N
P-93	83° 10' 35.298" E	23° 37' 59.014" N
P-94	83° 10' 31.673" E	23° 37' 58.973" N

Provisional Cardinal Points for REONTI Block

POINT NO	Longitude (WGS84)	Latitude (WGS84)
P-95	83° 10' 28.048" E	23° 37' 58.931" N
P-96	83° 10' 24.424" E	23° 37' 58.889" N
P-97	83° 10' 20.799" E	23° 37' 58.847" N
P-98	83° 10' 17.174" E	23° 37' 58.805" N
P-99	83° 10' 13.549" E	23° 37' 58.763" N
P-100	83° 10' 9.924" E	23° 37' 58.721" N
P-101	83° 10' 6.300" E	23° 37' 58.679" N
P-102	83° 10' 2.675" E	23° 37' 58.637" N
P-103	83° 9' 59.050" E	23° 37' 58.596" N
P-104	83° 9' 55.425" E	23° 37' 58.554" N
P-105	83° 9' 51.801" E	23° 37' 58.511" N
P-106	83° 9' 48.176" E	23° 37' 58.469" N
P-107	83° 9' 44.551" E	23° 37' 58.427" N
P-108	83° 9' 40.926" E	23° 37' 58.385" N
P-109	83° 9' 40.732" E	23° 37' 59.548" N
P-110	83° 9' 40.555" E	23° 38' 0.615" N
P-111	83° 9' 40.450" E	23° 38' 1.245" N
P-112	83° 9' 40.328" E	23° 38' 2.338" N
P-113	83° 9' 40.244" E	23° 38' 3.090" N
P-114	83° 9' 40.113" E	23° 38' 4.268" N
P-115	83° 9' 40.704" E	23° 38' 5.681" N
P-116	83° 9' 41.200" E	23° 38' 6.867" N
P-117	83° 9' 41.435" E	23° 38' 7.429" N
P-118	83° 9' 43.475" E	23° 38' 8.676" N
P-119	83° 9' 45.690" E	23° 38' 10.021" N
P-120	83° 9' 46.562" E	23° 38' 11.782" N
P-121	83° 9' 46.692" E	23° 38' 13.669" N
P-122	83° 9' 45.552" E	23° 38' 15.289" N
P-123	83° 9' 44.698" E	23° 38' 16.358" N
P-124	83° 9' 44.195" E	23° 38' 17.689" N
P-125	83° 9' 44.099" E	23° 38' 21.786" N
P-126	83° 9' 44.017" E	23° 38' 23.704" N
P-127	83° 9' 43.907" E	23° 38' 24.387" N
P-128	83° 9' 42.733" E	23° 38' 25.812" N
P-129	83° 9' 41.564" E	23° 38' 26.521" N
P-130	83° 9' 39.860" E	23° 38' 27.943" N
P-131	83° 9' 37.306" E	23° 38' 29.914" N
P-132	83° 9' 36.093" E	23° 38' 31.956" N
P-133	83° 9' 35.194" E	23° 38' 34.683" N
P-134	83° 9' 35.751" E	23° 38' 35.857" N
P-135	83° 9' 36.347" E	23° 38' 36.478" N
P-136	83° 9' 36.806" E	23° 38' 36.611" N
P-137	83° 9' 37.934" E	23° 38' 36.877" N
P-138	83° 9' 38.992" E	23° 38' 37.045" N
P-139	83° 9' 39.802" E	23° 38' 37.342" N
P-140	83° 9' 40.293" E	23° 38' 37.800" N
P-141	83° 9' 40.467" E	23° 38' 38.289" N

Provisional Cardinal Points for REONTI Block

POINT NO	Longitude (WGS84)	Latitude (WGS84)
P-142	83° 9' 40.499" E	23° 38' 38.842" N
P-143	83° 9' 40.667" E	23° 38' 40.078" N
P-144	83° 9' 40.766" E	23° 38' 41.185" N
P-145	83° 9' 41.077" E	23° 38' 42.357" N
P-146	83° 9' 41.493" E	23° 38' 43.530" N
P-147	83° 9' 42.159" E	23° 38' 44.314" N
P-148	83° 9' 43.384" E	23° 38' 45.979" N
P-149	83° 9' 44.262" E	23° 38' 46.797" N
P-150	83° 9' 44.754" E	23° 38' 47.125" N
P-151	83° 9' 45.703" E	23° 38' 47.878" N
P-152	83° 9' 46.547" E	23° 38' 48.403" N
P-153	83° 9' 47.391" E	23° 38' 48.960" N
P-154	83° 9' 49.748" E	23° 38' 50.273" N
P-155	83° 9' 50.729" E	23° 38' 51.449" N
P-156	83° 9' 51.499" E	23° 38' 52.592" N
P-157	83° 9' 52.655" E	23° 38' 54.094" N
P-158	83° 9' 52.698" E	23° 38' 54.126" N
P-159	83° 9' 52.704" E	23° 38' 57.442" N
P-160	83° 9' 52.710" E	23° 39' 0.758" N
P-161	83° 9' 52.715" E	23° 39' 4.073" N
P-162	83° 9' 52.721" E	23° 39' 7.389" N
P-163	83° 9' 52.727" E	23° 39' 10.705" N
P-164	83° 9' 52.732" E	23° 39' 14.020" N
P-165	83° 9' 52.738" E	23° 39' 17.336" N
P-166	83° 9' 52.744" E	23° 39' 20.652" N
P-167	83° 9' 52.750" E	23° 39' 23.967" N
P-168	83° 9' 52.755" E	23° 39' 27.283" N
P-169	83° 9' 52.761" E	23° 39' 30.599" N
P-170	83° 9' 52.767" E	23° 39' 33.914" N
P-171	83° 9' 52.772" E	23° 39' 37.230" N
P-172	83° 9' 52.778" E	23° 39' 40.546" N
P-173	83° 9' 52.784" E	23° 39' 43.861" N
P-174	83° 9' 52.790" E	23° 39' 47.177" N
P-175	83° 9' 56.347" E	23° 39' 47.121" N
P-176	83° 9' 59.904" E	23° 39' 47.066" N
P-177	83° 10' 3.461" E	23° 39' 47.011" N
P-178	83° 10' 7.018" E	23° 39' 46.955" N
P-179	83° 10' 10.576" E	23° 39' 46.900" N
P-180	83° 10' 14.133" E	23° 39' 46.844" N
P-181	83° 10' 17.690" E	23° 39' 46.789" N
P-182	83° 10' 21.247" E	23° 39' 46.733" N
P-183	83° 10' 24.804" E	23° 39' 46.678" N
P-184	83° 10' 28.361" E	23° 39' 46.622" N
P-185	83° 10' 31.919" E	23° 39' 46.567" N
P-186	83° 10' 35.476" E	23° 39' 46.511" N
P-187	83° 10' 39.033" E	23° 39' 46.455" N
P-188	83° 10' 42.590" E	23° 39' 46.400" N

Provisional Cardinal Points for REONTI Block

POINT NO	Longitude (WGS84)	Latitude (WGS84)
P-189	83° 10' 46.147" E	23° 39' 46.344" N
P-190	83° 10' 49.705" E	23° 39' 46.288" N
P-191	83° 10' 53.262" E	23° 39' 46.233" N
P-192	83° 10' 56.819" E	23° 39' 46.177" N
P-193	83° 11' 0.376" E	23° 39' 46.121" N
P-194	83° 11' 3.933" E	23° 39' 46.065" N
P-195	83° 11' 7.490" E	23° 39' 46.009" N
P-196	83° 11' 11.048" E	23° 39' 45.954" N
P-197	83° 11' 14.605" E	23° 39' 45.898" N
P-198	83° 11' 18.162" E	23° 39' 45.842" N
P-199	83° 11' 21.719" E	23° 39' 45.786" N
P-200	83° 11' 25.276" E	23° 39' 45.730" N
P-201	83° 11' 28.833" E	23° 39' 45.674" N
P-202	83° 11' 32.391" E	23° 39' 45.618" N
P-203	83° 11' 35.948" E	23° 39' 45.562" N
P-204	83° 11' 39.505" E	23° 39' 45.506" N
P-205	83° 11' 43.062" E	23° 39' 45.450" N
P-206	83° 11' 46.619" E	23° 39' 45.394" N
P-207	83° 11' 50.266" E	23° 39' 45.274" N
P-208	83° 11' 53.914" E	23° 39' 45.153" N
P-209	83° 11' 57.561" E	23° 39' 45.033" N
P-210	83° 12' 1.208" E	23° 39' 44.912" N
P-211	83° 12' 4.855" E	23° 39' 44.792" N
P-212	83° 12' 8.502" E	23° 39' 44.671" N
P-213	83° 12' 12.150" E	23° 39' 44.551" N
P-214	83° 12' 15.797" E	23° 39' 44.430" N
P-215	83° 12' 19.444" E	23° 39' 44.310" N
P-216	83° 12' 23.091" E	23° 39' 44.189" N
P-217	83° 12' 26.738" E	23° 39' 44.069" N
P-218	83° 12' 30.386" E	23° 39' 43.948" N
P-219	83° 12' 34.033" E	23° 39' 43.827" N
P-220	83° 12' 37.680" E	23° 39' 43.707" N
P-221	83° 12' 41.327" E	23° 39' 43.586" N
P-222	83° 12' 44.974" E	23° 39' 43.465" N
P-223	83° 12' 48.621" E	23° 39' 43.345" N
P-224	83° 12' 52.269" E	23° 39' 43.224" N
P-225	83° 12' 55.916" E	23° 39' 43.103" N
P-226	83° 12' 59.563" E	23° 39' 42.982" N
P-227	83° 13' 3.210" E	23° 39' 42.861" N
P-228	83° 13' 6.857" E	23° 39' 42.740" N
P-229	83° 13' 10.504" E	23° 39' 42.620" N