

RAWANWARA NORTH COAL BLOCK SUMMARY

PART A

Sr. No	Features	Details
1. Location		
	Coal Block	RAWANWARA NORTH
	Latitude	22°12'59" - 22°14'46" (Provisional)
	Longitude	78°47'06" - 78°51'07" (Provisional)
	Topo Sheet No.	SoI Topo-Sheet No.55/J16
	Coalfield	Pench-Kanhan Valley
	Villages	Deori,Rawanwada,Sirgori khurd,Newton chikli,Parasia
	Tehsil/Taluka	Parasia
	District	Chhindwara
	State	Madhya Pradesh
2. Connectivity with Block		
	Nearest Rail Head	Parasia
	Road	The area can be approached by a metal road bifurcating from the Madhya Pradesh state highway t No.19 1 km .east of Parasia town
	Airport	-
3. Area		
	Geological Block Area	16.42 sq.km. (As per shape file. Please refer Note-3 below)
	Forest Area	About 24 %(As per FSI map)
	Non-Forest Area	About 76 %(As per FSI map)
4. Climate and Topography		
	Average Annual Rainfall	The annual rainfall, most of.it precipitating during June to September by the southwest monsoons is between 120-150 cm
	Temperature (Min. — Max.)	In summer the temperature generally varies between 25-40 °C during the day time, while in winter it drops down to 8 °C during night.
	Local Surface Drainage Channels	Pench river, which perennially forms the main drainage in the area and flows mostly east-west throughout the block.
	Rivers	Pench river
5. Exploration		
	Status	Explored
	Exploration Agency	MECL, JUNE 1984

	Total Number of Boreholes with meterage	151 Boreholes;50268.60 m			
	Borehole Density	Approx. 9.2 Boreholes/sq.km.			
	General Dip of Seams	8° to 10° due N and NW			
	General Strike Direction	EW to ENE - WSW			
	Faults	35 Faults with throw ranging between 5m-150m.			
6.	Coal Seams & Reserve				
	Coal Seams	Thickness Range (m)	Depth Range (m)	Geological Reserve (MT)	Grade
	IB	0.54-2.20	156-343		A TO G
	IC	0.60-2.80	160-346		
	L1	0.55-1.55	120-443		
	II/IIA/IIIB	0.04-1.50	182-352		
	IIIA	0.03-1.49	128-453		
	IIIB	0.52-2.00	136-459		
	IVA	1.03-3.00	199-440		
	IVB	0.03-0.47	162-478		
	VA/A1/A2	1.52-4.46	199-460		
	VB	0.51-2.52	180-490		
	VC	0.11-0.42	180-497		
		Total		177.068	
7.	Surface Constraints	River and its tributaries flow through the middle of the block.			
8.	Grade of the block	G6 (Provisional) based on weighted average grade as per grade-wise data available in Salient Features of Rawanwara North Block.			
9.	Decision Support System (DSS) Analysis	Hydrology Info: Polygon touches Pench River, Sukri N, Devrani N			
10.	Eco Sensitive Zone (ESZ) Analysis	Approx. 12.2 km to the Panchmarhi Biosphere from the North-western block boundary.			

PART B

Sr. No.	Features	Details
1.	Previous Allocation	
	Name and Address of Allocatee	SKS Ispat Limited
2.	Target Capacity as per Mining Plan	NA
	Tentative Peak Rated Capacity	1.26 Mtpa
3.	Status of Clearances/Approvals	
	Mining Plan/ Mine Closure Plan	NA
	Forest Clearance	NA
	Environmental Clearance	NA
	Mining Lease	NA
	Land Acquisition	NA
	No. of PAFs as per Mining Plan/ Mine Closure Plan	NA
4.	Surface Infrastructure already built, if any.	NA

Note:

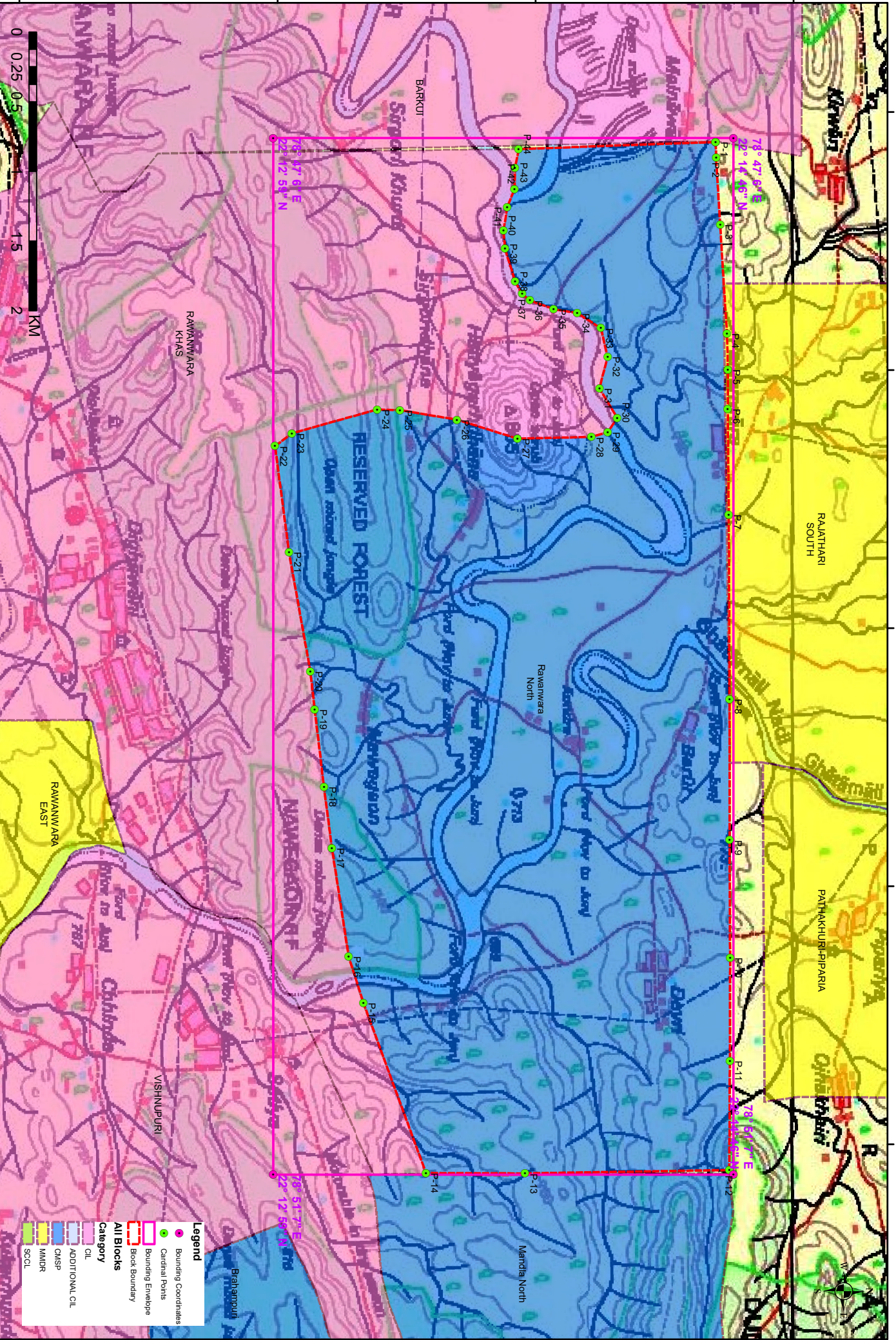
1. The above data is compiled from Geological Report, Salient Features of revised Rawanwara North Captive Block boundary (Annexure-I, CMPDIL Letter No. RIN/GD/98/931 dated 10th September, 1998) and the data furnished by the prior allottee in Annexure-I/II, as available. For clarifications with regard to above data, please refer aforesaid source documents.
2. The boundary of the block has been taken from GR after conversion to WGS84 system by feature matching. The block boundary is provisional and the cardinal points, bounding coordinates are approximate.
3. There may be a difference in area in the shape file and GR. Area in the shape file is based on feature mapped plan of the block as given in the GR. So, the area is tentative and field DGPS survey is required to ascertain the exact area.

Disclaimer:

1. The analysis is done on Beta-version (Trial Version) of Decision Support System (DSS) of FSI / MOEF.
2. The Decision Rules for various parameters of this DSS System are controlled by FSI.
3. CMPDI only runs this DSS to obtain the status of any block based on these Decision Rules.
4. The database of the Decision Rules is updated by FSI from time to time.
5. CMPDI does not own any responsibility for variation in the results which are based on the Decision Rules of the FSI DSS in case of any updation of the database at FSI end.
6. ESZ analysis and tiger habitat/ corridor given here is based on the information available in public domain. Bidders are encouraged to verify this information and any other information additionally available.

22°12'0"N
22°13'0"N
22°14'0"N
22°15'0"N

NOTE: Coordinates are provisional in WGS84 System



78°47'0"E
78°48'0"E
78°49'0"E
78°50'0"E
78°51'0"E

Ravanwara North

FOR INTERNAL/RESTRICTED USE ONLY

0 0.25 0.5 1.5 2 KM

Legend

- Bounding Coordinates
- Cardinal Points
- Bounding Envelope
- Block Boundary

All Blocks

Category	Symbol
OIL	[Pink Box]
ADDITIONAL CIL	[Light Blue Box]
OMS	[Light Green Box]
MIMR	[Light Yellow Box]
SCOL	[Light Purple Box]

22°12'0"N 22°13'0"N 22°14'0"N 22°15'0"N

Provisional Cardinal Points for Rawanwara North Block

POINT NO	Longitude (WGS84)	Latitude (WGS84)
P-1	78° 47' 6.952" E	22° 14' 41.860" N
P-2	78° 47' 10.581" E	22° 14' 41.993" N
P-3	78° 47' 26.174" E	22° 14' 42.939" N
P-4	78° 47' 51.401" E	22° 14' 44.508" N
P-5	78° 47' 59.849" E	22° 14' 44.732" N
P-6	78° 48' 8.990" E	22° 14' 44.699" N
P-7	78° 48' 33.550" E	22° 14' 44.939" N
P-8	78° 49' 16.438" E	22° 14' 45.154" N
P-9	78° 49' 49.261" E	22° 14' 45.141" N
P-10	78° 50' 16.591" E	22° 14' 45.252" N
P-11	78° 50' 40.505" E	22° 14' 45.186" N
P-12	78° 51' 5.921" E	22° 14' 45.072" N
P-13	78° 51' 6.705" E	22° 13' 57.556" N
P-14	78° 51' 6.620" E	22° 13' 34.517" N
P-15	78° 50' 27.052" E	22° 13' 19.980" N
P-16	78° 50' 16.323" E	22° 13' 16.532" N
P-17	78° 49' 51.056" E	22° 13' 12.642" N
P-18	78° 49' 36.910" E	22° 13' 10.781" N
P-19	78° 49' 18.795" E	22° 13' 8.615" N
P-20	78° 49' 10.026" E	22° 13' 7.639" N
P-21	78° 48' 42.337" E	22° 13' 2.670" N
P-22	78° 48' 17.636" E	22° 12' 59.421" N
P-23	78° 48' 14.677" E	22° 13' 3.372" N
P-24	78° 48' 9.114" E	22° 13' 23.135" N
P-25	78° 48' 9.292" E	22° 13' 28.465" N
P-26	78° 48' 11.491" E	22° 13' 41.704" N
P-27	78° 48' 15.906" E	22° 13' 55.805" N
P-28	78° 48' 15.516" E	22° 14' 12.995" N
P-29	78° 48' 14.403" E	22° 14' 16.776" N
P-30	78° 48' 11.077" E	22° 14' 19.007" N
P-31	78° 48' 4.249" E	22° 14' 14.874" N
P-32	78° 47' 56.861" E	22° 14' 16.757" N
P-33	78° 47' 50.215" E	22° 14' 15.203" N
P-34	78° 47' 46.714" E	22° 14' 9.698" N
P-35	78° 47' 45.798" E	22° 14' 4.196" N
P-36	78° 47' 43.773" E	22° 13' 58.693" N
P-37	78° 47' 42.261" E	22° 13' 56.869" N
P-38	78° 47' 39.378" E	22° 13' 55.254" N
P-39	78° 47' 31.765" E	22° 13' 52.882" N
P-40	78° 47' 27.495" E	22° 13' 52.555" N
P-41	78° 47' 22.070" E	22° 13' 53.408" N
P-42	78° 47' 17.913" E	22° 13' 55.122" N
P-43	78° 47' 12.951" E	22° 13' 55.224" N
P-44	78° 47' 8.602" E	22° 13' 56.084" N