

RAJATHARI SOUTH Block Summary
PART A

Sr. No.	Features	Details
1.	Location	
	Coal Block	RAJATHARI SOUTH
	Latitude	22° 14' 43" N- 22° 16' 19" N (Provisional)
	Longitude	78° 47' 39" E- 78° 50' 9" E (Provisional)
	Topo Sheet No.	55 J/15 & 55J/16
	Coalfield	PENCH-KANHAN
	Villages	Semartal, Paijanwada, Dungariya, Titra, Harra Set
	Tehsil/Taluka	Parasia
	District	Chhindwara
	State	Madhya Pradesh
2.	Connectivity with Block	
	Nearest Rail Head	The area is well connected with major rail-heads Nagpur and Pipariya. The nearest rail head is at Parasia town, which is falling on Chindwara-Amla (B.G) line connected to Nagpur.
	Road	Parasia is the nearest major colliery township situated about 15 km Southwest from the southern boundary of the area. It is situated about 155 km NNW of Nagpur, connected through NH-69 (from Nagpur to Saoner), followed by Maharashtra SH-250 (from Saoner to Kelwad) and MP SH-19 (from Kelwad to Parasia). From Pipariya, it is situated about 110 km SSE along MP SH-19. Chhindwara, the district town, situated about 35 km southeast from the area, is also well connected along MP SH-19. The approach road for the working area is the east west trending Anakhawari-Dungariya road, Anakhawari being situated on SH-19. The interior parts of the area can be accessed by a number of unmetalled roads.
	Airport	
3.	Area	
	Geological Block Area	10.51 Sq Km (As per shape file. Refer note below)
	Forest Area	0.28sq km.
	Non-Forest Area	10.23 Sq km
4.	Climate and Topography	
	Average Annual Rainfall	1070 mm
	Temperature (Min. — Max.)	10° C-48° C
	Local Surface Drainage Channels	The main drainage of the area is governed by Ghatamali river in the east of the block and is flowing from North to South.
	Rivers	-

5.	Exploration				
	Status	Regionally Explored			
	Exploration Agency	GSI			
	Total Number of Boreholes with meterage	9 Boreholes, 3855.55 m (Including 6 suspended BHs by CDA. Provisionally accepted meterage given)			
	Borehole Density	Approx. 1 Borehole/sq.km.			
	General Dip of Seams	An average 5° to 9° northerly dip.			
	General Strike Direction	A general ENE-WSW to E-W strike.			
6.	Coal Seams & Reserve				
	Coal Seams	Thickness Range (m)	Depth Range (m)	Resources (mt) (Indicated)	Grade
	Seam-I	0.70-1.62	353.10-395.12		A-G
	Seam-II	1.69	410.10-414.60		E
	Seam-III	0.80-2.62	381.40-433.40		A-G
	Seam-IV	0.40-3.42	388.00-444.32		A-B
	Seam-V	1.5	450.80-453.00		A-G
	Total			197.00	
7.	Surface Constraints	HILLY TERRAIN			
8.	Grade of coal	G7 (Provisional) weighted average grade based on grade-wise resources given in regional GR of Rajathari South by GSI.			
9.	Decision Support System (DSS) Analysis	Hydrology info: The polygon touches major river(s).- Devrani Nala			
10.	Eco Sensitive Zone (ESZ)	NW boundary of the block is approx. 10 km from the boundary of ESZ of Panchmarhi. SW boundary of the block is approx. 28 km from the tiger corridor connecting Panchmarhi (Satpura) and Pench.			

Note:

1. The summary data is compiled from “Final Report on Exploration for Coal by Scout Drilling in Rajathari (South) Area, Pench Valley Coalfield, Chhindwara District, madhya pradesh. gsi-2008”

Disclaimer:

1. The analysis is done on Beta-version (Trial Version) of Decision Support System (DSS) of FSI / MOEF.
2. The Decision Rules for various parameters of this DSS System are controlled by FSI.
3. CMPDI only runs this DSS to obtain the status of any block based on these Decision Rules.
4. The database of the Decision Rules is updated by FSI from time to time.
5. CMPDI does not own any responsibility for variation in the results which are based on the Decision Rules of the FSI DSS in case of any updation of the database at FSI end.
6. ESZ analysis and tiger habitat/ corridor given here is based on the information available in public domain. Bidders are encouraged to verify this information and any other information additionally available.

Rajathari South Block, Pench Kanhan Coalfield

FOR INTERNAL/RESTRICTED USE ONLY

78°48'0"E

78°49'0"E

78°50'0"E

22°15'0"N

22°16'0"N

22°15'0"N

22°16'0"N

Legend

- Bounding Points
- Bounding Envelope
- Cardinal Points
- Block Boundary

OCBIS_BLOCKS

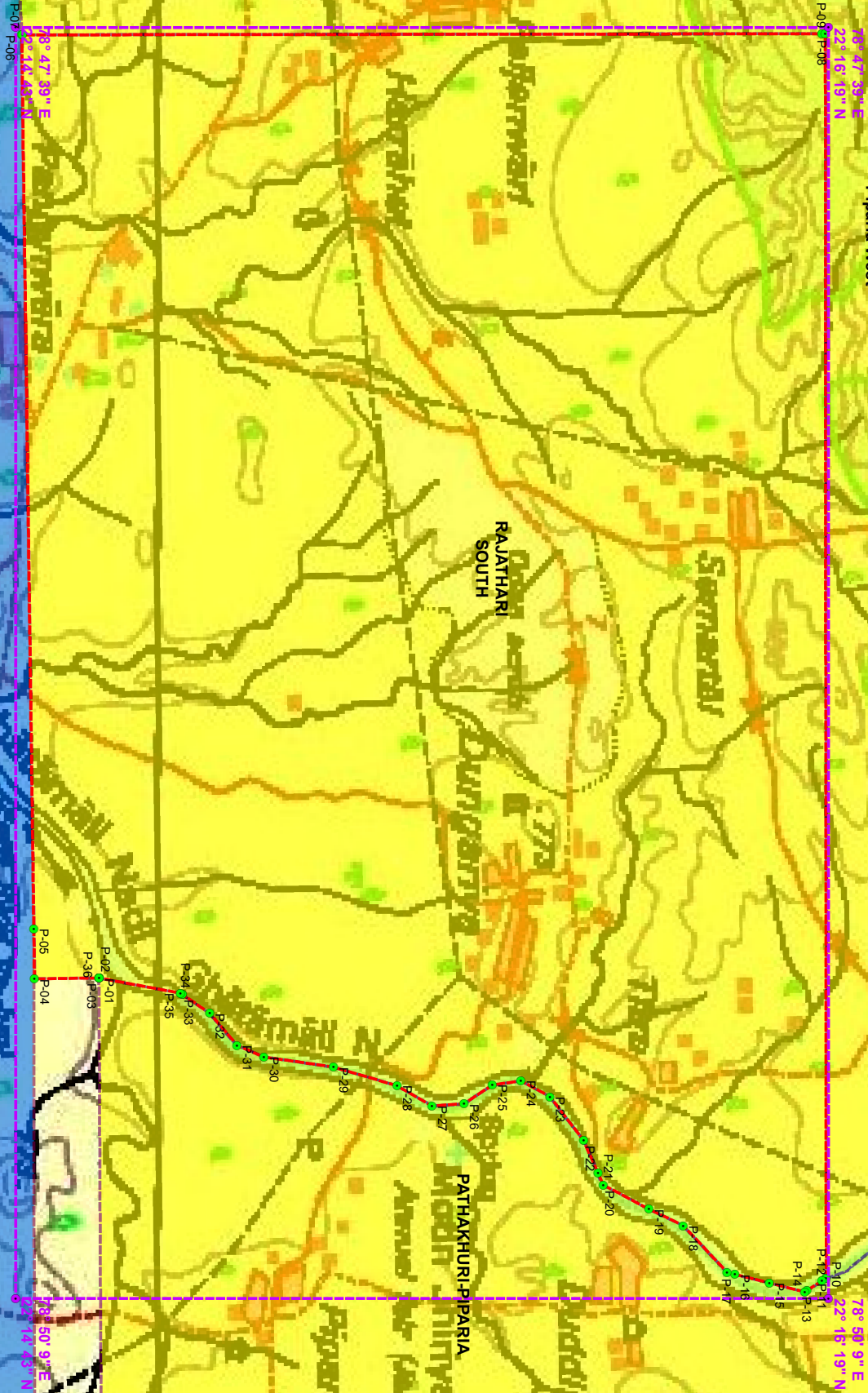
Category

- CIL
- ADDITIONAL CIL
- CMSP
- MMDR
- SCCL

Rajathari
South-Pathakuri
Piparia West

RAJATHARI
SOUTH

PATHAKHURI-PIPARIA



78°48'0"E

78°49'0"E

78°50'0"E

P-07 P-06

78° 47' 39" E
22° 14' 43" N

P-09 P-08

78° 47' 39" E
22° 16' 19" N

P-05 P-04

78° 50' 9" E
22° 14' 43" N

P-10 P-11

78° 50' 9" E
22° 15' 19" N

P-02 P-01

78° 47' 39" E
22° 14' 43" N

P-12 P-11

78° 47' 39" E
22° 15' 19" N

P-34 P-33

78° 47' 39" E
22° 14' 43" N

P-14 P-13

78° 47' 39" E
22° 15' 19" N

P-32

78° 47' 39" E
22° 14' 43" N

P-16 P-15

78° 47' 39" E
22° 15' 19" N

P-31

78° 47' 39" E
22° 14' 43" N

P-17

78° 47' 39" E
22° 15' 19" N

P-30

78° 47' 39" E
22° 14' 43" N

P-18

78° 47' 39" E
22° 15' 19" N

P-29

78° 47' 39" E
22° 14' 43" N

P-19

78° 47' 39" E
22° 15' 19" N

P-28

78° 47' 39" E
22° 14' 43" N

P-20

78° 47' 39" E
22° 15' 19" N

P-27

78° 47' 39" E
22° 14' 43" N

P-21

78° 47' 39" E
22° 15' 19" N

P-26

78° 47' 39" E
22° 14' 43" N

P-22

78° 47' 39" E
22° 15' 19" N

P-25

78° 47' 39" E
22° 14' 43" N

P-23

78° 47' 39" E
22° 15' 19" N

P-24

78° 47' 39" E
22° 14' 43" N

P-24

78° 47' 39" E
22° 15' 19" N

P-23

78° 47' 39" E
22° 14' 43" N

P-25

78° 47' 39" E
22° 15' 19" N

P-22

78° 47' 39" E
22° 14' 43" N

P-26

78° 47' 39" E
22° 15' 19" N

P-21

78° 47' 39" E
22° 14' 43" N

P-27

78° 47' 39" E
22° 15' 19" N

P-20

78° 47' 39" E
22° 14' 43" N

P-28

78° 47' 39" E
22° 15' 19" N

P-19

78° 47' 39" E
22° 14' 43" N

P-29

78° 47' 39" E
22° 15' 19" N

P-18

78° 47' 39" E
22° 14' 43" N

P-30

78° 47' 39" E
22° 15' 19" N

P-17

78° 47' 39" E
22° 14' 43" N

P-31

78° 47' 39" E
22° 15' 19" N

P-16

78° 47' 39" E
22° 14' 43" N

P-32

78° 47' 39" E
22° 15' 19" N

P-15

78° 47' 39" E
22° 14' 43" N

P-33

78° 47' 39" E
22° 15' 19" N

P-14

78° 47' 39" E
22° 14' 43" N

P-34

78° 47' 39" E
22° 15' 19" N

P-13

78° 47' 39" E
22° 14' 43" N

P-35

78° 47' 39" E
22° 15' 19" N

P-12

78° 47' 39" E
22° 14' 43" N

P-36

78° 47' 39" E
22° 15' 19" N

P-11

78° 47' 39" E
22° 14' 43" N

P-37

78° 47' 39" E
22° 15' 19" N

P-10

78° 47' 39" E
22° 14' 43" N

P-38

78° 47' 39" E
22° 15' 19" N

P-09

78° 47' 39" E
22° 14' 43" N

P-39

78° 47' 39" E
22° 15' 19" N

P-08

78° 47' 39" E
22° 14' 43" N

P-40

78° 47' 39" E
22° 15' 19" N

P-07

78° 47' 39" E
22° 14' 43" N

P-41

78° 47' 39" E
22° 15' 19" N

78°48'0"E

78°49'0"E

78°50'0"E

78°48'0"E

78°49'0"E

78°50'0"E

Provisional Cardinal Points for RAJATHARI SOUTH Block

POINT NO	Longitude (WGS84)	Latitude (WGS84)
P-1	78° 49' 31.179" E	22° 14' 52.875" N
P-2	78° 49' 31.179" E	22° 14' 52.873" N
P-3	78° 49' 31.179" E	22° 14' 52.873" N
P-4	78° 49' 31.307" E	22° 14' 45.231" N
P-5	78° 49' 25.372" E	22° 14' 45.150" N
P-6	78° 47' 39.883" E	22° 14' 43.722" N
P-7	78° 47' 39.883" E	22° 14' 43.792" N
P-8	78° 47' 39.754" E	22° 16' 18.209" N
P-9	78° 47' 39.753" E	22° 16' 18.604" N
P-10	78° 50' 6.588" E	22° 16' 18.699" N
P-11	78° 50' 6.610" E	22° 16' 18.665" N
P-12	78° 50' 6.915" E	22° 16' 18.199" N
P-13	78° 50' 8.072" E	22° 16' 16.433" N
P-14	78° 50' 8.225" E	22° 16' 16.200" N
P-15	78° 50' 7.178" E	22° 16' 12.002" N
P-16	78° 50' 6.166" E	22° 16' 7.942" N
P-17	78° 50' 5.931" E	22° 16' 6.999" N
P-18	78° 50' 0.396" E	22° 16' 1.837" N
P-19	78° 49' 58.461" E	22° 15' 57.795" N
P-20	78° 49' 55.604" E	22° 15' 52.378" N
P-21	78° 49' 54.196" E	22° 15' 51.756" N
P-22	78° 49' 50.343" E	22° 15' 50.053" N
P-23	78° 49' 45.176" E	22° 15' 46.094" N
P-24	78° 49' 43.333" E	22° 15' 42.654" N
P-25	78° 49' 43.798" E	22° 15' 39.303" N
P-26	78° 49' 46.018" E	22° 15' 35.953" N
P-27	78° 49' 46.299" E	22° 15' 32.171" N
P-28	78° 49' 43.902" E	22° 15' 28.043" N
P-29	78° 49' 41.694" E	22° 15' 20.564" N
P-30	78° 49' 40.502" E	22° 15' 12.311" N
P-31	78° 49' 39.121" E	22° 15' 9.130" N
P-32	78° 49' 35.338" E	22° 15' 5.946" N
P-33	78° 49' 33.125" E	22° 15' 2.688" N
P-34	78° 49' 33.110" E	22° 15' 2.667" N
P-35	78° 49' 32.979" E	22° 15' 2.473" N