

RABODH COAL BLOCK SUMMARY

PART A

Sr. No	Features	Details
1. Location		
	Coal Block	Rabodh Block
	Latitude	23° 43' 40" to 23° 44' 59" N (Provisional)
	Longitude	85° 24' 33" to 85° 26' 52" E (Provisional)
	Topo Sheet No.	73 E/5 and 73 E/6
	Coalfield	West Bokaro Coalfield
	Villages	Rabodh, Chiruatoli, Bhurkunda, Kodwa, Darbanatoli
	Tehsil/Taluka	
	District	Hazaribagh
	State	Jharkhand
2. Connectivity with Block		
	Nearest Rail Head	The nearest railway station is at Ranchi Road on the Gomoh-Barkakana loopline.
	Road	The Rabodh Block is connected to metalled Coal Trunk road by approx... 2 km. long all weather metalled road. The Coal Trunk road passes through south of the block and meets NH-33 (Hazaribagh-Ranchi section) at Naya More, Kuju, at a distance about 10km east of the block. The Rabodh block is connected to NH-33 between Ranchi and Hazaribagh by an all-weather road. Ranchi is 60 km & Hazaribagh is 40 km from the block.
	Airport	The nearest airport is at Ranchi located at a distance of about 70km.
3. Area		
	Geological Block Area	As per GR: 5.85 sq.km. approx. As per shapefile: 6.04 sq.km. (In WGS84 datum) approx.
	Forest Area	Approx. 3% (As per FSI)
	Non-Forest Area	Approx. 97 % (As per FSI)
4. Climate and Topography		
	Average Annual Rainfall	
	Temperature (Min. — Max.)	4° - 45°
	Local Surface Drainage Channels	The topography of the Rabodh block is generally gently undulating. It is hilly in the form of sandstone ridges and mounds in the northwestern part. The westerly flowing Gerua Nadi, a tributary of the Bokaro River, drains it.
	Rivers	Gerua Nadi
5. Exploration		

	Status	Explored				
	Exploration Agency	CMPDI				
	Total Number of Boreholes with	120 Boreholes; 20725.10 km				
	Borehole Density	Approx. 20 Boreholes /sq.km.				
	General Dip of Seams	12° to 19° dipping northerly in the eastern & central part and north easterly in the western part.				
	General Strike Direction	The strike is east to west in the eastern & central part and swings to southwest in the western part.				
6.	Coal Seams & Reserve					
	Coal Seams	Thickness Range (m)	Depth Range (m)	Geological Resources (MT)		Grade
				Proved	Indicated	
	XIII	0.20 -1.80	27.48 -101.49			C-F
	XII	0.79 – 4.30	11.28 – 130.32	5.60	2.05	D-G
	XIA	0.24 – 1.54	17.00 – 136.20	1.14	1.12	-
	XI	1.00 – 8.42	4.00 – 142.58	8.51	4.72	-
	XA	0.10 – 2.50	13.4 -187.10	1.17	0.53	B-G
	X	0.20 – 4.85	12.0 – 204.05	1.96	0.16	A-F
	IXA	0.05 – 3.00	15.5 – 259.5	2.33	-	A-G
	IX	0.20 – 4.02	13.0 -270.82	7.20	3.08	E-F
	VIIIC	0.18 – 2.45	18.10 – 294.10	-	-	SI-UG
	VIIIB	0.20 - 2.60	14.00 – 359.40	-	-	SI-UG
	VIIIB/C	1.32 – 2.00	-	-	-	-
	VIIIA	0.10 – 01.70	53.00 – 214.35	-	-	WIII-WIV
	VIII	0.32 – 3.70	14.62 – 346.20	4.80	2.88	WII-UG
	VIIIC	1.00 – 3.10	-	-	-	WII-UG
	VIIIB	0.10 – 2.00	13.0 – 359.4	-	-	WIV-UG
	VIIIB/C	0.70 – 3.00	26.00 – 138.50	-	-	-
	VII A/B	0.85 – 3.30	15.74 – 191.20	-	-	WII-UG
	VIIIA	0.25 – 1.50	17.30 – 361.18	-	-	-
	VII / VI	2.33 – 7.32	3.50 – 366.48	14.68	7.14	WI-WIII
	VA	0.10 – 1.80	19.4 -389.0	-	-	WIII-UG
	V	3.00 – 14.30	6.0 – 400.0	32.22	12.65	WIV-UG
	IV	0.40 – 4.10	15.5 – 415.2	6.54	3.54	WII-UG
	III	0.10 – 3.41	17.80 – 303.08	4.99	1.59	WIII-UG
	II	0.25 -1.80	27.40 – 322.73	2.57	-	WI-UG
	I Comb.	0.10 – 4.60	9.50 – 331.80	-	-	WI-UG
	I Top	0.30 – 3.02	39.58- 249.0	-	-	-
	I Bottom	0.50 – 2.60	42.40 – 251.45	-	-	-
		Total		93.71	39.46	
		Grand Total		133.17		
7.	Surface Constraints					
8.	Grade of coal	W-IV & G10 (Provisional) based on weighted average grade as per grade-wise data available in GR.				
9.	Decision Support System (DSS) Analysis	Not inviolate				

10.	Eco Sensitive Zone (ESZ) Analysis	Northern boundary of the block is approx. 31 km from the boundary of ESZ of Hazaribagh.
------------	--	---

PART B

Sr. No.	Features	Details
1.	Previous Allocation	
	Name and Address of Allocatee	M/s Jharkhand State Mineral Development Corporation Khanji Nigam Bhawan, Doranda, Ranchi-834002
2.	Target Capacity as per Mining Plan	2.5 MTY
3.	Status of Clearances/Approvals (As per information submitted by prior allottee)	
	Mining Plan/ Mine Closure Plan	<i>Available but not Approved</i>
	Forest Clearance	<i>No</i>
	Environmental Clearance	<i>No</i>
	Mining Lease	<i>No</i>
	Land Acquisition	<i>No</i>
	No. of PAFs	--
4.	Surface Infrastructure already built, if any.	<i>Nil</i>

Note:

1. The above data is compiled from Geological Report, Mining Plan and the data furnished by the prior allottee in Annexure-I/II, as available. For clarifications with regard to above data, please refer aforesaid source documents.
2. The boundary of the block has been taken from GR after conversion to WGS84 system by feature matching. The block boundary is provisional and the cardinal points, bounding co-ordinates are approximate.
3. There is a difference in area in the shape file and GR. Area in the shape file is based on feature mapped plan of the block as given in the GR. So, the area is tentative and field DGPS survey is required to ascertain the exact area.

Disclaimer:

1. The analysis is done on Beta-version (Trial Version) of Decision Support System (DSS) of FSI/MOEF.
2. The Decision Rules for various parameters of this DSS System are controlled by FSI.
3. CMPDI only runs this DSS to obtain the status of any block based on these Decision Rules.
4. The database of the Decision Rules is updated by FSI from time to time.
5. CMPDI does not own any responsibility for variation in the results which are based on the decision Rules of the FSI DSS in case of any updation of the database at FSI end.
6. ESZ analysis and tiger habitat/ corridor given here is based on the information available in public domain. Bidders are encouraged to verify this information and any other information additionally available.

23°43'30"N

23°44'0"N

23°44'30"N

23°45'0"N

85°24'30"E

85°25'0"E

85°25'30"E

85°26'0"E

85°26'30"E

85°27'0"E

85°24'30"E

85°25'0"E

85°25'30"E

85°26'0"E

85°26'30"E

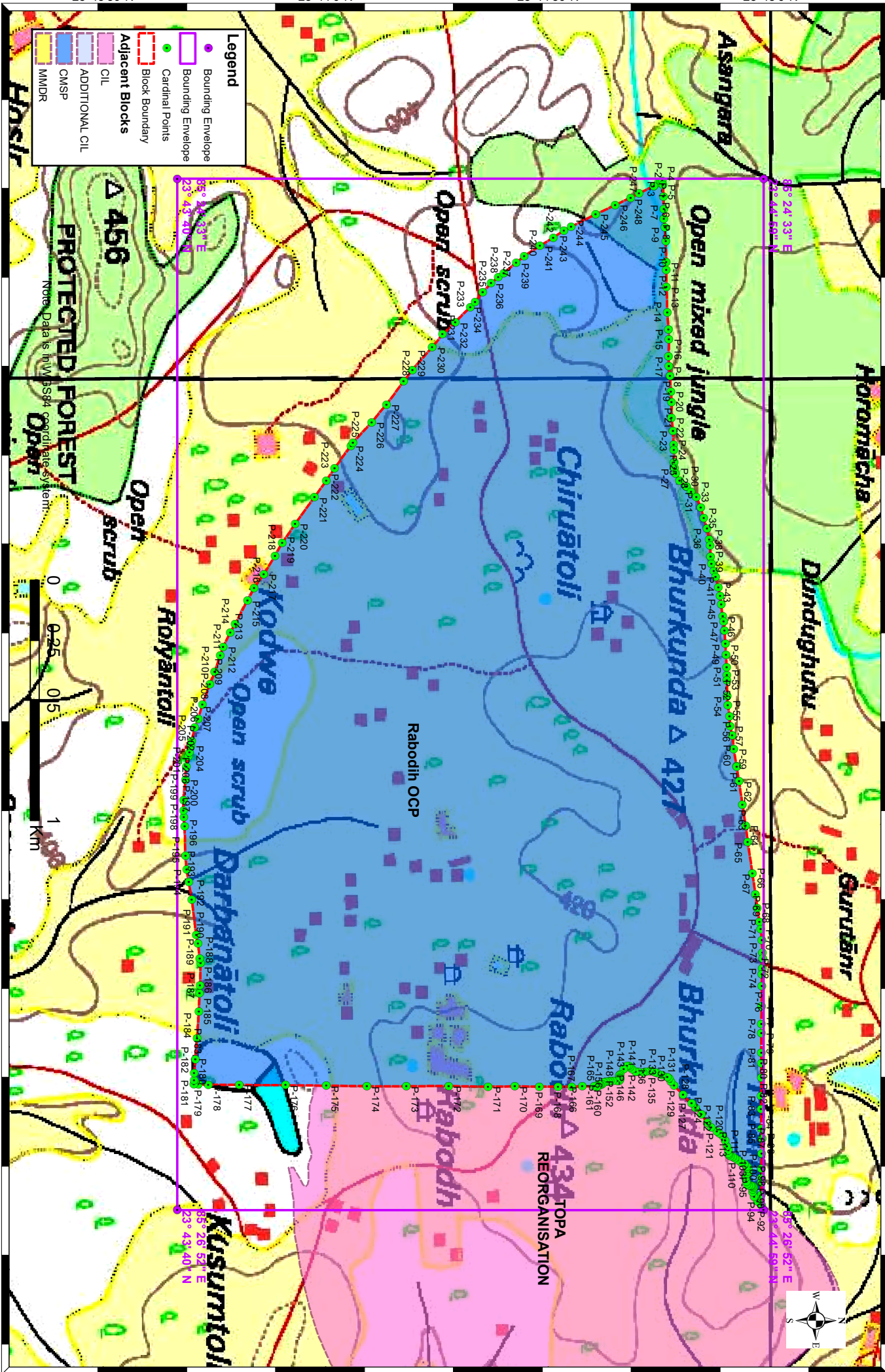
85°27'0"E

Rabodih OCP Block, West Bokaro Coalfield

FOR INTERNAL/RESTRICTED USE ONLY

Legend

- Bounding Envelope
- Bounding Envelope
- Cardinal Points
- Block Boundary
- Adjacent Blocks
- CIL
- ADDITIONAL CIL
- CMSP
- MMDR



23°43'30"N

23°44'0"N

23°44'30"N

23°45'0"N

23°43'30"E

23°44'0"E

23°44'30"E

23°45'0"E

Provisional Cardinal Points for Rabodih OCP Block

POINT NO	Longitude (WGS84)	Latitude (WGS84)
P-1	85° 24' 34.017" E	23° 44' 44.188" N
P-2	85° 24' 33.577" E	23° 44' 44.862" N
P-3	85° 24' 33.378" E	23° 44' 45.167" N
P-4	85° 24' 33.336" E	23° 44' 45.368" N
P-5	85° 24' 33.845" E	23° 44' 45.456" N
P-6	85° 24' 35.442" E	23° 44' 45.524" N
P-7	85° 24' 37.091" E	23° 44' 45.552" N
P-8	85° 24' 38.463" E	23° 44' 45.576" N
P-9	85° 24' 39.547" E	23° 44' 45.706" N
P-10	85° 24' 41.439" E	23° 44' 45.824" N
P-11	85° 24' 44.261" E	23° 44' 45.885" N
P-12	85° 24' 45.324" E	23° 44' 45.875" N
P-13	85° 24' 47.648" E	23° 44' 45.931" N
P-14	85° 24' 51.010" E	23° 44' 46.041" N
P-15	85° 24' 53.356" E	23° 44' 46.215" N
P-16	85° 24' 54.652" E	23° 44' 46.261" N
P-17	85° 24' 56.977" E	23° 44' 46.199" N
P-18	85° 24' 58.273" E	23° 44' 46.234" N
P-19	85° 24' 59.579" E	23° 44' 46.387" N
P-20	85° 25' 1.703" E	23° 44' 46.527" N
P-21	85° 25' 3.151" E	23° 44' 46.595" N
P-22	85° 25' 5.253" E	23° 44' 46.585" N
P-23	85° 25' 6.980" E	23° 44' 46.796" N
P-24	85° 25' 8.882" E	23° 44' 46.891" N
P-25	85° 25' 9.548" E	23° 44' 46.919" N
P-26	85° 25' 11.241" E	23° 44' 46.947" N
P-27	85° 25' 12.081" E	23° 44' 46.999" N
P-28	85° 25' 12.698" E	23° 44' 47.166" N
P-29	85° 25' 13.708" E	23° 44' 47.671" N
P-30	85° 25' 14.482" E	23° 44' 48.587" N
P-31	85° 25' 14.521" E	23° 44' 48.623" N
P-32	85° 25' 15.198" E	23° 44' 49.246" N
P-33	85° 25' 15.944" E	23° 44' 49.969" N
P-34	85° 25' 17.298" E	23° 44' 50.554" N
P-35	85° 25' 18.758" E	23° 44' 50.947" N
P-36	85° 25' 20.121" E	23° 44' 51.374" N
P-37	85° 25' 21.635" E	23° 44' 51.665" N
P-38	85° 25' 22.411" E	23° 44' 51.803" N
P-39	85° 25' 23.950" E	23° 44' 51.860" N
P-40	85° 25' 24.913" E	23° 44' 52.008" N
P-41	85° 25' 25.896" E	23° 44' 52.300" N
P-42	85° 25' 26.648" E	23° 44' 52.569" N
P-43	85° 25' 28.071" E	23° 44' 52.921" N
P-44	85° 25' 29.235" E	23° 44' 53.153" N
P-45	85° 25' 30.377" E	23° 44' 53.302" N
P-46	85° 25' 31.996" E	23° 44' 53.498" N
P-47	85° 25' 32.713" E	23° 44' 53.622" N

Provisional Cardinal Points for Rabodih OCP Block

POINT NO	Longitude (WGS84)	Latitude (WGS84)
P-48	85° 25' 33.930" E	23° 44' 53.744" N
P-49	85° 25' 35.715" E	23° 44' 53.866" N
P-50	85° 25' 37.172" E	23° 44' 53.942" N
P-51	85° 25' 38.807" E	23° 44' 54.042" N
P-52	85° 25' 39.898" E	23° 44' 54.080" N
P-53	85° 25' 40.579" E	23° 44' 54.080" N
P-54	85° 25' 42.784" E	23° 44' 54.096" N
P-55	85° 25' 43.994" E	23° 44' 54.184" N
P-56	85° 25' 45.426" E	23° 44' 54.439" N
P-57	85° 25' 46.778" E	23° 44' 54.522" N
P-58	85° 25' 48.061" E	23° 44' 54.789" N
P-59	85° 25' 49.875" E	23° 44' 55.001" N
P-60	85° 25' 52.172" E	23° 44' 55.382" N
P-61	85° 25' 52.283" E	23° 44' 55.391" N
P-62	85° 25' 54.211" E	23° 44' 55.694" N
P-63	85° 25' 57.329" E	23° 44' 56.157" N
P-64	85° 26' 0.179" E	23° 44' 56.591" N
P-65	85° 26' 2.418" E	23° 44' 56.883" N
P-66	85° 26' 6.627" E	23° 44' 57.510" N
P-67	85° 26' 9.463" E	23° 44' 57.917" N
P-68	85° 26' 11.277" E	23° 44' 58.142" N
P-69	85° 26' 13.149" E	23° 44' 58.464" N
P-70	85° 26' 14.149" E	23° 44' 58.625" N
P-71	85° 26' 15.590" E	23° 44' 58.764" N
P-72	85° 26' 17.338" E	23° 44' 58.871" N
P-73	85° 26' 18.056" E	23° 44' 58.892" N
P-74	85° 26' 19.439" E	23° 44' 58.830" N
P-75	85° 26' 20.180" E	23° 44' 58.783" N
P-76	85° 26' 21.832" E	23° 44' 58.792" N
P-77	85° 26' 24.576" E	23° 44' 58.744" N
P-78	85° 26' 26.931" E	23° 44' 58.686" N
P-79	85° 26' 28.187" E	23° 44' 58.712" N
P-80	85° 26' 30.826" E	23° 44' 58.718" N
P-81	85° 26' 32.254" E	23° 44' 58.705" N
P-82	85° 26' 34.138" E	23° 44' 58.703" N
P-83	85° 26' 36.575" E	23° 44' 58.673" N
P-84	85° 26' 38.369" E	23° 44' 58.663" N
P-85	85° 26' 41.030" E	23° 44' 58.697" N
P-86	85° 26' 42.360" E	23° 44' 58.800" N
P-87	85° 26' 44.424" E	23° 44' 58.738" N
P-88	85° 26' 46.375" E	23° 44' 58.702" N
P-89	85° 26' 47.654" E	23° 44' 58.695" N
P-90	85° 26' 48.303" E	23° 44' 58.695" N
P-91	85° 26' 49.971" E	23° 44' 58.697" N
P-92	85° 26' 51.376" E	23° 44' 58.725" N
P-93	85° 26' 50.822" E	23° 44' 58.190" N
P-94	85° 26' 50.162" E	23° 44' 57.743" N

Provisional Cardinal Points for Rabodih OCP Block

POINT NO	Longitude (WGS84)	Latitude (WGS84)
P-95	85° 26' 49.574" E	23° 44' 57.537" N
P-96	85° 26' 49.192" E	23° 44' 57.568" N
P-97	85° 26' 48.997" E	23° 44' 57.655" N
P-98	85° 26' 48.811" E	23° 44' 57.585" N
P-99	85° 26' 48.715" E	23° 44' 57.432" N
P-100	85° 26' 48.702" E	23° 44' 57.281" N
P-101	85° 26' 48.735" E	23° 44' 57.013" N
P-102	85° 26' 48.534" E	23° 44' 56.771" N
P-103	85° 26' 48.154" E	23° 44' 56.684" N
P-104	85° 26' 47.570" E	23° 44' 56.720" N
P-105	85° 26' 47.105" E	23° 44' 56.873" N
P-106	85° 26' 46.716" E	23° 44' 56.925" N
P-107	85° 26' 46.402" E	23° 44' 56.942" N
P-108	85° 26' 46.164" E	23° 44' 56.795" N
P-109	85° 26' 45.832" E	23° 44' 56.482" N
P-110	85° 26' 45.628" E	23° 44' 56.019" N
P-111	85° 26' 45.282" E	23° 44' 55.561" N
P-112	85° 26' 45.025" E	23° 44' 55.146" N
P-113	85° 26' 44.857" E	23° 44' 54.855" N
P-114	85° 26' 44.711" E	23° 44' 54.565" N
P-115	85° 26' 44.563" E	23° 44' 54.364" N
P-116	85° 26' 44.377" E	23° 44' 54.286" N
P-117	85° 26' 43.952" E	23° 44' 54.261" N
P-118	85° 26' 43.363" E	23° 44' 54.056" N
P-119	85° 26' 42.641" E	23° 44' 53.815" N
P-120	85° 26' 42.039" E	23° 44' 53.506" N
P-121	85° 26' 41.619" E	23° 44' 53.034" N
P-122	85° 26' 41.369" E	23° 44' 52.701" N
P-123	85° 26' 40.832" E	23° 44' 51.952" N
P-124	85° 26' 40.255" E	23° 44' 51.451" N
P-125	85° 26' 39.106" E	23° 44' 50.627" N
P-126	85° 26' 38.181" E	23° 44' 49.847" N
P-127	85° 26' 37.574" E	23° 44' 49.298" N
P-128	85° 26' 36.489" E	23° 44' 48.145" N
P-129	85° 26' 35.195" E	23° 44' 46.969" N
P-130	85° 26' 34.692" E	23° 44' 46.516" N
P-131	85° 26' 34.291" E	23° 44' 46.278" N
P-132	85° 26' 34.047" E	23° 44' 46.063" N
P-133	85° 26' 33.794" E	23° 44' 45.331" N
P-134	85° 26' 33.570" E	23° 44' 44.668" N
P-135	85° 26' 33.431" E	23° 44' 44.391" N
P-136	85° 26' 33.280" E	23° 44' 43.929" N
P-137	85° 26' 33.268" E	23° 44' 43.670" N
P-138	85° 26' 33.392" E	23° 44' 43.094" N
P-139	85° 26' 33.466" E	23° 44' 42.754" N
P-140	85° 26' 33.384" E	23° 44' 42.099" N
P-141	85° 26' 33.306" E	23° 44' 41.754" N

Provisional Cardinal Points for Rabodih OCP Block

POINT NO	Longitude (WGS84)	Latitude (WGS84)
P-142	85° 26' 33.035" E	23° 44' 41.284" N
P-143	85° 26' 32.741" E	23° 44' 41.024" N
P-144	85° 26' 32.547" E	23° 44' 40.852" N
P-145	85° 26' 32.557" E	23° 44' 40.632" N
P-146	85° 26' 33.018" E	23° 44' 40.169" N
P-147	85° 26' 33.712" E	23° 44' 39.694" N
P-148	85° 26' 33.937" E	23° 44' 39.573" N
P-149	85° 26' 34.101" E	23° 44' 39.622" N
P-150	85° 26' 34.272" E	23° 44' 39.679" N
P-151	85° 26' 34.422" E	23° 44' 39.660" N
P-152	85° 26' 34.551" E	23° 44' 39.544" N
P-153	85° 26' 34.561" E	23° 44' 39.297" N
P-154	85° 26' 34.553" E	23° 44' 38.677" N
P-155	85° 26' 34.602" E	23° 44' 38.347" N
P-156	85° 26' 34.687" E	23° 44' 38.087" N
P-157	85° 26' 34.721" E	23° 44' 37.784" N
P-158	85° 26' 34.807" E	23° 44' 37.503" N
P-159	85° 26' 34.996" E	23° 44' 37.271" N
P-160	85° 26' 35.118" E	23° 44' 37.073" N
P-161	85° 26' 35.105" E	23° 44' 36.887" N
P-162	85° 26' 35.077" E	23° 44' 36.776" N
P-163	85° 26' 35.302" E	23° 44' 36.696" N
P-164	85° 26' 35.378" E	23° 44' 36.559" N
P-165	85° 26' 35.331" E	23° 44' 36.167" N
P-166	85° 26' 35.327" E	23° 44' 34.598" N
P-167	85° 26' 35.359" E	23° 44' 33.132" N
P-168	85° 26' 35.344" E	23° 44' 31.309" N
P-169	85° 26' 35.344" E	23° 44' 28.783" N
P-170	85° 26' 35.331" E	23° 44' 25.473" N
P-171	85° 26' 35.366" E	23° 44' 21.875" N
P-172	85° 26' 35.287" E	23° 44' 16.569" N
P-173	85° 26' 35.303" E	23° 44' 10.858" N
P-174	85° 26' 35.298" E	23° 44' 5.566" N
P-175	85° 26' 35.229" E	23° 44' 0.067" N
P-176	85° 26' 35.175" E	23° 43' 54.569" N
P-177	85° 26' 35.129" E	23° 43' 48.337" N
P-178	85° 26' 35.104" E	23° 43' 44.191" N
P-179	85° 26' 35.083" E	23° 43' 42.832" N
P-180	85° 26' 35.090" E	23° 43' 42.248" N
P-181	85° 26' 34.518" E	23° 43' 42.263" N
P-182	85° 26' 33.517" E	23° 43' 42.295" N
P-183	85° 26' 31.720" E	23° 43' 42.451" N
P-184	85° 26' 28.875" E	23° 43' 42.676" N
P-185	85° 26' 25.195" E	23° 43' 42.928" N
P-186	85° 26' 22.733" E	23° 43' 43.006" N
P-187	85° 26' 21.740" E	23° 43' 43.094" N
P-188	85° 26' 18.718" E	23° 43' 43.146" N

Provisional Cardinal Points for Rabodih OCP Block

POINT NO	Longitude (WGS84)	Latitude (WGS84)
P-189	85° 26' 18.052" E	23° 43' 43.021" N
P-190	85° 26' 16.076" E	23° 43' 42.779" N
P-191	85° 26' 14.957" E	23° 43' 42.576" N
P-192	85° 26' 10.105" E	23° 43' 41.955" N
P-193	85° 26' 7.800" E	23° 43' 41.549" N
P-194	85° 26' 6.099" E	23° 43' 41.295" N
P-195	85° 26' 4.301" E	23° 43' 41.117" N
P-196	85° 26' 0.261" E	23° 43' 40.983" N
P-197	85° 25' 59.012" E	23° 43' 40.898" N
P-198	85° 25' 58.150" E	23° 43' 40.838" N
P-199	85° 25' 56.754" E	23° 43' 40.844" N
P-200	85° 25' 54.010" E	23° 43' 41.105" N
P-201	85° 25' 52.220" E	23° 43' 41.252" N
P-202	85° 25' 50.888" E	23° 43' 41.502" N
P-203	85° 25' 50.264" E	23° 43' 41.630" N
P-204	85° 25' 49.393" E	23° 43' 41.858" N
P-205	85° 25' 48.820" E	23° 43' 41.945" N
P-206	85° 25' 47.015" E	23° 43' 42.361" N
P-207	85° 25' 45.833" E	23° 43' 42.818" N
P-208	85° 25' 43.903" E	23° 43' 43.382" N
P-209	85° 25' 41.184" E	23° 43' 44.381" N
P-210	85° 25' 39.505" E	23° 43' 45.050" N
P-211	85° 25' 37.203" E	23° 43' 45.806" N
P-212	85° 25' 36.094" E	23° 43' 46.177" N
P-213	85° 25' 34.199" E	23° 43' 47.143" N
P-214	85° 25' 33.026" E	23° 43' 47.782" N
P-215	85° 25' 29.861" E	23° 43' 49.463" N
P-216	85° 25' 28.196" E	23° 43' 50.359" N
P-217	85° 25' 26.291" E	23° 43' 51.651" N
P-218	85° 25' 23.829" E	23° 43' 53.189" N
P-219	85° 25' 22.141" E	23° 43' 54.132" N
P-220	85° 25' 19.536" E	23° 43' 55.886" N
P-221	85° 25' 15.922" E	23° 43' 58.502" N
P-222	85° 25' 13.722" E	23° 44' 0.089" N
P-223	85° 25' 12.033" E	23° 44' 1.187" N
P-224	85° 25' 9.007" E	23° 44' 3.411" N
P-225	85° 25' 8.606" E	23° 44' 3.686" N
P-226	85° 25' 5.834" E	23° 44' 6.202" N
P-227	85° 25' 3.427" E	23° 44' 8.205" N
P-228	85° 25' 0.327" E	23° 44' 10.506" N
P-229	85° 24' 58.768" E	23° 44' 11.720" N
P-230	85° 24' 55.746" E	23° 44' 14.355" N
P-231	85° 24' 53.992" E	23° 44' 15.748" N
P-232	85° 24' 52.383" E	23° 44' 17.451" N
P-233	85° 24' 50.323" E	23° 44' 19.491" N
P-234	85° 24' 49.620" E	23° 44' 20.150" N
P-235	85° 24' 48.323" E	23° 44' 21.184" N

Provisional Cardinal Points for Rabodih OCP Block

POINT NO	Longitude (WGS84)	Latitude (WGS84)
P-236	85° 24' 47.127" E	23° 44' 22.292" N
P-237	85° 24' 46.286" E	23° 44' 23.238" N
P-238	85° 24' 45.733" E	23° 44' 23.991" N
P-239	85° 24' 44.356" E	23° 44' 25.695" N
P-240	85° 24' 43.434" E	23° 44' 26.764" N
P-241	85° 24' 42.074" E	23° 44' 28.876" N
P-242	85° 24' 40.965" E	23° 44' 30.656" N
P-243	85° 24' 40.012" E	23° 44' 32.091" N
P-244	85° 24' 39.484" E	23° 44' 33.071" N
P-245	85° 24' 37.824" E	23° 44' 36.368" N
P-246	85° 24' 36.581" E	23° 44' 39.013" N
P-247	85° 24' 35.585" E	23° 44' 41.092" N
P-248	85° 24' 35.006" E	23° 44' 42.206" N