

## PARBATPUR CENTRAL COAL BLOCK SUMMARY

### PART A

Sr. No.	Features	Details
<b>1.</b>	<b>Location</b>	
	<b>Coal Block</b>	<b>Parbatpur Central</b>
	Latitude	23° 40' 15" N - 23° 42' 15" N (Provisional)
	Longitude	86° 19' 29" E - 86° 22' 12" E (Provisional)
	Topo Sheet No.	F45C1
	Coalfield	Jharia
	Villages	Parbatpur, Nayaban, Talgaria, Nawadi, Fatepur, Tilatanr, Karmatanr, Debgram, Kendulia, Amlabad
	Tehsil/Taluka	Chandankiyari
	District	Bokaro
	State	Jharhand
<b>2.</b>	<b>Connectivity with Block</b>	
	Nearest Rail Head	-
	Road	The block is about 60 km South-West of Dhanbad town and is about 25 km east of Bokaro Steel Plant. Within the block there are many fair weather village roads/cart tracks.
	Airport	-
<b>3.</b>	<b>Area</b>	
	Geological Block Area	8.95 sq.km. (As per shapefile, Please refer Note below)
	Forest Area	<1 %
	Non-Forest Area	Approx. 100% (As per FSI Map)
<b>4.</b>	<b>Climate and Topography</b>	
	Average Annual Rainfall	1197mm –1380mm
	Temperature (Min. — Max.)	5°C-48°C
	Local Surface Drainage Channels	Damodar river, which controls the main drainage of the block, flows towards east and south in a meandering channel with fairly high banks. The streams are mostly seasonal and dries up during winter and summer months.
	Rivers	Damodar river.

<b>5.</b>	<b>Exploration</b>				
	Status	Explored in Detail			
	Exploration Agency	CMPDI, Electrosteel			
	Total Number of Boreholes with meterage	143 Boreholes; 56153.80 m (As per Mining Plan)			
	Borehole Density	Approx. 16.25 Boreholes/sq.km.			
	General Dip of Seams	Generally 9°-12° towards west in the northern part and 15° towards NW-WNW in western and southern parts.			
	General Strike Direction	N-S in Northern Part, NE-SW, NNE-SSW & NW-SE in western part, E-W in Southern Part and NE-SW to E-W in Eastern Part.			
	Faults	Major faults-11 with throw ranging between 10-180m, Minor faults-7 (Interpretative) with throw ranging between 2-5m.			
<b>6.</b>	<b>Coal Seams &amp; Reserve (Assessed by CMPDI-231.228 MT, Re-assessed by Electrosteel-235.718 MT(Up to Seam-XV, Including 4.49 MT Open cast resources))</b>				
	Coal Seams	Thickness Range (m)	Depth Range (m)	Geological Reserve (MT)	Grade
	Local-18I	0.43-0.60		4.49	
	Local-18H	0.20-0.85			
	Local-18G	0.11-1.12			
	Local-18F	0.10-0.86			
	Local-18E	0.10-2.00			
	Local-18D	0.20-0.68			
	Local-18C	0.20-1.50			
	Local-18B	0.28-1.30			
	Local-18A	0.39-1.00			
	XVIII Top	0.98-5.30	20-520	22.376	SII-WIV
	XVIII-1	0.70-1.65			
	XVIII-2	0.10-1.64			
	XVIII-3	0.10-1.07			
	XVIII Bot	0.12-2.65	40-560	9.012	SI-WIV
	XVII	0.50-5.29	60-600	24.556	SI-WIV
	L1	0.17-1.28	130-600	1.586	SI-WIV
	L2	0.22-2.16	140-610	11.313	SI-UG
	XVI Top	0.63-3.70	150-715	23.037	SII-WIV
	XVI Bot	0.50-3.75	180-780	28.948	WI-UG
	XVA	0.13-2.53	260-810	8.306	SI-UG
	XV Top	2.03-7.00	420-700	5.676	SI-SII
	XV Bot	1.80-7.88	425-710	4.572	SII-WIII
	XV Comb	8.73-16.40	330-890	91.846	SI-WIII
	L3	0.57-5.46			
	L4	0.40-2.16			
	XIV	4.75-16.16			
	XIII Top	1.46-7.39			
	XIII Bot	2.54-5.20			
	XIII Comb	3.68-11.40			
	XII	5.18-11.02			

	XI	4.01-11.57			
	X	6.44-6.95			
	IX	2.13-3.07			
	IX/X	6.13-10.57			
	VIII C	1.42-6.73			
	VIII B	1.00-1.90			
	VIII A	0.75-3.04			
	VIII	4.02-6.43			
	V/VI/VIII	13.73-19.00			
	IV Top	2.09-2.55			
	IV Bot	6.13			
	III	26.59			
	III	5.9			
	I	2			
		<b>Total</b>		<b>235.718</b>	
<b>7.</b>	<b>Surface Constraints</b>	96% CBM overlap			
<b>8.</b>	<b>Grade of the block</b>	W-I (Provisional), ) based on weighted average grade as per grade-wise data available in GR.			
<b>9.</b>	<b>Decision Support System (DSS) Analysis</b>	Hydrology: The polygon touches major river-Damodar River.			
<b>10.</b>	<b>Eco Sensitive Zone (ESZ) Analysis</b>	The ESZ boundary of Parasnath is located Approx.20 km from the northern block boundary. The part of block (North-Western) is in the immediate vicinity of Damodar River.			
<b>11.</b>	<b>CBA Land Acquisition Status</b>	Information not available.			

## PART B

Sr. No.	Features	Details
<b>1.</b>	<b>Previous Allocation</b>	
	Name of Allocatee	Electrosteel Castings Ltd.
	Address	G.K.Tower, 19 Camac Street, Kolkata-700019, West Bengal
	Nature of End Use	Pig Iron and CPP
<b>2.</b>	<b>Status of Mineral Exploitation</b>	
	Method of Mining	Both opencast and underground Mining
	Coal Extracted	1.196 Million Tonne ( till 31.03.2015)
	Mine Plan Extraction Rate	1.24 MTPA
<b>3.</b>	<b>Status of Clearances/Approvals</b>	
	Mining Plan(Reference to Grant)	13016/34/2004-CA-1 (Part) dated 24/10/2011
	Forest Clearance (Reference to Grant)	-
	Environmental Clearance (Reference to Grant)	No. J-11015/236/2006-IA(M) dated 11-01-2007
	Mining Lease (Reference to Grant)	Dated 11.01.2008
	Land Required	Need Based
	Land Acquired	996.857 acres (as on 21.10.2014)
	R&R	-

**Note:**

1. The above data is compiled from Geological Report, Mining Plan and the data furnished by the prior allottee in Annexure-I/II, as available. For clarifications with regard to above data, please refer aforesaid source documents.
2. The boundary of the block has been taken from GR after conversion to WGS84 system by feature matching. The block boundary is provisional and the cardinal points, bounding co-ordinates are approximate.
3. There is a difference in area in the shape file and GR. Area in the shape file is based on feature mapped plan of the block as given in the GR. So, the area is tentative and field DGPS survey is required to ascertain the exact area.

**Disclaimer:**

1. The analysis is done on Beta-version (Trial Version) of Decision Support System (DSS) of FSI/ MOEF.
2. The Decision Rules for various parameters of this DSS System are controlled by FSI.
3. CMPDI only runs this DSS to obtain the status of any block based on these Decision Rules.
4. The database of the Decision Rules is updated by FSI from time to time.
5. CMPDI does not own any responsibility for variation in the results which are based on the decision Rules of the FSI DSS in case of any updation of the database at FSI end.
6. ESZ analysis and tiger habitat/ corridor given here is based on the information available in public domain. Bidders are encouraged to verify this information and any other information additionally available.

23°41'0"N

23°42'0"N

86°19'0"E

86°19'0"E

86°20'0"E

86°20'0"E

86°21'0"E

86°21'0"E

86°22'0"E

86°22'0"E

23°41'0"N

23°42'0"N

Parbatour Central Block, Jharia Coalfield

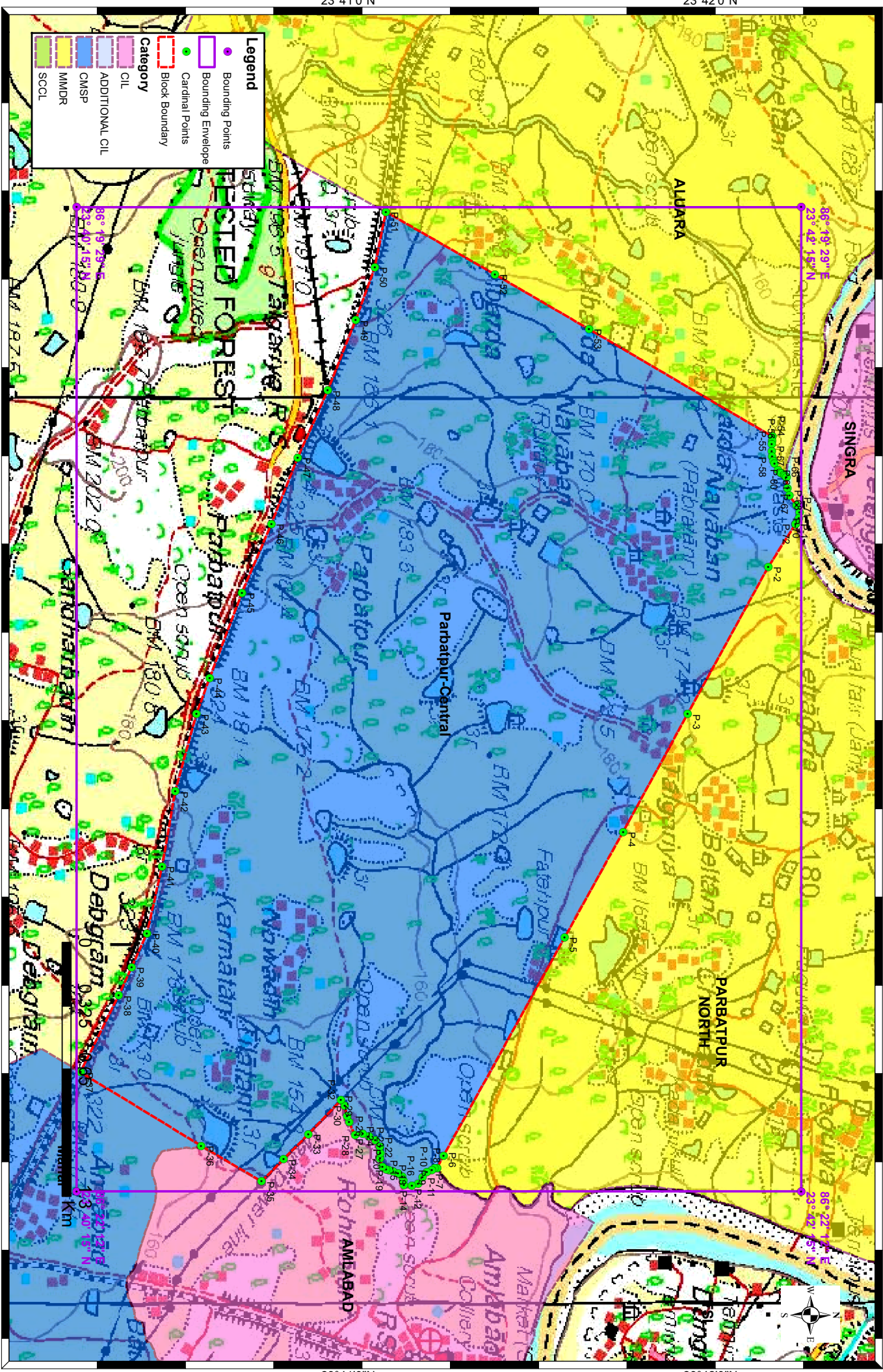
FOR INTERNAL/RESTRICTED USE ONLY

**Legend**

- Bounding Points
- Bounding Envelope
- Cardinal Points
- Block Boundary

**Category**

- CIL
- ADDITIONAL CIL
- CMSP
- MMDR
- SCCL



Note: Coordinates are in WGS84 datum.



**Provisional Cardinal Points for Parbatpur-Central Block**

POINT NO	Longitude (WGS84)	Latitude (WGS84)
P-1	86° 20' 21.424" E	23° 42' 14.082" N
P-2	86° 20' 28.544" E	23° 42' 9.554" N
P-3	86° 20' 52.931" E	23° 41' 56.173" N
P-4	86° 21' 12.453" E	23° 41' 45.488" N
P-5	86° 21' 29.948" E	23° 41' 35.826" N
P-6	86° 22' 6.095" E	23° 41' 15.764" N
P-7	86° 22' 8.163" E	23° 41' 14.694" N
P-8	86° 22' 8.205" E	23° 41' 14.251" N
P-9	86° 22' 8.436" E	23° 41' 13.840" N
P-10	86° 22' 8.830" E	23° 41' 13.026" N
P-11	86° 22' 9.695" E	23° 41' 12.284" N
P-12	86° 22' 10.744" E	23° 41' 11.567" N
P-13	86° 22' 11.009" E	23° 41' 10.538" N
P-14	86° 22' 10.952" E	23° 41' 9.187" N
P-15	86° 22' 10.222" E	23° 41' 9.094" N
P-16	86° 22' 9.496" E	23° 41' 8.917" N
P-17	86° 22' 8.982" E	23° 41' 8.215" N
P-18	86° 22' 8.729" E	23° 41' 7.411" N
P-19	86° 22' 8.496" E	23° 41' 6.734" N
P-20	86° 22' 8.376" E	23° 41' 6.298" N
P-21	86° 22' 7.885" E	23° 41' 5.628" N
P-22	86° 22' 6.499" E	23° 41' 5.262" N
P-23	86° 22' 5.638" E	23° 41' 5.327" N
P-24	86° 22' 4.584" E	23° 41' 5.211" N
P-25	86° 22' 3.569" E	23° 41' 4.492" N
P-26	86° 22' 2.875" E	23° 41' 3.412" N
P-27	86° 22' 2.438" E	23° 41' 2.376" N
P-28	86° 22' 2.669" E	23° 41' 1.125" N
P-29	86° 22' 0.528" E	23° 41' 0.122" N
P-30	86° 21' 59.521" E	23° 40' 59.779" N
P-31	86° 21' 57.851" E	23° 40' 59.405" N
P-32	86° 21' 56.878" E	23° 40' 58.774" N
P-33	86° 22' 2.551" E	23° 40' 53.365" N
P-34	86° 22' 6.684" E	23° 40' 49.274" N
P-35	86° 22' 10.356" E	23° 40' 45.636" N
P-36	86° 22' 4.447" E	23° 40' 35.649" N
P-37	86° 21' 52.260" E	23° 40' 15.676" N
P-38	86° 21' 39.557" E	23° 40' 21.984" N
P-39	86° 21' 34.859" E	23° 40' 24.143" N
P-40	86° 21' 29.240" E	23° 40' 26.678" N
P-41	86° 21' 18.207" E	23° 40' 29.145" N
P-42	86° 21' 5.743" E	23° 40' 31.355" N
P-43	86° 20' 52.928" E	23° 40' 34.850" N
P-44	86° 20' 46.966" E	23° 40' 37.043" N
P-45	86° 20' 32.850" E	23° 40' 42.388" N
P-46	86° 20' 21.434" E	23° 40' 47.259" N
P-47	86° 20' 10.469" E	23° 40' 51.628" N

### **Provisional Cardinal Points for Parbatpur-Central Block**

POINT NO	Longitude (WGS84)	Latitude (WGS84)
P-48	86° 19' 59.333" E	23° 40' 56.597" N
P-49	86° 19' 47.684" E	23° 41' 1.222" N
P-50	86° 19' 38.946" E	23° 41' 4.392" N
P-51	86° 19' 29.749" E	23° 41' 6.217" N
P-52	86° 19' 40.083" E	23° 41' 24.239" N
P-53	86° 19' 49.180" E	23° 41' 39.854" N
P-54	86° 20' 6.960" E	23° 42' 10.200" N
P-55	86° 20' 7.737" E	23° 42' 10.157" N
P-56	86° 20' 8.262" E	23° 42' 10.127" N
P-57	86° 20' 9.390" E	23° 42' 10.120" N
P-58	86° 20' 10.290" E	23° 42' 10.154" N
P-59	86° 20' 11.039" E	23° 42' 10.352" N
P-60	86° 20' 11.460" E	23° 42' 10.574" N
P-61	86° 20' 12.511" E	23° 42' 11.131" N
P-62	86° 20' 12.926" E	23° 42' 11.513" N
P-63	86° 20' 13.071" E	23° 42' 11.747" N
P-64	86° 20' 13.288" E	23° 42' 12.151" N
P-65	86° 20' 13.487" E	23° 42' 12.330" N
P-66	86° 20' 13.715" E	23° 42' 12.561" N
P-67	86° 20' 15.578" E	23° 42' 12.711" N
P-68	86° 20' 16.734" E	23° 42' 13.033" N
P-69	86° 20' 18.405" E	23° 42' 14.232" N
P-70	86° 20' 19.561" E	23° 42' 14.724" N
P-71	86° 20' 20.439" E	23° 42' 14.596" N

Cardinal points are extracted from the block boundary shapefile using ArcGIS software and are tentative. DGPS survey is required to ascertain the exact cardinal points.