

NUAGAON TELISAHİ COAL BLOCK SUMMARY

PART A

Sr. No	Features	Details
1. Location		
	Coal Block	Nuagaon Telisahi.
	Latitude	21° 5' 33" N - 21° 7' 35" N (Provisional)
	Longitude	84° 41' 45" E - 84° 45' 16" E (Provisional)
	Topo Sheet No.	73 C/12 & 73 C/16
	Coalfield	Talcher.
	Villages	Nuagaon, Telisahi, Jaripal, Budhapal, Marudipa, Karnpal.
	Tehsil/Taluka	Chhendipada
	District	Angul
	State	Odisha
2. Connectivity with Block		
	Nearest Rail Head	The nearest rail head Angul on Sambalpur-Bhubaneshwar broad gauge loop of Eastcoast Railway is about 55 km. from the block.
	Road	Nuagaon-Telisahi Coal block is well connected to district headquarter Angul via Chhendipada at a distance of 55 km by all-weather road. This block is located at a distance of 15 km from Chhendipada village. Cuttack-Sambalpur National Highway (NH-42) passes through the district headquarter Angul.
	Airport	
3. Area		
	Geological Block Area	15.4 sq.km. (As per shape file; Refer Note Below)
	Forest Area	Approx. 7 % (As per FSI plan)
	Non-Forest Area	Approx. 93 % (As per FSI plan)
4. Climate and Topography		
	Average Annual Rainfall	71 cm- 186 cm
	Temperature (Min. — Max.)	25°C to 45°C
	Local Surface Drainage Channels	The drainage in the block is mainly controlled by easterly flowing Aunli Nadi which flows along the south eastern to eastern margin of the block. Nuthurani Nala flowing along the north-western boundary of the block, joins Aunli Nadi in the northeast outside of the block. There are few seasonal nalas within the block, which ultimately join Aunli Nadi. In addition there are few ponds within the block. A few canals are present in the block for irrigation purpose.
	Rivers	Aunli
5. Exploration		
	Status	Explored
	Exploration Agency	MECL, GSI

	Total Number of Boreholes with meterage	128 Boreholes; 29912.30 m (MECL: 113 Boreholes, 25321.50 m and GSI: 15 Boreholes, 4590.8 m).			
	Borehole Density	Approx. 8.31 Boreholes/sq.km.			
	General Dip of Seams	The beds dip northerly 3° to 8°			
	General Strike Direction	The general strike of the beds is East – West with minor swings.			
6.	Coal Seams & Reserve				
	Coal Seams	Thickness Range (m)	Depth Range (m)	Geological Reserve (MT) (Proved)	Grade
	IX	0.67-5.98	16.99-43.17	5.253	F-G
	VIII	0.68-4.30	13.95-178.04	57.192	D-UG
	VII	0.07-1.97	22.18-182.56	1.112	E-G
	VI(TOP)	0.84-4.70	35.48-137.87	14.913	D-G
	VI(MID.)	2.81-10.6	41.97-147.00	61.869	F-G
	VI(TOP+MID.)	4.61-12.10	40.21-213.27	90.165	E-G
	VI BOT-B2	0.86-2.80	51.25-102.37	6.159	F-UG
	VI BOT-B1	0.89-2.38	54.87-105.02	6.724	F-G
	VI B(COMB.)	0.30-4.46	45.22-218.15	36.788	E-G
	VI (COMB.)	8.62-12.40	115.20-125.09	4.169	F-G
	III TOP-T2	0.46-6.75	62.23-254.70	20.115	D-G
	III TOP-T1	0.55-6.63	70.12-263.72	28.452	D-G
	III TOP(COMB.)	2.98-10.82	97.17-165.50	30.535	E-F
	III MID.	1.35-9.77	84.88-269.55	89.877	D-G
	LOCAL-1	0.14-2.56	105.67-286.56	10.638	D-G
	III BOT-B2	2.66-10.82	136.68-293.85	60.166	D-F
	III BOT-B1(TOP)	0.96-2.15	163.66-262.50	2.431	E-F
	III BOT B1(BOT)	1.25-4.16	166.82-266.98	3.306	E-F
	III BOT.B1(COMB)	2.12-10.16	148.60-317.17	69.09	E-G
	III BOT(COMB.)	8.6-16.64	132.66-195.33	116.415	E-G
	II TOP T2(TOP)	0.76-6.15	142.00-287.01	11.722	E-G
	II TOP T2(BOT)	1.40-5.43	146.59-289.47	9.427	E-F
	II TOP T2(COMB.)	1.30-10.21	156.07-338.6	100.33	E-G
	II TOP-T1	0.58-7.20	151.76-345.56	59.502	E-G
	II BOT B2	0.10-1.91	177.66-277.43		D-G
	II BOT B1	0.10-6.92	169.24-286.78	8.247	C-G
	I TOP	0.22-2.95	199.70-297.75		C
	I MID.	0.37-1.90	208.75-301.98		D
	I BOT	0.10-1.55	215.45-322.78		D
		Total		904.597	
7.	Surface Constraints	NA			
8.	Grade of the block	G11 (Provisional) based on weighted average grade as per data available in GR.			
9.	Decision Support System (DSS) Analysis	Hydrology info: Polygon touches Aunli Nadi Wildlife info: Polygon touches wildlife habitat of Sloth Bear & Dhole			
10.	Eco Sensitive Zone (ESZ) Analysis	Approx. 2 km to the Simlipal-Satkosia Tiger Corridor from the southern block boundary and 2.7 km to the Sambalpur Elephant Reserve from the Western block boundary and approx. 3 km from the boundary of ESZ of Mahandi Elephant Reserve.			

PART B

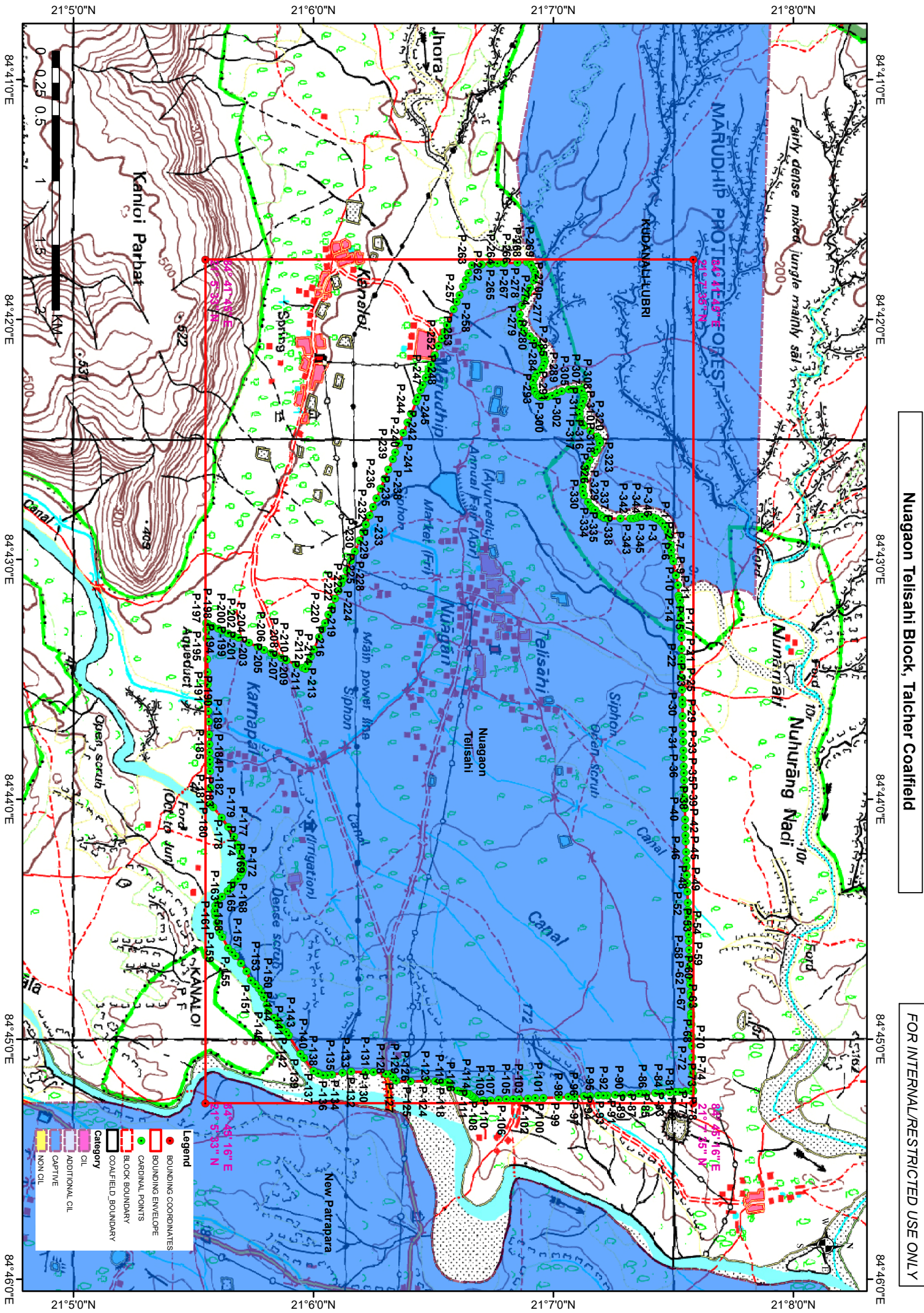
Sl. No.	Features	Details
1.	Previous Allocation	
	Name and Address of Allocatee	Odisha Mining Corporation, Andhra Pradesh Mineral Development Corporation (APMDC)
2.	Mine Capacity as per Mining Plan	(Mining Plan not available)
3.	Status of Clearances/Approvals	
	Mining Plan/ Mine Closure Plan	--
	Forest Clearance	--
	Environmental Clearance	--
	Mining Lease	--
	Land Acquisition	--
4.	No. of PAFs	--

Note:

1. The above data is compiled from Geological Report, Mining Plan and the data furnished by the prior allottee in Annexure-I/II, as available. For clarifications with regard to above data, please refer aforesaid source documents.
2. The boundary of the block has been taken from GR after conversion to WGS84 system by feature matching. The block boundary is provisional and the cardinal points, bounding co-ordinates are approximate.
3. There is a difference in area in the shape file and GR. Area in the shape file is based on feature mapped plan of the block as given in the GR. So, the area is tentative and field DGPS survey is required to ascertain the exact area.

Disclaimer:

1. The analysis is done on Beta-version (Trial Version) of Decision Support System (DSS) of FSI / MOEF.
2. The Decision Rules for various parameters of this DSS System are controlled by FSI.
3. CMPDI only runs this DSS to obtain the status of any block based on these Decision Rules.
4. The database of the Decision Rules is updated by FSI from time to time.
5. CMPDI does not own any responsibility for variation in the results which are based on the Decision Rules of the FSI DSS in case of any updation of the database at FSI end.
6. ESZ analysis and tiger habitat/ corridor given here is based on the information available in public domain. Bidders are encouraged to verify this information and any other information additionally available.



Nugaon Teilsahi Block, Talcher Coalfield

FOR INTERNAL/RESTRICTED USE ONLY

- Legend**
- BOUNDING COORDINATES
 - BOUNDING ENVELOPE
 - CARDINAL POINTS
 - BLOCK BOUNDARY
 - COALFIELD BOUNDARY
- Category**
- OIL
 - ADDITIONAL OIL
 - CAPTIVE
 - NON OIL

Provisional Cardinal Points for Nuagaon Telisahi Block

POINT NO	Longitude (WGS84)	Latitude (WGS84)
P-1	84° 42' 49.827" E	21° 7' 25.747" N
P-2	84° 42' 50.449" E	21° 7' 26.655" N
P-3	84° 42' 51.017" E	21° 7' 27.286" N
P-4	84° 42' 51.869" E	21° 7' 27.912" N
P-5	84° 42' 53.192" E	21° 7' 28.577" N
P-6	84° 42' 54.369" E	21° 7' 29.027" N
P-7	84° 42' 56.296" E	21° 7' 29.337" N
P-8	84° 42' 57.718" E	21° 7' 29.442" N
P-9	84° 42' 59.167" E	21° 7' 29.528" N
P-10	84° 43' 0.568" E	21° 7' 30.005" N
P-11	84° 43' 3.973" E	21° 7' 30.665" N
P-12	84° 43' 6.465" E	21° 7' 31.144" N
P-13	84° 43' 9.029" E	21° 7' 31.322" N
P-14	84° 43' 9.635" E	21° 7' 31.439" N
P-15	84° 43' 10.241" E	21° 7' 31.716" N
P-16	84° 43' 11.794" E	21° 7' 31.773" N
P-17	84° 43' 13.607" E	21° 7' 31.813" N
P-18	84° 43' 14.747" E	21° 7' 31.848" N
P-19	84° 43' 16.586" E	21° 7' 31.942" N
P-20	84° 43' 17.883" E	21° 7' 32.021" N
P-21	84° 43' 19.617" E	21° 7' 32.032" N
P-22	84° 43' 22.412" E	21° 7' 32.061" N
P-23	84° 43' 24.567" E	21° 7' 32.065" N
P-24	84° 43' 25.459" E	21° 7' 32.058" N
P-25	84° 43' 27.022" E	21° 7' 32.126" N
P-26	84° 43' 29.518" E	21° 7' 32.144" N
P-27	84° 43' 32.631" E	21° 7' 32.189" N
P-28	84° 43' 35.047" E	21° 7' 32.270" N
P-29	84° 43' 36.303" E	21° 7' 32.295" N
P-30	84° 43' 39.233" E	21° 7' 32.295" N
P-31	84° 43' 41.539" E	21° 7' 32.326" N
P-32	84° 43' 43.609" E	21° 7' 32.388" N
P-33	84° 43' 45.670" E	21° 7' 32.453" N
P-34	84° 43' 47.779" E	21° 7' 32.495" N
P-35	84° 43' 49.598" E	21° 7' 32.538" N
P-36	84° 43' 51.683" E	21° 7' 32.564" N
P-37	84° 43' 53.459" E	21° 7' 32.631" N
P-38	84° 43' 55.304" E	21° 7' 32.662" N
P-39	84° 43' 57.314" E	21° 7' 32.701" N
P-40	84° 43' 59.379" E	21° 7' 32.740" N
P-41	84° 44' 0.245" E	21° 7' 32.775" N
P-42	84° 44' 2.312" E	21° 7' 32.867" N
P-43	84° 44' 5.004" E	21° 7' 32.948" N
P-44	84° 44' 7.022" E	21° 7' 33.015" N
P-45	84° 44' 9.058" E	21° 7' 33.048" N
P-46	84° 44' 10.610" E	21° 7' 33.100" N
P-47	84° 44' 13.092" E	21° 7' 33.204" N

Provisional Cardinal Points for Nuagaon Telisahi Block

POINT NO	Longitude (WGS84)	Latitude (WGS84)
P-48	84° 44' 15.156" E	21° 7' 33.267" N
P-49	84° 44' 16.863" E	21° 7' 33.289" N
P-50	84° 44' 18.921" E	21° 7' 33.360" N
P-51	84° 44' 21.004" E	21° 7' 33.456" N
P-52	84° 44' 23.089" E	21° 7' 33.517" N
P-53	84° 44' 25.868" E	21° 7' 33.592" N
P-54	84° 44' 27.762" E	21° 7' 33.630" N
P-55	84° 44' 28.193" E	21° 7' 33.643" N
P-56	84° 44' 29.350" E	21° 7' 33.696" N
P-57	84° 44' 31.421" E	21° 7' 33.768" N
P-58	84° 44' 33.869" E	21° 7' 33.848" N
P-59	84° 44' 35.531" E	21° 7' 33.888" N
P-60	84° 44' 37.615" E	21° 7' 33.938" N
P-61	84° 44' 39.677" E	21° 7' 34.014" N
P-62	84° 44' 41.789" E	21° 7' 34.057" N
P-63	84° 44' 44.934" E	21° 7' 34.146" N
P-64	84° 44' 46.426" E	21° 7' 34.181" N
P-65	84° 44' 48.276" E	21° 7' 34.305" N
P-66	84° 44' 49.205" E	21° 7' 34.356" N
P-67	84° 44' 51.413" E	21° 7' 34.395" N
P-68	84° 44' 53.564" E	21° 7' 34.431" N
P-69	84° 44' 54.240" E	21° 7' 34.456" N
P-70	84° 44' 56.322" E	21° 7' 34.504" N
P-71	84° 44' 59.231" E	21° 7' 34.578" N
P-72	84° 45' 1.672" E	21° 7' 34.638" N
P-73	84° 45' 4.650" E	21° 7' 34.716" N
P-74	84° 45' 7.129" E	21° 7' 34.780" N
P-75	84° 45' 8.755" E	21° 7' 34.805" N
P-76	84° 45' 11.098" E	21° 7' 34.862" N
P-77	84° 45' 12.887" E	21° 7' 34.905" N
P-78	84° 45' 12.980" E	21° 7' 34.908" N
P-79	84° 45' 12.974" E	21° 7' 34.480" N
P-80	84° 45' 13.054" E	21° 7' 33.005" N
P-81	84° 45' 13.143" E	21° 7' 31.522" N
P-82	84° 45' 13.188" E	21° 7' 30.543" N
P-83	84° 45' 13.305" E	21° 7' 29.096" N
P-84	84° 45' 13.405" E	21° 7' 27.150" N
P-85	84° 45' 13.487" E	21° 7' 25.517" N
P-86	84° 45' 13.538" E	21° 7' 23.241" N
P-87	84° 45' 13.570" E	21° 7' 22.117" N
P-88	84° 45' 13.620" E	21° 7' 21.288" N
P-89	84° 45' 13.736" E	21° 7' 19.342" N
P-90	84° 45' 13.829" E	21° 7' 17.396" N
P-91	84° 45' 13.873" E	21° 7' 15.455" N
P-92	84° 45' 13.977" E	21° 7' 13.510" N
P-93	84° 45' 14.053" E	21° 7' 12.558" N
P-94	84° 45' 14.110" E	21° 7' 11.206" N

Provisional Cardinal Points for Nuagaon Telisahi Block

POINT NO	Longitude (WGS84)	Latitude (WGS84)
P-95	84° 45' 14.152" E	21° 7' 9.198" N
P-96	84° 45' 14.202" E	21° 7' 7.640" N
P-97	84° 45' 14.333" E	21° 7' 5.279" N
P-98	84° 45' 14.410" E	21° 7' 3.759" N
P-99	84° 45' 14.527" E	21° 7' 1.350" N
P-100	84° 45' 14.649" E	21° 6' 57.527" N
P-101	84° 45' 14.716" E	21° 6' 55.479" N
P-102	84° 45' 14.816" E	21° 6' 53.679" N
P-103	84° 45' 14.919" E	21° 6' 51.470" N
P-104	84° 45' 14.995" E	21° 6' 49.970" N
P-105	84° 45' 15.019" E	21° 6' 48.237" N
P-106	84° 45' 15.149" E	21° 6' 46.287" N
P-107	84° 45' 15.237" E	21° 6' 44.317" N
P-108	84° 45' 15.329" E	21° 6' 42.374" N
P-109	84° 45' 15.382" E	21° 6' 40.946" N
P-110	84° 45' 14.861" E	21° 6' 40.356" N
P-111	84° 45' 14.377" E	21° 6' 39.853" N
P-112	84° 45' 14.154" E	21° 6' 39.587" N
P-113	84° 45' 13.776" E	21° 6' 39.010" N
P-114	84° 45' 13.605" E	21° 6' 38.320" N
P-115	84° 45' 13.348" E	21° 6' 37.576" N
P-116	84° 45' 13.106" E	21° 6' 36.820" N
P-117	84° 45' 12.856" E	21° 6' 36.006" N
P-118	84° 45' 12.003" E	21° 6' 34.202" N
P-119	84° 45' 11.263" E	21° 6' 34.012" N
P-120	84° 45' 10.869" E	21° 6' 33.847" N
P-121	84° 45' 10.669" E	21° 6' 33.543" N
P-122	84° 45' 10.810" E	21° 6' 32.351" N
P-123	84° 45' 10.513" E	21° 6' 30.450" N
P-124	84° 45' 10.447" E	21° 6' 28.345" N
P-125	84° 45' 10.514" E	21° 6' 24.287" N
P-126	84° 45' 10.462" E	21° 6' 20.674" N
P-127	84° 45' 9.478" E	21° 6' 19.927" N
P-128	84° 45' 8.702" E	21° 6' 19.235" N
P-129	84° 45' 8.636" E	21° 6' 18.095" N
P-130	84° 45' 8.278" E	21° 6' 15.040" N
P-131	84° 45' 8.208" E	21° 6' 13.061" N
P-132	84° 45' 8.101" E	21° 6' 9.444" N
P-133	84° 45' 8.387" E	21° 6' 7.293" N
P-134	84° 45' 8.847" E	21° 6' 4.629" N
P-135	84° 45' 8.990" E	21° 6' 3.483" N
P-136	84° 45' 8.955" E	21° 6' 2.449" N
P-137	84° 45' 8.530" E	21° 6' 1.193" N
P-138	84° 45' 7.987" E	21° 6' 0.022" N
P-139	84° 45' 4.780" E	21° 5' 57.663" N
P-140	84° 45' 3.670" E	21° 5' 56.745" N
P-141	84° 44' 59.145" E	21° 5' 53.856" N

Provisional Cardinal Points for Nuagaon Telisahi Block

POINT NO	Longitude (WGS84)	Latitude (WGS84)
P-142	84° 44' 58.210" E	21° 5' 53.204" N
P-143	84° 44' 57.007" E	21° 5' 52.060" N
P-144	84° 44' 55.566" E	21° 5' 51.086" N
P-145	84° 44' 54.574" E	21° 5' 50.166" N
P-146	84° 44' 52.952" E	21° 5' 48.744" N
P-147	84° 44' 51.490" E	21° 5' 48.332" N
P-148	84° 44' 49.510" E	21° 5' 47.640" N
P-149	84° 44' 48.341" E	21° 5' 47.083" N
P-150	84° 44' 47.288" E	21° 5' 46.358" N
P-151	84° 44' 46.264" E	21° 5' 45.435" N
P-152	84° 44' 45.329" E	21° 5' 44.344" N
P-153	84° 44' 43.075" E	21° 5' 43.259" N
P-154	84° 44' 41.060" E	21° 5' 41.893" N
P-155	84° 44' 39.199" E	21° 5' 40.548" N
P-156	84° 44' 38.200" E	21° 5' 39.660" N
P-157	84° 44' 37.203" E	21° 5' 38.678" N
P-158	84° 44' 34.369" E	21° 5' 37.199" N
P-159	84° 44' 33.163" E	21° 5' 36.500" N
P-160	84° 44' 30.876" E	21° 5' 35.891" N
P-161	84° 44' 29.100" E	21° 5' 35.477" N
P-162	84° 44' 27.927" E	21° 5' 35.314" N
P-163	84° 44' 26.606" E	21° 5' 35.489" N
P-164	84° 44' 25.587" E	21° 5' 36.057" N
P-165	84° 44' 24.331" E	21° 5' 37.190" N
P-166	84° 44' 22.925" E	21° 5' 38.549" N
P-167	84° 44' 22.148" E	21° 5' 39.341" N
P-168	84° 44' 20.816" E	21° 5' 40.100" N
P-169	84° 44' 19.858" E	21° 5' 41.120" N
P-170	84° 44' 18.929" E	21° 5' 41.774" N
P-171	84° 44' 18.178" E	21° 5' 42.172" N
P-172	84° 44' 17.427" E	21° 5' 42.401" N
P-173	84° 44' 16.103" E	21° 5' 42.408" N
P-174	84° 44' 14.200" E	21° 5' 42.036" N
P-175	84° 44' 12.868" E	21° 5' 41.622" N
P-176	84° 44' 11.252" E	21° 5' 41.017" N
P-177	84° 44' 9.340" E	21° 5' 40.155" N
P-178	84° 44' 6.887" E	21° 5' 38.700" N
P-179	84° 44' 4.580" E	21° 5' 37.060" N
P-180	84° 44' 1.976" E	21° 5' 34.964" N
P-181	84° 44' 1.307" E	21° 5' 34.188" N
P-182	84° 43' 57.150" E	21° 5' 34.180" N
P-183	84° 43' 52.992" E	21° 5' 34.172" N
P-184	84° 43' 51.245" E	21° 5' 34.110" N
P-185	84° 43' 50.004" E	21° 5' 34.077" N
P-186	84° 43' 48.244" E	21° 5' 34.037" N
P-187	84° 43' 46.251" E	21° 5' 33.988" N
P-188	84° 43' 43.824" E	21° 5' 33.939" N

Provisional Cardinal Points for Nuagaon Telisahi Block

POINT NO	Longitude (WGS84)	Latitude (WGS84)
P-189	84° 43' 40.606" E	21° 5' 33.836" N
P-190	84° 43' 38.026" E	21° 5' 33.747" N
P-191	84° 43' 35.616" E	21° 5' 33.694" N
P-192	84° 43' 31.256" E	21° 5' 33.567" N
P-193	84° 43' 28.178" E	21° 5' 33.493" N
P-194	84° 43' 24.940" E	21° 5' 33.421" N
P-195	84° 43' 19.705" E	21° 5' 33.281" N
P-196	84° 43' 17.603" E	21° 5' 33.237" N
P-197	84° 43' 15.955" E	21° 5' 33.198" N
P-198	84° 43' 16.132" E	21° 5' 33.596" N
P-199	84° 43' 16.658" E	21° 5' 34.766" N
P-200	84° 43' 17.355" E	21° 5' 36.214" N
P-201	84° 43' 17.779" E	21° 5' 37.145" N
P-202	84° 43' 18.497" E	21° 5' 38.705" N
P-203	84° 43' 19.115" E	21° 5' 40.072" N
P-204	84° 43' 19.658" E	21° 5' 41.242" N
P-205	84° 43' 20.883" E	21° 5' 43.881" N
P-206	84° 43' 21.931" E	21° 5' 46.142" N
P-207	84° 43' 22.636" E	21° 5' 47.651" N
P-208	84° 43' 23.443" E	21° 5' 49.427" N
P-209	84° 43' 23.832" E	21° 5' 50.254" N
P-210	84° 43' 24.628" E	21° 5' 51.990" N
P-211	84° 43' 25.217" E	21° 5' 53.247" N
P-212	84° 43' 26.316" E	21° 5' 55.659" N
P-213	84° 43' 27.076" E	21° 5' 57.294" N
P-214	84° 43' 27.410" E	21° 5' 58.024" N
P-215	84° 43' 26.152" E	21° 5' 58.575" N
P-216	84° 43' 24.317" E	21° 5' 59.337" N
P-217	84° 43' 22.541" E	21° 6' 0.089" N
P-218	84° 43' 19.425" E	21° 6' 1.401" N
P-219	84° 43' 17.514" E	21° 6' 2.218" N
P-220	84° 43' 15.883" E	21° 6' 2.894" N
P-221	84° 43' 13.837" E	21° 6' 3.737" N
P-222	84° 43' 11.773" E	21° 6' 4.608" N
P-223	84° 43' 9.857" E	21° 6' 5.408" N
P-224	84° 43' 7.766" E	21° 6' 6.274" N
P-225	84° 43' 6.067" E	21° 6' 6.983" N
P-226	84° 43' 4.785" E	21° 6' 7.519" N
P-227	84° 43' 2.849" E	21° 6' 8.315" N
P-228	84° 43' 0.368" E	21° 6' 9.361" N
P-229	84° 42' 57.993" E	21° 6' 10.344" N
P-230	84° 42' 55.286" E	21° 6' 11.506" N
P-231	84° 42' 53.138" E	21° 6' 12.405" N
P-232	84° 42' 51.334" E	21° 6' 13.131" N
P-233	84° 42' 48.966" E	21° 6' 14.064" N
P-234	84° 42' 46.870" E	21° 6' 14.907" N
P-235	84° 42' 44.744" E	21° 6' 15.758" N

Provisional Cardinal Points for Nuagaon Telisahi Block

POINT NO	Longitude (WGS84)	Latitude (WGS84)
P-236	84° 42' 42.299" E	21° 6' 16.780" N
P-237	84° 42' 39.822" E	21° 6' 17.792" N
P-238	84° 42' 37.577" E	21° 6' 18.726" N
P-239	84° 42' 34.897" E	21° 6' 19.824" N
P-240	84° 42' 33.286" E	21° 6' 20.474" N
P-241	84° 42' 31.010" E	21° 6' 21.381" N
P-242	84° 42' 28.331" E	21° 6' 22.489" N
P-243	84° 42' 25.831" E	21° 6' 23.522" N
P-244	84° 42' 23.670" E	21° 6' 24.383" N
P-245	84° 42' 20.570" E	21° 6' 25.645" N
P-246	84° 42' 19.462" E	21° 6' 26.094" N
P-247	84° 42' 17.655" E	21° 6' 26.816" N
P-248	84° 42' 16.467" E	21° 6' 27.311" N
P-249	84° 42' 14.541" E	21° 6' 28.081" N
P-250	84° 42' 12.824" E	21° 6' 28.783" N
P-251	84° 42' 11.299" E	21° 6' 29.394" N
P-252	84° 42' 8.925" E	21° 6' 30.377" N
P-253	84° 42' 6.666" E	21° 6' 31.317" N
P-254	84° 42' 4.825" E	21° 6' 32.086" N
P-255	84° 42' 3.028" E	21° 6' 32.800" N
P-256	84° 42' 1.419" E	21° 6' 33.430" N
P-257	84° 41' 57.370" E	21° 6' 35.083" N
P-258	84° 41' 55.614" E	21° 6' 35.810" N
P-259	84° 41' 53.854" E	21° 6' 36.533" N
P-260	84° 41' 51.750" E	21° 6' 37.409" N
P-261	84° 41' 50.123" E	21° 6' 38.109" N
P-262	84° 41' 48.427" E	21° 6' 38.791" N
P-263	84° 41' 46.353" E	21° 6' 39.656" N
P-264	84° 41' 46.238" E	21° 6' 42.085" N
P-265	84° 41' 46.121" E	21° 6' 44.321" N
P-266	84° 41' 46.026" E	21° 6' 46.017" N
P-267	84° 41' 45.941" E	21° 6' 47.682" N
P-268	84° 41' 45.754" E	21° 6' 51.010" N
P-269	84° 41' 45.629" E	21° 6' 53.413" N
P-270	84° 41' 45.592" E	21° 6' 54.084" N
P-271	84° 41' 46.474" E	21° 6' 54.476" N
P-272	84° 41' 47.430" E	21° 6' 55.023" N
P-273	84° 41' 48.350" E	21° 6' 55.500" N
P-274	84° 41' 48.845" E	21° 6' 55.515" N
P-275	84° 41' 50.310" E	21° 6' 55.079" N
P-276	84° 41' 52.157" E	21° 6' 54.193" N
P-277	84° 41' 53.255" E	21° 6' 53.654" N
P-278	84° 41' 54.645" E	21° 6' 52.874" N
P-279	84° 41' 56.474" E	21° 6' 52.109" N
P-280	84° 41' 58.723" E	21° 6' 51.574" N
P-281	84° 42' 0.397" E	21° 6' 51.674" N
P-282	84° 42' 1.430" E	21° 6' 51.949" N

Provisional Cardinal Points for Nuagaon Telisahi Block

POINT NO	Longitude (WGS84)	Latitude (WGS84)
P-283	84° 42' 2.809" E	21° 6' 52.674" N
P-284	84° 42' 4.145" E	21° 6' 54.087" N
P-285	84° 42' 5.329" E	21° 6' 55.206" N
P-286	84° 42' 6.469" E	21° 6' 56.255" N
P-287	84° 42' 7.449" E	21° 6' 56.975" N
P-288	84° 42' 8.884" E	21° 6' 57.506" N
P-289	84° 42' 9.997" E	21° 6' 57.792" N
P-290	84° 42' 10.639" E	21° 6' 57.821" N
P-291	84° 42' 11.521" E	21° 6' 57.570" N
P-292	84° 42' 12.428" E	21° 6' 57.024" N
P-293	84° 42' 13.477" E	21° 6' 55.922" N
P-294	84° 42' 14.402" E	21° 6' 55.337" N
P-295	84° 42' 15.237" E	21° 6' 54.989" N
P-296	84° 42' 16.348" E	21° 6' 54.877" N
P-297	84° 42' 17.186" E	21° 6' 55.088" N
P-298	84° 42' 18.102" E	21° 6' 55.376" N
P-299	84° 42' 18.806" E	21° 6' 55.889" N
P-300	84° 42' 19.332" E	21° 6' 56.532" N
P-301	84° 42' 19.413" E	21° 6' 57.124" N
P-302	84° 42' 19.384" E	21° 6' 58.532" N
P-303	84° 42' 18.963" E	21° 6' 59.709" N
P-304	84° 42' 18.337" E	21° 7' 0.886" N
P-305	84° 42' 17.889" E	21° 7' 2.075" N
P-306	84° 42' 17.552" E	21° 7' 3.862" N
P-307	84° 42' 17.466" E	21° 7' 4.955" N
P-308	84° 42' 17.459" E	21° 7' 6.250" N
P-309	84° 42' 17.528" E	21° 7' 6.459" N
P-310	84° 42' 17.711" E	21° 7' 7.049" N
P-311	84° 42' 18.841" E	21° 7' 7.595" N
P-312	84° 42' 19.575" E	21° 7' 7.660" N
P-313	84° 42' 20.381" E	21° 7' 7.433" N
P-314	84° 42' 21.607" E	21° 7' 7.014" N
P-315	84° 42' 22.577" E	21° 7' 6.528" N
P-316	84° 42' 23.567" E	21° 7' 6.575" N
P-317	84° 42' 24.943" E	21° 7' 6.655" N
P-318	84° 42' 25.752" E	21° 7' 7.013" N
P-319	84° 42' 26.580" E	21° 7' 7.680" N
P-320	84° 42' 27.854" E	21° 7' 9.309" N
P-321	84° 42' 29.267" E	21° 7' 10.878" N
P-322	84° 42' 30.014" E	21° 7' 11.445" N
P-323	84° 42' 30.543" E	21° 7' 11.604" N
P-324	84° 42' 31.024" E	21° 7' 11.602" N
P-325	84° 42' 32.442" E	21° 7' 10.982" N
P-326	84° 42' 33.355" E	21° 7' 10.311" N
P-327	84° 42' 35.307" E	21° 7' 9.072" N
P-328	84° 42' 36.541" E	21° 7' 8.389" N
P-329	84° 42' 37.651" E	21° 7' 7.986" N

Provisional Cardinal Points for Nuagaon Telisahi Block

POINT NO	Longitude (WGS84)	Latitude (WGS84)
P-330	84° 42' 39.884" E	21° 7' 7.718" N
P-331	84° 42' 41.881" E	21° 7' 7.375" N
P-332	84° 42' 42.912" E	21° 7' 7.328" N
P-333	84° 42' 43.888" E	21° 7' 7.646" N
P-334	84° 42' 45.624" E	21° 7' 8.649" N
P-335	84° 42' 46.751" E	21° 7' 9.310" N
P-336	84° 42' 47.257" E	21° 7' 9.814" N
P-337	84° 42' 47.651" E	21° 7' 10.479" N
P-338	84° 42' 48.779" E	21° 7' 11.495" N
P-339	84° 42' 49.181" E	21° 7' 11.988" N
P-340	84° 42' 49.524" E	21° 7' 12.735" N
P-341	84° 42' 49.737" E	21° 7' 13.756" N
P-342	84° 42' 49.807" E	21° 7' 16.765" N
P-343	84° 42' 49.806" E	21° 7' 19.222" N
P-344	84° 42' 49.791" E	21° 7' 20.012" N
P-345	84° 42' 49.621" E	21° 7' 20.925" N
P-346	84° 42' 49.312" E	21° 7' 21.340" N
P-347	84° 42' 49.284" E	21° 7' 22.120" N
P-348	84° 42' 49.280" E	21° 7' 22.130" N
P-349	84° 42' 49.326" E	21° 7' 23.457" N
P-350	84° 42' 49.447" E	21° 7' 24.943" N