

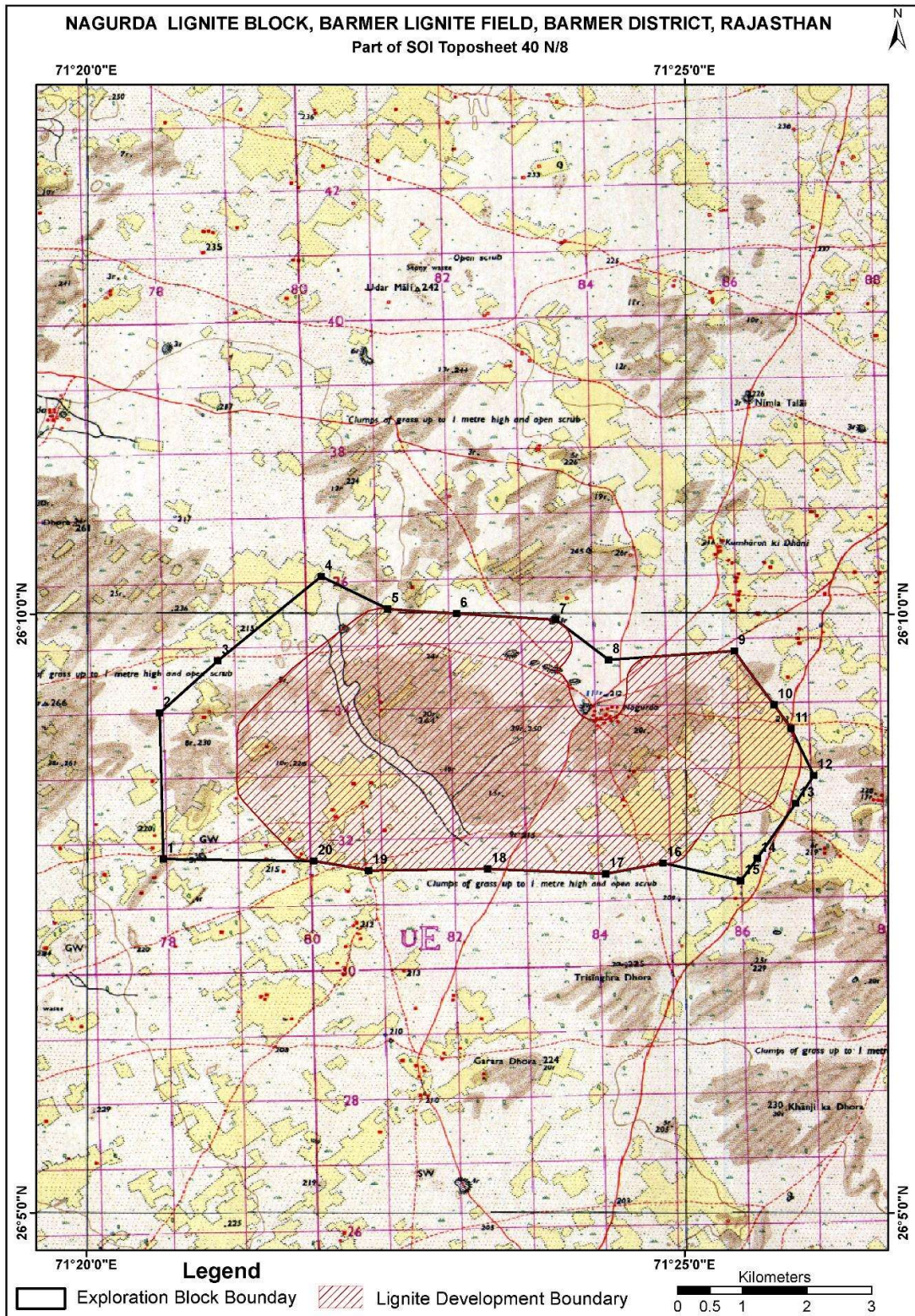
Nagurda Lignite Block Summary

Sr.No.	Features	Details
1	Location	
	Lignite Block	Nagurda
	Latitude	Latitude (N) : 26° 07' 42" - 26° 15' 00"
	Longitude	Longitude (E) : 71° 16' 17" - 71° 26' 12"
	Topo Sheet No.	40 N/8
	Lignite Field	Barmer Lignite Field
	Villages	Nagurda
	Tehsil/Taluka	Barmer
	District	Barmer
	State	Rajasthan
2	Connectivity with Block	
	Nearest Rail Head	Barmer
	Road	Nagurda block is about 52 Km. north of Barmer Town. The block is approachable from Barmer, via Barmer-Jaisalmer Highway No.15 upto Nimbala village (40 kms, approx.). From Nimbala the block can be approached by Nimbala-Nagurda-Mokhale unmetalled road and Nimbala-Nimbasar-Balai-Pusad unmetalled road. Both these roads traverse the block in the south-east and western part respectively.
	Airport	Jaisalmer
3	Area	
	Geological Block Area (After re-blocking)	31.3 Sq.km
	Forest Area	No forest as per topo sheet
	Non-Forest Area	31.3 Sq.km
4	Climate and Topography	
	Average Annual Rainfall	230 mm.
	Temperature (Min.- Max. in°C)	5 to 48
	Local Surface Drainage Channels	The area is devoid of any drainage pattern. Local nalas fed by rain water die out at very short distance due to sandy nature of the area. Few rain fed ponds/talai in the block are used for drinking/ irrigation purpose. These ponds/talai get dried up during summer.
	Rivers	Nil
5	Exploration	
	Status	Regional Exploration carried out on 1600 and 800m grid.
	Exploration Agency	Mineral Exploration Corporation Ltd., (MECL)
	Explored Area (as per GR)	87 Sq. km (Appx.) as per GR.
	Total Number of Boreholes with metreage	45 boreholes & 11008.2meters.

	Borehole Density	1.7																										
	General Dip of Seams	S-SE & it varies from 1.9° to 4.8°.																										
	General Strike Direction	ENE-WSW with local undulations and warping																										
	Faults	Devoid of fault																										
	Depth range of Lignite seam	55.80 to 239.8 m																										
6	Lignite Reserve: Indicated category																											
	<table border="1"> <thead> <tr> <th rowspan="2">Sector No.</th> <th colspan="4">Gross Reserves (in MT)</th> </tr> <tr> <th>Horizon-I</th> <th>Horizon-II</th> <th>Horizon-III</th> <th>Total</th> </tr> </thead> <tbody> <tr> <td>III</td> <td>146.098</td> <td>19.413</td> <td>37.482</td> <td>202.993</td> </tr> <tr> <td>IV</td> <td>2.478</td> <td>-</td> <td>-</td> <td>2.478</td> </tr> <tr> <td>Total</td> <td>148.576</td> <td>19.413</td> <td>37.482</td> <td>205.471</td> </tr> </tbody> </table>				Sector No.	Gross Reserves (in MT)				Horizon-I	Horizon-II	Horizon-III	Total	III	146.098	19.413	37.482	202.993	IV	2.478	-	-	2.478	Total	148.576	19.413	37.482	205.471
Sector No.	Gross Reserves (in MT)																											
	Horizon-I	Horizon-II	Horizon-III	Total																								
III	146.098	19.413	37.482	202.993																								
IV	2.478	-	-	2.478																								
Total	148.576	19.413	37.482	205.471																								
7	Surface Constraints	-																										
8	Grade of Lignite	G15, G16,G17 (Provisional). Based on Grade wise data available in GR																										
9	Decision Support System (DSS) Analysis	The polygon touches wildlife habitat(s)-Great Indian Bustard.																										
10	Eco Sensitive Zone (ESZ)	Desert National Park is at about 60Km in the West direction from the block.																										
11	Remarks	Regional Exploration carried out on 1600 and 800m grid. Geological Report available.																										

Note:

1. The summary has been compiled from "Geological Report on Exploration for Lignite, Nagurda Block, Barmer District, Rajasthan-March 2005, prepared by Mineral Exploration Corporation Ltd., Nagpur.
2. The Exploration block area mentioned above is as given in the Geological report, which may vary after DGPS survey.



**Provisional cardinal Points for Nagurda Lignite Block, Barmer District,
Rajasthan.**

Boundary Points	Latitude (DMS)	Longitude (DMS)
1	26° 7' 57.145" N	71° 20' 38.621" E
2	26° 9' 10.474" N	71° 20' 36.768" E
3	26° 9' 36.555" N	71° 21' 5.938" E
4	26° 10' 18.936" N	71° 21' 57.761" E
5	26° 10' 2.596" N	71° 22' 31.074" E
6	26° 10' 0.317" N	71° 23' 5.651" E
7	26° 9' 57.133" N	71° 23' 55.281" E
8	26° 9' 37.098" N	71° 24' 21.858" E
9	26° 9' 41.531" N	71° 25' 24.841" E
10	26° 9' 14.509" N	71° 25' 44.785" E
11	26° 9' 2.691" N	71° 25' 53.360" E
12	26° 8' 39.159" N	71° 26' 4.596" E
13	26° 8' 25.212" N	71° 25' 55.633" E
14	26° 7' 57.532" N	71° 25' 36.343" E
15	26° 7' 46.287" N	71° 25' 28.146" E
16	26° 7' 55.173" N	71° 24' 49.127" E
17	26° 7' 49.846" N	71° 24' 20.390" E
18	26° 7' 52.290" N	71° 23' 21.309" E
19	26° 7' 51.444" N	71° 22' 21.603" E
20	26° 7' 56.262" N	71° 21' 54.125" E