

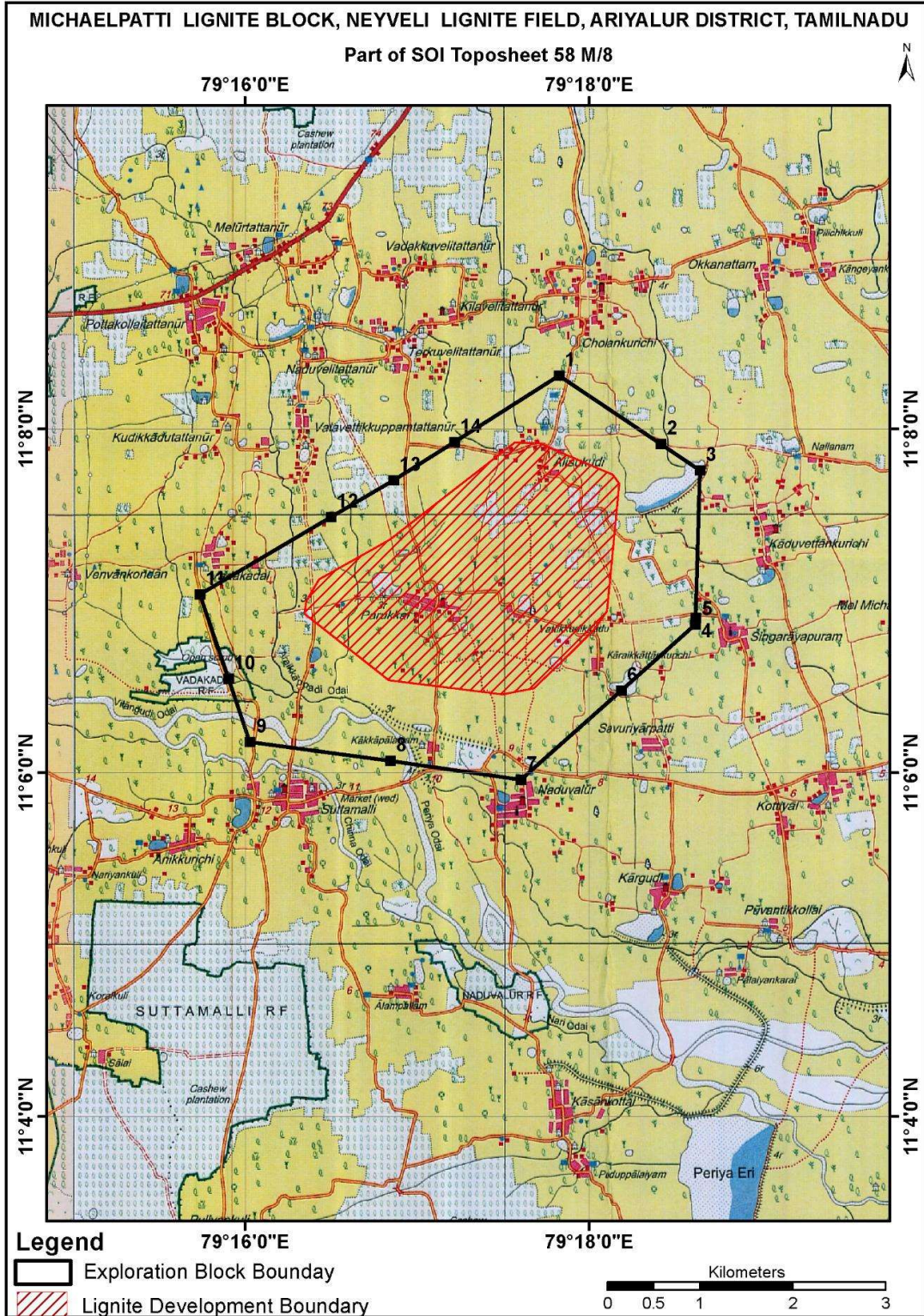
**Michaelpatti Lignite Block Summary**

<b>Sr.No</b>	<b>Features</b>	<b>Details</b>
<b>1</b>	<b>Location</b>	
	Lignite Block	Michaelpatti
	Latitude	Latitude (N):11° 05' 0" - 11° 07' 0"
	Longitude	Longitude (E):79° 15' 0" -79° 21' 0"
	Topo Sheet No.	SOI 8 of 58/M
	Lignite Field	Neyveli Lignite Field
	Villages	Alisukudi, Parukkal, Vatikudukadu Kakkapalayam.
	Tehsil/Taluka	Udayarpalayam
	District	Ariyalur
	State	Tamil Nadu
<b>2</b>	<b>Connectivity with Block</b>	
	Nearest Rail Head	Ariyalur
	Road	Michaelpatti block is named after the village and is approached by road from Udayarpalayam around 5km. in the north and Tiruchirappalli is around 75km. Off south-west of the block.
	Airport	Trichy
<b>3</b>	<b>Area</b>	
	Geological Block Area	14.8 Sq.km
	Forest Area	No forest as per toposheet
	Non-Forest Area	14.8 Sq.km
<b>4</b>	<b>Climate and Topography</b>	
	Average Annual Rainfall	1200 mm.
	Temperature (Min.- Max. in°C)	27 to 39
	Local Surface Drainage Channels	The topography is gently undulating generally sloping very gently towards east. No major rivers flow in the block. A seasonal channel by name Vilangudi Odai flows from west to east in the southern part of the block.
	Rivers	The Kollidam river is about 8 km in the south of the block.
<b>5</b>	<b>Exploration</b>	
	Status	Regional Exploration completed. (1600x1600m grid)
	Exploration Agency	Mineral Exploration Corporation Ltd., (MECL)
	Explored Area (as per GR)	45 Sq. km (Appx.) as per GR.
	Total Number of Boreholes with metreage	19 boreholes & 3604.00 m
	Borehole Density	2.36
	General Dip of Seams	NE-SW with dips near horizontal to SE
	General Strike Direction	General strike is ESE-WNW.

	Faults	Devoid of Fault						
	Depth range of Lignite seam	100.20m to 118.60m						
<b>6</b>	<b>Lignite Reserve:</b> Inferred and Indicated Category: Sector –I : 28.069 MT							
	Sector	split-I	Split-II	Split-III	Total (MT)	%		
	<b>I</b>	<b>13.828</b>	<b>10.497</b>	<b>3.744</b>	<b>28.069</b>	<b>89.69</b>		
	II	0.378	0.307	0.303	0.988	3.16		
	III	2.238	0	0	2.238	7.15		
		16.444	10.804	4.047	31.295	100.00		
	Ratio-Wise Reserve (MT)	Grade as per National Lignite Index	Grade GCV	split-I	Split-II	Split-III	Total (MT)	%
		G15,G16,G17	2001-3000	11,482	8,216	4,046	23,744	75.87
		G13,G14	3001-4000	4,962	2,589	0	7,551	24.12
				16,444	10,805	4,046	31,295	100
<b>7</b>	<b>Surface Constraints</b>	A few small waterbodies and Nalla present in the block. Three villages falls within the block.						
<b>8</b>	<b>Grade of Lignite</b>	G13, G14,G15,G16,G17 (Provisional). Based on Grade wise data available in GR.						
<b>9</b>	<b>Decision Support System (DSS) Analysis</b>	The polygon touches major river(s) –Vilangudi Odai.						
<b>10</b>	<b>Eco Sensitive Zone (ESZ)</b>	About 25Km North-East of Karaiveddi Bird Sanctuary.						
<b>11</b>	<b>Remarks</b>	Regional Exploration completed (1600x1600m grid). Geological Report available.						

**Note:**

- The summary has been compiled from “Geological Note on Regional Exploration for Lignite, Michaelpatti Block, Ariyalur District, Tamil Nadu-August 1996, prepared by Mineral Exploration Corporation Ltd., Nagpur.
- The Exploration block area mentioned above is as given in the Geological report, which may vary after DGPS survey.



**Provisional cardinal Points for Michaelpatti Lignite Block, Ariyalur District, Tamilnadu.**

Boundary Points	Latitude (DMS)	Longitude (DMS)
1	11° 8' 18.435" N	79° 17' 49.505" E
2	11° 7' 54.601" N	79° 18' 24.969" E
3	11° 7' 45.444" N	79° 18' 38.594" E
4	11° 6' 53.911" N	79° 18' 37.147" E
5	11° 6' 51.562" N	79° 18' 37.081" E
6	11° 6' 28.527" N	79° 18' 11.178" E
7	11° 5' 57.407" N	79° 17' 36.189" E
8	11° 6' 4.109" N	79° 16' 50.548" E
9	11° 6' 10.625" N	79° 16' 1.607" E
10	11° 6' 32.646" N	79° 15' 54.095" E
11	11° 7' 2.160" N	79° 15' 44.028" E
12	11° 7' 29.093" N	79° 16' 29.868" E
13	11° 7' 41.924" N	79° 16' 51.709" E
14	11° 7' 55.319" N	79° 17' 12.911" E