

MARWATOLA SECTOR VI & VII COMBINED COAL BLOCK

PART A

Sl. No.	Features	Details
1.	Location	
	Coal Block	MARWATOLA SECTOR VI & VII COMBINED BLOCK
	Latitude	23° 15' 59'' N & 23° 18' 04'' N (Provisional)
	Longitude	81° 12' 25'' E & 81° 17' 19'' E (Provisional)
	Topo Sheet No.	64 E/3 and 64E/7
	Coalfield	Sohagpur
	Villages	Raugarh, Mantola, (As per Survey of India Toposheet)
	District	Shahdol
	State	Madhya Pradesh
2.	Connectivity with Block	
	Nearest Rail Head	The nearest rail head is Shahdol located 12 km north-east of the block on Anuppur-Chirimiri broad gauge line of South East Central Railway.
	Road	The Shahdol-Pali road (NH-78) passes through Marwatola block. Besides, there are some forest roads extending to the jungle clad ridges from where timber is transported
3.	Area	
	Geological Block Area	22.17 sq.km.(as per plan in WGS84 UTM system)
	Forest Area	46% (Approximately)
	Non-Forest Area	54 % (Approximately)
4.	Topography	
	Local Surface Drainage Channels	In the block there are three nallas flowing (i) Arar Nalla (from South to Southeast), (ii) Patpariha Nalla (from Southwest to South) and (iii) Bagaiha Nalla (from Southwest to South) in which Patpariha Nalla and Bagaiha Nalla both ultimately join Arar Nalla in Southeast direction.
	Rivers	Koilarha Nala ,Bagaiha and Arar Nala .
5.	Exploration	
	Status	Explored
	Boreholes and meterage drilled	Total 107 boreholes and meterage drilled 27032m
	Borehole Density	Overall 4.83 BHs/sq.km and 8.37 BHs/sq.km in proved area
	General Dip of Seams	1° to 4° NorthEasterly
	General Strike Direction	NE-SW

6. Coal Seams & Reserve					
	Number of Coal Seams	Thickness Range (m)	Floor Depth Range (m)	Geological Reserve (Mt)	Grade
	VIII	0.05-1.90	25.43-79.00	3.20	G9-G4
	L2	0.08-3.38	29.61-121.20	7.66	G12-G7
	VII TOP	0.17-6.09	53.97-141.85	44.61	G12-G5
	VII BOT	0.85-3.80	64.55-152.00	38.83	G12-G6
	VII COMB	4.61-10.58	89.31-173.80	34.25	G12-G9
	VI	0.06-2.99	90.47-197.25	9.73	G5-G11
	VT	0.20-3.85	106.30-212.55	16.25	G12-G6
	VB	0.06-2.24	121.40-235.00	10.85	G10-G5
	L1	0.10-3.75	132.58-246.43	11.93	G12-G3
	L0	0.09-1.65	144.90-236.76	12.46	G11-G7
	Indicated			155.42	
	Total			345.19	
<p>Around 77.54 Mt of coal reserve lie in this 2.34 sq.km area, falling within the tiger corridor, out of total coal reserve of 345.19Mt in the total block area of 22.17 sq.km of Marwatola Sector-VI & VII coal block. Total reserve excluding the area within the tiger corridor will be approximately 267.65 Mt.</p>					
7.	Surface Constraints	1. The Railway line Anuppur to Katni is passing partly along the northern boundary of the block 2. Bagaiha nala is passing through the southern part of the block 3. Arar nala is passing through the eastern part of the block. 4. sohagpur river forest 5. an area of 2.34 sq.km, falls under Achanakmar-Bandhavgarh Tiger Corridor.			
8.	Grade of the block	G9 (Provisional) based on weighted average grade as per data available in GR.			
9.	Decision Support System (DSS) Analysis	Protected Area Info: The polygon touches a tiger corridor. Wildlife Info: The polygon touches Wildlife Habitat(s).-Sloth Bear, Dhole			
10.	Eco Sensitive Zone (ESZ)	Approx. 10% area overlap with Bandhavgarh-Achanakmar Tiger Corridor.			

PART B

Sr. No.	Features	Details
1.	Mining Plan	Not prepared
2.	Tentative Peak Rated Mine Capacity	4.0 MTY

Note:

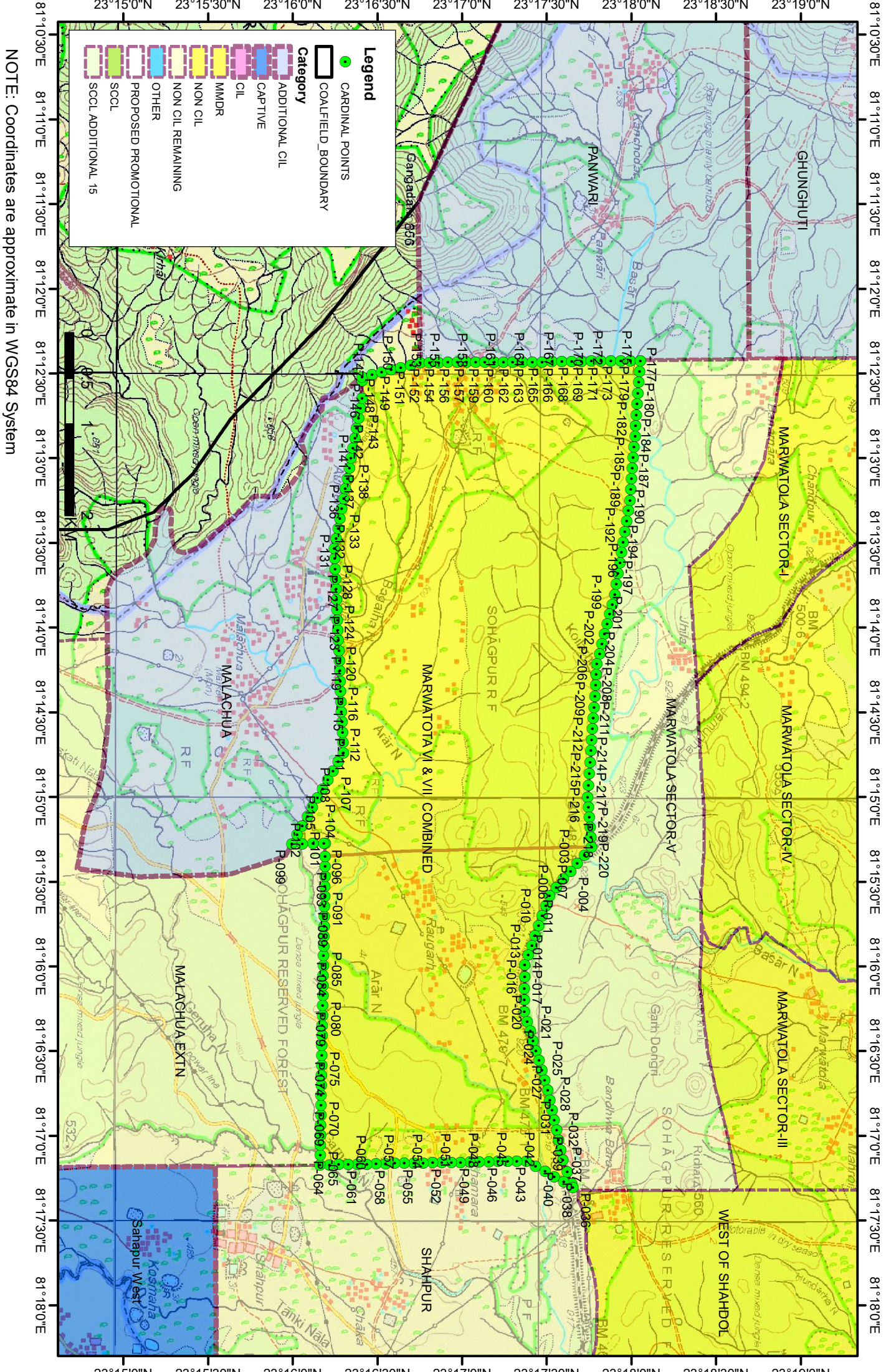
1. The above data is compiled from Geological Report, Mining Plan and the data furnished by the prior allottee in Annexure-I/II, as available. For clarifications with regard to above data, please refer aforesaid source documents.

2. The boundary of the block has been taken from GR after conversion to WGS84 system by feature matching. The block boundary is provisional and the cardinal points, bounding coordinates are approximate.
3. There is a difference in area in the shape file and GR. Area in the shape file is based on feature mapped plan of the block as given in the GR. So, the area is tentative and field DGPS survey is required to ascertain the exact area.

Disclaimer:

1. The analysis is done on Beta-version (Trial Version) of Decision Support System (DSS) of FSI/ MOEF.
2. The Decision Rules for various parameters of this DSS System are controlled by FSI.
3. CMPDI only runs this DSS to obtain the status of any block based on these Decision Rules.
4. The database of the Decision Rules is updated by FSI from time to time.
5. CMPDI does not own any responsibility for variation in the results which are based on the decision Rules of the FSI DSS in case of any updation of the database at FSI end.
6. ESZ analysis and tiger habitat/ corridor given here is based on the information available in public domain. Bidders are encouraged to verify this information and any other information additionally available.

MARWATOLA VI & VII COMBINED



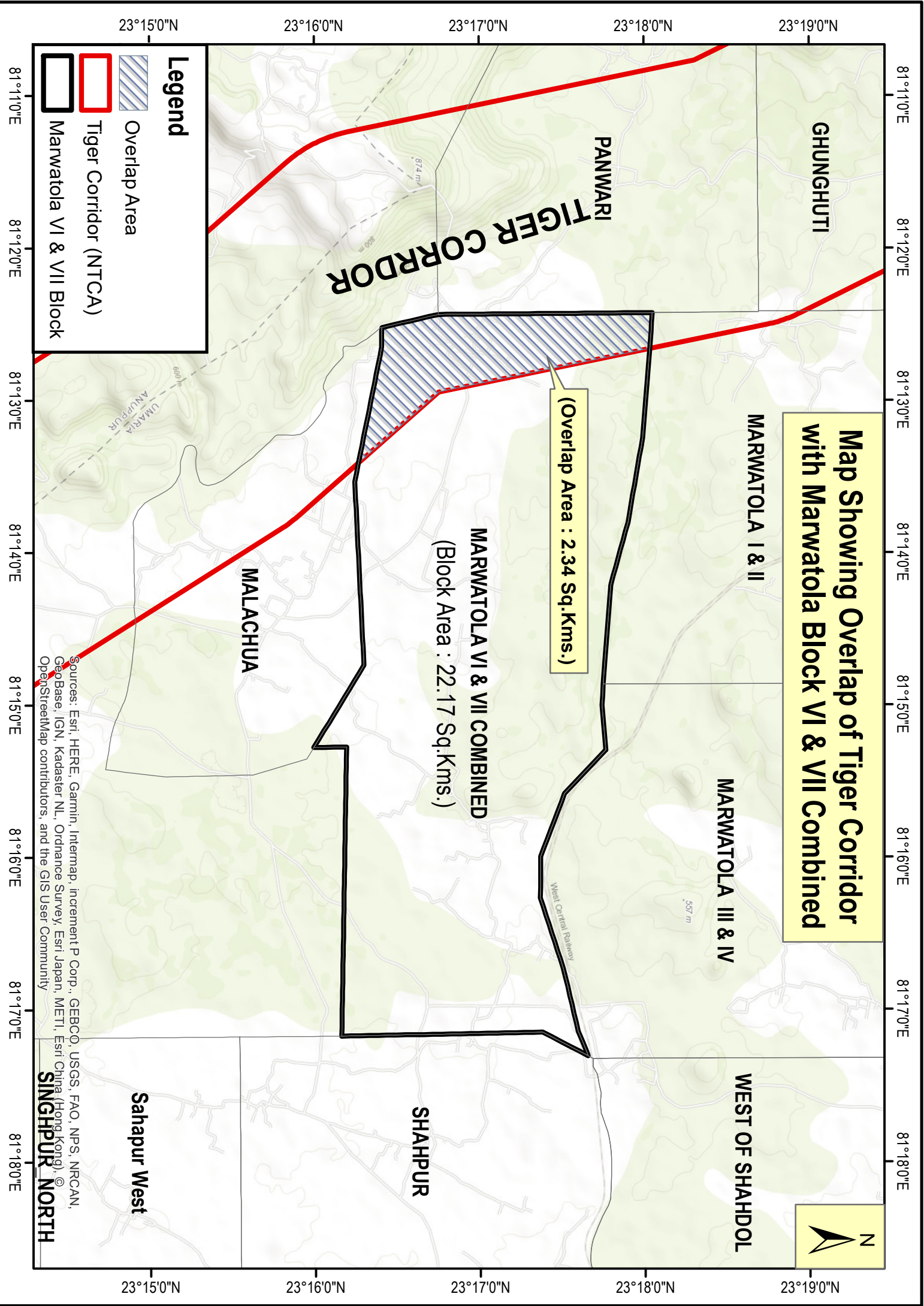
Legend	
●	CARDINAL POINTS
	COALFIELD_BOUNDARY
Category	
	ADDITIONAL CIL
	CAPTIVE
	CIL
	MMDR
	NON CIL
	NON CIL REMAINING
	OTHER
	PROPOSED PROMOTIONAL
	SCCL
	SCCL ADDITIONAL 15

NOTE: Coordinates are approximate in WGS84 System

23°15'0"N 23°15'30"N 23°16'0"N 23°16'30"N 23°17'0"N 23°17'30"N 23°18'0"N 23°18'30"N 23°19'0"N

81°10'30"E 81°11'0"E 81°11'30"E 81°12'0"E 81°12'30"E 81°13'0"E 81°13'30"E 81°14'0"E 81°14'30"E 81°15'0"E 81°15'30"E 81°16'0"E 81°16'30"E 81°17'0"E 81°17'30"E 81°18'0"E

23°15'0"N 23°15'30"N 23°16'0"N 23°16'30"N 23°17'0"N 23°17'30"N 23°18'0"N 23°18'30"N 23°19'0"N






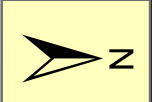
Map Showing Overlap of Tiger Corridor with Marwatola Block VI & VII Combined

(Overlap Area : 2.34 Sq.Kms.)

MARWATOLA VI & VII COMBINED
(Block Area : 22.17 Sq.Kms.)

Legend

-  Overlap Area
-  Tiger Corridor (NTCA)
-  Marwatola VI & VII Block



Sources: Esri, HERE, Garmin, Intermap, increment P Corp., GEBCO, USGS, FAO, NPS, NRCAN, GeoBase, IGN, Kadaster NL, Ordnance Survey, Esri Japan, METI, Esri China (Hong Kong), Swisstopo, SINGAPOUR NORTH, and the GIS User Community

23°15'0"N 23°16'0"N 23°17'0"N 23°18'0"N 23°19'0"N

81°11'0"E 81°12'0"E 81°13'0"E 81°14'0"E 81°15'0"E 81°16'0"E 81°17'0"E 81°18'0"E

81°11'0"E 81°12'0"E 81°13'0"E 81°14'0"E 81°15'0"E 81°16'0"E 81°17'0"E 81°18'0"E

23°15'0"N

23°16'0"N

23°17'0"N

23°18'0"N

23°19'0"N

23°15'0"N

23°16'0"N

23°17'0"N

23°18'0"N

23°19'0"N

Sahapur West

SHAHPUR

WEST OF SHAHDOL

MARWATOLA III & IV

MARWATOLA I & II

MALACHUA

PANWARI
TIGER CORRIDOR

GHUNGHUTI

UMARIA
ANUPUR

West Central Railway

874 m

800 m

600 m

557 m

**Co-ordinates (in WGS 84 System) of cardinal points of
Marwatola Sector VI and VII Combined Coal Block**

Sl. No.	Point ID	Longitude	Latitude
1	P-01	81° 15' 17.640" E	23° 17' 45.817" N
2	P-02	81° 15' 20.506" E	23° 17' 43.316" N
3	P-03	81° 15' 23.371" E	23° 17' 40.816" N
4	P-04	81° 15' 26.237" E	23° 17' 38.316" N
5	P-05	81° 15' 29.103" E	23° 17' 35.816" N
6	P-06	81° 15' 31.969" E	23° 17' 33.316" N
7	P-07	81° 15' 34.834" E	23° 17' 30.815" N
8	P-08	81° 15' 38.371" E	23° 17' 29.575" N
9	P-09	81° 15' 41.907" E	23° 17' 28.335" N
10	P-10	81° 15' 45.444" E	23° 17' 27.094" N
11	P-11	81° 15' 48.980" E	23° 17' 25.854" N
12	P-12	81° 15' 52.516" E	23° 17' 24.614" N
13	P-13	81° 15' 56.052" E	23° 17' 23.373" N
14	P-14	81° 15' 59.589" E	23° 17' 22.133" N
15	P-15	81° 16' 3.678" E	23° 17' 22.087" N
16	P-16	81° 16' 7.768" E	23° 17' 22.041" N
17	P-17	81° 16' 11.858" E	23° 17' 21.996" N
18	P-18	81° 16' 15.947" E	23° 17' 21.950" N
19	P-19	81° 16' 19.429" E	23° 17' 22.991" N
20	P-20	81° 16' 22.911" E	23° 17' 24.032" N
21	P-21	81° 16' 26.393" E	23° 17' 25.074" N
22	P-22	81° 16' 29.875" E	23° 17' 26.115" N
23	P-23	81° 16' 33.357" E	23° 17' 27.156" N
24	P-24	81° 16' 36.839" E	23° 17' 28.197" N
25	P-25	81° 16' 40.321" E	23° 17' 29.239" N
26	P-26	81° 16' 43.803" E	23° 17' 30.280" N
27	P-27	81° 16' 47.349" E	23° 17' 31.051" N
28	P-28	81° 16' 50.895" E	23° 17' 31.821" N
29	P-29	81° 16' 54.441" E	23° 17' 32.592" N
30	P-30	81° 16' 57.986" E	23° 17' 33.363" N
31	P-31	81° 17' 1.532" E	23° 17' 34.133" N
32	P-32	81° 17' 5.078" E	23° 17' 34.904" N
33	P-33	81° 17' 8.624" E	23° 17' 35.675" N
34	P-34	81° 17' 12.764" E	23° 17' 37.223" N
35	P-35	81° 17' 16.904" E	23° 17' 38.771" N
36	P-36	81° 17' 18.182" E	23° 17' 39.232" N
37	P-37	81° 17' 16.315" E	23° 17' 35.914" N
38	P-38	81° 17' 14.449" E	23° 17' 32.597" N
39	P-39	81° 17' 12.583" E	23° 17' 29.280" N

Sl. No.	Point ID	Longitude	Latitude
40	P-40	81° 17' 10.716" E	23° 17' 25.962" N
41	P-41	81° 17' 8.850" E	23° 17' 22.645" N
42	P-42	81° 17' 8.917" E	23° 17' 19.324" N
43	P-43	81° 17' 8.983" E	23° 17' 16.003" N
44	P-44	81° 17' 9.050" E	23° 17' 12.682" N
45	P-45	81° 17' 9.116" E	23° 17' 9.361" N
46	P-46	81° 17' 9.183" E	23° 17' 6.039" N
47	P-47	81° 17' 9.249" E	23° 17' 2.718" N
48	P-48	81° 17' 9.316" E	23° 16' 59.397" N
49	P-49	81° 17' 9.383" E	23° 16' 56.076" N
50	P-50	81° 17' 9.449" E	23° 16' 52.755" N
51	P-51	81° 17' 9.516" E	23° 16' 49.434" N
52	P-52	81° 17' 9.582" E	23° 16' 46.113" N
53	P-53	81° 17' 9.649" E	23° 16' 42.792" N
54	P-54	81° 17' 9.715" E	23° 16' 39.471" N
55	P-55	81° 17' 9.782" E	23° 16' 36.150" N
56	P-56	81° 17' 9.848" E	23° 16' 32.829" N
57	P-57	81° 17' 9.915" E	23° 16' 29.508" N
58	P-58	81° 17' 9.982" E	23° 16' 26.187" N
59	P-59	81° 17' 10.048" E	23° 16' 22.866" N
60	P-60	81° 17' 10.115" E	23° 16' 19.545" N
61	P-61	81° 17' 10.181" E	23° 16' 16.224" N
62	P-62	81° 17' 10.248" E	23° 16' 12.903" N
63	P-63	81° 17' 10.314" E	23° 16' 9.582" N
64	P-64	81° 17' 6.787" E	23° 16' 9.642" N
65	P-65	81° 17' 3.259" E	23° 16' 9.701" N
66	P-66	81° 16' 59.732" E	23° 16' 9.761" N
67	P-67	81° 16' 56.204" E	23° 16' 9.821" N
68	P-68	81° 16' 52.676" E	23° 16' 9.880" N
69	P-69	81° 16' 49.149" E	23° 16' 9.940" N
70	P-70	81° 16' 45.621" E	23° 16' 10.000" N
71	P-71	81° 16' 42.094" E	23° 16' 10.059" N
72	P-72	81° 16' 38.566" E	23° 16' 10.119" N
73	P-73	81° 16' 35.038" E	23° 16' 10.179" N
74	P-74	81° 16' 31.511" E	23° 16' 10.238" N
75	P-75	81° 16' 27.983" E	23° 16' 10.298" N
76	P-76	81° 16' 24.456" E	23° 16' 10.357" N
77	P-77	81° 16' 20.928" E	23° 16' 10.417" N
78	P-78	81° 16' 17.400" E	23° 16' 10.476" N

Sl. No.	Point ID	Longitude	Latitude
79	P-79	81° 16' 13.873" E	23° 16' 10.536" N
80	P-80	81° 16' 10.345" E	23° 16' 10.595" N
81	P-81	81° 16' 6.818" E	23° 16' 10.654" N
82	P-82	81° 16' 3.290" E	23° 16' 10.714" N
83	P-83	81° 15' 59.762" E	23° 16' 10.773" N
84	P-84	81° 15' 56.235" E	23° 16' 10.833" N
85	P-85	81° 15' 52.707" E	23° 16' 10.892" N
86	P-86	81° 15' 49.180" E	23° 16' 10.951" N
87	P-87	81° 15' 45.652" E	23° 16' 11.010" N
88	P-88	81° 15' 42.124" E	23° 16' 11.070" N
89	P-89	81° 15' 38.597" E	23° 16' 11.129" N
90	P-90	81° 15' 35.069" E	23° 16' 11.188" N
91	P-91	81° 15' 31.542" E	23° 16' 11.247" N
92	P-92	81° 15' 28.014" E	23° 16' 11.307" N
93	P-93	81° 15' 24.486" E	23° 16' 11.366" N
94	P-94	81° 15' 20.959" E	23° 16' 11.425" N
95	P-95	81° 15' 16.512" E	23° 16' 11.499" N
96	P-96	81° 15' 16.509" E	23° 16' 10.898" N
97	P-97	81° 15' 16.539" E	23° 16' 7.131" N
98	P-98	81° 15' 16.569" E	23° 16' 3.364" N
99	P-99	81° 15' 16.599" E	23° 15' 59.598" N
100	P-100	81° 15' 13.363" E	23° 16' 1.425" N
101	P-101	81° 15' 10.127" E	23° 16' 3.252" N
102	P-102	81° 15' 6.891" E	23° 16' 5.080" N
103	P-103	81° 15' 3.655" E	23° 16' 6.907" N
104	P-104	81° 15' 0.419" E	23° 16' 8.734" N
105	P-105	81° 14' 57.183" E	23° 16' 10.561" N
106	P-106	81° 14' 53.946" E	23° 16' 12.388" N
107	P-107	81° 14' 50.710" E	23° 16' 14.216" N
108	P-108	81° 14' 47.474" E	23° 16' 16.043" N
109	P-109	81° 14' 44.238" E	23° 16' 17.870" N
110	P-110	81° 14' 40.622" E	23° 16' 17.709" N
111	P-111	81° 14' 37.006" E	23° 16' 17.547" N
112	P-112	81° 14' 33.390" E	23° 16' 17.386" N
113	P-113	81° 14' 29.774" E	23° 16' 17.224" N
114	P-114	81° 14' 26.158" E	23° 16' 17.063" N
115	P-115	81° 14' 22.543" E	23° 16' 16.901" N
116	P-116	81° 14' 18.927" E	23° 16' 16.739" N
117	P-117	81° 14' 15.311" E	23° 16' 16.578" N
118	P-118	81° 14' 11.695" E	23° 16' 16.416" N
119	P-119	81° 14' 8.079" E	23° 16' 16.254" N
120	P-120	81° 14' 4.463" E	23° 16' 16.093" N

Sl. No.	Point ID	Longitude	Latitude
121	P-121	81° 14' 0.847" E	23° 16' 15.931" N
122	P-122	81° 13' 57.232" E	23° 16' 15.769" N
123	P-123	81° 13' 53.616" E	23° 16' 15.608" N
124	P-124	81° 13' 50.000" E	23° 16' 15.446" N
125	P-125	81° 13' 46.384" E	23° 16' 15.284" N
126	P-126	81° 13' 42.768" E	23° 16' 15.122" N
127	P-127	81° 13' 39.152" E	23° 16' 14.960" N
128	P-128	81° 13' 35.537" E	23° 16' 14.799" N
129	P-129	81° 13' 31.921" E	23° 16' 14.637" N
130	P-130	81° 13' 28.386" E	23° 16' 15.296" N
131	P-131	81° 13' 24.851" E	23° 16' 15.956" N
132	P-132	81° 13' 21.316" E	23° 16' 16.616" N
133	P-133	81° 13' 17.781" E	23° 16' 17.275" N
134	P-134	81° 13' 14.246" E	23° 16' 17.935" N
135	P-135	81° 13' 10.711" E	23° 16' 18.595" N
136	P-136	81° 13' 7.176" E	23° 16' 19.254" N
137	P-137	81° 13' 3.641" E	23° 16' 19.914" N
138	P-138	81° 13' 0.106" E	23° 16' 20.573" N
139	P-139	81° 12' 56.571" E	23° 16' 21.233" N
140	P-140	81° 12' 53.036" E	23° 16' 21.892" N
141	P-141	81° 12' 49.501" E	23° 16' 22.552" N
142	P-142	81° 12' 45.966" E	23° 16' 23.211" N
143	P-143	81° 12' 42.431" E	23° 16' 23.871" N
144	P-144	81° 12' 38.896" E	23° 16' 24.530" N
145	P-145	81° 12' 32.696" E	23° 16' 24.507" N
146	P-146	81° 12' 31.250" E	23° 16' 24.562" N
147	P-147	81° 12' 30.397" E	23° 16' 27.983" N
148	P-148	81° 12' 29.544" E	23° 16' 31.403" N
149	P-149	81° 12' 28.691" E	23° 16' 34.823" N
150	P-150	81° 12' 27.838" E	23° 16' 38.244" N
151	P-151	81° 12' 26.985" E	23° 16' 41.664" N
152	P-152	81° 12' 26.132" E	23° 16' 45.085" N
153	P-153	81° 12' 26.108" E	23° 16' 48.367" N
154	P-154	81° 12' 26.085" E	23° 16' 51.649" N
155	P-155	81° 12' 26.062" E	23° 16' 54.931" N
156	P-156	81° 12' 26.039" E	23° 16' 58.213" N
157	P-157	81° 12' 26.016" E	23° 17' 1.495" N
158	P-158	81° 12' 25.993" E	23° 17' 4.777" N
159	P-159	81° 12' 25.970" E	23° 17' 8.059" N
160	P-160	81° 12' 25.947" E	23° 17' 11.341" N
161	P-161	81° 12' 25.924" E	23° 17' 14.623" N
162	P-162	81° 12' 25.901" E	23° 17' 17.905" N

Sl. No.	Point ID	Longitude	Latitude
163	P-163	81° 12' 25.869" E	23° 17' 21.377" N
164	P-164	81° 12' 25.838" E	23° 17' 24.848" N
165	P-165	81° 12' 25.807" E	23° 17' 28.320" N
166	P-166	81° 12' 25.775" E	23° 17' 31.791" N
167	P-167	81° 12' 25.744" E	23° 17' 35.263" N
168	P-168	81° 12' 25.713" E	23° 17' 38.734" N
169	P-169	81° 12' 25.681" E	23° 17' 42.206" N
170	P-170	81° 12' 25.650" E	23° 17' 45.677" N
171	P-171	81° 12' 25.618" E	23° 17' 49.149" N
172	P-172	81° 12' 25.587" E	23° 17' 52.620" N
173	P-173	81° 12' 25.556" E	23° 17' 56.092" N
174	P-174	81° 12' 25.524" E	23° 17' 59.563" N
175	P-175	81° 12' 25.493" E	23° 18' 3.035" N
176	P-176	81° 12' 29.310" E	23° 18' 2.770" N
177	P-177	81° 12' 33.128" E	23° 18' 2.505" N
178	P-178	81° 12' 36.945" E	23° 18' 2.240" N
179	P-179	81° 12' 40.762" E	23° 18' 1.975" N
180	P-180	81° 12' 44.580" E	23° 18' 1.710" N
181	P-181	81° 12' 48.397" E	23° 18' 1.445" N
182	P-182	81° 12' 52.214" E	23° 18' 1.180" N
183	P-183	81° 12' 55.985" E	23° 18' 0.886" N
184	P-184	81° 12' 59.755" E	23° 18' 0.592" N
185	P-185	81° 13' 3.526" E	23° 18' 0.298" N
186	P-186	81° 13' 7.296" E	23° 18' 0.005" N
187	P-187	81° 13' 11.067" E	23° 17' 59.711" N
188	P-188	81° 13' 14.837" E	23° 17' 59.417" N
189	P-189	81° 13' 18.540" E	23° 17' 58.818" N
190	P-190	81° 13' 22.243" E	23° 17' 58.219" N
191	P-191	81° 13' 25.947" E	23° 17' 57.620" N
192	P-192	81° 13' 29.650" E	23° 17' 57.020" N
193	P-193	81° 13' 33.353" E	23° 17' 56.421" N
194	P-194	81° 13' 37.056" E	23° 17' 55.822" N
195	P-195	81° 13' 40.759" E	23° 17' 55.223" N
196	P-196	81° 13' 44.462" E	23° 17' 54.624" N
197	P-197	81° 13' 48.165" E	23° 17' 54.025" N
198	P-198	81° 13' 51.674" E	23° 17' 53.127" N
199	P-199	81° 13' 55.183" E	23° 17' 52.230" N
200	P-200	81° 13' 58.692" E	23° 17' 51.333" N
201	P-201	81° 14' 2.201" E	23° 17' 50.435" N
202	P-202	81° 14' 5.710" E	23° 17' 49.538" N
203	P-203	81° 14' 9.219" E	23° 17' 48.641" N
204	P-204	81° 14' 12.728" E	23° 17' 47.743" N

Sl. No.	Point ID	Longitude	Latitude
205	P-205	81° 14' 16.583" E	23° 17' 47.469" N
206	P-206	81° 14' 20.438" E	23° 17' 47.194" N
207	P-207	81° 14' 24.292" E	23° 17' 46.920" N
208	P-208	81° 14' 28.147" E	23° 17' 46.645" N
209	P-209	81° 14' 32.002" E	23° 17' 46.371" N
210	P-210	81° 14' 35.856" E	23° 17' 46.096" N
211	P-211	81° 14' 39.711" E	23° 17' 45.822" N
212	P-212	81° 14' 43.566" E	23° 17' 45.547" N
213	P-213	81° 14' 47.687" E	23° 17' 45.269" N
214	P-214	81° 14' 51.807" E	23° 17' 44.991" N
215	P-215	81° 14' 55.928" E	23° 17' 44.713" N
216	P-216	81° 15' 0.049" E	23° 17' 44.435" N
217	P-217	81° 15' 3.567" E	23° 17' 44.711" N
218	P-218	81° 15' 7.085" E	23° 17' 44.988" N
219	P-219	81° 15' 10.603" E	23° 17' 45.264" N
220	P-220	81° 15' 14.122" E	23° 17' 45.540" N