

MARKI MANGLI-IV COAL BLOCK SUMMARY

PART A

Sr. No	Features	Details
1. Location		
	Coal Block	MARKI MANGLI-IV
	Latitude	19° 47' 20" - 19° 48' 32" (Provisional)
	Longitude	78° 47' 16" - 78° 48' 33" (Provisional)
	Topo Sheet No.	56 I/13
	Coalfield	Wardha Valley
	Villages	Hirapur, Mangali, Bhendala
	Tehsil/Taluka	Jhari-Jamni
	District	Yavatmal
	State	Maharashtra
2. Connectivity with Block		
	Nearest Rail Head	The Wani-Pimpalkhuti broad gauge railway line runs parallel to the Wani-Patanbori road. However, there is no regular railway traffic on this line at present.
	Road	The area is approachable by an all-weather tar road connecting Wani and Patanbori and is about 35 km from Wani. The villages Mukutban and Mangli are on this road and Marki and Pandharkawda are connected to this road by metalled roads.
	Airport	
3. Area		
	Geological Block Area	As per mining plan: 2.04 sq.km. approx... As per Shapefile: 2.1 sq.km. (In WGS84 Datum) approx..(Refer note below)
	Forest Area	Nil
	Non-Forest Area	100 %
4. Climate and Topography		
	Average Annual Rainfall	1300 mm
	Temperature (Min. — Max.)	28°C-47°C
	Local Surface Drainage Channels	The Penganga river with a general eastward course drains through the extreme southern part of the area. The Valdarbha nadi, a major tributary with its general southward course joins the Penganga river near Deulwada village. Other minor seasonal nala like Lingil, Bhuduk and Tiwandi drain the interior parts of the area and join the Penganga river directly.
	Rivers	
5. Exploration		
	Status	Explored

	Exploration Agency	DGM, Maharashtra (Geological Report of Marki Mangli II,III & IV Coal Blocks)			
	Total Number of Boreholes with meterage	21 Boreholes; 1568.00 m			
	Borehole Density	Approx. 10 Boreholes/sq.km.			
	General Dip of Seams	12°-15° South westerly			
	General Strike Direction	NW-SE			
6.	Coal Seams & Reserve				
	Coal Seams	Thickness Range (m)	Depth Range (m)	Geological Resources (MT)	Grade
	Top Seam	1.00-4.74		3.42	D
	Bottom Seam	0.50-0.95			D
		Total		3.42	
7.	Surface Constraints	Wani-Chanak branch of Central Railways passes through the block. SH-234 passes through the block.			
8.	Grade of coal	G8 (Provisional) based on weighted average grade as per grade-wise data available in GR.			
9.	Decision Support System (DSS) Analysis	Wildlife Info: Great Indian Bustard			
10.	Eco Sensitive Zone (ESZ) Analysis	Approx. 22 Km from Tipeswar WLS ESZ.			

PART B- Marki Mangli-IV

Sr. No.	Features	Details
1.	Previous Allocation	
	Name and Address of Allocatee	M/s Shree Veerangana Steel Limited 126-128, Shriram Shyam Tower, Kingsway, Nagpur-440001
2.	Target Capacity as per Mining Plan	0.2 MTY
3.	Status of Clearances/Approvals (As per information submitted by prior allottee)	
	Mining Plan/ Mine Closure Plan	<i>Approved</i>
	Forest Clearance	<i>No</i>
	Environmental Clearance	<i>Available (Combined for Marki Mangli-II,III & IV)</i>
	Mining Lease	<i>Available</i>
	Land Acquisition	<i>No</i>
	No. of PAFs	<i>--</i>
4.	Surface Infrastructure already built, if any.	<i>Nil</i>

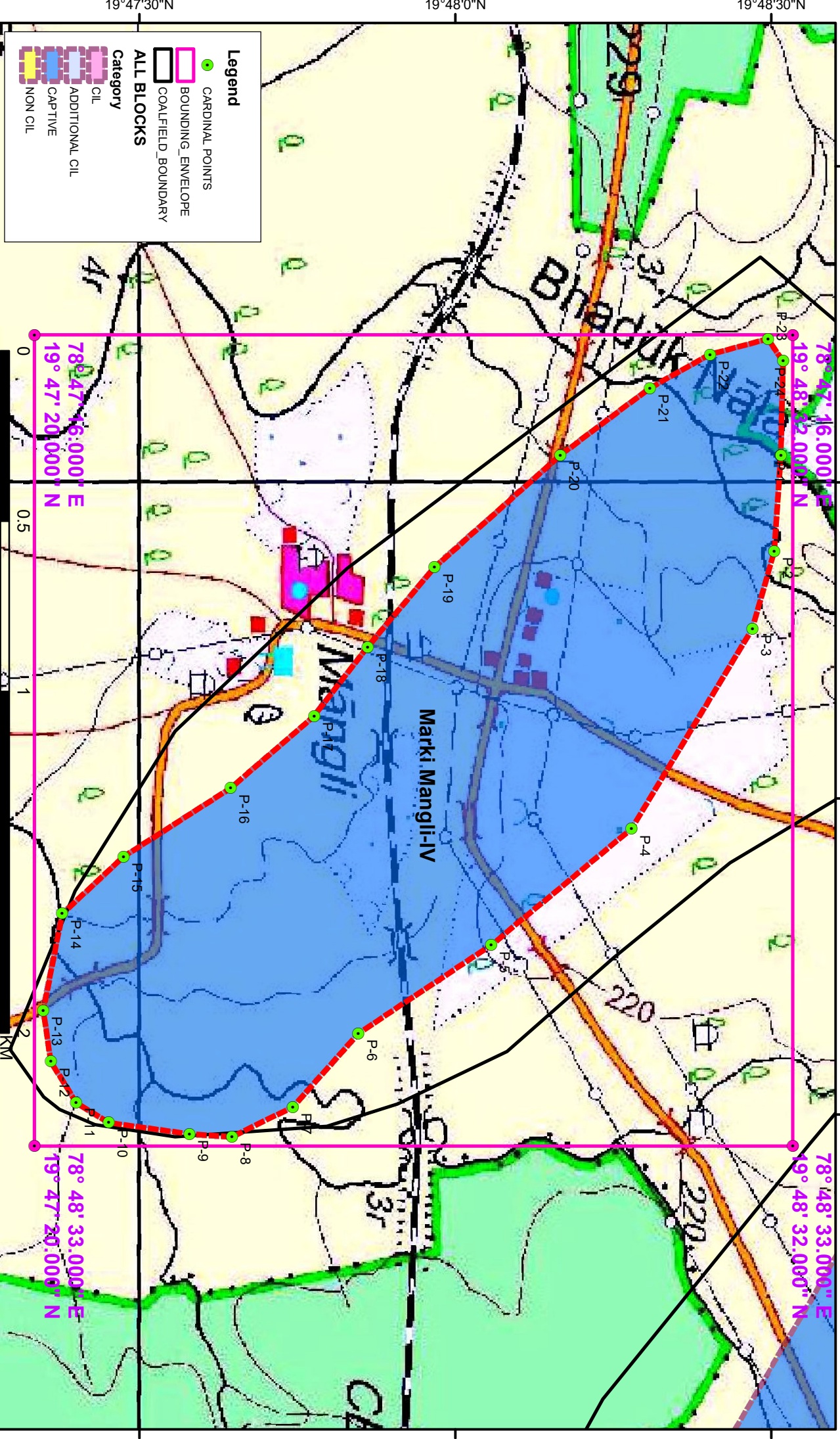
Note:

1. The above data is compiled from Geological Report, Mining Plan and the data furnished by the prior allottee in Annexure-I/II, as available. For clarifications with regard to above data, please refer aforesaid source documents.
2. The boundary of the block has been taken from GR after conversion to WGS84 system by feature matching. The block boundary is provisional and the cardinal points, bounding co-ordinates are approximate.
3. There is a difference in area in the shape file and GR. Area in the shape file is based on feature mapped plan of the block as given in the GR. So, the area is tentative and field DGPS survey is required to ascertain the exact area.

Disclaimer:

1. The analysis is done on Beta-version (Trial Version) of Decision Support System (DSS) of FSI/MOEF.
2. The Decision Rules for various parameters of this DSS System are controlled by FSI.
3. CMPDI only runs this DSS to obtain the status of any block based on these Decision Rules.
4. The database of the Decision Rules is updated by FSI from time to time.
5. CMPDI does not own any responsibility for variation in the results which are based on the decision Rules of the FSI DSS in case of any updation of the database at FSI end.
6. ESZ analysis and tiger habitat/ corridor given here is based on the information available in public domain. Bidders are encouraged to verify this information and any other information additionally available.

Marki Mangli-IV Block, Wardha Valley Coalfield



Legend

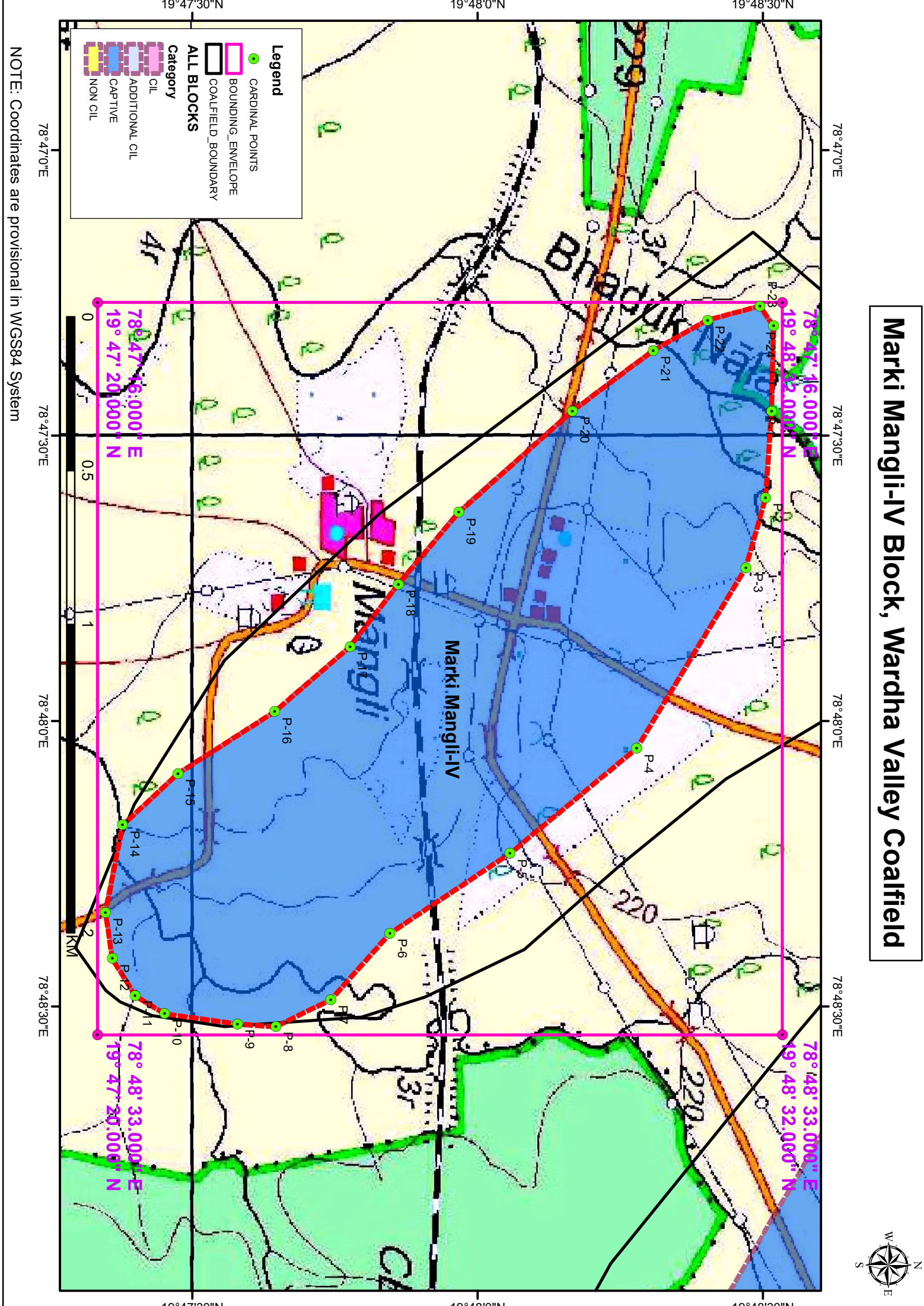
- CARDINAL POINTS
- BOUNDING_ENVELOPE
- COALFIELD_BOUNDARY

ALL BLOCKS

Category

- CIL
- ADDITIONAL CIL
- CAPTIVE
- NON CIL

NOTE: Coordinates are provisional in WGS84 System



78°47'16.000"E
19°48'32.000"N

78°47'16.000"E
19°47'20.000"N

78°48'33.000"E
19°48'32.000"N

78°48'33.000"E
19°47'20.000"N

0 0.5 1 2

KM

Provisional Cardinal Points for Marki Mangli-IV Block

POINT NO	Longitude (WGS84)	Latitude (WGS84)
P-1	78° 47' 27.408" E	19° 48' 30.879" N
P-2	78° 47' 36.549" E	19° 48' 30.271" N
P-3	78° 47' 43.864" E	19° 48' 28.179" N
P-4	78° 48' 2.876" E	19° 48' 16.697" N
P-5	78° 48' 13.926" E	19° 48' 3.371" N
P-6	78° 48' 22.298" E	19° 47' 50.774" N
P-7	78° 48' 29.292" E	19° 47' 44.528" N
P-8	78° 48' 32.118" E	19° 47' 38.762" N
P-9	78° 48' 31.850" E	19° 47' 34.716" N
P-10	78° 48' 30.768" E	19° 47' 27.053" N
P-11	78° 48' 28.861" E	19° 47' 23.951" N
P-12	78° 48' 24.953" E	19° 47' 21.537" N
P-13	78° 48' 20.134" E	19° 47' 20.843" N
P-14	78° 48' 10.945" E	19° 47' 22.641" N
P-15	78° 48' 5.534" E	19° 47' 28.447" N
P-16	78° 47' 59.011" E	19° 47' 38.641" N
P-17	78° 47' 52.180" E	19° 47' 46.554" N
P-18	78° 47' 45.625" E	19° 47' 51.626" N
P-19	78° 47' 38.068" E	19° 47' 57.988" N
P-20	78° 47' 27.411" E	19° 48' 9.943" N
P-21	78° 47' 21.032" E	19° 48' 18.458" N
P-22	78° 47' 17.842" E	19° 48' 24.137" N
P-23	78° 47' 16.379" E	19° 48' 29.645" N
P-24	78° 47' 18.469" E	19° 48' 31.111" N