

MANDAR PARVAT COAL BLOCK SUMMARY

PART A

| Sr. No. | Features | Details |
|-----------------------------------|---------------------------------|--|
| 1. Location | | |
| | Coal Block | Mandar Parvat |
| | Latitude | 25° 9' 37" N - 25° 13' 13" N (Provisional) |
| | Longitude | 87° 17' 24" E - 87° 19' 32" E (Provisional) |
| | Topo Sheet No. | G45P8 |
| | Coalfield | Rajmahal |
| | Villages | Bhalua Sujan, Karahara Basdeopur Milik, Bishunpur, Majhgawan, Semaria, Kairia Milik, Kairia, Jangal Gopali, Sian, Lagma, Jethiana, Ratanpur Doem, Jagarnathpur Milik |
| | Tehsil/Taluka | Kahalgaon |
| | District | Bhagalpur |
| | State | Bihar |
| 2. Connectivity with Block | | |
| | Nearest Rail Head | The nearest railway station and the town is Kahalgaon, Tehsil (about 10 km). The Kahalgaon Railway station is well connected to all cities by train. |
| | Road | The block is about 40 km in East direction from the district headquarters, Bhagalpur. It comes under Kahalgaon Tehsil which is 10 km from Jethiana village. Kahalgaon is well connected by excellent network of National & State Highways along with district and rural roads. National Highway-80 (NH-80) runs via Kahalgaon. |
| | Airport | |
| 3. Area | | |
| | Geological Block Area | 13.1 sq.km. (As per shape file. Refer note below) |
| | Forest Area | Approx. 3 % (As per FSI) |
| | Non-Forest Area | Approx. 97 % |
| 4. Climate and Topography | | |
| | Average Annual Rainfall | 1134mm |
| | Temperature (Min. — Max.) | 5°C-46°C |
| | Local Surface Drainage Channels | The area is drained by two tributaries, Dhulia Nala flowing from south east of the block and another nala from the east of the block and joining into one nala in the central part of the block and flowing towards north western part of the block into Koa Nala. The main drainage of the area is controlled by river Ganga flowing about 10km. to the north of the block. The high flood level of the river Ganga recorded near village Shakipura near Kahalgaon is 31.72m. |
| | Rivers | |
| 5. Exploration | | |
| | Status | Explored in Detail |
| | Exploration Agency | CMPDI |

| | | | | | |
|------------|---|--|-----------------|-------------------------|-----------|
| | Total Number of Boreholes with meterage | 111 Boreholes, 15605.00 m | | | |
| | Borehole Density | Approx. 8.47 Bhs/sq.km. | | | |
| | General Dip of Seams | The dip of the beds as deciphered is 2° - 5° towards east. | | | |
| | General Strike Direction | The general trend of coal seams of the block is NE - SW in the northern half and NW – SE in the southern half. | | | |
| | Faults | 4 Faults, throw ranging between 0-50m | | | |
| 6. | Coal Seams & Reserve | | | | |
| | Coal Seams | Thickness Range (m) | Depth Range (m) | Geological Reserve (MT) | Grade |
| | Seam V | 1.58-2.80 | 90.05-91.20 | 0.36 | G12 - G13 |
| | Seam IV | 2.66-4.78 | 96.00-97.22 | 0.927 | G9 - G12 |
| | Seam III | 0.55-6.38 | 79.41-118.88 | 10.551 | G12 - G16 |
| | Seam III TOP | 0.50-1.05 | 94.50-129.30 | 0.274 | G9 - G12 |
| | Seam III BOT | 0.45-2.00 | | 1.468 | G10 - G15 |
| | Seam II | 13.14-72.90 | 81.42-142.50 | 144.622 | G9 - G12 |
| | Seam II TOP | 3.61-22.85 | 73.35-124.14 | 79.54 | G12 - G14 |
| | Seam II BOT | 13.90-31.34 | 82.00-115.50 | 59.039 | G12 - G14 |
| | Seam II BOT (TOP) | 1.56-22.41 | 74.68-125.52 | 24.559 | G12 - G16 |
| | Seam II BOT (BOT) | 1.30-12.55 | 78.30-145.04 | 19.01 | G12 - G17 |
| | Total | | | 340.35 | |
| 7. | Surface Constraints | NA | | | |
| 8. | Grade of the block | G12 (Provisional) based on weighted average grade as per data available in GR prepared for PR. | | | |
| 9. | Decision Support System (DSS) Analysis | - | | | |
| 10. | Eco Sensitive Zone (ESZ) Analysis | Approx. 50 km to boundary of ESZ (Udawa lake) in south-eastern direction. | | | |

PART B

| Sr. No. | Features | Details |
|----------|--------------------------------------|----------|
| 1 | Tentative Peak rated Capacity | 17.5 Mty |

Note:

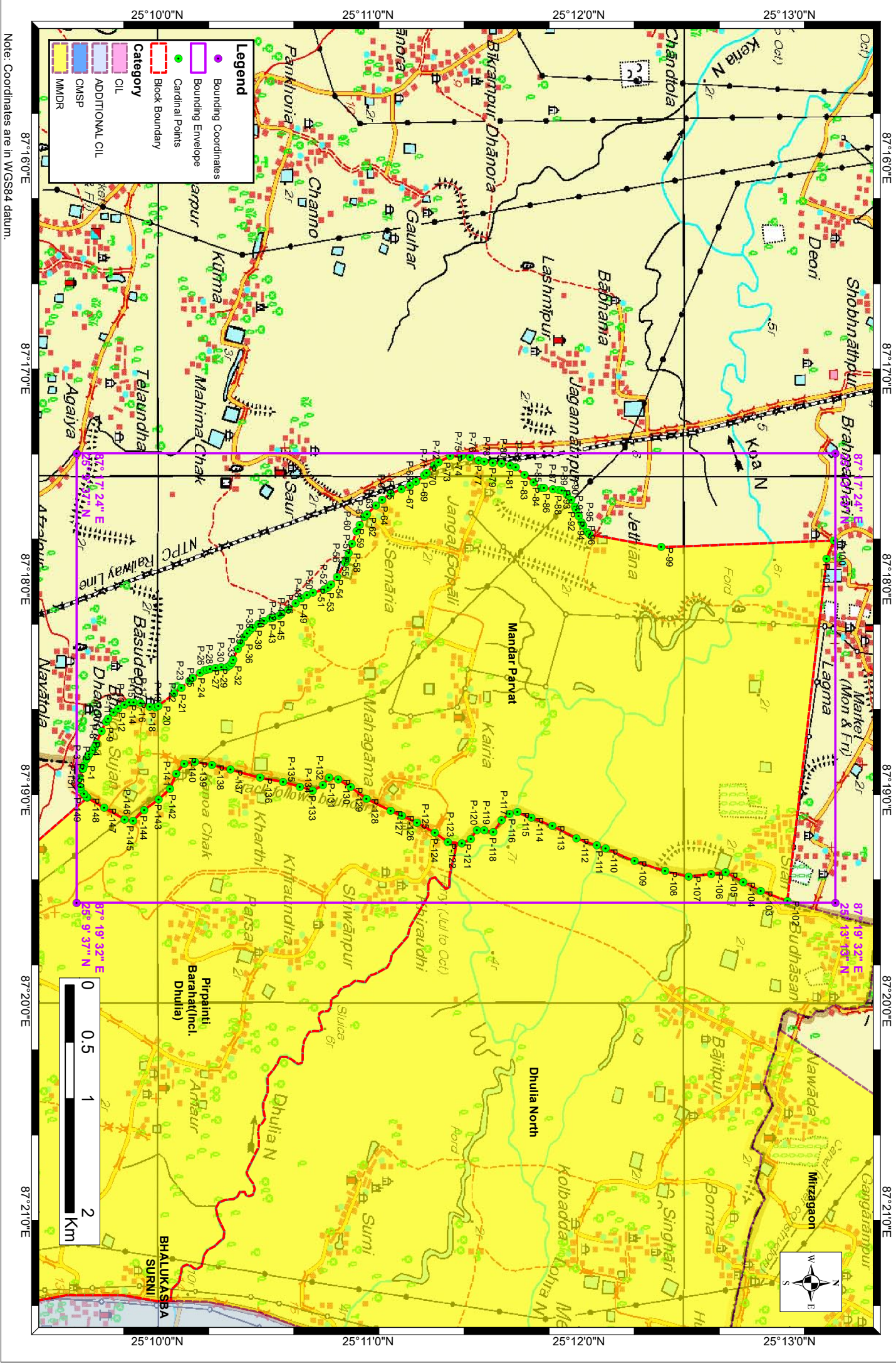
1. The above data is compiled from Geological Report, Mining Plan and the data furnished by the prior allottee in Annexure-I/II, as available. For clarifications with regard to above data, please refer aforesaid source documents.
2. The block boundary of Mandar Parvat coal block has been rationalized with adjacent Pirpainti Barahat coal block taking Bihar-Jharkhand state boundary as common boundary to make it free from administrative issues. The revised boundary and its cardinal points are given as part of this coal block summary.
3. The data is taken from geological report prepared for project report (GR for PR).

Disclaimer:

1. The analysis is done on Beta-version (Trial Version) of Decision Support System (DSS) of FSI/ MOEF.
2. The Decision Rules for various parameters of this DSS System are controlled by FSI.
3. CMPDI only runs this DSS to obtain the status of any block based on these Decision Rules.
4. The database of the Decision Rules is updated by FSI from time to time.
5. CMPDI does not own any responsibility for variation in the results which are based on the decision Rules of the FSI DSS in case of any updation of the database at FSI end.
6. ESZ analysis and tiger habitat/ corridor given here is based on the information available in public domain. Bidders are encouraged to verify this information and any other information additionally available.

Mandar Parvat Block, Rajmahal Coalfields

FOR INTERNAL/RESTRICTED USE ONLY



Note: Coordinates are in WGS84 datum.

Provisional Cardinal Points for Mandar Parvat Block

| POINT NO | Longitude (WGS84) | Latitude (WGS84) |
|----------|-------------------|-------------------|
| P-1 | 87° 18' 53.860" E | 25° 9' 38.768" N |
| P-2 | 87° 18' 52.894" E | 25° 9' 39.095" N |
| P-3 | 87° 18' 51.183" E | 25° 9' 39.692" N |
| P-4 | 87° 18' 50.291" E | 25° 9' 40.166" N |
| P-5 | 87° 18' 49.842" E | 25° 9' 40.539" N |
| P-6 | 87° 18' 48.509" E | 25° 9' 41.592" N |
| P-7 | 87° 18' 47.617" E | 25° 9' 42.138" N |
| P-8 | 87° 18' 46.725" E | 25° 9' 42.555" N |
| P-9 | 87° 18' 43.157" E | 25° 9' 44.041" N |
| P-10 | 87° 18' 40.481" E | 25° 9' 45.339" N |
| P-11 | 87° 18' 39.589" E | 25° 9' 45.902" N |
| P-12 | 87° 18' 37.807" E | 25° 9' 47.474" N |
| P-13 | 87° 18' 36.634" E | 25° 9' 48.883" N |
| P-14 | 87° 18' 35.573" E | 25° 9' 50.511" N |
| P-15 | 87° 18' 34.956" E | 25° 9' 51.927" N |
| P-16 | 87° 18' 34.919" E | 25° 9' 53.235" N |
| P-17 | 87° 18' 35.127" E | 25° 9' 55.222" N |
| P-18 | 87° 18' 36.215" E | 25° 9' 57.824" N |
| P-19 | 87° 18' 36.295" E | 25° 9' 59.450" N |
| P-20 | 87° 18' 35.888" E | 25° 10' 0.263" N |
| P-21 | 87° 18' 32.492" E | 25° 10' 4.668" N |
| P-22 | 87° 18' 30.711" E | 25° 10' 6.801" N |
| P-23 | 87° 18' 28.806" E | 25° 10' 9.049" N |
| P-24 | 87° 18' 28.024" E | 25° 10' 10.033" N |
| P-25 | 87° 18' 26.547" E | 25° 10' 12.106" N |
| P-26 | 87° 18' 25.896" E | 25° 10' 13.289" N |
| P-27 | 87° 18' 25.605" E | 25° 10' 14.102" N |
| P-28 | 87° 18' 25.514" E | 25° 10' 14.915" N |
| P-29 | 87° 18' 25.194" E | 25° 10' 16.541" N |
| P-30 | 87° 18' 24.975" E | 25° 10' 18.167" N |
| P-31 | 87° 18' 24.959" E | 25° 10' 19.793" N |
| P-32 | 87° 18' 24.461" E | 25° 10' 20.606" N |
| P-33 | 87° 18' 23.602" E | 25° 10' 21.177" N |
| P-34 | 87° 18' 22.710" E | 25° 10' 21.577" N |
| P-35 | 87° 18' 19.759" E | 25° 10' 22.824" N |
| P-36 | 87° 18' 18.228" E | 25° 10' 23.701" N |
| P-37 | 87° 18' 16.466" E | 25° 10' 24.711" N |
| P-38 | 87° 18' 15.294" E | 25° 10' 25.502" N |
| P-39 | 87° 18' 14.382" E | 25° 10' 26.317" N |
| P-40 | 87° 18' 13.685" E | 25° 10' 27.131" N |
| P-41 | 87° 18' 12.586" E | 25° 10' 28.759" N |
| P-42 | 87° 18' 11.740" E | 25° 10' 30.386" N |
| P-43 | 87° 18' 11.005" E | 25° 10' 32.013" N |
| P-44 | 87° 18' 10.763" E | 25° 10' 32.826" N |
| P-45 | 87° 18' 10.238" E | 25° 10' 34.534" N |
| P-46 | 87° 18' 9.823" E | 25° 10' 35.267" N |
| P-47 | 87° 18' 8.459" E | 25° 10' 37.204" N |

Provisional Cardinal Points for Mandar Parvat Block

| POINT NO | Longitude (WGS84) | Latitude (WGS84) |
|----------|-------------------|-------------------|
| P-48 | 87° 18' 6.637" E | 25° 10' 39.337" N |
| P-49 | 87° 18' 5.393" E | 25° 10' 40.965" N |
| P-50 | 87° 18' 4.370" E | 25° 10' 42.593" N |
| P-51 | 87° 18' 3.738" E | 25° 10' 44.219" N |
| P-52 | 87° 18' 2.839" E | 25° 10' 47.472" N |
| P-53 | 87° 18' 2.234" E | 25° 10' 48.546" N |
| P-54 | 87° 18' 1.343" E | 25° 10' 49.434" N |
| P-55 | 87° 17' 59.181" E | 25° 10' 51.080" N |
| P-56 | 87° 17' 55.101" E | 25° 10' 53.486" N |
| P-57 | 87° 17' 54.209" E | 25° 10' 53.894" N |
| P-58 | 87° 17' 52.424" E | 25° 10' 54.418" N |
| P-59 | 87° 17' 49.746" E | 25° 10' 55.423" N |
| P-60 | 87° 17' 46.177" E | 25° 10' 56.698" N |
| P-61 | 87° 17' 44.392" E | 25° 10' 57.563" N |
| P-62 | 87° 17' 42.207" E | 25° 10' 58.893" N |
| P-63 | 87° 17' 41.303" E | 25° 10' 59.707" N |
| P-64 | 87° 17' 38.937" E | 25° 11' 2.150" N |
| P-65 | 87° 17' 37.262" E | 25° 11' 3.966" N |
| P-66 | 87° 17' 35.481" E | 25° 11' 6.359" N |
| P-67 | 87° 17' 34.321" E | 25° 11' 9.474" N |
| P-68 | 87° 17' 33.224" E | 25° 11' 11.915" N |
| P-69 | 87° 17' 32.225" E | 25° 11' 13.542" N |
| P-70 | 87° 17' 30.443" E | 25° 11' 15.952" N |
| P-71 | 87° 17' 29.708" E | 25° 11' 16.633" N |
| P-72 | 87° 17' 27.472" E | 25° 11' 18.705" N |
| P-73 | 87° 17' 26.533" E | 25° 11' 20.056" N |
| P-74 | 87° 17' 24.803" E | 25° 11' 23.310" N |
| P-75 | 87° 17' 24.831" E | 25° 11' 26.561" N |
| P-76 | 87° 17' 25.140" E | 25° 11' 28.999" N |
| P-77 | 87° 17' 26.012" E | 25° 11' 31.436" N |
| P-78 | 87° 17' 26.374" E | 25° 11' 33.060" N |
| P-79 | 87° 17' 26.665" E | 25° 11' 35.498" N |
| P-80 | 87° 17' 26.899" E | 25° 11' 37.936" N |
| P-81 | 87° 17' 27.391" E | 25° 11' 40.373" N |
| P-82 | 87° 17' 28.083" E | 25° 11' 41.997" N |
| P-83 | 87° 17' 30.213" E | 25° 11' 44.488" N |
| P-84 | 87° 17' 32.283" E | 25° 11' 47.116" N |
| P-85 | 87° 17' 33.887" E | 25° 11' 49.272" N |
| P-86 | 87° 17' 33.976" E | 25° 11' 50.098" N |
| P-87 | 87° 17' 34.183" E | 25° 11' 52.551" N |
| P-88 | 87° 17' 34.399" E | 25° 11' 54.177" N |
| P-89 | 87° 17' 34.705" E | 25° 11' 55.127" N |
| P-90 | 87° 17' 35.890" E | 25° 11' 56.612" N |
| P-91 | 87° 17' 37.391" E | 25° 11' 57.796" N |
| P-92 | 87° 17' 39.180" E | 25° 11' 58.775" N |
| P-93 | 87° 17' 40.075" E | 25° 11' 59.188" N |
| P-94 | 87° 17' 41.863" E | 25° 11' 59.932" N |

Provisional Cardinal Points for Mandar Parvat Block

| POINT NO | Longitude (WGS84) | Latitude (WGS84) |
|----------|-------------------|-------------------|
| P-95 | 87° 17' 43.652" E | 25° 12' 0.750" N |
| P-96 | 87° 17' 44.546" E | 25° 12' 1.219" N |
| P-97 | 87° 17' 46.427" E | 25° 12' 2.280" N |
| P-98 | 87° 17' 47.157" E | 25° 12' 3.024" N |
| P-99 | 87° 17' 50.793" E | 25° 12' 23.411" N |
| P-100 | 87° 17' 48.861" E | 25° 13' 12.634" N |
| P-101 | 87° 17' 53.962" E | 25° 13' 10.559" N |
| P-102 | 87° 19' 31.454" E | 25° 12' 59.357" N |
| P-103 | 87° 19' 28.547" E | 25° 12' 51.762" N |
| P-104 | 87° 19' 26.075" E | 25° 12' 46.778" N |
| P-105 | 87° 19' 23.225" E | 25° 12' 41.795" N |
| P-106 | 87° 19' 23.782" E | 25° 12' 37.665" N |
| P-107 | 87° 19' 24.521" E | 25° 12' 31.298" N |
| P-108 | 87° 19' 22.991" E | 25° 12' 24.592" N |
| P-109 | 87° 19' 20.131" E | 25° 12' 15.824" N |
| P-110 | 87° 19' 16.517" E | 25° 12' 7.575" N |
| P-111 | 87° 19' 15.660" E | 25° 12' 5.100" N |
| P-112 | 87° 19' 13.659" E | 25° 11' 59.323" N |
| P-113 | 87° 19' 10.048" E | 25° 11' 52.449" N |
| P-114 | 87° 19' 7.763" E | 25° 11' 46.433" N |
| P-115 | 87° 19' 6.240" E | 25° 11' 42.479" N |
| P-116 | 87° 19' 6.613" E | 25° 11' 40.242" N |
| P-117 | 87° 19' 8.498" E | 25° 11' 38.002" N |
| P-118 | 87° 19' 11.895" E | 25° 11' 35.586" N |
| P-119 | 87° 19' 11.321" E | 25° 11' 33.006" N |
| P-120 | 87° 19' 11.316" E | 25° 11' 30.942" N |
| P-121 | 87° 19' 13.769" E | 25° 11' 29.216" N |
| P-122 | 87° 19' 15.086" E | 25° 11' 26.633" N |
| P-123 | 87° 19' 14.697" E | 25° 11' 22.677" N |
| P-124 | 87° 19' 12.055" E | 25° 11' 18.980" N |
| P-125 | 87° 19' 9.191" E | 25° 11' 13.915" N |
| P-126 | 87° 19' 7.247" E | 25° 11' 9.620" N |
| P-127 | 87° 19' 5.768" E | 25° 11' 6.353" N |
| P-128 | 87° 19' 2.347" E | 25° 10' 59.479" N |
| P-129 | 87° 18' 59.122" E | 25° 10' 55.013" N |
| P-130 | 87° 18' 56.844" E | 25° 10' 51.405" N |
| P-131 | 87° 18' 56.459" E | 25° 10' 48.825" N |
| P-132 | 87° 18' 58.534" E | 25° 10' 47.100" N |
| P-133 | 87° 19' 0.039" E | 25° 10' 44.172" N |
| P-134 | 87° 18' 58.895" E | 25° 10' 40.562" N |
| P-135 | 87° 18' 57.560" E | 25° 10' 35.748" N |
| P-136 | 87° 18' 56.409" E | 25° 10' 29.213" N |
| P-137 | 87° 18' 54.118" E | 25° 10' 20.788" N |
| P-138 | 87° 18' 52.781" E | 25° 10' 15.458" N |
| P-139 | 87° 18' 51.824" E | 25° 10' 10.643" N |
| P-140 | 87° 18' 52.383" E | 25° 10' 7.545" N |
| P-141 | 87° 18' 55.213" E | 25° 10' 5.302" N |

Provisional Cardinal Points for Mandar Parvat Block

| POINT NO | Longitude (WGS84) | Latitude (WGS84) |
|----------|-------------------|------------------|
| P-142 | 87° 18' 59.556" E | 25° 10' 3.573" N |
| P-143 | 87° 19' 2.572" E | 25° 10' 0.297" N |
| P-144 | 87° 19' 5.586" E | 25° 9' 56.162" N |
| P-145 | 87° 19' 8.603" E | 25° 9' 53.059" N |
| P-146 | 87° 19' 8.218" E | 25° 9' 50.651" N |
| P-147 | 87° 19' 4.990" E | 25° 9' 44.809" N |
| P-148 | 87° 19' 2.094" E | 25° 9' 39.987" N |
| P-149 | 87° 19' 1.898" E | 25° 9' 39.758" N |
| P-150 | 87° 19' 0.917" E | 25° 9' 39.048" N |
| P-151 | 87° 18' 59.714" E | 25° 9' 38.087" N |
| P-152 | 87° 18' 59.076" E | 25° 9' 38.014" N |
| P-153 | 87° 18' 56.536" E | 25° 9' 37.738" N |