

MAIKI NORTH COAL BLOCK SUMMARY

PART A

Sr. No.	Features	Details
1.	Location	
	Coal Block	Maiki North
	Latitude	23° 21' 37" N - 23° 23' 06" N (Provisional)
	Longitude	81° 23' 20" E - 81° 25' 51" E (Provisional)
	Topo Sheet No.	64E/7
	Coalfield	Sohagpur
	Villages	Jarwahi, Patasi, Jarha, Badkhera, Maiki
	Tehsil/Taluka	Sohagpur
	District	Shahdol
	State	Madhya Pradesh
2.	Connectivity with Block	
	Nearest Rail Head	Shahdol is the nearest railway station, situated in Bilaspur - Katni section of SEC Railway.
	Road	The area is well connected by metal road with Shahdol, District Headquarter located 9.5 km towards North-West. Fair weather jeepable roads also interconnect the small villages.
	Airport	
3.	Area	
	Geological Block Area	10.33 sq.km. (As per shape file; Refer Note No. 3)
	Green Cover	Approx. 4 % (As per FSI plan)
	Area excluding green cover	Approx. 96 % (As per FSI plan)
4.	Climate and Topography	
	Average Annual Rainfall	110 cm
	Temperature (Min. — Max.)	6°C to 45°C
	Local Surface Drainage Channels	There are northerly flowing Patasi and Patparha nalas in central part and north-westerly flowing Garaghat nala in the southernmost part of the block. The local drainage pattern is sub-dendritic.
	Rivers	
5.	Exploration	
	Status	Regionally Explored
	Exploration Agency	GSI
	Total Number of Boreholes with meterage	10 Boreholes; 5885.80 m (GSI).
	Borehole Density	Approx. 1.03 Boreholes/sq.km.
	General Dip of Seams	The beds dip 2° towards ENE.
	General Strike	The general strike of the bed is NNW-SSE.

	Direction				
6.	Coal Seams & Reserve				
	Coal Seams	Thickness Range (m)	Depth Range (m)	Geological Reserve (MT) (Proved)	Grade
	R-V	0.15	10.95 -11.10	-	-
	R-IV	0.95-1.55	12.35-27.98	5.46	E To G
	R-III	1.00-2.33	7.70-39.10	13.12	A To F
	R-II	0.25-1.45	30.30-62.43	5.29	E To F
	R-I	-	-	-	-
	Seam IV	0.12-2.30	389.40-455.30	6.86	A To C
	Seam L2	0.12-0.15	417.35-456.30	0.06	F
	Seam IIIA	2.05-4.65	449.20-532.75	44.45	A To E
	Seam IIIB	0.10-0.65	478.12-536.47	0.79	E
	Seam II	0.01-1.40	472.45-557.70	6.50	C To G
	Seam I	0.15-1.80	521.50-579.50	6.34	B To C
	Seam L1	0.20-0.85	525.58-596.10	6.60	B To F
	Local Seam	0.06-1.10	532.90-627.65	1.70	B To F
		Total		97.17	
7.	Surface Constraints	NA			
8.	Grade of the block	G-7 (Provisional) based on weighted average grade as per data available in GR.			
9.	Decision Support System (DSS) Analysis	Wildlife Habitat(s).-Sloth Bear, Dhole			
10.	Eco Sensitive Zone (ESZ) Analysis	Approx. 13.5 km from the boundary of the tiger corridor between Bandhavgarh and Sanjay Gandhi NP. Approx. 19 km from the boundary of the tiger corridor between Bandhavgarh and Achanakmar. Approx. 22.5 km from the boundary of ESZ of Bandhavgarh.			

Note:

1. The above data is compiled from Geological Report. For clarifications with regard to above data, please refer aforesaid source documents.
2. The boundary of the block has been taken from GR after conversion to WGS84 system by feature matching. The block boundary is provisional and the cardinal points, bounding co-ordinates are approximate.
3. There is a difference in area in the shape file and GR. Area in the shape file is based on feature mapped plan of the block as given in the GR. So, the area is tentative and field DGPS survey is required to ascertain the exact area.
4. The block boundary is provisional and the cardinal points, bounding co-ordinates are approximate. Field DGPS survey is required to ascertain the exact area.

Disclaimer:

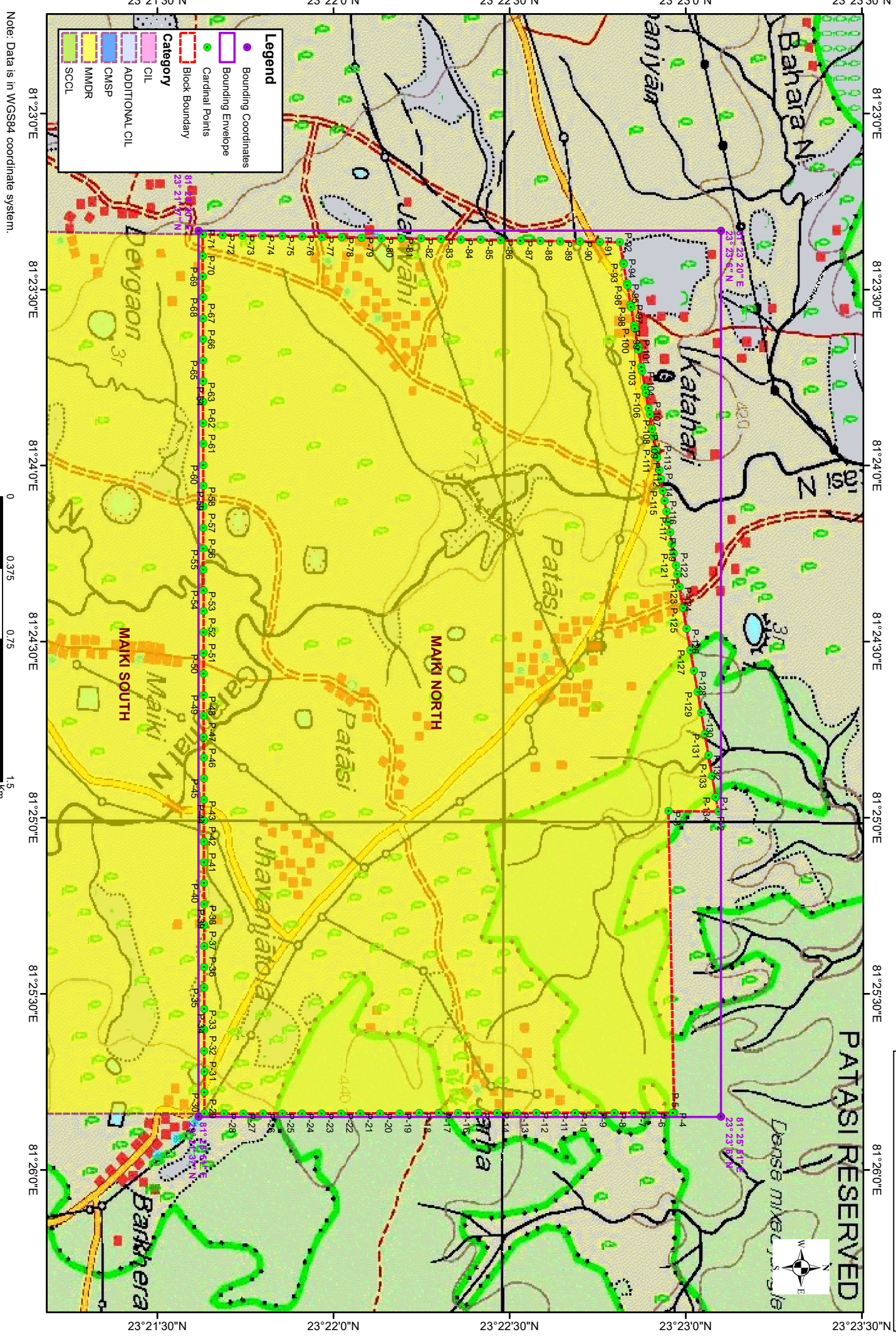
1. The analysis is done on Beta-version (Trial Version) of Decision Support System (DSS) of FSI

/ MOEF.

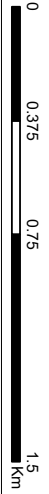
2. The Decision Rules for various parameters of this DSS System are controlled by FSI.
3. CMPDI only runs this DSS to obtain the status of any block based on these Decision Rules.
4. The database of the Decision Rules is updated by FSI from time to time.
5. CMPDI does not own any responsibility for variation in the results which are based on the Decision Rules of the FSI DSS in case of any updation of the database at FSI end.
6. ESZ analysis and tiger habitat/ corridor given here is based on the information available in public domain. Bidders are encouraged to verify this information and any other information additionally available.

Maiki North Block, Sohagpur Coalfield

FOR INTERNAL/RESTRICTED USE ONLY



Note: Data is in WGS84 coordinate system.



Provisional Cardinal Points for MAIKI NORTH Block

POINT NO	Longitude (WGS84)	Latitude (WGS84)
P-1	81° 24' 56.467" E	23° 23' 5.137" N
P-2	81° 24' 58.926" E	23° 23' 5.562" N
P-3	81° 24' 58.894" E	23° 22' 57.043" N
P-4	81° 25' 50.232" E	23° 22' 58.077" N
P-5	81° 25' 50.233" E	23° 22' 57.806" N
P-6	81° 25' 50.240" E	23° 22' 54.481" N
P-7	81° 25' 50.246" E	23° 22' 51.156" N
P-8	81° 25' 50.253" E	23° 22' 47.831" N
P-9	81° 25' 50.260" E	23° 22' 44.506" N
P-10	81° 25' 50.267" E	23° 22' 41.181" N
P-11	81° 25' 50.273" E	23° 22' 37.855" N
P-12	81° 25' 50.280" E	23° 22' 34.530" N
P-13	81° 25' 50.287" E	23° 22' 31.205" N
P-14	81° 25' 50.294" E	23° 22' 27.880" N
P-15	81° 25' 50.300" E	23° 22' 24.555" N
P-16	81° 25' 50.307" E	23° 22' 21.230" N
P-17	81° 25' 50.314" E	23° 22' 17.905" N
P-18	81° 25' 50.321" E	23° 22' 14.580" N
P-19	81° 25' 50.328" E	23° 22' 11.255" N
P-20	81° 25' 50.334" E	23° 22' 7.930" N
P-21	81° 25' 50.341" E	23° 22' 4.605" N
P-22	81° 25' 50.348" E	23° 22' 1.280" N
P-23	81° 25' 50.355" E	23° 21' 57.955" N
P-24	81° 25' 50.361" E	23° 21' 54.629" N
P-25	81° 25' 50.368" E	23° 21' 51.304" N
P-26	81° 25' 50.375" E	23° 21' 47.979" N
P-27	81° 25' 50.382" E	23° 21' 44.654" N
P-28	81° 25' 50.388" E	23° 21' 41.329" N
P-29	81° 25' 50.395" E	23° 21' 38.004" N
P-30	81° 25' 46.830" E	23° 21' 37.998" N
P-31	81° 25' 43.265" E	23° 21' 37.992" N
P-32	81° 25' 39.699" E	23° 21' 37.985" N
P-33	81° 25' 36.134" E	23° 21' 37.979" N
P-34	81° 25' 32.569" E	23° 21' 37.973" N
P-35	81° 25' 29.004" E	23° 21' 37.967" N
P-36	81° 25' 25.438" E	23° 21' 37.960" N
P-37	81° 25' 21.873" E	23° 21' 37.954" N
P-38	81° 25' 18.308" E	23° 21' 37.947" N
P-39	81° 25' 14.742" E	23° 21' 37.941" N
P-40	81° 25' 11.177" E	23° 21' 37.935" N
P-41	81° 25' 7.612" E	23° 21' 37.928" N
P-42	81° 25' 4.047" E	23° 21' 37.922" N
P-43	81° 25' 0.481" E	23° 21' 37.915" N
P-44	81° 24' 56.916" E	23° 21' 37.909" N
P-45	81° 24' 53.351" E	23° 21' 37.902" N
P-46	81° 24' 49.785" E	23° 21' 37.896" N
P-47	81° 24' 46.220" E	23° 21' 37.889" N

Provisional Cardinal Points for MAIKI NORTH Block

P-48	81° 24' 42.655" E	23° 21' 37.882" N
P-49	81° 24' 39.090" E	23° 21' 37.876" N
P-50	81° 24' 35.524" E	23° 21' 37.869" N
P-51	81° 24' 31.959" E	23° 21' 37.863" N
P-52	81° 24' 28.394" E	23° 21' 37.856" N
P-53	81° 24' 24.828" E	23° 21' 37.849" N
P-54	81° 24' 21.263" E	23° 21' 37.842" N
P-55	81° 24' 17.698" E	23° 21' 37.836" N
P-56	81° 24' 14.132" E	23° 21' 37.829" N
P-57	81° 24' 10.567" E	23° 21' 37.822" N
P-58	81° 24' 7.002" E	23° 21' 37.815" N
P-59	81° 24' 3.437" E	23° 21' 37.808" N
P-60	81° 23' 59.871" E	23° 21' 37.802" N
P-61	81° 23' 56.306" E	23° 21' 37.795" N
P-62	81° 23' 52.741" E	23° 21' 37.788" N
P-63	81° 23' 49.176" E	23° 21' 37.781" N
P-64	81° 23' 45.610" E	23° 21' 37.774" N
P-65	81° 23' 42.045" E	23° 21' 37.767" N
P-66	81° 23' 38.480" E	23° 21' 37.760" N
P-67	81° 23' 34.914" E	23° 21' 37.753" N
P-68	81° 23' 31.349" E	23° 21' 37.746" N
P-69	81° 23' 27.784" E	23° 21' 37.739" N
P-70	81° 23' 24.219" E	23° 21' 37.732" N
P-71	81° 23' 20.653" E	23° 21' 37.725" N
P-72	81° 23' 20.715" E	23° 21' 41.108" N
P-73	81° 23' 20.778" E	23° 21' 44.491" N
P-74	81° 23' 20.840" E	23° 21' 47.875" N
P-75	81° 23' 20.902" E	23° 21' 51.258" N
P-76	81° 23' 20.964" E	23° 21' 54.641" N
P-77	81° 23' 21.026" E	23° 21' 58.025" N
P-78	81° 23' 21.088" E	23° 22' 1.408" N
P-79	81° 23' 21.151" E	23° 22' 4.792" N
P-80	81° 23' 21.213" E	23° 22' 8.175" N
P-81	81° 23' 21.275" E	23° 22' 11.558" N
P-82	81° 23' 21.337" E	23° 22' 14.942" N
P-83	81° 23' 21.399" E	23° 22' 18.325" N
P-84	81° 23' 21.461" E	23° 22' 21.709" N
P-85	81° 23' 21.524" E	23° 22' 25.092" N
P-86	81° 23' 21.586" E	23° 22' 28.475" N
P-87	81° 23' 21.648" E	23° 22' 31.859" N
P-88	81° 23' 21.710" E	23° 22' 35.242" N
P-89	81° 23' 21.772" E	23° 22' 38.625" N
P-90	81° 23' 21.834" E	23° 22' 42.009" N
P-91	81° 23' 21.897" E	23° 22' 45.392" N
P-92	81° 23' 21.959" E	23° 22' 48.775" N
P-93	81° 23' 25.488" E	23° 22' 49.387" N
P-94	81° 23' 25.627" E	23° 22' 49.411" N
P-95	81° 23' 29.018" E	23° 22' 49.998" N

Provisional Cardinal Points for MAIKI NORTH Block

P-96	81° 23' 29.295" E	23° 22' 50.046" N
P-97	81° 23' 32.547" E	23° 22' 50.609" N
P-98	81° 23' 32.963" E	23° 22' 50.681" N
P-99	81° 23' 36.076" E	23° 22' 51.221" N
P-100	81° 23' 36.630" E	23° 22' 51.317" N
P-101	81° 23' 39.606" E	23° 22' 51.832" N
P-102	81° 23' 40.298" E	23° 22' 51.952" N
P-103	81° 23' 43.135" E	23° 22' 52.443" N
P-104	81° 23' 43.966" E	23° 22' 52.587" N
P-105	81° 23' 46.664" E	23° 22' 53.054" N
P-106	81° 23' 47.634" E	23° 22' 53.222" N
P-107	81° 23' 50.194" E	23° 22' 53.665" N
P-108	81° 23' 51.302" E	23° 22' 53.857" N
P-109	81° 23' 53.723" E	23° 22' 54.276" N
P-110	81° 23' 54.970" E	23° 22' 54.492" N
P-111	81° 23' 57.253" E	23° 22' 54.887" N
P-112	81° 23' 58.638" E	23° 22' 55.127" N
P-113	81° 24' 0.782" E	23° 22' 55.499" N
P-114	81° 24' 2.306" E	23° 22' 55.762" N
P-115	81° 24' 4.312" E	23° 22' 56.110" N
P-116	81° 24' 5.974" E	23° 22' 56.397" N
P-117	81° 24' 7.841" E	23° 22' 56.721" N
P-118	81° 24' 9.642" E	23° 22' 57.032" N
P-119	81° 24' 11.370" E	23° 22' 57.332" N
P-120	81° 24' 13.310" E	23° 22' 57.667" N
P-121	81° 24' 14.900" E	23° 22' 57.943" N
P-122	81° 24' 16.978" E	23° 22' 58.302" N
P-123	81° 24' 18.429" E	23° 22' 58.554" N
P-124	81° 24' 20.646" E	23° 22' 58.937" N
P-125	81° 24' 24.228" E	23° 22' 59.557" N
P-126	81° 24' 27.810" E	23° 23' 0.177" N
P-127	81° 24' 31.392" E	23° 23' 0.797" N
P-128	81° 24' 34.974" E	23° 23' 1.417" N
P-129	81° 24' 38.556" E	23° 23' 2.037" N
P-130	81° 24' 42.138" E	23° 23' 2.657" N
P-131	81° 24' 45.720" E	23° 23' 3.277" N
P-132	81° 24' 49.303" E	23° 23' 3.897" N
P-133	81° 24' 52.885" E	23° 23' 4.517" N

Note: The provisional cardinal points are in WGS84 coordinate system. These points are extracted through ArcGIS software after georeferencing of block boundary and onground DGPS survey is required to ascertain the exact location of the points.