

MANDLA NORTH COAL BLOCK SUMMARY

PART A

Sr. No.	Features	Details
1.	Location	
	Coal Block	Mandla North
	Latitude	22° 13' 20" N - 22° 14' 49" N (Provisional)
	Longitude	78° 51' 06" E - 78° 54' 22" E (Provisional)
	Topo Sheet No.	55 J/16
	<i>The approved mining plan of Mandla North overlaps partly with adjacent Brahmapuri (CMSP) block and Vishnupuri (CIL) block. The overlapping issue needs to be resolved before issue of vesting order.</i>	
	Coalfield	Pench Kanhan Valley
	Villages	Shankarpur, Deori, Chhinda, Bichhuwa Pathar, Sawla Dhana, Jobnala
	Tehsil/Taluka	Parasia
	District	Chhindwara
	State	Madhya Pradesh
2.	Connectivity with Block	
	Nearest Rail Head	The nearest railway siding from the block is available at Rawanwara Colliery (Narrow gauge, at 12 km) and at Khirsadoh (Broad gauge, at 24 km) for coal loading.
	Road	The area is approachable by a metalled road bifurcating from the MP state highway no. 19, one km east of Parasia town. The distance from the bifurcation to Mandla North block is around 23km. The interior parts of the block are approachable only by Jeep/Truck because of rugged terrain.
	Airport	The nearest air strip is located 7 km south of Chhindwara near the road bifurcation to Betul. The distance between the air strip and the block is around 50 km.
3.	Area	
	Geological Block Area	10.3 sq.km. (As per shapefile, Please refer Note#3 below)
	Forest Area	Approx. 83% (As per FSI Map)
	Non-Forest Area	Approx. 17 % (As per FSI Map)
4.	Climate and Topography	
	Average Annual Rainfall	mm –mm
	Temperature (Min. — Max.)	°C-°C
	Local Surface Drainage Channels	Mandla North block is fully covered by Deccan Trap which exhibits its rugged topography in the form of hills, flat plateau and valleys. The rain fed gullies and nallas are common in the area.

	Rivers				
5.	Exploration				
	Status	Explored in Detail			
	Exploration Agency	MECL			
	Total Number of Boreholes with meterage	62 Boreholes; 19704.75 m			
	Borehole Density	Approx. 6 Boreholes/sq.km.			
	General Dip of Seams	The dip of the coal seams is uniformly towards north & north west. The amount varies from 7°-9°.			
	General Strike Direction	The strike of the coal seams in the entire block is nearly E-W, with minor fluctuations in ENE-WSW direction. However, in the eastern half of the area the strike becomes almost NE-SW.			
	Faults	A total of 29 faults have been deciphered within the block. Magnitude of these faults vary from a few meters to as high as 150m.			
6.	Coal Seams & Reserve				
	Coal Seams	Thickness Range (m)	Depth Range (m)	Geological Reserve (MT)	Grade
	Seam-IA	0.02-1.26	184.51-328.74		
	Seam-IB	0.43-2.82	184.47-371.71	24.242	
	Seam-IC	1.82-3.71	188.79-376.41	45.484	
	Seam-II	0.37-3.28	194.02-379.85	30.777	
	Seam-IIIB	0.22-3.19	200.37-386.75	22.456	
	Seam-IIIC	0.23-1.37			
	Seam-IVA	0.34-4.39	211.64-403.60	13.105	
	Seam-IVA1	0.16-1.33			
	Seam-IVA2	0.20-2.31		2.722	
	Seam-IVB	0.25-0.97			
	Seam-VA	1.80-4.92	218.50-415.04	14.016	
	Seam-VA1	0.48-4.70		30.6	
	Seam-VA2	0.20-3.90			
	Seam-VB	0.36-3.07	222.70-418.98	7.093	
	Seam-VB1	0.17-2.23		4.883	
	Seam-VB2	0.24-1.18			
	Seam-VC	0.17-0.58			
		Total		195.378	
	Average quality of ROM coal is D/E as per mining plan. Grade of coal is not given in GR/Mining Plan for total coal of the block.				
7.	Surface Constraints	As per GR, around 75% of the block falls under Thanori Reserved forest.			
8.	Grade of the block	G7 (Provisional) based on calculated weighted average grade of adjacent Mandla South and Brahampuri (CMSP) blocks.			

9.	Decision Support System (DSS) Analysis	Hydrology: Polygon is within 250m of wetland.(Reservoir-17.3)
10.	Eco Sensitive Zone (ESZ) Analysis	The ESZ boundary of Panchamarhi Biosphere is located Approx.16 km from the N-W block boundary. The Pench-Satpura tiger corridor is located approx. 29 km from the S-W block boundary.
11.	CBA Land Acquisition Status	No information available.

PART B

Sr. No.	Features	Details
1.	Previous Allocation	
	Name of Allocatee	Jaipraskash Associates Ltd.
	Address	'JA' House, 63, Basant Lok, Vasant Vihar, New Delhi-110057
2.	Status of Mineral Exploitation	
	Method of Mining	Underground Mining with Bord & Pillar
	Coal Extracted	-Nil-
	Mine Plan Extraction Rate	1.5 MTPA
3.	Status of Clearances/Approvals	
	Mining Plan (Reference to Grant)	No.10316/21/2008-CA-I dated 7/01/2009
	Forest Clearance(Reference to Grant)	F No.8-59/2009-FC dated 18/10/2012
	Environmental Clearance(Reference to Grant)	No. J-11015/1238/2007-IA.Ii(M) dated 15/02/2012
	Mining Lease (Reference to Grant)	Dated 06.03.2013
	Land Required	1066.394 Ha as per Annexure-1 submitted by the prior allottee
	Land Acquired	921.006 Ha as per Annexure-I submitted by the prior allottee
	R&R Plan Achievement	Total No. of PAF/PAP -179 as per Annexure-1 out of required 259

Note:

- The above data is compiled from Geological Report, Mining Plan and the data furnished by the prior allottee in Annexure-I/II, as available. For clarifications with regard to above data, please refer aforesaid source documents.
- The boundary of the block has been taken from GR after conversion to WGS84 system by feature matching. The block boundary is provisional and the cardinal points, bounding co-ordinates are approximate.
- There is a difference in area in the shape file and GR. Area in the shape file is based on feature mapped plan of the block as given in the GR. So, the area is tentative and field DGPS survey is required to ascertain the exact area.

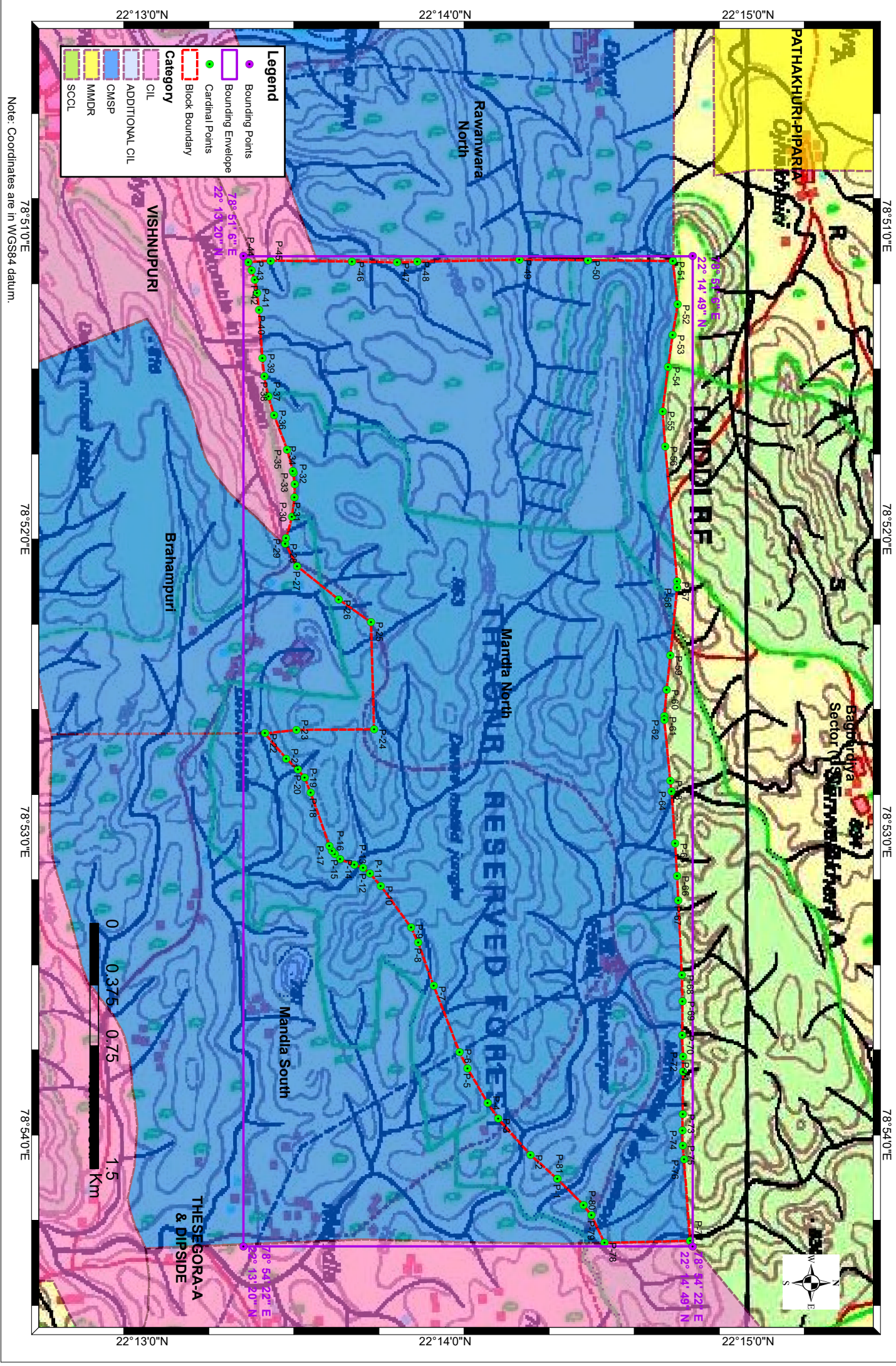
Disclaimer:

- The analysis is done on Beta-version (Trial Version) of Decision Support System (DSS) of FSI/MOEF.
- The Decision Rules for various parameters of this DSS System are controlled by FSI.

3. CMPDI only runs this DSS to obtain the status of any block based on these Decision Rules.
4. The database of the Decision Rules is updated by FSI from time to time.
5. CMPDI does not own any responsibility for variation in the results which are based on the decision Rules of the FSI DSS in case of any updation of the database at FSI end.
6. ESZ analysis and tiger habitat/ corridor given here is based on the information available in public domain. Bidders are encouraged to verify this information and any other information additionally available.

Mandla North Block, Pench Kanhan Tawa Coalfield

FOR INTERNAL/RESTRICTED USE ONLY



Note: Coordinates are in WGS84 datum.

Provisional Cardinal Points for Mandla North Block

POINT NO	Longitude (WGS84)	Latitude (WGS84)
P-1	78° 54' 8.645" E	22° 14' 22.181" N
P-2	78° 54' 3.829" E	22° 14' 16.841" N
P-3	78° 53' 56.659" E	22° 14' 10.442" N
P-4	78° 53' 53.641" E	22° 14' 8.403" N
P-5	78° 53' 46.719" E	22° 14' 4.403" N
P-6	78° 53' 43.563" E	22° 14' 2.828" N
P-7	78° 53' 30.438" E	22° 13' 57.715" N
P-8	78° 53' 21.881" E	22° 13' 54.641" N
P-9	78° 53' 18.863" E	22° 13' 53.221" N
P-10	78° 53' 10.569" E	22° 13' 47.180" N
P-11	78° 53' 8.151" E	22° 13' 45.067" N
P-12	78° 53' 7.071" E	22° 13' 43.699" N
P-13	78° 53' 6.352" E	22° 13' 41.971" N
P-14	78° 53' 5.378" E	22° 13' 39.158" N
P-15	78° 53' 4.333" E	22° 13' 38.076" N
P-16	78° 53' 3.669" E	22° 13' 37.508" N
P-17	78° 53' 2.645" E	22° 13' 37.044" N
P-18	78° 52' 52.194" E	22° 13' 33.342" N
P-19	78° 52' 49.188" E	22° 13' 32.162" N
P-20	78° 52' 47.638" E	22° 13' 30.794" N
P-21	78° 52' 45.424" E	22° 13' 28.497" N
P-22	78° 52' 40.442" E	22° 13' 24.265" N
P-23	78° 52' 39.737" E	22° 13' 30.487" N
P-24	78° 52' 39.637" E	22° 13' 45.898" N
P-25	78° 52' 18.403" E	22° 13' 45.282" N
P-26	78° 52' 13.936" E	22° 13' 38.884" N
P-27	78° 52' 7.299" E	22° 13' 30.616" N
P-28	78° 52' 2.811" E	22° 13' 28.267" N
P-29	78° 52' 1.814" E	22° 13' 28.438" N
P-30	78° 51' 57.567" E	22° 13' 29.638" N
P-31	78° 51' 53.689" E	22° 13' 30.133" N
P-32	78° 51' 51.034" E	22° 13' 30.174" N
P-33	78° 51' 48.865" E	22° 13' 29.936" N
P-34	78° 51' 48.427" E	22° 13' 29.785" N
P-35	78° 51' 44.249" E	22° 13' 28.658" N
P-36	78° 51' 37.444" E	22° 13' 26.081" N
P-37	78° 51' 33.729" E	22° 13' 24.939" N
P-38	78° 51' 29.783" E	22° 13' 24.141" N
P-39	78° 51' 26.206" E	22° 13' 23.795" N
P-40	78° 51' 16.580" E	22° 13' 23.087" N
P-41	78° 51' 13.243" E	22° 13' 22.723" N
P-42	78° 51' 10.627" E	22° 13' 22.244" N
P-43	78° 51' 8.758" E	22° 13' 21.649" N
P-44	78° 51' 7.097" E	22° 13' 20.952" N
P-45	78° 51' 6.857" E	22° 13' 25.374" N
P-46	78° 51' 7.016" E	22° 13' 41.519" N
P-47	78° 51' 7.208" E	22° 13' 50.430" N

Provisional Cardinal Points for Mandla North Block

POINT NO	Longitude (WGS84)	Latitude (WGS84)
P-48	78° 51' 7.066" E	22° 13' 54.469" N
P-49	78° 51' 6.655" E	22° 14' 14.690" N
P-50	78° 51' 6.758" E	22° 14' 28.249" N
P-51	78° 51' 6.950" E	22° 14' 45.053" N
P-52	78° 51' 15.536" E	22° 14' 46.005" N
P-53	78° 51' 21.539" E	22° 14' 45.021" N
P-54	78° 51' 27.887" E	22° 14' 44.123" N
P-55	78° 51' 36.660" E	22° 14' 43.034" N
P-56	78° 51' 43.607" E	22° 14' 43.577" N
P-57	78° 52' 10.358" E	22° 14' 45.917" N
P-58	78° 52' 11.605" E	22° 14' 45.917" N
P-59	78° 52' 25.017" E	22° 14' 44.551" N
P-60	78° 52' 31.850" E	22° 14' 43.825" N
P-61	78° 52' 37.045" E	22° 14' 43.361" N
P-62	78° 52' 37.759" E	22° 14' 43.378" N
P-63	78° 52' 49.738" E	22° 14' 44.546" N
P-64	78° 52' 51.862" E	22° 14' 44.784" N
P-65	78° 53' 2.202" E	22° 14' 45.543" N
P-66	78° 53' 8.688" E	22° 14' 45.890" N
P-67	78° 53' 13.559" E	22° 14' 46.151" N
P-68	78° 53' 28.216" E	22° 14' 46.869" N
P-69	78° 53' 33.432" E	22° 14' 47.001" N
P-70	78° 53' 40.174" E	22° 14' 46.927" N
P-71	78° 53' 44.397" E	22° 14' 47.093" N
P-72	78° 53' 47.367" E	22° 14' 47.095" N
P-73	78° 53' 55.834" E	22° 14' 47.018" N
P-74	78° 53' 59.031" E	22° 14' 46.955" N
P-75	78° 54' 2.021" E	22° 14' 47.032" N
P-76	78° 54' 4.800" E	22° 14' 47.289" N
P-77	78° 54' 20.905" E	22° 14' 48.502" N
P-78	78° 54' 21.298" E	22° 14' 31.522" N
P-79	78° 54' 15.842" E	22° 14' 28.941" N
P-80	78° 54' 13.821" E	22° 14' 27.393" N

Cardinal points are extracted from the block boundary shapefile using ArcGIS software and are tentative. DGPS survey is required to ascertain the exact cardinal points.