

## MAJRA COAL BLOCK SUMMARY

### PART A

Sr. No	Features	Details
<b>1. Location</b>		
	Coal Block	<b>Majra</b>
	Latitude	20° 17' 18" - 20° 19' 02" N (Provisional)
	Longitude	78° 59' 13" - 79° 01' 23" E (Provisional)
	Topo Sheet No.	55 L/15 & 55 P/3
	Coalfield	Wardha Valley
	Villages	Majra Chhota, Kondhala, Yensa (As per SOI Toposheet)
	Tehsil/Taluka	Warora
	District	Chandrapur
	State	Maharashtra
<b>2. Connectivity with Block</b>		
	Nearest Rail Head	Warora Railway station is located at about 6 km SSW of the area. Delhi-Chennai Grand Trunk line passes through west of the block at a distance of about 3 km.
	Road	Nagpur-Chandrapur State Highway-84 demarcates eastern limit of the block. Warora township is well connected by all-weather metal road from the block at a distance of about 6 km. Chandrapur district headquarter is located in the south of the block at a distance of about 50 km and is well connected by all-weather metal road as well as by rail.
	Airport	-
<b>3. Area</b>		
	Geological Block Area	6.0 sq.km. (As per shape file, Refer note below)
	Forest Area	Approx. 1% (As per FSI Map)
	Non-Forest Area	Approx. 99% (As per FSI Map)
<b>4. Climate and Topography</b>		
	Average Annual Rainfall	758.9 mm – 1839.1 mm
	Temperature (Min. — Max.)	10°C-48°C
	Local Surface Drainage Channels	No major drainage system has developed in the area except Sonariya Nala, a seasonal nala, flowing towards south-west direction.
	Rivers	-
<b>5. Exploration</b>		
	Status	Explored in Detail
	Exploration Agency	CMPDI
	Total Number of Boreholes with meterage	107 Boreholes; 14299.05 m

	Borehole Density	18 Boreholes/sq.km.			
	General Dip of Seams	Dipping NE at 3°-9° with minor swings.			
	General Strike Direction	NW-SE with minor swings			
<b>6.</b>	<b>Coal Seams &amp; Reserve</b>				
	Coal Seams	Thickness Range (m)	Depth Range (m)	Geological Reserve (MT)	Grade
	Top Section	0.50-1.00			F-G
	Middle Section	0.24-2.78	21.68-302.30	8.939	B-G
	Bottom Section	1.10-4.50	25.90-290.95	22.097	B-F
		<b>Total</b>		<b>31.036</b>	
<b>7.</b>	<b>Surface Constraints</b>	NA			
<b>8.</b>	<b>Grade of the block</b>	G8 (Provisional) based on weighted average grade as per data available in GR.			
<b>9.</b>	<b>Decision Support System (DSS) Analysis</b>	Wildlife Info: Sloth Bear, Great Indian Bustard			
<b>10.</b>	<b>Eco Sensitive Zone (ESZ) Analysis</b>	Approx.23 Km from Tipeswar WLS ESZ.			
<b>11.</b>	<b>CBA Land Acquisition Status</b>	No information available.			

### PART B

Sr. No.	Features	Details (As per information submitted by prior allottee)
<b>1.</b>	<b>Previous Allocation</b>	
	Name and Address of Allocatee	Gondwana Ispat Ltd.
<b>2.</b>	<b>Mine Capacity as per Mining Plan</b>	<b>0.48Mty</b>
<b>3.</b>	<b>Status of Clearances/Approvals</b>	
	Mining Plan/ Mine Closure Plan	Mining plan is approved & Mine closure is pending with Government)
	Forest Clearance	Stage 2 forest clearance is pending
	Environmental Clearance	-
	Mining Lease	Available
	Land Acquisition	0.92 Ha (out side block)
	No. of PAFs as per Mining Plan/ Mine Closure Plan	-
<b>4.</b>	<b>Surface Infrastructure already built, if any.</b>	Nil

**Note:**

1. The above data is compiled from Geological Report, Mining Plan and the data furnished by the prior allottee in Annexure-I/II, as available. For clarifications with regard to above data, please refer aforesaid source documents.
2. The boundary of the block has been taken from GR after conversion to WGS84 system by feature matching. The block boundary is provisional and the cardinal points, bounding co-ordinates are approximate.
3. There is a difference in area in the shape file and GR. Area in the shape file is based on feature mapped plan of the block as given in the GR. So, the area is tentative and field DGPS survey is required to ascertain the exact area.

**Disclaimer:**

1. The analysis is done on Beta-version (Trial Version) of Decision Support System (DSS) of FSI/ MOEF.
2. The Decision Rules for various parameters of this DSS System are controlled by FSI.
3. CMPDI only runs this DSS to obtain the status of any block based on these Decision Rules.
4. The database of the Decision Rules is updated by FSI from time to time.
5. CMPDI does not own any responsibility for variation in the results which are based on the decision Rules of the FSI DSS in case of any update of the database at FSI end.
6. ESZ analysis and tiger habitat/ corridor given here is based on the information available in public domain. Bidders are encouraged to verify this information and any other information additionally available.

20°18'0"N

20°19'0"N

78°59'0"E

79°0'0"E

79°1'0"E

79°1'0"E

### Majra Block, Wardha Valley Coalfield

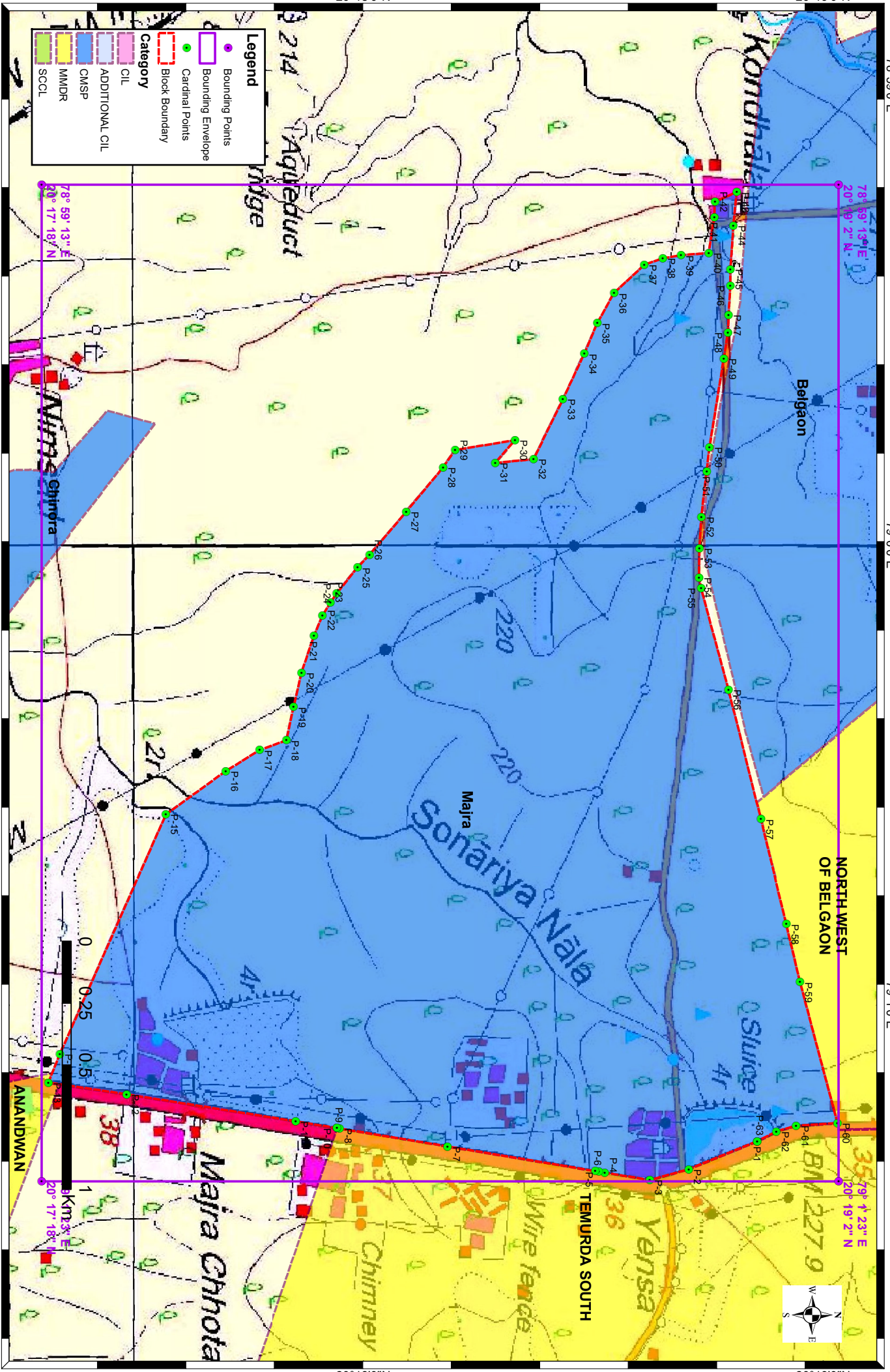
FOR INTERNAL/RESTRICTED USE ONLY

**Legend**

- Bounding Points
- Bounding Envelope
- Cardinal Points
- Block Boundary

**Category**

- CIL
- ADDITIONAL CIL
- CMSP
- MMDR
- SCCL



20°18'0"N

20°19'0"N

78°59'0"E

79°0'0"E

79°1'0"E

79°1'0"E

Note: Coordinates are in WGS84 datum.

**Provisional Cardinal Points for Majra Block**

POINT NO	Longitude (WGS84)	Latitude (WGS84)
P-1	79° 1' 17.756" E	20° 18' 51.388" N
P-2	79° 1' 21.404" E	20° 18' 42.436" N
P-3	79° 1' 22.818" E	20° 18' 37.358" N
P-4	79° 1' 21.852" E	20° 18' 31.477" N
P-5	79° 1' 21.722" E	20° 18' 30.688" N
P-6	79° 1' 21.650" E	20° 18' 30.255" N
P-7	79° 1' 18.435" E	20° 18' 10.976" N
P-8	79° 1' 16.098" E	20° 17' 56.869" N
P-9	79° 1' 16.039" E	20° 17' 56.514" N
P-10	79° 1' 16.039" E	20° 17' 56.514" N
P-11	79° 1' 15.148" E	20° 17' 51.136" N
P-12	79° 1' 11.633" E	20° 17' 29.102" N
P-13	79° 1' 10.087" E	20° 17' 18.882" N
P-14	79° 1' 6.392" E	20° 17' 20.380" N
P-15	79° 0' 35.130" E	20° 17' 34.218" N
P-16	79° 0' 29.474" E	20° 17' 42.034" N
P-17	79° 0' 26.737" E	20° 17' 46.441" N
P-18	79° 0' 25.460" E	20° 17' 49.953" N
P-19	79° 0' 21.117" E	20° 17' 50.882" N
P-20	79° 0' 16.629" E	20° 17' 51.915" N
P-21	79° 0' 11.848" E	20° 17' 53.534" N
P-22	79° 0' 9.184" E	20° 17' 54.635" N
P-23	79° 0' 7.542" E	20° 17' 55.668" N
P-24	79° 0' 6.338" E	20° 17' 56.495" N
P-25	79° 0' 2.907" E	20° 17' 59.215" N
P-26	79° 0' 1.265" E	20° 18' 0.799" N
P-27	78° 59' 55.645" E	20° 18' 5.584" N
P-28	78° 59' 49.855" E	20° 18' 10.396" N
P-29	78° 59' 47.583" E	20° 18' 11.945" N
P-30	78° 59' 46.323" E	20° 18' 19.769" N
P-31	78° 59' 49.280" E	20° 18' 17.187" N
P-32	78° 59' 48.787" E	20° 18' 22.197" N
P-33	78° 59' 40.981" E	20° 18' 26.021" N
P-34	78° 59' 35.027" E	20° 18' 28.818" N
P-35	78° 59' 31.035" E	20° 18' 30.497" N
P-36	78° 59' 27.112" E	20° 18' 32.691" N
P-37	78° 59' 23.438" E	20° 18' 36.638" N
P-38	78° 59' 22.589" E	20° 18' 39.065" N
P-39	78° 59' 22.206" E	20° 18' 41.441" N
P-40	78° 59' 21.877" E	20° 18' 45.056" N
P-41	78° 59' 17.223" E	20° 18' 45.778" N
P-42	78° 59' 15.225" E	20° 18' 45.856" N
P-43	78° 59' 13.939" E	20° 18' 48.696" N
P-44	78° 59' 18.346" E	20° 18' 48.257" N
P-45	78° 59' 24.039" E	20° 18' 47.870" N
P-46	78° 59' 26.147" E	20° 18' 47.871" N
P-47	78° 59' 29.997" E	20° 18' 47.647" N

### **Provisional Cardinal Points for Majra Block**

POINT NO	Longitude (WGS84)	Latitude (WGS84)
P-48	78° 59' 32.278" E	20° 18' 47.561" N
P-49	78° 59' 35.681" E	20° 18' 47.011" N
P-50	78° 59' 47.250" E	20° 18' 45.152" N
P-51	78° 59' 50.353" E	20° 18' 44.774" N
P-52	78° 59' 56.338" E	20° 18' 44.085" N
P-53	79° 0' 0.389" E	20° 18' 43.844" N
P-54	79° 0' 4.221" E	20° 18' 43.775" N
P-55	79° 0' 5.608" E	20° 18' 44.051" N
P-56	79° 0' 18.857" E	20° 18' 47.631" N
P-57	79° 0' 35.746" E	20° 18' 51.866" N
P-58	79° 0' 49.442" E	20° 18' 55.166" N
P-59	79° 0' 56.960" E	20° 18' 56.960" N
P-60	79° 1' 15.385" E	20° 19' 1.847" N
P-61	79° 1' 15.749" E	20° 18' 56.467" N
P-62	79° 1' 16.479" E	20° 18' 53.885" N

Cardinal points are extracted from the block boundary shapefile using ArcGIS software and are tentative. DGPS survey is required to ascertain the exact cardinal points.