

Lalgarh North Coal Block Summary
PART A

Sr. No.	Features	Details
1.	Location	
	Coal Block	Lalgarh North Coal Block
	Latitude	23° 47' 58" N - 24° 48' 41" N (Provisional)
	Longitude	85° 38' 00" E - 85° 41' 07" E (Provisional)
	Topo Sheet No.	Toposheet No. 73 E/9
	Coalfield	West Bokaro Coalfield
	Villages	Karipahtoli, Daniya (as per SOI toposheet)
	Tehsil/Taluka	-
	District	Hazaribagh
	State	Jharkhand
2.	Connectivity with Block	
	Nearest Rail Head	The Gomoh-Barkakana Loop Line of Eastern Railway passes through eastern part of the block. The Daniya Railway station on this line is located within the block.
	Road	The block is also approachable by road. The roads branching off from National Highway-33 near Kuju & Charhi lead to the block. The communication within the block is very poor.
	Airport	The Birsa Munda Airport, located at the state capital Ranchi, is the nearest airport.
3.	Area	
	Geological Block Area	2.91 sq km (As per shape file. Refer Note No. 3)
	Forest Area	Approx. 33 % (as per FSI map)
	Non-Forest Area	Approx. 67 % (as per FSI map)
4.	Climate and Topography	
	Average Annual Rainfall	Annual rainfall varies between 120 cm and 140 cm.
	Temperature (Min. — Max.)	10°C - 45°C
	Local Surface Drainage Channels	The drainage in the block is mainly controlled by the easterly flowing Bokaro River, which flows in the eastern part of the block. Chutua Nala flowing from west to east and joins Bokaro river in the south. The other local nala flows from north to south and drains into Bokaro river in the east.
	Rivers	Bokaro River, Chutua nala
5.	Exploration	
	Status	Explored
	Exploration Agency	MECL and IBM

	Total Number of Boreholes with meterage	24 boreholes & 2965.10 m				
	Borehole Density	8 boreholes per sq km				
	General Dip of Seams	The beds dip southerly with amount varying from 25° to 30°				
	General Strike Direction	The general strike of the beds remain almost East-West with a swing.				
6.	Coal Seams & Reserve					
	Coal Seams	Thickness Range	Depth Range (m)	Indicated Reserves (mt)	Proved Reserves (mt)	Grade
	XII	2.53		-	-	W-IV TO UG
	XI	Not developed		-	-	W-IV
	X A	1.15		-	-	UG
	X	3.69		-	-	W-IV
	IX A	F		-	-	Unworkable
	IX			-	-	Unworkable
	VIII C			-	-	S-II
	VIII B			-	-	Unworkable
	VIII A			-	-	W-III
	VIII			-	-	
	VII C	0.20-0.72		-	-	Unworkable
	VII B	0.55		-	-	
	VII A	0.86		-	-	
	VII + VI + VA	OC	3.40-4.97	0.4323	0.4001	W-III
				UG	0.5881	
	V	OC	1.97-5.25	0.2869	1.3236	W-III TO UG
				UG	0.3637	
	IV	OC	0.88-6.81	0.1686	1.8610	W-IV TO UG
				UG	0.3284	
	III	OC	0.48-6.48	0.3616	1.7675	W-III TO UG
				UG	0.4795	
	II A	0.19-2.56				UG
	II	OC	0.24-3.02	-	-	W-III TO UG
				UG	0.9788	
	I	OC	0.33-2.25	-	-	UG
				UG	0.7591	
	0	1.35		-	-	
	Sub-Total	OC		1.2494	5.3522	6.6016
		UG		3.4976	16.9392	20.4368
	Total			27.0384		
7.	Surface Constraints	Rail line passes through the block. Bokaro river in the south-eastern corner.				
8.	Grade of the block	W-V (Provisional) based on weighted average grade as per grade-wise data available in GR.				
9.	Decision Support System (DSS) Analysis	Very Dense Forest Info: VDF>1sqkm				
10.	Eco Sensitive Zone (ESZ) Analysis	Approx. 32.1 km to the Hazaribagh ESZ from the North-western block boundary and 42 km to the Parasnath ESZ from the North-eastern block boundary				

PART B

Sr. No.	Features	Details
1.	Previous Allocation	
	Name and Address of Allocatee	Domco Smokeless Fuel Pvt. Ltd.
2.	Target mine capacity as per Mining Plan	Mining Plan not available
	Tentative Peak Rated Mine Capacity	1 MTPA
3.	Status of Clearances/Approvals	
	Mining Plan/ Mine Closure Plan	NA
	Forest Clearance	NA
	Environmental Clearance	NA
	Mining Lease	NA
	Land Acquisition	NA
	No. of PAFs as per Mining Plan/ Mine Closure Plan	NA
4.	Surface Infrastructure already built, if any.	NA

Note:

1. The above data is compiled from Geological Report, Mining Plan and the data furnished by the prior allottee in Annexure-I/II, as available. For clarifications with regard to above data, please refer aforesaid source documents.
2. The boundary of the block has been taken from GR after conversion to WGS84 system by feature matching. The block boundary is provisional and the cardinal points, bounding co-ordinates are approximate.
3. There may be a difference in area in the shape file and GR. Area in the shape file is based on feature mapped plan of the block as given in the GR. So, the area is tentative and field DGPS survey is required to ascertain the exact area.
4. The summary sheet has been prepared based on the available GR data and may change with the additional Geological Information as and when revised/updated. Geological Grades as available in GRs has been provided.

Disclaimer:

1. The analysis is done on Beta-version (Trial Version) of Decision Support System (DSS) of FSI / MOEF.
2. The Decision Rules for various parameters of this DSS System are controlled by FSI.
3. CMPDI only runs this DSS to obtain the status of any block based on these Decision Rules.
4. The database of the Decision Rules is updated by FSI from time to time.
5. CMPDI does not own any responsibility for variation in the results which are based on the Decision Rules of the FSI DSS in case of any updation of the database at FSI end.
6. ESZ analysis and tiger habitat/ corridor given here is based on the information available in public domain. Bidders are encouraged to verify this information and any other information additionally available.

85°38'0"E 85°39'0"E 85°40'0"E 85°41'0"E

Lalgarth (North)

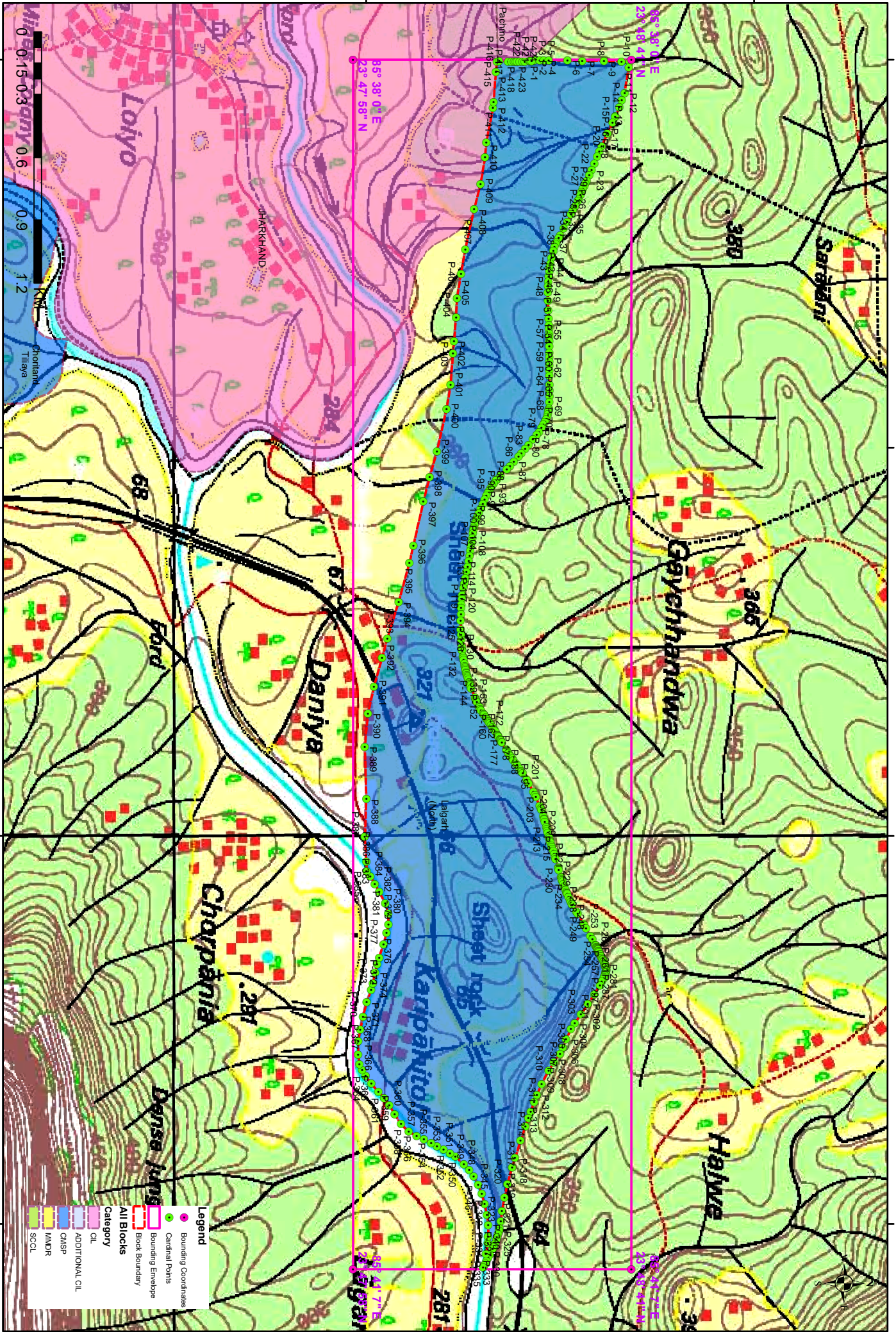
FOR INTERNAL/RESTRICTED USE ONLY

23°49'0"N

23°48'0"N

23°49'0"N

23°48'0"N



NO: Provisional coordinates are provisional in WGS84 System

85°39'0"E

85°40'0"E

85°41'0"E

Legend

- Bounding Coordinates
- Cardinal Points
- Bounding Envelope
- Block Boundary
- All Blocks**
- Category**
- Oil
- Additional Oil
- GMSF
- IMMR
- SCOL



Provisional Cardinal Points for Lalgah (North) Block

POINT NO	Longitude (WGS84)	Latitude (WGS84)
P-1	85° 38' 0.163" E	23° 48' 25.575" N
P-2	85° 38' 0.145" E	23° 48' 26.000" N
P-3	85° 38' 0.079" E	23° 48' 26.845" N
P-4	85° 38' 0.064" E	23° 48' 27.438" N
P-5	85° 38' 0.070" E	23° 48' 28.215" N
P-6	85° 38' 0.116" E	23° 48' 31.144" N
P-7	85° 38' 0.152" E	23° 48' 33.429" N
P-8	85° 38' 0.205" E	23° 48' 36.797" N
P-9	85° 38' 0.247" E	23° 48' 39.494" N
P-10	85° 38' 0.267" E	23° 48' 40.766" N
P-11	85° 38' 1.197" E	23° 48' 40.614" N
P-12	85° 38' 5.145" E	23° 48' 39.965" N
P-13	85° 38' 6.227" E	23° 48' 39.542" N
P-14	85° 38' 7.404" E	23° 48' 39.160" N
P-15	85° 38' 8.762" E	23° 48' 38.524" N
P-16	85° 38' 8.826" E	23° 48' 38.494" N
P-17	85° 38' 9.720" E	23° 48' 38.074" N
P-18	85° 38' 11.378" E	23° 48' 37.350" N
P-19	85° 38' 13.359" E	23° 48' 36.439" N
P-20	85° 38' 14.150" E	23° 48' 36.072" N
P-21	85° 38' 15.019" E	23° 48' 35.726" N
P-22	85° 38' 16.056" E	23° 48' 35.314" N
P-23	85° 38' 17.081" E	23° 48' 34.860" N
P-24	85° 38' 17.875" E	23° 48' 34.495" N
P-25	85° 38' 18.715" E	23° 48' 34.092" N
P-26	85° 38' 19.121" E	23° 48' 33.897" N
P-27	85° 38' 19.488" E	23° 48' 33.721" N
P-28	85° 38' 19.976" E	23° 48' 33.500" N
P-29	85° 38' 20.444" E	23° 48' 33.314" N
P-30	85° 38' 20.880" E	23° 48' 33.141" N
P-31	85° 38' 21.562" E	23° 48' 32.871" N
P-32	85° 38' 21.835" E	23° 48' 32.762" N
P-33	85° 38' 22.636" E	23° 48' 32.331" N
P-34	85° 38' 23.314" E	23° 48' 31.965" N
P-35	85° 38' 23.854" E	23° 48' 31.696" N
P-36	85° 38' 25.095" E	23° 48' 31.078" N
P-37	85° 38' 26.111" E	23° 48' 30.556" N
P-38	85° 38' 27.130" E	23° 48' 30.021" N
P-39	85° 38' 27.574" E	23° 48' 29.780" N
P-40	85° 38' 28.270" E	23° 48' 29.415" N
P-41	85° 38' 28.482" E	23° 48' 29.305" N
P-42	85° 38' 28.944" E	23° 48' 29.135" N
P-43	85° 38' 29.536" E	23° 48' 28.936" N
P-44	85° 38' 30.578" E	23° 48' 28.654" N
P-45	85° 38' 31.473" E	23° 48' 28.475" N
P-46	85° 38' 32.168" E	23° 48' 28.370" N
P-47	85° 38' 32.706" E	23° 48' 28.310" N

Provisional Cardinal Points for Lalgah (North) Block

POINT NO	Longitude (WGS84)	Latitude (WGS84)
P-48	85° 38' 33.525" E	23° 48' 28.238" N
P-49	85° 38' 34.310" E	23° 48' 28.173" N
P-50	85° 38' 35.049" E	23° 48' 28.129" N
P-51	85° 38' 35.978" E	23° 48' 28.089" N
P-52	85° 38' 37.268" E	23° 48' 28.121" N
P-53	85° 38' 38.761" E	23° 48' 28.173" N
P-54	85° 38' 40.037" E	23° 48' 28.225" N
P-55	85° 38' 41.001" E	23° 48' 28.259" N
P-56	85° 38' 41.681" E	23° 48' 28.280" N
P-57	85° 38' 42.344" E	23° 48' 28.300" N
P-58	85° 38' 42.814" E	23° 48' 28.315" N
P-59	85° 38' 43.565" E	23° 48' 28.315" N
P-60	85° 38' 44.266" E	23° 48' 28.308" N
P-61	85° 38' 45.293" E	23° 48' 28.297" N
P-62	85° 38' 46.042" E	23° 48' 28.301" N
P-63	85° 38' 46.650" E	23° 48' 28.304" N
P-64	85° 38' 47.340" E	23° 48' 28.308" N
P-65	85° 38' 48.088" E	23° 48' 28.312" N
P-66	85° 38' 48.880" E	23° 48' 28.330" N
P-67	85° 38' 50.227" E	23° 48' 28.365" N
P-68	85° 38' 51.152" E	23° 48' 28.376" N
P-69	85° 38' 52.046" E	23° 48' 28.378" N
P-70	85° 38' 52.932" E	23° 48' 28.326" N
P-71	85° 38' 53.916" E	23° 48' 28.249" N
P-72	85° 38' 54.107" E	23° 48' 28.232" N
P-73	85° 38' 54.444" E	23° 48' 28.160" N
P-74	85° 38' 54.847" E	23° 48' 28.073" N
P-75	85° 38' 55.168" E	23° 48' 28.004" N
P-76	85° 38' 55.579" E	23° 48' 27.825" N
P-77	85° 38' 56.038" E	23° 48' 27.626" N
P-78	85° 38' 56.364" E	23° 48' 27.429" N
P-79	85° 38' 56.939" E	23° 48' 27.082" N
P-80	85° 38' 57.539" E	23° 48' 26.720" N
P-81	85° 38' 57.969" E	23° 48' 26.388" N
P-82	85° 38' 58.705" E	23° 48' 25.820" N
P-83	85° 38' 59.523" E	23° 48' 25.138" N
P-84	85° 39' 0.186" E	23° 48' 24.568" N
P-85	85° 39' 0.850" E	23° 48' 23.993" N
P-86	85° 39' 1.359" E	23° 48' 23.542" N
P-87	85° 39' 2.143" E	23° 48' 22.846" N
P-88	85° 39' 2.793" E	23° 48' 22.239" N
P-89	85° 39' 3.307" E	23° 48' 21.756" N
P-90	85° 39' 4.269" E	23° 48' 20.792" N
P-91	85° 39' 4.920" E	23° 48' 20.174" N
P-92	85° 39' 5.061" E	23° 48' 20.041" N
P-93	85° 39' 5.475" E	23° 48' 19.761" N
P-94	85° 39' 5.909" E	23° 48' 19.472" N

Provisional Cardinal Points for Lalgah (North) Block

POINT NO	Longitude (WGS84)	Latitude (WGS84)
P-95	85° 39' 6.331" E	23° 48' 19.204" N
P-96	85° 39' 6.662" E	23° 48' 18.994" N
P-97	85° 39' 6.954" E	23° 48' 18.819" N
P-98	85° 39' 7.442" E	23° 48' 18.589" N
P-99	85° 39' 8.000" E	23° 48' 18.325" N
P-100	85° 39' 8.685" E	23° 48' 18.024" N
P-101	85° 39' 9.413" E	23° 48' 17.717" N
P-102	85° 39' 10.094" E	23° 48' 17.430" N
P-103	85° 39' 10.683" E	23° 48' 17.196" N
P-104	85° 39' 11.102" E	23° 48' 17.039" N
P-105	85° 39' 11.537" E	23° 48' 16.875" N
P-106	85° 39' 11.842" E	23° 48' 16.791" N
P-107	85° 39' 12.323" E	23° 48' 16.660" N
P-108	85° 39' 12.751" E	23° 48' 16.573" N
P-109	85° 39' 13.219" E	23° 48' 16.509" N
P-110	85° 39' 13.986" E	23° 48' 16.404" N
P-111	85° 39' 14.640" E	23° 48' 16.312" N
P-112	85° 39' 15.250" E	23° 48' 16.221" N
P-113	85° 39' 15.915" E	23° 48' 16.121" N
P-114	85° 39' 16.744" E	23° 48' 15.998" N
P-115	85° 39' 17.469" E	23° 48' 15.867" N
P-116	85° 39' 18.401" E	23° 48' 15.690" N
P-117	85° 39' 19.225" E	23° 48' 15.534" N
P-118	85° 39' 20.155" E	23° 48' 15.346" N
P-119	85° 39' 21.039" E	23° 48' 15.163" N
P-120	85° 39' 21.641" E	23° 48' 15.053" N
P-121	85° 39' 22.773" E	23° 48' 14.858" N
P-122	85° 39' 23.355" E	23° 48' 14.789" N
P-123	85° 39' 24.229" E	23° 48' 14.710" N
P-124	85° 39' 24.784" E	23° 48' 14.689" N
P-125	85° 39' 25.753" E	23° 48' 14.666" N
P-126	85° 39' 26.770" E	23° 48' 14.650" N
P-127	85° 39' 28.098" E	23° 48' 14.646" N
P-128	85° 39' 28.932" E	23° 48' 14.678" N
P-129	85° 39' 29.660" E	23° 48' 14.706" N
P-130	85° 39' 30.739" E	23° 48' 14.802" N
P-131	85° 39' 31.226" E	23° 48' 14.846" N
P-132	85° 39' 31.413" E	23° 48' 14.832" N
P-133	85° 39' 32.219" E	23° 48' 14.983" N
P-134	85° 39' 32.331" E	23° 48' 15.004" N
P-135	85° 39' 32.489" E	23° 48' 15.034" N
P-136	85° 39' 32.727" E	23° 48' 15.078" N
P-137	85° 39' 33.390" E	23° 48' 15.203" N
P-138	85° 39' 33.698" E	23° 48' 15.261" N
P-139	85° 39' 33.917" E	23° 48' 15.302" N
P-140	85° 39' 34.125" E	23° 48' 15.341" N
P-141	85° 39' 34.375" E	23° 48' 15.387" N

Provisional Cardinal Points for Lalgah (North) Block

POINT NO	Longitude (WGS84)	Latitude (WGS84)
P-142	85° 39' 34.727" E	23° 48' 15.481" N
P-143	85° 39' 34.887" E	23° 48' 15.523" N
P-144	85° 39' 35.136" E	23° 48' 15.589" N
P-145	85° 39' 35.350" E	23° 48' 15.645" N
P-146	85° 39' 35.534" E	23° 48' 15.694" N
P-147	85° 39' 35.865" E	23° 48' 15.787" N
P-148	85° 39' 36.235" E	23° 48' 15.914" N
P-149	85° 39' 36.375" E	23° 48' 15.962" N
P-150	85° 39' 36.509" E	23° 48' 16.008" N
P-151	85° 39' 36.747" E	23° 48' 16.090" N
P-152	85° 39' 37.256" E	23° 48' 16.265" N
P-153	85° 39' 38.593" E	23° 48' 16.821" N
P-154	85° 39' 38.833" E	23° 48' 16.921" N
P-155	85° 39' 38.965" E	23° 48' 16.975" N
P-156	85° 39' 39.082" E	23° 48' 17.026" N
P-157	85° 39' 39.299" E	23° 48' 17.131" N
P-158	85° 39' 39.998" E	23° 48' 17.466" N
P-159	85° 39' 40.116" E	23° 48' 17.523" N
P-160	85° 39' 40.335" E	23° 48' 17.628" N
P-161	85° 39' 40.589" E	23° 48' 17.791" N
P-162	85° 39' 41.054" E	23° 48' 18.091" N
P-163	85° 39' 41.203" E	23° 48' 18.187" N
P-164	85° 39' 41.324" E	23° 48' 18.265" N
P-165	85° 39' 41.716" E	23° 48' 18.517" N
P-166	85° 39' 41.859" E	23° 48' 18.616" N
P-167	85° 39' 41.976" E	23° 48' 18.698" N
P-168	85° 39' 42.208" E	23° 48' 18.860" N
P-169	85° 39' 42.334" E	23° 48' 18.949" N
P-170	85° 39' 42.450" E	23° 48' 19.030" N
P-171	85° 39' 42.603" E	23° 48' 19.138" N
P-172	85° 39' 42.899" E	23° 48' 19.344" N
P-173	85° 39' 43.231" E	23° 48' 19.558" N
P-174	85° 39' 43.499" E	23° 48' 19.731" N
P-175	85° 39' 43.707" E	23° 48' 19.865" N
P-176	85° 39' 43.908" E	23° 48' 19.995" N
P-177	85° 39' 44.336" E	23° 48' 20.262" N
P-178	85° 39' 44.418" E	23° 48' 20.310" N
P-179	85° 39' 44.479" E	23° 48' 20.345" N
P-180	85° 39' 44.560" E	23° 48' 20.391" N
P-181	85° 39' 44.711" E	23° 48' 20.479" N
P-182	85° 39' 45.075" E	23° 48' 20.688" N
P-183	85° 39' 45.131" E	23° 48' 20.720" N
P-184	85° 39' 45.207" E	23° 48' 20.765" N
P-185	85° 39' 45.285" E	23° 48' 20.809" N
P-186	85° 39' 45.410" E	23° 48' 20.881" N
P-187	85° 39' 45.606" E	23° 48' 20.998" N
P-188	85° 39' 46.650" E	23° 48' 21.660" N

Provisional Cardinal Points for Lalgah (North) Block

POINT NO	Longitude (WGS84)	Latitude (WGS84)
P-189	85° 39' 46.762" E	23° 48' 21.731" N
P-190	85° 39' 47.212" E	23° 48' 22.016" N
P-191	85° 39' 47.500" E	23° 48' 22.199" N
P-192	85° 39' 47.695" E	23° 48' 22.341" N
P-193	85° 39' 48.062" E	23° 48' 22.606" N
P-194	85° 39' 48.291" E	23° 48' 22.772" N
P-195	85° 39' 48.843" E	23° 48' 23.172" N
P-196	85° 39' 49.069" E	23° 48' 23.336" N
P-197	85° 39' 49.599" E	23° 48' 23.720" N
P-198	85° 39' 49.976" E	23° 48' 23.963" N
P-199	85° 39' 50.127" E	23° 48' 24.060" N
P-200	85° 39' 50.360" E	23° 48' 24.210" N
P-201	85° 39' 51.326" E	23° 48' 24.829" N
P-202	85° 39' 51.885" E	23° 48' 25.140" N
P-203	85° 39' 53.155" E	23° 48' 25.826" N
P-204	85° 39' 53.702" E	23° 48' 26.111" N
P-205	85° 39' 53.947" E	23° 48' 26.237" N
P-206	85° 39' 55.323" E	23° 48' 26.821" N
P-207	85° 39' 55.727" E	23° 48' 26.993" N
P-208	85° 39' 55.970" E	23° 48' 27.090" N
P-209	85° 39' 56.981" E	23° 48' 27.401" N
P-210	85° 39' 57.343" E	23° 48' 27.512" N
P-211	85° 39' 57.492" E	23° 48' 27.557" N
P-212	85° 39' 57.796" E	23° 48' 27.646" N
P-213	85° 39' 58.614" E	23° 48' 27.854" N
P-214	85° 39' 58.925" E	23° 48' 27.933" N
P-215	85° 39' 59.203" E	23° 48' 28.003" N
P-216	85° 39' 59.494" E	23° 48' 28.077" N
P-217	85° 40' 0.103" E	23° 48' 28.237" N
P-218	85° 40' 0.345" E	23° 48' 28.312" N
P-219	85° 40' 0.609" E	23° 48' 28.394" N
P-220	85° 40' 0.789" E	23° 48' 28.450" N
P-221	85° 40' 1.020" E	23° 48' 28.521" N
P-222	85° 40' 1.487" E	23° 48' 28.666" N
P-223	85° 40' 1.667" E	23° 48' 28.721" N
P-224	85° 40' 1.970" E	23° 48' 28.815" N
P-225	85° 40' 2.354" E	23° 48' 28.933" N
P-226	85° 40' 2.765" E	23° 48' 29.060" N
P-227	85° 40' 3.310" E	23° 48' 29.227" N
P-228	85° 40' 3.545" E	23° 48' 29.299" N
P-229	85° 40' 4.826" E	23° 48' 29.686" N
P-230	85° 40' 4.947" E	23° 48' 29.721" N
P-231	85° 40' 5.262" E	23° 48' 29.814" N
P-232	85° 40' 6.363" E	23° 48' 30.154" N
P-233	85° 40' 6.516" E	23° 48' 30.203" N
P-234	85° 40' 6.643" E	23° 48' 30.244" N
P-235	85° 40' 6.813" E	23° 48' 30.298" N

Provisional Cardinal Points for Lalgah (North) Block

POINT NO	Longitude (WGS84)	Latitude (WGS84)
P-236	85° 40' 7.031" E	23° 48' 30.368" N
P-237	85° 40' 7.422" E	23° 48' 30.493" N
P-238	85° 40' 7.870" E	23° 48' 30.661" N
P-239	85° 40' 8.295" E	23° 48' 30.820" N
P-240	85° 40' 8.669" E	23° 48' 30.961" N
P-241	85° 40' 8.778" E	23° 48' 31.002" N
P-242	85° 40' 8.902" E	23° 48' 31.048" N
P-243	85° 40' 8.981" E	23° 48' 31.082" N
P-244	85° 40' 9.434" E	23° 48' 31.300" N
P-245	85° 40' 9.977" E	23° 48' 31.561" N
P-246	85° 40' 10.261" E	23° 48' 31.698" N
P-247	85° 40' 10.488" E	23° 48' 31.807" N
P-248	85° 40' 10.575" E	23° 48' 31.859" N
P-249	85° 40' 11.654" E	23° 48' 32.490" N
P-250	85° 40' 11.989" E	23° 48' 32.690" N
P-251	85° 40' 13.584" E	23° 48' 33.619" N
P-252	85° 40' 13.842" E	23° 48' 33.760" N
P-253	85° 40' 14.283" E	23° 48' 34.003" N
P-254	85° 40' 15.445" E	23° 48' 34.686" N
P-255	85° 40' 15.989" E	23° 48' 34.988" N
P-256	85° 40' 16.873" E	23° 48' 35.466" N
P-257	85° 40' 16.895" E	23° 48' 35.478" N
P-258	85° 40' 16.965" E	23° 48' 35.516" N
P-259	85° 40' 17.136" E	23° 48' 35.603" N
P-260	85° 40' 17.185" E	23° 48' 35.628" N
P-261	85° 40' 17.291" E	23° 48' 35.682" N
P-262	85° 40' 17.338" E	23° 48' 35.706" N
P-263	85° 40' 17.389" E	23° 48' 35.731" N
P-264	85° 40' 17.519" E	23° 48' 35.797" N
P-265	85° 40' 17.545" E	23° 48' 35.810" N
P-266	85° 40' 17.602" E	23° 48' 35.839" N
P-267	85° 40' 17.779" E	23° 48' 35.929" N
P-268	85° 40' 17.837" E	23° 48' 35.958" N
P-269	85° 40' 17.985" E	23° 48' 36.033" N
P-270	85° 40' 18.268" E	23° 48' 36.176" N
P-271	85° 40' 18.335" E	23° 48' 36.210" N
P-272	85° 40' 18.528" E	23° 48' 36.307" N
P-273	85° 40' 18.619" E	23° 48' 36.354" N
P-274	85° 40' 18.787" E	23° 48' 36.437" N
P-275	85° 40' 18.868" E	23° 48' 36.477" N
P-276	85° 40' 19.073" E	23° 48' 36.579" N
P-277	85° 40' 19.103" E	23° 48' 36.593" N
P-278	85° 40' 19.378" E	23° 48' 36.729" N
P-279	85° 40' 19.441" E	23° 48' 36.761" N
P-280	85° 40' 19.619" E	23° 48' 36.849" N
P-281	85° 40' 19.819" E	23° 48' 36.914" N
P-282	85° 40' 19.883" E	23° 48' 36.934" N

Provisional Cardinal Points for Lalgah (North) Block

POINT NO	Longitude (WGS84)	Latitude (WGS84)
P-283	85° 40' 20.012" E	23° 48' 36.976" N
P-284	85° 40' 20.041" E	23° 48' 36.986" N
P-285	85° 40' 20.178" E	23° 48' 37.030" N
P-286	85° 40' 20.331" E	23° 48' 37.080" N
P-287	85° 40' 20.597" E	23° 48' 37.088" N
P-288	85° 40' 20.694" E	23° 48' 37.090" N
P-289	85° 40' 20.812" E	23° 48' 37.095" N
P-290	85° 40' 20.852" E	23° 48' 37.096" N
P-291	85° 40' 20.997" E	23° 48' 37.074" N
P-292	85° 40' 21.055" E	23° 48' 37.065" N
P-293	85° 40' 21.167" E	23° 48' 37.047" N
P-294	85° 40' 21.300" E	23° 48' 37.026" N
P-295	85° 40' 21.547" E	23° 48' 36.926" N
P-296	85° 40' 21.598" E	23° 48' 36.905" N
P-297	85° 40' 21.833" E	23° 48' 36.810" N
P-298	85° 40' 22.009" E	23° 48' 36.730" N
P-299	85° 40' 22.501" E	23° 48' 36.451" N
P-300	85° 40' 23.059" E	23° 48' 36.169" N
P-301	85° 40' 24.443" E	23° 48' 35.308" N
P-302	85° 40' 25.990" E	23° 48' 34.271" N
P-303	85° 40' 27.584" E	23° 48' 33.211" N
P-304	85° 40' 28.980" E	23° 48' 32.242" N
P-305	85° 40' 29.895" E	23° 48' 31.689" N
P-306	85° 40' 31.422" E	23° 48' 30.935" N
P-307	85° 40' 32.763" E	23° 48' 30.421" N
P-308	85° 40' 33.679" E	23° 48' 29.955" N
P-309	85° 40' 34.992" E	23° 48' 29.051" N
P-310	85° 40' 36.305" E	23° 48' 28.212" N
P-311	85° 40' 38.348" E	23° 48' 27.126" N
P-312	85° 40' 40.021" E	23° 48' 26.440" N
P-313	85° 40' 41.122" E	23° 48' 25.989" N
P-314	85° 40' 42.606" E	23° 48' 25.448" N
P-315	85° 40' 43.640" E	23° 48' 25.072" N
P-316	85° 40' 44.895" E	23° 48' 24.629" N
P-317	85° 40' 47.125" E	23° 48' 23.875" N
P-318	85° 40' 49.784" E	23° 48' 23.030" N
P-319	85° 40' 51.265" E	23° 48' 22.565" N
P-320	85° 40' 53.832" E	23° 48' 21.843" N
P-321	85° 40' 55.954" E	23° 48' 21.386" N
P-322	85° 40' 57.958" E	23° 48' 20.996" N
P-323	85° 40' 59.634" E	23° 48' 20.826" N
P-324	85° 41' 0.713" E	23° 48' 20.641" N
P-325	85° 41' 1.090" E	23° 48' 20.561" N
P-326	85° 41' 1.603" E	23° 48' 20.413" N
P-327	85° 41' 2.089" E	23° 48' 20.265" N
P-328	85° 41' 2.472" E	23° 48' 20.130" N
P-329	85° 41' 3.068" E	23° 48' 19.902" N

Provisional Cardinal Points for Lalgah (North) Block

POINT NO	Longitude (WGS84)	Latitude (WGS84)
P-330	85° 41' 3.434" E	23° 48' 19.766" N
P-331	85° 41' 3.544" E	23° 48' 19.725" N
P-332	85° 41' 3.864" E	23° 48' 19.566" N
P-333	85° 41' 4.732" E	23° 48' 19.136" N
P-334	85° 41' 5.254" E	23° 48' 18.877" N
P-335	85° 41' 5.749" E	23° 48' 18.618" N
P-336	85° 41' 6.105" E	23° 48' 18.427" N
P-337	85° 41' 6.400" E	23° 48' 18.268" N
P-338	85° 41' 6.779" E	23° 48' 18.064" N
P-339	85° 41' 4.625" E	23° 48' 18.511" N
P-340	85° 41' 2.963" E	23° 48' 18.819" N
P-341	85° 41' 1.981" E	23° 48' 18.854" N
P-342	85° 41' 0.204" E	23° 48' 18.882" N
P-343	85° 40' 58.547" E	23° 48' 18.652" N
P-344	85° 40' 56.891" E	23° 48' 18.294" N
P-345	85° 40' 55.376" E	23° 48' 17.894" N
P-346	85° 40' 53.956" E	23° 48' 17.323" N
P-347	85° 40' 52.654" E	23° 48' 16.645" N
P-348	85° 40' 51.656" E	23° 48' 15.927" N
P-349	85° 40' 50.753" E	23° 48' 15.102" N
P-350	85° 40' 49.551" E	23° 48' 13.780" N
P-351	85° 40' 49.022" E	23° 48' 12.958" N
P-352	85° 40' 48.517" E	23° 48' 11.986" N
P-353	85° 40' 47.967" E	23° 48' 10.971" N
P-354	85° 40' 47.485" E	23° 48' 10.042" N
P-355	85° 40' 46.912" E	23° 48' 8.940" N
P-356	85° 40' 46.409" E	23° 48' 7.796" N
P-357	85° 40' 45.720" E	23° 48' 6.607" N
P-358	85° 40' 44.541" E	23° 48' 5.372" N
P-359	85° 40' 43.008" E	23° 48' 4.412" N
P-360	85° 40' 41.684" E	23° 48' 3.605" N
P-361	85° 40' 40.547" E	23° 48' 2.800" N
P-362	85° 40' 39.528" E	23° 48' 1.866" N
P-363	85° 40' 38.323" E	23° 48' 0.802" N
P-364	85° 40' 37.093" E	23° 47' 59.932" N
P-365	85° 40' 36.200" E	23° 47' 59.387" N
P-366	85° 40' 35.257" E	23° 47' 58.991" N
P-367	85° 40' 33.809" E	23° 47' 58.747" N
P-368	85° 40' 31.775" E	23° 47' 58.807" N
P-369	85° 40' 29.949" E	23° 47' 59.089" N
P-370	85° 40' 27.939" E	23° 47' 59.523" N
P-371	85° 40' 25.718" E	23° 48' 0.084" N
P-372	85° 40' 23.846" E	23° 48' 0.765" N
P-373	85° 40' 22.820" E	23° 48' 1.027" N
P-374	85° 40' 21.133" E	23° 48' 1.374" N
P-375	85° 40' 19.882" E	23° 48' 1.712" N
P-376	85° 40' 18.812" E	23° 48' 2.006" N

Provisional Cardinal Points for Lalgah (North) Block

POINT NO	Longitude (WGS84)	Latitude (WGS84)
P-377	85° 40' 16.717" E	23° 48' 2.674" N
P-378	85° 40' 15.029" E	23° 48' 3.154" N
P-379	85° 40' 13.718" E	23° 48' 3.443" N
P-380	85° 40' 12.035" E	23° 48' 3.429" N
P-381	85° 40' 10.450" E	23° 48' 2.985" N
P-382	85° 40' 8.660" E	23° 48' 2.023" N
P-383	85° 40' 7.405" E	23° 48' 1.368" N
P-384	85° 40' 6.221" E	23° 48' 0.626" N
P-385	85° 40' 5.457" E	23° 48' 0.113" N
P-386	85° 40' 3.983" E	23° 48' 0.064" N
P-387	85° 40' 0.157" E	23° 47' 59.796" N
P-388	85° 39' 54.293" E	23° 48' 0.042" N
P-389	85° 39' 46.209" E	23° 47' 59.787" N
P-390	85° 39' 41.088" E	23° 48' 0.288" N
P-391	85° 39' 36.908" E	23° 48' 1.225" N
P-392	85° 39' 32.464" E	23° 48' 2.473" N
P-393	85° 39' 29.524" E	23° 48' 3.274" N
P-394	85° 39' 23.902" E	23° 48' 5.017" N
P-395	85° 39' 17.846" E	23° 48' 6.680" N
P-396	85° 39' 15.082" E	23° 48' 7.302" N
P-397	85° 39' 8.320" E	23° 48' 8.856" N
P-398	85° 39' 4.537" E	23° 48' 9.835" N
P-399	85° 39' 0.543" E	23° 48' 10.948" N
P-400	85° 38' 54.076" E	23° 48' 12.424" N
P-401	85° 38' 50.289" E	23° 48' 13.057" N
P-402	85° 38' 45.423" E	23° 48' 13.429" N
P-403	85° 38' 43.571" E	23° 48' 13.605" N
P-404	85° 38' 39.888" E	23° 48' 13.890" N
P-405	85° 38' 36.930" E	23° 48' 14.044" N
P-406	85° 38' 33.142" E	23° 48' 14.652" N
P-407	85° 38' 29.329" E	23° 48' 15.334" N
P-408	85° 38' 23.132" E	23° 48' 16.690" N
P-409	85° 38' 19.243" E	23° 48' 17.695" N
P-410	85° 38' 15.107" E	23° 48' 18.380" N
P-411	85° 38' 12.795" E	23° 48' 18.577" N
P-412	85° 38' 7.458" E	23° 48' 19.630" N
P-413	85° 38' 6.560" E	23° 48' 19.710" N
P-414	85° 38' 1.941" E	23° 48' 20.045" N
P-415	85° 38' 0.256" E	23° 48' 20.245" N
P-416	85° 38' 0.221" E	23° 48' 20.566" N
P-417	85° 38' 0.289" E	23° 48' 21.961" N
P-418	85° 38' 0.313" E	23° 48' 22.466" N
P-419	85° 38' 0.334" E	23° 48' 22.891" N
P-420	85° 38' 0.346" E	23° 48' 23.136" N
P-421	85° 38' 0.338" E	23° 48' 23.326" N
P-422	85° 38' 0.320" E	23° 48' 23.747" N
P-423	85° 38' 0.299" E	23° 48' 24.191" N

Provisional Cardinal Points for Lalgah (North) Block

POINT NO	Longitude (WGS84)	Latitude (WGS84)
P-424	85° 38' 0.270" E	23° 48' 24.560" N
P-425	85° 38' 0.216" E	23° 48' 25.246" N
P-426	85° 38' 0.171" E	23° 48' 25.393" N