

**KOILAJAN BLOCK SUMMARY  
PART A**

Sr. No.	Features	Details
<b>1.</b>	<b>Location</b>	
	Coal Block	<b>Koilajan</b>
	Latitude	25° 59' 56" N - 26° 1' 2" N (Provisional)
	Longitude	93° 33' 1" E - 93° 34' 4" E (Provisional)
	Topo Sheet No.	83F/12 and G/9
	Coalfield	Koilajan
	Villages	-
	Tehsil/Taluka	-
	District	Karbi Anglong (United Mikir Hills and North Cachar Hills Districts)
	State	Assam
<b>2.</b>	<b>Connectivity with Block</b>	
	Nearest Rail Head	Block is situated north-west of the Dimapur Road Railway Station of NEF Railways, and is reached from this station by a graveled road 29 km. long.
	Road	-
	Airport	-
<b>3.</b>	<b>Area</b>	
	Geological Block Area	1.77 sq km (As supplied by DGM, Assam)
	Green Cover	
	Area excluding green cover	
<b>4.</b>	<b>Climate and Topography</b>	
	Average Annual Rainfall	-
	Temperature (Min. — Max.)	-
	Local Surface Drainage Channels	-
	Rivers	-
<b>5.</b>	<b>Exploration</b>	
	Status	Explored
	Exploration Agency	DGM, Assam
	Total Number of Boreholes with meterage	7 Boreholes; 599.63 m

	Borehole Density	3.95 Boreholes per Sq.Km.			
	General Dip of Seams	The sedimentary in the coalfield area generally show a south-easterly dip which varies from 8 to 12 degrees.			
	General Strike Direction	NE-SW			
	Faults	-			
<b>6.</b>	<b>Coal Seams &amp; Reserve</b>				
	<b>Coal Seams</b>	<b>Thickness Range (m)</b>	<b>Depth Range (m)</b>	<b>Resources (Lakh Tonne)</b>	<b>Grade</b>
	Coal Seam	1.30-2.50		0.584	G5-Ungraded
	<b>Total</b>			<b>0.584</b>	<b>G5</b>
<b>7.</b>	<b>Surface Constraints</b>	NA			
<b>8.</b>	<b>Grade of coal</b>	G5 (Provisional) Based on the quality of coal given in the geological note/report.			
<b>9.</b>	<b>Decision Support System (DSS) Analysis</b>	Information not available.			
<b>10.</b>	<b>Eco Sensitive Zone (ESZ)</b>	Information not available.			

#### PART B

Sr. No.	Features	Details
1	Tentative Peak rated Capacity	0.004 Mty

**Note:**

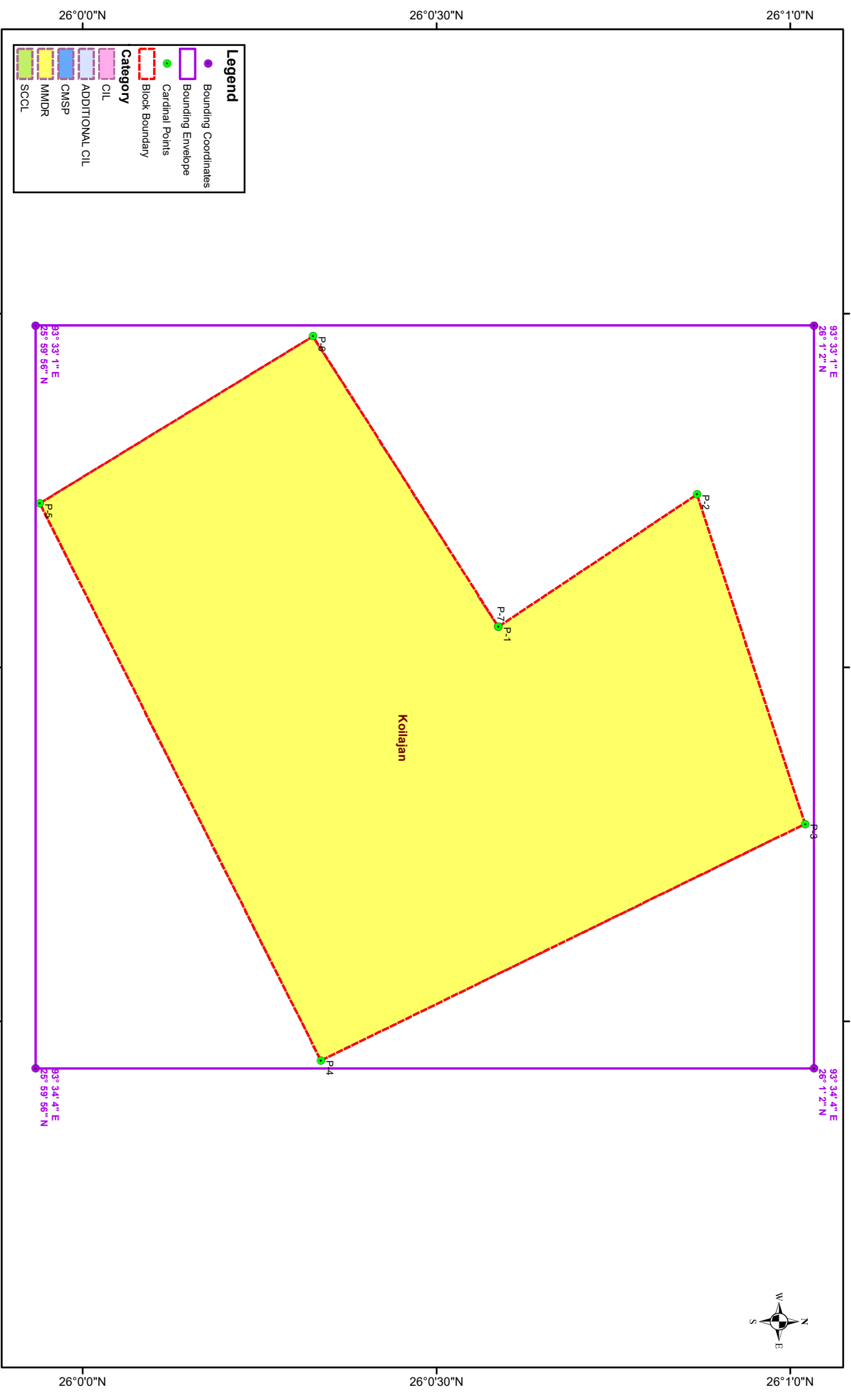
1. The summary has been compiled from "Report on Drilling for Coal at Koilajan, Karbi Anglong, Assam." Prepared by DGM-Assam.
2. The block boundary map is prepared based on the data provided by DGM, Assam. DGPS survey is required to ascertain the block boundary.
3. A small colliery has been running at this place since 1949.

**Disclaimer:**

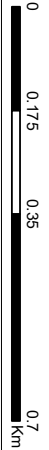
1. The analysis is done on Beta-version (Trial Version) of Decision Support System (DSS) of FSI / MOEF.
2. The Decision Rules for various parameters of this DSS System are controlled by FSI.
3. CMPDI only runs this DSS to obtain the status of any block based on these Decision Rules.
4. The database of the Decision Rules is updated by FSI from time to time.
5. CMPDI does not own any responsibility for variation in the results which are based on the Decision Rules of the FSI DSS in case of any updation of the database at FSI end.
6. ESZ analysis and tiger habitat/ corridor given here is based on the information available in public domain. Bidders are encouraged to verify this information and any other information additionally available.

**Koijajan Block, North Eastern Region**

**FOR INTERNAL/RESTRICTED USE ONLY**



Note: Data is in WGS84 coordinate system.



**Provisional Cardinal Points for Koilajan Block**

POINT NO	Longitude (WGS84)	Latitude (WGS84)
P-1	93° 33' 26.550" E	26° 0' 35.250" N
P-2	93° 33' 15.340" E	26° 0' 52.090" N
P-3	93° 33' 43.270" E	26° 1' 1.250" N
P-4	93° 34' 3.330" E	26° 0' 20.210" N
P-5	93° 33' 16.090" E	25° 59' 56.370" N
P-6	93° 33' 1.920" E	26° 0' 19.540" N

Note: The provisional cardinal points are in WGS84 coordinate system. These points are extracted through ArcGIS software after georeferencing of block boundary and onground DGPS survey is required to ascertain the exact location of the points.