

**KAPASDANGA - BHARKATA BLOCK SUMMARY**  
**PART A**

Sr. No.	Features	Details
<b>1.</b>	<b>Location</b>	
	Coal Block	<b>Kapasdanga-Bharkata</b>
	Latitude	24° 2' 46" N-24° 5' 7" N (Provisional)
	Longitude	87° 35' 34" E-87° 38' 13" E (Provisional)
	Topo Sheet No.	Old- 72P/12 (R.F. 1:50000), New- G45V12
	Coalfield	Birbhum
	Villages	Dhanuphari, Pachami, Girijor, Nutanpara, Chanda, Alinagar, Kapasdanga, Haridaspur, Bharkata, Lopahari and Sagarbandh.
	Tehsil/Taluka	Mohammad Bazar
	District	Birbhum
	State	West Bengal
<b>2.</b>	<b>Connectivity with Block</b>	
	Nearest Rail Head	Mallarpur
	Road	The sector is located north of Panagarh-Moregram expressway (NH-60) that connects National Highway NH-2 and NH-34 and can be approached either from Mallarpur or Suri. The interior parts of the sector are well connected by unmetalled roads.
	Airport	Kazi Nazrul Islam Airport (Andal Airport)
<b>3.</b>	<b>Area</b>	
	Geological Block Area	12.02 Sq. Km. (As per shape file. Refer Note below)
	Green Cover	1.21 Sq. Km. (As per FSI Map)
	Area excluding green cover	10.814 Sq. Km. (As per FSI Map)
<b>4.</b>	<b>Climate and Topography</b>	
	Average Annual Rainfall	1430mm
	Temperature (Min. — Max.)	12.7°C -28.3°C(Winter) 25.5°C - 41.5°C(Summer)
	Local Surface Drainage Channels	The terrain is flat to low upland of rolling topography having general altitude between 60m and 80m above M.S.L. and is ornamented with red lateritic cappings (duricrust) and scanty black rocky exposures of basalt in the northwestern half and yellowish-white to white sandy clay-stone exposures (Khari khadan) of Tertiary Formation in the southeastern half. The overall slope of the area is towards south. Small streamlets fed by rainwater have formed a dendritic drainage pattern in the area.

	Rivers	Dwarka Nadi			
<b>5.</b>	<b>Exploration</b>				
	Status	Regionally Explored			
	Exploration Agency	GSI			
	Total Number of Boreholes with meterage	6 boreholes with 4174.30 m			
	Borehole Density	Approx. 0.5 BHS/sq.km.			
	General Dip of Seams	5° westerly			
	General Strike Direction	NNW-SSE			
	Faults	No major fault has been identified with in the area.			
<b>6.</b>	<b>Coal Seams &amp; Reserve (As per GSI)</b>				
	Coal Seams	Thickness Range (m)	Depth Range (m)	Resources (mt)	Grade
	<b>Seam Zone-IV</b>	22.95-44.45	304.40-400.25	171.69	C-G
	<b>Seam Zone-III</b>	42.50-45.70	416.60-467.00	115.21	A-G
	<b>Seam Zone-II</b>	30.75-61.25	482.30-549.95	186.36	B-F
	<b>Seam Zone-II+III</b>	111.02-111.68	420.18-575.50	167.33	A-F
	<b>Seam Zone-I</b>	37.52-56.63	600.10-717.40	234.63	A-F
	<b>LI</b>	1.30-1.80		12.01	F
	<b>LIII</b>	1.20-2.75		34.79	
	<b>Total</b>			<b>922.02</b>	
<b>7.</b>	<b>Surface Constraints</b>	-			
<b>8.</b>	<b>Grade of coal</b>	G8 (Provisional) based on weighted average grade as per grade-wise data available in Regional GR.			
<b>9.</b>	<b>Decision Support System (DSS) Analysis</b>	-			
<b>10.</b>	<b>Eco Sensitive Zone (ESZ)</b>	Approx. 97 km from the boundary of ESZ of Udawa lake.			

**Note:**

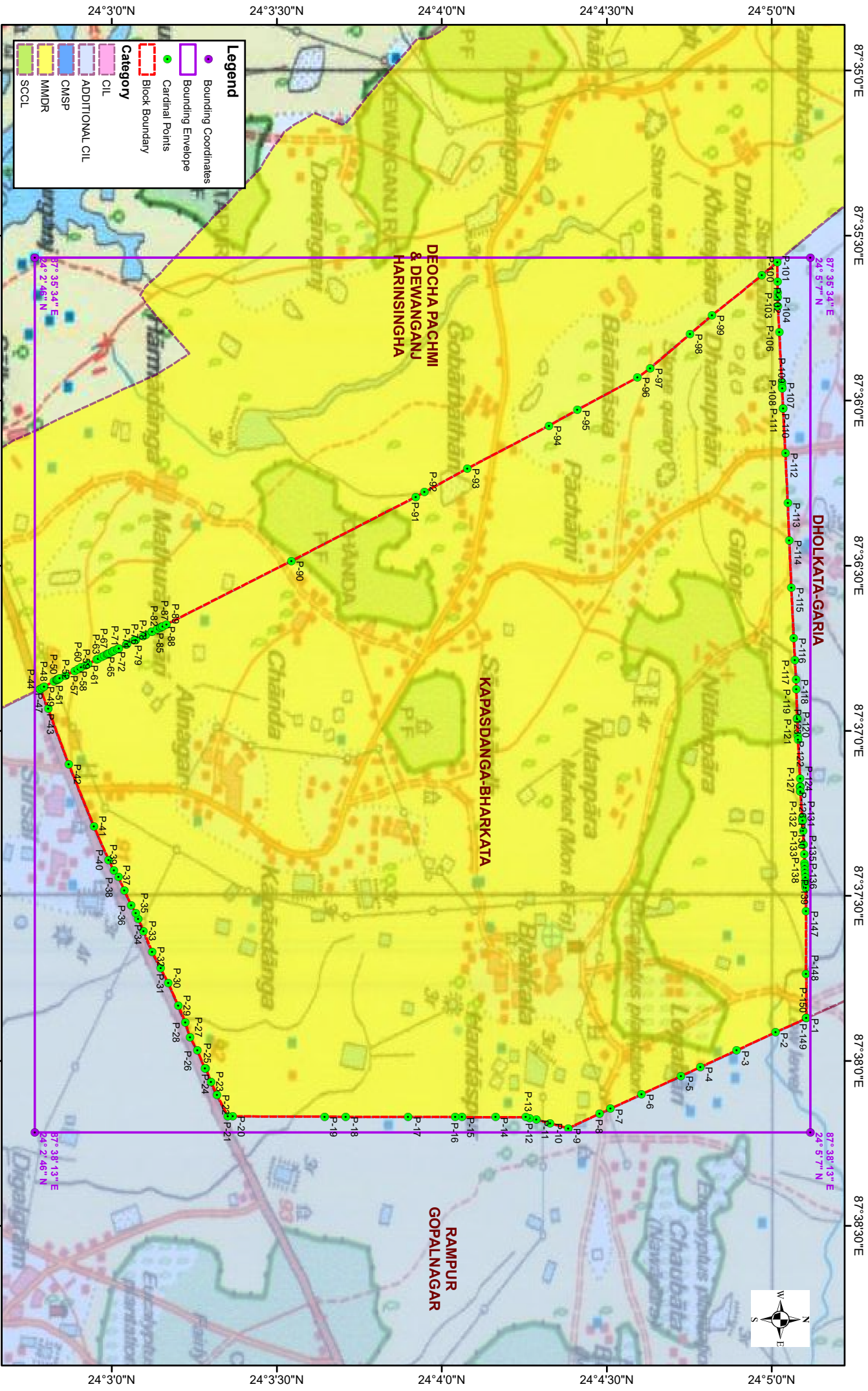
1. The summary has been compiled from “Final Report on Regional Exploration for Coal in Kapasdanga-Bharkata Sector of Birbhum Coalfield, Rajmahal Group of Coalfields, Birbhum District, West Bengal”.
2. The block boundary is provisional and the cardinal points, bounding co-ordinates are approximate. Field DGPS survey is required to ascertain the exact area.

**Disclaimer:**

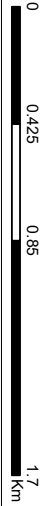
1. The analysis is done on Beta-version (Trial Version) of Decision Support System (DSS) of FSI / MOEF.
2. The Decision Rules for various parameters of this DSS System are controlled by FSI.
3. CMPDI only runs this DSS to obtain the status of any block based on these Decision Rules.
4. The database of the Decision Rules is updated by FSI from time to time.
5. CMPDI does not own any responsibility for variation in the results which are based on the Decision Rules of the FSI DSS in case of any updation of the database at FSI end.
6. ESZ analysis and tiger habitat/ corridor given here is based on the information available in public domain. Bidders are encouraged to verify this information and any other information additionally available.

**Kapasdanga Bharkata Block, Birhum Coalfield**

FOR INTERNAL/RESTRICTED USE ONLY



Note: Data is in WGS84 coordinate system.



**Provisional Cardinal Points for KAPASDANGA-BHARKATA Block**

POINT NO	Longitude (WGS84)	Latitude (WGS84)
P-1	87° 37' 52.270" E	24° 5' 6.264" N
P-2	87° 37' 54.828" E	24° 5' 0.645" N
P-3	87° 37' 58.085" E	24° 4' 53.598" N
P-4	87° 38' 1.135" E	24° 4' 47.001" N
P-5	87° 38' 2.760" E	24° 4' 43.485" N
P-6	87° 38' 6.081" E	24° 4' 36.301" N
P-7	87° 38' 8.688" E	24° 4' 30.661" N
P-8	87° 38' 9.599" E	24° 4' 28.689" N
P-9	87° 38' 12.248" E	24° 4' 22.958" N
P-10	87° 38' 11.316" E	24° 4' 19.656" N
P-11	87° 38' 10.690" E	24° 4' 17.184" N
P-12	87° 38' 10.404" E	24° 4' 15.959" N
P-13	87° 38' 10.242" E	24° 4' 15.254" N
P-14	87° 38' 10.228" E	24° 4' 9.779" N
P-15	87° 38' 10.214" E	24° 4' 3.663" N
P-16	87° 38' 10.212" E	24° 4' 2.424" N
P-17	87° 38' 10.199" E	24° 3' 53.890" N
P-18	87° 38' 10.165" E	24° 3' 42.534" N
P-19	87° 38' 10.149" E	24° 3' 38.715" N
P-20	87° 38' 10.089" E	24° 3' 21.994" N
P-21	87° 38' 10.076" E	24° 3' 21.063" N
P-22	87° 38' 6.134" E	24° 3' 19.129" N
P-23	87° 38' 3.812" E	24° 3' 18.027" N
P-24	87° 38' 1.415" E	24° 3' 17.090" N
P-25	87° 38' 1.411" E	24° 3' 16.947" N
P-26	87° 37' 58.114" E	24° 3' 15.537" N
P-27	87° 37' 55.686" E	24° 3' 14.193" N
P-28	87° 37' 52.997" E	24° 3' 13.383" N
P-29	87° 37' 49.937" E	24° 3' 12.090" N
P-30	87° 37' 45.875" E	24° 3' 10.270" N
P-31	87° 37' 43.183" E	24° 3' 8.879" N
P-32	87° 37' 40.175" E	24° 3' 7.344" N
P-33	87° 37' 36.377" E	24° 3' 5.764" N
P-34	87° 37' 34.266" E	24° 3' 4.806" N
P-35	87° 37' 33.211" E	24° 3' 4.375" N
P-36	87° 37' 31.680" E	24° 3' 3.511" N
P-37	87° 37' 29.042" E	24° 3' 2.265" N
P-38	87° 37' 26.616" E	24° 3' 1.211" N
P-39	87° 37' 25.348" E	24° 3' 0.346" N
P-40	87° 37' 23.501" E	24° 2' 59.435" N
P-41	87° 37' 17.381" E	24° 2' 56.753" N
P-42	87° 37' 6.041" E	24° 2' 52.158" N
P-43	87° 36' 55.969" E	24° 2' 48.428" N
P-44	87° 36' 52.480" E	24° 2' 47.005" N
P-45	87° 36' 52.409" E	24° 2' 46.956" N
P-46	87° 36' 52.396" E	24° 2' 46.949" N
P-47	87° 36' 52.192" E	24° 2' 47.341" N

**Provisional Cardinal Points for KAPASDANGA-BHARKATA Block**

P-48	87° 36' 51.995" E	24° 2' 47.703" N
P-49	87° 36' 51.032" E	24° 2' 49.476" N
P-50	87° 36' 50.750" E	24° 2' 49.993" N
P-51	87° 36' 50.736" E	24° 2' 50.018" N
P-52	87° 36' 50.736" E	24° 2' 50.020" N
P-53	87° 36' 50.688" E	24° 2' 50.108" N
P-54	87° 36' 50.640" E	24° 2' 50.199" N
P-55	87° 36' 50.573" E	24° 2' 50.332" N
P-56	87° 36' 50.466" E	24° 2' 50.541" N
P-57	87° 36' 49.943" E	24° 2' 51.571" N
P-58	87° 36' 49.106" E	24° 2' 53.217" N
P-59	87° 36' 48.806" E	24° 2' 53.809" N
P-60	87° 36' 48.492" E	24° 2' 54.427" N
P-61	87° 36' 48.070" E	24° 2' 55.257" N
P-62	87° 36' 47.852" E	24° 2' 55.685" N
P-63	87° 36' 47.079" E	24° 2' 57.206" N
P-64	87° 36' 46.943" E	24° 2' 57.474" N
P-65	87° 36' 46.567" E	24° 2' 58.213" N
P-66	87° 36' 46.332" E	24° 2' 58.670" N
P-67	87° 36' 46.080" E	24° 2' 59.172" N
P-68	87° 36' 46.017" E	24° 2' 59.296" N
P-69	87° 36' 45.977" E	24° 2' 59.375" N
P-70	87° 36' 45.853" E	24° 2' 59.619" N
P-71	87° 36' 45.599" E	24° 3' 0.118" N
P-72	87° 36' 45.561" E	24° 3' 0.193" N
P-73	87° 36' 45.422" E	24° 3' 0.467" N
P-74	87° 36' 45.134" E	24° 3' 1.033" N
P-75	87° 36' 45.022" E	24° 3' 1.255" N
P-76	87° 36' 44.343" E	24° 3' 2.600" N
P-77	87° 36' 44.256" E	24° 3' 2.774" N
P-78	87° 36' 43.589" E	24° 3' 4.110" N
P-79	87° 36' 43.456" E	24° 3' 4.377" N
P-80	87° 36' 42.812" E	24° 3' 5.667" N
P-81	87° 36' 42.564" E	24° 3' 6.164" N
P-82	87° 36' 42.016" E	24° 3' 7.260" N
P-83	87° 36' 41.966" E	24° 3' 7.361" N
P-84	87° 36' 41.535" E	24° 3' 8.224" N
P-85	87° 36' 41.237" E	24° 3' 8.820" N
P-86	87° 36' 41.180" E	24° 3' 8.934" N
P-87	87° 36' 41.060" E	24° 3' 9.175" N
P-88	87° 36' 41.013" E	24° 3' 9.270" N
P-89	87° 36' 40.631" E	24° 3' 9.976" N
P-90	87° 36' 29.136" E	24° 3' 32.636" N
P-91	87° 36' 17.486" E	24° 3' 55.250" N
P-92	87° 36' 16.630" E	24° 3' 56.855" N
P-93	87° 36' 12.360" E	24° 4' 4.610" N
P-94	87° 36' 4.576" E	24° 4' 19.446" N
P-95	87° 36' 1.681" E	24° 4' 24.610" N

**Provisional Cardinal Points for KAPASDANGA-BHARKATA Block**

P-96	87° 35' 55.797" E	24° 4' 35.561" N
P-97	87° 35' 54.153" E	24° 4' 37.891" N
P-98	87° 35' 47.924" E	24° 4' 45.115" N
P-99	87° 35' 44.506" E	24° 4' 49.124" N
P-100	87° 35' 37.279" E	24° 4' 58.164" N
P-101	87° 35' 34.821" E	24° 5' 0.985" N
P-102	87° 35' 38.454" E	24° 5' 1.036" N
P-103	87° 35' 40.364" E	24° 5' 1.058" N
P-104	87° 35' 41.212" E	24° 5' 1.067" N
P-105	87° 35' 42.805" E	24° 5' 1.071" N
P-106	87° 35' 47.539" E	24° 5' 1.374" N
P-107	87° 35' 56.677" E	24° 5' 1.817" N
P-108	87° 35' 57.405" E	24° 5' 1.852" N
P-109	87° 35' 57.786" E	24° 5' 1.871" N
P-110	87° 36' 1.360" E	24° 5' 2.050" N
P-111	87° 36' 1.435" E	24° 5' 2.054" N
P-112	87° 36' 9.492" E	24° 5' 2.457" N
P-113	87° 36' 18.558" E	24° 5' 2.884" N
P-114	87° 36' 25.368" E	24° 5' 3.170" N
P-115	87° 36' 33.934" E	24° 5' 3.530" N
P-116	87° 36' 43.177" E	24° 5' 3.982" N
P-117	87° 36' 47.145" E	24° 5' 4.196" N
P-118	87° 36' 50.673" E	24° 5' 4.387" N
P-119	87° 36' 52.437" E	24° 5' 4.441" N
P-120	87° 36' 57.716" E	24° 5' 4.602" N
P-121	87° 36' 57.820" E	24° 5' 4.606" N
P-122	87° 37' 0.893" E	24° 5' 4.700" N
P-123	87° 37' 1.673" E	24° 5' 4.743" N
P-124	87° 37' 8.685" E	24° 5' 5.130" N
P-125	87° 37' 10.165" E	24° 5' 5.175" N
P-126	87° 37' 10.170" E	24° 5' 5.165" N
P-127	87° 37' 10.176" E	24° 5' 5.152" N
P-128	87° 37' 10.976" E	24° 5' 5.178" N
P-129	87° 37' 10.997" E	24° 5' 5.179" N
P-130	87° 37' 15.843" E	24° 5' 5.512" N
P-131	87° 37' 16.302" E	24° 5' 5.543" N
P-132	87° 37' 16.317" E	24° 5' 5.544" N
P-133	87° 37' 18.194" E	24° 5' 5.655" N
P-134	87° 37' 20.666" E	24° 5' 5.767" N
P-135	87° 37' 22.498" E	24° 5' 5.861" N
P-136	87° 37' 24.018" E	24° 5' 5.939" N
P-137	87° 37' 24.564" E	24° 5' 5.967" N
P-138	87° 37' 25.325" E	24° 5' 6.006" N
P-139	87° 37' 25.997" E	24° 5' 6.044" N
P-140	87° 37' 26.719" E	24° 5' 6.078" N
P-141	87° 37' 27.498" E	24° 5' 6.118" N
P-142	87° 37' 27.843" E	24° 5' 6.136" N
P-143	87° 37' 28.045" E	24° 5' 6.146" N

**Provisional Cardinal Points for KAPASDANGA-BHARKATA Block**

P-144	87° 37' 28.198" E	24° 5' 6.154" N
P-145	87° 37' 28.236" E	24° 5' 6.164" N
P-146	87° 37' 28.537" E	24° 5' 6.171" N
P-147	87° 37' 32.762" E	24° 5' 6.186" N
P-148	87° 37' 44.231" E	24° 5' 6.231" N
P-149	87° 37' 52.270" E	24° 5' 6.265" N

Note: The provisional cardinal points are in WGS84 coordinate system. These points are extracted through ArcGIS software after georeferencing of block boundary and onground DGPS survey is required to ascertain the exact location of the points.