

**KALYAN KHANI- BLOCK 6 BLOCK SUMMARY
PART A**

Sr. No.	Features	Details
1.	Location	
	Coal Block	KALYAN KHANI- BLOCK 6
	Latitude	18° 57' 52" N-18° 59' 21" N (Provisional)
	Longitude	79° 30' 21" E-79° 31' 46" E (Provisional)
	Topo Sheet No.	E44H9 (56N / 9)
	Coalfield	GODAVARI VALLEY COAL FIELD
	Villages	NIL
	Tehsil/Taluka	MANCHIRYAL
	District	MANCHIRYAL
	State	TELANGANA
2.	Connectivity with Block	
	Nearest Rail Head	7 km from Mandamarri Rly. Stn. on Balharsha-Kazipet section of South Central Railway.
	Road	3 km from Mandamarri township and is connected by State Highway road leading to Mancherial.
	Airport	Hyderabad
3.	Area	
	Geological Block Area	3.71 Sq.Km
	Forest Area	Out of 371 Ha of Block area ,104 Ha is Covered by Indaram reserve forest.
	Non-Forest Area	267Ha
4.	Climate and Topography	
	Average Annual Rainfall	The mean annual rainfall is 925.90 mm.
	Temperature (Min. — Max.)	15° - 46°C
	Local Surface Drainage Channels	The block area is located in Palavagu catchment area, Palavagu flowing across the mine take area from northeast to west in the block.
	Rivers	No

5.	Exploration				
	Status	Detailed exploration is completed in the year 2016			
	Exploration Agency	Promotional Exploration by MECL Detailed Exploration S.C.Co.Ltd			
	Total Number of Boreholes with meterage	boreholes &m 49 BH /22468.49m			
	Borehole Density	Approx.boreholes per sq km : 13.21			
	General Dip of Seams	NE			
	General Strike Direction	NNW-SSE			
	Faults	A total of 7 faults have been deciphered from subsurface data.			
6.	Coal Seams & Reserve				
	Coal Seams	Thickness Range (m)	Depth Range (m)	Resources (mt)	Grade
	1B	0.70 -1.84	71 – 483.60	6.3336	G7&G8
	1A	3.14 – 6.28	92.00 – 503.86	23.6805	G9,G10&G11
	1	0.24 – 3.24	116.00 – 526.23	12.1197	G8 & G9
	IB1	0.16 – 1.35	137.12 – 531.45	4.5696	G8 & G9
	2	0.05 – 2.04	181.67 – 564.42	4.097	G8,G9&G10
	3	0.62 – 2.70	192.20 – 579.83	7.928	G7&G8
	IB3	0.17 – 1.00	288.65 – 595.46	2.4515	G3,G4&G5
	4TOP	0.29 – 2.46	204.10 – 604.98	4.8952	G5-G11
	4 BOT	0.41 – 1.71	206.63 – 607.33	5.7962	G7-G9
	Total			71.8713	
7.	Surface Constraints	Around 24% of the block covered by Indaram reserved forest. South central railway track passing near to the block.			
8.	Grade of coal	G10 (Provisional) based on weighted average grade as per grade-wise data available in Mining plan			
9.	Decision Support System (DSS) Analysis				
10.	Eco Sensitive Zone (ESZ)	NIL			

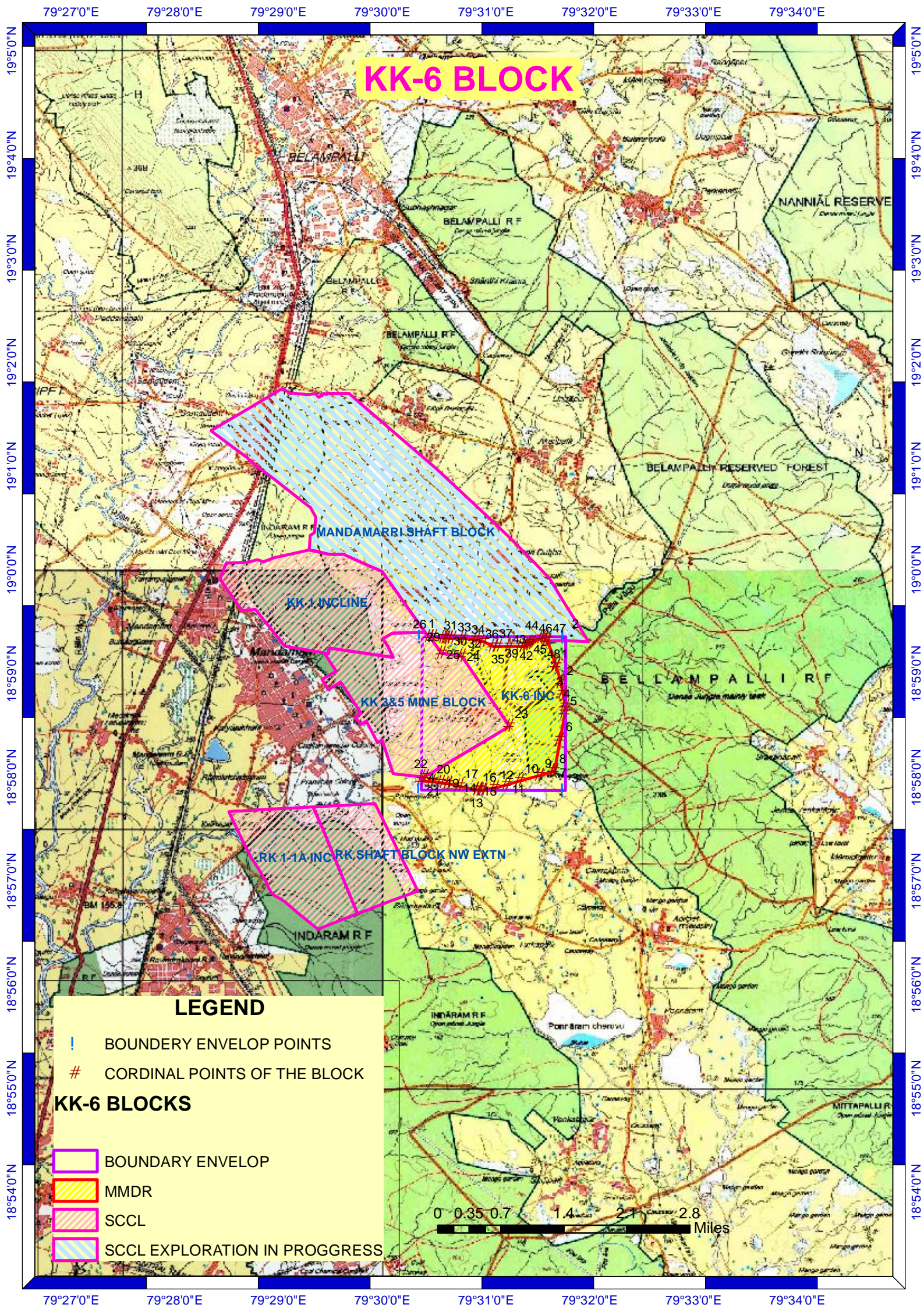
Note:

1. The summary has been compiled from “**GEOLOGICAL REPORT ON MANDAMMARI SHAFT BLOCK, GVCF, MANCHIRYAL DIST. TELANGANA.**”

2. The block boundary is provisional and the cardinal points, bounding co-ordinates are approximate. Field DGPS survey is required to ascertain the exact area.
3. The above information has been provided from M/s SCCL

Disclaimer:

1. The analysis is done on Beta-version (Trial Version) of Decision Support System (DSS) of FSI / MOEF.
2. The Decision Rules for various parameters of this DSS System are controlled by FSI.
3. CMPDI only runs this DSS to obtain the status of any block based on these Decision Rules.
4. The database of the Decision Rules is updated by FSI from time to time.
5. CMPDI does not own any responsibility for variation in the results which are based on the Decision Rules of the FSI DSS in case of any updation of the database at FSI end.
6. ESZ analysis and tiger habitat/ corridor given here is based on the information available in public domain. Bidders are encouraged to verify this information and any other information additionally available.



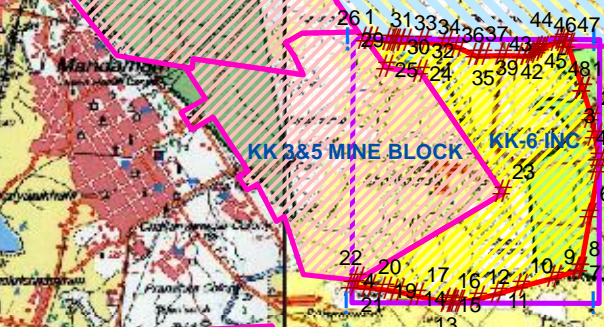
KK-6 BLOCK

LEGEND

- ! BOUNDARY ENVELOPE POINTS
- # CORDINAL POINTS OF THE BLOCK

KK-6 BLOCKS

- BOUNDARY ENVELOP
- MMDR
- SCCL
- SCCL EXPLORATION IN PROGRESS



RK 1-1A INC RK SHAFT BLOCK NW EXTN

MANDAMARRI SHAFT BLOCK

KK-1 INCLINE

KK 3&5 MINE BLOCK

KK-6 INC

INDARAM R F

BELLAMPALLI R F

BELAMPALLI

BELAMPALLI R F

NANNIAL RESERVE

BELAMPALLI RESERVED FOREST

IFF

BMI 156.9

Ponnaram chervu

MITTAPALLI R F

Provisional Cardinal Points for Kalyankhani Block-6

POINT NO	Latitude	Longitude
1	18°59' 4.333296"N	79°31' 40.245076"E
2	18°59' 18.917767"N	79°31' 35.500109"E
3	18°59' 18.91917"N	79°31' 34.841625"E
4	18°59' 21.232249"N	79°31' 33.60023"E
5	18°59' 20.532747"N	79°31' 32.151412"E
6	18°59' 18.042282"N	79°31' 26.46105"E
7	18°59' 17.654165"N	79°31' 25.56948"E
8	18°59' 17.149574"N	79°31' 25.227365"E
9	18°59' 16.315447"N	79°31' 23.705052"E
10	18°59' 15.567844"N	79°31' 22.013422"E
11	18°59' 15.629159"N	79°31' 19.805926"E
12	18°59' 15.799323"N	79°31' 13.442762"E
13	18°59' 15.572817"N	79°31' 6.666524"E
14	18°59' 15.642769"N	79°31' 4.336279"E
15	18°59' 18.318158"N	79°30' 58.555166"E
16	18°59' 19.579752"N	79°30' 54.219012"E
17	18°59' 20.373524"N	79°30' 46.417655"E
18	18°59' 20.326596"N	79°30' 40.370062"E
19	18°59' 20.38939"N	79°30' 38.216086"E
20	18°59' 20.584844"N	79°30' 36.75428"E
21	18°59' 20.806416"N	79°30' 35.57827"E
22	18°59' 21.184288"N	79°30' 29.221044"E
23	18°59' 21.206843"N	79°30' 27.318054"E
24	18°59' 11.676379"N	79°30' 34.101962"E
25	18°59' 10.028186"N	79°30' 45.709846"E
26	18°58' 29.466888"N	79°31' 13.422276"E
27	18°58' 0.40733"N	79°30' 24.380133"E
28	18°57' 57.924758"N	79°30' 22.607695"E
29	18°57' 57.456112"N	79°30' 28.40691"E
30	18°57' 56.941572"N	79°30' 33.671287"E
31	18°57' 56.172396"N	79°30' 37.97855"E
32	18°57' 54.770094"N	79°30' 44.558334"E
33	18°57' 52.60143"N	79°30' 55.120373"E
34	18°57' 52.889234"N	79°30' 55.463351"E
35	18°57' 52.439545"N	79°30' 57.599641"E
36	18°57' 52.512906"N	79°30' 58.241207"E
37	18°57' 53.939072"N	79°31' 5.035277"E
38	18°57' 55.539751"N	79°31' 11.812174"E
39	18°57' 57.852064"N	79°31' 19.439671"E
40	18°58' 0.922325"N	79°31' 30.797832"E
41	18°58' 3.475783"N	79°31' 39.125902"E
42	18°58' 3.557515"N	79°31' 39.468665"E
43	18°58' 21.975884"N	79°31' 42.808758"E
44	18°58' 36.95686"N	79°31' 45.52716"E
45	18°58' 40.996064"N	79°31' 45.7882"E
46	18°58' 48.328774"N	79°31' 44.400677"E
47	18°58' 54.382804"N	79°31' 43.280841"E

Provisional Cardinal Points for Kalyankhani Block-6

Bounding envelope points		
1	18°59' 21.16"N	79°30' 21.86"E
2	18°57'52.16"N	79°30' 22.66"E
3	18°57' 52.82"N	79°31' 46.21"E
4	18°59' 21.83"N	79°31' 45.43"E

Note: . DGPS survey is required to ascertain the exact location of the points.