

JAREKELA COAL BLOCK SUMMARY

PART A

Sr. No	Features	Details
1.	Location	
	Coal Block	JAREKELA
	Latitude	22° 04' 58" N - 22° 08' 44" N (Provisional)
	Longitude	83° 23' 35" E - 83° 26' 17" E (Provisional)
	Topo Sheet No.	64 N/8
	Coalfield	Mand Raigarh
	Villages	Jarekela, Murhinar, Nawapara, Devgarh
	Tehsil/Taluka	Tamnar
	District	Raigarh
	State	Chhattisgarh
2.	Connectivity with Block	
	Nearest Rail Head	Kharsia and Raigarh railway stations on Howrah – Nagpur section of South Eastern Railway are located in the southern periphery of the coalfield.
	Road	Both the rail heads are connected by two tarred roads with Dharamjaygarh and from Dharamjaygarh, the road leads further north to Ambikapur. The distance from Dharamjaygarh to Raigarh and Kharsia rail heads is 75 kms and 60 kms respectively, while the distance between Dharamjaygarh and Ambikapur is 120 kms.
	Airport	
3.	Area	
	Geological Block Area	19.07 sq.km. (As per shape file. Refer note below)
	Forest Area	2 % (as per FSI Map)
	Non-Forest Area	98 % (as per FSI Map)
4.	Climate and Topography	
	Average Annual Rainfall	1620 mm
	Temperature (Min. — Max.)	18° C- 45° C
	Local Surface Drainage Channels	Pajhar Nadi flowing from north to south in the central part of the block, constitutes the main drainage system. Besides, Dighi and Gardharsi nala with its tributary are present in the block. A few ponds are also located in the block.
	Rivers	Pajhar Nadi flowing from north to south in the central part of the block
5.	Exploration	
	Status	Explored

	Exploration Agency	MECL			
	Total Number of Boreholes with	227 Boreholes; 96277.57 m			
	Borehole Density	Approx. 11.9 Boreholes/sq.km.			
	General Dip of Seams	South westerly dip varying from 2- 4°			
	General Strike Direction	The general strike of the beds is NW–SE			
	Faults	Nine faults viz. F1-F1 and F9-F9 are deciphered to evolve the structure of Jarekela Block. The faults are of low to medium intensity with throw ranging from 0 to 30 m. The dip of these faults is assumed as 60°.			
6.	Coal Seams & Reserve (Proved: 594.03MT, Indicated: 16.62MT)				
	Coal Seams	Thickness Range (m)	Depth Range (m)	Geological Reserve (MT) (Proved + Indicated) (MT)	Grade
	LA1	0.12-0.82	10.30-21.80		G15
	LA2	0.18-1.18	13.47-40.27		G12-G16
	XLD	0.02-0.60	73.00-244.22		G13
	XLC	0.03-1.03	79.92-279.45		G9-G16
	XLB	0.03-1.11	96.82-308.85		G11-G17
	X LA	0.04-0.96	184.59-388.92	0.249012	G8-G17
	X TOP	0.05-3.31	199.14-400.77	14.807222	G6-G17
	X BOT	0.1-4.55	201.92-412.89	70.477068	G9-G17
	IX L2	0.03-1.86	214.31-425.97	4.894511	G7-G17
	IX L1	0.20-1.61	223.00-440.64	5.815788	G1-G17
	IX L	0.02-0.99	233.16-446.99	0.028397	G7-G17
	IX	0.15-4.49	248.30-468.82	64.123127	G7-G16
	VIII	0.06-1.60	267.55-479.62	5.957666	G6-G17
	VIII L	0.85-5.62	280.19-496.22	95.245995	G8-G15
	VII TOP	2.89-4.08	380.82-411.78	0.668588	G11-G14
	VII BOT	0.75-1.43	383.12-414.34	0.194376	G11-G14
	VII COMB	3.30-8.24	298.90-513.00	151.407351	G9-G15
	VI TOP	0.85-4.89	340.89-500.53	4.976614	G8-G16
	VI BOT	1.28-6.73	346.16-505.94	9.375885	G10-G15
	VI COMB	2.35-10.80	317.14-531.44	182.435089	G10-G15
	VIL	0.10-0.92	323.20-533.68		G10-G16
	V L4	0.20-2.10	338.71-569.66		G12-G16
	V TOP	0.20-1.24	342.60-577.92		G12-G13
	V L3	0.31-1.40	244.70-581.52		G10-G12
	V L2	0.24-2.50	346.50-583.50		G11-G16
	V MID	0.39-1.50	349.00-585.23		G8-G13
	V L1	0.25-2.09	354.30-591.11		G11
	V BOT	0.48-1.48	357.32-594.28		G10-G14
	IV	0.59-1.25	478.40-497.20		G10
	IIIL	0.40-0.40	585.15-585.15		
	III	0.02-0.02	641.92-641.92		
	II	0.02-0.02	652.10-652.10		
	I Top	0.12-0.12	714.82-714.82		
		Total		610.656689	
	A total of 36.72 million tonnes additional resources having thickness in between 0.50 m to 0.90 m have also been estimated. Out of this, 35.65 million tonnes falls under net in-situ 'Proved' coal resource and 1.07 million tonnes are under gross 'Indicated' coal resource.				

7.	Surface Constraints	Pajhar Nadi, Digi Nala & Gardharasi Nala flowing through the block. Proposed alignment of rail corridor of NTPC MGR passes through the block.
8.	Grade of the block	G12 (Provisional) based on weighted average grade as per grade-wise data available in GR.
9.	Decision Support System (DSS) Analysis	Wildlife info: The polygon touches Wildlife Habitat(s)- Sloth Bear, Dhole, Elephant Grid
10.	Eco Sensitive Zone (ESZ)	Southern boundary of the block is approx. 41 km from the boundary of ESZ of Debrigarh. SW boundary of the block is approx. 64 km from the boundary of ESZ of Sambalpur Elephant Region and NW boundary of the block is approx. 32 km from the boundary of buffer zone of un-notified Lemru Elephant Reserve.

PART B

Sr.No.	Features	Details
1.	Tentative Peak Rated Mine Capacity	1.74 MTPA

Note.

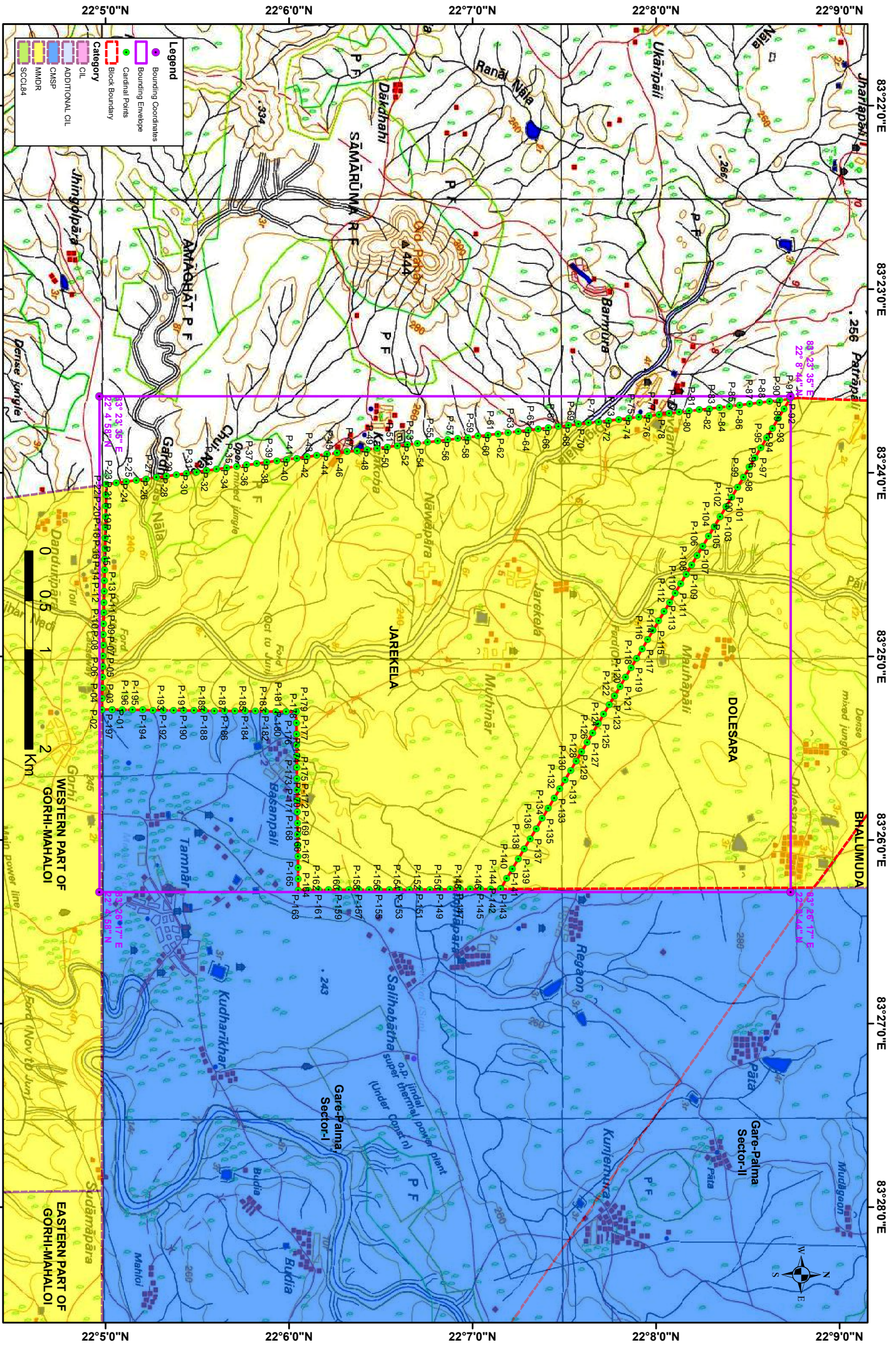
1. Above summary has been prepared based on the report titled “Geological Report on Detailed Exploration for Coal in Jarekela Block Mand Raigarh Coalfield, District: Raigarh, Chhattisgarh-Feb’2021”.
2. Block boundary and cardinal points are provisional and shall be finalized after DGPS Survey of Boundary.

Disclaimer:

1. The analysis is done on Beta-version (Trial Version) of Decision Support System (DSS) of FSI / MOEF.
2. The Decision Rules for various parameters of this DSS System are controlled by FSI.
3. CMPDI only runs this DSS to obtain the status of any block based on these Decision Rules.
4. The database of the Decision Rules is updated by FSI from time to time.
5. CMPDI does not own any responsibility for variation in the results which are based on the Decision Rules of the FSI DSS in case of any updation of the database at FSI end.
6. ESZ analysis and tiger habitat/ corridor given here is based on the information available in public domain. Bidders are encouraged to verify this information and any other information additionally available.

Jarekela Block, Mand Raigarh Coalfield

FOR INTERNAL/RESTRICTED USE ONLY



Note: The map is prepared on WGS84 coordinate system.

Provisional Cardinal Points of Jarekela Block

POINT_ID	LONGITUDE	LATITUDE
P-01	83° 25' 17.373" E	22° 5' 2.191" N
P-02	83° 25' 17.333" E	22° 4' 58.848" N
P-03	83° 25' 13.829" E	22° 4' 58.914" N
P-04	83° 25' 10.326" E	22° 4' 58.981" N
P-05	83° 25' 6.822" E	22° 4' 59.048" N
P-06	83° 25' 3.318" E	22° 4' 59.115" N
P-07	83° 24' 59.814" E	22° 4' 59.181" N
P-08	83° 24' 56.310" E	22° 4' 59.248" N
P-09	83° 24' 52.806" E	22° 4' 59.315" N
P-10	83° 24' 49.303" E	22° 4' 59.381" N
P-11	83° 24' 45.799" E	22° 4' 59.448" N
P-12	83° 24' 42.295" E	22° 4' 59.514" N
P-13	83° 24' 38.791" E	22° 4' 59.581" N
P-14	83° 24' 35.287" E	22° 4' 59.647" N
P-15	83° 24' 31.783" E	22° 4' 59.714" N
P-16	83° 24' 28.280" E	22° 4' 59.780" N
P-17	83° 24' 24.776" E	22° 4' 59.847" N
P-18	83° 24' 21.272" E	22° 4' 59.913" N
P-19	83° 24' 17.768" E	22° 4' 59.980" N
P-20	83° 24' 14.264" E	22° 5' 0.046" N
P-21	83° 24' 10.760" E	22° 5' 0.113" N
P-22	83° 24' 7.256" E	22° 5' 0.179" N
P-23	83° 24' 3.753" E	22° 5' 0.245" N
P-24	83° 24' 3.302" E	22° 5' 3.525" N
P-25	83° 24' 2.851" E	22° 5' 6.804" N
P-26	83° 24' 2.400" E	22° 5' 10.083" N
P-27	83° 24' 1.950" E	22° 5' 13.363" N
P-28	83° 24' 1.499" E	22° 5' 16.642" N
P-29	83° 24' 1.048" E	22° 5' 19.922" N
P-30	83° 24' 0.597" E	22° 5' 23.201" N
P-31	83° 24' 0.147" E	22° 5' 26.481" N
P-32	83° 23' 59.696" E	22° 5' 29.760" N
P-33	83° 23' 59.245" E	22° 5' 33.039" N
P-34	83° 23' 58.794" E	22° 5' 36.319" N
P-35	83° 23' 58.344" E	22° 5' 39.598" N
P-36	83° 23' 57.893" E	22° 5' 42.878" N
P-37	83° 23' 57.442" E	22° 5' 46.157" N
P-38	83° 23' 56.991" E	22° 5' 49.437" N
P-39	83° 23' 56.540" E	22° 5' 52.716" N
P-40	83° 23' 56.090" E	22° 5' 55.995" N
P-41	83° 23' 55.639" E	22° 5' 59.275" N
P-42	83° 23' 55.188" E	22° 6' 2.554" N
P-43	83° 23' 54.737" E	22° 6' 5.834" N
P-44	83° 23' 54.286" E	22° 6' 9.113" N
P-45	83° 23' 53.895" E	22° 6' 12.403" N

Provisional Cardinal Points of Jarekela Block		
POINT_ID	LONGITUDE	LATITUDE
P-46	83° 23' 53.503" E	22° 6' 15.693" N
P-47	83° 23' 53.112" E	22° 6' 18.982" N
P-48	83° 23' 52.720" E	22° 6' 22.272" N
P-49	83° 23' 52.328" E	22° 6' 25.562" N
P-50	83° 23' 51.937" E	22° 6' 28.851" N
P-51	83° 23' 51.545" E	22° 6' 32.141" N
P-52	83° 23' 51.154" E	22° 6' 35.431" N
P-53	83° 23' 50.762" E	22° 6' 38.720" N
P-54	83° 23' 50.371" E	22° 6' 42.010" N
P-55	83° 23' 49.979" E	22° 6' 45.300" N
P-56	83° 23' 49.587" E	22° 6' 48.589" N
P-57	83° 23' 49.196" E	22° 6' 51.879" N
P-58	83° 23' 48.804" E	22° 6' 55.169" N
P-59	83° 23' 48.412" E	22° 6' 58.458" N
P-60	83° 23' 48.021" E	22° 7' 1.748" N
P-61	83° 23' 47.629" E	22° 7' 5.038" N
P-62	83° 23' 47.238" E	22° 7' 8.327" N
P-63	83° 23' 46.846" E	22° 7' 11.617" N
P-64	83° 23' 46.454" E	22° 7' 14.907" N
P-65	83° 23' 46.063" E	22° 7' 18.196" N
P-66	83° 23' 45.671" E	22° 7' 21.486" N
P-67	83° 23' 45.279" E	22° 7' 24.776" N
P-68	83° 23' 44.888" E	22° 7' 28.065" N
P-69	83° 23' 44.496" E	22° 7' 31.355" N
P-70	83° 23' 44.104" E	22° 7' 34.645" N
P-71	83° 23' 43.713" E	22° 7' 37.934" N
P-72	83° 23' 43.321" E	22° 7' 41.224" N
P-73	83° 23' 42.929" E	22° 7' 44.514" N
P-74	83° 23' 42.537" E	22° 7' 47.803" N
P-75	83° 23' 42.146" E	22° 7' 51.093" N
P-76	83° 23' 41.754" E	22° 7' 54.383" N
P-77	83° 23' 41.362" E	22° 7' 57.672" N
P-78	83° 23' 40.971" E	22° 8' 0.962" N
P-79	83° 23' 40.579" E	22° 8' 4.252" N
P-80	83° 23' 40.187" E	22° 8' 7.542" N
P-81	83° 23' 39.795" E	22° 8' 10.831" N
P-82	83° 23' 39.404" E	22° 8' 14.121" N
P-83	83° 23' 39.012" E	22° 8' 17.411" N
P-84	83° 23' 38.620" E	22° 8' 20.700" N
P-85	83° 23' 38.228" E	22° 8' 23.990" N
P-86	83° 23' 37.837" E	22° 8' 27.280" N
P-87	83° 23' 37.445" E	22° 8' 30.569" N
P-88	83° 23' 37.053" E	22° 8' 33.859" N
P-89	83° 23' 36.661" E	22° 8' 37.149" N
P-90	83° 23' 36.269" E	22° 8' 40.438" N

Provisional Cardinal Points of Jarekela Block

POINT_ID	LONGITUDE	LATITUDE
P-91	83° 23' 35.878" E	22° 8' 43.728" N
P-92	83° 23' 39.058" E	22° 8' 41.837" N
P-93	83° 23' 42.238" E	22° 8' 39.945" N
P-94	83° 23' 45.418" E	22° 8' 38.054" N
P-95	83° 23' 48.599" E	22° 8' 36.163" N
P-96	83° 23' 51.815" E	22° 8' 34.262" N
P-97	83° 23' 55.031" E	22° 8' 32.362" N
P-98	83° 23' 58.247" E	22° 8' 30.461" N
P-99	83° 24' 1.464" E	22° 8' 28.561" N
P-100	83° 24' 4.680" E	22° 8' 26.660" N
P-101	83° 24' 7.896" E	22° 8' 24.759" N
P-102	83° 24' 11.112" E	22° 8' 22.859" N
P-103	83° 24' 14.328" E	22° 8' 20.958" N
P-104	83° 24' 17.544" E	22° 8' 19.058" N
P-105	83° 24' 20.760" E	22° 8' 17.157" N
P-106	83° 24' 23.976" E	22° 8' 15.256" N
P-107	83° 24' 27.033" E	22° 8' 13.453" N
P-108	83° 24' 30.089" E	22° 8' 11.650" N
P-109	83° 24' 33.145" E	22° 8' 9.847" N
P-110	83° 24' 36.201" E	22° 8' 8.043" N
P-111	83° 24' 39.258" E	22° 8' 6.240" N
P-112	83° 24' 42.314" E	22° 8' 4.437" N
P-113	83° 24' 45.370" E	22° 8' 2.633" N
P-114	83° 24' 48.426" E	22° 8' 0.830" N
P-115	83° 24' 51.483" E	22° 7' 59.027" N
P-116	83° 24' 54.539" E	22° 7' 57.223" N
P-117	83° 24' 57.589" E	22° 7' 55.427" N
P-118	83° 25' 0.638" E	22° 7' 53.630" N
P-119	83° 25' 3.688" E	22° 7' 51.834" N
P-120	83° 25' 6.738" E	22° 7' 50.037" N
P-121	83° 25' 9.788" E	22° 7' 48.241" N
P-122	83° 25' 12.837" E	22° 7' 46.444" N
P-123	83° 25' 15.887" E	22° 7' 44.648" N
P-124	83° 25' 18.937" E	22° 7' 42.851" N
P-125	83° 25' 21.986" E	22° 7' 41.055" N
P-126	83° 25' 25.036" E	22° 7' 39.258" N
P-127	83° 25' 28.085" E	22° 7' 37.462" N
P-128	83° 25' 31.135" E	22° 7' 35.665" N
P-129	83° 25' 34.185" E	22° 7' 33.868" N
P-130	83° 25' 37.234" E	22° 7' 32.072" N
P-131	83° 25' 40.284" E	22° 7' 30.275" N
P-132	83° 25' 43.333" E	22° 7' 28.478" N
P-133	83° 25' 46.383" E	22° 7' 26.682" N
P-134	83° 25' 49.673" E	22° 7' 24.731" N
P-135	83° 25' 52.963" E	22° 7' 22.780" N

Provisional Cardinal Points of Jarekela Block		
POINT_ID	LONGITUDE	LATITUDE
P-136	83° 25' 56.254" E	22° 7' 20.829" N
P-137	83° 25' 59.544" E	22° 7' 18.878" N
P-138	83° 26' 2.834" E	22° 7' 16.927" N
P-139	83° 26' 6.125" E	22° 7' 14.976" N
P-140	83° 26' 9.415" E	22° 7' 13.025" N
P-141	83° 26' 12.612" E	22° 7' 11.133" N
P-142	83° 26' 15.809" E	22° 7' 9.241" N
P-143	83° 26' 16.036" E	22° 7' 9.197" N
P-144	83° 26' 16.050" E	22° 7' 5.889" N
P-145	83° 26' 16.065" E	22° 7' 2.581" N
P-146	83° 26' 16.080" E	22° 6' 59.273" N
P-147	83° 26' 16.095" E	22° 6' 55.965" N
P-148	83° 26' 16.110" E	22° 6' 52.657" N
P-149	83° 26' 16.124" E	22° 6' 49.349" N
P-150	83° 26' 16.139" E	22° 6' 46.041" N
P-151	83° 26' 16.154" E	22° 6' 42.733" N
P-152	83° 26' 16.169" E	22° 6' 39.425" N
P-153	83° 26' 16.183" E	22° 6' 36.117" N
P-154	83° 26' 16.198" E	22° 6' 32.809" N
P-155	83° 26' 16.213" E	22° 6' 29.501" N
P-156	83° 26' 16.228" E	22° 6' 26.193" N
P-157	83° 26' 16.243" E	22° 6' 22.885" N
P-158	83° 26' 16.257" E	22° 6' 19.577" N
P-159	83° 26' 16.272" E	22° 6' 16.269" N
P-160	83° 26' 16.287" E	22° 6' 12.961" N
P-161	83° 26' 16.302" E	22° 6' 9.653" N
P-162	83° 26' 16.317" E	22° 6' 6.345" N
P-163	83° 26' 16.331" E	22° 6' 3.037" N
P-164	83° 26' 12.691" E	22° 6' 2.995" N
P-165	83° 26' 9.051" E	22° 6' 2.953" N
P-166	83° 26' 5.411" E	22° 6' 2.911" N
P-167	83° 26' 1.771" E	22° 6' 2.870" N
P-168	83° 25' 58.130" E	22° 6' 2.828" N
P-169	83° 25' 54.490" E	22° 6' 2.786" N
P-170	83° 25' 50.850" E	22° 6' 2.744" N
P-171	83° 25' 47.210" E	22° 6' 2.701" N
P-172	83° 25' 43.570" E	22° 6' 2.659" N
P-173	83° 25' 39.929" E	22° 6' 2.617" N
P-174	83° 25' 36.289" E	22° 6' 2.575" N
P-175	83° 25' 32.649" E	22° 6' 2.533" N
P-176	83° 25' 29.009" E	22° 6' 2.491" N
P-177	83° 25' 25.369" E	22° 6' 2.449" N
P-178	83° 25' 21.728" E	22° 6' 2.406" N
P-179	83° 25' 18.088" E	22° 6' 2.364" N
P-180	83° 25' 18.049" E	22° 5' 59.021" N

Provisional Cardinal Points of Jarekela Block		
POINT_ID	LONGITUDE	LATITUDE
P-181	83° 25' 18.009" E	22° 5' 55.678" N
P-182	83° 25' 17.969" E	22° 5' 52.335" N
P-183	83° 25' 17.929" E	22° 5' 48.992" N
P-184	83° 25' 17.890" E	22° 5' 45.649" N
P-185	83° 25' 17.850" E	22° 5' 42.306" N
P-186	83° 25' 17.810" E	22° 5' 38.963" N
P-187	83° 25' 17.770" E	22° 5' 35.620" N
P-188	83° 25' 17.731" E	22° 5' 32.277" N
P-189	83° 25' 17.691" E	22° 5' 28.934" N
P-190	83° 25' 17.651" E	22° 5' 25.591" N
P-191	83° 25' 17.611" E	22° 5' 22.248" N
P-192	83° 25' 17.572" E	22° 5' 18.905" N
P-193	83° 25' 17.532" E	22° 5' 15.563" N
P-194	83° 25' 17.492" E	22° 5' 12.220" N
P-195	83° 25' 17.452" E	22° 5' 8.877" N
P-196	83° 25' 17.413" E	22° 5' 5.534" N
P-197	83° 25' 17.373" E	22° 5' 2.191" N