

Hingna Bazargaon Block Summary PART A

Sr. No.	Features	Details
1.	Location	
	Coal Block	HINGNA BAZARGAON
	Latitude	21° 2' 22" N-21° 10' 50" N (Provisional)
	Longitude	78° 53' 16" E-78° 57' 26" E (Provisional)
	Topo Sheet No.	55K/16
	Coalfield	KAMPTEE
	Villages	Gondakhairi, Metaumari, Sinka, Mangrul, Girola, Ukhali Settlements
	Tehsil/Taluka	Kalmeshwar, Nagpur Rural
	District	Nagpur
	State	Maharashtra
2.	Connectivity with Block	
	Nearest Rail Head	The nearest railway station Nagpur is about 11 km east of the block.
	Road	The Katol-Nagpur road passes about 3.5 to 4 km north beyond the limit of the block. The northern and eastern limits of the area can be approached by Katol road and Wardha road respectively. The Amaravati road runs through the northern half of the investigated area from east to west.
	Airport	Dr. Babasaheb Ambedkar International airport
3.	Area	
	Geological Block Area	37.9 sq km (As per shape file. Refer note below)
	Forest Area	Non-Forest (as per Toposheet)
	Non-Forest Area	
4.	Climate and Topography	
	Average Annual Rainfall	1168 mm
	Temperature (Min. — Max.)	9°C-48°C
	Local Surface Drainage Channels	The drainage is of dendritic pattern draining away in several directions and from the tributaries of Vena river flowing to the SE.
	Rivers	-
5.	Exploration	
	Status	REGIONALLY EXPLORED
	Exploration Agency	MECL
	Total Number of Boreholes with meterage	9 Boreholes; 4101.70 m
	Borehole Density	Approx. 0.24 BHs/sq.km.

	General Dip of Seams	The dip of Barakar formation is south westerly and it shows variation from 6° to 9° in magnitude.			
	General Strike Direction	The strike in general is due NW-SE			
	Faults	-			
6.	Coal Seams & Reserve				
	Coal Seams	Thickness Range (m)	Depth Range (m)	Resources (MT) (Inferred)	Grade
	X	0.05-1.39	Beyond 350 m		D-G
	IX	0.06-2.55			C-F
	VIII	0.53-3.37			C-G
	VII	0.06-1.30			C-G
	VI	0.05-0.81			B-G
	V	0.16-4.14			B-G
	IV	0.03-1.33			C-G
	III	1.60-9.50			B-F
	II	0.09-2.55			B-F
	I	0.09-0.90			B-G
	Total			180	
7.	Surface Constraints	NH 53 and SH 255 Pass Through This block; MSEB Electric Substation; Gondakhairi, Metaumari, Sinka, Mangrul, Girola, Ukhali Settlements;			
8.	Grade of coal	G8 (Provisional), Based on seam-wise grade-wise data available in Regional GR.			
9.	Decision Support System (DSS) Analysis	Hydrology info: The polygon touches major river(s)			
10.	Eco Sensitive Zone (ESZ)	Northern boundary of the block is approx. 32 km from the boundary of ESZ of PENCH. Southern boundary of the block is approx. 15 km from the boundary of TR-PA of Bor.			

Note:

1. The summary has been compiled from “Geological Report on Priority Regional Exploration for Coal, Hingna Bazargaon Block, Katol Basin, Dist. Nagpur, Maharashtra. November-2000” by MECL.

Disclaimer:

1. The analysis is done on Beta-version (Trial Version) of Decision Support System (DSS) of FSI / MOEF.
2. The Decision Rules for various parameters of this DSS System are controlled by FSI.
3. CMPDI only runs this DSS to obtain the status of any block based on these Decision Rules.
4. The database of the Decision Rules is updated by FSI from time to time.
5. CMPDI does not own any responsibility for variation in the results which are based on the Decision Rules of the FSI DSS in case of any updation of the database at FSI end.
6. ESZ analysis and tiger habitat/ corridor given here is based on the information available in public domain. Bidders are encouraged to verify this information and any other information additionally available.

21°2'0"N 21°3'0"N 21°4'0"N 21°5'0"N 21°6'0"N 21°7'0"N 21°8'0"N 21°9'0"N 21°10'0"N 21°11'0"N

78°49'0"E 78°50'0"E 78°51'0"E 78°52'0"E 78°53'0"E 78°54'0"E 78°55'0"E 78°56'0"E 78°57'0"E 78°58'0"E 78°59'0"E 79°0'0"E 79°1'0"E 79°2'0"E 79°3'0"E

Hingna Bazargaon Block, Kamptee Coalfield

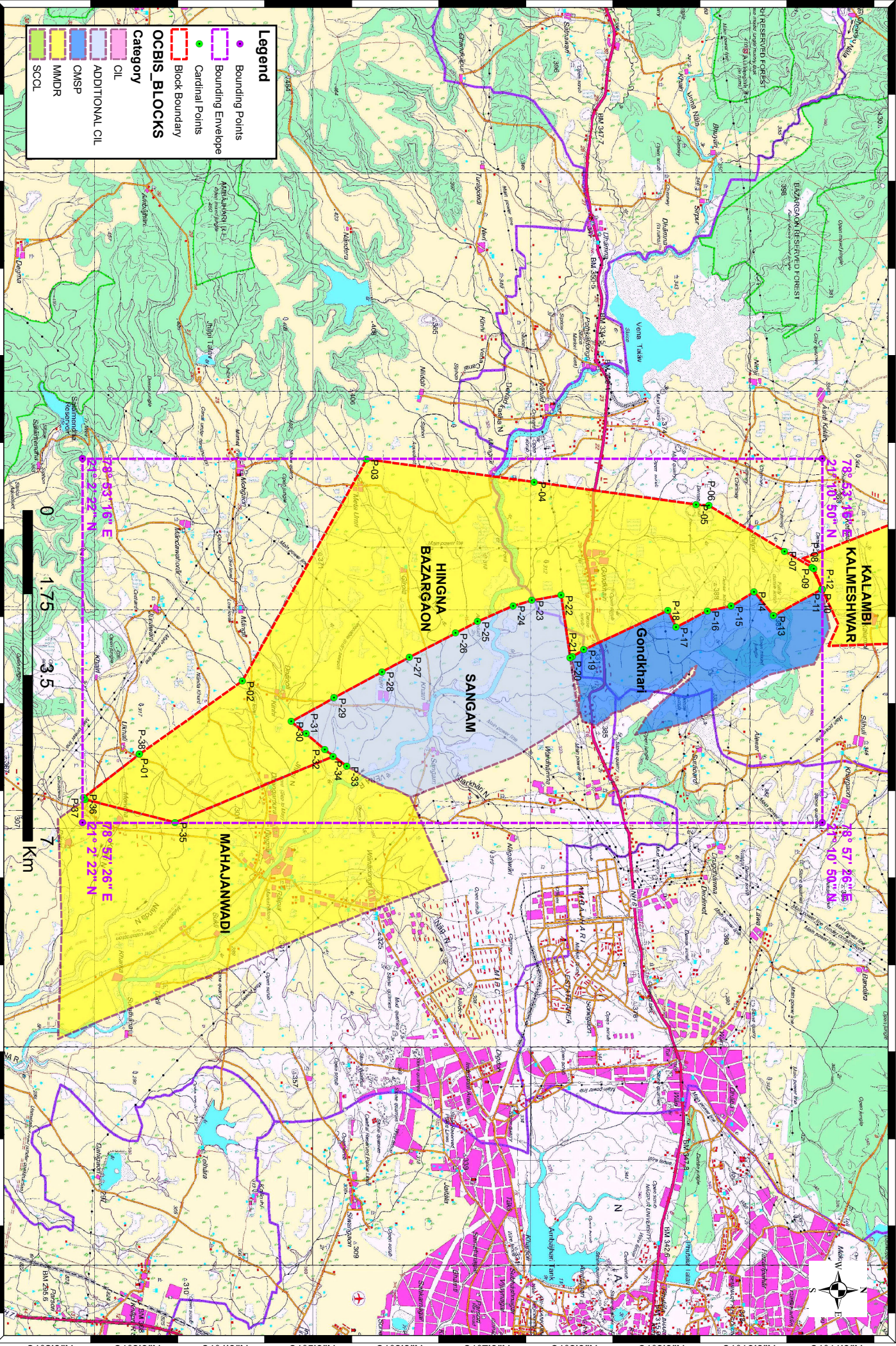
FOR INTERNAL/RESTRICTED USE ONLY

Legend

- Bounding Points
- Bounding Envelope
- Cardinal Points
- Block Boundary

OCBIS_BLOCKS Category

- CIL
- ADDITIONAL CIL
- CMSP
- MMDR
- SCCL



21°2'0"N 21°3'0"N 21°4'0"N 21°5'0"N 21°6'0"N 21°7'0"N 21°8'0"N 21°9'0"N 21°10'0"N 21°11'0"N

Provisional Cardinal Points for HINGNA BAZARGAON Block

POINT NO	Longitude (WGS84)	Latitude (WGS84)
P-1	78° 56' 38.793" E	21° 3' 1.182" N
P-2	78° 55' 48.483" E	21° 4' 11.823" N
P-3	78° 53' 16.353" E	21° 5' 37.204" N
P-4	78° 53' 31.899" E	21° 7' 32.226" N
P-5	78° 53' 47.410" E	21° 9' 23.483" N
P-6	78° 53' 47.992" E	21° 9' 32.156" N
P-7	78° 54' 19.400" E	21° 10' 24.226" N
P-8	78° 54' 30.488" E	21° 10' 43.072" N
P-9	78° 54' 31.404" E	21° 10' 44.363" N
P-10	78° 54' 45.535" E	21° 10' 49.981" N
P-11	78° 54' 45.626" E	21° 10' 49.787" N
P-12	78° 54' 45.630" E	21° 10' 49.778" N
P-13	78° 55' 3.696" E	21° 10' 16.523" N
P-14	78° 54' 47.239" E	21° 10' 3.266" N
P-15	78° 54' 57.235" E	21° 9' 47.512" N
P-16	78° 55' 0.243" E	21° 9' 31.171" N
P-17	78° 55' 11.615" E	21° 9' 9.715" N
P-18	78° 55' 0.200" E	21° 9' 3.989" N
P-19	78° 55' 27.038" E	21° 8' 6.289" N
P-20	78° 55' 31.815" E	21° 7' 58.546" N
P-21	78° 55' 32.615" E	21° 7' 57.043" N
P-22	78° 54' 49.616" E	21° 7' 50.680" N
P-23	78° 54' 53.252" E	21° 7' 30.648" N
P-24	78° 54' 56.861" E	21° 7' 17.921" N
P-25	78° 55' 7.731" E	21° 6' 53.374" N
P-26	78° 55' 15.673" E	21° 6' 38.251" N
P-27	78° 55' 32.205" E	21° 6' 6.631" N
P-28	78° 55' 42.187" E	21° 5' 47.794" N
P-29	78° 56' 0.066" E	21° 5' 14.876" N
P-30	78° 56' 16.421" E	21° 4' 45.603" N
P-31	78° 56' 24.782" E	21° 4' 55.592" N
P-32	78° 56' 35.565" E	21° 5' 8.474" N
P-33	78° 56' 47.075" E	21° 5' 23.560" N
P-34	78° 56' 40.277" E	21° 5' 14.153" N
P-35	78° 57' 25.533" E	21° 3' 25.544" N
P-36	78° 57' 9.736" E	21° 2' 23.845" N
P-37	78° 57' 8.571" E	21° 2' 22.796" N