

GOMARPAHARI SIULIBANA COAL BLOCK SUMMARY

PART A

Sr. No.	Features	Details
1.	Location	
	Coal Block	GOMARPAHARI SIULIBANA
	Latitude	24° 7' 38" N - 24° 10' 48" N (Provisional)
	Longitude	87° 32' 18" E - 87° 36' 31" E (Provisional)
	Topo Sheet No.	G45V12 (Old: 72P/12)
	Coalfield	Brahmani
	Villages	Jhikra, Khjortola, Banspahari, Kamartola, Hesatola, Kasitola, Jajotola, Chaklitola, Dahutola, Badalpara, Dedaha, Goldaha, Sihalibona, Ramjan, Jiapani, Astakandar
	Tehsil/Taluka	Shikaripara
	District	Dumka
	State	Jharkhand
2.	Connectivity with Block	
	Nearest Rail Head	The nearest railhead Mallarpur is about 15 km towards the southeast of the area of exploration.
	Road	The sector is located to the south of the highway connecting Rampurhat, a subdivisional town of Birbhum in West Bengal and Dumka in Jharkhand. The interior parts of the sector are well connected by unmetalled roads.
	Airport	Kazi Nazrul Islam Airport
3.	Area	
	Geological Block Area	23.32 sq.km.(As per shape file- Refer note below)
	Green Cover	0.772 sq.km.
	Area excluding green cover	22.545 sq.km.
4.	Climate and Topography	
	Average Annual Rainfall	1422mm
	Temperature (Min. — Max.)	Summer- 42°C, Winter-10°C
	Local Surface Drainage Channels	The terrain is low upland of rolling topography having general altitude between 80m and 190m above M.S.L. and is ornamented with rocky exposures of basalts of Rajmahal Formation. Mansa Pahar (maximum height 228m) and Lutia Pahar are the two prominent physiographic features situated to the south and west respectively of the present block. The overall slope of the area is northerly in the western part and easterly in the eastern part. Small streamlets fed by rainwater and springs have formed a dendritic drainage pattern in the area. Around 10% of the area in the western and southern portion of the block is covered by protected forest.
	Rivers	
5.	Exploration	

	Status	Regionally Explored			
	Exploration Agency	GSI			
	Total Number of Boreholes with meterage	6 Boreholes, 3520.10 m			
	Borehole Density	Approx. 0.26 Borehole/sq.km.			
	General Dip of Seams	Gently dipping (3°-5°) westerly			
	General Strike Direction	NNW-SSE			
	Faults	1 fault hading easterly with a throw of 47m			
6.	Coal Seams & Reserve				
	Coal Seams	Thickness Range (m)	Depth Range (m)	Geological Reserve (MT)	Grade
	Zone-V/ E	1.8-6.6			B-G
	Zone-IV/ D	10.5-14.1			B-G
	Zone-III/ C	7.5-23.7			C-G
	Zone-II/ B	8.4-34.9			B-G
	Zone-I/ A	1.2-12			D-G
	LO	1.9			E
	LA	1.2-3.1			D-F
	LB	1.45-3.05			D
	LE	1.8-2.45			E-G
		Total		1900	
7.	Surface Constraints	NA			
8.	Grade of coal	G-9 (Provisional) Based on quality data of adjacent blocks. Hence, the average grade is highly tentative.			
9.	Decision Support System (DSS) Analysis	Not Inviolate			
10.	Eco Sensitive Zone (ESZ)	The ESZ boundary of Udawalake is approx. 87 kms from N-E block boundary.			

Note:

1. The summary has been compiled from “**Final Report on Regional Exploration For Coal in Gosaipahari-Siulibana Block, in Trap Covered Areas of Brahmani Basin, Rajmahal Group of Coalfields, Dumka District, Jharkhand**”
2. The block boundary is provisional and the cardinal points, bounding co-ordinates are approximate. Field DGPS survey is required to ascertain the exact area.

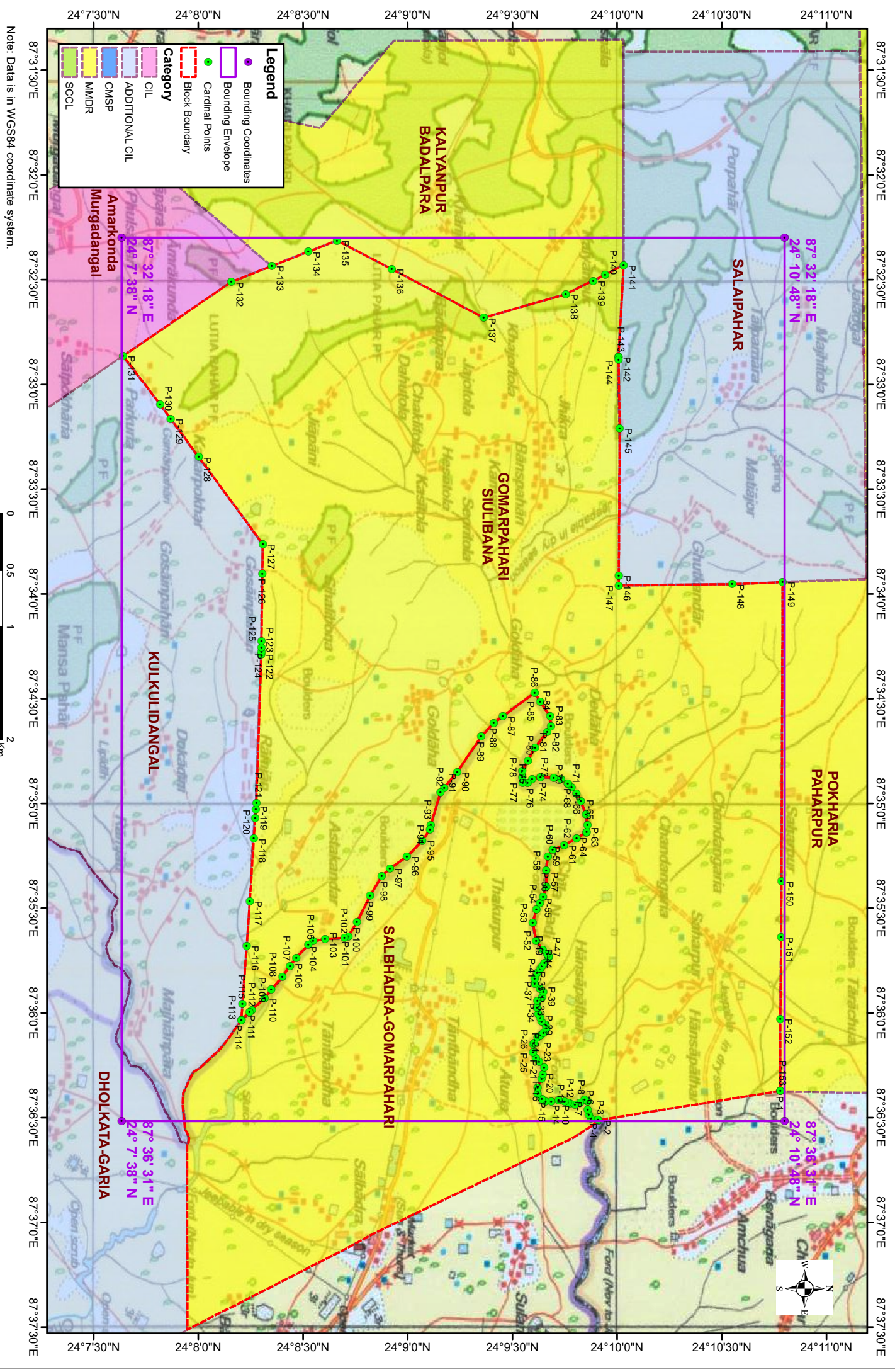
Disclaimer:

1. The analysis is done on Beta-version (Trial Version) of Decision Support System (DSS) of FSI / MOEF.

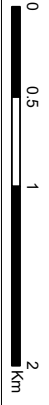
2. The Decision Rules for various parameters of this DSS System are controlled by FSI.
3. CMPDI only runs this DSS to obtain the status of any block based on these Decision Rules.
4. The database of the Decision Rules is updated by FSI from time to time.
5. CMPDI does not own any responsibility for variation in the results which are based on the Decision Rules of the FSI DSS in case of any updation of the database at FSI end.
6. ESZ analysis and tiger habitat/ corridor given here is based on the information available in public domain. Bidders are encouraged to verify this information and any other information additionally available.

Gomarparhari Siulibana Block, Rajmahal Coalfield

FOR INTERNAL/RESTRICTED USE ONLY



Note: Data is in WGS84 coordinate system.



Provisional Cardinal Points for GOMARPAHARI SIULIBANA Block

POINT NO	Longitude (WGS84)	Latitude (WGS84)
P-1	87° 36' 22.349" E	24° 10' 46.761" N
P-2	87° 36' 30.705" E	24° 9' 54.689" N
P-3	87° 36' 30.583" E	24° 9' 54.524" N
P-4	87° 36' 30.264" E	24° 9' 52.465" N
P-5	87° 36' 29.177" E	24° 9' 51.901" N
P-6	87° 36' 27.628" E	24° 9' 51.552" N
P-7	87° 36' 25.383" E	24° 9' 51.561" N
P-8	87° 36' 24.759" E	24° 9' 50.641" N
P-9	87° 36' 25.682" E	24° 9' 49.358" N
P-10	87° 36' 26.294" E	24° 9' 47.865" N
P-11	87° 36' 26.001" E	24° 9' 46.461" N
P-12	87° 36' 25.745" E	24° 9' 45.867" N
P-13	87° 36' 25.352" E	24° 9' 44.956" N
P-14	87° 36' 24.957" E	24° 9' 43.254" N
P-15	87° 36' 25.411" E	24° 9' 41.121" N
P-16	87° 36' 25.326" E	24° 9' 39.488" N
P-17	87° 36' 24.624" E	24° 9' 38.425" N
P-18	87° 36' 23.225" E	24° 9' 37.224" N
P-19	87° 36' 21.445" E	24° 9' 37.231" N
P-20	87° 36' 18.895" E	24° 9' 38.306" N
P-21	87° 36' 17.592" E	24° 9' 38.633" N
P-22	87° 36' 15.726" E	24° 9' 39.100" N
P-23	87° 36' 14.001" E	24° 9' 37.639" N
P-24	87° 36' 12.850" E	24° 9' 36.697" N
P-25	87° 36' 11.376" E	24° 9' 35.921" N
P-26	87° 36' 8.976" E	24° 9' 35.931" N
P-27	87° 36' 8.540" E	24° 9' 36.221" N
P-28	87° 36' 7.047" E	24° 9' 37.217" N
P-29	87° 36' 6.366" E	24° 9' 38.058" N
P-30	87° 36' 5.662" E	24° 9' 38.927" N
P-31	87° 36' 4.350" E	24° 9' 39.713" N
P-32	87° 36' 3.420" E	24° 9' 39.504" N
P-33	87° 36' 2.408" E	24° 9' 38.371" N
P-34	87° 36' 1.454" E	24° 9' 37.922" N
P-35	87° 36' 0.314" E	24° 9' 37.385" N
P-36	87° 35' 58.532" E	24° 9' 37.037" N
P-37	87° 35' 56.520" E	24° 9' 37.116" N
P-38	87° 35' 55.365" E	24° 9' 38.470" N
P-39	87° 35' 53.896" E	24° 9' 38.831" N
P-40	87° 35' 53.040" E	24° 9' 37.840" N
P-41	87° 35' 51.640" E	24° 9' 36.425" N
P-42	87° 35' 50.169" E	24° 9' 36.360" N
P-43	87° 35' 48.547" E	24° 9' 37.076" N
P-44	87° 35' 47.386" E	24° 9' 37.929" N
P-45	87° 35' 46.582" E	24° 9' 38.521" N
P-46	87° 35' 45.672" E	24° 9' 39.177" N
P-47	87° 35' 44.020" E	24° 9' 40.310" N

Provisional Cardinal Points for GOMARPAHARI SIULIBANA Block

P-48	87° 35' 43.840" E	24° 9' 40.433" N
P-49	87° 35' 43.664" E	24° 9' 40.326" N
P-50	87° 35' 43.142" E	24° 9' 40.009" N
P-51	87° 35' 41.975" E	24° 9' 38.664" N
P-52	87° 35' 39.334" E	24° 9' 36.828" N
P-53	87° 35' 34.144" E	24° 9' 35.854" N
P-54	87° 35' 30.355" E	24° 9' 36.863" N
P-55	87° 35' 28.522" E	24° 9' 37.823" N
P-56	87° 35' 26.803" E	24° 9' 38.723" N
P-57	87° 35' 23.866" E	24° 9' 39.729" N
P-58	87° 35' 19.222" E	24° 9' 39.676" N
P-59	87° 35' 15.121" E	24° 9' 40.118" N
P-60	87° 35' 13.270" E	24° 9' 41.545" N
P-61	87° 35' 11.969" E	24° 9' 44.817" N
P-62	87° 35' 9.998" E	24° 9' 48.387" N
P-63	87° 35' 8.241" E	24° 9' 51.167" N
P-64	87° 35' 8.190" E	24° 9' 51.226" N
P-65	87° 35' 6.117" E	24° 9' 51.516" N
P-66	87° 35' 3.173" E	24° 9' 51.101" N
P-67	87° 34' 59.296" E	24° 9' 49.624" N
P-68	87° 34' 57.147" E	24° 9' 48.335" N
P-69	87° 34' 55.314" E	24° 9' 46.913" N
P-70	87° 34' 54.470" E	24° 9' 45.976" N
P-71	87° 34' 54.337" E	24° 9' 45.829" N
P-72	87° 34' 53.024" E	24° 9' 43.920" N
P-73	87° 34' 52.593" E	24° 9' 41.857" N
P-74	87° 34' 52.435" E	24° 9' 37.987" N
P-75	87° 34' 52.987" E	24° 9' 35.662" N
P-76	87° 34' 54.106" E	24° 9' 34.367" N
P-77	87° 34' 54.100" E	24° 9' 32.948" N
P-78	87° 34' 52.552" E	24° 9' 32.824" N
P-79	87° 34' 50.724" E	24° 9' 32.831" N
P-80	87° 34' 47.778" E	24° 9' 34.391" N
P-81	87° 34' 43.990" E	24° 9' 36.470" N
P-82	87° 34' 39.505" E	24° 9' 39.971" N
P-83	87° 34' 37.822" E	24° 9' 41.010" N
P-84	87° 34' 35.008" E	24° 9' 40.763" N
P-85	87° 34' 30.776" E	24° 9' 37.940" N
P-86	87° 34' 28.238" E	24° 9' 36.401" N
P-87	87° 34' 35.088" E	24° 9' 27.213" N
P-88	87° 34' 36.904" E	24° 9' 24.618" N
P-89	87° 34' 40.889" E	24° 9' 21.039" N
P-90	87° 34' 50.984" E	24° 9' 14.162" N
P-91	87° 34' 55.543" E	24° 9' 10.424" N
P-92	87° 34' 56.791" E	24° 9' 9.365" N
P-93	87° 35' 6.176" E	24° 9' 6.609" N
P-94	87° 35' 7.536" E	24° 9' 6.341" N
P-95	87° 35' 10.695" E	24° 9' 4.175" N

Provisional Cardinal Points for GOMARPAHARI SIULIBANA Block

P-96	87° 35' 15.223" E	24° 8' 59.720" N
P-97	87° 35' 18.606" E	24° 8' 54.912" N
P-98	87° 35' 20.863" E	24° 8' 52.511" N
P-99	87° 35' 26.451" E	24° 8' 49.203" N
P-100	87° 35' 34.013" E	24° 8' 45.470" N
P-101	87° 35' 38.079" E	24° 8' 42.999" N
P-102	87° 35' 38.538" E	24° 8' 41.861" N
P-103	87° 35' 38.809" E	24° 8' 36.328" N
P-104	87° 35' 39.503" E	24° 8' 32.908" N
P-105	87° 35' 40.425" E	24° 8' 31.484" N
P-106	87° 35' 44.238" E	24° 8' 28.040" N
P-107	87° 35' 46.562" E	24° 8' 26.232" N
P-108	87° 35' 49.667" E	24° 8' 24.043" N
P-109	87° 35' 53.305" E	24° 8' 20.914" N
P-110	87° 35' 55.709" E	24° 8' 19.008" N
P-111	87° 35' 59.175" E	24° 8' 15.308" N
P-112	87° 35' 59.749" E	24° 8' 14.663" N
P-113	87° 36' 2.003" E	24° 8' 12.402" N
P-114	87° 36' 2.070" E	24° 8' 12.334" N
P-115	87° 35' 57.516" E	24° 8' 12.647" N
P-116	87° 35' 40.816" E	24° 8' 13.832" N
P-117	87° 35' 28.045" E	24° 8' 14.738" N
P-118	87° 35' 10.063" E	24° 8' 15.919" N
P-119	87° 35' 4.222" E	24° 8' 16.310" N
P-120	87° 35' 1.770" E	24° 8' 16.475" N
P-121	87° 34' 59.908" E	24° 8' 16.599" N
P-122	87° 34' 17.275" E	24° 8' 18.044" N
P-123	87° 34' 16.669" E	24° 8' 18.065" N
P-124	87° 34' 15.418" E	24° 8' 18.081" N
P-125	87° 34' 13.576" E	24° 8' 18.106" N
P-126	87° 33' 54.234" E	24° 8' 18.362" N
P-127	87° 33' 45.725" E	24° 8' 18.475" N
P-128	87° 33' 20.804" E	24° 8' 0.111" N
P-129	87° 33' 9.925" E	24° 7' 52.097" N
P-130	87° 33' 5.696" E	24° 7' 49.017" N
P-131	87° 32' 51.833" E	24° 7' 38.451" N
P-132	87° 32' 30.656" E	24° 8' 9.420" N
P-133	87° 32' 26.111" E	24° 8' 21.009" N
P-134	87° 32' 22.003" E	24° 8' 31.497" N
P-135	87° 32' 18.788" E	24° 8' 39.704" N
P-136	87° 32' 26.948" E	24° 8' 55.404" N
P-137	87° 32' 40.918" E	24° 9' 21.766" N
P-138	87° 32' 34.145" E	24° 9' 45.293" N
P-139	87° 32' 30.279" E	24° 9' 53.110" N
P-140	87° 32' 28.597" E	24° 9' 56.511" N
P-141	87° 32' 25.798" E	24° 10' 1.868" N
P-142	87° 32' 52.147" E	24° 10' 0.410" N
P-143	87° 32' 52.184" E	24° 10' 0.395" N

Provisional Cardinal Points for GOMARPAHARI SIULIBANA Block

P-144	87° 32' 53.036" E	24° 10' 0.410" N
P-145	87° 33' 12.510" E	24° 10' 0.750" N
P-146	87° 33' 54.770" E	24° 10' 0.474" N
P-147	87° 33' 57.568" E	24° 10' 0.456" N
P-148	87° 33' 57.212" E	24° 10' 32.970" N
P-149	87° 33' 56.642" E	24° 10' 47.444" N
P-150	87° 35' 22.334" E	24° 10' 47.064" N
P-151	87° 35' 38.219" E	24° 10' 47.003" N
P-152	87° 36' 1.703" E	24° 10' 46.761" N

Note: The provisional cardinal points are in WGS84 coordinate system. These points are extracted through ArcGIS software after georeferencing of block boundary and onground DGPS survey is required to ascertain the exact location of the points.