

Dip Extn of Belpahar Block Summary
PART A

Sr. No.	Features	Details
1.	Location	
	Coal Block	Dip Extn of Belpahar
	Latitude	21° 45' 3" N-21° 48' 40" N (Provisional)
	Longitude	83° 45' 59" E-21° 48' 40" N (Provisional)
	Topo Sheet No.	64O/13
	Coalfield	Ib Valley Coalfield
	Villages	-
	Tehsil/Taluka	Lakhanpur
	District	Jharsuguda
	State	Odisha
2.	Connectivity with Block	
	Nearest Rail Head	Nearest railway station is Belpahar on Jharsuguda-Belpahar-Raigarh SE railway line.
	Road	All weather metallic Jarsuguda-Raigarh road forming the eastern boundary of the block. Lakhanpur road runs along the southwestern boundary of the block.
	Airport	Nearest airport is Jharsuguda.
3.	Area	
	Geological Block Area	17.4 sq km (As per shape file, refer note below)
	Forest Area	5.92 sq. km.
	Non-Forest Area	11.48 sq. km.
4.	Climate and Topography	
	Average Annual Rainfall	Min 9.3 – Max 44.10 C
	Temperature (Min. — Max.)	Min 1086 mm –Max 2382 mm
	Local Surface Drainage Channels	The area is predominantly covered by soil and gently sloping towards Garia Nala in the south
	Rivers	Bagadia Nala (Branch of Lilari Nala) flows along south western boundary of the block. Main drainage of the area controlled by southerly flowing Ib river.
5.	Exploration	
	Status	Regionally Explored, Under Detailed Exploration
	Exploration Agency	GSI

	Total Number of Boreholes with meterage	11 Boreholes; 4156.05 m (IBK (A)-2 & 3, IBK(B)-1 to 4, IBL-1,5,9,10 & 11) 24 Boreholes; 12040 m drilled up to 31.08.2021 (Including 1 running BH) Total: 35 Boreholes; 16196.05m (As on 31.08.2021)			
	Borehole Density	Approx. 2 Boreholes per sq km (As on 31.08.2021)			
	General Dip of Seams	Towards North West			
	General Strike Direction	NE-SW			
	Faults	Block is under Exploration, Structure has not been finalized yet.			
6.	Coal Seams & Reserve				
	Coal Seams/Zones	Thickness Range (m)	Depth Range (m)	Resources (MT)	Grade
	Belpahar	5.00-10.00	30.00-100.00		F
	Parkhani	6.00-12.00			F
	Lajkura Top	30.00-35.00			E-G
	Lajkura Bot	10.00-15.00			C-G
	Rampur	30.00-40.00			E-G
	Ib	6.00-10.00	435.00-550.00		A-C
	Total			2500	
7.	Surface Constraints -				
8.	Grade of coal	G10 (Provisional) based on weighted average grade as per grade-wise data available in Regional GRs.			
9.	Decision Support System (DSS) Analysis	Wildlife info: The polygon touches Wildlife Habitat of Sloth Bear			
10.	Eco Sensitive Zone (ESZ)	SW boundary of the block is approx. 8 km from the boundary of ESZ of Debrigarh. Eastern boundary of the block is approx. 19 km from the boundary of ESZ of Sambalpur Elephant Region.			

Note:

1. Block is under exploration. Seam thickness range, depth range, resources and grades are based on regional exploration data and are tentative.
2. The block boundary is provisional and the cardinal points, bounding co-ordinates are approximate. Field DGPS survey is required to ascertain the exact area.

Disclaimer:

1. The analysis is done on Beta-version (Trial Version) of Decision Support System (DSS) of FSI/ MOEF.
2. The Decision Rules for various parameters of this DSS System are controlled by FSI.
3. CMPDI only runs this DSS to obtain the status of any block based on these Decision Rules.

4. The database of the Decision Rules is updated by FSI from time to time.
5. CMPDI does not own any responsibility for variation in the results which are based on the Decision Rules of the FSI DSS in case of any updation of the database at FSI end.
6. ESZ analysis and tiger habitat/ corridor given here is based on the information available in public domain. Bidders are encouraged to verify this information and any other information additionally available.

21°45'0"N

21°46'0"N

21°47'0"N

21°48'0"N

83°45'0"E

83°46'0"E

83°47'0"E

83°48'0"E

83°49'0"E

83°50'0"E

83°45'0"E

83°46'0"E

83°47'0"E

83°48'0"E

83°49'0"E

83°50'0"E

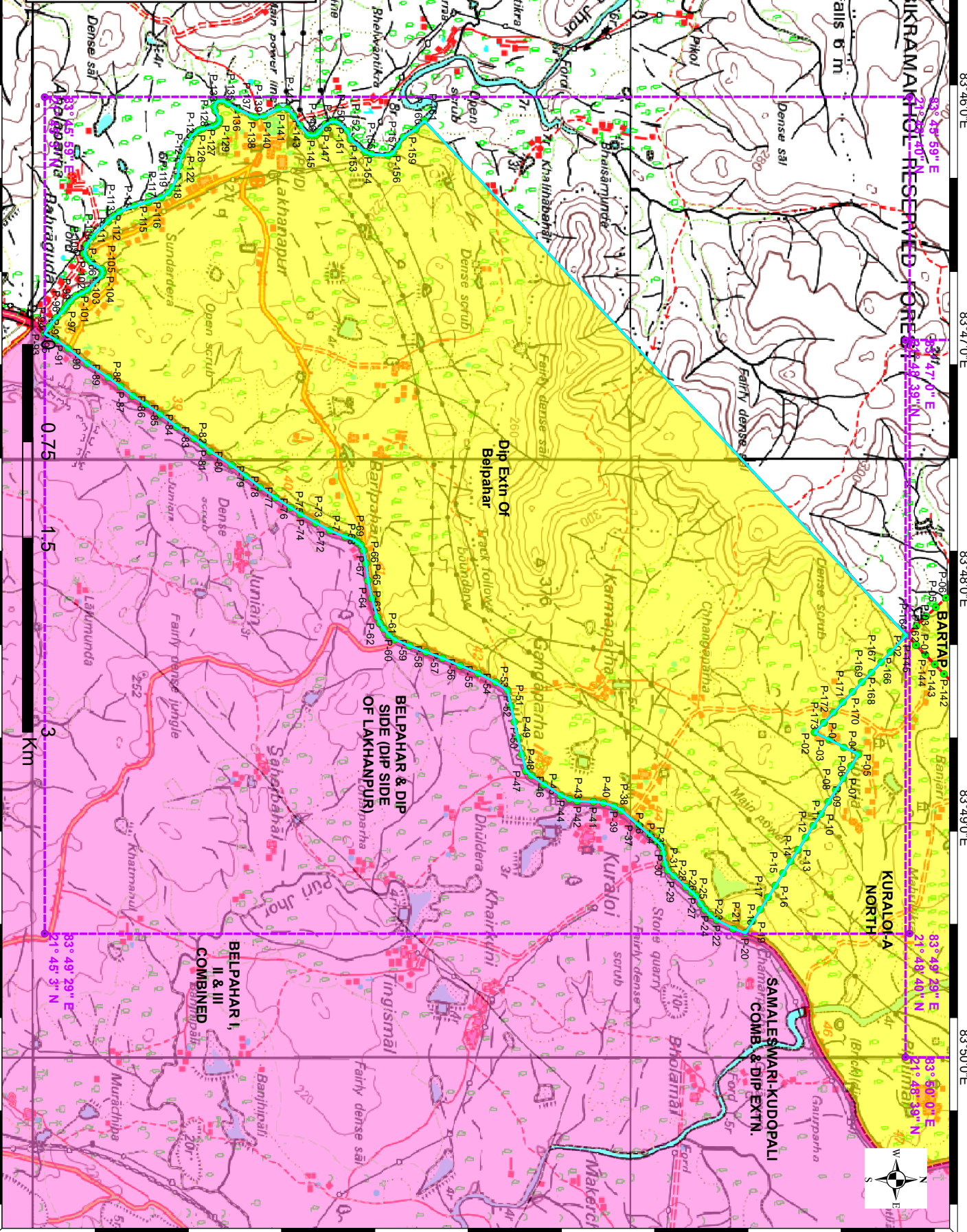
Legend

- Bounding Points
- Bounding Envelope
- Cardinal Points
- Block Boundary
- COALFIELD_BOUNDARY

OCBIS_BLOCKS

Category

- CIL
- ADDITIONAL CIL
- CMSP
- MMDR
- SCCL



Dip Extn of Belpahar Block, Ib Valley Coalfield

FOR INTERNAL/RESTRICTED USE ONLY

Provisional Cardinal Points for Dip Extn Of Belpahar Block

POINT NO	Longitude (WGS84)	Latitude (WGS84)
P-1	83° 48' 35.999" E	21° 48' 18.552" N
P-2	83° 48' 38.529" E	21° 48' 16.167" N
P-3	83° 48' 40.339" E	21° 48' 19.842" N
P-4	83° 48' 42.150" E	21° 48' 23.517" N
P-5	83° 48' 43.960" E	21° 48' 27.192" N
P-6	83° 48' 46.952" E	21° 48' 25.299" N
P-7	83° 48' 49.944" E	21° 48' 23.406" N
P-8	83° 48' 52.936" E	21° 48' 21.513" N
P-9	83° 48' 55.928" E	21° 48' 19.620" N
P-10	83° 48' 58.920" E	21° 48' 17.727" N
P-11	83° 49' 1.912" E	21° 48' 15.834" N
P-12	83° 49' 4.904" E	21° 48' 13.941" N
P-13	83° 49' 7.896" E	21° 48' 12.048" N
P-14	83° 49' 10.887" E	21° 48' 10.155" N
P-15	83° 49' 13.879" E	21° 48' 8.262" N
P-16	83° 49' 16.871" E	21° 48' 6.369" N
P-17	83° 49' 19.863" E	21° 48' 4.476" N
P-18	83° 49' 22.854" E	21° 48' 2.583" N
P-19	83° 49' 25.846" E	21° 48' 0.689" N
P-20	83° 49' 28.838" E	21° 47' 58.796" N
P-21	83° 49' 27.620" E	21° 47' 55.801" N
P-22	83° 49' 25.531" E	21° 47' 51.654" N
P-23	83° 49' 24.264" E	21° 47' 49.995" N
P-24	83° 49' 22.997" E	21° 47' 48.631" N
P-25	83° 49' 21.602" E	21° 47' 47.623" N
P-26	83° 49' 19.573" E	21° 47' 46.437" N
P-27	83° 49' 18.559" E	21° 47' 45.370" N
P-28	83° 49' 17.165" E	21° 47' 43.888" N
P-29	83° 49' 14.440" E	21° 47' 40.865" N
P-30	83° 49' 13.109" E	21° 47' 39.384" N
P-31	83° 49' 11.334" E	21° 47' 38.671" N
P-32	83° 49' 8.859" E	21° 47' 38.313" N
P-33	83° 49' 7.273" E	21° 47' 38.015" N
P-34	83° 49' 6.576" E	21° 47' 37.422" N
P-35	83° 49' 5.689" E	21° 47' 36.533" N
P-36	83° 49' 4.022" E	21° 47' 34.600" N
P-37	83° 49' 1.678" E	21° 47' 31.874" N
P-38	83° 48' 58.003" E	21° 47' 27.725" N
P-39	83° 48' 56.990" E	21° 47' 25.888" N
P-40	83° 48' 56.169" E	21° 47' 23.282" N
P-41	83° 48' 55.792" E	21° 47' 20.676" N
P-42	83° 48' 55.670" E	21° 47' 16.650" N
P-43	83° 48' 55.229" E	21° 47' 14.695" N
P-44	83° 48' 54.280" E	21° 47' 12.563" N
P-45	83° 48' 51.479" E	21° 47' 8.320" N
P-46	83° 48' 49.389" E	21° 47' 5.121" N
P-47	83° 48' 47.995" E	21° 47' 3.757" N

Provisional Cardinal Points for Dip Extn Of Belpahar Block

POINT NO	Longitude (WGS84)	Latitude (WGS84)
P-48	83° 48' 43.904" E	21° 47' 2.746" N
P-49	83° 48' 39.813" E	21° 47' 1.734" N
P-50	83° 48' 35.859" E	21° 47' 0.861" N
P-51	83° 48' 31.905" E	21° 46' 59.988" N
P-52	83° 48' 27.951" E	21° 46' 59.115" N
P-53	83° 48' 25.988" E	21° 46' 56.152" N
P-54	83° 48' 23.583" E	21° 46' 51.767" N
P-55	83° 48' 21.742" E	21° 46' 47.302" N
P-56	83° 48' 19.901" E	21° 46' 42.836" N
P-57	83° 48' 18.320" E	21° 46' 38.719" N
P-58	83° 48' 16.740" E	21° 46' 34.602" N
P-59	83° 48' 15.096" E	21° 46' 30.752" N
P-60	83° 48' 13.956" E	21° 46' 29.329" N
P-61	83° 48' 12.498" E	21° 46' 28.084" N
P-62	83° 48' 11.041" E	21° 46' 27.076" N
P-63	83° 48' 9.582" E	21° 46' 26.482" N
P-64	83° 48' 4.826" E	21° 46' 25.114" N
P-65	83° 48' 0.259" E	21° 46' 24.161" N
P-66	83° 47' 56.009" E	21° 46' 23.622" N
P-67	83° 47' 52.837" E	21° 46' 23.026" N
P-68	83° 47' 51.506" E	21° 46' 22.373" N
P-69	83° 47' 50.746" E	21° 46' 21.484" N
P-70	83° 47' 50.049" E	21° 46' 20.477" N
P-71	83° 47' 49.355" E	21° 46' 18.463" N
P-72	83° 47' 47.828" E	21° 46' 14.507" N
P-73	83° 47' 45.866" E	21° 46' 11.070" N
P-74	83° 47' 43.651" E	21° 46' 7.219" N
P-75	83° 47' 42.069" E	21° 46' 4.671" N
P-76	83° 47' 39.537" E	21° 46' 0.878" N
P-77	83° 47' 36.878" E	21° 45' 57.085" N
P-78	83° 47' 34.183" E	21° 45' 53.510" N
P-79	83° 47' 31.488" E	21° 45' 49.935" N
P-80	83° 47' 27.944" E	21° 45' 44.483" N
P-81	83° 47' 26.297" E	21° 45' 42.645" N
P-82	83° 47' 24.714" E	21° 45' 40.511" N
P-83	83° 47' 21.803" E	21° 45' 36.185" N
P-84	83° 47' 18.630" E	21° 45' 32.066" N
P-85	83° 47' 16.161" E	21° 45' 28.392" N
P-86	83° 47' 14.009" E	21° 45' 25.132" N
P-87	83° 47' 11.730" E	21° 45' 22.050" N
P-88	83° 47' 9.451" E	21° 45' 18.968" N
P-89	83° 47' 6.030" E	21° 45' 13.788" N
P-90	83° 47' 2.104" E	21° 45' 8.869" N
P-91	83° 47' 0.015" E	21° 45' 5.905" N
P-92	83° 46' 58.687" E	21° 45' 3.476" N
P-93	83° 46' 58.483" E	21° 45' 3.062" N
P-94	83° 46' 58.410" E	21° 45' 3.098" N

Provisional Cardinal Points for Dip Extn Of Belpahar Block

POINT NO	Longitude (WGS84)	Latitude (WGS84)
P-95	83° 46' 56.651" E	21° 45' 4.160" N
P-96	83° 46' 54.350" E	21° 45' 6.057" N
P-97	83° 46' 52.777" E	21° 45' 7.585" N
P-98	83° 46' 52.083" E	21° 45' 8.116" N
P-99	83° 46' 51.231" E	21° 45' 8.717" N
P-100	83° 46' 50.193" E	21° 45' 9.542" N
P-101	83° 46' 48.938" E	21° 45' 10.886" N
P-102	83° 46' 48.318" E	21° 45' 12.351" N
P-103	83° 46' 47.570" E	21° 45' 13.795" N
P-104	83° 46' 43.965" E	21° 45' 17.283" N
P-105	83° 46' 43.077" E	21° 45' 17.575" N
P-106	83° 46' 42.148" E	21° 45' 17.329" N
P-107	83° 46' 40.641" E	21° 45' 14.701" N
P-108	83° 46' 39.553" E	21° 45' 13.605" N
P-109	83° 46' 38.308" E	21° 45' 12.915" N
P-110	83° 46' 36.221" E	21° 45' 13.507" N
P-111	83° 46' 34.085" E	21° 45' 15.055" N
P-112	83° 46' 30.218" E	21° 45' 18.904" N
P-113	83° 46' 28.929" E	21° 45' 20.503" N
P-114	83° 46' 27.872" E	21° 45' 21.822" N
P-115	83° 46' 26.415" E	21° 45' 25.624" N
P-116	83° 46' 25.373" E	21° 45' 29.040" N
P-117	83° 46' 24.308" E	21° 45' 32.321" N
P-118	83° 46' 22.946" E	21° 45' 34.171" N
P-119	83° 46' 21.704" E	21° 45' 35.098" N
P-120	83° 46' 19.136" E	21° 45' 36.301" N
P-121	83° 46' 16.275" E	21° 45' 36.803" N
P-122	83° 46' 13.789" E	21° 45' 37.424" N
P-123	83° 46' 10.895" E	21° 45' 38.869" N
P-124	83° 46' 8.862" E	21° 45' 39.937" N
P-125	83° 46' 7.976" E	21° 45' 40.805" N
P-126	83° 46' 7.257" E	21° 45' 41.741" N
P-127	83° 46' 7.078" E	21° 45' 42.609" N
P-128	83° 46' 6.536" E	21° 45' 45.413" N
P-129	83° 46' 6.022" E	21° 45' 46.277" N
P-130	83° 46' 5.338" E	21° 45' 46.845" N
P-131	83° 46' 4.660" E	21° 45' 46.936" N
P-132	83° 46' 2.556" E	21° 45' 45.825" N
P-133	83° 46' 1.539" E	21° 45' 45.497" N
P-134	83° 46' 0.077" E	21° 45' 46.267" N
P-135	83° 45' 59.936" E	21° 45' 47.624" N
P-136	83° 46' 0.814" E	21° 45' 49.035" N
P-137	83° 46' 2.255" E	21° 45' 51.512" N
P-138	83° 46' 3.916" E	21° 45' 55.058" N
P-139	83° 46' 4.131" E	21° 45' 56.000" N
P-140	83° 46' 3.919" E	21° 45' 58.108" N
P-141	83° 46' 2.030" E	21° 46' 1.633" N

Provisional Cardinal Points for Dip Extn Of Belpahar Block

POINT NO	Longitude (WGS84)	Latitude (WGS84)
P-142	83° 46' 2.050" E	21° 46' 3.891" N
P-143	83° 46' 3.661" E	21° 46' 5.515" N
P-144	83° 46' 6.160" E	21° 46' 7.154" N
P-145	83° 46' 8.584" E	21° 46' 9.175" N
P-146	83° 46' 8.711" E	21° 46' 10.328" N
P-147	83° 46' 8.537" E	21° 46' 11.196" N
P-148	83° 46' 7.810" E	21° 46' 11.885" N
P-149	83° 46' 5.868" E	21° 46' 13.483" N
P-150	83° 46' 5.212" E	21° 46' 15.199" N
P-151	83° 46' 5.311" E	21° 46' 16.449" N
P-152	83° 46' 7.635" E	21° 46' 18.963" N
P-153	83° 46' 9.769" E	21° 46' 19.741" N
P-154	83° 46' 12.809" E	21° 46' 23.405" N
P-155	83° 46' 13.478" E	21° 46' 25.023" N
P-156	83° 46' 13.667" E	21° 46' 29.168" N
P-157	83° 46' 13.182" E	21° 46' 30.363" N
P-158	83° 46' 11.272" E	21° 46' 31.651" N
P-159	83° 46' 9.082" E	21° 46' 33.056" N
P-160	83° 46' 7.139" E	21° 46' 36.155" N
P-161	83° 46' 5.062" E	21° 46' 38.258" N
P-162	83° 48' 14.071" E	21° 48' 39.240" N
P-163	83° 48' 14.073" E	21° 48' 39.240" N
P-164	83° 48' 14.071" E	21° 48' 39.238" N
P-165	83° 48' 14.434" E	21° 48' 38.893" N
P-166	83° 48' 18.293" E	21° 48' 35.247" N
P-167	83° 48' 20.822" E	21° 48' 32.862" N
P-168	83° 48' 23.352" E	21° 48' 30.477" N
P-169	83° 48' 25.882" E	21° 48' 28.092" N
P-170	83° 48' 28.411" E	21° 48' 25.707" N
P-171	83° 48' 30.941" E	21° 48' 23.322" N
P-172	83° 48' 33.470" E	21° 48' 20.937" N