

DIGHI DHARAMPUR SOUTH COAL BLOCK SUMMARY

PART A

Sr. No.	Features	Details
1.	Location	
	Coal Block	DIGHI DHARAMPUR SOUTH
	Latitude	25° 7' 29" N to 25° 10' 9" N (Provisional)
	Longitude	87° 24' 59" E to 87° 29' 57" E (Provisional)
	Topo Sheet No.	G45P7 (R.F. 1:50,000)
	Coalfield	Rajmahal
	Villages	Haau Chak, Bajjani, Dumariya, Mayaramkita, Chapri, Kurpatti, Barla, Dahua Pakaria, Mitankita, Chand Chak, Bhikhankita, Gamra, Phulwaria, Diara, Ratanpur, Samda, Sadargangti, Chaujora, Pathak Chak, Bihari, Chanda, Sonawali, Hijri, Viaduct, Dhankol (Dhuakol), Rangai Chak, Harikol, Amarpur, Karma, Itwa Milik, Mandro, Pipra, Dhanbasa, Kantola, Bhuska, Bhagakol, Indar Chak, Rangila, Khanjri Chak, Mishragangti, Budhua Chak, Majhkola, Chamru Kaprigangti, Chaujora, Antadih, Sadargangti, Janghira, Mordiha, Kolbadda, Budhason (As per SOI Toposheet)
	Tehsil/Taluka	
	District	Godda
	State	Jharkhand
2.	Connectivity with Block	
	Nearest Rail Head	The Sahibganj loop line of Eastern Railway passes at about 8km from the northern part of the area and connects it with Kolkata in the south-east and Patna in the west. The nearest rail head is Pirpainti Railway Station.
	Road	The different parts of the area can be well approached by a number of fair weathered roads. Deoghar Pirpaiti Road is at about 6 kms from the western boundary of the block.
	Airport	Kazi Nazrul Islam airport (Durgapur) is situated at the distance of about 290 km in the southern direction. Birsa Munda airport (Ranchi) is situated at the distance of 300 km in the south western direction. Netaji Subhash Chandra Bose International airport (Kolkata) is situated at the distance of 390 km in the south eastern direction.
3.	Area	
	Geological Block Area	33.13 sq.km. (As per shape file. Refer Note below)
	Green Cover Area	Nil (As per FSI map)
	Area excluding green cover	33.13 sq.km. (As per FSI map)
4.	Climate and Topography	
	Average Annual Rainfall	The rainfall is mostly confined to July-August on an average of around 100cm precipitation.
	Temperature (Min. — Max.)	The area experiences a typical tropical climate with hot summer and cold winters. The summer temperature shoots upto 42°C during May-June. The winters are pleasant. The lowest temperature recorded varies from 4°C to 5°C during December-January.

	Local Surface Drainage Channels	A few seasonal nalas flow across the block.			
	Rivers	A few seasonal nalas flow across the block.			
5.	Exploration				
	Status	Unexplored			
	Exploration Agency	-			
	Total Number of Boreholes with meterage	Nil			
	Borehole Density	Nil			
	General Dip of Seams	The general dip varies from 3° to 6° easterly.			
	General Strike Direction	The general strike of the sedimentary basin is NNW-SSE			
6.	Coal Seams & Reserve				
	Coal Seams	Thickness Range with bands (m)	Depth Range (m)	Geological Reserve (MT)	Grade
	XVI	2.36	83.24	NA	NA
	XV	4.65	114.10	NA	NA
	XIV	9.58	175.95	NA	NA
	XIII	3.05	191.13	NA	NA
	XI	1.00	286.10	NA	NA
		1.60	291.20	NA	NA
	Local	1.38	295.96	NA	NA
	X	5.16	330.91	NA	NA
	IX	8.35	358.72	NA	NA
	VIII	3.00	380.07	NA	NA
	VII	2.70	400.32	NA	NA
	VI	2.20	438.05	NA	NA
	V	2.00	450.40	NA	NA
	IV	2.65	477.20	NA	NA
	III	1.90	554.45	NA	NA
	II	18.67	557.72	NA	NA
	I	10.66	599.59	NA	NA
		6.85	612.90	NA	NA
	Total			2900	
7.	Surface Constraints	Nil			
8.	Grade of coal	G11 (Provisional)			
9.	Decision Support System (DSS) Analysis	-			
10.	Eco Sensitive Zone (ESZ)	The nearest ESZ is Udwa lake 31.10 kms S-E of the block boundary.			

Note:

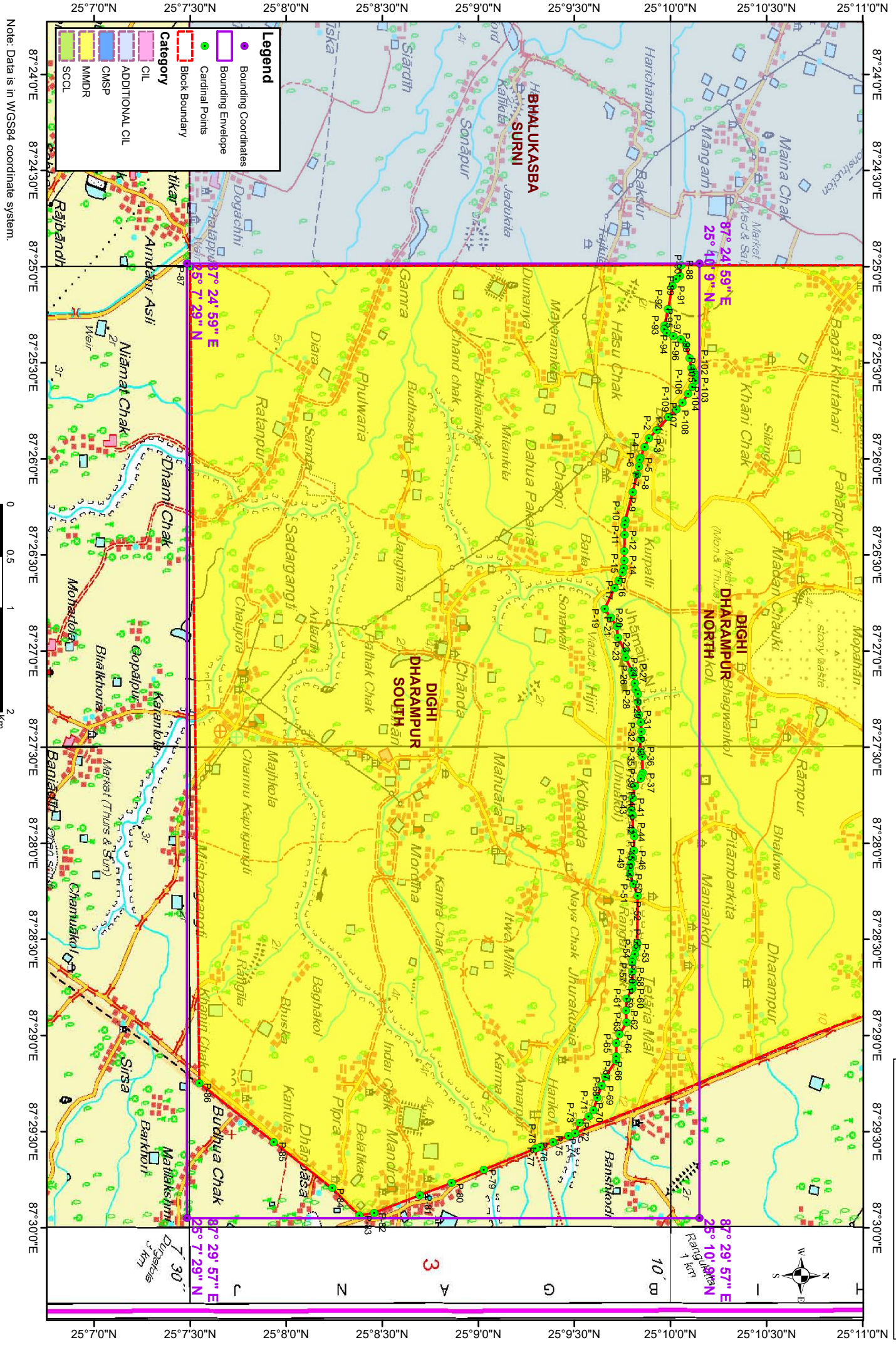
1. Since, no boreholes have been drilled within the block boundary of the block by any agency, the Weighted Average Grade of the block has been assessed from the information as per RGR titled '*Final Report On Exploration For Gondwana Coal Under The Cover Of Younger Formations In Rajgaon Block, Within Mirjagaon Area In The Northern Extension Of Rajmahal Coalfields, Bhagalpur District, Bihar*', April 2017 by GSI and is highly tentative.
2. Geological Information of the block is based on RGR titled '*Final Report on Regional Exploration for Coal in the Northern Extension of Rajmahal Coalfields, Santhal Pargana Division And Bhagalpur District, Bihar*', May 1985 by GSI and seamwise details are based on a single borehole i.e. RJNE-21, falling outside the western boundary of the block. Information on faults and possible depth of intersection of coal seams in the block are not available.
3. The block boundary is provisional and the cardinal points, bounding co-ordinates are approximate. Field DGPS survey is required to ascertain the exact area.

Disclaimer:

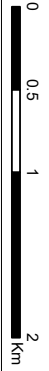
1. The analysis is done on Beta-version (Trial Version) of Decision Support System (DSS) of FSI / MOEF.
2. The Decision Rules for various parameters of this DSS System are controlled by FSI.
3. CMPDI only runs this DSS to obtain the status of any block based on these Decision Rules.
4. The database of the Decision Rules is updated by FSI from time to time.
5. CMPDI does not own any responsibility for variation in the results which are based on the Decision Rules of the FSI DSS in case of any updation of the database at FSI end.
6. ESZ analysis and tiger habitat/ corridor given here is based on the information available in public domain. Bidders are encouraged to verify this information and any other information additionally available.

Dighi Dharampur South Block, Rajmahal Coalfield

FOR INTERNAL/RESTRICTED USE ONLY



Note: Data is in WGS84 coordinate system.



Legend

- Bounding Coordinates
- Bounding Envelope
- Cardinal Points
- Block Boundary

Category

- ADDITIONAL CIL
- CIL
- CMSP
- MMDR
- SCCL

87° 24' 59" E
25° 7' 29" N

87° 24' 59" E
25° 40' 9" N

87° 29' 57" E
25° 10' 9" N

87° 29' 57" E
25° 7' 29" N

10 km

3

10 km

7.30 km

Durgadei 3 km

Provisional Cardinal Points for DIGHI DHARAMPUR SOUTH Block

POINT NO	Longitude (WGS84)	Latitude (WGS84)
P-1	87° 25' 46.985" E	25° 9' 59.363" N
P-2	87° 25' 50.989" E	25° 9' 55.653" N
P-3	87° 25' 53.580" E	25° 9' 53.258" N
P-4	87° 25' 56.222" E	25° 9' 51.939" N
P-5	87° 25' 59.643" E	25° 9' 50.595" N
P-6	87° 26' 0.327" E	25° 9' 50.314" N
P-7	87° 26' 2.382" E	25° 9' 50.114" N
P-8	87° 26' 4.999" E	25° 9' 49.539" N
P-9	87° 26' 10.335" E	25° 9' 48.190" N
P-10	87° 26' 19.234" E	25° 9' 45.863" N
P-11	87° 26' 20.675" E	25° 9' 45.600" N
P-12	87° 26' 23.817" E	25° 9' 45.591" N
P-13	87° 26' 28.732" E	25° 9' 45.576" N
P-14	87° 26' 31.733" E	25° 9' 45.567" N
P-15	87° 26' 34.078" E	25° 9' 45.336" N
P-16	87° 26' 35.353" E	25° 9' 44.971" N
P-17	87° 26' 37.915" E	25° 9' 43.750" N
P-18	87° 26' 40.349" E	25° 9' 42.504" N
P-19	87° 26' 46.826" E	25° 9' 39.440" N
P-20	87° 26' 49.611" E	25° 9' 41.367" N
P-21	87° 26' 52.284" E	25° 9' 43.243" N
P-22	87° 26' 55.816" E	25° 9' 43.595" N
P-23	87° 27' 0.049" E	25° 9' 45.801" N
P-24	87° 27' 2.034" E	25° 9' 45.950" N
P-25	87° 27' 6.068" E	25° 9' 47.873" N
P-26	87° 27' 7.459" E	25° 9' 48.308" N
P-27	87° 27' 9.986" E	25° 9' 48.783" N
P-28	87° 27' 11.925" E	25° 9' 49.100" N
P-29	87° 27' 13.345" E	25° 9' 49.762" N
P-30	87° 27' 15.897" E	25° 9' 49.754" N
P-31	87° 27' 19.939" E	25° 9' 50.172" N
P-32	87° 27' 22.114" E	25° 9' 50.660" N
P-33	87° 27' 25.069" E	25° 9' 50.909" N
P-34	87° 27' 27.549" E	25° 9' 50.578" N
P-35	87° 27' 31.306" E	25° 9' 50.588" N
P-36	87° 27' 32.938" E	25° 9' 51.164" N
P-37	87° 27' 38.069" E	25° 9' 51.265" N
P-38	87° 27' 38.848" E	25° 9' 50.962" N
P-39	87° 27' 39.792" E	25° 9' 50.658" N
P-40	87° 27' 42.219" E	25° 9' 48.887" N
P-41	87° 27' 45.902" E	25° 9' 48.123" N
P-42	87° 27' 49.469" E	25° 9' 47.746" N
P-43	87° 27' 51.115" E	25° 9' 48.068" N
P-44	87° 27' 56.532" E	25° 9' 48.309" N
P-45	87° 27' 57.724" E	25° 9' 48.640" N
P-46	87° 28' 2.232" E	25° 9' 48.549" N
P-47	87° 28' 4.541" E	25° 9' 48.077" N

Provisional Cardinal Points for DIGHI DHARAMPUR SOUTH Block

P-48	87° 28' 6.411" E	25° 9' 47.594" N
P-49	87° 28' 7.856" E	25° 9' 47.266" N
P-50	87° 28' 9.543" E	25° 9' 47.339" N
P-51	87° 28' 12.587" E	25° 9' 48.362" N
P-52	87° 28' 16.436" E	25° 9' 49.726" N
P-53	87° 28' 31.241" E	25° 9' 49.586" N
P-54	87° 28' 32.884" E	25° 9' 49.168" N
P-55	87° 28' 34.565" E	25° 9' 48.801" N
P-56	87° 28' 35.980" E	25° 9' 48.194" N
P-57	87° 28' 37.265" E	25° 9' 48.001" N
P-58	87° 28' 40.175" E	25° 9' 47.974" N
P-59	87° 28' 43.617" E	25° 9' 48.256" N
P-60	87° 28' 45.393" E	25° 9' 48.026" N
P-61	87° 28' 48.431" E	25° 9' 46.253" N
P-62	87° 28' 52.229" E	25° 9' 46.073" N
P-63	87° 28' 55.841" E	25° 9' 46.246" N
P-64	87° 28' 59.660" E	25° 9' 44.066" N
P-65	87° 29' 2.378" E	25° 9' 43.051" N
P-66	87° 29' 6.461" E	25° 9' 43.089" N
P-67	87° 29' 7.821" E	25° 9' 42.930" N
P-68	87° 29' 12.944" E	25° 9' 39.633" N
P-69	87° 29' 15.538" E	25° 9' 38.442" N
P-70	87° 29' 19.384" E	25° 9' 37.096" N
P-71	87° 29' 23.349" E	25° 9' 35.878" N
P-72	87° 29' 25.257" E	25° 9' 34.410" N
P-73	87° 29' 27.207" E	25° 9' 31.608" N
P-74	87° 29' 30.467" E	25° 9' 30.236" N
P-75	87° 29' 31.318" E	25° 9' 28.091" N
P-76	87° 29' 33.209" E	25° 9' 23.323" N
P-77	87° 29' 34.787" E	25° 9' 19.198" N
P-78	87° 29' 35.326" E	25° 9' 17.783" N
P-79	87° 29' 41.833" E	25° 9' 1.726" N
P-80	87° 29' 46.013" E	25° 8' 51.579" N
P-81	87° 29' 49.836" E	25° 8' 41.698" N
P-82	87° 29' 55.327" E	25° 8' 27.433" N
P-83	87° 29' 56.099" E	25° 8' 22.857" N
P-84	87° 29' 47.629" E	25° 8' 14.311" N
P-85	87° 29' 33.215" E	25° 7' 56.124" N
P-86	87° 29' 14.826" E	25° 7' 32.877" N
P-87	87° 24' 59.884" E	25° 7' 29.972" N
P-88	87° 24' 59.530" E	25° 10' 3.325" N
P-89	87° 25' 2.901" E	25° 10' 2.911" N
P-90	87° 25' 4.031" E	25° 10' 1.617" N
P-91	87° 25' 6.060" E	25° 10' 0.622" N
P-92	87° 25' 13.386" E	25° 9' 59.174" N
P-93	87° 25' 18.297" E	25° 9' 58.093" N
P-94	87° 25' 19.582" E	25° 9' 58.021" N
P-95	87° 25' 20.719" E	25° 9' 58.843" N

Provisional Cardinal Points for DIGHI DHARAMPUR SOUTH Block

P-96	87° 25' 21.596" E	25° 10' 0.836" N
P-97	87° 25' 22.738" E	25° 10' 3.138" N
P-98	87° 25' 24.521" E	25° 10' 4.819" N
P-99	87° 25' 28.570" E	25° 10' 5.943" N
P-100	87° 25' 31.634" E	25° 10' 6.485" N
P-101	87° 25' 32.809" E	25° 10' 7.238" N
P-102	87° 25' 33.719" E	25° 10' 7.992" N
P-103	87° 25' 34.658" E	25° 10' 8.058" N
P-104	87° 25' 35.647" E	25° 10' 7.884" N
P-105	87° 25' 37.685" E	25° 10' 6.777" N
P-106	87° 25' 39.759" E	25° 10' 5.463" N
P-107	87° 25' 42.438" E	25° 10' 3.666" N
P-108	87° 25' 44.662" E	25° 10' 1.871" N

Note: The provisional cardinal points are in WGS84 coordinate system. These points are extracted through ArcGIS software after georeferencing of block boundary and onground DGPS survey is required to ascertain the exact location of the points.