

DIGHI DHARAMPUR NORTH COAL BLOCK SUMMARY

PART A

Sr. No.	Features	Details
1. Location		
	Coal Block	DIGHI DHARAMPUR NORTH
	Latitude	25° 9' 30" N to 25° 12' 55" N (Provisional)
	Longitude	87° 24' 59" E to 87° 29' 31" E (Provisional)
	Topo Sheet No.	G45P7 (R.F. 1:50,000)
	Coalfield	Rajmahal
	Villages	Kumardam, Dighi, Mohammad Khutahan, Siwanpur, Kakarghar, Jhakramal, Jangal Chauki, Pokhriya, Chandpur, Bagat Khutahan, Khani Chak, Sitang, Baijan, Paharpur, Madan Chauki, Dhankol, Rampur, Mopahan, Jiban Khutahan, Manikpur, Rhatuwa, Dharampur, Tetaria Mal, Maniankol, Pitambarkita, Khandar, Talbana, Bhagaiya, Bhaluwa, Kurpatti, Matram Chak, Deban Chak, Bhalua (As per SOI Toposheet)
	Tehsil/Taluka	
	District	Godda
	State	Jharkhand
2. Connectivity with Block		
	Nearest Rail Head	The Sahibganj loop line of Eastern Railway passes at about 8km from the northern part of the area and connects it with Kolkata in the south-east and Patna in the west. The nearest rail head is Pirpainti Railway Station.
	Road	The different parts of the area can be well approached by a number of fair weathered roads. Deoghar Pirpaiti Road is at about 6 kms from the western boundary of the block.
	Airport	Kazi Nazrul Islam airport (Durgapur) is situated at the distance of about 290 km in the southern direction. Birsa Munda airport (Ranchi) is situated at the distance of 300 km in the south western direction. Netaji Subhash Chandra Bose International airport (Kolkata) is situated at the distance of 390 km in the south eastern direction.
3. Area		
	Geological Block Area	28.74 sq.km. (As per shape file. Refer Note below)
	Green cover Area	Nil (As per FSI map)
	Area excluding green cover	28.74 sq.km. (As per FSI map)
4. Climate and Topography		
	Average Annual Rainfall	The rainfall is mostly confined to July-August on an average of around 100cm precipitation.
	Temperature (Min. — Max.)	The area experiences a typical tropical climate with hot summer and cold winters. The summer temperature shoots upto 42°C during May-June. The winters are pleasant. The lowest temperature recorded varies from 4°C to 5°C during December-January.
	Local Surface Drainage Channels	-
	Rivers	-

5.	Exploration				
	Status	Unexplored			
	Exploration Agency	-			
	Total Number of Boreholes with meterage	Nil			
	Borehole Density	Nil			
	General Dip of Seams	The general dip varies from 3° to 6° easterly.			
	General Strike Direction	The general strike of the sedimentary basin is NNW-SSE although, there is NE-SW swing of the strike in the northern part.			
6.	Coal Seams & Reserve				
	Coal Seams	Thickness Range with bands (m)	Depth Range (m)	Geological Reserve (MT)	Grade
	XVI	1.25	130.12	NA	NA
	XV	3.62	173.02	NA	NA
	XIV	9.00	228.40	NA	NA
		2.87	248.98	NA	NA
		0.54	268.56	NA	NA
	XIII	1.34	275.78	NA	NA
		0.72	353.42	NA	NA
	XII(T)	0.97	358.47	NA	NA
	XII(B)	2.44	366.88	NA	NA
	XI	3.66	387.69	NA	NA
		2.28	402.67	NA	NA
	X	4.88	416.30	NA	NA
	IX	1.89	430.28	NA	NA
	VIII	2.80	450.32	NA	NA
	VI	0.63	476.17	NA	NA
	V	1.23	499.50	NA	NA
	IV	1.82	551.79	NA	NA
	Total			4100	
7.	Surface Constraints	-			
8.	Grade of coal	G11 (Provisional)			
9.	Decision Support System (DSS) Analysis	-			
10.	Eco Sensitive Zone (ESZ)	The nearest ESZ is Udwalake 33.50 kms S-E of the block boundary.			

Note:

1. Since, no boreholes have been drilled within the block boundary of the block by any agency, the Weighted Average Grade of the block has been assessed from the information as per RGR titled '*Final Report On Exploration For Gondwana Coal Under The Cover Of Younger Formations In Rajgaon Block, Within Mirjagaon Area In The Northern Extension Of Rajmahal Coalfields, Bhagalpur District, Bihar*', April 2017 by GSI and is highly tentative.
2. Geological Information of the block is based on RGR titled '*Final Report on Regional Exploration for Coal in the Northern Extension of Rajmahal Coalfields, Santhal Pargana*

Division And Bhagalpur District, Bihar, May1985 by GSI and seamwise details are based on a single borehole i.e. RJNE-01, falling outside the northern boundary of the block. Information on faults and possible depth of intersection of coal seams in the block are not available.

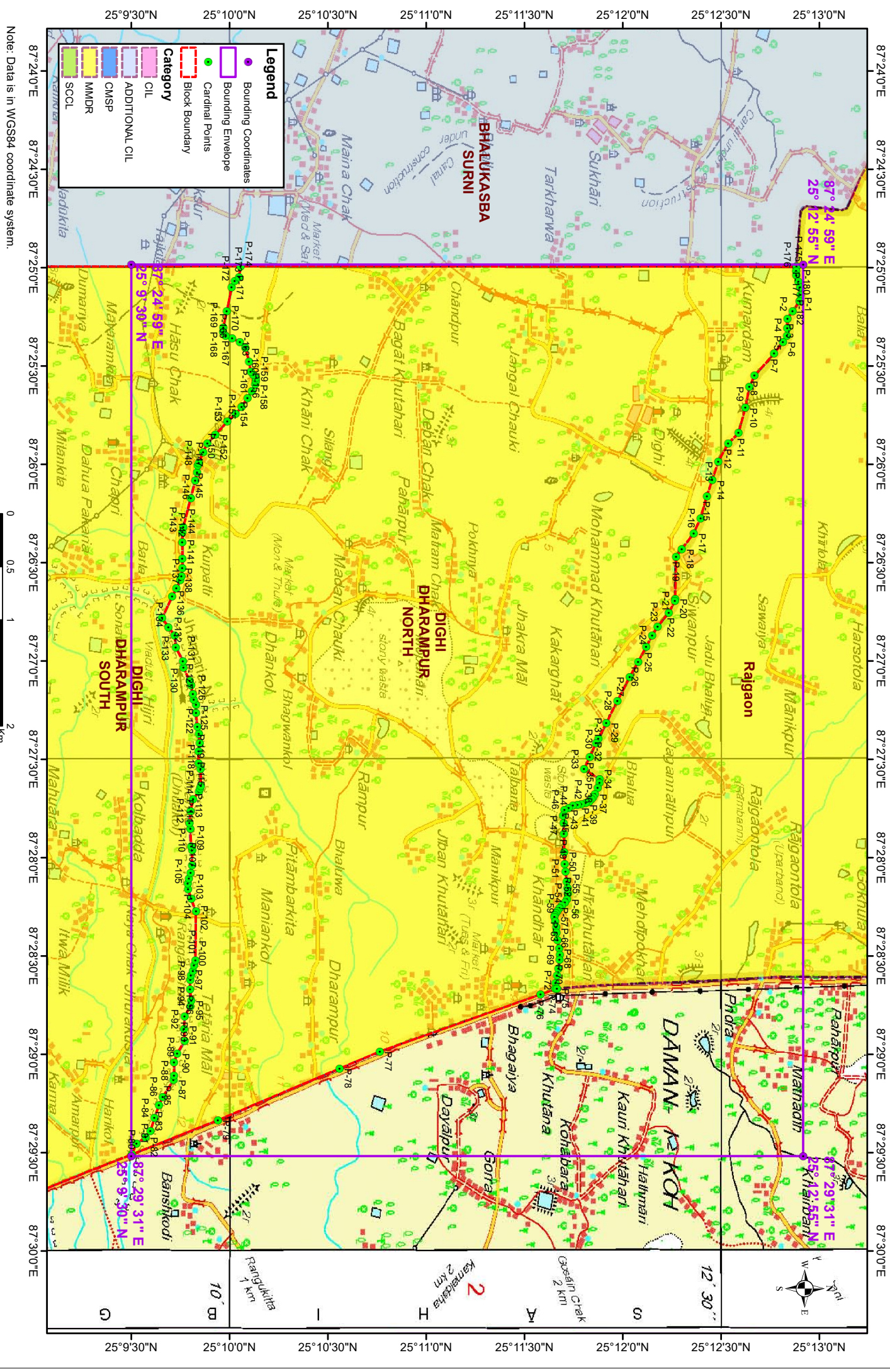
3. Borehole no. RJNE-01 is drilled upto Seam-IV, it is likely that lower seams i.e. from Seam-III to Seam-I will be encountered in the block.
4. The block boundary is provisional and the cardinal points, bounding co-ordinates are approximate. Field DGPS survey is required to ascertain the exact area.

Disclaimer:

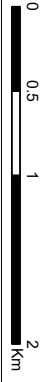
1. The analysis is done on Beta-version (Trial Version) of Decision Support System (DSS) of FSI / MOEF.
2. The Decision Rules for various parameters of this DSS System are controlled by FSI.
3. CMPDI only runs this DSS to obtain the status of any block based on these Decision Rules.
4. The database of the Decision Rules is updated by FSI from time to time.
5. CMPDI does not own any responsibility for variation in the results which are based on the Decision Rules of the FSI DSS in case of any updation of the database at FSI end.
6. ESZ analysis and tiger habitat/ corridor given here is based on the information available in public domain. Bidders are encouraged to verify this information and any other information additionally available.

Dighi Dharampur North Block, Rajmahal Coalfield

FOR INTERNAL/RESTRICTED USE ONLY



Note: Data is in WGS84 coordinate system.



25°9'30"N 25°10'0"N 25°10'30"N 25°11'0"N 25°11'30"N 25°12'0"N 25°12'30"N 25°13'0"N

87°24'0"E 87°24'30"E 87°25'0"E 87°25'30"E 87°26'0"E 87°26'30"E 87°27'0"E 87°27'30"E 87°28'0"E 87°28'30"E 87°29'0"E 87°29'30"E 87°30'0"E

87°24'0"E 87°24'30"E 87°25'0"E 87°25'30"E 87°26'0"E 87°26'30"E 87°27'0"E 87°27'30"E 87°28'0"E 87°28'30"E 87°29'0"E 87°29'30"E 87°30'0"E

10' 12' 30"

25°9'30"N 25°10'0"N 25°10'30"N 25°11'0"N 25°11'30"N 25°12'0"N 25°12'30"N 25°13'0"N

Provisional Cardinal Points for DIGHI DHARAMPUR NORTH Block

POINT NO	Longitude (WGS84)	Latitude (WGS84)
P-1	87° 25' 10.166" E	25° 12' 54.018" N
P-2	87° 25' 13.284" E	25° 12' 51.826" N
P-3	87° 25' 15.545" E	25° 12' 50.249" N
P-4	87° 25' 18.560" E	25° 12' 50.147" N
P-5	87° 25' 20.650" E	25° 12' 50.112" N
P-6	87° 25' 22.672" E	25° 12' 48.913" N
P-7	87° 25' 26.167" E	25° 12' 46.206" N
P-8	87° 25' 32.977" E	25° 12' 40.175" N
P-9	87° 25' 36.215" E	25° 12' 38.633" N
P-10	87° 25' 42.794" E	25° 12' 37.399" N
P-11	87° 25' 50.400" E	25° 12' 35.343" N
P-12	87° 25' 53.638" E	25° 12' 32.157" N
P-13	87° 25' 59.189" E	25° 12' 29.124" N
P-14	87° 26' 4.817" E	25° 12' 27.274" N
P-15	87° 26' 9.742" E	25° 12' 25.647" N
P-16	87° 26' 16.381" E	25° 12' 23.719" N
P-17	87° 26' 21.007" E	25° 12' 21.621" N
P-18	87° 26' 25.932" E	25° 12' 17.980" N
P-19	87° 26' 28.160" E	25° 12' 16.310" N
P-20	87° 26' 40.995" E	25° 12' 16.031" N
P-21	87° 26' 41.766" E	25° 12' 15.877" N
P-22	87° 26' 45.210" E	25° 12' 13.975" N
P-23	87° 26' 49.527" E	25° 12' 10.583" N
P-24	87° 26' 52.199" E	25° 12' 8.939" N
P-25	87° 26' 55.721" E	25° 12' 7.101" N
P-26	87° 27' 0.227" E	25° 12' 4.684" N
P-27	87° 27' 4.879" E	25° 12' 2.063" N
P-28	87° 27' 12.168" E	25° 11' 58.379" N
P-29	87° 27' 18.884" E	25° 11' 54.953" N
P-30	87° 27' 23.698" E	25° 11' 52.520" N
P-31	87° 27' 24.998" E	25° 11' 51.801" N
P-32	87° 27' 29.202" E	25° 11' 49.925" N
P-33	87° 27' 32.971" E	25° 11' 48.212" N
P-34	87° 27' 36.055" E	25° 11' 52.924" N
P-35	87° 27' 37.087" E	25° 11' 52.857" N
P-36	87° 27' 38.783" E	25° 11' 52.317" N
P-37	87° 27' 40.582" E	25° 11' 51.469" N
P-38	87° 27' 41.533" E	25° 11' 50.981" N
P-39	87° 27' 42.252" E	25° 11' 50.415" N
P-40	87° 27' 42.843" E	25° 11' 49.722" N
P-41	87° 27' 43.280" E	25° 11' 48.719" N
P-42	87° 27' 43.691" E	25° 11' 47.332" N
P-43	87° 27' 43.794" E	25° 11' 46.175" N
P-44	87° 27' 44.128" E	25° 11' 44.762" N
P-45	87° 27' 44.771" E	25° 11' 43.451" N
P-46	87° 27' 45.336" E	25° 11' 42.218" N
P-47	87° 27' 47.109" E	25° 11' 41.729" N

Provisional Cardinal Points for DIGHI DHARAMPUR NORTH Block

P-48	87° 27' 49.499" E	25° 11' 41.909" N
P-49	87° 27' 52.737" E	25° 11' 41.986" N
P-50	87° 27' 58.211" E	25° 11' 42.141" N
P-51	87° 28' 1.886" E	25° 11' 42.295" N
P-52	87° 28' 4.276" E	25° 11' 42.500" N
P-53	87° 28' 7.265" E	25° 11' 42.864" N
P-54	87° 28' 9.257" E	25° 11' 43.121" N
P-55	87° 28' 11.056" E	25° 11' 43.207" N
P-56	87° 28' 12.662" E	25° 11' 42.972" N
P-57	87° 28' 13.647" E	25° 11' 42.351" N
P-58	87° 28' 14.546" E	25° 11' 41.430" N
P-59	87° 28' 15.360" E	25° 11' 40.744" N
P-60	87° 28' 16.367" E	25° 11' 40.016" N
P-61	87° 28' 16.816" E	25° 11' 39.567" N
P-62	87° 28' 17.502" E	25° 11' 39.267" N
P-63	87° 28' 17.994" E	25° 11' 39.181" N
P-64	87° 28' 19.365" E	25° 11' 39.417" N
P-65	87° 28' 21.099" E	25° 11' 39.674" N
P-66	87° 28' 22.963" E	25° 11' 39.716" N
P-67	87° 28' 25.147" E	25° 11' 40.102" N
P-68	87° 28' 27.695" E	25° 11' 40.594" N
P-69	87° 28' 29.623" E	25° 11' 40.787" N
P-70	87° 28' 31.122" E	25° 11' 40.680" N
P-71	87° 28' 33.863" E	25° 11' 40.337" N
P-72	87° 28' 35.897" E	25° 11' 39.888" N
P-73	87° 28' 38.124" E	25° 11' 39.459" N
P-74	87° 28' 39.988" E	25° 11' 39.438" N
P-75	87° 28' 39.940" E	25° 11' 39.901" N
P-76	87° 28' 41.734" E	25° 11' 34.842" N
P-77	87° 28' 59.087" E	25° 10' 45.877" N
P-78	87° 29' 4.281" E	25° 10' 33.561" N
P-79	87° 29' 20.076" E	25° 9' 56.430" N
P-80	87° 29' 30.467" E	25° 9' 30.236" N
P-81	87° 29' 27.207" E	25° 9' 31.608" N
P-82	87° 29' 25.257" E	25° 9' 34.410" N
P-83	87° 29' 23.349" E	25° 9' 35.878" N
P-84	87° 29' 19.384" E	25° 9' 37.096" N
P-85	87° 29' 15.538" E	25° 9' 38.442" N
P-86	87° 29' 12.944" E	25° 9' 39.633" N
P-87	87° 29' 7.821" E	25° 9' 42.930" N
P-88	87° 29' 6.461" E	25° 9' 43.089" N
P-89	87° 29' 2.378" E	25° 9' 43.051" N
P-90	87° 28' 59.660" E	25° 9' 44.066" N
P-91	87° 28' 55.841" E	25° 9' 46.246" N
P-92	87° 28' 52.229" E	25° 9' 46.073" N
P-93	87° 28' 48.431" E	25° 9' 46.253" N
P-94	87° 28' 45.393" E	25° 9' 48.026" N
P-95	87° 28' 43.617" E	25° 9' 48.256" N

Provisional Cardinal Points for DIGHI DHARAMPUR NORTH Block

P-96	87° 28' 40.175" E	25° 9' 47.974" N
P-97	87° 28' 37.265" E	25° 9' 48.001" N
P-98	87° 28' 35.980" E	25° 9' 48.194" N
P-99	87° 28' 34.565" E	25° 9' 48.801" N
P-100	87° 28' 32.884" E	25° 9' 49.168" N
P-101	87° 28' 31.241" E	25° 9' 49.586" N
P-102	87° 28' 16.436" E	25° 9' 49.726" N
P-103	87° 28' 12.587" E	25° 9' 48.362" N
P-104	87° 28' 9.543" E	25° 9' 47.339" N
P-105	87° 28' 7.856" E	25° 9' 47.266" N
P-106	87° 28' 6.411" E	25° 9' 47.594" N
P-107	87° 28' 4.541" E	25° 9' 48.077" N
P-108	87° 28' 2.232" E	25° 9' 48.549" N
P-109	87° 27' 57.724" E	25° 9' 48.640" N
P-110	87° 27' 56.532" E	25° 9' 48.309" N
P-111	87° 27' 51.115" E	25° 9' 48.068" N
P-112	87° 27' 49.469" E	25° 9' 47.746" N
P-113	87° 27' 45.902" E	25° 9' 48.123" N
P-114	87° 27' 42.219" E	25° 9' 48.887" N
P-115	87° 27' 39.792" E	25° 9' 50.658" N
P-116	87° 27' 38.848" E	25° 9' 50.962" N
P-117	87° 27' 38.069" E	25° 9' 51.265" N
P-118	87° 27' 32.938" E	25° 9' 51.164" N
P-119	87° 27' 31.306" E	25° 9' 50.588" N
P-120	87° 27' 27.549" E	25° 9' 50.578" N
P-121	87° 27' 25.069" E	25° 9' 50.909" N
P-122	87° 27' 22.114" E	25° 9' 50.660" N
P-123	87° 27' 19.939" E	25° 9' 50.172" N
P-124	87° 27' 15.897" E	25° 9' 49.754" N
P-125	87° 27' 13.345" E	25° 9' 49.762" N
P-126	87° 27' 11.925" E	25° 9' 49.100" N
P-127	87° 27' 9.986" E	25° 9' 48.783" N
P-128	87° 27' 7.459" E	25° 9' 48.308" N
P-129	87° 27' 6.068" E	25° 9' 47.873" N
P-130	87° 27' 2.034" E	25° 9' 45.950" N
P-131	87° 27' 0.049" E	25° 9' 45.801" N
P-132	87° 26' 55.816" E	25° 9' 43.595" N
P-133	87° 26' 52.284" E	25° 9' 43.243" N
P-134	87° 26' 49.611" E	25° 9' 41.367" N
P-135	87° 26' 46.826" E	25° 9' 39.440" N
P-136	87° 26' 40.349" E	25° 9' 42.504" N
P-137	87° 26' 37.915" E	25° 9' 43.750" N
P-138	87° 26' 35.353" E	25° 9' 44.971" N
P-139	87° 26' 34.078" E	25° 9' 45.336" N
P-140	87° 26' 31.733" E	25° 9' 45.567" N
P-141	87° 26' 28.732" E	25° 9' 45.576" N
P-142	87° 26' 23.817" E	25° 9' 45.591" N
P-143	87° 26' 20.675" E	25° 9' 45.600" N

Provisional Cardinal Points for DIGHI DHARAMPUR NORTH Block

P-144	87° 26' 19.234" E	25° 9' 45.863" N
P-145	87° 26' 10.335" E	25° 9' 48.190" N
P-146	87° 26' 4.999" E	25° 9' 49.539" N
P-147	87° 26' 2.382" E	25° 9' 50.114" N
P-148	87° 26' 0.327" E	25° 9' 50.314" N
P-149	87° 25' 59.643" E	25° 9' 50.595" N
P-150	87° 25' 56.222" E	25° 9' 51.939" N
P-151	87° 25' 53.580" E	25° 9' 53.258" N
P-152	87° 25' 50.989" E	25° 9' 55.653" N
P-153	87° 25' 46.985" E	25° 9' 59.363" N
P-154	87° 25' 44.662" E	25° 10' 1.871" N
P-155	87° 25' 42.438" E	25° 10' 3.666" N
P-156	87° 25' 39.759" E	25° 10' 5.463" N
P-157	87° 25' 37.685" E	25° 10' 6.777" N
P-158	87° 25' 35.647" E	25° 10' 7.884" N
P-159	87° 25' 34.658" E	25° 10' 8.058" N
P-160	87° 25' 33.719" E	25° 10' 7.992" N
P-161	87° 25' 32.809" E	25° 10' 7.238" N
P-162	87° 25' 31.634" E	25° 10' 6.485" N
P-163	87° 25' 28.570" E	25° 10' 5.943" N
P-164	87° 25' 24.521" E	25° 10' 4.819" N
P-165	87° 25' 22.738" E	25° 10' 3.138" N
P-166	87° 25' 21.596" E	25° 10' 0.836" N
P-167	87° 25' 20.719" E	25° 9' 58.843" N
P-168	87° 25' 19.582" E	25° 9' 58.021" N
P-169	87° 25' 18.297" E	25° 9' 58.093" N
P-170	87° 25' 13.386" E	25° 9' 59.174" N
P-171	87° 25' 6.060" E	25° 10' 0.622" N
P-172	87° 25' 4.031" E	25° 10' 1.617" N
P-173	87° 25' 2.901" E	25° 10' 2.911" N
P-174	87° 24' 59.530" E	25° 10' 3.325" N
P-175	87° 24' 59.706" E	25° 12' 53.000" N
P-176	87° 24' 59.706" E	25° 12' 53.000" N
P-177	87° 24' 59.706" E	25° 12' 53.000" N
P-178	87° 25' 0.983" E	25° 12' 52.853" N
P-179	87° 25' 2.319" E	25° 12' 52.922" N
P-180	87° 25' 4.341" E	25° 12' 53.539" N
P-181	87° 25' 6.088" E	25° 12' 54.053" N
P-182	87° 25' 8.247" E	25° 12' 54.224" N

Note: The provisional cardinal points are in WGS84 coordinate system. These points are extracted through ArcGIS software after georeferencing of block boundary and onground DGPS survey is required to ascertain the exact location of the points.