

**DHULIA NORTH COAL BLOCK SUMMARY  
PART A**

Sr. No.	Features	Details
<b>1.</b>	<b>Location</b>	
	Coal Block	DHULIA NORTH
	Latitude	25° 10' 3" N-25° 13' 26" N (Provisional)
	Longitude	87° 19' 6" E-87° 22' 14" E (Provisional)
	Topo Sheet No.	72O/8
	Coalfield	Rajmahal Coalfield
	Villages	Budhason, Bajitpur, Singhari, Kolbadda, Paharkhand, Hulukpur, Sirsingh Kita, SudinSiwanpur
	Tehsil/Taluka	Meherma
	District	Godda
	State	Jharkhand
<b>2.</b>	<b>Connectivity with Block</b>	
	Nearest Rail Head	The Block is situated at a distance of about 10.6 km in the southern direction from the nearest Pirpainti railway station
	Road	Deoghar Pirpainti Road
	Airport	Kazi Nazrul Islam airport (Andal), is situated at the distance of 173 km in the southern direction. Birsa Munda airport, is situated at the distance of 289 km in the south western direction.
<b>3.</b>	<b>Area</b>	
	Geological Block Area	18.08 sq km (As per shape file, Refer note below)
	Forest Area	NIL
	Non-Forest Area	18.08 sqkm
<b>4.</b>	<b>Climate and Topography</b>	
	Average Annual Rainfall	1500 mm
	Temperature (Min. — Max.)	Average temperature ranges between 15° to 25° C but during summer hot condition develop and temperature rise up to 43° C.
	Local Surface Drainage Channels	The area is a vast alluvial plain. General elevation of the alluvial plain ranges from 30m to 60m above M.S.L. Dhulia Nala is the southern boundary of the block and divides Dhulia North and Dhulia South. Lohra and Koa nala flows from SE to NW draining the central part of the area.
	Rivers	The river Ganga, flowing eastwards, lies at a distance of 10km in North-west from the block boundary.

<b>5.</b>	<b>Exploration</b>				
	Status	EXPLORED			
	Exploration Agency	CMPDIL, GSI, MAPL			
	Total Number of Boreholes with meterage	TOTAL BOREHOLE: 140, METERAGE: 34061.61 m			
	Borehole Density	8.08 bh/Sq Km.			
	General Dip of Seams	2° to 5° towards East to South-east.			
	General Strike Direction	NNE-SSW to NE-SW			
	Faults	The block is traversed by a total 7 number of faults, designated as F1-F1 to F7-F7. The general trends of the faults are NW-SE with some deviations except F2-F2, F3-F3 & F4-F4 showing N-S trend. Throw of the faults ranges between 0 to 80 m. The dip of the faults has been considered between 70° for Geological modeling. All faults are oblique type, having variable throw.			
<b>6.</b>	<b>Coal Seams &amp; Reserve</b>				
	Coal Seams	Thickness Range (m)	Depth Range (m)	Resources (mt)	Grade
	XII	1.08-1.6			
	LC	0.51-0.58			
	XI	0.68-3.6		<b>6.778</b>	G9-G14
	X	1.4-8.06		<b>23.714</b>	G8-G13
	IX	2.2-9.49		<b>69.336</b>	G8-G12
	LB	0.4-1.7			
	VIII	1.1-9.61		<b>90.093</b>	G7-G13
	VII	0.58-7.5		<b>22.651</b>	G6-G15
	VI	0.74-5.3		<b>45.372</b>	G7-G16
	LA	0.5-0.72			
	V	0.5-3.34		<b>14.982</b>	G9-G15
	IV	0.5-5.0		20.696	G7-G16
	IIIB	0.5-4.57		23.414	G9-G14
	IIIA	0.42-2.6		7.97	G8-G17
	III	0.5-7.16		33.304	G10-G17
	III Top	0.82-5.1		13.719	G10-G15
	III Bot	0.77-3.63		7.751	G9-G14
	II		45.96-64.35	98.64	G10-G13
	IIT	0.8-29.44		253.608	G9-G17
	<b>IITT</b>	0.68-14.24		<b>32.402</b>	<b>G12-G15</b>
	<b>IITM</b>	0.66-4.3		<b>12.165</b>	<b>G12-G16</b>

	<b>IIT+IITM</b>	1.84-12.48	<b>5.897</b>	<b>G13-G15</b>
	<b>IITB</b>	0.92-4.8	<b>14.426</b>	<b>G12-G17</b>
	<b>IIB</b>	1.86-43.25	<b>316.770</b>	<b>G10-G17</b>
	<b>IIBT</b>	0.8-11.94	<b>17.080</b>	<b>G12-G16</b>
	<b>IIBM</b>	0.54-8.26	<b>17.301</b>	<b>G12-G17</b>
	<b>IIBT+IIBM</b>	2.52-15.03	<b>7.761</b>	<b>G10-G14</b>
	<b>IIBB</b>	0.38-18.2	<b>25.420</b>	<b>G11-G17</b>
	<b>L1</b>	0.5-2.7		
	<b>L2</b>	0.4-8.6		
	<b>L3</b>	0.4-2.04		
	<b>TOTAL</b>		<b>1181.25</b>	
<b>7.</b>	<b>Surface Constraints</b>	Few seasonal nalas, sparse habitations and village roads are considered as Surface Constraints. Amongst the three above features, only seasonal nala's are considered as potential "Constraint's" which may block coal reserves for future development. Resource estimation has been done separately upto a depth of 400 meter from the surface level. There are two seasonal nala's flowing almost in the central part of the block namely Lohra and Koa. These two nala combinedly occupies about 214.41 ha. The south western boundary is characterized by Dhulia Nadi. This occupies about 42.74 ha. Altogether, the surface area considered as constraints covers about 257.16 ha. About 190.23 Million Tons of Coal reserves have been estimated under these Nala segments.		
<b>8.</b>	<b>Grade of coal</b>	G12 (Provisional) based on weighted average grade as per grade-wise data available in GR.		
<b>9.</b>	<b>Decision Support System (DSS) Analysis</b>	-		
<b>10.</b>	<b>Eco Sensitive Zone (ESZ)</b>	Approx. 46 km from the boundary of ESZ of Udawa Lake		

#### PART B

Sr. No.	Features	Details
<b>1</b>	<b>Tentative Peak rated Capacity</b>	14.0 MTPA

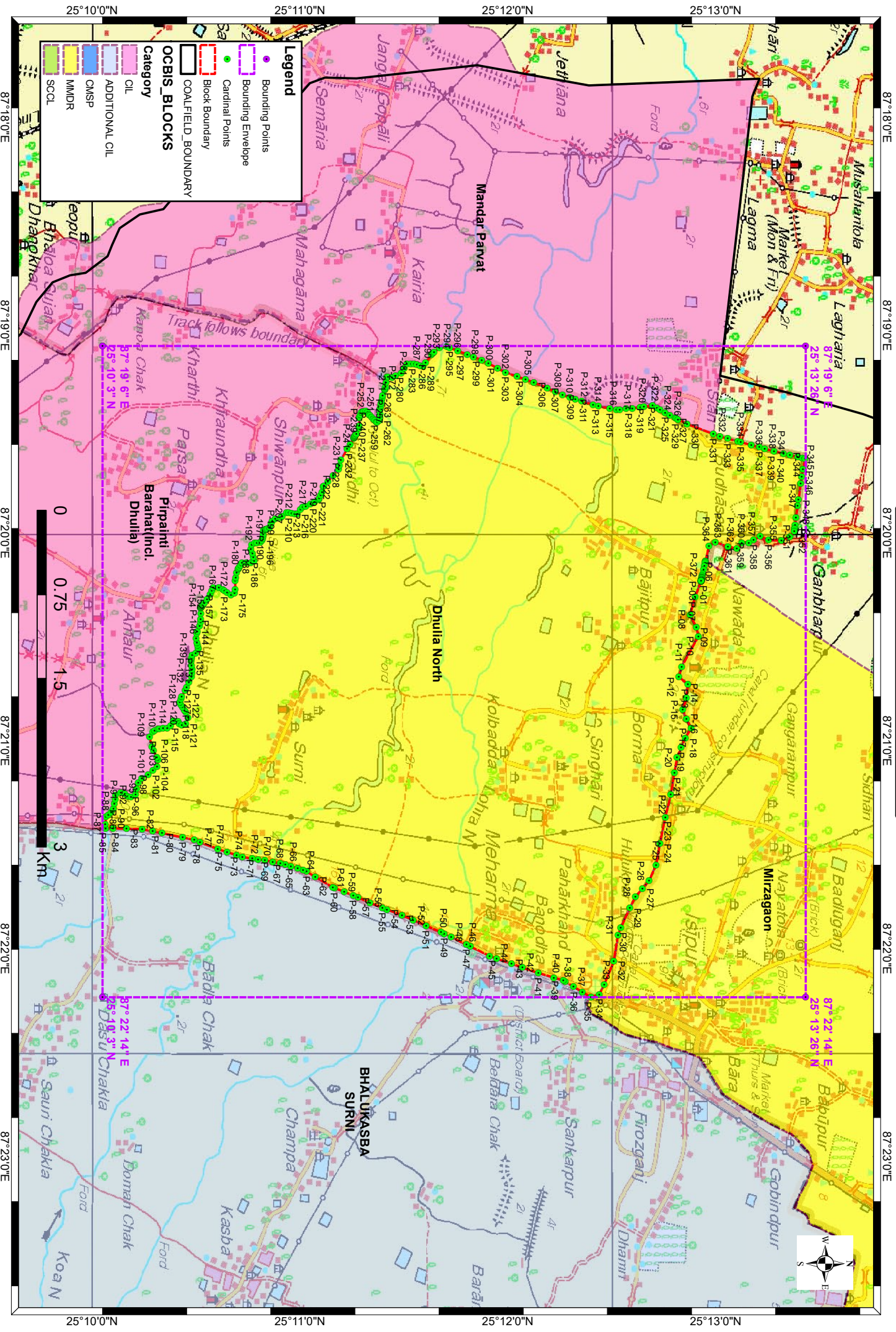
#### Disclaimer:

1. The analysis is done on Beta-version (Trial Version) of Decision Support System (DSS) of FSI / MOEF.
2. The Decision Rules for various parameters of this DSS System are controlled by FSI.
3. CMPDI only runs this DSS to obtain the status of any block based on these Decision Rules.
4. The database of the Decision Rules is updated by FSI from time to time.
5. CMPDI does not own any responsibility for variation in the results which are based on the Decision Rules of the FSI DSS in case of any updation of the database at FSI end.

6. ESZ analysis and tiger habitat/ corridor given here is based on the information available in public domain. Bidders are encouraged to verify this information and any other information additionally available.

# Dhulia North Block, Rajmahal Coalfield

FOR INTERNAL/RESTRICTED USE ONLY



**Provisional Cardinal Points for Dhulia North Block**

POINT NO	Longitude (WGS84)	Latitude (WGS84)
P-1	87° 20' 13.871" E	25° 12' 55.805" N
P-2	87° 20' 13.883" E	25° 12' 55.802" N
P-3	87° 20' 13.897" E	25° 12' 55.799" N
P-4	87° 20' 13.913" E	25° 12' 55.795" N
P-5	87° 20' 13.913" E	25° 12' 55.795" N
P-6	87° 20' 13.944" E	25° 12' 55.789" N
P-7	87° 20' 18.478" E	25° 12' 54.058" N
P-8	87° 20' 23.580" E	25° 12' 52.670" N
P-9	87° 20' 27.178" E	25° 12' 54.382" N
P-10	87° 20' 29.828" E	25° 12' 55.064" N
P-11	87° 20' 38.513" E	25° 12' 50.227" N
P-12	87° 20' 41.536" E	25° 12' 49.360" N
P-13	87° 20' 43.624" E	25° 12' 51.935" N
P-14	87° 20' 47.594" E	25° 12' 51.582" N
P-15	87° 20' 50.995" E	25° 12' 50.542" N
P-16	87° 20' 53.646" E	25° 12' 51.568" N
P-17	87° 20' 56.297" E	25° 12' 52.938" N
P-18	87° 20' 59.304" E	25° 12' 51.235" N
P-19	87° 21' 1.901" E	25° 12' 50.004" N
P-20	87° 21' 4.795" E	25° 12' 48.789" N
P-21	87° 21' 9.259" E	25° 12' 48.066" N
P-22	87° 21' 15.569" E	25° 12' 47.043" N
P-23	87° 21' 21.995" E	25° 12' 45.479" N
P-24	87° 21' 29.637" E	25° 12' 43.930" N
P-25	87° 21' 35.792" E	25° 12' 42.865" N
P-26	87° 21' 40.324" E	25° 12' 40.790" N
P-27	87° 21' 42.587" E	25° 12' 38.885" N
P-28	87° 21' 45.040" E	25° 12' 36.821" N
P-29	87° 21' 48.213" E	25° 12' 35.195" N
P-30	87° 21' 53.977" E	25° 12' 32.645" N
P-31	87° 21' 55.993" E	25° 12' 31.805" N
P-32	87° 22' 3.553" E	25° 12' 30.582" N
P-33	87° 22' 10.353" E	25° 12' 27.813" N
P-34	87° 22' 13.185" E	25° 12' 26.429" N
P-35	87° 22' 13.934" E	25° 12' 24.019" N
P-36	87° 22' 12.434" E	25° 12' 21.524" N
P-37	87° 22' 10.905" E	25° 12' 18.983" N
P-38	87° 22' 9.471" E	25° 12' 16.598" N
P-39	87° 22' 9.134" E	25° 12' 16.038" N
P-40	87° 22' 8.295" E	25° 12' 13.250" N
P-41	87° 22' 6.968" E	25° 12' 8.840" N
P-42	87° 22' 5.399" E	25° 12' 4.178" N
P-43	87° 22' 4.316" E	25° 12' 1.076" N
P-44	87° 22' 2.798" E	25° 11' 56.776" N
P-45	87° 22' 2.073" E	25° 11' 54.723" N
P-46	87° 21' 59.343" E	25° 11' 49.211" N
P-47	87° 21' 58.786" E	25° 11' 48.086" N

**Provisional Cardinal Points for Dhulia North Block**

POINT NO	Longitude (WGS84)	Latitude (WGS84)
P-48	87° 21' 56.590" E	25° 11' 43.653" N
P-49	87° 21' 55.606" E	25° 11' 41.664" N
P-50	87° 21' 55.207" E	25° 11' 40.752" N
P-51	87° 21' 53.329" E	25° 11' 36.454" N
P-52	87° 21' 51.713" E	25° 11' 32.755" N
P-53	87° 21' 50.275" E	25° 11' 29.463" N
P-54	87° 21' 48.671" E	25° 11' 25.123" N
P-55	87° 21' 48.178" E	25° 11' 23.791" N
P-56	87° 21' 46.687" E	25° 11' 20.290" N
P-57	87° 21' 45.191" E	25° 11' 16.762" N
P-58	87° 21' 44.651" E	25° 11' 15.421" N
P-59	87° 21' 43.585" E	25° 11' 12.777" N
P-60	87° 21' 42.454" E	25° 11' 9.970" N
P-61	87° 21' 42.275" E	25° 11' 9.526" N
P-62	87° 21' 39.213" E	25° 11' 4.451" N
P-63	87° 21' 37.715" E	25° 11' 1.968" N
P-64	87° 21' 37.347" E	25° 11' 0.881" N
P-65	87° 21' 36.843" E	25° 10' 59.395" N
P-66	87° 21' 36.175" E	25° 10' 57.424" N
P-67	87° 21' 35.617" E	25° 10' 55.780" N
P-68	87° 21' 35.336" E	25° 10' 54.351" N
P-69	87° 21' 34.914" E	25° 10' 52.209" N
P-70	87° 21' 34.466" E	25° 10' 49.933" N
P-71	87° 21' 34.180" E	25° 10' 47.995" N
P-72	87° 21' 33.923" E	25° 10' 46.252" N
P-73	87° 21' 33.501" E	25° 10' 43.398" N
P-74	87° 21' 32.956" E	25° 10' 41.702" N
P-75	87° 21' 32.070" E	25° 10' 38.944" N
P-76	87° 21' 31.193" E	25° 10' 36.324" N
P-77	87° 21' 29.228" E	25° 10' 31.241" N
P-78	87° 21' 28.545" E	25° 10' 29.475" N
P-79	87° 21' 27.843" E	25° 10' 26.169" N
P-80	87° 21' 26.600" E	25° 10' 20.178" N
P-81	87° 21' 26.071" E	25° 10' 17.508" N
P-82	87° 21' 25.477" E	25° 10' 14.515" N
P-83	87° 21' 25.367" E	25° 10' 9.969" N
P-84	87° 21' 25.273" E	25° 10' 6.082" N
P-85	87° 21' 25.221" E	25° 10' 3.935" N
P-86	87° 21' 24.133" E	25° 10' 3.823" N
P-87	87° 21' 21.974" E	25° 10' 4.029" N
P-88	87° 21' 21.358" E	25° 10' 4.748" N
P-89	87° 21' 20.638" E	25° 10' 5.519" N
P-90	87° 21' 19.610" E	25° 10' 6.187" N
P-91	87° 21' 18.222" E	25° 10' 6.444" N
P-92	87° 21' 16.937" E	25° 10' 6.753" N
P-93	87° 21' 15.653" E	25° 10' 6.855" N
P-94	87° 21' 14.984" E	25° 10' 8.294" N

**Provisional Cardinal Points for Dhulia North Block**

POINT NO	Longitude (WGS84)	Latitude (WGS84)
P-95	87° 21' 15.241" E	25° 10' 9.528" N
P-96	87° 21' 16.012" E	25° 10' 10.350" N
P-97	87° 21' 16.167" E	25° 10' 11.275" N
P-98	87° 21' 15.447" E	25° 10' 12.560" N
P-99	87° 21' 13.956" E	25° 10' 12.920" N
P-100	87° 21' 12.055" E	25° 10' 13.434" N
P-101	87° 21' 10.744" E	25° 10' 14.333" N
P-102	87° 21' 9.802" E	25° 10' 16.218" N
P-103	87° 21' 8.431" E	25° 10' 17.589" N
P-104	87° 21' 7.403" E	25° 10' 18.788" N
P-105	87° 21' 5.433" E	25° 10' 19.045" N
P-106	87° 21' 4.801" E	25° 10' 18.755" N
P-107	87° 21' 2.744" E	25° 10' 17.786" N
P-108	87° 21' 1.664" E	25° 10' 17.246" N
P-109	87° 20' 58.837" E	25° 10' 16.646" N
P-110	87° 20' 57.295" E	25° 10' 17.503" N
P-111	87° 20' 57.036" E	25° 10' 18.087" N
P-112	87° 20' 56.610" E	25° 10' 19.045" N
P-113	87° 20' 56.542" E	25° 10' 19.433" N
P-114	87° 20' 56.353" E	25° 10' 20.501" N
P-115	87° 20' 56.268" E	25° 10' 21.700" N
P-116	87° 20' 55.582" E	25° 10' 22.728" N
P-117	87° 20' 54.212" E	25° 10' 23.499" N
P-118	87° 20' 54.297" E	25° 10' 24.870" N
P-119	87° 20' 55.154" E	25° 10' 25.212" N
P-120	87° 20' 55.497" E	25° 10' 25.983" N
P-121	87° 20' 55.068" E	25° 10' 27.097" N
P-122	87° 20' 53.355" E	25° 10' 27.697" N
P-123	87° 20' 51.728" E	25° 10' 27.097" N
P-124	87° 20' 51.089" E	25° 10' 26.663" N
P-125	87° 20' 50.279" E	25° 10' 26.112" N
P-126	87° 20' 49.586" E	25° 10' 25.641" N
P-127	87° 20' 48.729" E	25° 10' 25.384" N
P-128	87° 20' 47.883" E	25° 10' 25.682" N
P-129	87° 20' 47.273" E	25° 10' 25.898" N
P-130	87° 20' 45.389" E	25° 10' 26.926" N
P-131	87° 20' 44.573" E	25° 10' 27.302" N
P-132	87° 20' 43.161" E	25° 10' 27.954" N
P-133	87° 20' 41.534" E	25° 10' 28.810" N
P-134	87° 20' 40.501" E	25° 10' 28.858" N
P-135	87° 20' 39.294" E	25° 10' 28.913" N
P-136	87° 20' 38.207" E	25° 10' 28.765" N
P-137	87° 20' 37.032" E	25° 10' 28.605" N
P-138	87° 20' 36.391" E	25° 10' 28.721" N
P-139	87° 20' 35.867" E	25° 10' 28.816" N
P-140	87° 20' 35.336" E	25° 10' 28.913" N
P-141	87° 20' 34.720" E	25° 10' 29.889" N



**Provisional Cardinal Points for Dhulia North Block**

POINT NO	Longitude (WGS84)	Latitude (WGS84)
P-142	87° 20' 33.435" E	25° 10' 30.712" N
P-143	87° 20' 33.046" E	25° 10' 30.619" N
P-144	87° 20' 32.355" E	25° 10' 30.455" N
P-145	87° 20' 31.707" E	25° 10' 30.332" N
P-146	87° 20' 30.454" E	25° 10' 30.095" N
P-147	87° 20' 28.912" E	25° 10' 30.198" N
P-148	87° 20' 28.440" E	25° 10' 30.391" N
P-149	87° 20' 26.907" E	25° 10' 31.020" N
P-150	87° 20' 25.725" E	25° 10' 31.380" N
P-151	87° 20' 24.960" E	25° 10' 31.396" N
P-152	87° 20' 23.310" E	25° 10' 31.431" N
P-153	87° 20' 21.614" E	25° 10' 31.329" N
P-154	87° 20' 21.449" E	25° 10' 31.453" N
P-155	87° 20' 21.410" E	25° 10' 31.479" N
P-156	87° 20' 21.368" E	25° 10' 31.510" N
P-157	87° 20' 21.273" E	25° 10' 31.580" N
P-158	87° 20' 21.183" E	25° 10' 31.646" N
P-159	87° 20' 21.143" E	25° 10' 31.677" N
P-160	87° 20' 21.058" E	25° 10' 31.739" N
P-161	87° 20' 20.928" E	25° 10' 31.835" N
P-162	87° 20' 20.793" E	25° 10' 31.935" N
P-163	87° 20' 20.640" E	25° 10' 32.048" N
P-164	87° 20' 20.431" E	25° 10' 32.202" N
P-165	87° 20' 20.192" E	25° 10' 32.400" N
P-166	87° 20' 19.218" E	25° 10' 33.202" N
P-167	87° 20' 17.676" E	25° 10' 34.144" N
P-168	87° 20' 16.704" E	25° 10' 34.586" N
P-169	87° 20' 15.791" E	25° 10' 35.001" N
P-170	87° 20' 15.791" E	25° 10' 36.628" N
P-171	87° 20' 16.382" E	25° 10' 37.751" N
P-172	87° 20' 16.648" E	25° 10' 38.256" N
P-173	87° 20' 17.110" E	25° 10' 38.981" N
P-174	87° 20' 17.847" E	25° 10' 40.140" N
P-175	87° 20' 17.419" E	25° 10' 41.168" N
P-176	87° 20' 16.305" E	25° 10' 41.339" N
P-177	87° 20' 13.821" E	25° 10' 41.339" N
P-178	87° 20' 12.888" E	25° 10' 41.506" N
P-179	87° 20' 11.423" E	25° 10' 41.768" N
P-180	87° 20' 10.454" E	25° 10' 42.226" N
P-181	87° 20' 10.399" E	25° 10' 42.253" N
P-182	87° 20' 10.225" E	25° 10' 42.335" N
P-183	87° 20' 9.795" E	25° 10' 42.539" N
P-184	87° 20' 9.213" E	25° 10' 42.942" N
P-185	87° 20' 8.682" E	25° 10' 43.310" N
P-186	87° 20' 8.510" E	25° 10' 44.595" N
P-187	87° 20' 8.510" E	25° 10' 45.879" N
P-188	87° 20' 8.082" E	25° 10' 46.822" N

**Provisional Cardinal Points for Dhulia North Block**

POINT NO	Longitude (WGS84)	Latitude (WGS84)
P-189	87° 20' 6.883" E	25° 10' 46.565" N
P-190	87° 20' 5.941" E	25° 10' 46.308" N
P-191	87° 20' 4.656" E	25° 10' 45.879" N
P-192	87° 20' 3.371" E	25° 10' 46.136" N
P-193	87° 20' 2.942" E	25° 10' 46.993" N
P-194	87° 20' 2.880" E	25° 10' 47.584" N
P-195	87° 20' 2.771" E	25° 10' 48.621" N
P-196	87° 20' 2.086" E	25° 10' 49.135" N
P-197	87° 20' 1.561" E	25° 10' 49.256" N
P-198	87° 20' 0.972" E	25° 10' 49.392" N
P-199	87° 20' 0.454" E	25° 10' 49.419" N
P-200	87° 19' 59.345" E	25° 10' 49.477" N
P-201	87° 19' 59.069" E	25° 10' 49.990" N
P-202	87° 19' 58.983" E	25° 10' 50.136" N
P-203	87° 19' 58.986" E	25° 10' 50.144" N
P-204	87° 19' 58.848" E	25° 10' 50.399" N
P-205	87° 19' 58.698" E	25° 10' 50.666" N
P-206	87° 19' 58.317" E	25° 10' 51.276" N
P-207	87° 19' 57.289" E	25° 10' 51.704" N
P-208	87° 19' 56.689" E	25° 10' 52.047" N
P-209	87° 19' 56.004" E	25° 10' 52.904" N
P-210	87° 19' 55.558" E	25° 10' 54.505" N
P-211	87° 19' 55.218" E	25° 10' 54.908" N
P-212	87° 19' 54.145" E	25° 10' 56.176" N
P-213	87° 19' 54.203" E	25° 10' 56.818" N
P-214	87° 19' 54.274" E	25° 10' 57.589" N
P-215	87° 19' 54.419" E	25° 10' 58.532" N
P-216	87° 19' 54.531" E	25° 10' 59.260" N
P-217	87° 19' 53.246" E	25° 11' 0.159" N
P-218	87° 19' 52.603" E	25° 11' 0.801" N
P-219	87° 19' 52.346" E	25° 11' 1.701" N
P-220	87° 19' 51.577" E	25° 11' 3.130" N
P-221	87° 19' 51.033" E	25° 11' 4.199" N
P-222	87° 19' 50.419" E	25° 11' 5.427" N
P-223	87° 19' 50.029" E	25° 11' 5.611" N
P-224	87° 19' 49.144" E	25° 11' 6.027" N
P-225	87° 19' 48.234" E	25° 11' 6.455" N
P-226	87° 19' 46.693" E	25° 11' 6.712" N
P-227	87° 19' 46.419" E	25° 11' 6.955" N
P-228	87° 19' 45.139" E	25° 11' 8.093" N
P-229	87° 19' 43.340" E	25° 11' 9.666" N
P-230	87° 19' 41.553" E	25° 11' 11.209" N
P-231	87° 19' 40.499" E	25° 11' 11.460" N
P-232	87° 19' 38.855" E	25° 11' 11.852" N
P-233	87° 19' 35.771" E	25° 11' 13.651" N
P-234	87° 19' 34.329" E	25° 11' 14.526" N
P-235	87° 19' 32.587" E	25° 11' 15.583" N

**Provisional Cardinal Points for Dhulia North Block**

POINT NO	Longitude (WGS84)	Latitude (WGS84)
P-236	87° 19' 32.540" E	25° 11' 15.612" N
P-237	87° 19' 32.506" E	25° 11' 15.633" N
P-238	87° 19' 32.446" E	25° 11' 15.669" N
P-239	87° 19' 32.360" E	25° 11' 15.722" N
P-240	87° 19' 32.195" E	25° 11' 15.822" N
P-241	87° 19' 32.027" E	25° 11' 15.916" N
P-242	87° 19' 31.778" E	25° 11' 16.054" N
P-243	87° 19' 31.393" E	25° 11' 16.268" N
P-244	87° 19' 31.376" E	25° 11' 16.278" N
P-245	87° 19' 29.860" E	25° 11' 17.120" N
P-246	87° 19' 29.077" E	25° 11' 17.120" N
P-247	87° 19' 26.648" E	25° 11' 17.120" N
P-248	87° 19' 26.523" E	25° 11' 17.172" N
P-249	87° 19' 25.876" E	25° 11' 17.442" N
P-250	87° 19' 25.106" E	25° 11' 17.762" N
P-251	87° 19' 24.992" E	25° 11' 18.143" N
P-252	87° 19' 24.915" E	25° 11' 18.400" N
P-253	87° 19' 24.721" E	25° 11' 19.047" N
P-254	87° 19' 25.244" E	25° 11' 19.505" N
P-255	87° 19' 25.749" E	25° 11' 19.947" N
P-256	87° 19' 26.116" E	25° 11' 20.293" N
P-257	87° 19' 26.581" E	25° 11' 20.732" N
P-258	87° 19' 27.100" E	25° 11' 21.223" N
P-259	87° 19' 27.536" E	25° 11' 21.635" N
P-260	87° 19' 28.061" E	25° 11' 22.131" N
P-261	87° 19' 27.948" E	25° 11' 22.330" N
P-262	87° 19' 27.547" E	25° 11' 23.030" N
P-263	87° 19' 26.675" E	25° 11' 23.064" N
P-264	87° 19' 25.598" E	25° 11' 23.105" N
P-265	87° 19' 24.207" E	25° 11' 23.159" N
P-266	87° 19' 23.976" E	25° 11' 23.205" N
P-267	87° 19' 23.407" E	25° 11' 23.319" N
P-268	87° 19' 22.730" E	25° 11' 23.454" N
P-269	87° 19' 21.947" E	25° 11' 23.611" N
P-270	87° 19' 21.003" E	25° 11' 23.800" N
P-271	87° 19' 20.352" E	25° 11' 23.930" N
P-272	87° 19' 18.775" E	25° 11' 24.493" N
P-273	87° 19' 18.553" E	25° 11' 24.572" N
P-274	87° 19' 18.500" E	25° 11' 24.581" N
P-275	87° 19' 18.286" E	25° 11' 24.616" N
P-276	87° 19' 17.811" E	25° 11' 24.693" N
P-277	87° 19' 16.594" E	25° 11' 24.890" N
P-278	87° 19' 14.941" E	25° 11' 25.158" N
P-279	87° 19' 14.967" E	25° 11' 25.422" N
P-280	87° 19' 15.086" E	25° 11' 26.633" N
P-281	87° 19' 14.575" E	25° 11' 27.635" N
P-282	87° 19' 13.769" E	25° 11' 29.216" N

**Provisional Cardinal Points for Dhulia North Block**

POINT NO	Longitude (WGS84)	Latitude (WGS84)
P-283	87° 19' 12.513" E	25° 11' 30.100" N
P-284	87° 19' 11.316" E	25° 11' 30.942" N
P-285	87° 19' 11.318" E	25° 11' 32.049" N
P-286	87° 19' 11.321" E	25° 11' 33.006" N
P-287	87° 19' 11.487" E	25° 11' 33.753" N
P-288	87° 19' 11.715" E	25° 11' 34.778" N
P-289	87° 19' 11.895" E	25° 11' 35.586" N
P-290	87° 19' 10.882" E	25° 11' 36.306" N
P-291	87° 19' 8.498" E	25° 11' 38.002" N
P-292	87° 19' 8.227" E	25° 11' 38.324" N
P-293	87° 19' 7.897" E	25° 11' 38.715" N
P-294	87° 19' 6.613" E	25° 11' 40.242" N
P-295	87° 19' 6.240" E	25° 11' 42.479" N
P-296	87° 19' 6.545" E	25° 11' 43.269" N
P-297	87° 19' 7.441" E	25° 11' 45.597" N
P-298	87° 19' 8.483" E	25° 11' 48.328" N
P-299	87° 19' 9.162" E	25° 11' 50.115" N
P-300	87° 19' 10.048" E	25° 11' 52.449" N
P-301	87° 19' 11.076" E	25° 11' 54.407" N
P-302	87° 19' 12.472" E	25° 11' 57.064" N
P-303	87° 19' 13.659" E	25° 11' 59.323" N
P-304	87° 19' 14.814" E	25° 12' 2.658" N
P-305	87° 19' 15.660" E	25° 12' 5.100" N
P-306	87° 19' 16.517" E	25° 12' 7.575" N
P-307	87° 19' 18.205" E	25° 12' 11.428" N
P-308	87° 19' 19.229" E	25° 12' 13.765" N
P-309	87° 19' 20.131" E	25° 12' 15.824" N
P-310	87° 19' 20.831" E	25° 12' 17.970" N
P-311	87° 19' 21.339" E	25° 12' 19.529" N
P-312	87° 19' 21.945" E	25° 12' 21.384" N
P-313	87° 19' 22.991" E	25° 12' 24.592" N
P-314	87° 19' 23.341" E	25° 12' 26.126" N
P-315	87° 19' 24.106" E	25° 12' 29.478" N
P-316	87° 19' 24.521" E	25° 12' 31.298" N
P-317	87° 19' 24.408" E	25° 12' 32.271" N
P-318	87° 19' 24.186" E	25° 12' 34.181" N
P-319	87° 19' 23.978" E	25° 12' 35.973" N
P-320	87° 19' 23.711" E	25° 12' 38.188" N
P-321	87° 19' 23.570" E	25° 12' 39.236" N
P-322	87° 19' 23.225" E	25° 12' 41.795" N
P-323	87° 19' 23.957" E	25° 12' 43.075" N
P-324	87° 19' 24.461" E	25° 12' 43.957" N
P-325	87° 19' 25.317" E	25° 12' 45.453" N
P-326	87° 19' 26.075" E	25° 12' 46.778" N
P-327	87° 19' 26.838" E	25° 12' 48.317" N
P-328	87° 19' 27.025" E	25° 12' 48.693" N
P-329	87° 19' 27.254" E	25° 12' 49.156" N

**Provisional Cardinal Points for Dhulia North Block**

POINT NO	Longitude (WGS84)	Latitude (WGS84)
P-330	87° 19' 28.547" E	25° 12' 51.762" N
P-331	87° 19' 31.454" E	25° 12' 59.357" N
P-332	87° 19' 32.165" E	25° 13' 1.216" N
P-333	87° 19' 32.778" E	25° 13' 3.459" N
P-334	87° 19' 33.574" E	25° 13' 6.375" N
P-335	87° 19' 33.824" E	25° 13' 7.290" N
P-336	87° 19' 34.639" E	25° 13' 10.274" N
P-337	87° 19' 35.277" E	25° 13' 12.633" N
P-338	87° 19' 35.687" E	25° 13' 14.178" N
P-339	87° 19' 36.390" E	25° 13' 16.822" N
P-340	87° 19' 37.131" E	25° 13' 19.612" N
P-341	87° 19' 37.519" E	25° 13' 21.403" N
P-342	87° 19' 38.019" E	25° 13' 23.711" N
P-343	87° 19' 38.302" E	25° 13' 25.019" N
P-344	87° 19' 38.471" E	25° 13' 25.803" N
P-345	87° 19' 41.683" E	25° 13' 25.187" N
P-346	87° 19' 43.753" E	25° 13' 24.827" N
P-347	87° 19' 45.745" E	25° 13' 24.546" N
P-348	87° 19' 50.423" E	25° 13' 23.887" N
P-349	87° 19' 52.132" E	25° 13' 23.646" N
P-350	87° 19' 55.550" E	25° 13' 23.176" N
P-351	87° 19' 57.654" E	25° 13' 22.897" N
P-352	87° 19' 58.726" E	25° 13' 22.756" N
P-353	87° 19' 59.456" E	25° 13' 22.659" N
P-354	87° 20' 1.155" E	25° 13' 21.451" N
P-355	87° 20' 2.094" E	25° 13' 19.040" N
P-356	87° 20' 2.083" E	25° 13' 15.256" N
P-357	87° 20' 0.942" E	25° 13' 12.850" N
P-358	87° 20' 2.072" E	25° 13' 10.955" N
P-359	87° 20' 2.824" E	25° 13' 9.577" N
P-360	87° 20' 2.819" E	25° 13' 7.512" N
P-361	87° 20' 4.517" E	25° 13' 6.132" N
P-362	87° 20' 3.943" E	25° 13' 3.553" N
P-363	87° 20' 2.609" E	25° 12' 59.943" N
P-364	87° 20' 3.738" E	25° 12' 58.048" N
P-365	87° 20' 8.060" E	25° 12' 57.061" N
P-366	87° 20' 8.260" E	25° 12' 57.020" N
P-367	87° 20' 8.702" E	25° 12' 56.924" N
P-368	87° 20' 9.464" E	25° 12' 56.759" N
P-369	87° 20' 10.650" E	25° 12' 56.502" N
P-370	87° 20' 11.771" E	25° 12' 56.259" N
P-371	87° 20' 12.331" E	25° 12' 56.138" N
P-372	87° 20' 12.722" E	25° 12' 56.053" N
P-373	87° 20' 12.971" E	25° 12' 55.999" N
P-374	87° 20' 13.117" E	25° 12' 55.968" N
P-375	87° 20' 13.349" E	25° 12' 55.918" N
P-376	87° 20' 13.452" E	25° 12' 55.895" N

**Provisional Cardinal Points for Dhulia North Block**

POINT NO	Longitude (WGS84)	Latitude (WGS84)
P-377	87° 20' 13.562" E	25° 12' 55.871" N
P-378	87° 20' 13.583" E	25° 12' 55.867" N
P-379	87° 20' 13.682" E	25° 12' 55.846" N
P-380	87° 20' 13.738" E	25° 12' 55.833" N
P-381	87° 20' 13.822" E	25° 12' 55.815" N
P-382	87° 20' 13.833" E	25° 12' 55.813" N
P-383	87° 20' 13.838" E	25° 12' 55.812" N