

DATIMA COAL BLOCK SUMMARY

PART A

Sr. No	Features	Details
1. Location		
	Coal Block	Datima
	Latitude	23° 13' 48" N to 23° 16' 00" N (Provisional)
	Longitude	82° 57' 41" E to 82° 59' 15" E (Provisional)
	Topo Sheet No.	64 I/16
	Coalfield	Bishrampur
	Villages	Rai in the NE part, Kumda in the SW part and Datima in NW part.
	Tehsil/Taluka	Surajpur, Bhaiyathan
	District	Surajpur
	State	Chhattisgarh
2. Connectivity with Block		
	Nearest Rail Head	Bishrampur railway station, which is the terminus for the Bijuri-Bishrampur broad gauge branch line of S.E. Railway is about 13 km southwest of Datima block. Karanji is the nearest railway station located 6 km NW of the block on the Bijuri-Bishrampur branch line.
	Road	An E-W trending metalled road which passes through the northern part of Datima block provides accessibility from Latori village, situated about 14 km away on the N-S trending state highway No.5 connecting Ambikapur to Varanasi The block is accessible by a metalled road from Bishrampur, situated 15 km south on the Ambikapur-Manendragarh state highway No.14.
	Airport	-
3. Area		
	Geological Block Area	8.08 sq.km.
	Forest Area	Approx. 4% (As per FSI)
	Non-Forest Area	Approx. 96% (As per FSI)
4. Climate and Topography		
	Average Annual Rainfall	1375.30 mm
	Temperature (Min. — Max.)	5°C-41°C

	Local Surface Drainage Channels	The Rehar river constitutes the main drainage of the area, lies outside the block in the west. There are many seasonal nalas flow through the block and discharge its water in Pasang nala flowing through the southern part of the block.			
	Rivers	Rehar river which lies outside the block in the west.			
5.	Exploration				
	Status	Explored in Detail			
	Exploration Agency	CMPDI			
	Total Number of Boreholes with meterage	85 Boreholes; 8937.77 m			
	Borehole Density	Approx. 10 Boreholes/sq.km.			
	General Dip of Seams	Northern part: 1°-4° towards NE and E respectively Central and Southern part: 1°-2° towards NE			
	General Strike Direction	In northern portion the coal beds depict a swing from NW-SE to N-S. In central and southern parts the beds exhibit NW-SE strike.			
6.	Coal Seams & Reserve				
	Coal Seams	Thickness Range (m)	Depth Range (m)	Geological Reserve (Proved)	Grade
	Seam-VII*	0.05-2.74	7.00-97.38	-	
	Seam-VI*	0.05-1.20	-	-	
	Seam-V/Pasang	0.05-3.64	55.50-147.00	13.300	B-E
		Total		13.300	
7.	Surface Constraints	Rail line in the western boundary. Roads crossing the block in the northern part.			
8.	Grade of the block	G7 (Provisional) based on weighted average grade as per data available in GR.			
9.	Decision Support System (DSS) Analysis	-			
10.	Eco Sensitive Zone (ESZ) Analysis	Approx. 9 kms from the boundary of TR-PA of Tamorpingla, approx. 28 km from the boundary of Tamorpingla WLS from the Northern block boundary and approx. 32 kms to the buffer zone of unnotified Lemru Elephant Reserve from the Southern block boundary.			

* These coal seams are not persistent in thickness and have been found to be unworkable.

PART B

Sr. No.	Features	Details
1.	Previous Allocation	
	Name and Address of Allocatee	M/s Binani Cement Limited, Mercantile Chambers, 2 nd floor, 12 J.N. Heredia Marg, Ballard Estate, Mumbai- 400001
2.	Target Capacity as per Mining Plan	Mining Plan not available
	Tentative Peak Rated Mine Capacity	0.36 Mty
3.	Status of Clearances/Approvals	
	Mining Plan/ Mine Closure Plan	NA
	Forest Clearance	NA
	Environmental Clearance	NA
	Mining Lease	NA
	Land Acquisition	---
	No. of PAPs as per Mining Plan	---
4.	Surface Infrastructure already built, if any.	Nil

Note:

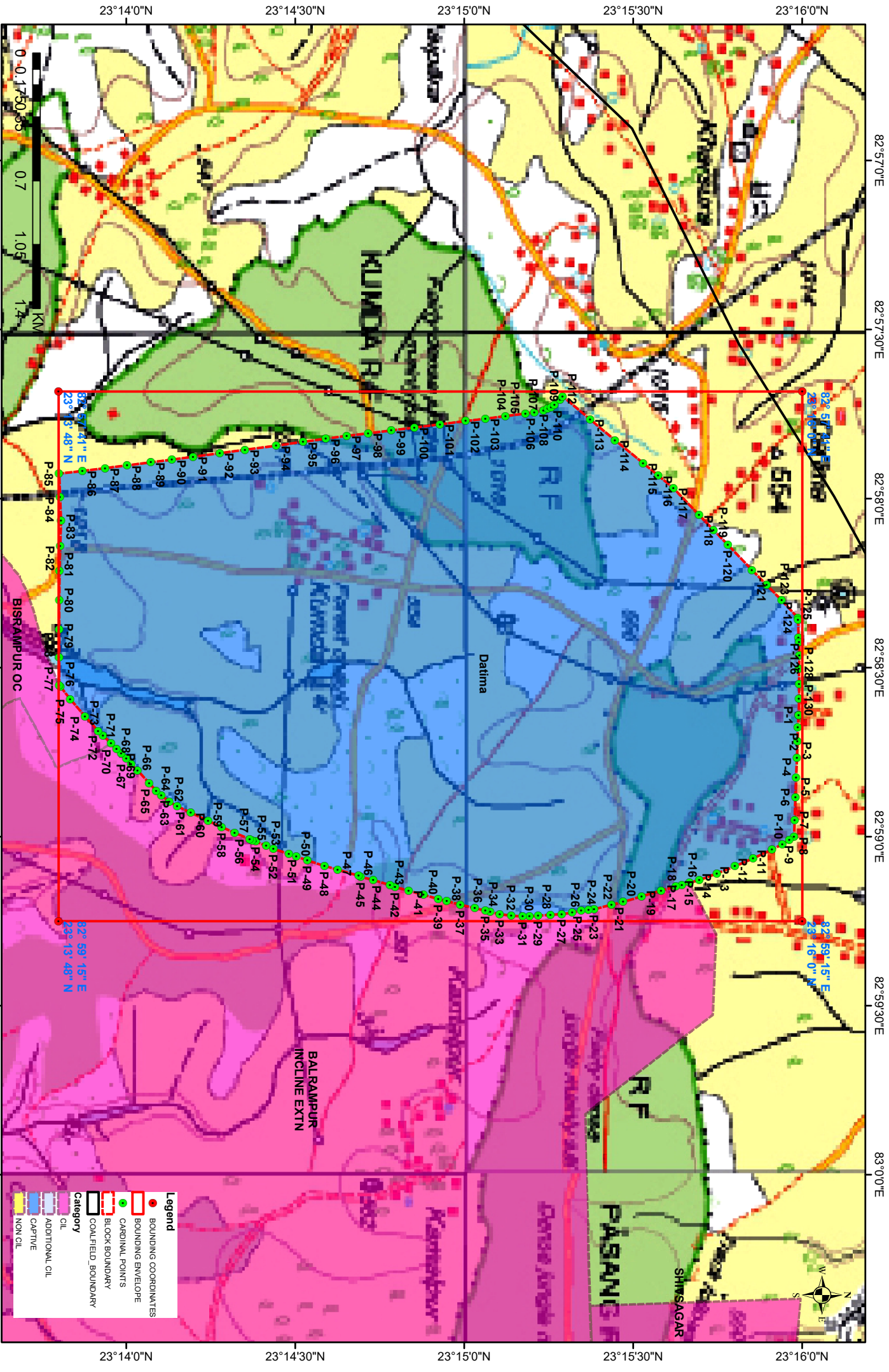
1. The above data is compiled from Geological Report, Mining Plan and the data furnished by the prior allottee in Annexure-I/II, as available. For clarifications with regard to above data, please refer aforesaid source documents.
2. The boundary of the block has been taken from GR after conversion to WGS84 system by feature matching. The block boundary is provisional and the cardinal points, bounding co-ordinates are approximate.
3. There may be a difference in area in the shape file and GR. Area in the shape file is based on feature mapped plan of the block as given in the GR. So, the area is tentative and field DGPS survey is required to ascertain the exact area.

Disclaimer:

1. The analysis is done on Beta-version (Trial Version) of Decision Support System (DSS) of FSI / MOEF.
2. The Decision Rules for various parameters of this DSS System are controlled by FSI.
3. CMPDI only runs this DSS to obtain the status of any block based on these Decision Rules.
4. The database of the Decision Rules is updated by FSI from time to time.
5. CMPDI does not own any responsibility for variation in the results which are based on the Decision Rules of the FSI DSS in case of any updation of the database at FSI end.
6. ESZ analysis and tiger habitat/ corridor given here is based on the information available in public domain. Bidders are encouraged to verify this information and any other information additionally available.

Datima Block, Bishrampur Coalfield

FOR INTERNAL/RESTRICTED USE ONLY



NOTE: Coordinates are provisional in WGS84 System

0 0.1750 0.5 0.7 1.05 1.4 KM

23°14'0"N 23°14'30"N 23°15'0"N 23°15'30"N 23°16'0"N

82°57'0"E 82°57'30"E 82°58'0"E 82°58'30"E 82°59'0"E 82°59'30"E 83°0'0"E

Legend

- BOUNDING COORDINATES
- BOUNDING ENVELOPE
- CARDINAL POINTS
- BLOCK BOUNDARY
- COALFIELD BOUNDARY

Category

- CIL
- ADDITIONAL OIL
- CAPTIVE
- NON OIL

Provisional Cardinal Points for Datima Block

POINT NO	Longitude (WGS84)	Latitude (WGS84)
P-1	82° 58' 38.463" E	23° 15' 59.371" N
P-2	82° 58' 40.559" E	23° 15' 59.210" N
P-3	82° 58' 43.092" E	23° 15' 59.180" N
P-4	82° 58' 45.998" E	23° 15' 59.054" N
P-5	82° 58' 49.501" E	23° 15' 58.910" N
P-6	82° 58' 52.974" E	23° 15' 58.804" N
P-7	82° 58' 57.044" E	23° 15' 58.659" N
P-8	82° 59' 0.019" E	23° 15' 58.549" N
P-9	82° 59' 0.581" E	23° 15' 57.720" N
P-10	82° 59' 1.337" E	23° 15' 56.480" N
P-11	82° 59' 2.273" E	23° 15' 54.644" N
P-12	82° 59' 3.832" E	23° 15' 51.301" N
P-13	82° 59' 5.236" E	23° 15' 48.059" N
P-14	82° 59' 6.514" E	23° 15' 44.872" N
P-15	82° 59' 7.683" E	23° 15' 41.749" N
P-16	82° 59' 8.186" E	23° 15' 40.015" N
P-17	82° 59' 8.582" E	23° 15' 38.651" N
P-18	82° 59' 8.828" E	23° 15' 37.573" N
P-19	82° 59' 9.554" E	23° 15' 34.969" N
P-20	82° 59' 10.587" E	23° 15' 31.502" N
P-21	82° 59' 11.576" E	23° 15' 28.196" N
P-22	82° 59' 12.087" E	23° 15' 26.154" N
P-23	82° 59' 12.856" E	23° 15' 23.059" N
P-24	82° 59' 13.018" E	23° 15' 22.068" N
P-25	82° 59' 13.121" E	23° 15' 20.777" N
P-26	82° 59' 13.463" E	23° 15' 19.177" N
P-27	82° 59' 13.734" E	23° 15' 17.313" N
P-28	82° 59' 13.849" E	23° 15' 15.328" N
P-29	82° 59' 14.001" E	23° 15' 13.135" N
P-30	82° 59' 14.150" E	23° 15' 11.586" N
P-31	82° 59' 14.152" E	23° 15' 10.372" N
P-32	82° 59' 13.995" E	23° 15' 8.353" N
P-33	82° 59' 13.755" E	23° 15' 6.316" N
P-34	82° 59' 13.360" E	23° 15' 4.620" N
P-35	82° 59' 13.121" E	23° 15' 3.774" N
P-36	82° 59' 12.669" E	23° 15' 1.891" N
P-37	82° 59' 12.062" E	23° 14' 59.310" N
P-38	82° 59' 11.414" E	23° 14' 56.904" N
P-39	82° 59' 11.069" E	23° 14' 55.402" N
P-40	82° 59' 10.300" E	23° 14' 52.780" N
P-41	82° 59' 9.592" E	23° 14' 50.165" N
P-42	82° 59' 8.911" E	23° 14' 47.736" N
P-43	82° 59' 8.596" E	23° 14' 46.825" N
P-44	82° 59' 7.673" E	23° 14' 43.884" N
P-45	82° 59' 7.108" E	23° 14' 41.622" N
P-46	82° 59' 6.927" E	23° 14' 41.268" N
P-47	82° 59' 5.860" E	23° 14' 37.526" N

Provisional Cardinal Points for Datima Block

POINT NO	Longitude (WGS84)	Latitude (WGS84)
P-48	82° 59' 5.187" E	23° 14' 35.214" N
P-49	82° 59' 4.220" E	23° 14' 32.177" N
P-50	82° 59' 3.472" E	23° 14' 30.192" N
P-51	82° 59' 3.069" E	23° 14' 28.887" N
P-52	82° 59' 2.129" E	23° 14' 26.133" N
P-53	82° 59' 1.599" E	23° 14' 24.870" N
P-54	82° 59' 0.850" E	23° 14' 23.020" N
P-55	82° 59' 0.628" E	23° 14' 22.376" N
P-56	82° 59' 0.428" E	23° 14' 21.917" N
P-57	82° 58' 59.298" E	23° 14' 19.233" N
P-58	82° 58' 58.287" E	23° 14' 16.948" N
P-59	82° 58' 57.190" E	23° 14' 14.545" N
P-60	82° 58' 55.721" E	23° 14' 11.483" N
P-61	82° 58' 54.611" E	23° 14' 9.040" N
P-62	82° 58' 53.784" E	23° 14' 7.663" N
P-63	82° 58' 52.629" E	23° 14' 6.236" N
P-64	82° 58' 51.867" E	23° 14' 5.315" N
P-65	82° 58' 50.492" E	23° 14' 4.059" N
P-66	82° 58' 48.224" E	23° 14' 2.005" N
P-67	82° 58' 47.102" E	23° 14' 0.892" N
P-68	82° 58' 46.110" E	23° 14' 0.028" N
P-69	82° 58' 45.213" E	23° 13' 59.122" N
P-70	82° 58' 44.469" E	23° 13' 58.297" N
P-71	82° 58' 43.459" E	23° 13' 57.315" N
P-72	82° 58' 41.999" E	23° 13' 55.896" N
P-73	82° 58' 41.227" E	23° 13' 55.011" N
P-74	82° 58' 38.626" E	23° 13' 52.688" N
P-75	82° 58' 35.607" E	23° 13' 50.060" N
P-76	82° 58' 33.353" E	23° 13' 48.318" N
P-77	82° 58' 33.174" E	23° 13' 48.098" N
P-78	82° 58' 28.211" E	23° 13' 48.093" N
P-79	82° 58' 23.248" E	23° 13' 48.089" N
P-80	82° 58' 18.023" E	23° 13' 48.115" N
P-81	82° 58' 12.798" E	23° 13' 48.142" N
P-82	82° 58' 8.352" E	23° 13' 48.288" N
P-83	82° 58' 3.907" E	23° 13' 48.433" N
P-84	82° 57' 59.733" E	23° 13' 48.258" N
P-85	82° 57' 55.559" E	23° 13' 48.083" N
P-86	82° 57' 55.098" E	23° 13' 52.223" N
P-87	82° 57' 54.591" E	23° 13' 56.263" N
P-88	82° 57' 54.105" E	23° 14' 0.165" N
P-89	82° 57' 53.566" E	23° 14' 4.364" N
P-90	82° 57' 53.075" E	23° 14' 8.121" N
P-91	82° 57' 52.584" E	23° 14' 11.878" N
P-92	82° 57' 51.939" E	23° 14' 16.600" N
P-93	82° 57' 51.329" E	23° 14' 21.081" N
P-94	82° 57' 50.606" E	23° 14' 26.629" N

Provisional Cardinal Points for Datima Block

POINT NO	Longitude (WGS84)	Latitude (WGS84)
P-95	82° 57' 49.922" E	23° 14' 31.411" N
P-96	82° 57' 49.346" E	23° 14' 35.447" N
P-97	82° 57' 48.875" E	23° 14' 39.166" N
P-98	82° 57' 48.416" E	23° 14' 42.964" N
P-99	82° 57' 47.907" E	23° 14' 47.058" N
P-100	82° 57' 47.398" E	23° 14' 51.152" N
P-101	82° 57' 46.822" E	23° 14' 55.705" N
P-102	82° 57' 46.247" E	23° 15' 0.258" N
P-103	82° 57' 45.823" E	23° 15' 3.765" N
P-104	82° 57' 45.361" E	23° 15' 7.324" N
P-105	82° 57' 44.898" E	23° 15' 10.882" N
P-106	82° 57' 44.730" E	23° 15' 12.458" N
P-107	82° 57' 44.337" E	23° 15' 14.080" N
P-108	82° 57' 44.076" E	23° 15' 14.801" N
P-109	82° 57' 43.746" E	23° 15' 15.420" N
P-110	82° 57' 43.353" E	23° 15' 16.019" N
P-111	82° 57' 42.439" E	23° 15' 17.017" N
P-112	82° 57' 41.843" E	23° 15' 17.466" N
P-113	82° 57' 45.951" E	23° 15' 22.340" N
P-114	82° 57' 49.630" E	23° 15' 26.762" N
P-115	82° 57' 53.704" E	23° 15' 31.756" N
P-116	82° 57' 55.918" E	23° 15' 34.446" N
P-117	82° 57' 58.132" E	23° 15' 37.137" N
P-118	82° 58' 2.909" E	23° 15' 41.690" N
P-119	82° 58' 5.565" E	23° 15' 44.257" N
P-120	82° 58' 8.221" E	23° 15' 46.824" N
P-121	82° 58' 12.664" E	23° 15' 51.062" N
P-122	82° 58' 15.349" E	23° 15' 53.707" N
P-123	82° 58' 18.034" E	23° 15' 56.353" N
P-124	82° 58' 21.144" E	23° 15' 59.238" N
P-125	82° 58' 21.548" E	23° 15' 59.260" N
P-126	82° 58' 24.631" E	23° 15' 59.348" N
P-127	82° 58' 25.498" E	23° 15' 59.448" N
P-128	82° 58' 27.800" E	23° 15' 59.498" N
P-129	82° 58' 30.174" E	23° 15' 59.422" N
P-130	82° 58' 32.936" E	23° 15' 59.450" N
P-131	82° 58' 35.463" E	23° 15' 59.435" N