

# CHORITAND TILAIYA COAL BLOCK SUMMARY

## PART A

Sr. No	Features	Details
<b>1.</b>	<b>Location</b>	
	Coal Block	Choritand-Tilaiya
	Latitude	23° 46' 13" - 23° 47' 14" (N) (Provisional)
	Longitude	85° 37' 41" - 85° 39' 04" (E) (Provisional)
	Topo Sheet No.	73 E/10
	Coalfield	West Bokaro
	Villages	Tilaiya, Jagesar, Dakasarm
	Tehsil/Taluka	Gumia, Mandu
	District	Bokaro, Hazaribagh
	State	Jharkhand
<b>2.</b>	<b>Connectivity with Block</b>	
	Nearest Rail Head	The Gomoh-Barkakana Loop Line of the Eastern Railway is located in the eastern part of the coalfield. Danae Railway Station on this line is located at a distance of about 1 km. from the north-eastern limit of the block. Chainpur is another important railway station on this line which cater the needs of transportation of coals from this coalfield.
	Road	The Ranchi-Hazaribagh Road (NH-33) is located in the western part of the West Bokaro Coalfield. A black topped road branching off from this highway near Charhi runs to Ghato and Kedla, the two important mining centres. Another tar road branching off from this highway near Kuju is located in the Southern part of the coalfield. This road passes through Ara and Sarubera collieries. Besides these two roads, seeral fair weather roads traversing through parts of the coalfield provide good road facilities. The Choritanr-Tilaiya Block is approachable by a tar road branching from the NH-33 near Kuju and is a major surface connection for Kuju, Ara and Sarubera Collieries. The distance of Choritanr-Tilaiya Block form the NH-33 is about 16 km.
	Airport	The nearest airport is at Ranchi at a distance of about 65 km. from the block.
<b>3.</b>	<b>Area</b>	
	Geological Block Area	2.49 sq.km. (As per shape file; Refer Note No. 3)
	Forest Area	Approx. 1% (As per FSI Map)
	Non-Forest Area	Approx. 99% (As per FSI Map)
<b>4.</b>	<b>Climate and Topography</b>	
	Average Annual Rainfall	1200 – 1400 mm
	Temperature (Min. — Max.)	10°C-45°C

	Local Surface Drainage Channels	The Bokaro River and its tributaries constitute the main drainage. The river flows through the coalfield from west to east and joins the Damodar River near Jarangdih in the East Bokaro Coalfield. The prominent tributaries of the Bokaro River are the Dudhi nala, Chotha nadi and Chutua nadi.				
	Rivers	Bokaro River in the North West boundary				
<b>5.</b>	<b>Exploration</b>					
	Status	Explored in Detail				
	Exploration Agency	MECL				
	Total Number of Boreholes with meterage	46 Boreholes; 12614.80m				
	Borehole Density	Approx. 19 Boreholes/sq.km.				
	General Dip of Seams	Dip of the formation around 15° to 18° due north-west. However steeper dips around 30° are noticed in the south-eastern part of the block.				
	General Strike Direction	The generalized strike of the formations is almost NE-SW over the major part of the block.				
<b>6.</b>	<b>Coal Seams &amp; Reserve</b>					
	Coal Seams	Thickness Range (m)	Depth Range (m)	Geological Reserve (MT)		Grade
				Proved	Indicated	
	XII	0.67 -1.20				
	XI	0.10 – 0.85				
	XA	0.12 – 1.20				
	X	0.38 – 6.65	15.70 – 100.45	7.826	-	W-III to Ungraded
	IXA	0.10 – 2.40	13.50 – 121.45	3.055	0.138	W-I to Ungraded
	IX	0.12 - 4.55	15.10 -133.55	4.035	0.044	S-II to Ungraded
	VIII – C	0.10 – 2.86	21.25 – 130.80	0.490	-	S-II to Ungraded
	VIII – B	0.11 – 4.30	25.14 – 166.60			
	VIII –A	0.05 – 3.54	14.48 – 189.10			
	VIII	0.20 – 4.05	21.76 – 203.90	2.121	0.704	W-I to Ungraded
	VII – C	0.13 – 2.00	36.32 – 206.47			
	VII – B	0.10 -2.31	105.92 – 262.00			
	VII – A	0.10 – 2.26	95.40 – 269.85			
	VII/VI	2.20 – 14.05	112.20 – 287.25	6.620	2.892	W-III to Ungraded
	V	2.30 – 11.01	166.05 – 313.01	15.769	3.488	W-II to Ungraded
	IV	0.77 – 6.50	172.50 – 322.22	4.582	1.757	W-II to Ungraded
	IIIA	0.26 – 1.35				
	III	4.50 – 12.06	212.85 – 371.58	17.863	7.530	W-IV to Ungraded
	IIB	0.60 – 3.22	211.00 – 371.37	3.152	1.920	W-III to Ungraded
	IIA	0.09 – 5.70				
	II (TOP)	0.50 – 3.96		-	4.399	Ungraded
	II (BOTTOM)	1.55 – 2.00				
	II (COMBINED)	3.10 – 15.40		-	8.650	Ungraded
	I	0.45 – 3.16				
			<b>Total</b>	<b>65.513</b>	<b>31.522</b>	
			<b>Grand Total</b>	<b>97.035</b>		
<b>7.</b>	<b>Surface Constraints</b>	Rail line is eastern limit of the block. Loiyo-Tilaiya road passes through the block. Bokaro river on the northern boundary.				
<b>8.</b>	<b>Grade of the block</b>	W-V (Provisional) based on weighted average grade as per grade-wise data available in GR.				

<b>9.</b>	<b>Decision Support System (DSS) Analysis</b>	Hydrology Info: Polygon touches Bokaro Nadi-Inviolate
<b>10.</b>	<b>Eco Sensitive Zone (ESZ) Analysis</b>	Approx. 35.2 km to the Hazaribagh ESZ from the North-western block boundary and 46.6 km to the Parasnath ESZ from the North-eastern block boundary.

**PART B**

<b>Sr. No.</b>	<b>Features</b>	<b>Details</b>
<b>1.</b>	<b>Previous Allocation</b>	
	Name and Address of Allocatee	C T MINING PVT Ltd. 14 Viswakarma centre, behind carmel school, Bal bihar, sonari, Jamshedpur-831011, jharkhand
<b>2.</b>	<b>Target Capacity as per Mining Plan</b>	<b>0.78 Mty</b>
<b>3.</b>	<b>Status of Clearances/Approvals</b>	
	Mining Plan/ Mine Closure Plan	Approval obtained as per Annexure-Q provided by C T MINING PVT Ltd. Via ref No.:13016/33I/2009-CA-I dated 18.02.2010
	Forest Clearance	Pending with state government
	Environmental Clearance	In principal approval of EMP
	Mining Lease	Mining Lease application pending with state Govt.
	Land Acquisition	102.66 Acre of land purchased for compensatory afforestation provided by C T MINING PVT Ltd. In Annexure - I
	No. of PAFs	This exercise is yet to be completed
<b>4.</b>	Surface Infrastructure already built, if any.	Nil

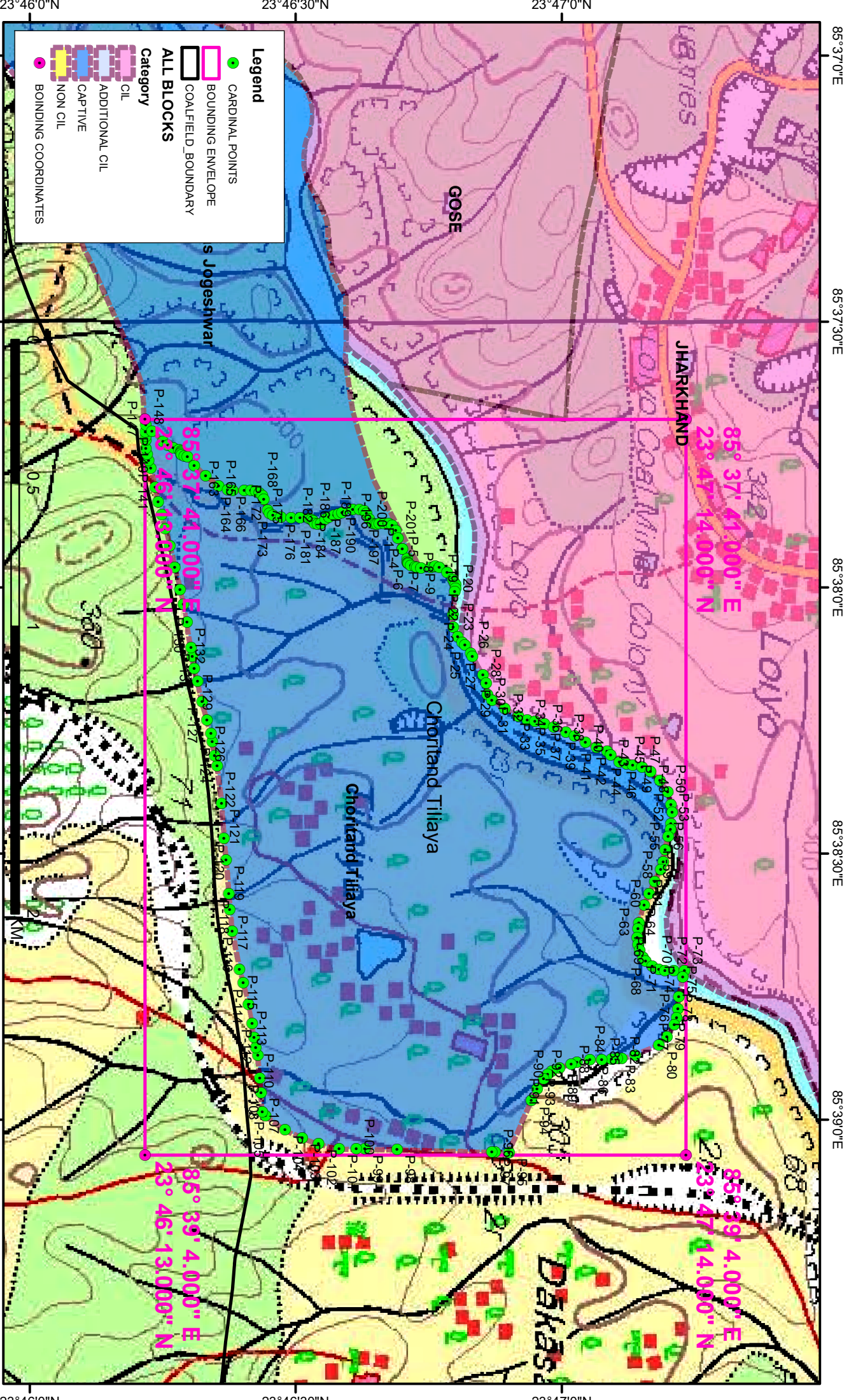
**Note:**

1. The above data is compiled from Geological Report, Mining Plan, Mine Closure Plan and the data furnished by the prior allottee in relevant Annexures, as available. For clarifications with regard to above data, please refer aforesaid source documents.
2. The boundary of the block has been taken from GR after conversion to WGS84 system by feature matching. The block boundary is provisional and the cardinal points, bounding co-ordinates are approximate.
3. There is a difference in area in the shape file and GR. Area in the shape file is based on feature mapped plan of the block as given in the GR. So, the area is tentative and field DGPS survey is required to ascertain the exact area.

**Disclaimer:**

1. The analysis is done on Beta-version (Trial Version) of Decision Support System (DSS) of FSI / MOEF.
2. The Decision Rules for various parameters of this DSS System are controlled by FSI.
3. CMPDI only runs this DSS to obtain the status of any block based on these Decision Rules.
4. The database of the Decision Rules is updated by FSI from time to time.
5. CMPDI does not own any responsibility for variation in the results which are based on the Decision Rules of the FSI DSS in case of any updation of the database at FSI end.
6. ESZ analysis and tiger habitat/ corridor given here is based on the information available in public domain. Bidders are encouraged to verify this information and any other information additionally available.

# Choritand Tiliaya Block, West Bokaro Coalfield



NOTE: Coordinates are provisional in WGS84 System

**Provisional Cardinal Points for Choritand Tiliaya Block**

POINT NO	Longitude (WGS84)	Latitude (WGS84)
P-1	85° 37' 55.590" E	23° 46' 42.000" N
P-2	85° 37' 56.678" E	23° 46' 42.526" N
P-3	85° 37' 57.017" E	23° 46' 42.548" N
P-4	85° 37' 57.185" E	23° 46' 42.576" N
P-5	85° 37' 57.232" E	23° 46' 42.633" N
P-6	85° 37' 57.280" E	23° 46' 42.694" N
P-7	85° 37' 57.476" E	23° 46' 42.965" N
P-8	85° 37' 57.647" E	23° 46' 43.464" N
P-9	85° 37' 57.707" E	23° 46' 43.638" N
P-10	85° 37' 57.758" E	23° 46' 44.103" N
P-11	85° 37' 57.686" E	23° 46' 45.200" N
P-12	85° 37' 57.615" E	23° 46' 45.602" N
P-13	85° 37' 57.596" E	23° 46' 45.711" N
P-14	85° 37' 57.725" E	23° 46' 46.195" N
P-15	85° 37' 58.296" E	23° 46' 47.043" N
P-16	85° 37' 59.037" E	23° 46' 47.686" N
P-17	85° 37' 59.432" E	23° 46' 47.881" N
P-18	85° 37' 59.663" E	23° 46' 47.995" N
P-19	85° 38' 0.055" E	23° 46' 48.014" N
P-20	85° 38' 0.437" E	23° 46' 47.922" N
P-21	85° 38' 3.019" E	23° 46' 47.670" N
P-22	85° 38' 4.458" E	23° 46' 47.751" N
P-23	85° 38' 5.532" E	23° 46' 48.222" N
P-24	85° 38' 6.173" E	23° 46' 48.736" N
P-25	85° 38' 6.472" E	23° 46' 49.045" N
P-26	85° 38' 7.428" E	23° 46' 49.698" N
P-27	85° 38' 7.782" E	23° 46' 49.897" N
P-28	85° 38' 9.826" E	23° 46' 51.084" N
P-29	85° 38' 10.775" E	23° 46' 51.437" N
P-30	85° 38' 12.101" E	23° 46' 51.603" N
P-31	85° 38' 12.713" E	23° 46' 52.108" N
P-32	85° 38' 13.670" E	23° 46' 53.561" N
P-33	85° 38' 14.495" E	23° 46' 55.065" N
P-34	85° 38' 14.952" E	23° 46' 56.067" N
P-35	85° 38' 15.074" E	23° 46' 56.946" N
P-36	85° 38' 15.362" E	23° 46' 57.998" N
P-37	85° 38' 15.725" E	23° 46' 59.067" N
P-38	85° 38' 16.308" E	23° 47' 0.466" N
P-39	85° 38' 16.728" E	23° 47' 1.416" N
P-40	85° 38' 17.407" E	23° 47' 2.661" N
P-41	85° 38' 17.992" E	23° 47' 3.905" N
P-42	85° 38' 18.429" E	23° 47' 5.078" N
P-43	85° 38' 18.817" E	23° 47' 5.477" N
P-44	85° 38' 19.648" E	23° 47' 6.465" N
P-45	85° 38' 19.864" E	23° 47' 7.276" N
P-46	85° 38' 19.969" E	23° 47' 7.982" N
P-47	85° 38' 20.276" E	23° 47' 9.017" N

**Provisional Cardinal Points for Choritand Tiliaya Block**

POINT NO	Longitude (WGS84)	Latitude (WGS84)
P-48	85° 38' 20.752" E	23° 47' 10.002" N
P-49	85° 38' 21.713" E	23° 47' 11.042" N
P-50	85° 38' 23.082" E	23° 47' 11.928" N
P-51	85° 38' 24.493" E	23° 47' 12.291" N
P-52	85° 38' 25.326" E	23° 47' 12.416" N
P-53	85° 38' 26.633" E	23° 47' 12.303" N
P-54	85° 38' 27.247" E	23° 47' 12.251" N
P-55	85° 38' 28.050" E	23° 47' 11.975" N
P-56	85° 38' 29.549" E	23° 47' 11.638" N
P-57	85° 38' 30.965" E	23° 47' 11.402" N
P-58	85° 38' 31.782" E	23° 47' 11.162" N
P-59	85° 38' 33.143" E	23° 47' 10.472" N
P-60	85° 38' 34.466" E	23° 47' 9.830" N
P-61	85° 38' 35.833" E	23° 47' 9.250" N
P-62	85° 38' 37.843" E	23° 47' 8.648" N
P-63	85° 38' 38.427" E	23° 47' 8.550" N
P-64	85° 38' 39.445" E	23° 47' 8.470" N
P-65	85° 38' 40.215" E	23° 47' 8.566" N
P-66	85° 38' 40.930" E	23° 47' 8.758" N
P-67	85° 38' 41.675" E	23° 47' 9.116" N
P-68	85° 38' 42.127" E	23° 47' 9.443" N
P-69	85° 38' 42.725" E	23° 47' 10.185" N
P-70	85° 38' 43.039" E	23° 47' 10.930" N
P-71	85° 38' 43.174" E	23° 47' 11.585" N
P-72	85° 38' 43.178" E	23° 47' 12.604" N
P-73	85° 38' 43.182" E	23° 47' 13.788" N
P-74	85° 38' 43.894" E	23° 47' 13.629" N
P-75	85° 38' 46.112" E	23° 47' 13.166" N
P-76	85° 38' 47.474" E	23° 47' 13.068" N
P-77	85° 38' 48.530" E	23° 47' 12.933" N
P-78	85° 38' 49.333" E	23° 47' 12.658" N
P-79	85° 38' 50.635" E	23° 47' 11.844" N
P-80	85° 38' 51.594" E	23° 47' 10.909" N
P-81	85° 38' 52.713" E	23° 47' 8.270" N
P-82	85° 38' 53.118" E	23° 47' 6.732" N
P-83	85° 38' 53.140" E	23° 47' 6.226" N
P-84	85° 38' 53.167" E	23° 47' 5.604" N
P-85	85° 38' 53.261" E	23° 47' 4.496" N
P-86	85° 38' 53.282" E	23° 47' 3.155" N
P-87	85° 38' 53.529" E	23° 47' 1.698" N
P-88	85° 38' 53.740" E	23° 47' 1.030" N
P-89	85° 38' 54.148" E	23° 46' 59.735" N
P-90	85° 38' 54.553" E	23° 46' 58.837" N
P-91	85° 38' 54.880" E	23° 46' 58.372" N
P-92	85° 38' 55.423" E	23° 46' 57.944" N
P-93	85° 38' 56.500" E	23° 46' 57.189" N
P-94	85° 38' 57.867" E	23° 46' 56.534" N

**Provisional Cardinal Points for Choritand Tiliaya Block**

POINT NO	Longitude (WGS84)	Latitude (WGS84)
P-95	85° 39' 3.666" E	23° 46' 54.024" N
P-96	85° 39' 3.648" E	23° 46' 52.446" N
P-97	85° 39' 3.644" E	23° 46' 52.105" N
P-98	85° 39' 3.336" E	23° 46' 41.403" N
P-99	85° 39' 3.314" E	23° 46' 37.783" N
P-100	85° 39' 3.331" E	23° 46' 36.820" N
P-101	85° 39' 3.273" E	23° 46' 34.882" N
P-102	85° 39' 2.698" E	23° 46' 32.553" N
P-103	85° 39' 2.052" E	23° 46' 30.708" N
P-104	85° 39' 1.137" E	23° 46' 28.797" N
P-105	85° 38' 59.547" E	23° 46' 26.590" N
P-106	85° 38' 59.107" E	23° 46' 26.220" N
P-107	85° 38' 56.912" E	23° 46' 26.072" N
P-108	85° 38' 55.336" E	23° 46' 25.951" N
P-109	85° 38' 52.745" E	23° 46' 25.713" N
P-110	85° 38' 51.871" E	23° 46' 25.469" N
P-111	85° 38' 50.751" E	23° 46' 25.287" N
P-112	85° 38' 49.118" E	23° 46' 25.047" N
P-113	85° 38' 47.031" E	23° 46' 24.641" N
P-114	85° 38' 44.607" E	23° 46' 24.050" N
P-115	85° 38' 43.010" E	23° 46' 23.660" N
P-116	85° 38' 38.696" E	23° 46' 22.816" N
P-117	85° 38' 36.269" E	23° 46' 22.526" N
P-118	85° 38' 34.529" E	23° 46' 22.424" N
P-119	85° 38' 30.735" E	23° 46' 22.122" N
P-120	85° 38' 28.261" E	23° 46' 21.896" N
P-121	85° 38' 24.315" E	23° 46' 21.603" N
P-122	85° 38' 20.103" E	23° 46' 21.093" N
P-123	85° 38' 18.960" E	23° 46' 20.857" N
P-124	85° 38' 17.362" E	23° 46' 20.585" N
P-125	85° 38' 16.429" E	23° 46' 20.437" N
P-126	85° 38' 14.892" E	23° 46' 19.983" N
P-127	85° 38' 12.841" E	23° 46' 19.427" N
P-128	85° 38' 10.580" E	23° 46' 18.934" N
P-129	85° 38' 9.088" E	23° 46' 18.555" N
P-130	85° 38' 7.759" E	23° 46' 18.317" N
P-131	85° 38' 6.720" E	23° 46' 18.190" N
P-132	85° 38' 3.873" E	23° 46' 17.696" N
P-133	85° 38' 1.923" E	23° 46' 17.326" N
P-134	85° 38' 0.207" E	23° 46' 16.924" N
P-135	85° 37' 57.737" E	23° 46' 16.343" N
P-136	85° 37' 55.303" E	23° 46' 15.788" N
P-137	85° 37' 53.318" E	23° 46' 15.263" N
P-138	85° 37' 51.770" E	23° 46' 14.879" N
P-139	85° 37' 50.326" E	23° 46' 14.462" N
P-140	85° 37' 48.675" E	23° 46' 14.129" N
P-141	85° 37' 46.521" E	23° 46' 13.654" N

**Provisional Cardinal Points for Choritand Tiliaya Block**

POINT NO	Longitude (WGS84)	Latitude (WGS84)
P-142	85° 37' 45.664" E	23° 46' 13.414" N
P-143	85° 37' 44.946" E	23° 46' 13.236" N
P-144	85° 37' 44.321" E	23° 46' 13.101" N
P-145	85° 37' 43.376" E	23° 46' 13.067" N
P-146	85° 37' 42.891" E	23° 46' 13.063" N
P-147	85° 37' 42.387" E	23° 46' 13.058" N
P-148	85° 37' 41.630" E	23° 46' 13.069" N
P-149	85° 37' 42.342" E	23° 46' 13.789" N
P-150	85° 37' 43.479" E	23° 46' 15.004" N
P-151	85° 37' 43.912" E	23° 46' 15.567" N
P-152	85° 37' 44.195" E	23° 46' 16.171" N
P-153	85° 37' 44.412" E	23° 46' 16.861" N
P-154	85° 37' 44.541" E	23° 46' 17.060" N
P-155	85° 37' 44.709" E	23° 46' 17.062" N
P-156	85° 37' 44.859" E	23° 46' 17.029" N
P-157	85° 37' 45.008" E	23° 46' 17.099" N
P-158	85° 37' 45.145" E	23° 46' 17.427" N
P-159	85° 37' 45.207" E	23° 46' 17.763" N
P-160	85° 37' 46.217" E	23° 46' 18.563" N
P-161	85° 37' 47.353" E	23° 46' 19.846" N
P-162	85° 37' 48.534" E	23° 46' 21.319" N
P-163	85° 37' 48.973" E	23° 46' 22.295" N
P-164	85° 37' 49.051" E	23° 46' 22.855" N
P-165	85° 37' 49.037" E	23° 46' 24.179" N
P-166	85° 37' 49.029" E	23° 46' 24.945" N
P-167	85° 37' 49.099" E	23° 46' 25.453" N
P-168	85° 37' 49.272" E	23° 46' 25.885" N
P-169	85° 37' 49.614" E	23° 46' 26.215" N
P-170	85° 37' 50.033" E	23° 46' 26.408" N
P-171	85° 37' 51.271" E	23° 46' 26.814" N
P-172	85° 37' 51.615" E	23° 46' 27.032" N
P-173	85° 37' 51.826" E	23° 46' 27.413" N
P-174	85° 37' 52.022" E	23° 46' 28.300" N
P-175	85° 37' 52.122" E	23° 46' 29.445" N
P-176	85° 37' 52.130" E	23° 46' 30.469" N
P-177	85° 37' 52.167" E	23° 46' 31.484" N
P-178	85° 37' 52.285" E	23° 46' 31.769" N
P-179	85° 37' 52.500" E	23° 46' 31.954" N
P-180	85° 37' 52.720" E	23° 46' 32.143" N
P-181	85° 37' 52.811" E	23° 46' 32.445" N
P-182	85° 37' 52.723" E	23° 46' 32.823" N
P-183	85° 37' 52.260" E	23° 46' 33.309" N
P-184	85° 37' 52.050" E	23° 46' 33.737" N
P-185	85° 37' 51.847" E	23° 46' 34.306" N
P-186	85° 37' 51.674" E	23° 46' 34.792" N
P-187	85° 37' 51.511" E	23° 46' 35.212" N
P-188	85° 37' 51.143" E	23° 46' 36.396" N



**Provisional Cardinal Points for Choritand Tiliaya Block**

POINT NO	Longitude (WGS84)	Latitude (WGS84)
P-189	85° 37' 51.182" E	23° 46' 37.187" N
P-190	85° 37' 51.363" E	23° 46' 37.696" N
P-191	85° 37' 51.603" E	23° 46' 37.957" N
P-192	85° 37' 52.264" E	23° 46' 38.281" N
P-193	85° 37' 52.773" E	23° 46' 38.698" N
P-194	85° 37' 52.864" E	23° 46' 38.948" N
P-195	85° 37' 52.853" E	23° 46' 39.163" N
P-196	85° 37' 52.775" E	23° 46' 39.421" N
P-197	85° 37' 52.723" E	23° 46' 39.945" N
P-198	85° 37' 52.746" E	23° 46' 40.444" N
P-199	85° 37' 52.966" E	23° 46' 40.833" N
P-200	85° 37' 53.532" E	23° 46' 41.242" N
P-201	85° 37' 54.371" E	23° 46' 41.491" N