

Burapahar Block Summary
PART A

Sr. No.	Features	Details
1.	Location	
	Coal Block	Burapahar Block
	Latitude	22° 3' 40" N-22° 5' 9" N (Provisional)
	Longitude	83° 34' 52" E-83° 37' 26" E (Provisional)
	Topo Sheet No.	F44L12
	Coalfield	Ib Valley Coalfield
	Villages	Jharpalam, part of Bhograkachhar and Rengalpani
	Tehsil/Taluka	Hemagiri
	District	Sundargarh
	State	Odisha
2.	Connectivity with Block	
	Nearest Rail Head	Kanika Railway Station
	Road	Raigarh-Sundargarh Road
	Airport	Jharsuguda
3.	Area	
	Geological Block Area	6.06 sq km (As per shape file. Refer note below)
	Forest Area	2.21 sq km (As per FSI map)
	Non-Forest Area	3.85 sq km
4.	Climate and Topography	
	Average Annual Rainfall	1500mm average rainfall
	Temperature (Min. — Max.)	9°C to 47°C
	Local Surface Drainage Channels	Undulating terrain, drainage of the area is controlled by Khurusalega Nala, Aibaljhor nala and Barajharia Nala.
	Rivers	
5.	Exploration	
	Status	Explored
	Exploration Agency	CMPDI
	Total Number of Boreholes with meterage	57 boreholes & 16894m

	Borehole Density	8.25 boreholes per sq km			
	General Dip of Seams	Southwest			
	General Strike Direction	Northwest to southeast			
	Faults	2 no of faults			
6.	Coal Seams & Reserve				
	Coal Seams	Thickness Range (m)	Depth Range (m)	Resources (mt)	Grade
	PARKHANI	0.17 - 2.27	10.75 - 99.99	0.870	G12-G14
	LAJKURA- IV	3.14 - 6.28	51 - 192.33	51.908	G13-G15
	LAJKURA IV BOT	0.56 - 3	59.87 - 198.17	6.365	G11-G15
	LAJKURA -III	0.39 - 1.87	71 - 208.82	3.767	G12-G15
	LAJKURA II TOP 3	0.18 - 2.21	83 - 217.82	10.770	G10-G13
	LAJKURA II TOP 2	0.15 - 0.89	88.35 - 225.26	0.000	
	LAJKURA II TOP 1	12.15 - 17.7	96.53 - 218	21.978	G11-G13
	LAJKURA II TOP 1 TOP	0.62 - 11.47	112.89 - 253.35	74.391	G19-G13
	LAJKURA II TOP 1 BOT	1.21 - 9.03	123.71 - 259.59	40.682	G11-G16
	LAJKURA II BOT	3.2 - 9.92	115.76 - 269.44	67.800	G12-G16
	LAJKURA I	3.52 - 8.3	122.93 - 275.26	47.004	G11-G14
	LOCAL 1	0.2 - 2.26	159.43 - 308.07	1.843	G13-G15
	RAMPUR V TOP	0.52 - 1.48	220.04 - 309.85	2.395	G12 & G16
	RAMPUR V BOT	1.53 - 2.77	222.29 - 313.45	0.765	G9-G13
	RAMPUR V	0.26 - 5.53	205.7 - 302.4	32.417	G11-G16
	RAMPUR IV	0.38 - 2.44	216.55 - 322.39	13.388	G13-G16
	RAMPUR III TOP	0.53 - 2.7	248.15 - 353.66	16.245	G11-G16
	RAMPUR III BOT	0.3 - 4.88	251.55 - 358.12	19.913	G10-G16
	RAMPUR I & II	0.85 - 8.35	283.2 - 383.4	31.145	G7-G13
	IB TOP	3.46 - 9.43	329.5 - 438.33	73.686	G7-G14
	IB BOT	0.65 - 4.5	340.09 - 444.32	30.558	G11
	Total			547.889	
7.	Surface Constraints	Undulating terrain			
8.	Grade of coal	G12 (Provisional) based on weighted average grade as per grade-wise data available in Draft GR.			
9.	Decision Support System (DSS) Analysis	Wildlife info: The polygon touches Wildlife Habitat(s), Sloth Bear			
10.	Eco Sensitive Zone (ESZ)	Southern boundary of the block is approx. 35 km from the boundary of ESZ of Debrigarh. SE boundary of the block is approx. 45 km from the boundary of ESZ of Sambalpur Elephant Region and NW boundary of the block is approx. 50 km from the boundary of buffer zone of unnotified Lemru Elephant Reserve.			

Note:

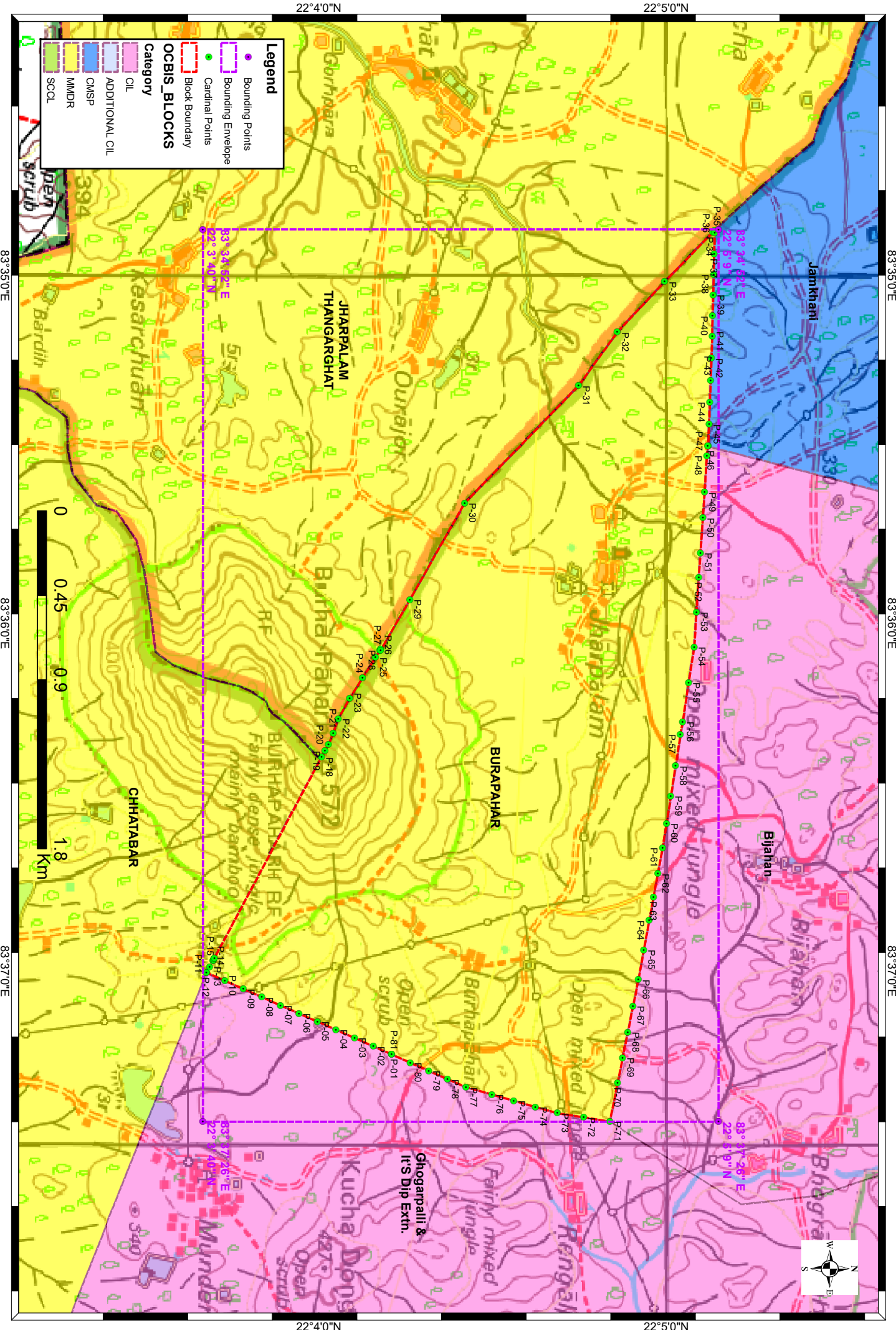
1. Above summary is compiled from “Draft Geological Report on Coal Exploration Burapahar Block Ib Valley Coalfield District-Sundargarh (Odisha) Spetember-2020” By CMPDIL.

Disclaimer:

1. The analysis is done on Beta-version (Trial Version) of Decision Support System (DSS) of FSI / MOEF.
2. The Decision Rules for various parameters of this DSS System are controlled by FSI.
3. CMPDI only runs this DSS to obtain the status of any block based on these Decision Rules.
4. The database of the Decision Rules is updated by FSI from time to time.
5. CMPDI does not own any responsibility for variation in the results which are based on the Decision Rules of the FSI DSS in case of any updation of the database at FSI end.
6. ESZ analysis and tiger habitat/ corridor given here is based on the information available in public domain. Bidders are encouraged to verify this information and any other information additionally available.

Burapahar Block, Ib Valley Coalfield

FOR INTERNAL/RESTRICTED USE ONLY



22°4'0"N

22°5'0"N

83°35'0"E

83°35'0"E

83°36'0"E

83°36'0"E

83°37'0"E

83°37'0"E

22°4'0"N

22°5'0"N

Provisional Cardinal Points for BURAPAHAR Block

POINT NO	Longitude (WGS84)	Latitude (WGS84)
P-1	83° 37' 14.407" E	22° 4' 12.594" N
P-2	83° 37' 12.993" E	22° 4' 9.391" N
P-3	83° 37' 11.579" E	22° 4' 6.188" N
P-4	83° 37' 10.164" E	22° 4' 2.985" N
P-5	83° 37' 8.750" E	22° 3' 59.782" N
P-6	83° 37' 7.336" E	22° 3' 56.579" N
P-7	83° 37' 5.921" E	22° 3' 53.375" N
P-8	83° 37' 4.507" E	22° 3' 50.172" N
P-9	83° 37' 3.093" E	22° 3' 46.969" N
P-10	83° 37' 1.679" E	22° 3' 43.766" N
P-11	83° 37' 0.302" E	22° 3' 40.647" N
P-12	83° 37' 0.265" E	22° 3' 40.563" N
P-13	83° 36' 59.273" E	22° 3' 41.138" N
P-14	83° 36' 58.232" E	22° 3' 41.743" N
P-15	83° 36' 58.130" E	22° 3' 41.804" N
P-16	83° 36' 57.939" E	22° 3' 41.906" N
P-17	83° 36' 57.759" E	22° 3' 42.002" N
P-18	83° 36' 23.035" E	22° 4' 0.501" N
P-19	83° 36' 21.987" E	22° 4' 1.079" N
P-20	83° 36' 20.932" E	22° 4' 1.661" N
P-21	83° 36' 18.944" E	22° 4' 2.496" N
P-22	83° 36' 16.479" E	22° 4' 3.359" N
P-23	83° 36' 12.919" E	22° 4' 5.337" N
P-24	83° 36' 9.391" E	22° 4' 7.571" N
P-25	83° 36' 5.862" E	22° 4' 9.806" N
P-26	83° 36' 4.583" E	22° 4' 10.592" N
P-27	83° 36' 4.475" E	22° 4' 10.658" N
P-28	83° 36' 4.668" E	22° 4' 10.655" N
P-29	83° 35' 55.900" E	22° 4' 15.731" N
P-30	83° 35' 39.220" E	22° 4' 25.183" N
P-31	83° 35' 18.975" E	22° 4' 44.860" N
P-32	83° 35' 9.692" E	22° 4' 51.554" N
P-33	83° 35' 1.012" E	22° 4' 59.728" N
P-34	83° 34' 52.493" E	22° 5' 8.034" N
P-35	83° 34' 52.176" E	22° 5' 8.372" N
P-36	83° 34' 52.636" E	22° 5' 8.360" N
P-37	83° 34' 56.199" E	22° 5' 8.274" N
P-38	83° 34' 59.763" E	22° 5' 8.187" N
P-39	83° 35' 3.326" E	22° 5' 8.101" N
P-40	83° 35' 6.889" E	22° 5' 8.014" N
P-41	83° 35' 10.452" E	22° 5' 7.927" N
P-42	83° 35' 14.252" E	22° 5' 7.793" N
P-43	83° 35' 18.052" E	22° 5' 7.659" N
P-44	83° 35' 21.852" E	22° 5' 7.524" N
P-45	83° 35' 25.652" E	22° 5' 7.390" N
P-46	83° 35' 29.382" E	22° 5' 7.258" N
P-47	83° 35' 29.366" E	22° 5' 7.170" N

Provisional Cardinal Points for BURAPAHAR Block

POINT NO	Longitude (WGS84)	Latitude (WGS84)
P-48	83° 35' 31.064" E	22° 5' 7.003" N
P-49	83° 35' 37.377" E	22° 5' 6.604" N
P-50	83° 35' 41.746" E	22° 5' 6.313" N
P-51	83° 35' 47.858" E	22° 5' 5.894" N
P-52	83° 35' 52.072" E	22° 5' 5.615" N
P-53	83° 35' 58.083" E	22° 5' 5.206" N
P-54	83° 36' 4.050" E	22° 5' 4.830" N
P-55	83° 36' 10.243" E	22° 5' 3.864" N
P-56	83° 36' 17.032" E	22° 5' 2.811" N
P-57	83° 36' 19.182" E	22° 5' 2.463" N
P-58	83° 36' 24.585" E	22° 5' 1.597" N
P-59	83° 36' 29.840" E	22° 5' 0.792" N
P-60	83° 36' 34.553" E	22° 5' 0.054" N
P-61	83° 36' 38.741" E	22° 4' 59.373" N
P-62	83° 36' 43.185" E	22° 4' 58.539" N
P-63	83° 36' 47.223" E	22° 4' 57.797" N
P-64	83° 36' 51.261" E	22° 4' 57.056" N
P-65	83° 36' 56.365" E	22° 4' 56.121" N
P-66	83° 37' 1.469" E	22° 4' 55.187" N
P-67	83° 37' 6.038" E	22° 4' 54.269" N
P-68	83° 37' 10.608" E	22° 4' 53.351" N
P-69	83° 37' 14.951" E	22° 4' 52.476" N
P-70	83° 37' 19.295" E	22° 4' 51.602" N
P-71	83° 37' 25.980" E	22° 4' 50.243" N
P-72	83° 37' 25.257" E	22° 4' 45.715" N
P-73	83° 37' 24.533" E	22° 4' 41.187" N
P-74	83° 37' 23.458" E	22° 4' 37.430" N
P-75	83° 37' 22.383" E	22° 4' 33.674" N
P-76	83° 37' 21.307" E	22° 4' 29.917" N
P-77	83° 37' 20.065" E	22° 4' 25.406" N
P-78	83° 37' 18.651" E	22° 4' 22.203" N
P-79	83° 37' 17.236" E	22° 4' 19.000" N
P-80	83° 37' 15.822" E	22° 4' 15.797" N