

# BRINDA COAL BLOCK SUMMARY

## PART A

### 1. BRINDA

Sr. No.	Features	Details
<b>1.</b>	<b>Location</b>	
	Coal Block	Brinda
	Latitude	23° 54' 30" N-23° 56' 27" N (Provisional)
	Longitude	84° 59' 43" E-85° 1' 49" E (Provisional)
	Topo Sheet No.	73 A/13
	Coalfield	North Karanpura
	Villages	Brinda, Katahi Misraul, Kishunpur, Serangdag, Madhwapur, Kasidih, Sirsai
	Tehsil/Taluka	Tandwa
	District	Chatra
	State	Jharkhand
<b>2.</b>	<b>Connectivity with Block</b>	
	Nearest Rail Head	The nearest railhead is Ray Station at a distance of about 38 km from the block on Barkakana-Dehri-on-Sone loop line of the North-Eastern Railways. Tori is another nearby railway station located south-west of the block at a crow fly distance of about 52 km.
	Road	The metalled road connecting Tandwa with Hazaribagh via Semaria passes through the block in the eastern part but the block remains cut off during rainy season from Tandwa side. Another metalled road connects Tandwa with Hazaribagh (50Km) via Barkagaon. Tandwa is also connected to Ranchi (92 Km) via Khalari (28 Km). A fair weather kutcha road connecting Tandwa village with Balumath also runs about 6 km south of the block.
	Airport	
<b>3.</b>	<b>Area</b>	
	Geological Block Area	8.71 sq.km. (As per shape file. Refer Note No. 3 below)
	Forest Area	Approx 7% (As per FSI plan)
	Non-Forest Area	Approx. 93% (As per FSI plan)
<b>4.</b>	<b>Climate and Topography</b>	
	Average Annual Rainfall	1011 mm
	Temperature (Min. — Max.)	1°C-45°C

	Local Surface Drainage Channels	The drainage of the block is controlled by Barki river flowing roughly north to south along the eastern boundary of the block. This river takes almost east-west trend in the northern part of the block. There are two prominent nalas Lachchankundih and Hodhodwa flowing roughly west to east in the northern part of the property and discharge their load into Barki river.			
	Rivers	Barki River			
<b>5.</b>	<b>Exploration</b>				
	Status	Explored			
	Exploration Agency	CMPDIL			
	Total Number of Boreholes with meterage	70 Boreholes, 6449.30m			
	Borehole Density	Approx. 8 Boreholes/sq.km.			
	General Dip of Seams	Southerly dip of 4°-10°			
	General Strike Direction	Strike is roughly E-W			
	Faults	7 Faults, throw ranging between 20-178m			
<b>6.</b>	<b>Coal Seams &amp; Reserve</b>				
	Coal Seams	Thickness Range (m)	Depth Range (m)	Geological Reserve (MT) (Proved)	Grade
	II Top	1.42		0.335	G
	II Bot	4.26-5.45		2.177	F-G
	I Top+Mid	8.43-14.20		8.1	F-G
	I Bot	4.11-11.22		6.295	E-G
	K5	0.45-3.08		5.474	B-D
	Local	0.05-0.73			
	K4	0.04-0.70			
	K3	0.10-2.01		4.521	A-B
	K2	0.26-2.40		7.811	A-D
	K1	0.05-1.00			E-F
		<b>Total</b>		<b>34.713</b>	
<b>7.</b>	<b>Surface Constraints</b>	-			
<b>8.</b>	<b>Grade of the block</b>	G8 (Provisional) based on weighted average grade as per grade-wise data available in GR.			
<b>9.</b>	<b>Decision Support System (DSS) Analysis</b>	Hydrology Info: Polygon touches Barki Nadi			
<b>10.</b>	<b>Eco Sensitive Zone (ESZ) Analysis</b>	NW boundary of the block is approx. 18.48 km from the boundary of ESZ of Lawalong and NE boundary is approx. 21.43 km from the boundary of ESZ of Hazaribagh.			

## 2. SASAI

Sr. No.	Features	Details
<b>1.</b>	<b>Location</b>	
	Coal Block	Sasai
	Latitude	23° 54' 21" N-23° 56' 28" N (Provisional)
	Longitude	85° 0' 26" E-85° 3' 18" E (Provisional)
	Topo Sheet No.	73 E/1
	Coalfield	North Karanpura
	Villages	Sirsai, Porra, Gopda, Nawa Khap, Chatti
	Tehsil/Taluka	Tandwa, Keredari
	District	Chatra, Hazaribagh
	State	Jharkhand
<b>2.</b>	<b>Connectivity with Block</b>	
	Nearest Rail Head	The nearest railhead is Ray Station (40 Km) on Barkakana-Dehri-On-Sone loopline of the Eastern Railways.
	Road	The block is connected with Ranchi (100 Km), and Hazaribagh (75 Km) via Tandwa (15 Km) through black top road but is inaccessible for heavy vehicles during monsoon season for want of bridge over the Barki River between Brinda and Sisai blocks.
	Airport	
<b>3.</b>	<b>Area</b>	
	Geological Block Area	11.03 sq.km. (As per shape file. Refer Note No. 3 below)
	Forest Area	Approx. 17% (As per FSI plan)
	Non-Forest Area	Approx. 83% (As per FSI plan)
<b>4.</b>	<b>Climate and Topography</b>	
	Average Annual Rainfall	1011 mm
	Temperature (Min. — Max.)	1°C-45°C
	Local Surface Drainage Channels	The drainage of the block is controlled by Barki river flowing roughly north to south along the eastern boundary of the block. This river takes almost east-west trend in the northern part of the block. There are two prominent nalas Lachchandkundih and Hodhodwa flowing roughly west to east in the northern part of the property and discharge their load into Barki river
	Rivers	Barki River
<b>5.</b>	<b>Exploration</b>	

	Status	Explored			
	Exploration Agency	CMPDIL			
	Total Number of Boreholes with meterage	59 Boreholes, 5214.00 m			
	Borehole Density	Approx. 8 Boreholes/sq.km.			
	General Dip of Seams	Southerly dip of 6°-9°			
	General Strike Direction	Strike is roughly E-W with swing to NW-SE in the west-central part.			
	Faults	10 Faults, throw ranging between less than 5 m to 100 m			
<b>6.</b>	<b>Coal Seams &amp; Reserve</b>				
	Coal Seams	Thickness Range (m)	Depth Range (m)	Geological Reserve (MT) (Proved)	Grade
	I Top+Mid	7.11	6.00-17.06		
	I Bot	3.72-4.48	7.50-29.48		
	K5	0.44-3.46	6.50-70.03	13.087	G4-G12 (B-F)
	K4	0.10-0.34	29.11-55.76		
	K3	0.29-3.72	9.15-81.72	5.424	G1-G12 (A-F)
	K2	0.08-2.49	7.50-88.50	7.832	G1-G14 (A-G)
	K1	0.10-1.02	18.22-96.59		
				<b>26.343</b>	
<b>7.</b>	<b>Surface Constraints</b>				
<b>8.</b>	<b>Grade of the block</b>				
	G5 (Provisional) based on weighted average grade as per data available in GR.				
<b>9.</b>	<b>Decision Support System (DSS) Analysis</b>				
	Hydrology Info: Polygon touches Barki Nadi				
<b>10.</b>	<b>Eco Sensitive Zone (ESZ) Analysis</b>				
	NW boundary of the block is approx. 19 km from the boundary of ESZ of Lawalong and NE boundary is approx. 17 km from the boundary of ESZ of Hazaribagh.				

#### PART B

Sr. No.	Features	Details
<b>1.</b>	<b>Previous Allocation</b>	
	Name and Address of Allocatee	<i>M/S Abhijeet Infrastructure Ltd., 178-A, Light Industrial Area, Bhilai-490026, Chhattisgarh</i>
<b>2.</b>	<b>Target Capacity as per Mining Plan</b>	<b>0.68 MTPA (0.50 from OC &amp; 0.18 from UG)</b>
<b>3.</b>	<b>Status of Clearances/Approvals</b>	

	Mining Plan/ Mine Closure Plan	Mining Plan approved via: No. 47011/1(20)/2000-CPAM/CA-I Dated 28.9.2006. Mine Closure Plan approval letter not available.
	Forest Clearance	FC for 49.07 Ha Via: F. No. 8-77/2010-FC Dated: 11.02.2011
	Environmental Clearance	EC obtained via: J-11015/2379/2006-IA.II(M) Dated: 17.05.2007
	Mining Lease	1377.62 Ha (As per Mining Plan)
	Land Acquisition	218.815 Acre(88.55 Ha) private Land within the Block and 132.69 Acre(53.70Ha) CA land (as per Annexure-II submitted by the Prior Allottee)
	No. of PAPs as per Mining Plan	45 families as per Land Schedule. (as per Annexure - II submitted by the prior allottee)
<b>4.</b>	Surface Infrastructure already built, if any.	As per Annexure-II submitted by the Prior Allottee: CHP : Part Civil Work Done Electrical P&M : Diesel Generator Purchased Workshop & Stores: Planned & P&M ordered

**Note:**

1. The above data is compiled from Geological Report, Mining Plan and the data furnished by the prior allottee in Annexure-I/II, as available. For clarifications with regard to above data, please refer aforesaid source documents.
2. The boundary of the block has been taken from GR after conversion to WGS84 system by feature matching. The block boundary is provisional and the cardinal points, bounding co-ordinates are approximate.
3. There is a difference in area in the shape file and GR. Area in the shape file is based on feature mapped plan of the block as given in the GR. So, the area is tentative and field DGPS survey is required to ascertain the exact area.

**Disclaimer:**

1. The analysis is done on Beta-version (Trial Version) of Decision Support System (DSS) of FSI / MOEF.
2. The Decision Rules for various parameters of this DSS System are controlled by FSI.
3. CMPDI only runs this DSS to obtain the status of any block based on these Decision Rules.
4. The database of the Decision Rules is updated by FSI from time to time.
5. CMPDI does not own any responsibility for variation in the results which are based on the Decision Rules of the FSI DSS in case of any updation of the database at FSI end.
6. ESZ analysis and tiger habitat/ corridor given here is based on the information available in public domain. Bidders are encouraged to verify this information and any other information additionally available.

84°59'0"E 85°00"E 85°10"E 85°20"E

Brinda Block, North Karanpura Coalfield

FOR INTERNAL/RESTRICTED USE ONLY

23°55'0"N

23°56'0"N

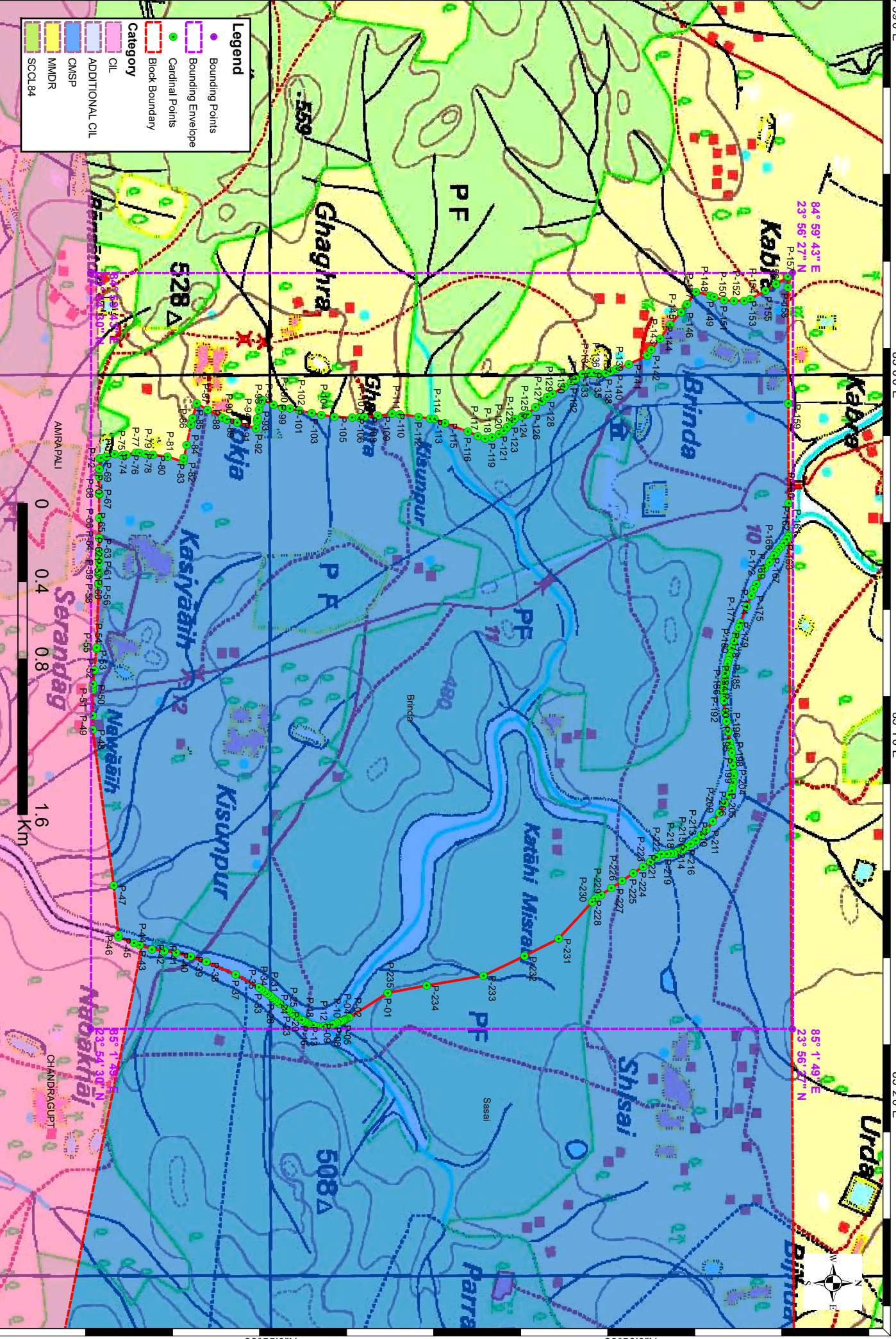
23°55'0"N

23°56'0"N

84°59'0"E 85°00"E 85°10"E 85°20"E

**Legend**

- Bounding Points
- Bounding Envelope
- Cardinal Points
- Category
- Block Boundary
- CIL
- ADDITIONAL CIL
- CMSP
- MMDR
- SCCI.84



23°54'0"N

23°55'0"N

23°56'0"N

85°0'0"E

85°10'E

85°20'E

85°30'E

### Sisai Block, North Karanpura Coalfield

FOR INTERNAL/RESTRICTED USE ONLY

**Legend**

- Bounding Points
- Sisai\_RoundedBoundingEnvelope
- Cardinal points
- Block Boundary

**Category**

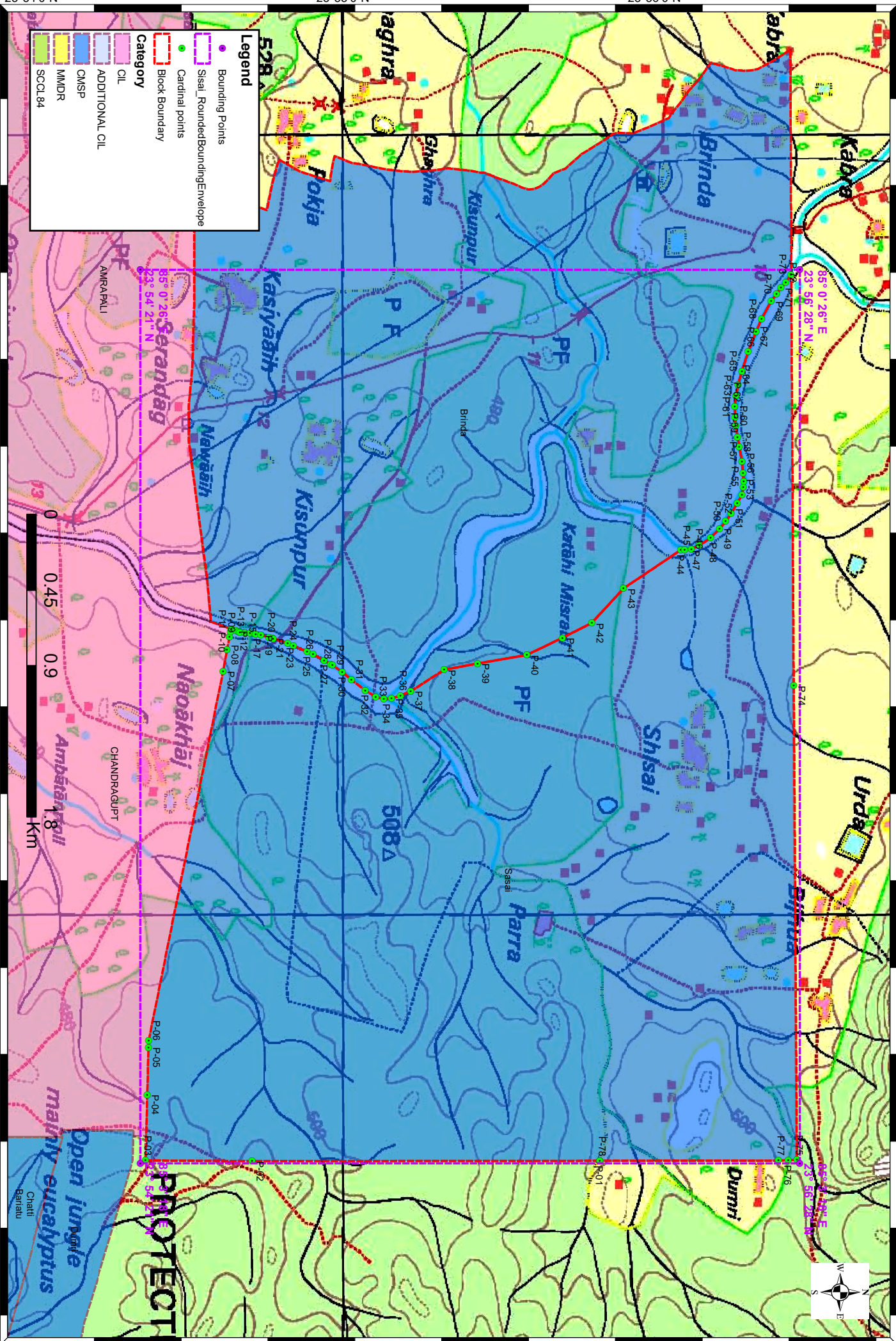
- CIL
- ADDITIONAL CIL
- CMSP
- MMDR
- SCCI.84

85°0'0"E

85°10'E

85°20'E

85°30'E



23°54'0"N

23°55'0"N

23°56'0"N

### Provisional cardinal points of Brinda Block

Point ID	Longitude	Latitude
P-01	85° 1' 42.967" E	23° 55' 19.505" N
P-02	85° 1' 47.095" E	23° 55' 13.053" N
P-03	85° 1' 47.294" E	23° 55' 12.592" N
P-04	85° 1' 47.398" E	23° 55' 12.352" N
P-05	85° 1' 47.411" E	23° 55' 12.321" N
P-06	85° 1' 47.464" E	23° 55' 12.198" N
P-07	85° 1' 47.555" E	23° 55' 11.989" N
P-08	85° 1' 47.717" E	23° 55' 11.613" N
P-09	85° 1' 47.976" E	23° 55' 10.980" N
P-10	85° 1' 48.091" E	23° 55' 10.638" N
P-11	85° 1' 48.229" E	23° 55' 10.225" N
P-12	85° 1' 48.518" E	23° 55' 9.360" N
P-13	85° 1' 48.551" E	23° 55' 8.735" N
P-14	85° 1' 48.596" E	23° 55' 7.878" N
P-15	85° 1' 48.476" E	23° 55' 7.440" N
P-16	85° 1' 48.379" E	23° 55' 7.087" N
P-17	85° 1' 48.162" E	23° 55' 6.298" N
P-18	85° 1' 48.045" E	23° 55' 6.109" N
P-19	85° 1' 47.872" E	23° 55' 5.830" N
P-20	85° 1' 47.746" E	23° 55' 5.626" N
P-21	85° 1' 47.466" E	23° 55' 5.172" N
P-22	85° 1' 47.012" E	23° 55' 4.438" N
P-23	85° 1' 46.831" E	23° 55' 4.173" N
P-24	85° 1' 46.555" E	23° 55' 3.804" N
P-25	85° 1' 46.240" E	23° 55' 3.383" N
P-26	85° 1' 45.926" E	23° 55' 2.963" N
P-27	85° 1' 45.620" E	23° 55' 2.554" N
P-28	85° 1' 44.799" E	23° 55' 1.477" N
P-29	85° 1' 44.377" E	23° 55' 0.988" N
P-30	85° 1' 44.063" E	23° 55' 0.622" N
P-31	85° 1' 43.748" E	23° 55' 0.256" N
P-32	85° 1' 43.441" E	23° 54' 59.900" N
P-33	85° 1' 43.084" E	23° 54' 59.410" N
P-34	85° 1' 42.742" E	23° 54' 58.940" N
P-35	85° 1' 42.392" E	23° 54' 58.459" N
P-36	85° 1' 42.060" E	23° 54' 58.003" N
P-37	85° 1' 39.948" E	23° 54' 54.157" N
P-38	85° 1' 37.815" E	23° 54' 49.245" N
P-39	85° 1' 36.957" E	23° 54' 46.586" N
P-40	85° 1' 36.283" E	23° 54' 44.169" N
P-41	85° 1' 35.938" E	23° 54' 42.238" N
P-42	85° 1' 35.707" E	23° 54' 40.171" N
P-43	85° 1' 35.027" E	23° 54' 38.154" N
P-44	85° 1' 34.663" E	23° 54' 37.169" N
P-45	85° 1' 33.735" E	23° 54' 34.586" N
P-46	85° 1' 33.295" E	23° 54' 34.546" N
P-47	85° 1' 25.042" E	23° 54' 33.796" N
P-48	85° 0' 59.052" E	23° 54' 30.290" N
P-49	85° 0' 56.744" E	23° 54' 30.291" N
P-50	85° 0' 52.455" E	23° 54' 30.292" N



### Provisional cardinal points of Brinda Block

Point ID	Longitude	Latitude
P-51	85° 0' 52.105" E	23° 54' 30.293" N
P-52	85° 0' 51.467" E	23° 54' 30.350" N
P-53	85° 0' 49.134" E	23° 54' 30.574" N
P-54	85° 0' 45.609" E	23° 54' 30.906" N
P-55	85° 0' 45.422" E	23° 54' 30.930" N
P-56	85° 0' 34.964" E	23° 54' 31.265" N
P-57	85° 0' 34.785" E	23° 54' 31.271" N
P-58	85° 0' 34.762" E	23° 54' 31.272" N
P-59	85° 0' 33.301" E	23° 54' 31.319" N
P-60	85° 0' 33.181" E	23° 54' 31.323" N
P-61	85° 0' 32.622" E	23° 54' 31.341" N
P-62	85° 0' 31.303" E	23° 54' 31.349" N
P-63	85° 0' 30.601" E	23° 54' 31.359" N
P-64	85° 0' 29.384" E	23° 54' 31.361" N
P-65	85° 0' 27.150" E	23° 54' 31.363" N
P-66	85° 0' 23.840" E	23° 54' 31.365" N
P-67	85° 0' 19.852" E	23° 54' 31.370" N
P-68	85° 0' 19.758" E	23° 54' 31.368" N
P-69	85° 0' 16.997" E	23° 54' 31.370" N
P-70	85° 0' 15.652" E	23° 54' 31.408" N
P-71	85° 0' 13.965" E	23° 54' 31.474" N
P-72	85° 0' 13.780" E	23° 54' 31.640" N
P-73	85° 0' 13.536" E	23° 54' 32.628" N
P-74	85° 0' 13.213" E	23° 54' 33.934" N
P-75	85° 0' 13.419" E	23° 54' 35.198" N
P-76	85° 0' 13.270" E	23° 54' 35.890" N
P-77	85° 0' 12.923" E	23° 54' 37.509" N
P-78	85° 0' 13.000" E	23° 54' 38.094" N
P-79	85° 0' 13.142" E	23° 54' 39.175" N
P-80	85° 0' 13.300" E	23° 54' 40.375" N
P-81	85° 0' 13.615" E	23° 54' 42.771" N
P-82	85° 0' 14.473" E	23° 54' 45.369" N
P-83	85° 0' 13.872" E	23° 54' 45.490" N
P-84	85° 0' 11.643" E	23° 54' 45.937" N
P-85	85° 0' 8.301" E	23° 54' 46.668" N
P-86	85° 0' 7.241" E	23° 54' 46.944" N
P-87	85° 0' 4.764" E	23° 54' 47.665" N
P-88	85° 0' 5.760" E	23° 54' 49.441" N
P-89	85° 0' 7.115" E	23° 54' 51.857" N
P-90	85° 0' 7.362" E	23° 54' 52.636" N
P-91	85° 0' 7.914" E	23° 54' 54.371" N
P-92	85° 0' 8.922" E	23° 54' 57.545" N
P-93	85° 0' 7.709" E	23° 54' 57.678" N
P-94	85° 0' 7.199" E	23° 54' 57.766" N
P-95	85° 0' 5.769" E	23° 54' 58.013" N
P-96	85° 0' 4.771" E	23° 54' 58.241" N
P-97	85° 0' 4.121" E	23° 54' 58.390" N
P-98	85° 0' 4.200" E	23° 54' 58.596" N
P-99	85° 0' 4.905" E	23° 55' 0.452" N
P-100	85° 0' 5.441" E	23° 55' 1.864" N

### Provisional cardinal points of Brinda Block

Point ID	Longitude	Latitude
P-101	85° 0' 5.629" E	23° 55' 3.192" N
P-102	85° 0' 5.899" E	23° 55' 4.716" N
P-103	85° 0' 6.364" E	23° 55' 6.807" N
P-104	85° 0' 6.671" E	23° 55' 8.397" N
P-105	85° 0' 6.930" E	23° 55' 10.569" N
P-106	85° 0' 7.138" E	23° 55' 13.516" N
P-107	85° 0' 7.022" E	23° 55' 14.689" N
P-108	85° 0' 6.932" E	23° 55' 15.603" N
P-109	85° 0' 6.806" E	23° 55' 17.853" N
P-110	85° 0' 6.419" E	23° 55' 20.231" N
P-111	85° 0' 6.591" E	23° 55' 21.452" N
P-112	85° 0' 6.927" E	23° 55' 24.592" N
P-113	85° 0' 7.317" E	23° 55' 26.532" N
P-114	85° 0' 7.290" E	23° 55' 27.272" N
P-115	85° 0' 8.042" E	23° 55' 29.029" N
P-116	85° 0' 9.420" E	23° 55' 32.821" N
P-117	85° 0' 10.123" E	23° 55' 34.463" N
P-118	85° 0' 10.539" E	23° 55' 35.685" N
P-119	85° 0' 10.401" E	23° 55' 36.838" N
P-120	85° 0' 9.903" E	23° 55' 37.999" N
P-121	85° 0' 9.320" E	23° 55' 38.831" N
P-122	85° 0' 8.676" E	23° 55' 39.417" N
P-123	85° 0' 7.804" E	23° 55' 40.209" N
P-124	85° 0' 7.343" E	23° 55' 40.655" N
P-125	85° 0' 6.846" E	23° 55' 41.869" N
P-126	85° 0' 6.526" E	23° 55' 42.831" N
P-127	85° 0' 5.330" E	23° 55' 44.113" N
P-128	85° 0' 4.377" E	23° 55' 45.210" N
P-129	85° 0' 3.677" E	23° 55' 46.016" N
P-130	85° 0' 3.096" E	23° 55' 46.965" N
P-131	85° 0' 1.927" E	23° 55' 48.873" N
P-132	85° 0' 1.238" E	23° 55' 49.998" N
P-133	85° 0' 0.626" E	23° 55' 50.842" N
P-134	84° 59' 59.817" E	23° 55' 51.957" N
P-135	84° 59' 59.603" E	23° 55' 53.094" N
P-136	84° 59' 59.649" E	23° 55' 53.806" N
P-137	84° 59' 59.704" E	23° 55' 54.659" N
P-138	84° 59' 59.700" E	23° 55' 55.861" N
P-139	84° 59' 59.398" E	23° 55' 56.648" N
P-140	84° 59' 59.012" E	23° 55' 57.650" N
P-141	84° 59' 58.166" E	23° 55' 59.678" N
P-142	84° 59' 56.731" E	23° 56' 2.773" N
P-143	84° 59' 55.770" E	23° 56' 3.400" N
P-144	84° 59' 53.941" E	23° 56' 4.894" N
P-145	84° 59' 51.565" E	23° 56' 6.534" N
P-146	84° 59' 49.555" E	23° 56' 8.395" N
P-147	84° 59' 48.145" E	23° 56' 9.406" N
P-148	84° 59' 46.096" E	23° 56' 10.850" N
P-149	84° 59' 46.801" E	23° 56' 13.272" N
P-150	84° 59' 46.983" E	23° 56' 13.895" N

### Provisional cardinal points of Brinda Block

Point ID	Longitude	Latitude
P-151	84° 59' 47.536" E	23° 56' 15.548" N
P-152	84° 59' 47.686" E	23° 56' 17.183" N
P-153	84° 59' 47.569" E	23° 56' 18.871" N
P-154	84° 59' 47.308" E	23° 56' 19.927" N
P-155	84° 59' 45.957" E	23° 56' 22.460" N
P-156	84° 59' 44.879" E	23° 56' 24.198" N
P-157	84° 59' 43.626" E	23° 56' 26.168" N
P-158	84° 59' 45.408" E	23° 56' 26.176" N
P-159	85° 0' 4.778" E	23° 56' 26.259" N
P-160	85° 0' 21.345" E	23° 56' 26.316" N
P-161	85° 0' 26.612" E	23° 56' 26.334" N
P-162	85° 0' 26.846" E	23° 56' 26.335" N
P-163	85° 0' 27.320" E	23° 56' 26.009" N
P-164	85° 0' 28.024" E	23° 56' 25.525" N
P-165	85° 0' 28.633" E	23° 56' 25.066" N
P-166	85° 0' 29.126" E	23° 56' 24.625" N
P-167	85° 0' 29.598" E	23° 56' 24.237" N
P-168	85° 0' 30.094" E	23° 56' 23.878" N
P-169	85° 0' 30.772" E	23° 56' 23.386" N
P-170	85° 0' 31.194" E	23° 56' 23.077" N
P-171	85° 0' 32.189" E	23° 56' 22.380" N
P-172	85° 0' 33.347" E	23° 56' 21.744" N
P-173	85° 0' 34.866" E	23° 56' 20.910" N
P-174	85° 0' 35.698" E	23° 56' 20.490" N
P-175	85° 0' 36.709" E	23° 56' 20.062" N
P-176	85° 0' 38.594" E	23° 56' 19.288" N
P-177	85° 0' 41.246" E	23° 56' 18.253" N
P-178	85° 0' 41.989" E	23° 56' 17.977" N
P-179	85° 0' 43.246" E	23° 56' 17.558" N
P-180	85° 0' 44.295" E	23° 56' 17.208" N
P-181	85° 0' 45.465" E	23° 56' 16.818" N
P-182	85° 0' 46.327" E	23° 56' 16.589" N
P-183	85° 0' 46.963" E	23° 56' 16.419" N
P-184	85° 0' 47.537" E	23° 56' 16.266" N
P-185	85° 0' 48.142" E	23° 56' 16.105" N
P-186	85° 0' 49.023" E	23° 56' 15.939" N
P-187	85° 0' 49.707" E	23° 56' 15.811" N
P-188	85° 0' 50.566" E	23° 56' 15.669" N
P-189	85° 0' 51.327" E	23° 56' 15.567" N
P-190	85° 0' 52.036" E	23° 56' 15.472" N
P-191	85° 0' 52.733" E	23° 56' 15.447" N
P-192	85° 0' 53.594" E	23° 56' 15.469" N
P-193	85° 0' 54.327" E	23° 56' 15.488" N
P-194	85° 0' 56.170" E	23° 56' 15.719" N
P-195	85° 0' 57.690" E	23° 56' 15.948" N
P-196	85° 0' 59.418" E	23° 56' 16.228" N
P-197	85° 1' 1.193" E	23° 56' 16.534" N
P-198	85° 1' 2.147" E	23° 56' 16.701" N
P-199	85° 1' 2.924" E	23° 56' 16.838" N
P-200	85° 1' 4.147" E	23° 56' 16.953" N

### Provisional cardinal points of Brinda Block

Point ID	Longitude	Latitude
P-201	85° 1' 5.138" E	23° 56' 17.047" N
P-202	85° 1' 6.417" E	23° 56' 17.167" N
P-203	85° 1' 6.736" E	23° 56' 17.196" N
P-204	85° 1' 7.804" E	23° 56' 17.107" N
P-205	85° 1' 8.723" E	23° 56' 16.941" N
P-206	85° 1' 9.267" E	23° 56' 16.842" N
P-207	85° 1' 10.024" E	23° 56' 16.424" N
P-208	85° 1' 11.371" E	23° 56' 15.672" N
P-209	85° 1' 12.948" E	23° 56' 14.774" N
P-210	85° 1' 14.396" E	23° 56' 13.709" N
P-211	85° 1' 15.817" E	23° 56' 12.566" N
P-212	85° 1' 16.691" E	23° 56' 11.695" N
P-213	85° 1' 17.555" E	23° 56' 10.834" N
P-214	85° 1' 18.134" E	23° 56' 9.989" N
P-215	85° 1' 18.711" E	23° 56' 9.144" N
P-216	85° 1' 19.077" E	23° 56' 8.609" N
P-217	85° 1' 19.438" E	23° 56' 7.770" N
P-218	85° 1' 19.717" E	23° 56' 7.121" N
P-219	85° 1' 19.774" E	23° 56' 6.644" N
P-220	85° 1' 19.852" E	23° 56' 5.998" N
P-221	85° 1' 19.888" E	23° 56' 5.085" N
P-222	85° 1' 20.394" E	23° 56' 4.333" N
P-223	85° 1' 21.135" E	23° 56' 3.232" N
P-224	85° 1' 21.938" E	23° 56' 2.037" N
P-225	85° 1' 23.053" E	23° 56' 0.379" N
P-226	85° 1' 24.277" E	23° 55' 58.557" N
P-227	85° 1' 25.519" E	23° 55' 56.711" N
P-228	85° 1' 26.652" E	23° 55' 55.025" N
P-229	85° 1' 27.316" E	23° 55' 54.037" N
P-230	85° 1' 27.833" E	23° 55' 53.563" N
P-231	85° 1' 33.936" E	23° 55' 47.963" N
P-232	85° 1' 36.821" E	23° 55' 42.271" N
P-233	85° 1' 40.117" E	23° 55' 35.440" N
P-234	85° 1' 41.745" E	23° 55' 25.955" N
P-235	85° 1' 42.967" E	23° 55' 19.505" N

**Provisional cardinal points of Sisai Block**

<b>Point</b>	<b>Longitude</b>	<b>Latitude</b>
P-01	85° 3' 17.504" E	23° 55' 49.479" N
P-02	85° 3' 17.535" E	23° 54' 42.520" N
P-03	85° 3' 17.429" E	23° 54' 21.987" N
P-04	85° 3' 4.753" E	23° 54' 22.311" N
P-05	85° 2' 55.651" E	23° 54' 22.543" N
P-06	85° 2' 54.360" E	23° 54' 22.580" N
P-07	85° 1' 43.252" E	23° 54' 36.916" N
P-08	85° 1' 39.120" E	23° 54' 37.678" N
P-09	85° 1' 36.695" E	23° 54' 38.125" N
P-10	85° 1' 35.672" E	23° 54' 38.351" N
P-11	85° 1' 35.134" E	23° 54' 38.471" N
P-12	85° 1' 35.454" E	23° 54' 39.419" N
P-13	85° 1' 35.610" E	23° 54' 39.884" N
P-14	85° 1' 35.707" E	23° 54' 40.171" N
P-15	85° 1' 35.814" E	23° 54' 41.127" N
P-16	85° 1' 35.921" E	23° 54' 42.091" N
P-17	85° 1' 36.066" E	23° 54' 42.955" N
P-18	85° 1' 36.115" E	23° 54' 43.228" N
P-19	85° 1' 36.283" E	23° 54' 44.169" N
P-20	85° 1' 36.725" E	23° 54' 45.752" N
P-21	85° 1' 36.902" E	23° 54' 46.390" N
P-22	85° 1' 36.957" E	23° 54' 46.586" N
P-23	85° 1' 37.856" E	23° 54' 49.342" N
P-24	85° 1' 38.351" E	23° 54' 50.481" N
P-25	85° 1' 39.476" E	23° 54' 53.070" N
P-26	85° 1' 40.002" E	23° 54' 54.257" N
P-27	85° 1' 41.167" E	23° 54' 56.378" N
P-28	85° 1' 41.886" E	23° 54' 57.686" N
P-29	85° 1' 42.060" E	23° 54' 58.003" N
P-30	85° 1' 43.441" E	23° 54' 59.900" N
P-31	85° 1' 44.930" E	23° 55' 1.630" N
P-32	85° 1' 46.929" E	23° 55' 4.305" N
P-33	85° 1' 48.162" E	23° 55' 6.298" N
P-34	85° 1' 48.596" E	23° 55' 7.878" N
P-35	85° 1' 48.518" E	23° 55' 9.360" N
P-36	85° 1' 47.930" E	23° 55' 11.120" N
P-37	85° 1' 47.095" E	23° 55' 13.053" N
P-38	85° 1' 42.967" E	23° 55' 19.505" N
P-39	85° 1' 41.745" E	23° 55' 25.955" N
P-40	85° 1' 40.117" E	23° 55' 35.440" N
P-41	85° 1' 36.821" E	23° 55' 42.271" N
P-42	85° 1' 33.936" E	23° 55' 47.963" N
P-43	85° 1' 27.316" E	23° 55' 54.037" N
P-44	85° 1' 19.888" E	23° 56' 5.085" N
P-45	85° 1' 19.878" E	23° 56' 5.782" N
P-46	85° 1' 19.717" E	23° 56' 7.121" N
P-47	85° 1' 19.077" E	23° 56' 8.609" N
P-48	85° 1' 17.555" E	23° 56' 10.834" N
P-49	85° 1' 15.817" E	23° 56' 12.566" N

### Provisional cardinal points of Sisai Block

Point	Longitude	Latitude
P-50	85° 1' 14.396" E	23° 56' 13.709" N
P-51	85° 1' 12.948" E	23° 56' 14.774" N
P-52	85° 1' 10.909" E	23° 56' 15.934" N
P-53	85° 1' 9.267" E	23° 56' 16.842" N
P-54	85° 1' 7.804" E	23° 56' 17.107" N
P-55	85° 1' 6.736" E	23° 56' 17.196" N
P-56	85° 1' 5.138" E	23° 56' 17.047" N
P-57	85° 1' 2.924" E	23° 56' 16.838" N
P-58	85° 1' 0.068" E	23° 56' 16.336" N
P-59	85° 0' 58.220" E	23° 56' 16.029" N
P-60	85° 0' 55.980" E	23° 56' 15.690" N
P-61	85° 0' 54.327" E	23° 56' 15.488" N
P-62	85° 0' 52.307" E	23° 56' 15.436" N
P-63	85° 0' 50.197" E	23° 56' 15.719" N
P-64	85° 0' 48.142" E	23° 56' 16.105" N
P-65	85° 0' 45.465" E	23° 56' 16.818" N
P-66	85° 0' 41.741" E	23° 56' 18.060" N
P-67	85° 0' 37.900" E	23° 56' 19.558" N
P-68	85° 0' 35.414" E	23° 56' 20.610" N
P-69	85° 0' 32.017" E	23° 56' 22.475" N
P-70	85° 0' 30.597" E	23° 56' 23.514" N
P-71	85° 0' 29.405" E	23° 56' 24.376" N
P-72	85° 0' 28.438" E	23° 56' 25.241" N
P-73	85° 0' 26.846" E	23° 56' 26.335" N
P-74	85° 1' 46.055" E	23° 56' 26.818" N
P-75	85° 3' 17.294" E	23° 56' 27.431" N
P-76	85° 3' 17.367" E	23° 56' 25.747" N
P-77	85° 3' 17.449" E	23° 56' 23.852" N
P-78	85° 3' 17.504" E	23° 55' 49.479" N