

BIJAHAN COAL BLOCK SUMMARY

PART A

Sr. No	Features	Details
1. Location		
	Coal Block	Bijahan
	Latitude	22° 04' 50" N - 22° 07' 01" N (Provisional)
	Longitude	83° 35' 29" E - 83° 37' 41" E (Provisional)
	Topo Sheet No.	64 N/12 (RF 1:50,000)
	Coalfield	Ib Valley
	Villages	Bijahana, Jharpalanka, Girisuan, Latapani
	Tehsil/Taluka	Hemgir
	District	Sundargarh
	State	Odisha
2. Connectivity with Block		
	Nearest Rail Head	The nearest railway station is Hemgiri on Bombay-Howrah Main Line of SE Railway, south of the block at a distance of 28 km.
	Road	It is connected to a fair weather road, Raigarh in Chhattisgarh and Sundergarh in Orissa at a distance of 60 & 68 km respectively.
	Airport	-
3. Area		
	Geological Block Area	10.86 sq.km. (As per shape file; Refer Note No. 3)
	Green Cover	Approx. 39 % (As per FSI plan)
	Area excluding green cover	Approx. 61 % (As per FSI plan)
4. Climate and Topography		
	Average Annual Rainfall	1500 mm
	Temperature (Min. — Max.)	3°C to 42°C
	Local Surface Drainage Channels	The drainage of the area shows the dendritic pattern. Budiholia nala trending north-south flows through eastern part of the block.
	Rivers	-
5. Exploration		
	Status	Explored
	Exploration Agency	MECL, GSI
	Total Number of Boreholes with meterage	54 Boreholes; 10325.25 m (MECL: 52 Boreholes, 9706.60 m and GSI: 02 Boreholes, 618.65 m).

	Borehole Density	Approx. 5 Boreholes/sq.km.			
	General Dip of Seams	The beds dip southerly 3° to 6°			
	General Strike Direction	The general strike of the beds is WNW – ESE with minor swings.			
6.	Coal Seams & Reserve				
	Coal Seams	Thickness Range (m)	Depth Range (m)	Geological Reserve (MT) (Proved+Indicated +Inferred)	Grade
	Lajkura IV-Top	2.56-6.15	14.69-81.52	18.4501	F-G
	Lajkura IV-Bot	0.35-1.50	18.70-87.38	3.2332	F-G/E-G
	Lajkura III	0.70-1.52		0.6190	F-G
	Lajkura II T-2	0.12-0.94			
	Lajkura II(T-1+T-1A+Bot) Lajkura I	24.89-33.70	16.60-155.15	167.8047	F-G
	Rampur V	0.50-2.75	67.60-221.35	23.8868	E-G
	Rampur IV Top	0.16-1.60		-	-
	Rampur IV Bot	0.05-1.05		-	-
	Rampur IIIA	0.10-1.28		-	-
	Rampur III Top	0.35-2.25		1.7747	F-G
	Rampur III Bot	0.90-4.46	106.65-270.81	32.0848	E-G
	Rampur II+I	0.80-7.25	129.12-302.90	53.6585	C-F
	Ib	0.98-11.09	214.77-343.30	25.5343	C-E
		Total		327.0461	
7.	Surface Constraints	NA			
8.	Grade of the block	G11 (Provisional) based on weighted average grade as per data available in GR.			
9.	Decision Support System (DSS) Analysis	The polygon touches Wildlife Habitat(s)- Sloth Bear			
10.	Eco Sensitive Zone (ESZ) Analysis	Approx. 37 km from the northern boundary of ESZ of Debigarh.			

PART B

Sr. No.	Features	Details (As per information submitted by prior allottee)
1.	Previous Allocation	
	Name and Address of Allocatee	M/s- Bhushan Ltd., M/s- Shri Mahavir Ferro Alloys Pvt. Limited M/s- Bhushan Ltd - 4 th floor Tolstoy house, 15-17 Tolstoy marg, Cannought place, New Delhi- 110001
2.	Target Capacity as per Mining Plan	5.26 Mty
3.	Status of Clearances/Approvals	
	Mining Plan/ Mine Closure Plan	Mining plan approved vide MoC letter no. 13016/33/2005-CA-1 dated 13.8.2008 Mine closure plan approved
	Forest Clearance	NA
	Environmental Clearance	NA

	Mining Lease Grant	Not Available
	Land Acquisition	331.70 Ac. (Govt. land)
	No. of PAPs as per Mining Plan	434
4.	Surface Infrastructure already built, if any.	Road for transportation of coal and periphery development has been done

Note:

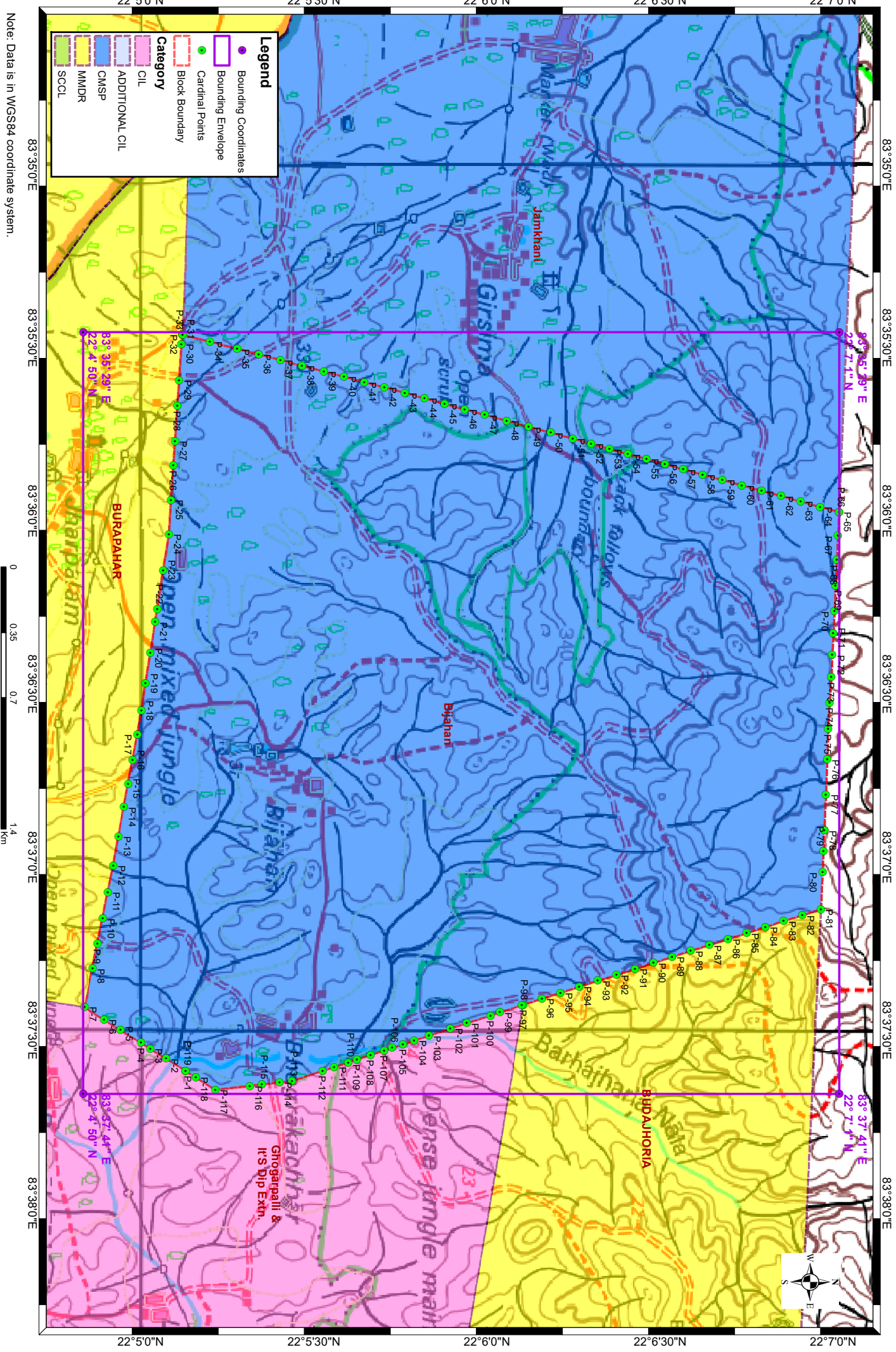
1. The above data is compiled from Geological Report, Mining Plan and the data furnished by the prior allottee in Annexure-I/II, as available. For clarifications with regard to above data, please refer aforesaid source documents.
2. The boundary of the block has been taken from GR after conversion to WGS84 system by feature matching. The block boundary is provisional and the cardinal points, bounding coordinates are approximate.
3. There may be a difference in area in the shape file and GR. Area in the shape file is based on feature mapped plan of the block as given in the GR. So, the area is tentative and field DGPS survey is required to ascertain the exact area.

Disclaimer:

1. The analysis is done on Beta-version (Trial Version) of Decision Support System (DSS) of FSI / MOEF.
2. The Decision Rules for various parameters of this DSS System are controlled by FSI.
3. CMPDI only runs this DSS to obtain the status of any block based on these Decision Rules.
4. The database of the Decision Rules is updated by FSI from time to time.
5. CMPDI does not own any responsibility for variation in the results which are based on the Decision Rules of the FSI DSS in case of any updation of the database at FSI end.
6. ESZ analysis and tiger habitat/ corridor given here is based on the information available in public domain. Bidders are encouraged to verify this information and any other information additionally available.

Bijahan Block, Ib Valley Coalfield

FOR INTERNAL/RESTRICTED USE ONLY



Legend	
●	Bounding Coordinates
	Bounding Envelope
●	Cardinal Points
	Block Boundary
Category	
	CIL
	ADDITIONAL CIL
	CMSP
	MMDR
	SCCL

Note: Data is in WGS84 coordinate system.



Provisional Cardinal Points for Bijahan Block

POINT NO	Longitude (WGS84)	Latitude (WGS84)
P-1	83° 37' 37.002" E	22° 5' 7.715" N
P-2	83° 37' 34.872" E	22° 5' 4.369" N
P-3	83° 37' 33.156" E	22° 5' 1.613" N
P-4	83° 37' 32.136" E	22° 5' 0.017" N
P-5	83° 37' 29.922" E	22° 4' 56.467" N
P-6	83° 37' 28.103" E	22° 4' 53.600" N
P-7	83° 37' 25.980" E	22° 4' 50.243" N
P-8	83° 37' 19.295" E	22° 4' 51.602" N
P-9	83° 37' 14.951" E	22° 4' 52.476" N
P-10	83° 37' 10.608" E	22° 4' 53.351" N
P-11	83° 37' 6.038" E	22° 4' 54.269" N
P-12	83° 37' 1.469" E	22° 4' 55.187" N
P-13	83° 36' 56.365" E	22° 4' 56.121" N
P-14	83° 36' 51.261" E	22° 4' 57.056" N
P-15	83° 36' 47.223" E	22° 4' 57.797" N
P-16	83° 36' 43.185" E	22° 4' 58.539" N
P-17	83° 36' 38.741" E	22° 4' 59.373" N
P-18	83° 36' 34.553" E	22° 5' 0.054" N
P-19	83° 36' 29.840" E	22° 5' 0.792" N
P-20	83° 36' 24.585" E	22° 5' 1.597" N
P-21	83° 36' 19.182" E	22° 5' 2.463" N
P-22	83° 36' 17.032" E	22° 5' 2.811" N
P-23	83° 36' 10.243" E	22° 5' 3.864" N
P-24	83° 36' 4.050" E	22° 5' 4.830" N
P-25	83° 35' 58.083" E	22° 5' 5.206" N
P-26	83° 35' 52.072" E	22° 5' 5.615" N
P-27	83° 35' 47.858" E	22° 5' 5.894" N
P-28	83° 35' 41.746" E	22° 5' 6.313" N
P-29	83° 35' 37.377" E	22° 5' 6.604" N
P-30	83° 35' 31.064" E	22° 5' 7.003" N
P-31	83° 35' 29.366" E	22° 5' 7.170" N
P-32	83° 35' 29.382" E	22° 5' 7.258" N
P-33	83° 35' 29.452" E	22° 5' 7.256" N
P-34	83° 35' 30.660" E	22° 5' 11.958" N
P-35	83° 35' 31.869" E	22° 5' 16.660" N
P-36	83° 35' 32.852" E	22° 5' 20.417" N
P-37	83° 35' 33.835" E	22° 5' 24.175" N
P-38	83° 35' 34.818" E	22° 5' 27.932" N
P-39	83° 35' 35.801" E	22° 5' 31.690" N
P-40	83° 35' 36.720" E	22° 5' 35.189" N
P-41	83° 35' 37.639" E	22° 5' 38.689" N
P-42	83° 35' 38.558" E	22° 5' 42.189" N
P-43	83° 35' 39.477" E	22° 5' 45.689" N
P-44	83° 35' 40.442" E	22° 5' 49.155" N
P-45	83° 35' 41.406" E	22° 5' 52.620" N
P-46	83° 35' 42.371" E	22° 5' 56.086" N
P-47	83° 35' 43.336" E	22° 5' 59.551" N

Provisional Cardinal Points for Bijahan Block

P-48	83° 35' 44.363" E	22° 6' 3.367" N
P-49	83° 35' 45.391" E	22° 6' 7.182" N
P-50	83° 35' 46.419" E	22° 6' 10.998" N
P-51	83° 35' 47.447" E	22° 6' 14.813" N
P-52	83° 35' 48.333" E	22° 6' 18.007" N
P-53	83° 35' 49.219" E	22° 6' 21.201" N
P-54	83° 35' 50.106" E	22° 6' 24.394" N
P-55	83° 35' 50.992" E	22° 6' 27.588" N
P-56	83° 35' 51.879" E	22° 6' 30.782" N
P-57	83° 35' 52.765" E	22° 6' 33.975" N
P-58	83° 35' 53.693" E	22° 6' 37.361" N
P-59	83° 35' 54.622" E	22° 6' 40.746" N
P-60	83° 35' 55.550" E	22° 6' 44.131" N
P-61	83° 35' 56.478" E	22° 6' 47.516" N
P-62	83° 35' 57.407" E	22° 6' 50.901" N
P-63	83° 35' 58.335" E	22° 6' 54.286" N
P-64	83° 35' 59.263" E	22° 6' 57.671" N
P-65	83° 36' 0.167" E	22° 7' 0.967" N
P-66	83° 36' 0.236" E	22° 7' 0.964" N
P-67	83° 36' 4.274" E	22° 7' 0.764" N
P-68	83° 36' 8.441" E	22° 7' 0.557" N
P-69	83° 36' 12.906" E	22° 7' 0.351" N
P-70	83° 36' 17.371" E	22° 7' 0.145" N
P-71	83° 36' 21.155" E	22° 6' 59.964" N
P-72	83° 36' 24.939" E	22° 6' 59.783" N
P-73	83° 36' 28.723" E	22° 6' 59.602" N
P-74	83° 36' 33.217" E	22° 6' 59.338" N
P-75	83° 36' 37.711" E	22° 6' 59.074" N
P-76	83° 36' 43.083" E	22° 6' 58.935" N
P-77	83° 36' 49.182" E	22° 6' 58.693" N
P-78	83° 36' 55.333" E	22° 6' 58.404" N
P-79	83° 36' 58.960" E	22° 6' 58.253" N
P-80	83° 37' 2.588" E	22° 6' 58.103" N
P-81	83° 37' 9.003" E	22° 6' 57.835" N
P-82	83° 37' 10.037" E	22° 6' 54.611" N
P-83	83° 37' 11.071" E	22° 6' 51.387" N
P-84	83° 37' 12.104" E	22° 6' 48.163" N
P-85	83° 37' 13.138" E	22° 6' 44.939" N
P-86	83° 37' 14.172" E	22° 6' 41.715" N
P-87	83° 37' 15.206" E	22° 6' 38.491" N
P-88	83° 37' 16.239" E	22° 6' 35.268" N
P-89	83° 37' 17.273" E	22° 6' 32.044" N
P-90	83° 37' 18.307" E	22° 6' 28.820" N
P-91	83° 37' 19.340" E	22° 6' 25.596" N
P-92	83° 37' 20.374" E	22° 6' 22.372" N
P-93	83° 37' 21.407" E	22° 6' 19.148" N
P-94	83° 37' 22.441" E	22° 6' 15.924" N
P-95	83° 37' 23.475" E	22° 6' 12.700" N

Provisional Cardinal Points for Bijahan Block

P-96	83° 37' 24.508" E	22° 6' 9.477" N
P-97	83° 37' 25.542" E	22° 6' 6.253" N
P-98	83° 37' 25.636" E	22° 6' 5.971" N
P-99	83° 37' 26.867" E	22° 6' 2.187" N
P-100	83° 37' 27.424" E	22° 6' 0.547" N
P-101	83° 37' 28.760" E	22° 5' 56.453" N
P-102	83° 37' 29.687" E	22° 5' 53.632" N
P-103	83° 37' 30.908" E	22° 5' 49.880" N
P-104	83° 37' 31.754" E	22° 5' 47.345" N
P-105	83° 37' 32.408" E	22° 5' 45.394" N
P-106	83° 37' 33.019" E	22° 5' 43.528" N
P-107	83° 37' 33.499" E	22° 5' 42.132" N
P-108	83° 37' 34.250" E	22° 5' 39.794" N
P-109	83° 37' 35.039" E	22° 5' 37.383" N
P-110	83° 37' 35.555" E	22° 5' 35.899" N
P-111	83° 37' 36.343" E	22° 5' 33.482" N
P-112	83° 37' 37.000" E	22° 5' 31.478" N
P-113	83° 37' 38.783" E	22° 5' 26.152" N
P-114	83° 37' 39.002" E	22° 5' 24.049" N
P-115	83° 37' 39.362" E	22° 5' 20.947" N
P-116	83° 37' 39.611" E	22° 5' 18.882" N
P-117	83° 37' 40.248" E	22° 5' 12.903" N
P-118	83° 37' 38.104" E	22° 5' 9.496" N

Note: The provisional cardinal points are in WGS84 coordinate system. These points are extracted through ArcGIS software after georeferencing of block boundary and onground DGPS survey is required to ascertain the exact location of the points.