

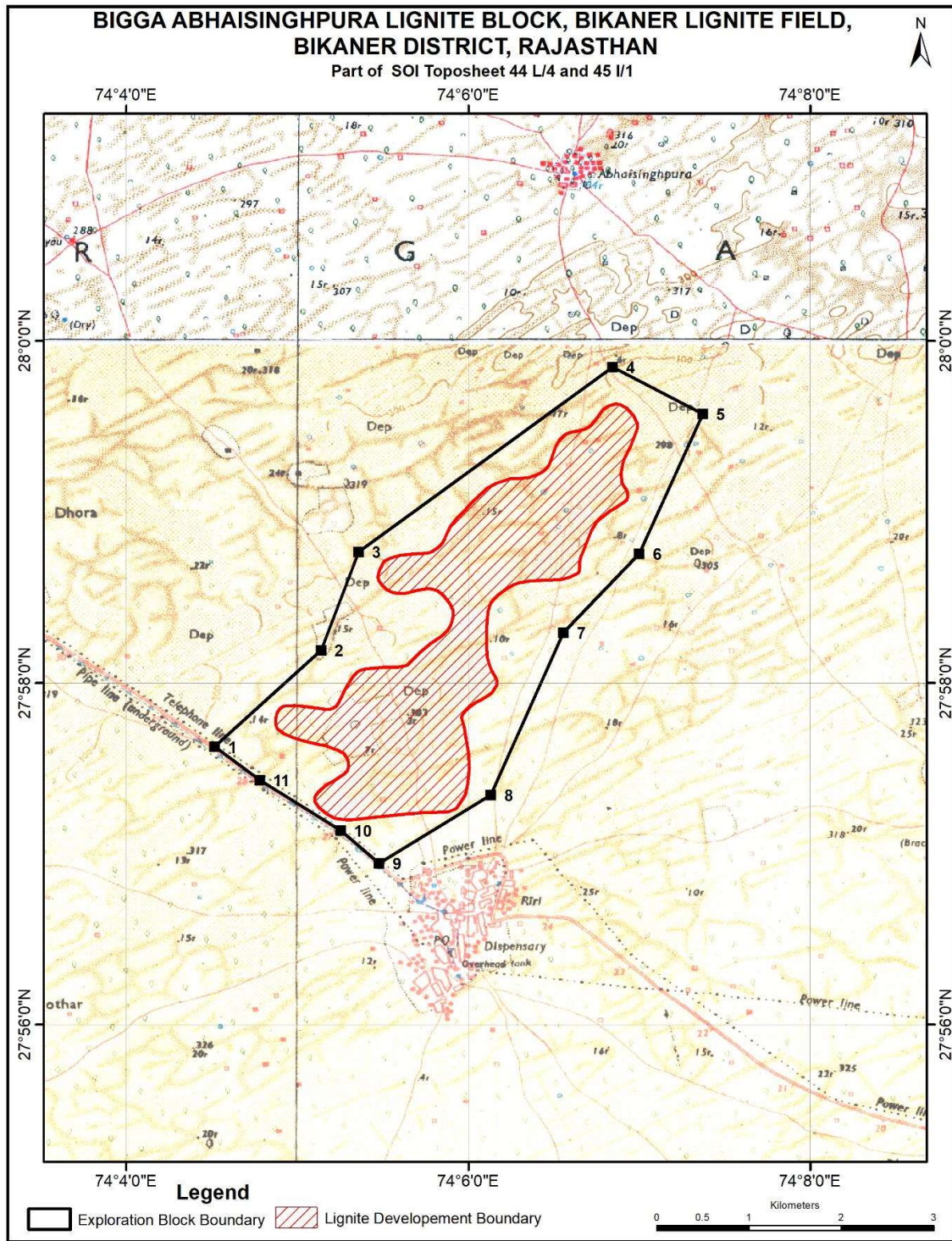
Bigga-Abhaysingpura Lignite Block Summary

Sr.No.	Features	Details
1	Location	
	Lignite Block	BiggaAbhaysingpura
	<u>Latitude</u>	Latitude: N 27° 56' 57" to 28° 02' 05"
	Longitude	Longitude : E 74° 04' 30" to 74° 09' 25"
	Topo Sheet No.	44 L/4 & 45 I/4
	Lignite Field	Bikaner Lignite Field
	Villages	Abhaysingpura, Riri
	Tehsil/Taluka	Sri-Dungargarh
	District	Bikaner
	State	Rajasthan
2	Connectivity with Block	
	Nearest Rail Head	Bigga on Bikaner-Ratangarh line
	Road	The block is approachable by Bikaner – Sri Dungargarh National Highway No.11 and by Bikaner – Sri Dungargarh rail line of Western Railway.
	Airport	Bikaner
3	Area	
	Geological Block Area	10.7 Sq.km
	Forest Area	No forest as per Toposheet
	Non-Forest Area	10.7 Sq.km
4	Climate and Topography	
	Average Annual Rainfall	230 mm.
	Temperature (Min.-Max. in°C)	5 to 48
	Local Surface Drainage Channels	The area is devoid of any drainage pattern. The local nalas fed by rain water die out at very short distances due to sandy nature of the surface.
	Rivers	Nil
5	Exploration	
	Status	Indicated Category, (800m and 400m borehole spacing)
	Exploration Agency	Mineral Exploration Corporation Ltd., (MECL)
	Explored Area (as per GR)	50 Sq. km (Appx.) as per GR.
	Total Number of Boreholes with metreage	68 boreholes & 12723.40 m
	Borehole Density	1.36
	General Dip of Seams	The general dip of the bed is due north-west to north. & it varies from 1.5° to 3°.
	General Strike Direction	NE-SW with local undulations and warping
	Faults	Devoid of fault
	Depth range of Lignite seam	99.30m to 178.40m
6	Lignite Reserve:	Indicated Category.

	Grade-wise	Grade as per National Lignite Index	GCV Range (K.Cal/Kg.)	Area (Sq km)	Gross Reserves (MT)	Reserves %
		G17 & below	1001-2000	1.400	11.077	24.82
		G15,G16,G17	2001-3000	2.776	33.561	75.18
			Total	4.476	44.638	100.00
	Ratio-wise	Lignite to OB+IB Ratio	Area (Sq km)	Gross Reserves (m.t.)	Reserves %	
		< 1 : 10	0.477	9.326	20.89	
		1 :10 –1: 15	1.267	18.495	41.43	
		> 1 : 15	2.732	16.817	37.68	
			Total	4.476	44.638	100.00
7	Surface Constraints	Nil				
8	Grade of Lignite	G15, G16, G17, G17 & below (Provisional). Based on Grade wise data available in GR.				
9	Decision Support System (DSS) Analysis	-				
10	Eco Sensitive Zone (ESZ)	Talchhapar WLS is at about 33Km in the South-East direction from the block.				
11	Remarks	Regional exploration on 800 m and 400 m grid interval completed. Detailed exploration to be carried out.				

Note:

1. The summary has been compiled from "Geological Report on Exploration for Lignite, Bigga Abhaysingpura Block, Bikaner District, Rajasthan-March 2008, prepared by Mineral Exploration Corporation Ltd., Nagpur.
2. The Exploration block area mentioned above is as given in the Geological report, which may vary after DGPS survey.



**Provisional cardinal Points for Bigga-Abhaisinghpura Lignite Block, Bikaner District,
Rajasthan.**

Boundary Points	Latitude (DMS)	Longitude (DMS)
1	27° 57' 37.553" N	74° 4' 30.960" E
2	27° 58' 11.526" N	74° 5' 8.312" E
3	27° 58' 46.077" N	74° 5' 21.501" E
4	27° 59' 50.908" N	74° 6' 50.612" E
5	27° 59' 34.423" N	74° 7' 22.249" E
6	27° 58' 45.278" N	74° 6' 59.977" E
7	27° 58' 17.598" N	74° 6' 33.383" E
8	27° 57' 20.610" N	74° 6' 7.874" E
9	27° 56' 56.656" N	74° 5' 28.659" E
10	27° 57' 8.156" N	74° 5' 15.181" E
11	27° 57' 25.822" N	74° 4' 46.757" E