

**Beheraband North Extn Block Summary
PART A**

Sr. No.	Features	Details
1.	Location	
	Coal Block	Beheraband North Extn.
	Latitude	23° 18' 37" N-23° 21' 36" N (Provisional)
	Longitude	82° 5' 10" E-82° 7' 37" E (Provisional)
	Topo Sheet No.	64 I/3
	Coalfield	Sohagpur
	Villages	Bhulla , Sajatola , Dhawaitola village
	Tehsil/Taluka	
	District	Anuppur
	State	Madhya Pradesh
2.	Connectivity with Block	
	Nearest Rail Head	The Bijuri Railway station on the Anuppur- Chirimiri/ Bisrampur section of S.E.R. is the nearest rail head located 10km due south of the block.
	Road	Block is connected by a fair weather road to State Highway No.14, which passes to the south of the area
	Airport	
3.	Area	
	Geological Block Area	14.84 sq km (As per shape file. Refer note below)
	Forest Area	0.13 sq km (As per FSI map_
	Non-Forest Area	14.71 sq km
4.	Climate and Topography	
	Average Annual Rainfall	6 mm -413 mm
	Temperature (Min. — Max.)	5 °C - 42 °C
	Local Surface Drainage Channels	Kanai Nala and Latura Nala
	Rivers	
5.	Exploration	
	Status	Partly Explored
	Exploration Agency	CMPDI

	Total Number of Boreholes with meterage	72 boreholes & 23388.90 m			
	Borehole Density	Approx. 5 boreholes/sq km			
	General Dip of Seams	In south central part the beds show rolling dip from 0° to 4°. The strata in the western portion of the block show 2°-3° dip In eastern portion the dip of the strata varies from 4°-7°. The dip in the south-eastern part varies from 3°-4°. In the central part dip varies from 0°-1°.			
	General Strike Direction	The beds show rolling strike. The strata in the western portion of the block show NE-SW strike. In eastern portion the strata show NE-SW strike. The strike in the south-eastern part changes from N-S to NE-SW. In the central part the strike varies from N-S to E-W.			
	Faults	Three normal faults (F1, F2 & F3) are found. The trend of NNE-SSW, E-W and NNE-E and the amounts of throw vary from 0-80m, 0-40m and 15-95m respectively.			
6.	Coal Seams and Reserves				
	Number of Coal Seams	7			
	Coal Seams	Thickness Range (m)	Depth Range (m)	*Resources (mt)	Grade
	V TOP	0.64-6.04	198.45-381.81		G12-G4/ WIV-WI
	V BOT	1.00-3.89	205.16-389.88		G10-G4 / WIV-WI
	V COMB				WIV
	INDEX	0.55-1.55	228.95-341.55		G6-G4 /WIV-WI
	IV	0.53-2.08	282.21-393.10		G8-G4
	III	0.49-3.92	330.86-437.59		G10-G1
	II	0.34-2.28	382.61-483.98		
	I	0.22-2.56	423.89-515.80		
		Total		170 Mt	
	Reserve Details	*Proved Coking coal reserve = 120 Mt			
		Proved Non- Coking coal reserve = 45 Mt			
		Indicated Coking coal reserve = 3 Mt			
		Indicated Non-Coking coal reserve = 2 Mt			

		Total Reserve = 170 Mt (Tentative reserve proportionate to area)
7.	Surface Constraints	Nandlal patera Reserve Forest, Bhulla village, Sajatola village, Dhawaitola village;CBM Overlap;
8.	Grade of coal	W IV & G9
9.	Decision Support System (DSS) Analysis	Wildlife info: The polygon touches Wildlife Habitat(s)- Sloth Bear
10.	Eco Sensitive Zone (ESZ)	The ESZ boundary of Guru Ghasi Das (Sanjay) NP is approx.34 ms from N-E block boundary.

Note:

1. The summary has been compiled from Geological report on Beheraband North Extension Block, Sohagpur Coalfield, district Bilaspur, Chattisgarh , December 1996
2. As per the Geological Report on Beheraband North Extension Block, Sohagpur Coalfield, district Bilaspur, Chattisgarh December 1996 area of the block is 14.76 sq km. with a total reserve of 174.875. Out of which Proved coking coal reserve is 126.894 Mt, Proved Non-coking coal reserve is 43.636 Mt and Indicated coking coal reserve is 2.271 Mt , Indiated non- coking coal reserve is 2.18 Mt .The boundary of the block has been re-organised and the new additional portion of 4.65 sq km of unexplored area the north of the block (as per GR) is included. The new modified block area is 14.84 sq km The reserve of the re-organised block has been estimated proportionately on the basis of sector-wise categorization of reserve as per GR.

Disclaimer:

1. The analysis is done on Beta-version (Trial Version) of Decision Support System (DSS) of FSI / MOEF.
2. The Decision Rules for various parameters of this DSS System are controlled by FSI.
3. CMPDI only runs this DSS to obtain the status of any block based on these Decision Rules.
4. The database of the Decision Rules is updated by FSI from time to time.
5. CMPDI does not own any responsibility for variation in the results which are based on the Decision Rules of the FSI DSS in case of any updation of the database at FSI end.
6. ESZ analysis and tiger habitat/ corridor given here is based on the information available in public domain. Bidders are encouraged to verify this information and any other information additionally available.

23°19'0"N

23°20'0"N

23°21'0"N

82°40'E 82°50'E 82°60'E 82°70'E 82°80'E

82°40'E 82°50'E 82°60'E 82°70'E 82°80'E

Beheraband North Extn Block, Sohagpur Coalfield

FOR INTERNAL/RESTRICTED USE ONLY

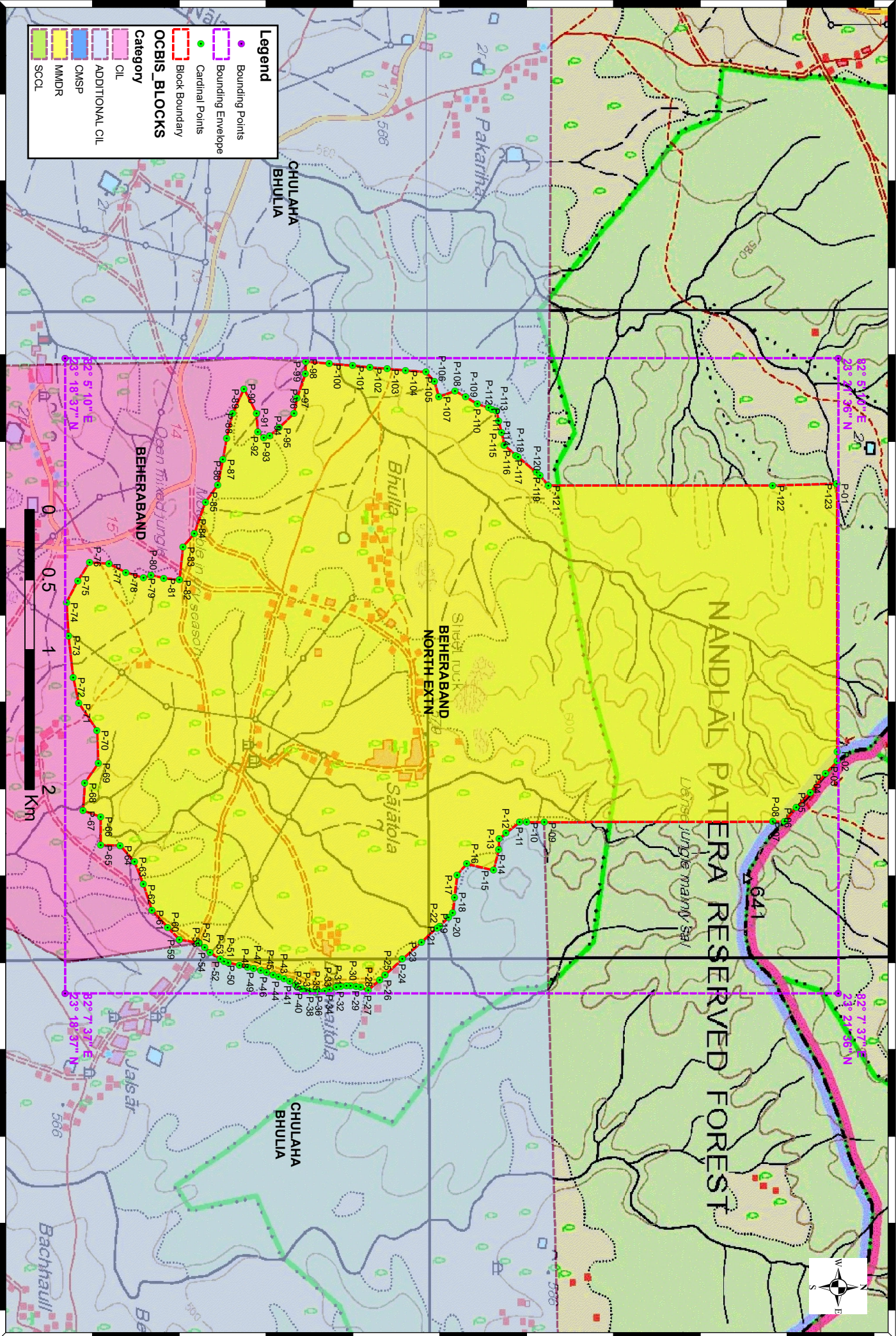
Legend

- Bounding Points
- Bounding Envelope
- Cardinal Points
- Block Boundary

OCBIS_BLOCKS

Category

- CIL
- ADDITIONAL CIL
- CMSP
- MMDR
- SCCL



23°19'0"N

23°20'0"N

23°21'0"N

Provisional Cardinal Points for BEHERABAND NORTH EXTN Block

POINT NO	Longitude (WGS84)	Latitude (WGS84)
P-1	82° 5' 39.053" E	23° 21' 35.634" N
P-2	82° 6' 41.070" E	23° 21' 35.720" N
P-3	82° 6' 43.327" E	23° 21' 35.737" N
P-4	82° 6' 46.128" E	23° 21' 33.039" N
P-5	82° 6' 50.471" E	23° 21' 29.493" N
P-6	82° 6' 53.992" E	23° 21' 26.281" N
P-7	82° 6' 57.255" E	23° 21' 23.531" N
P-8	82° 6' 57.292" E	23° 21' 20.817" N
P-9	82° 6' 57.389" E	23° 20' 27.921" N
P-10	82° 6' 57.416" E	23° 20' 23.797" N
P-11	82° 6' 57.396" E	23° 20' 22.213" N
P-12	82° 6' 59.897" E	23° 20' 19.065" N
P-13	82° 7' 1.244" E	23° 20' 17.450" N
P-14	82° 7' 3.789" E	23° 20' 17.378" N
P-15	82° 7' 8.525" E	23° 20' 16.195" N
P-16	82° 7' 7.045" E	23° 20' 9.955" N
P-17	82° 7' 9.592" E	23° 20' 7.752" N
P-18	82° 7' 14.750" E	23° 20' 7.106" N
P-19	82° 7' 18.454" E	23° 20' 6.709" N
P-20	82° 7' 19.353" E	23° 20' 5.822" N
P-21	82° 7' 21.475" E	23° 20' 3.685" N
P-22	82° 7' 21.839" E	23° 20' 3.087" N
P-23	82° 7' 25.116" E	23° 19' 59.482" N
P-24	82° 7' 29.071" E	23° 19' 55.085" N
P-25	82° 7' 32.733" E	23° 19' 51.075" N
P-26	82° 7' 33.906" E	23° 19' 49.839" N
P-27	82° 7' 36.256" E	23° 19' 47.167" N
P-28	82° 7' 35.625" E	23° 19' 45.460" N
P-29	82° 7' 35.332" E	23° 19' 44.329" N
P-30	82° 7' 35.191" E	23° 19' 43.101" N
P-31	82° 7' 35.203" E	23° 19' 42.170" N
P-32	82° 7' 35.422" E	23° 19' 40.781" N
P-33	82° 7' 35.545" E	23° 19' 39.811" N
P-34	82° 7' 36.172" E	23° 19' 38.223" N
P-35	82° 7' 36.461" E	23° 19' 37.125" N
P-36	82° 7' 36.508" E	23° 19' 35.732" N
P-37	82° 7' 36.731" E	23° 19' 34.921" N
P-38	82° 7' 36.588" E	23° 19' 33.740" N
P-39	82° 7' 36.367" E	23° 19' 32.837" N
P-40	82° 7' 35.901" E	23° 19' 31.795" N
P-41	82° 7' 35.105" E	23° 19' 30.448" N
P-42	82° 7' 34.188" E	23° 19' 29.030" N
P-43	82° 7' 33.568" E	23° 19' 27.698" N
P-44	82° 7' 33.169" E	23° 19' 26.399" N
P-45	82° 7' 32.694" E	23° 19' 25.221" N
P-46	82° 7' 32.102" E	23° 19' 23.633" N
P-47	82° 7' 31.649" E	23° 19' 22.291" N

Provisional Cardinal Points for BEHERABAND NORTH EXTN Block

POINT NO	Longitude (WGS84)	Latitude (WGS84)
P-48	82° 7' 31.226" E	23° 19' 20.639" N
P-49	82° 7' 30.995" E	23° 19' 19.246" N
P-50	82° 7' 30.488" E	23° 19' 17.381" N
P-51	82° 7' 29.904" E	23° 19' 14.751" N
P-52	82° 7' 29.571" E	23° 19' 13.802" N
P-53	82° 7' 29.084" E	23° 19' 12.905" N
P-54	82° 7' 27.459" E	23° 19' 10.593" N
P-55	82° 7' 26.401" E	23° 19' 9.336" N
P-56	82° 7' 25.319" E	23° 19' 8.050" N
P-57	82° 7' 25.346" E	23° 19' 7.863" N
P-58	82° 7' 25.282" E	23° 19' 7.856" N
P-59	82° 7' 24.546" E	23° 19' 3.474" N
P-60	82° 7' 21.708" E	23° 19' 0.726" N
P-61	82° 7' 17.765" E	23° 18' 57.141" N
P-62	82° 7' 11.740" E	23° 18' 55.120" N
P-63	82° 7' 6.554" E	23° 18' 53.092" N
P-64	82° 7' 2.753" E	23° 18' 49.764" N
P-65	82° 7' 2.715" E	23° 18' 45.248" N
P-66	82° 6' 56.149" E	23° 18' 45.295" N
P-67	82° 6' 54.717" E	23° 18' 41.176" N
P-68	82° 6' 48.294" E	23° 18' 41.608" N
P-69	82° 6' 43.709" E	23° 18' 44.738" N
P-70	82° 6' 36.161" E	23° 18' 44.404" N
P-71	82° 6' 29.839" E	23° 18' 40.191" N
P-72	82° 6' 23.876" E	23° 18' 38.891" N
P-73	82° 6' 14.226" E	23° 18' 37.797" N
P-74	82° 6' 6.538" E	23° 18' 37.335" N
P-75	82° 6' 1.530" E	23° 18' 39.951" N
P-76	82° 5' 57.221" E	23° 18' 42.691" N
P-77	82° 5' 57.594" E	23° 18' 47.231" N
P-78	82° 5' 59.581" E	23° 18' 51.089" N
P-79	82° 6' 0.873" E	23° 18' 55.209" N
P-80	82° 6' 0.188" E	23° 18' 56.891" N
P-81	82° 6' 0.911" E	23° 18' 59.854" N
P-82	82° 6' 1.360" E	23° 19' 3.464" N
P-83	82° 5' 53.682" E	23° 19' 4.292" N
P-84	82° 5' 50.629" E	23° 19' 6.895" N
P-85	82° 5' 43.323" E	23° 19' 9.527" N
P-86	82° 5' 39.433" E	23° 19' 12.307" N
P-87	82° 5' 33.482" E	23° 19' 13.553" N
P-88	82° 5' 28.551" E	23° 19' 14.379" N
P-89	82° 5' 22.787" E	23° 19' 15.795" N
P-90	82° 5' 17.126" E	23° 19' 18.415" N
P-91	82° 5' 22.739" E	23° 19' 21.301" N
P-92	82° 5' 27.027" E	23° 19' 21.616" N
P-93	82° 5' 28.342" E	23° 19' 22.983" N
P-94	82° 5' 27.954" E	23° 19' 24.402" N

Provisional Cardinal Points for BEHERABAND NORTH EXTN Block

POINT NO	Longitude (WGS84)	Latitude (WGS84)
P-95	82° 5' 26.108" E	23° 19' 26.565" N
P-96	82° 5' 22.760" E	23° 19' 30.030" N
P-97	82° 5' 19.272" E	23° 19' 30.699" N
P-98	82° 5' 13.652" E	23° 19' 32.652" N
P-99	82° 5' 10.835" E	23° 19' 32.672" N
P-100	82° 5' 11.298" E	23° 19' 38.138" N
P-101	82° 5' 11.772" E	23° 19' 43.536" N
P-102	82° 5' 12.119" E	23° 19' 47.563" N
P-103	82° 5' 12.466" E	23° 19' 51.591" N
P-104	82° 5' 12.858" E	23° 19' 55.844" N
P-105	82° 5' 13.242" E	23° 20' 0.566" N
P-106	82° 5' 15.392" E	23° 20' 2.494" N
P-107	82° 5' 18.924" E	23° 20' 3.524" N
P-108	82° 5' 17.630" E	23° 20' 7.247" N
P-109	82° 5' 19.007" E	23° 20' 9.756" N
P-110	82° 5' 20.626" E	23° 20' 12.397" N
P-111	82° 5' 21.523" E	23° 20' 15.023" N
P-112	82° 5' 21.902" E	23° 20' 15.849" N
P-113	82° 5' 22.275" E	23° 20' 16.822" N
P-114	82° 5' 24.532" E	23° 20' 17.400" N
P-115	82° 5' 27.280" E	23° 20' 18.027" N
P-116	82° 5' 30.196" E	23° 20' 18.683" N
P-117	82° 5' 32.488" E	23° 20' 21.349" N
P-118	82° 5' 32.948" E	23° 20' 21.854" N
P-119	82° 5' 36.494" E	23° 20' 26.189" N
P-120	82° 5' 37.182" E	23° 20' 26.979" N
P-121	82° 5' 39.509" E	23° 20' 28.864" N
P-122	82° 5' 39.464" E	23° 21' 20.775" N