

**Barimahuli Block Summary**  
**PART A**

Sr. No.	Features	Details
<b>1.</b>	<b>Location</b>	
	Coal Block	Barimahuli
	Latitude	24° 8' 31" N-24° 10' 55" N (Provisional)
	Longitude	82° 4' 47" E-82° 7' 49" E (Provisional)
	Topo Sheet No.	63 L/4 (RF 1:50,000)
	Coalfield	Singrauli Coalfield
	Villages	Barimahuli, Chhotimahuli, Dawana
	Tehsil/Taluka	Deosar
	District	Singrauli
	State	Madhya Pradesh
<b>2.</b>	<b>Connectivity with Block</b>	
	Nearest Rail Head	The distance of Barimahuli block from Bargawan, the nearest railway station on Chopan-Singrauli-Katni line of South-Central Railway is about 30 km.
	Road	Located about 65 km west of Waidhan township, Dist: Singrauli in Madhya Pradesh which is also a district head quarter.
	Airport	Nearest Airport is Varanasi, which is about 250 km. away.
<b>3.</b>	<b>Area</b>	
	Geological Block Area	14.26 Sq. Km. (As per shape file. Refer note below)
	Forest Area	2.625 Sq. Km. (As per FSI map)
	Non-Forest Area	11.635 Sq. Km.
<b>4.</b>	<b>Climate and Topography</b>	
	Average Annual Rainfall	The annual rainfall is about 1400 mm and the bulk precipitation is observed during July to September.
	Temperature (Min. — Max.)	The minimum and maximum temperature during December-January varies from less than 4°C to 8°C while maximum temperature during May to June ranges 43°C to 46°C or even higher.
	Local Surface Drainage Channels	The drainage of the block is mainly controlled by south-easterly flowing seasonal nala and some small ponds in the block are also noticed expect one reservoir located in the northeastern part of the block.

	Rivers	The northerly flowing Gopad River which is far away from the western boundary of the block, maintains a perennial flow in the area.			
<b>5.</b>	<b>Exploration</b>				
	Status	Promotional			
	Exploration Agency	MECL			
	Total Number of Boreholes with meterage	23 boreholes (MBMP-1 to 23) & 13113.50 m			
	Borehole Density	Approx. 2 boreholes per sq km			
	General Dip of Seams	The general dip towards South-west whereas in northern part of the block, coal seams swings towards NE-SW direction and its steeply dipping in south-east direction. The amount of Dip of Coal Seams varies within the limit i.e. from 1° to 6°. The maximum Dip is observed in the eastern part of the block.			
	General Strike Direction	The general strike depict NW-SE.			
	Faults	Based on the available data, 6 number of normal gravity faults have been deciphered in this block viz. F1-F1 to F6-F6 designated serially from north to south. Almost all the faults trend roughly in NE-SW to SE-NW direction. Fault F1-F1 trending NE-SW to almost north to south, Fault, F2-F2 & F3-F3 & F6-F6 roughly trending NE-SW whereas Fault, F4-F4 & F5-F5 are trending SE-NW respectively. The magnitude of fault F1-F1 varies from 50 to 55m whereas Fault F2-F2 is the major fault observed in northern part of the block having ranges of throw from 215m to 25m. The magnitude of Fault F3-F3 varies from 10m to 5m, Fault F4-F4 & F5-F5 varies from 40m to 60m whereas fault F6-F6 varies from 50m to 55m respectively. The faults are assumed to have 60° dip.			
<b>6.</b>	<b>Coal Seams &amp; Reserve</b>				
	Coal Seams	Thickness Range (m)	Depth Range (m)	Resources (mt)	Grade
	R-8	0.2	41.87		
	R-6	0.93-1.10	56.43-91.80		
	R-5	0.40-0.48	89.70-126.98		
	R-4	0.21-0.96	24.60-131.10		
	R-3	0.11-0.70	46.76-159.97		
	R-2	0.10-1.28	20.81-74.38		
	R-1	0.51-5.35	37.01-218.30	36.278	
	RL-1	0.10-0.56	141.19-366.25		
	RL-2	0.08-2.93	89.10-217.68		
	VIII	0.12-1.28	212.01-401.78		
	VII-Top	0.07-3.23	342.67-526.76	16.717	
	VII-Bot	0.04-2.30	363.03-550.64	9.424	
	VI	0.05-1.40	348.97-570.51		
	V	0.05-0.57	389.27-484.35		

	IV-Top	0.17-2.30	385.50-605.90	6.807	
	IV-Mid	0.22-5.98	400.80-612.71	8.404	
	IV-Bot	0.10-3.10	406.50-618.71	21.918	
	Local-1	0.10-1.54	421.54-628.15	5.129	
	III-Top	0.06-1.35	480.80-667.50	6.121	
	III-Mid	0.16-1.06	501.16-669.12		
	III-Bot	0.05-1.22	493.30-672.02		
	II	0.10-1.22	399.74-692.04	5.417	
	I-Top	0.03-0.95	523.50-696.94		
	I-Bot	0.05-1.12	525.00-698.23		
	Local-2	0.04-0.13	133.93-175.25		
	Local-3	0.09-0.10	298.90-327.23		
	Local-4	0.03-0.20	444.97-536.78		
	Bands	0.05-0.94	15.55-573.95		
	Local-5	0.05-0.27	545.95-614.93		
	<b>Total</b>			<b>116.215</b>	<b>G11</b>
<b>7.</b>	<b>Surface Constraints</b>	NA			
<b>8.</b>	<b>Grade of coal</b>	Weighted average grade of coal in the block is G11 (Provisional).			
<b>9.</b>	<b>Decision Support System (DSS) Analysis</b>	Hydrology info: The polygon touches waterbody. Water Body: Deori Wildlife info: The polygon touches Wildlife Habitat of Sloth Bear, Gaur			
<b>10.</b>	<b>Eco Sensitive Zone (ESZ)</b>	The ESZ boundary of Sanjay Gandhi Dubri National Park is approx.12 km from Southern block boundary & TRPA of Sanjay-Dubri is approx.14 km from Southern block boundary.			

**Note:**

1. The summary has been compiled from “GEOLOGICAL REPORT ON REGIONAL EXPLORATION FOR COAL BARIMAHULI BLOCK, MAIN BASIN, SINGRAULI COALFIELD, and DISTT: SINGRAULI, M.P”

**Disclaimer:**

1. The analysis is done on Beta-version (Trial Version) of Decision Support System (DSS) of FSI / MOEF.
2. The Decision Rules for various parameters of this DSS System are controlled by FSI.
3. CMPDI only runs this DSS to obtain the status of any block based on these Decision Rules.
4. The database of the Decision Rules is updated by FSI from time to time.
5. CMPDI does not own any responsibility for variation in the results which are based on the Decision Rules of the FSI DSS in case of any updation of the database at FSI end.
6. ESZ analysis and tiger habitat/ corridor given here is based on the information available in public domain. Bidders are encouraged to verify this information and any other information additionally available.

24°9'0"N

24°10'0"N

24°11'0"N

82°50'E

82°60'E

82°70'E

82°80'E

**Barimahuli Block, Singrauli Coalfield**

**FOR INTERNAL/RESTRICTED USE ONLY**

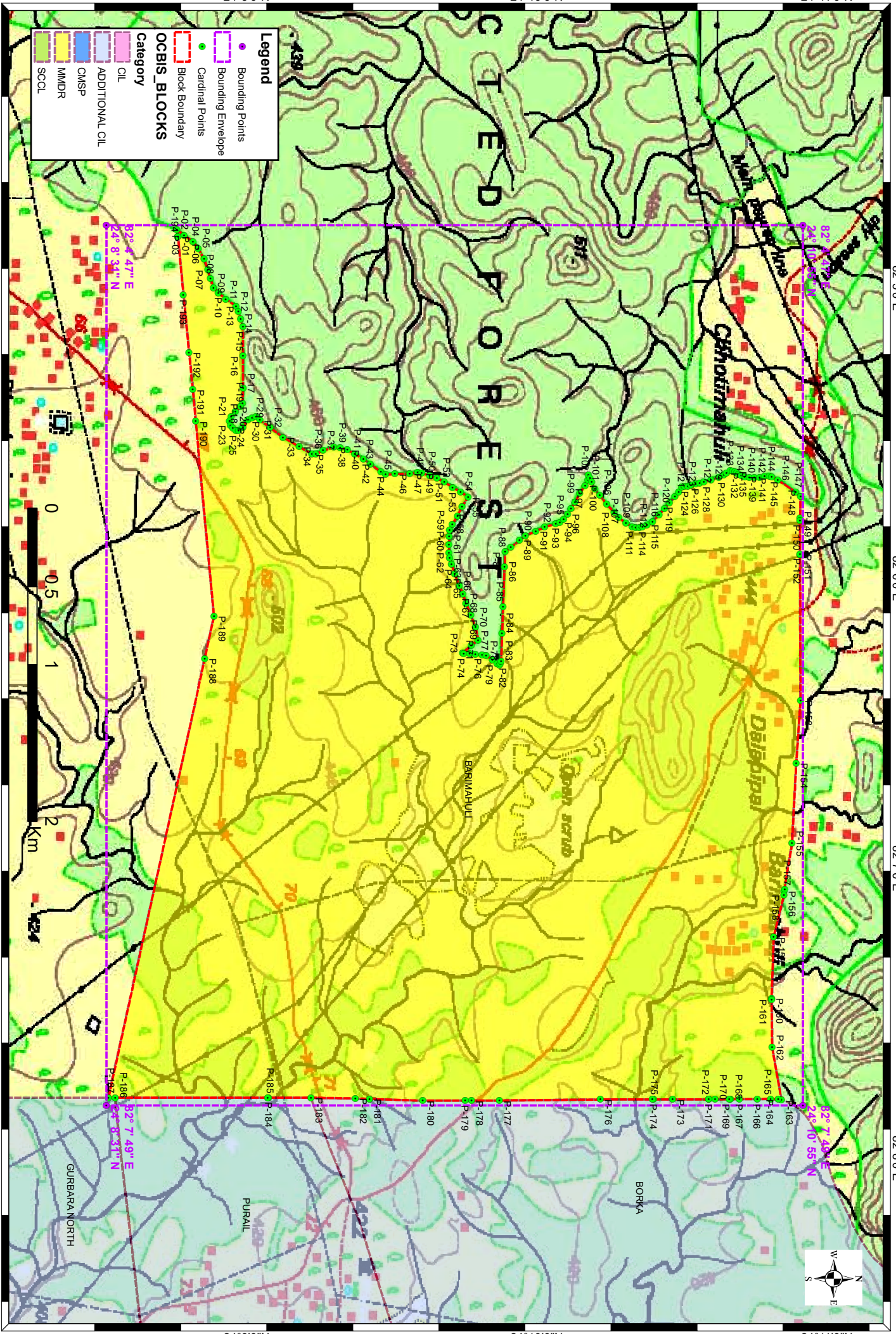
**Legend**

- Bounding Points
- Bounding Envelope
- Cardinal Points
- Block Boundary

**OCBIS\_BLOCKS**

**Category**

- CIL
- ADDITIONAL CIL
- CMSP
- MMDR
- SCCL



**Provisional Cardinal Points for BARIMAHULI Block**

POINT NO	Longitude (WGS84)	Latitude (WGS84)
P-1	82° 4' 49.334" E	24° 8' 45.762" N
P-2	82° 4' 47.916" E	24° 8' 45.571" N
P-3	82° 4' 49.109" E	24° 8' 47.060" N
P-4	82° 4' 50.418" E	24° 8' 48.908" N
P-5	82° 4' 51.834" E	24° 8' 49.982" N
P-6	82° 4' 53.981" E	24° 8' 51.206" N
P-7	82° 4' 56.181" E	24° 8' 51.964" N
P-8	82° 4' 58.042" E	24° 8' 52.519" N
P-9	82° 4' 59.960" E	24° 8' 53.125" N
P-10	82° 5' 0.981" E	24° 8' 54.150" N
P-11	82° 5' 2.287" E	24° 8' 55.689" N
P-12	82° 5' 3.746" E	24° 8' 57.833" N
P-13	82° 5' 4.781" E	24° 8' 58.299" N
P-14	82° 5' 6.378" E	24° 8' 58.761" N
P-15	82° 5' 7.976" E	24° 8' 59.223" N
P-16	82° 5' 14.069" E	24° 8' 59.222" N
P-17	82° 5' 20.679" E	24° 8' 59.261" N
P-18	82° 5' 23.865" E	24° 8' 59.152" N
P-19	82° 5' 24.517" E	24° 8' 58.675" N
P-20	82° 5' 25.587" E	24° 8' 57.678" N
P-21	82° 5' 26.611" E	24° 8' 56.810" N
P-22	82° 5' 27.498" E	24° 8' 56.460" N
P-23	82° 5' 28.344" E	24° 8' 56.669" N
P-24	82° 5' 28.910" E	24° 8' 57.138" N
P-25	82° 5' 29.478" E	24° 8' 57.779" N
P-26	82° 5' 29.483" E	24° 8' 58.338" N
P-27	82° 5' 28.741" E	24° 8' 59.246" N
P-28	82° 5' 27.250" E	24° 9' 0.289" N
P-29	82° 5' 26.788" E	24° 9' 1.110" N
P-30	82° 5' 26.607" E	24° 9' 1.928" N
P-31	82° 5' 27.270" E	24° 9' 2.741" N
P-32	82° 5' 28.835" E	24° 9' 4.837" N
P-33	82° 5' 30.826" E	24° 9' 7.490" N
P-34	82° 5' 32.791" E	24° 9' 10.870" N
P-35	82° 5' 34.313" E	24° 9' 13.474" N
P-36	82° 5' 34.320" E	24° 9' 14.300" N
P-37	82° 5' 33.582" E	24° 9' 15.750" N
P-38	82° 5' 32.927" E	24° 9' 18.026" N
P-39	82° 5' 33.013" E	24° 9' 19.333" N
P-40	82° 5' 33.476" E	24° 9' 20.843" N
P-41	82° 5' 34.313" E	24° 9' 22.351" N
P-42	82° 5' 35.379" E	24° 9' 24.133" N
P-43	82° 5' 36.366" E	24° 9' 25.571" N
P-44	82° 5' 38.035" E	24° 9' 27.761" N
P-45	82° 5' 38.568" E	24° 9' 28.721" N
P-46	82° 5' 38.434" E	24° 9' 30.649" N
P-47	82° 5' 38.376" E	24° 9' 33.720" N

**Provisional Cardinal Points for BARIMAHULI Block**

POINT NO	Longitude (WGS84)	Latitude (WGS84)
P-48	82° 5' 38.109" E	24° 9' 35.356" N
P-49	82° 5' 38.256" E	24° 9' 36.172" N
P-50	82° 5' 38.786" E	24° 9' 37.846" N
P-51	82° 5' 39.314" E	24° 9' 39.304" N
P-52	82° 5' 40.077" E	24° 9' 40.847" N
P-53	82° 5' 41.264" E	24° 9' 42.602" N
P-54	82° 5' 42.122" E	24° 9' 44.274" N
P-55	82° 5' 43.214" E	24° 9' 45.814" N
P-56	82° 5' 45.172" E	24° 9' 44.553" N
P-57	82° 5' 47.085" E	24° 9' 43.593" N
P-58	82° 5' 48.811" E	24° 9' 42.505" N
P-59	82° 5' 50.024" E	24° 9' 41.937" N
P-60	82° 5' 51.290" E	24° 9' 41.885" N
P-61	82° 5' 53.066" E	24° 9' 41.840" N
P-62	82° 5' 54.753" E	24° 9' 41.828" N
P-63	82° 5' 55.832" E	24° 9' 41.949" N
P-64	82° 5' 57.148" E	24° 9' 42.327" N
P-65	82° 5' 59.123" E	24° 9' 43.001" N
P-66	82° 6' 1.569" E	24° 9' 43.972" N
P-67	82° 6' 3.216" E	24° 9' 44.735" N
P-68	82° 6' 5.190" E	24° 9' 45.322" N
P-69	82° 6' 7.590" E	24° 9' 46.380" N
P-70	82° 6' 10.129" E	24° 9' 47.308" N
P-71	82° 6' 12.759" E	24° 9' 47.891" N
P-72	82° 6' 13.919" E	24° 9' 46.464" N
P-73	82° 6' 15.450" E	24° 9' 44.646" N
P-74	82° 6' 15.593" E	24° 9' 44.903" N
P-75	82° 6' 15.603" E	24° 9' 46.064" N
P-76	82° 6' 15.707" E	24° 9' 47.268" N
P-77	82° 6' 15.860" E	24° 9' 48.686" N
P-78	82° 6' 16.008" E	24° 9' 49.545" N
P-79	82° 6' 16.910" E	24° 9' 50.829" N
P-80	82° 6' 17.668" E	24° 9' 51.770" N
P-81	82° 6' 17.860" E	24° 9' 52.284" N
P-82	82° 6' 17.627" E	24° 9' 52.458" N
P-83	82° 6' 17.113" E	24° 9' 52.634" N
P-84	82° 6' 11.348" E	24° 9' 52.805" N
P-85	82° 6' 5.818" E	24° 9' 53.017" N
P-86	82° 5' 57.617" E	24° 9' 53.334" N
P-87	82° 5' 54.524" E	24° 9' 53.442" N
P-88	82° 5' 53.597" E	24° 9' 54.610" N
P-89	82° 5' 52.159" E	24° 9' 56.384" N
P-90	82° 5' 51.185" E	24° 9' 57.681" N
P-91	82° 5' 50.219" E	24° 9' 59.796" N
P-92	82° 5' 49.438" E	24° 10' 1.651" N
P-93	82° 5' 48.707" E	24° 10' 3.936" N
P-94	82° 5' 48.480" E	24° 10' 4.797" N

**Provisional Cardinal Points for BARIMAHULI Block**

POINT NO	Longitude (WGS84)	Latitude (WGS84)
P-95	82° 5' 47.830" E	24° 10' 5.533" N
P-96	82° 5' 46.760" E	24° 10' 6.401" N
P-97	82° 5' 45.594" E	24° 10' 7.098" N
P-98	82° 5' 44.335" E	24° 10' 7.924" N
P-99	82° 5' 42.421" E	24° 10' 8.841" N
P-100	82° 5' 40.884" E	24° 10' 10.013" N
P-101	82° 5' 39.716" E	24° 10' 10.581" N
P-102	82° 5' 38.690" E	24° 10' 10.641" N
P-103	82° 5' 39.256" E	24° 10' 11.024" N
P-104	82° 5' 40.009" E	24° 10' 11.362" N
P-105	82° 5' 41.515" E	24° 10' 12.040" N
P-106	82° 5' 42.789" E	24° 10' 13.020" N
P-107	82° 5' 44.724" E	24° 10' 14.468" N
P-108	82° 5' 46.330" E	24° 10' 15.962" N
P-109	82° 5' 47.464" E	24° 10' 16.943" N
P-110	82° 5' 48.601" E	24° 10' 18.397" N
P-111	82° 5' 49.363" E	24° 10' 19.725" N
P-112	82° 5' 49.556" E	24° 10' 20.412" N
P-113	82° 5' 49.516" E	24° 10' 21.230" N
P-114	82° 5' 49.381" E	24° 10' 21.876" N
P-115	82° 5' 48.920" E	24° 10' 22.825" N
P-116	82° 5' 48.274" E	24° 10' 23.948" N
P-117	82° 5' 46.879" E	24° 10' 25.291" N
P-118	82° 5' 45.557" E	24° 10' 26.407" N
P-119	82° 5' 44.365" E	24° 10' 27.414" N
P-120	82° 5' 43.100" E	24° 10' 28.558" N
P-121	82° 5' 42.094" E	24° 10' 29.323" N
P-122	82° 5' 41.087" E	24° 10' 29.984" N
P-123	82° 5' 40.979" E	24° 10' 30.500" N
P-124	82° 5' 40.985" E	24° 10' 31.257" N
P-125	82° 5' 40.766" E	24° 10' 31.913" N
P-126	82° 5' 40.511" E	24° 10' 32.844" N
P-127	82° 5' 40.330" E	24° 10' 33.636" N
P-128	82° 5' 40.113" E	24° 10' 34.567" N
P-129	82° 5' 39.601" E	24° 10' 36.050" N
P-130	82° 5' 39.164" E	24° 10' 37.636" N
P-131	82° 5' 38.648" E	24° 10' 38.637" N
P-132	82° 5' 38.177" E	24° 10' 39.212" N
P-133	82° 5' 37.753" E	24° 10' 40.006" N
P-134	82° 5' 37.757" E	24° 10' 40.488" N
P-135	82° 5' 37.967" E	24° 10' 40.934" N
P-136	82° 5' 38.252" E	24° 10' 41.345" N
P-137	82° 5' 38.499" E	24° 10' 41.739" N
P-138	82° 5' 38.804" E	24° 10' 42.270" N
P-139	82° 5' 39.053" E	24° 10' 42.956" N
P-140	82° 5' 39.174" E	24° 10' 43.953" N
P-141	82° 5' 39.183" E	24° 10' 45.003" N

**Provisional Cardinal Points for BARIMAHULI Block**

POINT NO	Longitude (WGS84)	Latitude (WGS84)
P-142	82° 5' 39.174" E	24° 10' 46.069" N
P-143	82° 5' 38.938" E	24° 10' 47.062" N
P-144	82° 5' 38.876" E	24° 10' 48.052" N
P-145	82° 5' 38.998" E	24° 10' 48.567" N
P-146	82° 5' 39.736" E	24° 10' 49.852" N
P-147	82° 5' 42.135" E	24° 10' 53.555" N
P-148	82° 5' 43.104" E	24° 10' 54.526" N
P-149	82° 5' 47.546" E	24° 10' 54.413" N
P-150	82° 5' 48.017" E	24° 10' 54.415" N
P-151	82° 5' 55.123" E	24° 10' 54.440" N
P-152	82° 5' 54.983" E	24° 10' 54.431" N
P-153	82° 6' 25.254" E	24° 10' 54.540" N
P-154	82° 6' 38.239" E	24° 10' 53.644" N
P-155	82° 6' 54.809" E	24° 10' 52.780" N
P-156	82° 7' 4.676" E	24° 10' 51.132" N
P-157	82° 7' 4.371" E	24° 10' 51.311" N
P-158	82° 7' 5.476" E	24° 10' 51.127" N
P-159	82° 7' 14.157" E	24° 10' 48.961" N
P-160	82° 7' 26.788" E	24° 10' 48.558" N
P-161	82° 7' 27.138" E	24° 10' 48.547" N
P-162	82° 7' 37.022" E	24° 10' 48.663" N
P-163	82° 7' 47.890" E	24° 10' 50.584" N
P-164	82° 7' 47.774" E	24° 10' 49.941" N
P-165	82° 7' 47.648" E	24° 10' 48.378" N
P-166	82° 7' 47.711" E	24° 10' 45.567" N
P-167	82° 7' 47.677" E	24° 10' 41.914" N
P-168	82° 7' 47.706" E	24° 10' 40.092" N
P-169	82° 7' 47.711" E	24° 10' 39.746" N
P-170	82° 7' 47.756" E	24° 10' 36.891" N
P-171	82° 7' 47.753" E	24° 10' 35.566" N
P-172	82° 7' 47.753" E	24° 10' 35.541" N
P-173	82° 7' 47.734" E	24° 10' 28.109" N
P-174	82° 7' 47.744" E	24° 10' 24.156" N
P-175	82° 7' 47.745" E	24° 10' 23.855" N
P-176	82° 7' 47.771" E	24° 10' 13.121" N
P-177	82° 7' 47.974" E	24° 9' 52.262" N
P-178	82° 7' 47.990" E	24° 9' 46.485" N
P-179	82° 7' 47.993" E	24° 9' 45.178" N
P-180	82° 7' 48.017" E	24° 9' 36.401" N
P-181	82° 7' 47.646" E	24° 9' 25.406" N
P-182	82° 7' 47.550" E	24° 9' 22.498" N
P-183	82° 7' 47.374" E	24° 9' 13.260" N
P-184	82° 7' 47.376" E	24° 9' 4.537" N
P-185	82° 7' 47.376" E	24° 9' 4.331" N
P-186	82° 7' 47.385" E	24° 8' 32.857" N
P-187	82° 7' 47.386" E	24° 8' 31.416" N
P-188	82° 6' 16.642" E	24° 8' 51.318" N



**Provisional Cardinal Points for BARIMAHULI Block**

POINT NO	Longitude (WGS84)	Latitude (WGS84)
P-189	82° 6' 7.846" E	24° 8' 53.228" N
P-190	82° 5' 27.538" E	24° 8' 49.453" N
P-191	82° 5' 20.994" E	24° 8' 48.833" N
P-192	82° 5' 13.371" E	24° 8' 48.070" N