

**BARAPARA BLOCK SUMMARY  
PART A**

S.No.	Features	Details
<b>1.</b>	<b>Location</b>	
	Coal Block	Barapara
	Latitude	23° 15' 21" N-23° 20' 24" N (Provisional)
	Longitude	82° 57' 57" E-83° 04' 30" E (Provisional)
	Topo Sheet No.	64 M/3
	Coalfield	Bisrampur
	Villages	Bundiya,Barpara,Ghogra,Sirki,Batra,Sudamanagar,Tamor,Chikni
	Tehsil/Taluka	
	District	Surguja
	State	Chhattisgarh
<b>2.</b>	<b>Connectivity with Block</b>	
	Nearest Rail Head	The nearest railway Station is Ambikapur which is also the terminus of Manendragarh-Ambikapur rail link of South-Eastern Railway.
	Road	The Ambikapur- Manedragarh state highway SH-14 is located about 10 km. south of the block and the Ambikapur-Partappur state highway SH-5 is located about 4 km. east of the block. The block is connected with both these highways by fair weather roads.
	Airport	Raipur
<b>3.</b>	<b>Area</b>	
	Geological Block Area	57.13 sq km (Asper shape file. Refer note below)
	Forest Area	1.2 sq.km ( As per FSI)
	Non-Forest Area	55.93 sq.km
<b>4.</b>	<b>Climate and Topography</b>	
	Average Annual Rainfall	Average annual rainfall ranges between 19.75mm in winter to 333.10mm in monsoon season.
	Temperature (Min. — Max.)	The temperature in winter ranges between 4.4 °C – 26.5°C and the summer temperature ranges between 21.6 °C - 42.7 °C.

	Local Surface Drainage Channels	Two main nalas –Gobrinala and Jhanpinala are flowing in the southern part of the block				
	Rivers	Mahan river is located north-west to Barapara block which flows northerly.				
<b>5.</b>	<b>Exploration</b>					
	Status	Regionally Explored				
	Exploration Agency	MECL				
	Total Number of Boreholes with	38 boreholes & 3957.00 m				
	Borehole Density	0.95 boreholes per sq km				
	General Dip of Seams	The beds show a gentle dip of almost flat to 5.4°.				
	General Strike Direction	The strike of coal bed varies from N70°W – S70°E to NW-SE in the northern part of the block. It takes swings and becomes NNE-SSW to N 60°W – S60°E in the central part of the block. The strike becomes NW-SE to N35°W – S35°E in the southern part of the block				
	Faults	A total of 9 faults designated serially from north to south viz. F1 to F9 have been deciphered in Barapara block. The throw varies from 5m - >200m				
<b>6.</b>	<b>Coal Seams &amp; Reserve</b>					
	Number of Coal Seams	17				
	Coal Seams	Thickness Range (m)	Depth Range (m)	Resources (mt)		Grade
				Indicated	Inferred	
	Seam-X Bot	0.45-1.32	25.50-45.45			G14
	Seam –IX Top	1.50-2.83	17.50-90.15	8.813		G13-G8
	Seam -IX Middle	0.45-1.32	19.90-94.45			
	Seam –IX Bottom	0.28-3.60	24.80-100.10	7.445		G15-G10
	Seam –L8	0.10-1.00	44.80-110.65			
	Seam-L7	0.36-1.28	52.36-114.52			
	Seam -VIII	0.20-1.12	72.80-149.55			G5
	Seam-L6	0.05-0.50	85.75-157.05			

	Seam-VII	0.12-0.69	91.90-170.34			
	Seam -L4	0.50-0.79	104.50-185.00			
	Seam -V	0.20-2.27	10.40-201.50			G7
	Seam -L2	0.20-0.96	31.60-148.00			G11
	Seam-III Top	0.40-0.85	85.75-157.05			G10
	Seam-III Bot	0.04-1.30	12.97-224.20	2.664	1.834	G9-G4
	Seam -II	0.05-0.60	20.30-245.22			
	Seam -L1	0.05-0.90	25.00-255.44			
	Seam -I	0.08-0.58	44.38-88.00			
	<b>Total</b>			<b>18.922</b>	<b>1.834</b>	
<b>7.</b>	<b>Surface Constraints</b>	Songara Protected Forest, Don Protected Forest, Pasang Reserved Forest; Pond; Railway Line; Bundiya, Barpara, Ghogra, Sirki, Batra, Sudamanagar, Tamor, Chikni Villages				
<b>8.</b>	<b>Grade of coal</b>	G11 (Provisional) based on weighted average grade as per grade-wise data available in Regional GR.				
<b>9.</b>	<b>Decision Support System (DSS) Analysis</b>	Hydrology info: The polygon touches major river(s); Gobri Nadi Wildlife info: The polygon touches Wildlife Habitat(s), Sloth Bear				
<b>10.</b>	<b>Eco Sensitive Zone (ESZ)</b>	NW boundary of the block is approx. 1.8 km from the boundary of TR-PA of Tamorpingla and 20 km from the boundary of ESZ of Tamorpingla. Approx. 22 km from the boundary of tiger corridor connecting Tamorpingla and Semarsot. Southern boundary of the block is approx. 35 km from the boundary of buffer zone of unnotified Lemru Elephant Reserve.				

**Note:**

1. The summary has been compiled from 'Geological report on Regional exploration for coal in Barapara block, Bisrampur coalfield, Surguja district, Chhattisgarh, MECL, August 2015'.
2. The area explored as per the regional report by MECL is about 40 sq.km while the area of the Barapara block is 57.13 sq.km

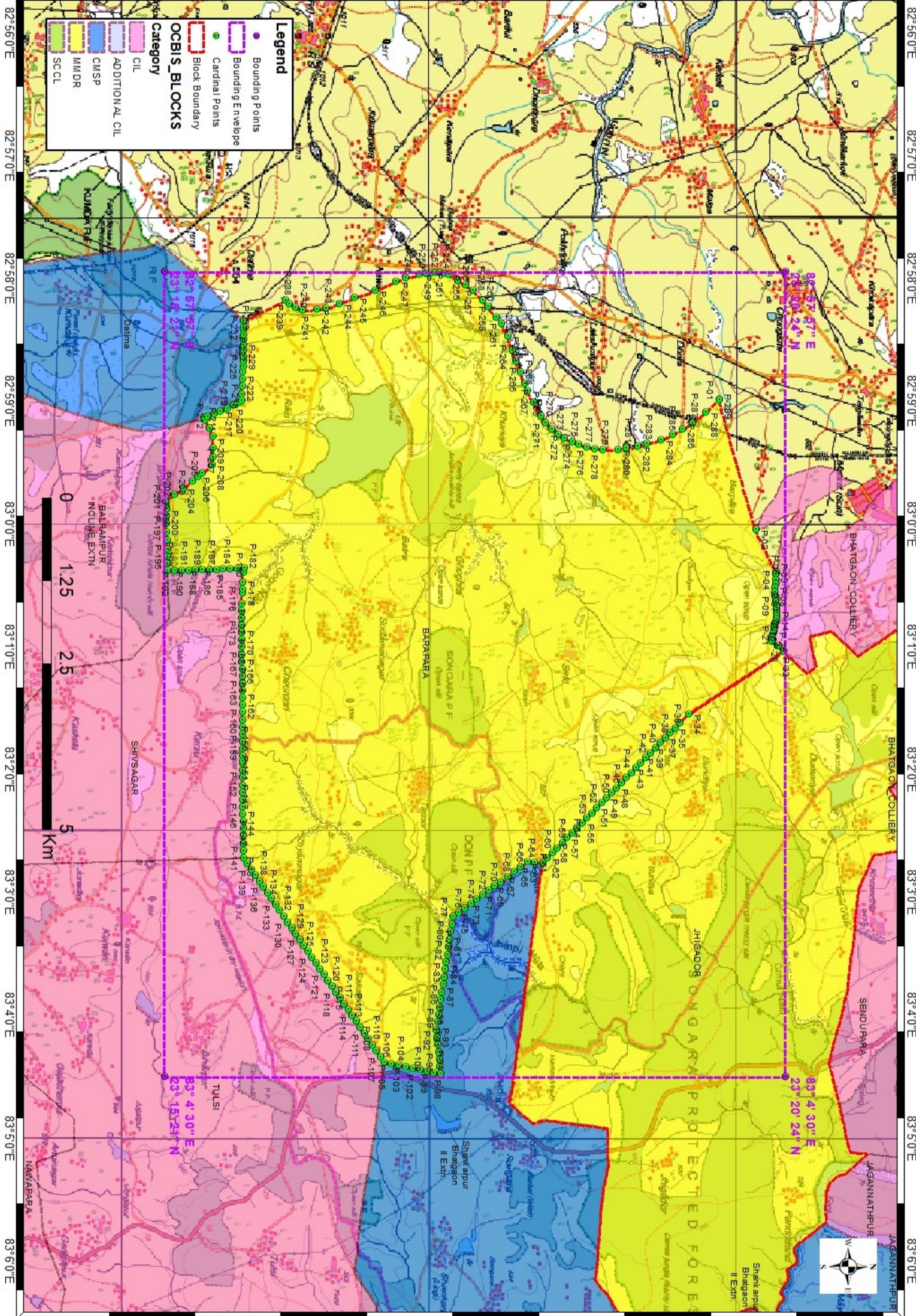
**Disclaimer:**

1. The analysis is done on Beta-version (Trial Version) of Decision Support System (DSS) of FSI / MOEF.
2. The Decision Rules for various parameters of this DSS System are controlled by FSI.
3. CMPDI only runs this DSS to obtain the status of any block based on these Decision Rules.
4. The database of the Decision Rules is updated by FSI from time to time.
5. CMPDI does not own any responsibility for variation in the results which are based on the Decision Rules of the FSI DSS in case of any updation of the database at FSI end.
6. ESZ analysis and tiger habitat/ corridor given here is based on the information available in public domain. Bidders are encouraged to verify this information and any other information additionally available.





23°15'0"N 23°16'0"N 23°17'0"N 23°18'0"N 23°19'0"N 23°20'0"N 23°21'0"N



**Barapara Block, Bishrampur Coalfield**

**FOR INTERNAL/RESTRICTED USE ONLY**

82°56'0"E 82°57'0"E 82°58'0"E 82°59'0"E 83°0'0"E 83°1'0"E 83°2'0"E 83°3'0"E 83°4'0"E 83°5'0"E 83°6'0"E

82°56'0"E 82°57'0"E 82°58'0"E 82°59'0"E 83°0'0"E 83°1'0"E 83°2'0"E 83°3'0"E 83°4'0"E 83°5'0"E 83°6'0"E

23°15'0"N 23°16'0"N 23°17'0"N 23°18'0"N 23°19'0"N 23°20'0"N 23°21'0"N

**Legend**

- Bounding Points
- Bounding Envelope
- Cardinal Points
- Block Boundary

**OCBS\_BLOCKS**

- ADDITIONAL CIL
- CIL
- CMSP
- MMDR
- SCCL





**Provisional Cardinal Points for BARAPARA Block**

POINT NO	Longitude (WGS84)	Latitude (WGS84)
P-1	82° 58' 59.485" E	23° 19' 51.813" N
P-2	83° 0' 3.063" E	23° 20' 9.499" N
P-3	83° 0' 23.966" E	23° 20' 19.490" N
P-4	83° 0' 24.972" E	23° 20' 19.339" N
P-5	83° 0' 27.412" E	23° 20' 19.105" N
P-6	83° 0' 29.412" E	23° 20' 19.046" N
P-7	83° 0' 31.144" E	23° 20' 18.979" N
P-8	83° 0' 33.414" E	23° 20' 18.932" N
P-9	83° 0' 35.141" E	23° 20' 18.933" N
P-10	83° 0' 36.185" E	23° 20' 18.984" N
P-11	83° 0' 37.851" E	23° 20' 19.216" N
P-12	83° 0' 40.282" E	23° 20' 19.558" N
P-13	83° 0' 41.144" E	23° 20' 19.675" N
P-14	83° 0' 42.693" E	23° 20' 19.760" N
P-15	83° 0' 44.205" E	23° 20' 19.734" N
P-16	83° 0' 45.510" E	23° 20' 19.616" N
P-17	83° 0' 46.463" E	23° 20' 19.437" N
P-18	83° 0' 47.797" E	23° 20' 19.124" N
P-19	83° 0' 48.644" E	23° 20' 18.834" N
P-20	83° 0' 49.374" E	23° 20' 18.659" N
P-21	83° 0' 49.736" E	23° 20' 18.587" N
P-22	83° 0' 50.524" E	23° 20' 18.566" N
P-23	83° 0' 51.033" E	23° 20' 18.531" N
P-24	83° 0' 51.979" E	23° 20' 18.511" N
P-25	83° 0' 52.721" E	23° 20' 18.357" N
P-26	83° 0' 53.729" E	23° 20' 18.074" N
P-27	83° 0' 54.992" E	23° 20' 17.613" N
P-28	83° 0' 55.413" E	23° 20' 17.473" N
P-29	83° 0' 56.813" E	23° 20' 16.831" N
P-30	83° 0' 57.448" E	23° 20' 17.389" N
P-31	83° 0' 57.263" E	23° 20' 17.480" N
P-32	83° 0' 59.838" E	23° 20' 20.310" N
P-33	83° 1' 2.413" E	23° 20' 23.140" N
P-34	83° 1' 33.039" E	23° 19' 36.877" N
P-35	83° 1' 37.393" E	23° 19' 32.539" N
P-36	83° 1' 39.834" E	23° 19' 30.141" N
P-37	83° 1' 42.276" E	23° 19' 27.743" N
P-38	83° 1' 44.717" E	23° 19' 25.345" N
P-39	83° 1' 47.159" E	23° 19' 22.947" N
P-40	83° 1' 49.600" E	23° 19' 20.549" N
P-41	83° 1' 52.042" E	23° 19' 18.151" N
P-42	83° 1' 54.483" E	23° 19' 15.753" N
P-43	83° 1' 56.924" E	23° 19' 13.355" N
P-44	83° 1' 59.366" E	23° 19' 10.957" N
P-45	83° 2' 1.807" E	23° 19' 8.559" N
P-46	83° 2' 4.248" E	23° 19' 6.161" N
P-47	83° 2' 6.689" E	23° 19' 3.763" N

**Provisional Cardinal Points for BARAPARA Block**

POINT NO	Longitude (WGS84)	Latitude (WGS84)
P-48	83° 2' 9.131" E	23° 19' 1.365" N
P-49	83° 2' 11.572" E	23° 18' 58.967" N
P-50	83° 2' 14.013" E	23° 18' 56.569" N
P-51	83° 2' 16.454" E	23° 18' 54.171" N
P-52	83° 2' 18.895" E	23° 18' 51.773" N
P-53	83° 2' 21.336" E	23° 18' 49.375" N
P-54	83° 2' 23.777" E	23° 18' 46.976" N
P-55	83° 2' 26.218" E	23° 18' 44.578" N
P-56	83° 2' 28.660" E	23° 18' 42.180" N
P-57	83° 2' 31.101" E	23° 18' 39.782" N
P-58	83° 2' 33.541" E	23° 18' 37.384" N
P-59	83° 2' 35.982" E	23° 18' 34.985" N
P-60	83° 2' 38.423" E	23° 18' 32.587" N
P-61	83° 2' 40.864" E	23° 18' 30.189" N
P-62	83° 2' 43.305" E	23° 18' 27.791" N
P-63	83° 2' 45.746" E	23° 18' 25.393" N
P-64	83° 2' 45.546" E	23° 18' 21.704" N
P-65	83° 2' 45.346" E	23° 18' 18.015" N
P-66	83° 2' 47.766" E	23° 18' 14.742" N
P-67	83° 2' 50.186" E	23° 18' 11.468" N
P-68	83° 2' 52.605" E	23° 18' 8.195" N
P-69	83° 2' 55.025" E	23° 18' 4.922" N
P-70	83° 2' 57.150" E	23° 18' 2.012" N
P-71	83° 2' 59.275" E	23° 17' 59.102" N
P-72	83° 3' 1.401" E	23° 17' 56.193" N
P-73	83° 3' 3.526" E	23° 17' 53.283" N
P-74	83° 3' 5.651" E	23° 17' 50.373" N
P-75	83° 3' 7.776" E	23° 17' 47.464" N
P-76	83° 3' 9.901" E	23° 17' 44.554" N
P-77	83° 3' 12.026" E	23° 17' 41.644" N
P-78	83° 3' 15.714" E	23° 17' 41.106" N
P-79	83° 3' 19.402" E	23° 17' 40.567" N
P-80	83° 3' 23.089" E	23° 17' 40.028" N
P-81	83° 3' 26.777" E	23° 17' 39.490" N
P-82	83° 3' 30.464" E	23° 17' 38.951" N
P-83	83° 3' 34.152" E	23° 17' 38.413" N
P-84	83° 3' 37.840" E	23° 17' 37.874" N
P-85	83° 3' 41.527" E	23° 17' 37.335" N
P-86	83° 3' 45.215" E	23° 17' 36.797" N
P-87	83° 3' 48.902" E	23° 17' 36.258" N
P-88	83° 3' 52.590" E	23° 17' 35.719" N
P-89	83° 3' 56.277" E	23° 17' 35.180" N
P-90	83° 3' 59.965" E	23° 17' 34.641" N
P-91	83° 4' 3.652" E	23° 17' 34.103" N
P-92	83° 4' 7.340" E	23° 17' 33.564" N
P-93	83° 4' 10.951" E	23° 17' 33.925" N
P-94	83° 4' 14.563" E	23° 17' 34.286" N

**Provisional Cardinal Points for BARAPARA Block**

POINT NO	Longitude (WGS84)	Latitude (WGS84)
P-95	83° 4' 18.174" E	23° 17' 34.648" N
P-96	83° 4' 21.786" E	23° 17' 35.009" N
P-97	83° 4' 25.398" E	23° 17' 35.370" N
P-98	83° 4' 29.009" E	23° 17' 35.731" N
P-99	83° 4' 28.286" E	23° 17' 32.297" N
P-100	83° 4' 27.563" E	23° 17' 28.862" N
P-101	83° 4' 26.840" E	23° 17' 25.428" N
P-102	83° 4' 26.117" E	23° 17' 21.993" N
P-103	83° 4' 25.394" E	23° 17' 18.559" N
P-104	83° 4' 24.671" E	23° 17' 15.124" N
P-105	83° 4' 23.947" E	23° 17' 11.690" N
P-106	83° 4' 23.224" E	23° 17' 8.255" N
P-107	83° 4' 20.370" E	23° 17' 6.285" N
P-108	83° 4' 17.515" E	23° 17' 4.314" N
P-109	83° 4' 14.660" E	23° 17' 2.343" N
P-110	83° 4' 11.805" E	23° 17' 0.373" N
P-111	83° 4' 8.950" E	23° 16' 58.402" N
P-112	83° 4' 6.095" E	23° 16' 56.432" N
P-113	83° 4' 3.241" E	23° 16' 54.461" N
P-114	83° 4' 0.386" E	23° 16' 52.490" N
P-115	83° 3' 57.531" E	23° 16' 50.520" N
P-116	83° 3' 54.676" E	23° 16' 48.549" N
P-117	83° 3' 51.822" E	23° 16' 46.578" N
P-118	83° 3' 48.967" E	23° 16' 44.607" N
P-119	83° 3' 46.113" E	23° 16' 42.637" N
P-120	83° 3' 43.258" E	23° 16' 40.666" N
P-121	83° 3' 40.403" E	23° 16' 38.695" N
P-122	83° 3' 37.549" E	23° 16' 36.724" N
P-123	83° 3' 34.694" E	23° 16' 34.754" N
P-124	83° 3' 31.840" E	23° 16' 32.783" N
P-125	83° 3' 28.985" E	23° 16' 30.812" N
P-126	83° 3' 26.131" E	23° 16' 28.841" N
P-127	83° 3' 23.276" E	23° 16' 26.870" N
P-128	83° 3' 20.422" E	23° 16' 24.899" N
P-129	83° 3' 17.568" E	23° 16' 22.929" N
P-130	83° 3' 14.713" E	23° 16' 20.958" N
P-131	83° 3' 11.859" E	23° 16' 18.987" N
P-132	83° 3' 9.005" E	23° 16' 17.016" N
P-133	83° 3' 6.150" E	23° 16' 15.045" N
P-134	83° 3' 3.296" E	23° 16' 13.074" N
P-135	83° 3' 0.442" E	23° 16' 11.103" N
P-136	83° 2' 57.587" E	23° 16' 9.132" N
P-137	83° 2' 54.733" E	23° 16' 7.161" N
P-138	83° 2' 51.879" E	23° 16' 5.190" N
P-139	83° 2' 49.025" E	23° 16' 3.219" N
P-140	83° 2' 46.171" E	23° 16' 1.248" N
P-141	83° 2' 43.317" E	23° 15' 59.277" N



**Provisional Cardinal Points for BARAPARA Block**

POINT NO	Longitude (WGS84)	Latitude (WGS84)
P-142	83° 2' 39.767" E	23° 15' 59.256" N
P-143	83° 2' 36.217" E	23° 15' 59.235" N
P-144	83° 2' 32.667" E	23° 15' 59.214" N
P-145	83° 2' 29.117" E	23° 15' 59.193" N
P-146	83° 2' 25.567" E	23° 15' 59.173" N
P-147	83° 2' 22.017" E	23° 15' 59.152" N
P-148	83° 2' 18.467" E	23° 15' 59.131" N
P-149	83° 2' 14.917" E	23° 15' 59.110" N
P-150	83° 2' 11.367" E	23° 15' 59.089" N
P-151	83° 2' 7.817" E	23° 15' 59.068" N
P-152	83° 2' 4.267" E	23° 15' 59.046" N
P-153	83° 2' 0.717" E	23° 15' 59.025" N
P-154	83° 1' 57.167" E	23° 15' 59.004" N
P-155	83° 1' 56.095" E	23° 15' 58.998" N
P-156	83° 1' 53.617" E	23° 15' 58.983" N
P-157	83° 1' 50.067" E	23° 15' 58.962" N
P-158	83° 1' 46.517" E	23° 15' 58.941" N
P-159	83° 1' 42.967" E	23° 15' 58.920" N
P-160	83° 1' 39.417" E	23° 15' 58.898" N
P-161	83° 1' 35.867" E	23° 15' 58.877" N
P-162	83° 1' 32.317" E	23° 15' 58.856" N
P-163	83° 1' 28.767" E	23° 15' 58.835" N
P-164	83° 1' 25.217" E	23° 15' 58.813" N
P-165	83° 1' 21.667" E	23° 15' 58.792" N
P-166	83° 1' 18.117" E	23° 15' 58.771" N
P-167	83° 1' 14.567" E	23° 15' 58.749" N
P-168	83° 1' 11.017" E	23° 15' 58.728" N
P-169	83° 1' 7.467" E	23° 15' 58.706" N
P-170	83° 1' 3.917" E	23° 15' 58.685" N
P-171	83° 1' 0.367" E	23° 15' 58.664" N
P-172	83° 0' 56.817" E	23° 15' 58.642" N
P-173	83° 0' 53.267" E	23° 15' 58.621" N
P-174	83° 0' 49.717" E	23° 15' 58.599" N
P-175	83° 0' 46.167" E	23° 15' 58.578" N
P-176	83° 0' 42.617" E	23° 15' 58.556" N
P-177	83° 0' 39.067" E	23° 15' 58.534" N
P-178	83° 0' 33.729" E	23° 15' 58.866" N
P-179	83° 0' 32.147" E	23° 15' 58.940" N
P-180	83° 0' 28.778" E	23° 15' 59.097" N
P-181	83° 0' 23.979" E	23° 15' 59.523" N
P-182	83° 0' 21.903" E	23° 15' 59.702" N
P-183	83° 0' 22.019" E	23° 15' 56.307" N
P-184	83° 0' 22.134" E	23° 15' 52.912" N
P-185	83° 0' 22.250" E	23° 15' 49.517" N
P-186	83° 0' 22.366" E	23° 15' 46.121" N
P-187	83° 0' 22.482" E	23° 15' 42.726" N
P-188	83° 0' 22.598" E	23° 15' 39.331" N

**Provisional Cardinal Points for BARAPARA Block**

POINT NO	Longitude (WGS84)	Latitude (WGS84)
P-189	83° 0' 22.714" E	23° 15' 35.936" N
P-190	83° 0' 22.830" E	23° 15' 32.541" N
P-191	83° 0' 22.946" E	23° 15' 29.146" N
P-192	83° 0' 23.062" E	23° 15' 25.750" N
P-193	83° 0' 23.178" E	23° 15' 22.355" N
P-194	83° 0' 19.567" E	23° 15' 22.268" N
P-195	83° 0' 15.956" E	23° 15' 22.182" N
P-196	83° 0' 12.345" E	23° 15' 22.095" N
P-197	83° 0' 8.238" E	23° 15' 21.990" N
P-198	83° 0' 4.131" E	23° 15' 21.886" N
P-199	83° 0' 0.024" E	23° 15' 21.782" N
P-200	82° 59' 56.399" E	23° 15' 21.675" N
P-201	82° 59' 52.774" E	23° 15' 21.568" N
P-202	82° 59' 49.149" E	23° 15' 21.462" N
P-203	82° 59' 45.981" E	23° 15' 25.535" N
P-204	82° 59' 42.596" E	23° 15' 29.894" N
P-205	82° 59' 39.102" E	23° 15' 34.384" N
P-206	82° 59' 36.950" E	23° 15' 37.096" N
P-207	82° 59' 35.256" E	23° 15' 39.311" N
P-208	82° 59' 31.595" E	23° 15' 44.125" N
P-209	82° 59' 27.365" E	23° 15' 44.288" N
P-210	82° 59' 23.136" E	23° 15' 44.450" N
P-211	82° 59' 17.233" E	23° 15' 44.698" N
P-212	82° 59' 13.421" E	23° 15' 42.739" N
P-213	82° 59' 9.610" E	23° 15' 40.780" N
P-214	82° 59' 8.186" E	23° 15' 40.015" N
P-215	82° 59' 7.683" E	23° 15' 41.749" N
P-216	82° 59' 6.514" E	23° 15' 44.872" N
P-217	82° 59' 5.236" E	23° 15' 48.059" N
P-218	82° 59' 3.832" E	23° 15' 51.301" N
P-219	82° 59' 2.273" E	23° 15' 54.644" N
P-220	82° 59' 1.337" E	23° 15' 56.480" N
P-221	82° 59' 0.581" E	23° 15' 57.720" N
P-222	82° 59' 0.019" E	23° 15' 58.549" N
P-223	82° 58' 57.044" E	23° 15' 58.659" N
P-224	82° 58' 52.974" E	23° 15' 58.804" N
P-225	82° 58' 49.501" E	23° 15' 58.910" N
P-226	82° 58' 45.998" E	23° 15' 59.054" N
P-227	82° 58' 43.092" E	23° 15' 59.180" N
P-228	82° 58' 40.559" E	23° 15' 59.210" N
P-229	82° 58' 38.463" E	23° 15' 59.371" N
P-230	82° 58' 35.463" E	23° 15' 59.435" N
P-231	82° 58' 32.936" E	23° 15' 59.450" N
P-232	82° 58' 30.174" E	23° 15' 59.422" N
P-233	82° 58' 27.800" E	23° 15' 59.498" N
P-234	82° 58' 25.498" E	23° 15' 59.448" N
P-235	82° 58' 24.631" E	23° 15' 59.348" N

**Provisional Cardinal Points for BARAPARA Block**

POINT NO	Longitude (WGS84)	Latitude (WGS84)
P-236	82° 58' 21.548" E	23° 15' 59.260" N
P-237	82° 58' 21.144" E	23° 15' 59.238" N
P-238	82° 58' 10.713" E	23° 16' 19.926" N
P-239	82° 58' 12.525" E	23° 16' 21.606" N
P-240	82° 58' 14.579" E	23° 16' 24.599" N
P-241	82° 58' 15.609" E	23° 16' 28.172" N
P-242	82° 58' 15.489" E	23° 16' 35.165" N
P-243	82° 58' 14.967" E	23° 16' 39.557" N
P-244	82° 58' 12.553" E	23° 16' 46.321" N
P-245	82° 58' 9.785" E	23° 16' 53.657" N
P-246	82° 58' 6.019" E	23° 17' 3.457" N
P-247	82° 58' 1.561" E	23° 17' 13.626" N
P-248	82° 57' 59.877" E	23° 17' 18.756" N
P-249	82° 57' 58.241" E	23° 17' 25.252" N
P-250	82° 57' 57.646" E	23° 17' 28.458" N
P-251	82° 57' 57.376" E	23° 17' 31.016" N
P-252	82° 57' 57.155" E	23° 17' 33.057" N
P-253	82° 57' 57.183" E	23° 17' 34.966" N
P-254	82° 57' 57.636" E	23° 17' 37.333" N
P-255	82° 57' 58.421" E	23° 17' 39.387" N
P-256	82° 58' 1.116" E	23° 17' 44.127" N
P-257	82° 58' 3.324" E	23° 17' 48.046" N
P-258	82° 58' 6.196" E	23° 17' 51.519" N
P-259	82° 58' 10.903" E	23° 17' 56.336" N
P-260	82° 58' 13.902" E	23° 17' 58.955" N
P-261	82° 58' 19.379" E	23° 18' 2.937" N
P-262	82° 58' 22.326" E	23° 18' 5.170" N
P-263	82° 58' 28.190" E	23° 18' 8.235" N
P-264	82° 58' 35.257" E	23° 18' 10.769" N
P-265	82° 58' 40.544" E	23° 18' 12.551" N
P-266	82° 58' 45.835" E	23° 18' 14.635" N
P-267	82° 58' 51.673" E	23° 18' 16.734" N
P-268	82° 58' 54.977" E	23° 18' 18.197" N
P-269	82° 59' 0.863" E	23° 18' 21.197" N
P-270	82° 59' 7.409" E	23° 18' 24.662" N
P-271	82° 59' 10.654" E	23° 18' 26.921" N
P-272	82° 59' 13.861" E	23° 18' 29.675" N
P-273	82° 59' 16.611" E	23° 18' 33.037" N
P-274	82° 59' 18.423" E	23° 18' 35.960" N
P-275	82° 59' 20.039" E	23° 18' 39.701" N
P-276	82° 59' 21.364" E	23° 18' 42.759" N
P-277	82° 59' 22.495" E	23° 18' 46.787" N
P-278	82° 59' 23.418" E	23° 18' 50.946" N
P-279	82° 59' 23.778" E	23° 18' 54.789" N
P-280	82° 59' 23.865" E	23° 19' 2.184" N
P-281	82° 59' 23.159" E	23° 19' 6.342" N
P-282	82° 59' 22.075" E	23° 19' 11.752" N

**Provisional Cardinal Points for BARAPARA Block**

POINT NO	Longitude (WGS84)	Latitude (WGS84)
P-283	82° 59' 21.045" E	23° 19' 16.022" N
P-284	82° 59' 19.008" E	23° 19' 23.100" N
P-285	82° 59' 16.677" E	23° 19' 29.106" N
P-286	82° 59' 13.904" E	23° 19' 33.635" N
P-287	82° 59' 10.674" E	23° 19' 38.728" N
P-288	82° 59' 5.715" E	23° 19' 44.983" N