

### Bapeu Lignite Block Summary

Sr.No.	Features	Details
<b>1</b>	<b>Location</b>	
	Lignite Block	Bapeu
	Latitude	Latitude (N): 27° 50' 34" - 27° 54' 46" N
	Longitude	Longitude (E): 73° 54' 24" - 73° 57' 57" E
	Topo Sheet No.	45 E/13
	Lignite Field	Bikaner Lignite Field
	Villages	-
	Tehsil/Taluka	Sri-Dungargarh
	District	Bikaner
	State	Rajasthan
<b>2</b>	<b>Connectivity with Block</b>	
	Nearest Rail Head	Sri-Dungargarh (35 km north) on Sri-Dungargarh-Ratangarh section of Northern Railway.
	Road	Bapeu block is approachable from Kalyansar-Naya village by a fair weathered road (10 km). Kalyansar-Naya village is connected to Sri-Dungargarh town by an all weathered road (25 km). Sri-Dungargarh town a Tahsil place is connected to Bikaner a district head quarter (65 km) through Bikaner-Ratangarh National Highway No.11.
	Airport	Jaipur
<b>3</b>	<b>Area</b>	
	Geological Block Area	17.7 Sq.km
	Forest Area	No forest as per topo sheet
	Non-Forest Area	17.7 Sq.km
<b>4</b>	<b>Climate and Topography</b>	
	Average Annual Rainfall	The average annual rainfall is 230 mm.
	Temperature (Min.-Max. in°C)	5 to 48
	Local Surface Drainage Channels	The area is devoid of any drainage pattern. Local streamlets fed by rain water die out at very short distance due to sandy nature of the area.
	Rivers	Nil
<b>5</b>	<b>Exploration:</b>	
	Status	Regionally explored on 800m grid borehole spacing.
	Exploration Agency	Mineral Exploration Corporation Ltd., (MECL)
	Explored Area (as per GR)	39.256 Sq. km (Appx.) as per GR.
	Total Number of Boreholes with metreage	39 boreholes & 5951.00 m
	Borehole Density	1.0
	General Dip of Seams	The amount of dip is 1.4° in the south-western part, the amount of dip varies between 2.5° to 3.5° in the central part and in the northern part it is 2.9°.

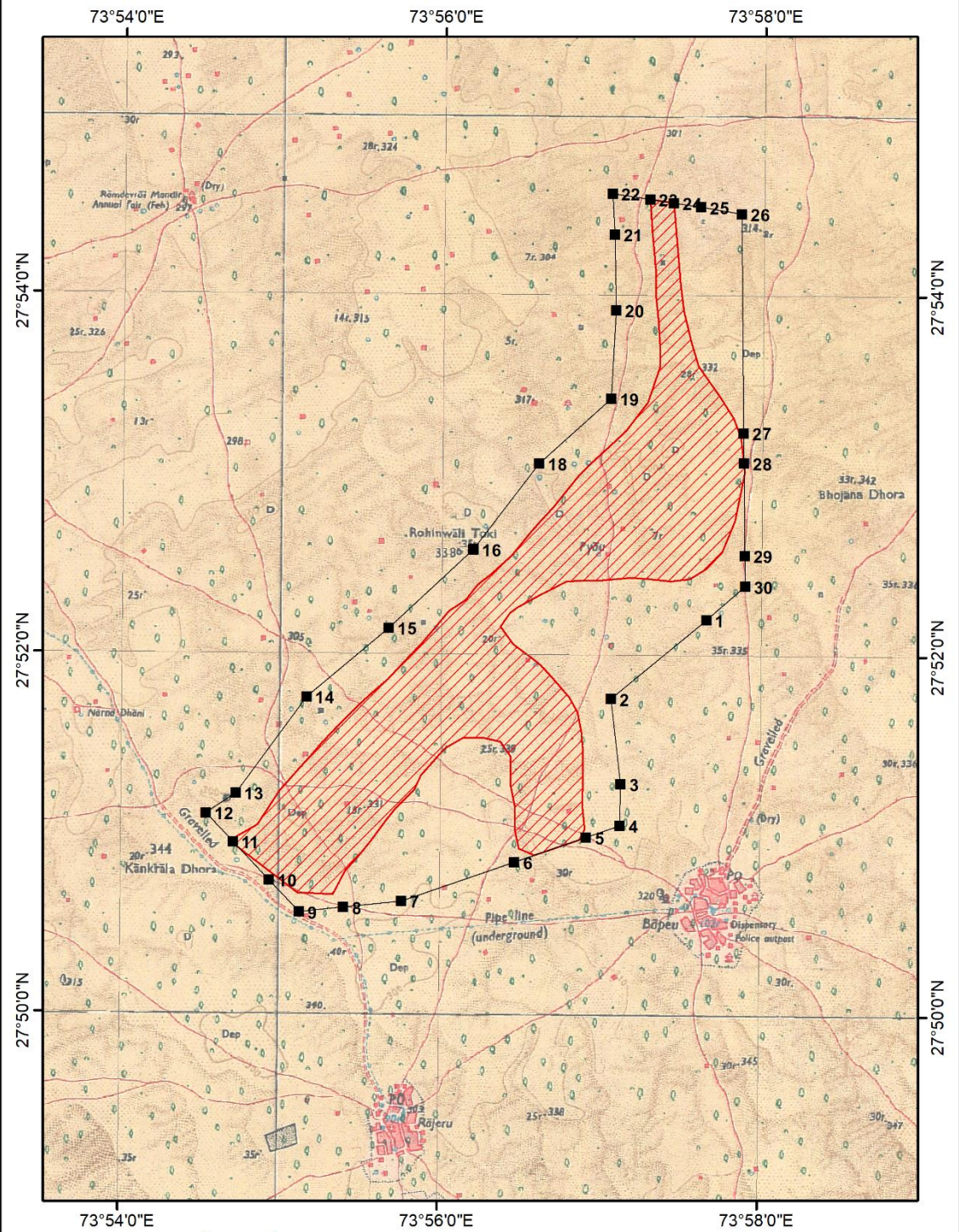
	General Strike Direction	NE-SW with local undulations and warping			
	Faults	Devoid of fault			
	Depth range of Lignite seam	83.00m to 143.50m			
<b>6</b>	<b>Lignite Reserve: Indicated Category</b>				
	Grade-wise	Grade: GCV Range (K.Cal/Kg.)	Area (Sq km)	Gross Reserves (MT)	Reserves %
		C: 1001-1500	4.465	14.486	40.71%
		C: 1501-2000	3.967	18.421	51.77%
		B: 2001-2500	0.321	2.677	7.52%
		<b>Total</b>	<b>8.753</b>	<b>35.584</b>	<b>100%</b>
	Ratio-wise	Lignite to OB+IB Ratio	Area (Sq km)	Gross Reserves (m.t.)	Reserves %
		< 1:15	0.310	2.502	7.03%
		> 1:15	8.443	33.082	92.97%
		<b>Total</b>	<b>8.753</b>	<b>35.584</b>	<b>100%</b>
<b>7</b>	<b>Surface Constraints</b>	Nil			
<b>8</b>	<b>Grade of Lignite</b>	C (Provisional). Based on Grade wise data available in GR. Block weighted average of GCV is 1610 K.Cal/Kg.			
<b>9</b>	<b>Decision Support System (DSS) Analysis</b>	-			
<b>10</b>	<b>Eco Sensitive Zone (ESZ)</b>	Talchhapar WLS is at about 45Km in the East direction from the block.			
<b>11</b>	<b>Remarks</b>	Regional exploration on 800 m grid interval completed. Detailed exploration to be carried out.			

- Note:**
1. The summary has been compiled from "Geological Report on Exploration for Lignite, Bapeu Block, Bikaner District, Rajasthan-July 2007, prepared by Mineral Exploration Corporation Ltd., Nagpur.
  2. The Exploration block area mentioned above is as given in the Geological report, which may vary after DGPS survey.

**Disclaimer:**

1. The analysis is done on Beta-version (Trial Version) of Decision Support System (DSS) of FSI/ MOEF.
2. The Decision Rules for various parameters of this DSS System are controlled by FSI.
3. CMPDI only runs this DSS to obtain the status of any block based on these Decision Rules.
4. The database of the Decision Rules is updated by FSI from time to time.
5. CMPDI does not own any responsibility for variation in the results which are based on the decision Rules of the FSI DSS in case of any updation of the database at FSI end.
6. ESZ analysis and tiger habitat/ corridor given here is based on the information available in public domain. Bidders are encouraged to verify this information and any other information additionally available.

**BAPEU LIGNITE BLOCK- BIKANER LIGNITE FIELD, BIKANER DISTRICT,  
RAJASTHAN**  
Part of SOI Toposheet - 45E/13



**Legend**

- Exploration Block Boundary
- Lignite Development Boundary



**Provisional cardinal Points for Bapeu Lignite Block, Bikaner District, Rajasthan.**

Boundary Point	Latitude (DMS)	Longitude (DMS)
1	27° 52' 11.935" N	73° 57' 39.604" E
2	27° 51' 45.406" N	73° 57' 4.007" E
3	27° 51' 17.018" N	73° 57' 7.790" E
4	27° 51' 3.055" N	73° 57' 7.627" E
5	27° 50' 59.092" N	73° 56' 54.979" E
6	27° 50' 50.691" N	73° 56' 28.169" E
7	27° 50' 37.386" N	73° 55' 45.724" E
8	27° 50' 35.253" N	73° 55' 24.059" E
9	27° 50' 33.611" N	73° 55' 7.379" E
10	27° 50' 44.156" N	73° 54' 56.034" E
11	27° 50' 56.867" N	73° 54' 42.358" E
12	27° 51' 6.407" N	73° 54' 32.091" E
13	27° 51' 13.181" N	73° 54' 43.305" E
14	27° 51' 45.371" N	73° 55' 9.624" E
15	27° 52' 8.455" N	73° 55' 40.243" E
16	27° 52' 34.897" N	73° 56' 11.768" E
17	27° 52' 34.972" N	73° 56' 11.858" E
18	27° 53' 3.716" N	73° 56' 36.262" E
19	27° 53' 25.520" N	73° 57' 3.165" E
20	27° 53' 55.023" N	73° 57' 4.751" E
21	27° 54' 20.355" N	73° 57' 4.039" E
22	27° 54' 33.926" N	73° 57' 3.082" E
23	27° 54' 32.080" N	73° 57' 17.201" E
24	27° 54' 30.920" N	73° 57' 26.072" E
25	27° 54' 29.583" N	73° 57' 36.294" E
26	27° 54' 27.470" N	73° 57' 51.659" E
27	27° 53' 14.346" N	73° 57' 53.027" E
28	27° 53' 4.301" N	73° 57' 53.225" E
29	27° 52' 33.522" N	73° 57' 53.835" E
30	27° 52' 23.236" N	73° 57' 54.039" E