

### Vadaseri Lignite Block Summary

Sr.No.	Features	Details
<b>1</b>	<b>Location</b>	
	Lignite Block	<b>Vadaseri</b>
	Latitude	Latitude (N): 11°32'00"- 11°35'30"
	Longitude	Longitude (E): 79°22'30"-79°27'00"
	Topo Sheet No.	58 N/6
	Lignite Field	Mannargudi Lignite Field
	Villages	Vadaseri, Mahadevapattanam, Ullikottai, Kuppachchikottai, Paravankottai, Kizh kurichchi, Andami, Karuppur, Paravatur, Kodiyalam, Nemeru
	Tehsil/Taluka	Orathanadu
	District	Thanjavur
	State	Tamil Nadu
<b>2</b>	<b>Connectivity with Block</b>	
	Nearest Rail Head	Needamangalam
	Road	The area is well connected by road. The nearest meter gauge railway station Needamangalam is situated 30 kms to the north of the block.
	Airport	Trichy
<b>3</b>	<b>Area</b>	
	Geological Block Area (After re-blocking)	68.30 Sq.km
	Forest Area	No forest as per topo sheet
	Non-Forest Area	68.30 Sq.km
<b>4</b>	<b>Climate and Topography</b>	
	Average Annual Rainfall	1097mm
	Temperature (Min.- Max. in°C)	22 to 36
	Local Surface Drainage Channels	The area is drained by distributaries of Cauvery river.
	Rivers	Pamaniyar river flowing about 2.5 km. away in the NE part of the block. Kannanar river flows in the middle of the block.
<b>5</b>	<b>Exploration</b>	
	Status	Regional drilling carried out on 800m grid spacing.
	Exploration Agency	Mineral Exploration Corporation Ltd., (MECL)
	Explored Area (as per GR)	66.02 sq. km (Appx.) as per GR.
	Total Number of Boreholes with metreage	66 boreholes & 13636 m
	Borehole Density	1.00
	General Dip of Seams	The general dip of the beds is in the south-east.
	General Strike Direction	NE-SW
	Faults	Devoid of Fault

	Depth range of Lignite seam	141.3m – 225.8m		
<b>6</b>	<b>Lignite Reserve:</b> Indicated category			
	Grade-wise	Grade: GCV Range (K.Cal/Kg.)	Gross Reserves (MT)	Reserves %
		C: 1001-2000	3.689	0.49
		B: 2001-3000	640.496	84.81
		A: 3001-4000	111.018	14.70
		<b>Total</b>	<b>755.203</b>	<b>100.00</b>
	Ratio-wise	Lignite to OB+IB Ratio	Gross Reserves (m.t.)	Reserves %
		1 : 5 – 1 : 10	43.403	5.75
		1 : 10 – 1 : 15	145.292	19.24
		1 : 15 – 1 : 20	181.129	23.98
		> 1 : 20	385.379	51.03
	<b>Total</b>	<b>755.203</b>	<b>100.00</b>	
<b>7</b>	<b>Surface Constraints</b>	The area is drained by distributaries of Cauvery river. Four Major villages are falls within the block. A few surface water bodies present in the block		
<b>8</b>	<b>Grade of Lignite</b>	B (Provisional). Based on Grade wise data available in GR.		
<b>9</b>	<b>Decision Support System (DSS) Analysis</b>	The polygon touches major river(s) –Kannanar River.		
<b>10</b>	<b>Eco Sensitive Zone (ESZ)</b>	About 13Km South of Vadavoor Bird Sanctuary and about 16Km North_East of Udayamarthandapuram Bird Sanctuary. About 40 in the north west from Point Calimere(WLS)		
<b>11</b>	<b>Remarks</b>	Regional drilling carried out on 800m grid spacing. Geological Report available.		

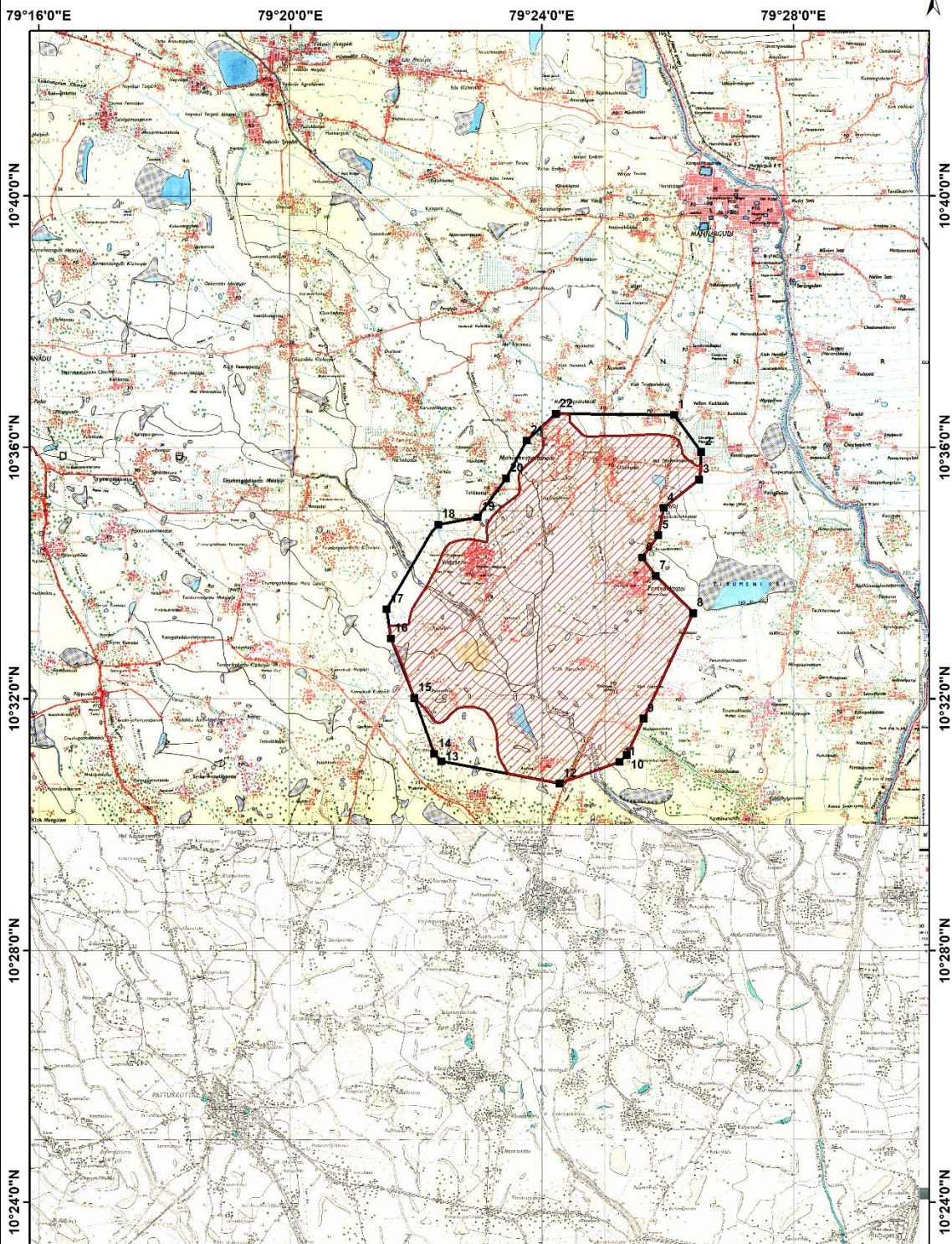
**Note:**

1. The summary has been compiled from “Geological Report on Exploration for Lignite, Vadaseri Block, Thanjavur District, Tamil Nadu-June 2005, prepared by Mineral Exploration Corporation Ltd., Nagpur.
2. The Exploration block area mentioned above is as given in the Geological report, which may vary after DGPS survey.

**Disclaimer:**

1. The analysis is done on Beta-version (Trial Version) of Decision Support System (DSS) of FSI/ MOEF.
2. The Decision Rules for various parameters of this DSS System are controlled by FSI.
3. CMPDI only runs this DSS to obtain the status of any block based on these Decision Rules.
4. The database of the Decision Rules is updated by FSI from time to time.
5. CMPDI does not own any responsibility for variation in the results which are based on the decision Rules of the FSI DSS in case of any updation of the database at FSI end.
6. ESZ analysis and tiger habitat/ corridor given here is based on the information available in public domain. Bidders are encouraged to verify this information and any other information additionally available.

VADASERI LIGNITE BLOCK, MANNARGUDI LIGNITE FIELD, TANJAVUR DISTRICT, TAMILNADU  
Part of SOI Toposheet 58 N/6



**Legend**

Exploration Block Boundary      Lignite Development Boundary

Kilometers

0 1 2 4 6

**Provisional cardinal Points for Vadaseri Lignite Block, Tanjavur District,  
Tamilnadu.**

Boundary Points	Latitude (DMS)	Longitude (DMS)
1	10° 36' 30.844" N	79° 26' 6.054" E
2	10° 35' 55.692" N	79° 26' 31.825" E
3	10° 35' 29.400" N	79° 26' 29.891" E
4	10° 35' 2.314" N	79° 25' 56.131" E
5	10° 34' 36.266" N	79° 25' 51.014" E
6	10° 34' 14.889" N	79° 25' 35.538" E
7	10° 33' 57.510" N	79° 25' 48.377" E
8	10° 33' 21.851" N	79° 26' 24.100" E
9	10° 31' 41.321" N	79° 25' 37.025" E
10	10° 31' 6.527" N	79° 25' 20.734" E
11	10° 31' 0.035" N	79° 25' 14.021" E
12	10° 30' 39.459" N	79° 24' 16.672" E
13	10° 31' 0.607" N	79° 22' 23.933" E
14	10° 31' 7.651" N	79° 22' 17.184" E
15	10° 32' 0.939" N	79° 21' 58.238" E
16	10° 32' 57.766" N	79° 21' 35.635" E
17	10° 33' 25.753" N	79° 21' 31.708" E
18	10° 34' 46.271" N	79° 22' 20.843" E
19	10° 34' 53.465" N	79° 22' 58.457" E
20	10° 35' 30.374" N	79° 23' 25.724" E
21	10° 36' 6.576" N	79° 23' 45.422" E
22	10° 36' 31.884" N	79° 24' 12.975" E