

SURSA COAL BLOCK SUMMARY

PART A

Sr. No	Features	Details
1. Location		
	Coal Block	SURSA
	Latitude	23° 37' 0" N-23° 38' 34" N (Provisional)
	Longitude	83° 16' 18" E-83° 19' 42" E (Provisional)
	Topo Sheet No.	64 M/6
	Coalfield	Tatapani Ramkola
	Villages	Sardapur, Sarsenda
	Tehsil/Taluka	Wadрупnagar
	District	Ambikapur
	State	Chhattisgarh
2. Connectivity with Block		
	Nearest Rail Head	The nearest railhead in Bistrampur on Bilaspur-Anuppur section of South-Eastern Railway and is about 70km away. The other railway station, Renukut on Singrauli-Garwa section of Eastern Railway is 100km away from this area.
	Road	The nearest important locality is Wadрупnagar, to the northeast wherefrom the area can be approached by network of fair weather forest and the other unmetalled roads. The villages within the block are well connected by fair weather unmetalled roads.
	Airport	
3. Area		
	Geological Block Area	11.53 sq.km. (As per shape file, Please refer Note below)
	Forest Area	5 %
	Non-Forest Area	95 %
4. Climate and Topography		
	Average Annual Rainfall	
	Temperature (Min. — Max.)	
	Local Surface Drainage Channels	The area is mainly drained by northeast flowing Sukhnaiya nadi with its numerous unnamed tributaries. Deona nadi forms the eastern boundary of this block and joins with the Sukhanaiya nadi in the northern side of block area. The Sukhanaiya meets the Moran river further north, beyond the block area.

	Rivers	Sukhnaiya, Deona		
5.	Exploration			
	Status	Partly Explored (Drilling for Detailed Exploration Completed)		
	Exploration Agency	MECL		
	Total Number of Boreholes with meterage	92 Boreholes, 64988.25m		
	Borehole Density	Approx. 7.9 Borehole/sq.km.		
	General Dip of Seams	Bedding dip is about 4° to 8 towards WNW, but in westernmost part, beds dipping southeasterly are found at a few places		
	General Strike Direction	The general strike of the beds is NNE-SSW to NE-SW		
6.	Coal Seams & Reserve			
	Coal Seams	Thickness Range (m)	Depth Range (m)	Geological Reserve (MT)
	Seam VI	0.60 - 1.52	72.93-296.15	
	Seam V	0.76 - 2.03	91.28-330.93	
	Seam IV		107.02-336.15	
	Seam IV Top	0.33 - 4.58	107.02-321.58	
	Seam IV Bottom	4.04 - 9.34	114.70-336.15	
	Seam III	4.98 - 8.59	135.67-304.00	
	Seam II	4.22 - 6.34	177.05-355.73	
	Seam II Top		177.05-346.24	
	Seam II Bottom		182.82-355.73	
		Total		72.55
7.	Surface Constraints	NA		
8.	Grade of the block	G7 (Provisional) based on weighted average grade as per data available in regional GR.		
9.	Decision Support System (DSS) Analysis	The polygon touches Wildlife Habitat(s)- Sloth Bear		
10.	Eco Sensitive Zone (ESZ) Analysis	Approx. 1.7 km from the boundary of the tiger corridor connecting Tamorpingla and Semarsot.		

Note:

1. The above data is compiled from Geological Report, Mining Plan and the data furnished by the prior allottee in Annexure-I/II, as available. For clarifications with regard to above data, please refer aforesaid source documents.
2. The boundary of the block has been taken from GR after conversion to WGS84 system by feature matching. The block boundary is provisional and the cardinal points, bounding co-ordinates are approximate.

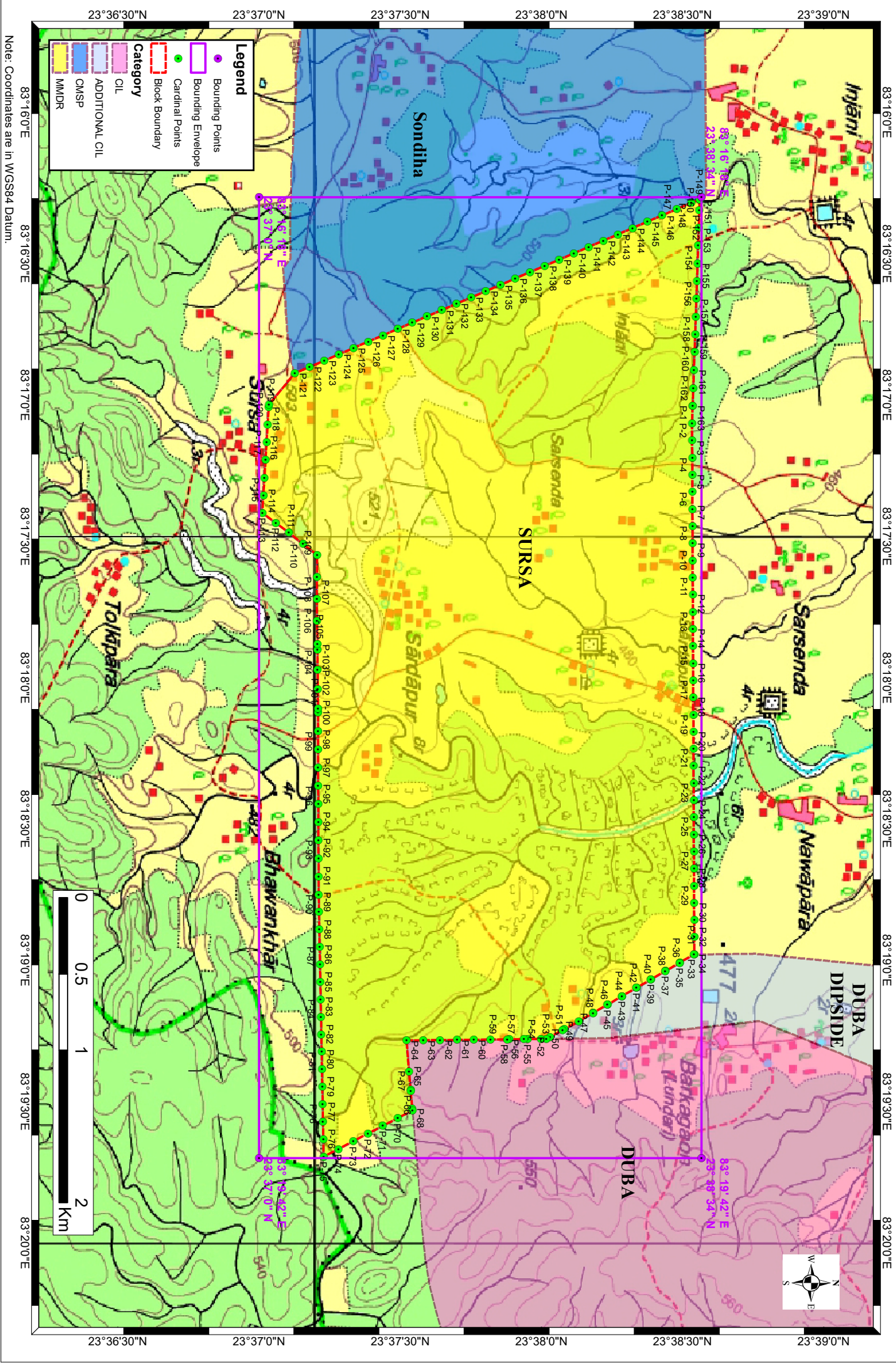
3. There is a difference in area in the shape file and GR. Area in the shape file is based on feature mapped plan of the block as given in the GR. So, the area is tentative and field DGPS survey is required to ascertain the exact area.
4. The resources of the block are given as per GSI RGR. Drilling for detailed exploration is concluded. Resources are likely to increase after preparation of detailed GR.

Disclaimer:

1. The analysis is done on Beta-version (Trial Version) of Decision Support System (DSS) of FSI/ MOEF.
2. The Decision Rules for various parameters of this DSS System are controlled by FSI.
3. CMPDI only runs this DSS to obtain the status of any block based on these Decision Rules.
4. The database of the Decision Rules is updated by FSI from time to time.
5. CMPDI does not own any responsibility for variation in the results which are based on the decision Rules of the FSI DSS in case of any update of the database at FSI end.
6. ESZ analysis and tiger habitat/ corridor given here is based on the information available in public domain. Bidders are encouraged to verify this information and any other information additionally available.

Sursa Block, Tatapani Ramkola Coalfield

FOR INTERNAL/RESTRICTED USE ONLY

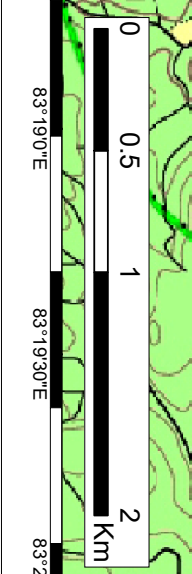


Legend

- Bounding Points
- Bounding Envelope
- Cardinal Points
- Block Boundary

Category

- CIL
- ADDITIONAL CIL
- CMSP
- WMDR



Note: Coordinates are in WGS84 Datum.



Provisional Cardinal Points for SURSA Block

POINT NO	Longitude (WGS84)	Latitude (WGS84)
P-1	83° 17' 2.247" E	23° 38' 32.145" N
P-2	83° 17' 6.023" E	23° 38' 32.017" N
P-3	83° 17' 9.657" E	23° 38' 32.033" N
P-4	83° 17' 13.292" E	23° 38' 32.049" N
P-5	83° 17' 16.926" E	23° 38' 32.065" N
P-6	83° 17' 20.561" E	23° 38' 32.081" N
P-7	83° 17' 24.195" E	23° 38' 32.097" N
P-8	83° 17' 27.830" E	23° 38' 32.113" N
P-9	83° 17' 31.464" E	23° 38' 32.128" N
P-10	83° 17' 35.099" E	23° 38' 32.144" N
P-11	83° 17' 38.733" E	23° 38' 32.160" N
P-12	83° 17' 42.368" E	23° 38' 32.176" N
P-13	83° 17' 46.002" E	23° 38' 32.192" N
P-14	83° 17' 49.636" E	23° 38' 32.207" N
P-15	83° 17' 53.271" E	23° 38' 32.223" N
P-16	83° 17' 56.905" E	23° 38' 32.239" N
P-17	83° 18' 0.540" E	23° 38' 32.254" N
P-18	83° 18' 4.174" E	23° 38' 32.270" N
P-19	83° 18' 7.809" E	23° 38' 32.286" N
P-20	83° 18' 11.443" E	23° 38' 32.301" N
P-21	83° 18' 15.078" E	23° 38' 32.317" N
P-22	83° 18' 18.712" E	23° 38' 32.332" N
P-23	83° 18' 22.347" E	23° 38' 32.348" N
P-24	83° 18' 25.981" E	23° 38' 32.363" N
P-25	83° 18' 29.616" E	23° 38' 32.379" N
P-26	83° 18' 33.250" E	23° 38' 32.394" N
P-27	83° 18' 36.885" E	23° 38' 32.409" N
P-28	83° 18' 40.519" E	23° 38' 32.425" N
P-29	83° 18' 44.153" E	23° 38' 32.440" N
P-30	83° 18' 47.788" E	23° 38' 32.456" N
P-31	83° 18' 51.422" E	23° 38' 32.471" N
P-32	83° 18' 55.057" E	23° 38' 32.486" N
P-33	83° 18' 58.691" E	23° 38' 32.501" N
P-34	83° 18' 58.753" E	23° 38' 32.395" N
P-35	83° 19' 0.476" E	23° 38' 29.427" N
P-36	83° 19' 0.530" E	23° 38' 29.334" N
P-37	83° 19' 2.260" E	23° 38' 26.352" N
P-38	83° 19' 2.307" E	23° 38' 26.272" N
P-39	83° 19' 4.045" E	23° 38' 23.277" N
P-40	83° 19' 4.084" E	23° 38' 23.211" N
P-41	83° 19' 5.830" E	23° 38' 20.203" N
P-42	83° 19' 5.860" E	23° 38' 20.149" N
P-43	83° 19' 7.614" E	23° 38' 17.128" N
P-44	83° 19' 7.637" E	23° 38' 17.088" N
P-45	83° 19' 9.398" E	23° 38' 14.053" N
P-46	83° 19' 9.414" E	23° 38' 14.026" N
P-47	83° 19' 11.183" E	23° 38' 10.978" N

Provisional Cardinal Points for SURSA Block

POINT NO	Longitude (WGS84)	Latitude (WGS84)
P-48	83° 19' 11.191" E	23° 38' 10.965" N
P-49	83° 19' 12.967" E	23° 38' 7.904" N
P-50	83° 19' 14.617" E	23° 38' 4.862" N
P-51	83° 19' 14.826" E	23° 38' 4.476" N
P-52	83° 19' 16.266" E	23° 38' 1.821" N
P-53	83° 19' 16.685" E	23° 38' 1.048" N
P-54	83° 19' 16.700" E	23° 37' 59.871" N
P-55	83° 19' 16.736" E	23° 37' 57.091" N
P-56	83° 19' 16.746" E	23° 37' 56.307" N
P-57	83° 19' 16.786" E	23° 37' 53.134" N
P-58	83° 19' 16.791" E	23° 37' 52.742" N
P-59	83° 19' 16.837" E	23° 37' 49.177" N
P-60	83° 19' 16.871" E	23° 37' 45.612" N
P-61	83° 19' 16.906" E	23° 37' 42.047" N
P-62	83° 19' 16.941" E	23° 37' 38.482" N
P-63	83° 19' 16.976" E	23° 37' 34.917" N
P-64	83° 19' 17.010" E	23° 37' 31.352" N
P-65	83° 19' 23.621" E	23° 37' 31.897" N
P-66	83° 19' 27.549" E	23° 37' 32.230" N
P-67	83° 19' 27.752" E	23° 37' 32.247" N
P-68	83° 19' 31.477" E	23° 37' 32.563" N
P-69	83° 19' 31.884" E	23° 37' 32.598" N
P-70	83° 19' 33.520" E	23° 37' 29.454" N
P-71	83° 19' 35.156" E	23° 37' 26.309" N
P-72	83° 19' 36.792" E	23° 37' 23.165" N
P-73	83° 19' 38.428" E	23° 37' 20.021" N
P-74	83° 19' 40.064" E	23° 37' 16.876" N
P-75	83° 19' 41.700" E	23° 37' 13.732" N
P-76	83° 19' 37.987" E	23° 37' 13.662" N
P-77	83° 19' 34.275" E	23° 37' 13.591" N
P-78	83° 19' 30.562" E	23° 37' 13.521" N
P-79	83° 19' 26.849" E	23° 37' 13.450" N
P-80	83° 19' 23.137" E	23° 37' 13.380" N
P-81	83° 19' 19.424" E	23° 37' 13.309" N
P-82	83° 19' 15.712" E	23° 37' 13.239" N
P-83	83° 19' 11.999" E	23° 37' 13.168" N
P-84	83° 19' 8.286" E	23° 37' 13.097" N
P-85	83° 19' 4.574" E	23° 37' 13.027" N
P-86	83° 19' 0.861" E	23° 37' 12.956" N
P-87	83° 18' 57.148" E	23° 37' 12.885" N
P-88	83° 18' 53.436" E	23° 37' 12.815" N
P-89	83° 18' 49.723" E	23° 37' 12.744" N
P-90	83° 18' 46.011" E	23° 37' 12.673" N
P-91	83° 18' 42.167" E	23° 37' 12.656" N
P-92	83° 18' 38.323" E	23° 37' 12.639" N
P-93	83° 18' 34.479" E	23° 37' 12.622" N
P-94	83° 18' 30.635" E	23° 37' 12.605" N

Provisional Cardinal Points for SURSA Block

POINT NO	Longitude (WGS84)	Latitude (WGS84)
P-95	83° 18' 26.792" E	23° 37' 12.587" N
P-96	83° 18' 22.948" E	23° 37' 12.570" N
P-97	83° 18' 19.104" E	23° 37' 12.553" N
P-98	83° 18' 15.260" E	23° 37' 12.536" N
P-99	83° 18' 11.417" E	23° 37' 12.518" N
P-100	83° 18' 7.424" E	23° 37' 12.534" N
P-101	83° 18' 6.575" E	23° 37' 12.525" N
P-102	83° 18' 2.420" E	23° 37' 12.489" N
P-103	83° 17' 58.264" E	23° 37' 12.454" N
P-104	83° 17' 54.108" E	23° 37' 12.418" N
P-105	83° 17' 52.911" E	23° 37' 12.422" N
P-106	83° 17' 47.892" E	23° 37' 12.317" N
P-107	83° 17' 43.260" E	23° 37' 12.326" N
P-108	83° 17' 38.629" E	23° 37' 12.335" N
P-109	83° 17' 33.997" E	23° 37' 12.344" N
P-110	83° 17' 31.608" E	23° 37' 9.351" N
P-111	83° 17' 29.219" E	23° 37' 6.358" N
P-112	83° 17' 27.104" E	23° 37' 3.543" N
P-113	83° 17' 24.990" E	23° 37' 0.728" N
P-114	83° 17' 21.253" E	23° 37' 0.952" N
P-115	83° 17' 17.516" E	23° 37' 1.177" N
P-116	83° 17' 13.780" E	23° 37' 1.401" N
P-117	83° 17' 10.043" E	23° 37' 1.625" N
P-118	83° 17' 6.306" E	23° 37' 1.849" N
P-119	83° 17' 2.569" E	23° 37' 2.073" N
P-120	83° 17' 2.048" E	23° 37' 2.115" N
P-121	83° 16' 55.357" E	23° 37' 7.611" N
P-122	83° 16' 54.018" E	23° 37' 10.732" N
P-123	83° 16' 52.679" E	23° 37' 13.852" N
P-124	83° 16' 51.339" E	23° 37' 16.972" N
P-125	83° 16' 50.000" E	23° 37' 20.092" N
P-126	83° 16' 48.660" E	23° 37' 23.213" N
P-127	83° 16' 47.321" E	23° 37' 26.333" N
P-128	83° 16' 45.981" E	23° 37' 29.453" N
P-129	83° 16' 44.642" E	23° 37' 32.573" N
P-130	83° 16' 43.302" E	23° 37' 35.694" N
P-131	83° 16' 41.963" E	23° 37' 38.814" N
P-132	83° 16' 40.623" E	23° 37' 41.934" N
P-133	83° 16' 39.284" E	23° 37' 45.054" N
P-134	83° 16' 37.944" E	23° 37' 48.175" N
P-135	83° 16' 36.604" E	23° 37' 51.295" N
P-136	83° 16' 35.265" E	23° 37' 54.415" N
P-137	83° 16' 33.925" E	23° 37' 57.535" N
P-138	83° 16' 32.586" E	23° 38' 0.656" N
P-139	83° 16' 31.246" E	23° 38' 3.776" N
P-140	83° 16' 29.906" E	23° 38' 6.896" N
P-141	83° 16' 28.566" E	23° 38' 10.016" N

Provisional Cardinal Points for SURSA Block

POINT NO	Longitude (WGS84)	Latitude (WGS84)
P-142	83° 16' 27.227" E	23° 38' 13.137" N
P-143	83° 16' 25.887" E	23° 38' 16.257" N
P-144	83° 16' 24.547" E	23° 38' 19.377" N
P-145	83° 16' 23.207" E	23° 38' 22.497" N
P-146	83° 16' 21.868" E	23° 38' 25.617" N
P-147	83° 16' 20.528" E	23° 38' 28.737" N
P-148	83° 16' 19.188" E	23° 38' 31.858" N
P-149	83° 16' 18.430" E	23° 38' 33.624" N
P-150	83° 16' 18.526" E	23° 38' 33.622" N
P-151	83° 16' 18.536" E	23° 38' 33.622" N
P-152	83° 16' 20.710" E	23° 38' 33.549" N
P-153	83° 16' 24.486" E	23° 38' 33.421" N
P-154	83° 16' 28.262" E	23° 38' 33.294" N
P-155	83° 16' 32.039" E	23° 38' 33.166" N
P-156	83° 16' 35.815" E	23° 38' 33.038" N
P-157	83° 16' 39.591" E	23° 38' 32.911" N
P-158	83° 16' 43.367" E	23° 38' 32.783" N
P-159	83° 16' 47.143" E	23° 38' 32.656" N
P-160	83° 16' 50.919" E	23° 38' 32.528" N
P-161	83° 16' 54.695" E	23° 38' 32.400" N
P-162	83° 16' 58.471" E	23° 38' 32.273" N