

## Sukli Block Summary

### PART A

Sr. No.	Features	Details
<b>1.</b>	<b>Location</b>	
	Coal Block	<b>Sukli Block</b>
	Latitude	20° 55' 42" N - 21° 00' 16" N (Provisional)
	Longitude	79° 02' 47" E - 79° 05' 07" E (Provisional)
	Topo Sheet No.	55 P/1 & 55 O/4
	Coalfield	Katol Basin Coalfield
	Villages	Sukli, Nawarmari, Mangrul, Tumandi, Tumdi, Wakeswar, Panjri, Khatmari, Khasarmori
	Tehsil/Taluka	Nagpur Rural
	District	Nagpur
	State	Maharashtra
<b>2.</b>	<b>Connectivity with Block</b>	
	Nearest Rail Head	Butibori railway station at about 5 km in the west. Umrer railway siding passing through the southern boundary of the block.
	Road	The block is about 23 km south-east of Nagpur, the district hq and is the second capital city of Maharsashtra. Sukli block is also located at 5 km east of Butibori, an industrial town on NH-7.
	Airport	Nagpur airport at about 23 km in the north.
<b>3.</b>	<b>Area</b>	
	Geological Block Area	27.7 Sq. Km. (Revised area-Please refer Note #5 below)
	Green Cover	Approx. 10% (As per FSI Map)
	Non-Forest Area	Approx. 90%
<b>4.</b>	<b>Climate and Topography</b>	
	Average Annual Rainfall	1168 mm
	Temperature (Min. — Max.)	9°C-48°C
	Local Surface Drainage Channels	The drainage of dendritic pattern draining away in the form of small nalas in several directions from the tributaries of Vena river located 5 km south-west of the block. Two big ponds are main source of water for local people. One pond is located in the western part of the block, west of village Panjari, while another pond is located in the north-eastern part of the block, east of village Khasarmori.
	Rivers	Vena River

<b>5.</b>	<b>Exploration</b>				
	Status	Regionally Explored			
	Exploration Agency	MECL			
	Total Number of Boreholes with meterage	<b>20 boreholes &amp; 8371.1 m</b>			
	Borehole Density	About 0.7 boreholes per sq. km			
	General Dip of Seams	The beds are dipping south-westerly. Amount of dip vary from 5° to 9° due SW.			
	General Strike Direction	The general strike of the beds trends NW-SE as seen in the entire area of seam development except in the eastern part, where it swerves to almost E-W.			
	Faults	The block is dissected by five normal gravity faults of varied magnitudes. The structural setup interpreted in Sukli block is highly tentative & conjectural due to wide data gaps. Throw ranging between 90m to 200m.			
<b>6.</b>	<b>Coal Seams &amp; Resources</b>				
	<b>Coal Seams</b>	<b>Thickness Range (m)</b>	<b>Depth Range (m)</b>	<b>Resources (MT)</b>	<b>Grade</b>
	Seam-X	0.15-1.35	187.88-517.00	12.254	G9-G17
	Seam-IX	0.50-1.23	193.51-521.25	2.959	G7-G10
	Seam-VIII	0.62-1.85	208.00-534.95	22.796	G6-G10
	Seam-VII	0.14-1.14	209.43-561.20	2.996	G6-G14
	Seam-VI	0.14-1.57	216.69-569.60	3.436	G4-G10
	Seam-V	0.27-1.20	262.77-539.49	6.977	G4-G14
	Seam-IV	0.37-1.38	252.46-549.52	5.93	G6-G12
	Seam-III	0.10-1.40	126.38-563.27	2.466	G6-G14
	Seam-II	0.01-0.70	288.30-578.45		G1-G3
	Seam-I	0.05-0.80	298.59-586.50		G9-G10
	<b>Total</b>			<b>59.81</b>	
<b>7.</b>	<b>Surface Constraints</b>	Two large ponds, one in the west and another in the north of the block, outside the revised block boundary.			
<b>8.</b>	<b>Grade of coal</b>	G8 (Provisional) based on weighted average grade of seam-wise grade-wise data given in the regional GR.			
<b>9.</b>	<b>Decision Support System (DSS) Analysis</b>	Hydrology info: The polygon is within 250 meters of a wetland, Tanks, area-45.45 ha. Wildlife info: The polygon touches Wildlife Habitat(s), Great Indian Bustard			
<b>10.</b>	<b>Eco Sensitive Zone (ESZ) Analysis</b>	Eastern boundary of the block is approx. 32 km from the boundary of ESZ of Umrer Karhandla. Southern boundary of the block is approx. 50 km from the boundary of ESZ of Tadoba Andhari. Western boundary of the block is approx. 26 km from the boundary of TR-PA of Bor.			

**Note:**

1. The above data is compiled from Geological Report, Mining Plan and the data furnished by the prior allottee in Annexure-I/II, as available. For clarifications with regard to above data, please refer aforesaid source documents.
2. The boundary of the block has been taken from GR after conversion to WGS84 system by feature matching. The block boundary is provisional and the cardinal points, bounding coordinates are approximate.
3. There is a difference in area in the shape file and GR. Area in the shape file is based on feature mapped plan of the block as given in the GR. So, the area is tentative and field DGPS survey is required to ascertain the exact area.
4. The summary has been compiled from **“Geological Report on Regional Exploration for Coal, Sukli Block, Umred-Katol Sub-Basin, District-Nagpur, Maharashtra, MECL-2010”**.
5. The block boundary is revised to exclude the water body (pond) in the north and western part of the block. In the south, the revised boundary is restricted from the railway line. The resources are not revised as these are inferred resources and likely to be modified after detailed exploration.

**Disclaimer:**

1. The analysis is done on Beta-version (Trial Version) of Decision Support System (DSS) of FSI/MOEF.
2. The Decision Rules for various parameters of this DSS System are controlled by FSI.
3. CMPDI only runs this DSS to obtain the status of any block based on these Decision Rules.
4. The database of the Decision Rules is updated by FSI from time to time.
5. CMPDI does not own any responsibility for variation in the results which are based on the decision Rules of the FSI DSS in case of any updation of the database at FSI end.
6. ESZ analysis and tiger habitat/ corridor given here is based on the information available in public domain. Bidders are encouraged to verify this information and any other information additionally available.

20°56'0"N 20°57'0"N 20°58'0"N 20°59'0"N 21°0'0"N

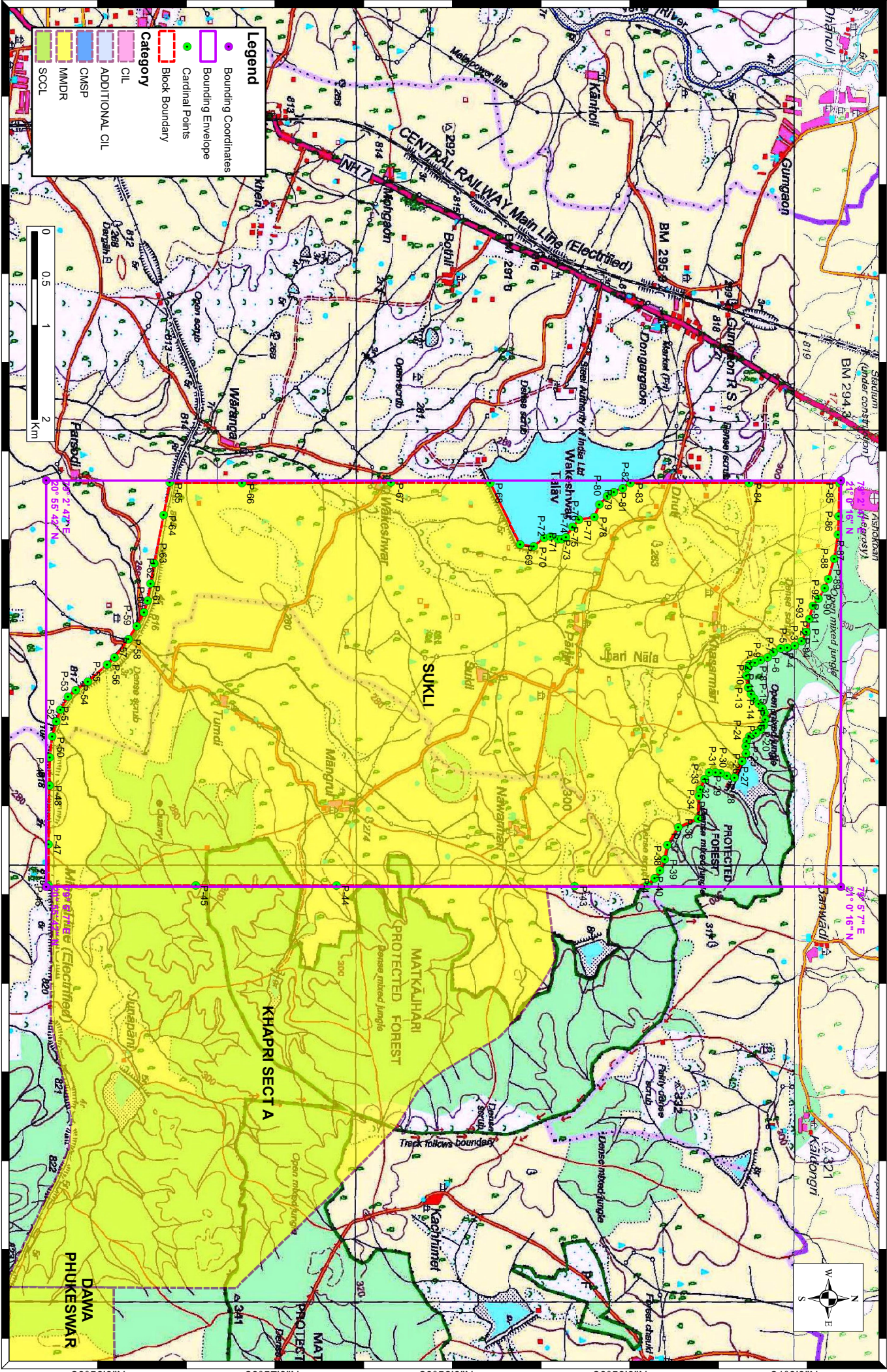
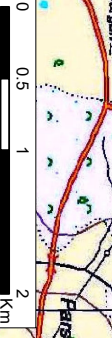
Note: Coordinates are in WGS84 datum.

**Legend**

- Bounding Coordinates
- Bounding Envelope
- Cardinal Points
- Block Boundary

**Category**

- CIL
- ADDITIONAL CIL
- CMSP
- MMDR
- SCCL



Suki Block, Katol Basin Coalfield

FOR INTERNAL/RESTRICTED USE ONLY

20°56'0"N 20°57'0"N 20°58'0"N 20°59'0"N 21°0'0"N

79°10'E 79°20'E 79°30'E 79°40'E 79°50'E 79°60'E 79°70'E

79°30'E 79°40'E 79°50'E 79°60'E 79°70'E

79°50'E 79°60'E 79°70'E

79°70'E



**Provisional Cardinal Points for SUKLI Block**

POINT NO	Longitude (WGS84)	Latitude (WGS84)
P-1	79° 3' 39.226" E	21° 0' 4.141" N
P-2	79° 3' 42.309" E	21° 0' 2.428" N
P-3	79° 3' 44.023" E	21° 0' 0.115" N
P-4	79° 3' 44.451" E	20° 59' 57.460" N
P-5	79° 3' 44.879" E	20° 59' 55.233" N
P-6	79° 3' 46.078" E	20° 59' 52.749" N
P-7	79° 3' 47.877" E	20° 59' 50.693" N
P-8	79° 3' 48.991" E	20° 59' 48.294" N
P-9	79° 3' 49.676" E	20° 59' 46.324" N
P-10	79° 3' 50.276" E	20° 59' 44.611" N
P-11	79° 3' 51.646" E	20° 59' 43.840" N
P-12	79° 3' 54.302" E	20° 59' 43.411" N
P-13	79° 3' 58.354" E	20° 59' 44.054" N
P-14	79° 4' 0.512" E	20° 59' 45.048" N
P-15	79° 4' 2.225" E	20° 59' 46.178" N
P-16	79° 4' 4.007" E	20° 59' 47.686" N
P-17	79° 4' 5.446" E	20° 59' 48.988" N
P-18	79° 4' 7.125" E	20° 59' 49.570" N
P-19	79° 4' 9.215" E	20° 59' 49.879" N
P-20	79° 4' 11.374" E	20° 59' 49.399" N
P-21	79° 4' 12.984" E	20° 59' 48.337" N
P-22	79° 4' 14.047" E	20° 59' 46.658" N
P-23	79° 4' 15.280" E	20° 59' 44.465" N
P-24	79° 4' 16.651" E	20° 59' 43.540" N
P-25	79° 4' 18.501" E	20° 59' 43.163" N
P-26	79° 4' 20.968" E	20° 59' 43.266" N
P-27	79° 4' 23.694" E	20° 59' 42.015" N
P-28	79° 4' 29.476" E	20° 59' 39.274" N
P-29	79° 4' 28.619" E	20° 59' 36.661" N
P-30	79° 4' 27.934" E	20° 59' 34.563" N
P-31	79° 4' 27.463" E	20° 59' 32.807" N
P-32	79° 4' 27.677" E	20° 59' 30.537" N
P-33	79° 4' 29.947" E	20° 59' 29.038" N
P-34	79° 4' 33.385" E	20° 59' 27.537" N
P-35	79° 4' 35.647" E	20° 59' 27.023" N
P-36	79° 4' 43.459" E	20° 59' 26.818" N
P-37	79° 4' 46.543" E	20° 59' 19.931" N
P-38	79° 4' 52.711" E	20° 59' 16.161" N
P-39	79° 4' 57.439" E	20° 59' 15.236" N
P-40	79° 5' 1.448" E	20° 59' 13.592" N
P-41	79° 5' 4.086" E	20° 59' 11.844" N
P-42	79° 5' 6.526" E	20° 59' 9.284" N
P-43	79° 5' 6.730" E	20° 58' 44.221" N
P-44	79° 5' 6.585" E	20° 57' 22.080" N
P-45	79° 5' 6.572" E	20° 56' 33.561" N
P-46	79° 5' 6.643" E	20° 55' 42.803" N
P-47	79° 4' 52.432" E	20° 55' 42.837" N

**Provisional Cardinal Points for SUKLI Block**

POINT NO	Longitude (WGS84)	Latitude (WGS84)
P-48	79° 4' 32.114" E	20° 55' 43.111" N
P-49	79° 4' 22.445" E	20° 55' 43.208" N
P-50	79° 4' 15.284" E	20° 55' 44.030" N
P-51	79° 4' 10.008" E	20° 55' 45.470" N
P-52	79° 4' 5.896" E	20° 55' 46.909" N
P-53	79° 4' 1.544" E	20° 55' 49.547" N
P-54	79° 3' 59.180" E	20° 55' 52.185" N
P-55	79° 3' 56.268" E	20° 55' 56.366" N
P-56	79° 3' 50.376" E	20° 56' 3.050" N
P-57	79° 3' 48.038" E	20° 56' 5.543" N
P-58	79° 3' 41.588" E	20° 56' 10.323" N
P-59	79° 3' 37.013" E	20° 56' 13.252" N
P-60	79° 3' 32.483" E	20° 56' 15.771" N
P-61	79° 3' 28.371" E	20° 56' 16.927" N
P-62	79° 3' 22.563" E	20° 56' 18.032" N
P-63	79° 3' 15.650" E	20° 56' 19.265" N
P-64	79° 2' 58.949" E	20° 56' 22.488" N
P-65	79° 2' 47.755" E	20° 56' 24.578" N
P-66	79° 2' 47.862" E	20° 56' 49.527" N
P-67	79° 2' 47.726" E	20° 57' 40.903" N
P-68	79° 2' 47.835" E	20° 58' 15.136" N
P-69	79° 3' 9.129" E	20° 58' 25.415" N
P-70	79° 3' 9.677" E	20° 58' 30.143" N
P-71	79° 3' 6.662" E	20° 58' 33.707" N
P-72	79° 3' 6.250" E	20° 58' 35.968" N
P-73	79° 3' 7.278" E	20° 58' 38.435" N
P-74	79° 3' 7.210" E	20° 58' 39.669" N
P-75	79° 3' 6.456" E	20° 58' 41.245" N
P-76	79° 3' 2.961" E	20° 58' 43.506" N
P-77	79° 3' 0.563" E	20° 58' 45.699" N
P-78	79° 2' 59.535" E	20° 58' 50.976" N
P-79	79° 2' 55.320" E	20° 58' 52.775" N
P-80	79° 2' 52.322" E	20° 58' 55.345" N
P-81	79° 2' 50.951" E	20° 58' 57.743" N
P-82	79° 2' 49.495" E	20° 59' 0.827" N
P-83	79° 2' 47.777" E	20° 59' 3.422" N
P-84	79° 2' 47.783" E	20° 59' 44.302" N
P-85	79° 2' 47.844" E	21° 0' 15.534" N
P-86	79° 2' 59.308" E	21° 0' 15.192" N
P-87	79° 3' 5.647" E	21° 0' 15.020" N
P-88	79° 3' 13.870" E	21° 0' 13.650" N
P-89	79° 3' 21.066" E	21° 0' 11.594" N
P-90	79° 3' 24.235" E	21° 0' 10.395" N
P-91	79° 3' 27.661" E	21° 0' 8.253" N
P-92	79° 3' 30.146" E	21° 0' 6.369" N
P-93	79° 3' 34.600" E	21° 0' 5.084" N

**Provisional Cardinal Points for SUKLI Block**

POINT NO	Longitude (WGS84)	Latitude (WGS84)
----------	-------------------	------------------

Note: The provisional cardinal points are in WGS84 coordinate system. These points are extracted through ArcGIS software after georeferencing of block boundary and onground DGPS survey is required to ascertain the exact location of the points.