

Shankarpur Bhatgaon II Extn. Coal Block Summary
PART A

Sr. No	Features	Details
1. Location		
	Coal Block	Shankarpur Bhatgaon II Extn.
	Latitude	23° 16' 53" N to 23° 21' 26" N (Provisional)
	Longitude	83° 2' 45" E to 83° 8' 12" E (Provisional)
	Topo Sheet No.	SOI Toposheet no 64 M/13
	Coalfield	Bishrampur Coalfield
	Villages	Songara, Dharampur, Bojha, Mayapur, Jhingador, Mohanpur, Shankarpur, Pandridand,
	Tehsil/Taluka	Surajpur, Pratappur, Bhaiyathan
	District	Surajpur
	State	Chhattisgarh
2. Connectivity with Block		
	Nearest Rail Head	The nearest railway station is at Bishrampur which is the terminal for the Bijuri-Bishrampur line of the South East Central Railway.
	Road	The block can be approached by state highway no 5 which connects Ambikapur and Varanasi. The highway passes through the western part of the block. The interiors of the block are difficult to access during the rainy season.
	Airport	Raipur Airport
3. Area		
	Geological Block Area	33.77 sq. km. (As per shape file. Refer Note No. 3)
	Forest Area	Approx 13% (as per SOI plan)
	Non-Forest Area	Approx. 87% (As per SOI plan)
4. Climate and Topography		
	Average Annual Rainfall	The average rainfall is about 1436mm
	Temperature (Min. — Max.)	2°C - 45°C
	Local Surface Drainage Channels	Mahan river constitutes the northertn boundary of the block. An important seasonal nala, the Gulphuli nala flows northward along the eastern boundary of the block.
	Rivers	Mahan River and Gulphuli Nala

5.	Exploration						
	Status	Explored					
	Exploration Agency	CMPDI					
	Total Number of Boreholes with metres	230 boreholes and 22670.81m					
	Borehole Density	6.84 boreholes per sq km					
	General Dip of Seams	<p>Northern Part: Dip is generally northerly but in the extreme NW part southerly dips are evident. The amount of dip varies from subhorizontal to 5°.</p> <p>Southern Part: Dip varies between <1° to 3°. In the NE part it is 2° – 3° north westerly in the SE part it is 1° – 2° westerly and in the remaining area it varies 1° – 3° northerly.</p>					
	General Strike Direction	Coal seams broadly show NE-SW strike in the western part and NW-SE to NNW-SSE strike in the eastern part of the block.					
6.	Coal Seams & Reserve						
	Coal Seams	Thickness Range (m)	Depth Range (m)	Net Proved Reserves (mt.)	Gross Indicated Reserves (mt.)	Total Reserves (mt.)	Grade
	VIII	0.29 – 3.50	12.28 – 96.90	17.798	0.598	18.396	C - G
	L6	0.06 – 2.20	6.00 – 101.08	6.890	0.200	7.090	A - C
	VI	0.03 -2.00	44.00 – 134.00	10.062	1.135	11.197	A - D
	III Top	0.45 – 2.93	7.60 – 62.12	22.319		22.319	B - F
	II	0.02 – 2.61	15.40 – 94.97	9.930	3.821	13.751	A - E
	L1	0.03 – 1.84	47.00 – 115.74	7.886		7.886	A - E
	TOTAL (Proved + Indicated)			74.885	5.754		
	Grand Total			80.639			
7.	Surface Constraints	Road crossing the block in the western part. Northern boundary marked by river.					
8.	Grade of the block	G6 (Provisional) based on weighted average grade as per grade-wise data available in GR.					
9.	Decision Support System (DSS) Analysis	Wildlife Info: Polygon touches wildlife habitat of Sloth Bear					
10.	Eco Sensitive Zone (ESZ) Analysis	NW boundary is approx. 7 km from the boundary of TR-PA of Tamoringla WLS. Northern boundary is approx. 19 km from the boundary of corridor between ESZ of Tamoringla and Semarsot. Southern boundary is approx. 38 km from the boundary of buffer zone of un-notified Lemru Elephant Reserve.					

PART B

Sr. No.	Features	Details
1.	Previous Allocation	
	Name and Address of Allocatee	Chhattisgarh Mineral Development Corporation Limited
2.	Mine Capacity as per Mining Plan	2.0 MTY
3.	Status of Clearances/Approvals	
	Mining Plan/ Mine Closure Plan	Approved
	Forest Clearance	Pending
	Environmental Clearance	Pending
	Mining Lease	Pending; Previous approval by Gol granted
	Land Acquisition	Not acquired
	No. of PAFs as per Mining Plan/ Mine Closure Plan	NA
4.	Surface Infrastructure already built, if any.	NO

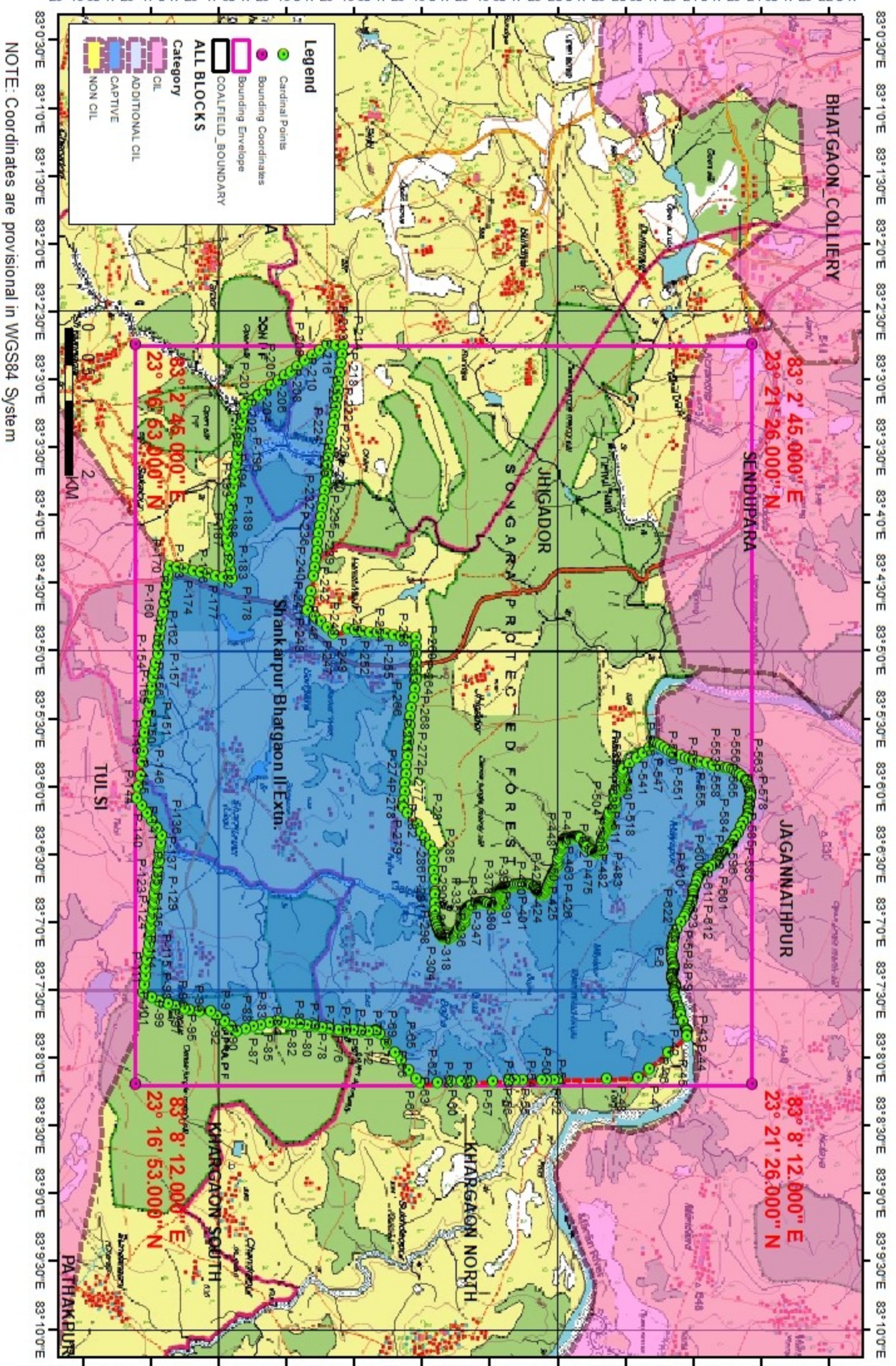
Note:

1. The above data is compiled from Geological Report, Mining Plan and the data furnished by the prior allottee in Annexure-I/II, as available. For clarifications with regard to above data, please refer aforesaid source documents.
2. The boundary of the block has been taken from GR after conversion to WGS84 system by feature matching. The block boundary is provisional and the cardinal points, bounding co-ordinates are approximate.
3. There may be a difference in area in the shape file and GR. Area in the shape file is based on feature mapped plan of the block as given in the GR. So, the area is tentative and field DGPS survey is required to ascertain the exact area.

Disclaimer:

1. The analysis is done on Beta-version (Trial Version) of Decision Support System (DSS) of FSI / MOEF.
2. The Decision Rules for various parameters of this DSS System are controlled by FSI.
3. CMPDI only runs this DSS to obtain the status of any block based on these Decision Rules.
4. The database of the Decision Rules is updated by FSI from time to time.
5. CMPDI does not own any responsibility for variation in the results which are based on the Decision Rules of the FSI DSS in case of any updation of the database at FSI end.
6. ESZ analysis and tiger habitat/ corridor given here is based on the information available in public domain. Bidders are encouraged to verify this information and any other information additionally available.

Shankarpur Bhatgaon II Extn. Block, Bishrampur Coalfield



NOTE: Coordinates are provisional in WGS84 System



Provisional Cardinal Points for Shankarpur Bhatgaon II Extn. Block

POINT NO	Longitude (WGS84)	Latitude (WGS84)
P-1	83° 7' 9.793" E	23° 20' 50.732" N
P-2	83° 7' 10.556" E	23° 20' 50.687" N
P-3	83° 7' 11.568" E	23° 20' 50.690" N
P-4	83° 7' 12.373" E	23° 20' 50.743" N
P-5	83° 7' 14.620" E	23° 20' 50.645" N
P-6	83° 7' 16.260" E	23° 20' 50.606" N
P-7	83° 7' 17.562" E	23° 20' 50.654" N
P-8	83° 7' 18.391" E	23° 20' 50.722" N
P-9	83° 7' 18.928" E	23° 20' 50.852" N
P-10	83° 7' 20.244" E	23° 20' 51.262" N
P-11	83° 7' 20.594" E	23° 20' 51.286" N
P-12	83° 7' 21.150" E	23° 20' 51.269" N
P-13	83° 7' 21.960" E	23° 20' 51.104" N
P-14	83° 7' 23.245" E	23° 20' 50.719" N
P-15	83° 7' 24.079" E	23° 20' 50.501" N
P-16	83° 7' 24.655" E	23° 20' 50.451" N
P-17	83° 7' 24.964" E	23° 20' 50.447" N
P-18	83° 7' 25.434" E	23° 20' 50.487" N
P-19	83° 7' 25.827" E	23° 20' 50.573" N
P-20	83° 7' 26.523" E	23° 20' 50.883" N
P-21	83° 7' 27.095" E	23° 20' 51.232" N
P-22	83° 7' 27.827" E	23° 20' 51.705" N
P-23	83° 7' 28.300" E	23° 20' 51.834" N
P-24	83° 7' 28.905" E	23° 20' 51.894" N
P-25	83° 7' 29.488" E	23° 20' 51.877" N
P-26	83° 7' 29.600" E	23° 20' 51.864" N
P-27	83° 7' 30.366" E	23° 20' 51.638" N
P-28	83° 7' 31.251" E	23° 20' 51.406" N
P-29	83° 7' 31.544" E	23° 20' 51.372" N
P-30	83° 7' 32.347" E	23° 20' 51.401" N
P-31	83° 7' 33.162" E	23° 20' 51.627" N
P-32	83° 7' 34.449" E	23° 20' 52.125" N
P-33	83° 7' 36.055" E	23° 20' 52.789" N
P-34	83° 7' 37.590" E	23° 20' 53.313" N
P-35	83° 7' 39.034" E	23° 20' 53.772" N
P-36	83° 7' 40.759" E	23° 20' 54.225" N
P-37	83° 7' 41.798" E	23° 20' 54.570" N
P-38	83° 7' 44.275" E	23° 20' 55.391" N
P-39	83° 7' 47.559" E	23° 20' 56.734" N
P-40	83° 7' 48.455" E	23° 20' 57.018" N
P-41	83° 7' 48.649" E	23° 20' 57.059" N
P-42	83° 7' 49.133" E	23° 20' 57.094" N
P-43	83° 7' 50.710" E	23° 20' 57.259" N
P-44	83° 7' 51.102" E	23° 20' 56.808" N
P-45	83° 7' 58.129" E	23° 20' 48.747" N
P-46	83° 8' 5.525" E	23° 20' 40.204" N
P-47	83° 8' 9.451" E	23° 20' 35.702" N

Provisional Cardinal Points for Shankarpur Bhatgaon II Extn. Block

POINT NO	Longitude (WGS84)	Latitude (WGS84)
P-48	83° 8' 9.753" E	23° 20' 21.504" N
P-49	83° 8' 10.258" E	23° 19' 59.793" N
P-50	83° 8' 10.279" E	23° 19' 58.590" N
P-51	83° 8' 10.369" E	23° 19' 54.948" N
P-52	83° 8' 10.374" E	23° 19' 52.702" N
P-53	83° 8' 10.576" E	23° 19' 44.422" N
P-54	83° 8' 10.659" E	23° 19' 41.257" N
P-55	83° 8' 10.690" E	23° 19' 38.657" N
P-56	83° 8' 10.880" E	23° 19' 31.060" N
P-57	83° 8' 11.053" E	23° 19' 21.926" N
P-58	83° 8' 11.205" E	23° 19' 17.550" N
P-59	83° 8' 11.307" E	23° 19' 13.142" N
P-60	83° 8' 11.427" E	23° 19' 6.736" N
P-61	83° 8' 11.650" E	23° 18' 58.840" N
P-62	83° 8' 9.921" E	23° 18' 57.407" N
P-63	83° 8' 5.820" E	23° 18' 54.058" N
P-64	83° 8' 1.670" E	23° 18' 50.644" N
P-65	83° 7' 58.573" E	23° 18' 48.115" N
P-66	83° 7' 53.984" E	23° 18' 44.321" N
P-67	83° 7' 50.230" E	23° 18' 41.232" N
P-68	83° 7' 48.540" E	23° 18' 39.850" N
P-69	83° 7' 48.715" E	23° 18' 39.829" N
P-70	83° 7' 48.666" E	23° 18' 36.419" N
P-71	83° 7' 48.617" E	23° 18' 33.009" N
P-72	83° 7' 48.568" E	23° 18' 29.599" N
P-73	83° 7' 48.518" E	23° 18' 26.189" N
P-74	83° 7' 48.469" E	23° 18' 22.779" N
P-75	83° 7' 47.910" E	23° 18' 19.322" N
P-76	83° 7' 47.351" E	23° 18' 15.866" N
P-77	83° 7' 46.792" E	23° 18' 12.409" N
P-78	83° 7' 46.298" E	23° 18' 9.085" N
P-79	83° 7' 45.805" E	23° 18' 5.761" N
P-80	83° 7' 45.312" E	23° 18' 2.436" N
P-81	83° 7' 44.819" E	23° 17' 59.112" N
P-82	83° 7' 44.326" E	23° 17' 55.788" N
P-83	83° 7' 45.193" E	23° 17' 52.301" N
P-84	83° 7' 46.061" E	23° 17' 48.815" N
P-85	83° 7' 46.929" E	23° 17' 45.328" N
P-86	83° 7' 47.797" E	23° 17' 41.841" N
P-87	83° 7' 48.665" E	23° 17' 38.355" N
P-88	83° 7' 46.514" E	23° 17' 35.381" N
P-89	83° 7' 44.363" E	23° 17' 32.407" N
P-90	83° 7' 42.212" E	23° 17' 29.433" N
P-91	83° 7' 40.061" E	23° 17' 26.460" N
P-92	83° 7' 39.807" E	23° 17' 21.740" N
P-93	83° 7' 39.553" E	23° 17' 17.021" N
P-94	83° 7' 38.778" E	23° 17' 14.608" N

Provisional Cardinal Points for Shankarpur Bhatgaon II Extn. Block

POINT NO	Longitude (WGS84)	Latitude (WGS84)
P-95	83° 7' 37.662" E	23° 17' 11.062" N
P-96	83° 7' 36.545" E	23° 17' 7.517" N
P-97	83° 7' 35.429" E	23° 17' 3.971" N
P-98	83° 7' 33.662" E	23° 17' 0.303" N
P-99	83° 7' 31.896" E	23° 16' 56.636" N
P-100	83° 7' 28.308" E	23° 16' 57.057" N
P-101	83° 7' 28.232" E	23° 16' 57.066" N
P-102	83° 7' 24.720" E	23° 16' 57.479" N
P-103	83° 7' 24.568" E	23° 16' 57.497" N
P-104	83° 7' 21.132" E	23° 16' 57.900" N
P-105	83° 7' 20.904" E	23° 16' 57.927" N
P-106	83° 7' 17.544" E	23° 16' 58.322" N
P-107	83° 7' 17.240" E	23° 16' 58.358" N
P-108	83° 7' 13.956" E	23° 16' 58.743" N
P-109	83° 7' 13.576" E	23° 16' 58.788" N
P-110	83° 7' 10.368" E	23° 16' 59.165" N
P-111	83° 7' 9.912" E	23° 16' 59.218" N
P-112	83° 7' 6.780" E	23° 16' 59.586" N
P-113	83° 7' 6.249" E	23° 16' 59.649" N
P-114	83° 7' 3.192" E	23° 17' 0.008" N
P-115	83° 7' 2.585" E	23° 17' 0.079" N
P-116	83° 6' 59.604" E	23° 17' 0.429" N
P-117	83° 6' 58.921" E	23° 17' 0.509" N
P-118	83° 6' 56.016" E	23° 17' 0.851" N
P-119	83° 6' 55.257" E	23° 17' 0.940" N
P-120	83° 6' 52.428" E	23° 17' 1.272" N
P-121	83° 6' 51.593" E	23° 17' 1.370" N
P-122	83° 6' 48.840" E	23° 17' 1.693" N
P-123	83° 6' 47.929" E	23° 17' 1.800" N
P-124	83° 6' 45.252" E	23° 17' 2.115" N
P-125	83° 6' 44.265" E	23° 17' 2.231" N
P-126	83° 6' 41.664" E	23° 17' 2.536" N
P-127	83° 6' 40.601" E	23° 17' 2.661" N
P-128	83° 6' 38.076" E	23° 17' 2.957" N
P-129	83° 6' 36.937" E	23° 17' 3.091" N
P-130	83° 6' 34.488" E	23° 17' 3.379" N
P-131	83° 6' 33.273" E	23° 17' 3.521" N
P-132	83° 6' 30.900" E	23° 17' 3.800" N
P-133	83° 6' 29.609" E	23° 17' 3.951" N
P-134	83° 6' 26.591" E	23° 17' 4.306" N
P-135	83° 6' 25.945" E	23° 17' 4.382" N
P-136	83° 6' 22.281" E	23° 17' 4.812" N
P-137	83° 6' 19.032" E	23° 17' 2.635" N
P-138	83° 6' 15.782" E	23° 17' 0.459" N
P-139	83° 6' 12.533" E	23° 16' 58.282" N
P-140	83° 6' 9.284" E	23° 16' 56.106" N
P-141	83° 6' 6.035" E	23° 16' 53.929" N

Provisional Cardinal Points for Shankarpur Bhatgaon II Extn. Block

POINT NO	Longitude (WGS84)	Latitude (WGS84)
P-142	83° 6' 0.901" E	23° 16' 54.576" N
P-143	83° 5' 55.766" E	23° 16' 55.222" N
P-144	83° 5' 49.621" E	23° 16' 55.990" N
P-145	83° 5' 45.362" E	23° 16' 56.336" N
P-146	83° 5' 41.102" E	23° 16' 56.682" N
P-147	83° 5' 36.843" E	23° 16' 57.028" N
P-148	83° 5' 32.411" E	23° 16' 57.790" N
P-149	83° 5' 27.979" E	23° 16' 58.552" N
P-150	83° 5' 23.547" E	23° 16' 59.314" N
P-151	83° 5' 19.993" E	23° 16' 59.925" N
P-152	83° 5' 16.440" E	23° 17' 0.537" N
P-153	83° 5' 12.887" E	23° 17' 1.148" N
P-154	83° 5' 9.333" E	23° 17' 1.759" N
P-155	83° 5' 5.780" E	23° 17' 2.370" N
P-156	83° 5' 2.227" E	23° 17' 2.982" N
P-157	83° 4' 58.493" E	23° 17' 3.486" N
P-158	83° 4' 54.759" E	23° 17' 3.991" N
P-159	83° 4' 51.026" E	23° 17' 4.496" N
P-160	83° 4' 47.292" E	23° 17' 5.000" N
P-161	83° 4' 43.559" E	23° 17' 5.505" N
P-162	83° 4' 39.724" E	23° 17' 6.024" N
P-163	83° 4' 39.492" E	23° 17' 6.055" N
P-164	83° 4' 35.890" E	23° 17' 6.542" N
P-165	83° 4' 35.425" E	23° 17' 6.605" N
P-166	83° 4' 32.056" E	23° 17' 7.061" N
P-167	83° 4' 31.358" E	23° 17' 7.155" N
P-168	83° 4' 28.221" E	23° 17' 7.579" N
P-169	83° 4' 27.291" E	23° 17' 7.705" N
P-170	83° 4' 23.224" E	23° 17' 8.255" N
P-171	83° 4' 23.947" E	23° 17' 11.690" N
P-172	83° 4' 24.671" E	23° 17' 15.124" N
P-173	83° 4' 25.394" E	23° 17' 18.559" N
P-174	83° 4' 26.117" E	23° 17' 21.993" N
P-175	83° 4' 26.840" E	23° 17' 25.428" N
P-176	83° 4' 27.563" E	23° 17' 28.862" N
P-177	83° 4' 28.286" E	23° 17' 32.297" N
P-178	83° 4' 29.009" E	23° 17' 35.731" N
P-179	83° 4' 25.398" E	23° 17' 35.370" N
P-180	83° 4' 21.786" E	23° 17' 35.009" N
P-181	83° 4' 18.174" E	23° 17' 34.648" N
P-182	83° 4' 14.563" E	23° 17' 34.286" N
P-183	83° 4' 10.951" E	23° 17' 33.925" N
P-184	83° 4' 7.340" E	23° 17' 33.564" N
P-185	83° 4' 3.652" E	23° 17' 34.103" N
P-186	83° 3' 59.965" E	23° 17' 34.641" N
P-187	83° 3' 56.277" E	23° 17' 35.180" N
P-188	83° 3' 52.590" E	23° 17' 35.719" N

Provisional Cardinal Points for Shankarpur Bhatgaon II Extn. Block

POINT NO	Longitude (WGS84)	Latitude (WGS84)
P-189	83° 3' 48.902" E	23° 17' 36.258" N
P-190	83° 3' 45.215" E	23° 17' 36.797" N
P-191	83° 3' 41.527" E	23° 17' 37.335" N
P-192	83° 3' 37.840" E	23° 17' 37.874" N
P-193	83° 3' 34.152" E	23° 17' 38.413" N
P-194	83° 3' 30.464" E	23° 17' 38.951" N
P-195	83° 3' 26.777" E	23° 17' 39.490" N
P-196	83° 3' 23.089" E	23° 17' 40.028" N
P-197	83° 3' 19.402" E	23° 17' 40.567" N
P-198	83° 3' 15.714" E	23° 17' 41.106" N
P-199	83° 3' 12.026" E	23° 17' 41.644" N
P-200	83° 3' 9.901" E	23° 17' 44.554" N
P-201	83° 3' 7.776" E	23° 17' 47.464" N
P-202	83° 3' 5.651" E	23° 17' 50.373" N
P-203	83° 3' 3.526" E	23° 17' 53.283" N
P-204	83° 3' 1.401" E	23° 17' 56.193" N
P-205	83° 2' 59.275" E	23° 17' 59.102" N
P-206	83° 2' 57.150" E	23° 18' 2.012" N
P-207	83° 2' 55.025" E	23° 18' 4.922" N
P-208	83° 2' 52.605" E	23° 18' 8.195" N
P-209	83° 2' 50.186" E	23° 18' 11.468" N
P-210	83° 2' 47.766" E	23° 18' 14.742" N
P-211	83° 2' 45.346" E	23° 18' 18.015" N
P-212	83° 2' 45.546" E	23° 18' 21.704" N
P-213	83° 2' 45.746" E	23° 18' 25.393" N
P-214	83° 2' 49.772" E	23° 18' 24.862" N
P-215	83° 2' 53.797" E	23° 18' 24.331" N
P-216	83° 2' 57.822" E	23° 18' 23.801" N
P-217	83° 3' 1.848" E	23° 18' 23.270" N
P-218	83° 3' 5.517" E	23° 18' 22.767" N
P-219	83° 3' 9.185" E	23° 18' 22.263" N
P-220	83° 3' 12.854" E	23° 18' 21.759" N
P-221	83° 3' 16.523" E	23° 18' 21.256" N
P-222	83° 3' 20.192" E	23° 18' 20.752" N
P-223	83° 3' 23.860" E	23° 18' 20.248" N
P-224	83° 3' 27.821" E	23° 18' 19.751" N
P-225	83° 3' 31.782" E	23° 18' 19.254" N
P-226	83° 3' 35.401" E	23° 18' 18.781" N
P-227	83° 3' 39.019" E	23° 18' 18.309" N
P-228	83° 3' 42.637" E	23° 18' 17.836" N
P-229	83° 3' 46.255" E	23° 18' 17.363" N
P-230	83° 3' 50.136" E	23° 18' 16.839" N
P-231	83° 3' 54.016" E	23° 18' 16.315" N
P-232	83° 3' 57.896" E	23° 18' 15.791" N
P-233	83° 4' 1.776" E	23° 18' 15.268" N
P-234	83° 4' 5.432" E	23° 18' 14.802" N
P-235	83° 4' 9.088" E	23° 18' 14.336" N

Provisional Cardinal Points for Shankarpur Bhatgaon II Extn. Block

POINT NO	Longitude (WGS84)	Latitude (WGS84)
P-236	83° 4' 12.744" E	23° 18' 13.870" N
P-237	83° 4' 16.400" E	23° 18' 13.405" N
P-238	83° 4' 20.142" E	23° 18' 12.904" N
P-239	83° 4' 23.884" E	23° 18' 12.403" N
P-240	83° 4' 27.626" E	23° 18' 11.903" N
P-241	83° 4' 34.457" E	23° 18' 10.957" N
P-242	83° 4' 38.623" E	23° 18' 10.187" N
P-243	83° 4' 42.789" E	23° 18' 9.417" N
P-244	83° 4' 45.342" E	23° 18' 12.261" N
P-245	83° 4' 47.895" E	23° 18' 15.105" N
P-246	83° 4' 50.449" E	23° 18' 17.949" N
P-247	83° 4' 53.002" E	23° 18' 20.793" N
P-248	83° 4' 51.067" E	23° 18' 26.914" N
P-249	83° 4' 51.519" E	23° 18' 30.303" N
P-250	83° 4' 51.971" E	23° 18' 33.692" N
P-251	83° 4' 52.423" E	23° 18' 37.081" N
P-252	83° 4' 52.874" E	23° 18' 40.470" N
P-253	83° 4' 53.326" E	23° 18' 43.859" N
P-254	83° 4' 53.778" E	23° 18' 47.247" N
P-255	83° 4' 54.230" E	23° 18' 50.636" N
P-256	83° 4' 54.682" E	23° 18' 54.025" N
P-257	83° 4' 55.133" E	23° 18' 57.414" N
P-258	83° 4' 58.734" E	23° 18' 57.456" N
P-259	83° 5' 2.335" E	23° 18' 57.497" N
P-260	83° 5' 5.936" E	23° 18' 57.539" N
P-261	83° 5' 9.536" E	23° 18' 57.580" N
P-262	83° 5' 13.137" E	23° 18' 57.622" N
P-263	83° 5' 17.360" E	23° 18' 56.871" N
P-264	83° 5' 21.583" E	23° 18' 56.121" N
P-265	83° 5' 25.807" E	23° 18' 55.370" N
P-266	83° 5' 30.030" E	23° 18' 54.619" N
P-267	83° 5' 33.564" E	23° 18' 54.359" N
P-268	83° 5' 37.097" E	23° 18' 54.098" N
P-269	83° 5' 40.631" E	23° 18' 53.838" N
P-270	83° 5' 44.165" E	23° 18' 53.577" N
P-271	83° 5' 47.699" E	23° 18' 53.317" N
P-272	83° 5' 51.517" E	23° 18' 53.018" N
P-273	83° 5' 55.336" E	23° 18' 52.719" N
P-274	83° 5' 59.154" E	23° 18' 52.420" N
P-275	83° 6' 2.972" E	23° 18' 52.121" N
P-276	83° 6' 6.763" E	23° 18' 51.722" N
P-277	83° 6' 9.564" E	23° 18' 51.427" N
P-278	83° 6' 10.345" E	23° 18' 52.058" N
P-279	83° 6' 12.304" E	23° 18' 53.641" N
P-280	83° 6' 17.367" E	23° 18' 57.712" N
P-281	83° 6' 20.582" E	23° 18' 59.639" N
P-282	83° 6' 23.641" E	23° 19' 1.516" N

Provisional Cardinal Points for Shankarpur Bhatgaon II Extn. Block

POINT NO	Longitude (WGS84)	Latitude (WGS84)
P-283	83° 6' 26.701" E	23° 19' 3.392" N
P-284	83° 6' 29.761" E	23° 19' 5.269" N
P-285	83° 6' 33.743" E	23° 19' 5.325" N
P-286	83° 6' 37.725" E	23° 19' 5.382" N
P-287	83° 6' 41.707" E	23° 19' 5.439" N
P-288	83° 6' 47.241" E	23° 19' 5.522" N
P-289	83° 6' 48.506" E	23° 19' 5.547" N
P-290	83° 6' 52.532" E	23° 19' 5.644" N
P-291	83° 6' 55.526" E	23° 19' 5.640" N
P-292	83° 6' 58.294" E	23° 19' 5.682" N
P-293	83° 6' 59.760" E	23° 19' 5.796" N
P-294	83° 7' 0.763" E	23° 19' 5.998" N
P-295	83° 7' 2.051" E	23° 19' 6.300" N
P-296	83° 7' 2.927" E	23° 19' 6.558" N
P-297	83° 7' 3.531" E	23° 19' 6.860" N
P-298	83° 7' 4.660" E	23° 19' 7.284" N
P-299	83° 7' 5.845" E	23° 19' 7.813" N
P-300	83° 7' 6.459" E	23° 19' 8.144" N
P-301	83° 7' 6.764" E	23° 19' 8.377" N
P-302	83° 7' 7.229" E	23° 19' 8.822" N
P-303	83° 7' 7.589" E	23° 19' 9.291" N
P-304	83° 7' 7.875" E	23° 19' 9.796" N
P-305	83° 7' 7.994" E	23° 19' 10.130" N
P-306	83° 7' 8.086" E	23° 19' 10.481" N
P-307	83° 7' 8.136" E	23° 19' 10.852" N
P-308	83° 7' 8.111" E	23° 19' 11.476" N
P-309	83° 7' 8.028" E	23° 19' 11.970" N
P-310	83° 7' 7.812" E	23° 19' 12.504" N
P-311	83° 7' 7.545" E	23° 19' 12.863" N
P-312	83° 7' 6.783" E	23° 19' 13.906" N
P-313	83° 7' 6.393" E	23° 19' 14.383" N
P-314	83° 7' 6.094" E	23° 19' 14.685" N
P-315	83° 7' 5.510" E	23° 19' 15.202" N
P-316	83° 7' 4.977" E	23° 19' 15.574" N
P-317	83° 7' 4.091" E	23° 19' 16.123" N
P-318	83° 7' 3.600" E	23° 19' 16.481" N
P-319	83° 7' 2.817" E	23° 19' 17.438" N
P-320	83° 7' 2.584" E	23° 19' 17.699" N
P-321	83° 7' 2.241" E	23° 19' 18.010" N
P-322	83° 7' 1.847" E	23° 19' 18.340" N
P-323	83° 7' 1.431" E	23° 19' 18.631" N
P-324	83° 7' 0.990" E	23° 19' 18.841" N
P-325	83° 7' 0.462" E	23° 19' 19.000" N
P-326	83° 6' 59.719" E	23° 19' 19.130" N
P-327	83° 6' 59.036" E	23° 19' 19.180" N
P-328	83° 6' 57.533" E	23° 19' 19.214" N
P-329	83° 6' 56.773" E	23° 19' 19.284" N

Provisional Cardinal Points for Shankarpur Bhatgaon II Extn. Block

POINT NO	Longitude (WGS84)	Latitude (WGS84)
P-330	83° 6' 56.253" E	23° 19' 19.391" N
P-331	83° 6' 55.568" E	23° 19' 19.697" N
P-332	83° 6' 54.810" E	23° 19' 20.095" N
P-333	83° 6' 54.186" E	23° 19' 20.403" N
P-334	83° 6' 53.985" E	23° 19' 20.570" N
P-335	83° 6' 53.527" E	23° 19' 21.152" N
P-336	83° 6' 53.320" E	23° 19' 21.609" N
P-337	83° 6' 52.547" E	23° 19' 23.946" N
P-338	83° 6' 52.160" E	23° 19' 24.850" N
P-339	83° 6' 52.013" E	23° 19' 25.365" N
P-340	83° 6' 51.923" E	23° 19' 26.132" N
P-341	83° 6' 51.884" E	23° 19' 26.318" N
P-342	83° 6' 51.848" E	23° 19' 26.758" N
P-343	83° 6' 51.891" E	23° 19' 27.278" N
P-344	83° 6' 51.937" E	23° 19' 27.488" N
P-345	83° 6' 52.047" E	23° 19' 27.867" N
P-346	83° 6' 52.169" E	23° 19' 28.176" N
P-347	83° 6' 52.488" E	23° 19' 29.024" N
P-348	83° 6' 52.867" E	23° 19' 29.977" N
P-349	83° 6' 53.202" E	23° 19' 30.986" N
P-350	83° 6' 53.393" E	23° 19' 31.681" N
P-351	83° 6' 53.398" E	23° 19' 32.029" N
P-352	83° 6' 53.390" E	23° 19' 32.501" N
P-353	83° 6' 53.350" E	23° 19' 32.977" N
P-354	83° 6' 53.228" E	23° 19' 33.729" N
P-355	83° 6' 53.122" E	23° 19' 34.128" N
P-356	83° 6' 52.969" E	23° 19' 34.578" N
P-357	83° 6' 52.850" E	23° 19' 34.851" N
P-358	83° 6' 52.682" E	23° 19' 35.114" N
P-359	83° 6' 52.484" E	23° 19' 35.326" N
P-360	83° 6' 52.272" E	23° 19' 35.496" N
P-361	83° 6' 51.984" E	23° 19' 35.640" N
P-362	83° 6' 51.756" E	23° 19' 35.702" N
P-363	83° 6' 51.620" E	23° 19' 35.725" N
P-364	83° 6' 51.354" E	23° 19' 35.724" N
P-365	83° 6' 51.061" E	23° 19' 35.672" N
P-366	83° 6' 50.485" E	23° 19' 35.480" N
P-367	83° 6' 49.678" E	23° 19' 35.159" N
P-368	83° 6' 48.802" E	23° 19' 34.783" N
P-369	83° 6' 48.449" E	23° 19' 34.608" N
P-370	83° 6' 48.230" E	23° 19' 34.562" N
P-371	83° 6' 47.948" E	23° 19' 34.580" N
P-372	83° 6' 47.764" E	23° 19' 34.649" N
P-373	83° 6' 47.490" E	23° 19' 34.712" N
P-374	83° 6' 47.090" E	23° 19' 34.764" N
P-375	83° 6' 46.732" E	23° 19' 34.848" N
P-376	83° 6' 46.389" E	23° 19' 35.004" N

Provisional Cardinal Points for Shankarpur Bhatgaon II Extn. Block

POINT NO	Longitude (WGS84)	Latitude (WGS84)
P-377	83° 6' 46.088" E	23° 19' 35.269" N
P-378	83° 6' 45.964" E	23° 19' 35.483" N
P-379	83° 6' 45.862" E	23° 19' 35.763" N
P-380	83° 6' 45.814" E	23° 19' 36.085" N
P-381	83° 6' 45.751" E	23° 19' 36.617" N
P-382	83° 6' 45.629" E	23° 19' 37.288" N
P-383	83° 6' 45.465" E	23° 19' 37.940" N
P-384	83° 6' 45.321" E	23° 19' 38.374" N
P-385	83° 6' 45.135" E	23° 19' 38.868" N
P-386	83° 6' 44.973" E	23° 19' 39.259" N
P-387	83° 6' 44.459" E	23° 19' 40.348" N
P-388	83° 6' 44.184" E	23° 19' 40.986" N
P-389	83° 6' 44.076" E	23° 19' 41.364" N
P-390	83° 6' 43.920" E	23° 19' 42.174" N
P-391	83° 6' 43.858" E	23° 19' 42.540" N
P-392	83° 6' 43.818" E	23° 19' 43.125" N
P-393	83° 6' 43.909" E	23° 19' 44.658" N
P-394	83° 6' 43.962" E	23° 19' 46.265" N
P-395	83° 6' 44.034" E	23° 19' 47.148" N
P-396	83° 6' 44.058" E	23° 19' 47.442" N
P-397	83° 6' 44.191" E	23° 19' 47.840" N
P-398	83° 6' 44.500" E	23° 19' 48.507" N
P-399	83° 6' 45.025" E	23° 19' 49.192" N
P-400	83° 6' 45.399" E	23° 19' 49.651" N
P-401	83° 6' 45.851" E	23° 19' 49.992" N
P-402	83° 6' 46.394" E	23° 19' 50.406" N
P-403	83° 6' 46.676" E	23° 19' 50.619" N
P-404	83° 6' 47.190" E	23° 19' 50.989" N
P-405	83° 6' 47.692" E	23° 19' 51.422" N
P-406	83° 6' 47.871" E	23° 19' 51.637" N
P-407	83° 6' 48.043" E	23° 19' 51.908" N
P-408	83° 6' 48.183" E	23° 19' 52.207" N
P-409	83° 6' 48.331" E	23° 19' 52.838" N
P-410	83° 6' 48.360" E	23° 19' 53.124" N
P-411	83° 6' 48.327" E	23° 19' 53.393" N
P-412	83° 6' 48.190" E	23° 19' 53.713" N
P-413	83° 6' 47.996" E	23° 19' 54.006" N
P-414	83° 6' 47.778" E	23° 19' 54.233" N
P-415	83° 6' 47.320" E	23° 19' 54.553" N
P-416	83° 6' 46.646" E	23° 19' 54.914" N
P-417	83° 6' 46.053" E	23° 19' 55.179" N
P-418	83° 6' 45.173" E	23° 19' 55.523" N
P-419	83° 6' 44.501" E	23° 19' 55.777" N
P-420	83° 6' 43.771" E	23° 19' 56.035" N
P-421	83° 6' 43.460" E	23° 19' 56.161" N
P-422	83° 6' 43.065" E	23° 19' 56.395" N
P-423	83° 6' 42.694" E	23° 19' 56.585" N

Provisional Cardinal Points for Shankarpur Bhatgaon II Extn. Block

POINT NO	Longitude (WGS84)	Latitude (WGS84)
P-424	83° 6' 42.385" E	23° 19' 56.707" N
P-425	83° 6' 41.683" E	23° 19' 56.936" N
P-426	83° 6' 40.468" E	23° 19' 57.327" N
P-427	83° 6' 39.576" E	23° 19' 57.690" N
P-428	83° 6' 39.129" E	23° 19' 57.920" N
P-429	83° 6' 38.363" E	23° 19' 58.347" N
P-430	83° 6' 37.322" E	23° 19' 58.922" N
P-431	83° 6' 36.634" E	23° 19' 59.326" N
P-432	83° 6' 36.035" E	23° 19' 59.575" N
P-433	83° 6' 35.473" E	23° 19' 59.771" N
P-434	83° 6' 34.680" E	23° 19' 59.975" N
P-435	83° 6' 33.976" E	23° 20' 0.077" N
P-436	83° 6' 32.164" E	23° 20' 0.269" N
P-437	83° 6' 30.844" E	23° 20' 0.684" N
P-438	83° 6' 29.705" E	23° 20' 0.911" N
P-439	83° 6' 27.799" E	23° 20' 1.596" N
P-440	83° 6' 27.159" E	23° 20' 1.783" N
P-441	83° 6' 27.118" E	23° 20' 1.798" N
P-442	83° 6' 26.182" E	23° 20' 2.089" N
P-443	83° 6' 24.851" E	23° 20' 2.494" N
P-444	83° 6' 24.594" E	23° 20' 2.517" N
P-445	83° 6' 24.524" E	23° 20' 2.557" N
P-446	83° 6' 24.430" E	23° 20' 2.644" N
P-447	83° 6' 24.350" E	23° 20' 2.746" N
P-448	83° 6' 24.307" E	23° 20' 2.861" N
P-449	83° 6' 24.244" E	23° 20' 3.080" N
P-450	83° 6' 24.224" E	23° 20' 4.082" N
P-451	83° 6' 24.177" E	23° 20' 4.411" N
P-452	83° 6' 24.026" E	23° 20' 4.959" N
P-453	83° 6' 23.602" E	23° 20' 6.166" N
P-454	83° 6' 23.229" E	23° 20' 6.870" N
P-455	83° 6' 23.039" E	23° 20' 7.355" N
P-456	83° 6' 22.919" E	23° 20' 7.995" N
P-457	83° 6' 22.913" E	23° 20' 8.276" N
P-458	83° 6' 22.942" E	23° 20' 8.502" N
P-459	83° 6' 22.970" E	23° 20' 8.710" N
P-460	83° 6' 23.033" E	23° 20' 8.895" N
P-461	83° 6' 23.185" E	23° 20' 9.190" N
P-462	83° 6' 23.364" E	23° 20' 9.527" N
P-463	83° 6' 23.798" E	23° 20' 9.967" N
P-464	83° 6' 25.543" E	23° 20' 11.368" N
P-465	83° 6' 26.683" E	23° 20' 12.398" N
P-466	83° 6' 27.202" E	23° 20' 12.921" N
P-467	83° 6' 28.515" E	23° 20' 14.539" N
P-468	83° 6' 29.216" E	23° 20' 15.360" N
P-469	83° 6' 29.480" E	23° 20' 15.770" N
P-470	83° 6' 30.010" E	23° 20' 16.750" N

Provisional Cardinal Points for Shankarpur Bhatgaon II Extn. Block

POINT NO	Longitude (WGS84)	Latitude (WGS84)
P-471	83° 6' 30.118" E	23° 20' 16.980" N
P-472	83° 6' 30.143" E	23° 20' 17.404" N
P-473	83° 6' 30.098" E	23° 20' 17.985" N
P-474	83° 6' 29.907" E	23° 20' 18.541" N
P-475	83° 6' 29.619" E	23° 20' 19.033" N
P-476	83° 6' 29.230" E	23° 20' 19.511" N
P-477	83° 6' 28.954" E	23° 20' 19.650" N
P-478	83° 6' 28.472" E	23° 20' 19.831" N
P-479	83° 6' 28.319" E	23° 20' 19.871" N
P-480	83° 6' 28.073" E	23° 20' 19.885" N
P-481	83° 6' 27.710" E	23° 20' 19.773" N
P-482	83° 6' 26.759" E	23° 20' 19.608" N
P-483	83° 6' 26.214" E	23° 20' 19.642" N
P-484	83° 6' 23.776" E	23° 20' 20.060" N
P-485	83° 6' 22.576" E	23° 20' 20.415" N
P-486	83° 6' 21.589" E	23° 20' 20.867" N
P-487	83° 6' 20.871" E	23° 20' 21.303" N
P-488	83° 6' 19.692" E	23° 20' 22.259" N
P-489	83° 6' 19.006" E	23° 20' 22.951" N
P-490	83° 6' 18.619" E	23° 20' 23.117" N
P-491	83° 6' 18.439" E	23° 20' 23.145" N
P-492	83° 6' 18.069" E	23° 20' 23.121" N
P-493	83° 6' 17.739" E	23° 20' 23.073" N
P-494	83° 6' 17.535" E	23° 20' 23.027" N
P-495	83° 6' 17.077" E	23° 20' 22.763" N
P-496	83° 6' 16.597" E	23° 20' 22.346" N
P-497	83° 6' 16.144" E	23° 20' 21.963" N
P-498	83° 6' 15.947" E	23° 20' 21.887" N
P-499	83° 6' 15.743" E	23° 20' 21.841" N
P-500	83° 6' 15.585" E	23° 20' 21.821" N
P-501	83° 6' 15.373" E	23° 20' 21.824" N
P-502	83° 6' 14.941" E	23° 20' 21.916" N
P-503	83° 6' 13.584" E	23° 20' 22.546" N
P-504	83° 6' 12.653" E	23° 20' 22.954" N
P-505	83° 6' 11.252" E	23° 20' 24.116" N
P-506	83° 6' 10.784" E	23° 20' 24.324" N
P-507	83° 6' 10.139" E	23° 20' 24.723" N
P-508	83° 6' 9.487" E	23° 20' 25.197" N
P-509	83° 6' 9.232" E	23° 20' 25.359" N
P-510	83° 6' 8.926" E	23° 20' 25.441" N
P-511	83° 6' 8.587" E	23° 20' 25.522" N
P-512	83° 6' 8.315" E	23° 20' 25.568" N
P-513	83° 6' 8.116" E	23° 20' 25.578" N
P-514	83° 6' 7.825" E	23° 20' 25.580" N
P-515	83° 6' 6.779" E	23° 20' 25.464" N
P-516	83° 6' 5.469" E	23° 20' 25.185" N
P-517	83° 6' 4.698" E	23° 20' 25.071" N

Provisional Cardinal Points for Shankarpur Bhatgaon II Extn. Block

POINT NO	Longitude (WGS84)	Latitude (WGS84)
P-518	83° 6' 4.145" E	23° 20' 25.046" N
P-519	83° 6' 3.979" E	23° 20' 25.068" N
P-520	83° 6' 3.778" E	23° 20' 25.176" N
P-521	83° 6' 3.601" E	23° 20' 25.431" N
P-522	83° 6' 2.715" E	23° 20' 26.943" N
P-523	83° 6' 2.115" E	23° 20' 28.066" N
P-524	83° 6' 1.482" E	23° 20' 29.208" N
P-525	83° 6' 1.219" E	23° 20' 29.456" N
P-526	83° 6' 0.748" E	23° 20' 29.730" N
P-527	83° 6' 0.163" E	23° 20' 29.869" N
P-528	83° 5' 59.516" E	23° 20' 29.855" N
P-529	83° 5' 59.073" E	23° 20' 29.820" N
P-530	83° 5' 58.896" E	23° 20' 29.775" N
P-531	83° 5' 58.369" E	23° 20' 29.671" N
P-532	83° 5' 57.996" E	23° 20' 29.525" N
P-533	83° 5' 57.092" E	23° 20' 29.123" N
P-534	83° 5' 55.345" E	23° 20' 28.318" N
P-535	83° 5' 55.009" E	23° 20' 28.253" N
P-536	83° 5' 54.652" E	23° 20' 28.261" N
P-537	83° 5' 53.948" E	23° 20' 28.375" N
P-538	83° 5' 52.816" E	23° 20' 28.841" N
P-539	83° 5' 50.574" E	23° 20' 31.771" N
P-540	83° 5' 48.332" E	23° 20' 34.702" N
P-541	83° 5' 46.090" E	23° 20' 37.632" N
P-542	83° 5' 43.847" E	23° 20' 40.562" N
P-543	83° 5' 41.605" E	23° 20' 43.492" N
P-544	83° 5' 42.001" E	23° 20' 44.070" N
P-545	83° 5' 42.694" E	23° 20' 45.167" N
P-546	83° 5' 43.748" E	23° 20' 46.825" N
P-547	83° 5' 44.658" E	23° 20' 48.670" N
P-548	83° 5' 45.597" E	23° 20' 50.571" N
P-549	83° 5' 46.972" E	23° 20' 54.054" N
P-550	83° 5' 47.935" E	23° 20' 56.495" N
P-551	83° 5' 48.529" E	23° 20' 57.979" N
P-552	83° 5' 49.197" E	23° 21' 0.093" N
P-553	83° 5' 50.013" E	23° 21' 2.861" N
P-554	83° 5' 50.533" E	23° 21' 5.749" N
P-555	83° 5' 51.157" E	23° 21' 8.720" N
P-556	83° 5' 51.818" E	23° 21' 11.996" N
P-557	83° 5' 52.364" E	23° 21' 14.257" N
P-558	83° 5' 52.604" E	23° 21' 15.344" N
P-559	83° 5' 53.182" E	23° 21' 17.077" N
P-560	83° 5' 53.765" E	23° 21' 18.181" N
P-561	83° 5' 54.485" E	23° 21' 19.390" N
P-562	83° 5' 55.263" E	23° 21' 20.468" N
P-563	83° 5' 56.511" E	23° 21' 21.716" N
P-564	83° 5' 57.793" E	23° 21' 22.875" N

Provisional Cardinal Points for Shankarpur Bhatgaon II Extn. Block

POINT NO	Longitude (WGS84)	Latitude (WGS84)
P-565	83° 5' 58.601" E	23° 21' 23.472" N
P-566	83° 6' 0.067" E	23° 21' 24.232" N
P-567	83° 6' 1.608" E	23° 21' 24.770" N
P-568	83° 6' 2.659" E	23° 21' 25.021" N
P-569	83° 6' 3.145" E	23° 21' 25.100" N
P-570	83° 6' 3.984" E	23° 21' 25.164" N
P-571	83° 6' 5.291" E	23° 21' 25.156" N
P-572	83° 6' 7.303" E	23° 21' 25.017" N
P-573	83° 6' 8.686" E	23° 21' 24.910" N
P-574	83° 6' 9.090" E	23° 21' 24.797" N
P-575	83° 6' 10.133" E	23° 21' 24.481" N
P-576	83° 6' 10.927" E	23° 21' 24.284" N
P-577	83° 6' 12.422" E	23° 21' 24.132" N
P-578	83° 6' 13.242" E	23° 21' 23.976" N
P-579	83° 6' 13.975" E	23° 21' 23.819" N
P-580	83° 6' 14.420" E	23° 21' 23.517" N
P-581	83° 6' 16.223" E	23° 21' 22.092" N
P-582	83° 6' 16.438" E	23° 21' 21.937" N
P-583	83° 6' 18.436" E	23° 21' 20.936" N
P-584	83° 6' 21.141" E	23° 21' 19.524" N
P-585	83° 6' 22.632" E	23° 21' 18.705" N
P-586	83° 6' 24.470" E	23° 21' 17.783" N
P-587	83° 6' 26.275" E	23° 21' 16.527" N
P-588	83° 6' 26.956" E	23° 21' 15.984" N
P-589	83° 6' 27.884" E	23° 21' 15.161" N
P-590	83° 6' 28.422" E	23° 21' 14.583" N
P-591	83° 6' 29.989" E	23° 21' 12.945" N
P-592	83° 6' 30.428" E	23° 21' 12.523" N
P-593	83° 6' 30.921" E	23° 21' 12.132" N
P-594	83° 6' 31.811" E	23° 21' 11.657" N
P-595	83° 6' 32.481" E	23° 21' 11.028" N
P-596	83° 6' 32.638" E	23° 21' 10.893" N
P-597	83° 6' 33.592" E	23° 21' 10.360" N
P-598	83° 6' 34.408" E	23° 21' 9.809" N
P-599	83° 6' 35.124" E	23° 21' 9.099" N
P-600	83° 6' 35.708" E	23° 21' 8.216" N
P-601	83° 6' 36.924" E	23° 21' 6.391" N
P-602	83° 6' 38.322" E	23° 21' 4.290" N
P-603	83° 6' 39.422" E	23° 21' 2.923" N
P-604	83° 6' 40.146" E	23° 21' 2.368" N
P-605	83° 6' 40.388" E	23° 21' 2.202" N
P-606	83° 6' 41.284" E	23° 21' 1.861" N
P-607	83° 6' 42.488" E	23° 21' 1.482" N
P-608	83° 6' 44.366" E	23° 21' 0.816" N
P-609	83° 6' 46.300" E	23° 21' 0.211" N
P-610	83° 6' 46.979" E	23° 21' 0.060" N
P-611	83° 6' 48.623" E	23° 20' 59.778" N

Provisional Cardinal Points for Shankarpur Bhatgaon II Extn. Block

POINT NO	Longitude (WGS84)	Latitude (WGS84)
P-612	83° 6' 49.751" E	23° 20' 59.635" N
P-613	83° 6' 51.371" E	23° 20' 59.312" N
P-614	83° 6' 51.800" E	23° 20' 59.148" N
P-615	83° 6' 53.497" E	23° 20' 58.257" N
P-616	83° 6' 53.981" E	23° 20' 58.025" N
P-617	83° 6' 55.046" E	23° 20' 57.669" N
P-618	83° 6' 55.260" E	23° 20' 57.589" N
P-619	83° 6' 56.117" E	23° 20' 57.062" N
P-620	83° 6' 57.246" E	23° 20' 56.570" N
P-621	83° 6' 58.445" E	23° 20' 55.832" N
P-622	83° 7' 0.928" E	23° 20' 54.509" N
P-623	83° 7' 3.760" E	23° 20' 52.906" N
P-624	83° 7' 5.955" E	23° 20' 51.792" N
P-625	83° 7' 7.103" E	23° 20' 51.338" N
P-626	83° 7' 7.907" E	23° 20' 51.107" N
P-627	83° 7' 8.715" E	23° 20' 50.903" N