

Riri Lignite Block Summary

Sr.No.	Features	Details
1	Location	
	Lignite Block	Riri
	Latitude	Latitude (N):27° 52' 20" - 27° 56' 42"
	Longitude	Longitude (E):73° 59' 06" -74° 04' 30"
	Topo Sheet No.	45 I/1 and 45 E/13
	Lignite Field	Bikaner Lignite Field
	Villages	Kalyansar Naya is located North west of the block. Jakhasar Naya is located about 1.5 km south east of the block
	Tehsil/Taluka	Sri-Dungargarh
	District	Bikaner
	State	Rajasthan
2	Connectivity with Block	
	Nearest Rail Head	Sri-Dungargarh
	Road	The block is approachable by Bikaner – Sri Dungargarh National Highway No.11 and by Bikaner – Sri Dungargarh rail line of Western Railway.
	Airport	Bikaner
3	Area	
	Geological Block Area	33.2 Sq.km
	Forest Area	No forest as per topo sheet
	Non-Forest Area	33.2 Sq.km
4	Climate and Topography	
	Average Annual Rainfall	279.8 mm.
	Temperature (Min.- Max. in°C)	4 to 49.40
	Local Surface Drainage Channels	The area is devoid of any drainage network. However, the local nalas fed by rain water die out at very short distances due to sandy nature of the surface.
	Rivers	Nil
5	Exploration	
	Status	Detailed Exploration completed. (200x200m grid)
	Exploration Agency	Mineral Exploration Corporation Ltd., (MECL)
	Explored Area (as per GR)	40 Sq. km (Appx.) as per GR.
	Total Number of Boreholes with metreage	237 boreholes & 36625.00 m
	Borehole Density	5.925
	General Dip of Seams	The general dip of the beds are in the south-east & it vary within wide limit from 2° to 7°.
	General Strike Direction	NE-SW with local undulations and warping
	Faults	Devoid of Fault

	Depth range of Lignite seam	92.60m to 168.00m			
6	Lignite Reserve: Measured category				
	Grade-wise	Grade: GCV Range (K.Cal/Kg.)	Area (Sq km)	Gross Reserves (MT)	Reserves %
		C: 1001-2000	8.267	91.678	50.25
		B: 2001-3000	7.208	90.588	49.66
		A: 3001-4000	0.027	0.165	0.09
		Total	15.502	182.431	100.00
	Ratio-wise	Lignite to OB+IB Ratio	Area (Sq km)	Gross Reserves (m.t.)	Reserves %
		Upto 1:5	0.989	33.974	18.62
		1 : 5 – 1 : 10	4.200	78.910	43.25
		1 : 10 – 1 : 15	2.523	30.772	16.87
		> 1 : 15	7.790	38.775	21.26
		Total	15.502	182.431	100.00
7	Surface Constraints	Kalyansar Naya village is falling within the block			
8	Grade of Lignite	B (Provisional). Based on Grade wise data available in GR.			
9	Decision Support System (DSS) Analysis	-			
10	Eco Sensitive Zone (ESZ)	Talchhapar WLS is at about 36Km in the South-East direction from the block.			
11	Remarks	Detailed exploration completed.			

PART B

Sr. No.	Features	Details
1	Tentative Peak rated Capacity	4.0Mty

Note:

1. The summary has been compiled from "Geological Report on Exploration for Lignite, Riri (Contractual) Block, Bikaner District, Rajasthan-October 2008, prepared by Mineral Exploration Corporation Ltd., Nagpur.
2. The Exploration block area mentioned above is as given in the Geological report, which may vary after DGPS survey.

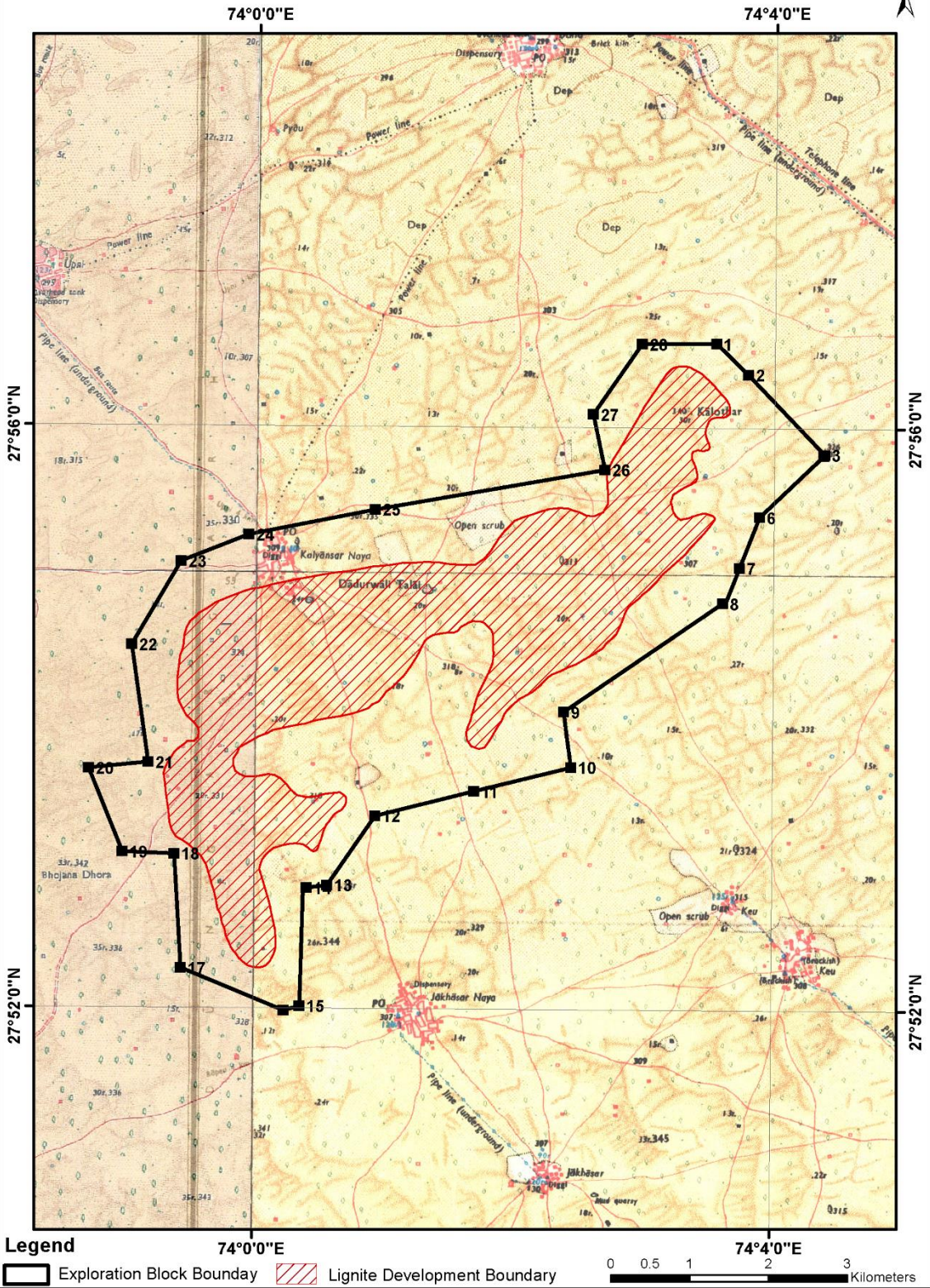
Disclaimer:

1. The analysis is done on Beta-version (Trial Version) of Decision Support System (DSS) of FSI/ MOEF.
2. The Decision Rules for various parameters of this DSS System are controlled by FSI.
3. CMPDI only runs this DSS to obtain the status of any block based on these Decision Rules.
4. The database of the Decision Rules is updated by FSI from time to time.
5. CMPDI does not own any responsibility for variation in the results which are based on the decision Rules of the FSI DSS in case of any updation of the database at FSI end.

6. ESZ analysis and tiger habitat/ corridor given here is based on the information available in public domain. Bidders are encouraged to verify this information and any other information additionally available.

RIRI LIGNITE BLOCK, BIKANER LIGNITE FIELD, BIKANER DISTRICT, RAJASTHAN

Part of SOI Toposheet 45 I/1 and 45 E/13



Provisional cardinal Points for Riri Lignite Block, Bikaner District, Rajasthan.

Boundary Point	Latitude (DMS)	Longitude (DMS)
1	27° 56' 34.850" N	74° 3' 32.823" E
2	27° 56' 22.188" N	74° 3' 47.810" E
3	27° 55' 49.315" N	74° 4' 23.409" E
4	27° 55' 49.309" N	74° 4' 23.417" E
5	27° 55' 48.999" N	74° 4' 23.061" E
6	27° 55' 23.524" N	74° 3' 53.307" E
7	27° 55' 2.501" N	74° 3' 44.145" E
8	27° 54' 47.933" N	74° 3' 36.624" E
9	27° 54' 2.825" N	74° 2' 23.050" E
10	27° 53' 40.011" N	74° 2' 26.643" E
11	27° 53' 29.871" N	74° 1' 41.622" E
12	27° 53' 19.579" N	74° 0' 55.946" E
13	27° 52' 50.842" N	74° 0' 33.807" E
14	27° 52' 49.671" N	74° 0' 24.247" E
15	27° 52' 1.069" N	74° 0' 21.400" E
16	27° 51' 59.136" N	74° 0' 14.016" E
17	27° 52' 16.401" N	73° 59' 26.234" E
18	27° 53' 3.387" N	73° 59' 22.814" E
19	27° 53' 4.080" N	73° 58' 58.681" E
20	27° 53' 38.451" N	73° 58' 42.764" E
21	27° 53' 41.051" N	73° 59' 10.362" E
22	27° 54' 29.549" N	73° 59' 2.344" E
23	27° 55' 3.942" N	73° 59' 25.001" E
24	27° 55' 15.097" N	73° 59' 56.284" E
25	27° 55' 25.662" N	74° 0' 54.885" E
26	27° 55' 42.715" N	74° 2' 41.346" E
27	27° 56' 5.568" N	74° 2' 35.964" E
28	27° 56' 34.667" N	74° 2' 58.367" E