

RAMPIA & DIPSIDE OF RAMPIA COAL BLOCK SUMMARY

PART A

| Sr. No. | Features | Details |
|-----------|---------------------------------|--|
| 1. | Location | |
| | Coal Block | Rampia & Dipside of Rampia |
| | Latitude | 22° 02' 35" N - 22° 05' 44" N (Provisional) |
| | Longitude | 83° 38' 23" E - 83° 40' 44" E (Provisional) |
| | Topo Sheet No. | 64N/12SE-1and 64N/12SW-3 |
| | Coalfield | Ib Valley |
| | Villages | Rajapara, Ratanpur, Balbaspur, Chhatabar |
| | Tehsil/Taluka | Hemgir |
| | District | Sundergarh |
| | State | Odisha |
| 2. | Connectivity with Blockk | |
| | Nearest Rail Head | Hemgir is the nearest railway station located on the Mumbai-Howrah main line and is approximately 35 km away from the block. |
| | Road | The block is well connected by road. The Sundergarh (Odisha) – Raigarh (Chhatisgarh) all weathered road passes through south of the block. The Sundergarh and Raigarh townships are located at a distance of around 50 km and 40 km respectively from the block (Plate I). The block is also connected by black top road with two important towns of Odisha namely Rourkela and Jharsuguda at about 150 and 80 km respectively away from the block. In addition, there are existence of 3 to 4 no. of kutchra and pucca roads passing through the block, connecting various villages like Chhatabar, Ratanpur, Pudajharia, Balbaspu, Chhoipatra etc. |
| | Airport | - |
| 3. | Area | |
| | Geological Block Area | 12.7 sq.km. (As per shape file; Refer Note No. 3) |
| | Green Cover | Approx. 40 % (As per FSI plan) |
| | Area excluding green cover | Approx. 60 % (As per FSI plan) |
| 4. | Climate and Topography | |
| | Average Annual Rainfall | 1500 mm |
| | Temperature (Min. — Max.) | 9°C to 47°C |
| | Local Surface Drainage Channels | Budajhodia Nala/Chaturdhara Nala with downstream towards east flowing from WNW to ESE direction within the block. The general slope is towards south. Budajhodia Nala ultimately joins to main Basundhara River in east, Basundhara River connects the drainage system of the whole Gopalpur track and ultimately joins with the IB River in between Jharsuguda and Brajagnagar in the eastern part of the coalfield. Other small jhors criss-cross within the block. Also small ponds and dugwells are available within the block which are utilized for irrigation and drinking purposes. |

| | | | | | |
|------------|--|---|-----------------|-------------------------|---------|
| | Rivers | - | | | |
| 5. | Exploration | | | | |
| | Status | Explored | | | |
| | Exploration Agency | CMPDI | | | |
| | Total Number of Boreholes with meterage | 70 Boreholes; 21552.45 m | | | |
| | Borehole Density | Approx. 5.5 Boreholes/sq.km. | | | |
| | General Dip of Seams | The beds dip southerly 3° to 6° | | | |
| | General Strike Direction | The general strike of the beds is WNW – ESE with minor swings. | | | |
| | Faults | 10 Faults. Throw ranging between 0-50m | | | |
| 6. | Coal Seams & Reserve (Proved: 706.127 MT, Indicated: 415.751 MT, Inferred: 55.891 MT, Unclassified: 1.640 MT) | | | | |
| | Coal Seams | Thickness Range (m) | Depth Range (m) | Geological Reserve (MT) | Grade |
| | Lajkura IV | 3-12 | 14.76-208 | 68.997 | G11-G14 |
| | Lajkura III | 1.16-6.43 | 10.34-238 | 26.551 | G11-G14 |
| | Lajkura II+I | 32.32-36.42 | 9.39-186.1 | 49.557 | G11-G13 |
| | Lajkura II | 15.48-29.35 | 23.6-246 | 153.885 | G10-G14 |
| | Lajkura IIT | 3.1-18.47 | 14.62-256.26 | 11.663 | G10-G12 |
| | Lajkura IIB | 2.89-16.11 | 35.56-267.85 | 11.367 | G11-G14 |
| | Lajkura I | 5.29-17.93 | 39.46-279.55 | 110.935 | G12-G15 |
| | Lajkura IT | 2-9.2 | 141.17-234.39 | 5.716 | G13-G17 |
| | Lajkura IB | 4-7.71 | 150.56-241.18 | 4.752 | G11-G13 |
| | RAMPUR V+IV | 4.4-20.51 | 193.06-328 | 22.138 | G10-G14 |
| | Rampur V | 0.7-10.32 | 36.86-371.3 | 64.907 | G9-G15 |
| | Rampur IV | 1.5-16.1 | 28.86-375.88 | 72.286 | G10-G15 |
| | Rampur IVT | 1.04-11.35 | 80.97-341.22 | 15.728 | G10-G16 |
| | Rampur IVB | 1.11-5.02 | 98.31-345.7 | 19.547 | G12-G14 |
| | Rampur III | 2.1-12.89 | 230-406.65 | 16.576 | G10-G14 |
| | Rampur IIIT | 0.4-8.42 | 52.27-401 | 50.257 | G11-G14 |
| | Rampur IIIB | 1.14-8.86 | 56.48-404.5 | 61.356 | G9-G13 |
| | Rampur II+I | 3.6-20.45 | 61.62-442 | 274.095 | G7-G12 |
| | Rampur II | 4.6-5.61 | 334.55-453.7 | | G8-G9 |
| | Rampur I | 3.82-5.44 | 342.36-460.8 | | G5-G9 |
| | Ib | 2.73-20.73 | 177.81-433 | 100.774 | G3-G8 |
| | Ib Top | 1.04-14.82 | 287-483 | 21.434 | G3-G13 |
| | Ib Bot | 0.9-14.89 | 290-489.1 | 16.89 | G3-G14 |
| | | Total | | 1179.411 | |
| 7. | Surface Constraints | Raigarh-Sundargarh road crosses through Dipside of Rampia coal block. | | | |
| 8. | Grade of the block | G12 (Provisional) based on weighted average grade as per data available in GR. | | | |
| 9. | Decision Support System (DSS) Analysis | The polygon touches Wildlife Habitat(s)- Sloth Bear | | | |
| 10. | Eco Sensitive Zone (ESZ) Analysis | The ESZ boundary of Sambalpur Elephant Region located approx. 40 kms away from S-E boundary of the block and ESZ boundary of DEBIGARH is located approx. 36km away from Southern boundary of the block. | | | |
| 11. | CBA Land Acquisition Status | Land notified under CBA by MCL in central part of the block. | | | |

PART B

| Sr. No. | Features | Details |
|-----------|---|---|
| 1. | Previous Allocation | |
| | Name and Address of Allocatee | Sterlite Energy Ltd., (IPP), GMR Energy Ltd. (IPP), Arcelor Mittal India Ltd. (CPP), Lanco Group Ltd. (IPP), Navbharat Power Pvt. Ltd.(IPP), Reliance Energy Ltd. (IPP) |
| 2. | Target Capacity as per Mining Plan | Mining Plan not available |
| | Assessed tentative PRC | 15 Mty |
| 3. | Status of Clearances/Approvals | |
| | Mining Plan/ Mine Closure Plan | NA |
| | Forest Clearance | NA |
| | Environmental Clearance | NA |
| | Mining Lease | NA |
| | Land Acquisition | NA |
| | No. of PAPs as per Mining Plan | NA |
| 4. | Surface Infrastructure already built, if any. | NA |

Note:

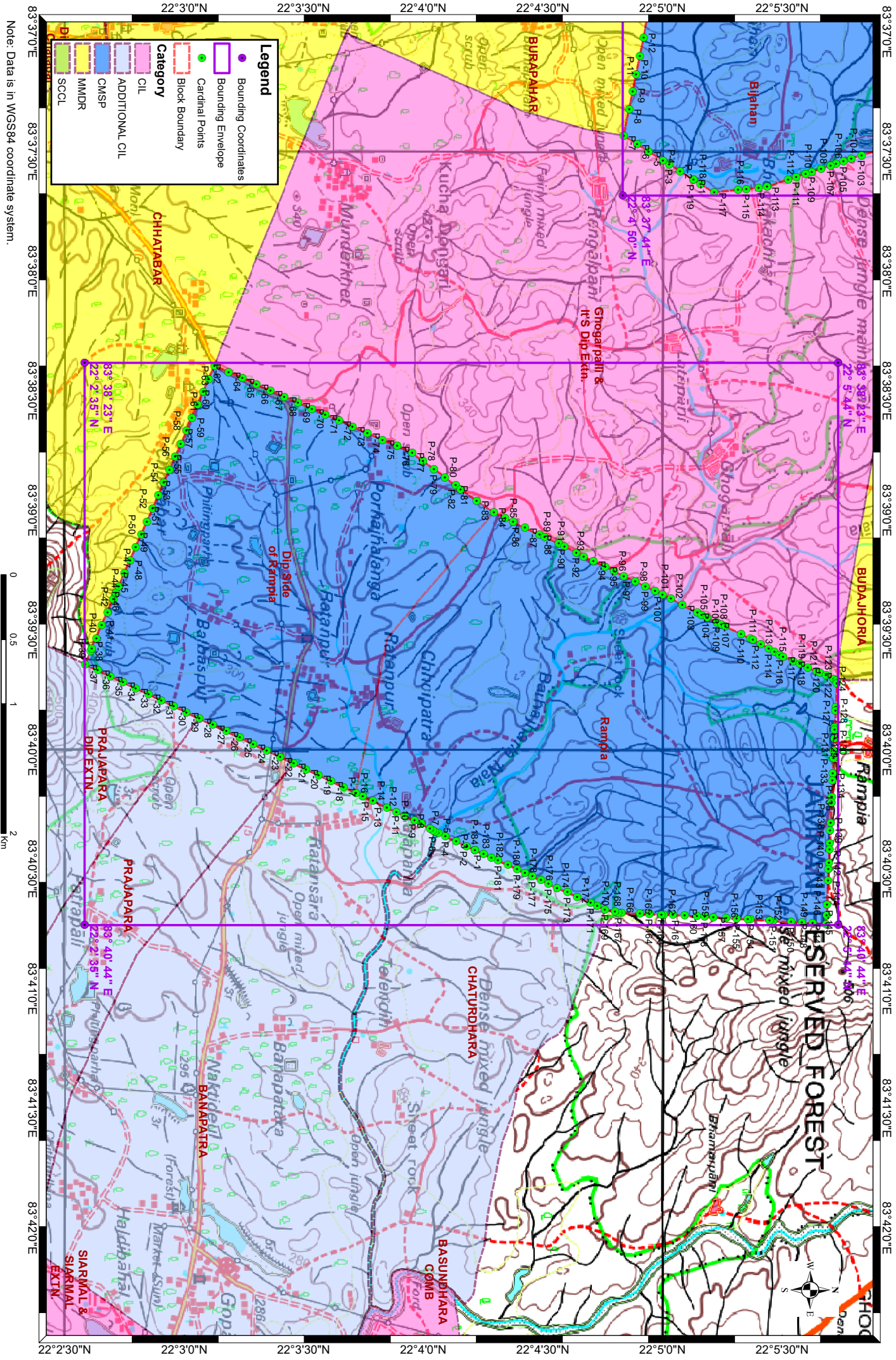
1. The above data is compiled from Geological Report, Mining Plan and the data furnished by the prior allottee in Annexure-I/II, as available. For clarifications with regard to above data, please refer aforesaid source documents.
2. The boundary of the block has been taken from GR after conversion to WGS84 system by feature matching. The block boundary is provisional and the cardinal points, bounding co-ordinates are approximate.
3. There may be a difference in area in the shape file and GR. Area in the shape file is based on feature mapped plan of the block as given in the GR. So, the area is tentative and field DGPS survey is required to ascertain the exact area.

Disclaimer:

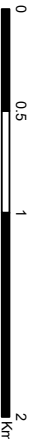
1. The analysis is done on Beta-version (Trial Version) of Decision Support System (DSS) of FSI / MOEF.
2. The Decision Rules for various parameters of this DSS System are controlled by FSI.
3. CMPDI only runs this DSS to obtain the status of any block based on these Decision Rules.
4. The database of the Decision Rules is updated by FSI from time to time.
5. CMPDI does not own any responsibility for variation in the results which are based on the Decision Rules of the FSI DSS in case of any updation of the database at FSI end.
6. ESZ analysis and tiger habitat/ corridor given here is based on the information available in public domain. Bidders are encouraged to verify this information and any other information additionally available.

Rampia & Dipside of Rampia Block, Ib Valley Coalfield

FOR INTERNAL/RESTRICTED USE ONLY



Note: Data is in WGS84 coordinate system.



83°37'0"E 83°37'30"E 83°38'0"E 83°38'30"E 83°39'0"E 83°39'30"E 83°40'0"E 83°40'30"E 83°41'0"E 83°41'30"E 83°42'0"E

22°2'30"N 22°3'0"N 22°3'30"N 22°4'0"N 22°4'30"N 22°5'0"N 22°5'30"N

Provisional Cardinal Points for Rampa and Dipside of Rampa Block

| POINT NO | Longitude (WGS84) | Latitude (WGS84) |
|----------|-------------------|------------------|
| P-1 | 83° 40' 25.144" E | 22° 4' 12.928" N |
| P-2 | 83° 40' 24.163" E | 22° 4' 10.791" N |
| P-3 | 83° 40' 22.948" E | 22° 4' 8.128" N |
| P-4 | 83° 40' 21.716" E | 22° 4' 5.462" N |
| P-5 | 83° 40' 20.935" E | 22° 4' 3.757" N |
| P-6 | 83° 40' 20.535" E | 22° 4' 2.912" N |
| P-7 | 83° 40' 20.188" E | 22° 4' 2.355" N |
| P-8 | 83° 40' 19.762" E | 22° 4' 1.614" N |
| P-9 | 83° 40' 18.528" E | 22° 3' 59.430" N |
| P-10 | 83° 40' 17.739" E | 22° 3' 57.723" N |
| P-11 | 83° 40' 16.567" E | 22° 3' 55.242" N |
| P-12 | 83° 40' 15.586" E | 22° 3' 53.181" N |
| P-13 | 83° 40' 14.501" E | 22° 3' 50.830" N |
| P-14 | 83° 40' 12.861" E | 22° 3' 47.310" N |
| P-15 | 83° 40' 11.663" E | 22° 3' 44.756" N |
| P-16 | 83° 40' 10.847" E | 22° 3' 43.049" N |
| P-17 | 83° 40' 9.363" E | 22° 3' 39.919" N |
| P-18 | 83° 40' 7.870" E | 22° 3' 36.789" N |
| P-19 | 83° 40' 6.386" E | 22° 3' 33.660" N |
| P-20 | 83° 40' 4.902" E | 22° 3' 30.530" N |
| P-21 | 83° 40' 3.409" E | 22° 3' 27.400" N |
| P-22 | 83° 40' 1.804" E | 22° 3' 24.018" N |
| P-23 | 83° 40' 0.189" E | 22° 3' 20.636" N |
| P-24 | 83° 39' 58.584" E | 22° 3' 17.254" N |
| P-25 | 83° 39' 56.978" E | 22° 3' 13.872" N |
| P-26 | 83° 39' 55.364" E | 22° 3' 10.490" N |
| P-27 | 83° 39' 53.759" E | 22° 3' 7.105" N |
| P-28 | 83° 39' 52.144" E | 22° 3' 3.723" N |
| P-29 | 83° 39' 50.634" E | 22° 3' 0.543" N |
| P-30 | 83° 39' 49.116" E | 22° 2' 57.360" N |
| P-31 | 83° 39' 47.606" E | 22° 2' 54.179" N |
| P-32 | 83° 39' 46.087" E | 22° 2' 50.997" N |
| P-33 | 83° 39' 44.577" E | 22° 2' 47.816" N |
| P-34 | 83° 39' 43.059" E | 22° 2' 44.633" N |
| P-35 | 83° 39' 41.549" E | 22° 2' 41.452" N |
| P-36 | 83° 39' 40.030" E | 22° 2' 38.270" N |
| P-37 | 83° 39' 38.521" E | 22° 2' 35.087" N |
| P-38 | 83° 39' 35.264" E | 22° 2' 36.499" N |
| P-39 | 83° 39' 34.582" E | 22° 2' 36.794" N |
| P-40 | 83° 39' 32.015" E | 22° 2' 37.913" N |
| P-41 | 83° 39' 28.758" E | 22° 2' 39.325" N |
| P-42 | 83° 39' 25.510" E | 22° 2' 40.737" N |
| P-43 | 83° 39' 22.253" E | 22° 2' 42.149" N |
| P-44 | 83° 39' 20.856" E | 22° 2' 42.757" N |
| P-45 | 83° 39' 20.585" E | 22° 2' 42.873" N |
| P-46 | 83° 39' 19.005" E | 22° 2' 43.560" N |
| P-47 | 83° 39' 15.747" E | 22° 2' 44.972" N |

Provisional Cardinal Points for Rampia and Dipside of Rampia Block

| | | |
|------|-------------------|------------------|
| P-48 | 83° 39' 12.499" E | 22° 2' 46.384" N |
| P-49 | 83° 39' 9.251" E | 22° 2' 47.796" N |
| P-50 | 83° 39' 5.994" E | 22° 2' 49.208" N |
| P-51 | 83° 39' 2.745" E | 22° 2' 50.619" N |
| P-52 | 83° 38' 59.488" E | 22° 2' 52.031" N |
| P-53 | 83° 38' 56.239" E | 22° 2' 53.443" N |
| P-54 | 83° 38' 52.982" E | 22° 2' 54.855" N |
| P-55 | 83° 38' 49.734" E | 22° 2' 56.266" N |
| P-56 | 83° 38' 46.476" E | 22° 2' 57.680" N |
| P-57 | 83° 38' 43.228" E | 22° 2' 59.092" N |
| P-58 | 83° 38' 39.971" E | 22° 3' 0.503" N |
| P-59 | 83° 38' 36.722" E | 22° 3' 1.915" N |
| P-60 | 83° 38' 33.473" E | 22° 3' 3.326" N |
| P-61 | 83° 38' 30.216" E | 22° 3' 4.738" N |
| P-62 | 83° 38' 26.967" E | 22° 3' 6.150" N |
| P-63 | 83° 38' 23.710" E | 22° 3' 7.561" N |
| P-64 | 83° 38' 20.462" E | 22° 3' 8.973" N |
| P-65 | 83° 38' 17.214" E | 22° 3' 10.384" N |
| P-66 | 83° 38' 13.967" E | 22° 3' 11.796" N |
| P-67 | 83° 38' 10.719" E | 22° 3' 13.208" N |
| P-68 | 83° 38' 7.471" E | 22° 3' 14.620" N |
| P-69 | 83° 38' 4.223" E | 22° 3' 16.031" N |
| P-70 | 83° 38' 0.975" E | 22° 3' 17.443" N |
| P-71 | 83° 38' 0.000" E | 22° 3' 18.855" N |
| P-72 | 83° 38' 0.000" E | 22° 3' 20.266" N |
| P-73 | 83° 38' 0.000" E | 22° 3' 21.678" N |
| P-74 | 83° 38' 0.000" E | 22° 3' 23.090" N |
| P-75 | 83° 38' 0.000" E | 22° 3' 24.502" N |
| P-76 | 83° 38' 0.000" E | 22° 3' 25.914" N |
| P-77 | 83° 38' 0.000" E | 22° 3' 27.326" N |
| P-78 | 83° 38' 0.000" E | 22° 3' 28.738" N |
| P-79 | 83° 38' 0.000" E | 22° 3' 30.150" N |
| P-80 | 83° 38' 0.000" E | 22° 3' 31.562" N |
| P-81 | 83° 38' 0.000" E | 22° 3' 32.974" N |
| P-82 | 83° 38' 0.000" E | 22° 3' 34.386" N |
| P-83 | 83° 38' 0.000" E | 22° 3' 35.798" N |
| P-84 | 83° 39' 0.473" E | 22° 4' 0.210" N |
| P-85 | 83° 39' 1.870" E | 22° 4' 1.622" N |
| P-86 | 83° 39' 3.267" E | 22° 4' 3.034" N |
| P-87 | 83° 39' 4.664" E | 22° 4' 4.446" N |
| P-88 | 83° 39' 6.062" E | 22° 4' 5.858" N |
| P-89 | 83° 39' 7.459" E | 22° 4' 7.270" N |
| P-90 | 83° 39' 8.856" E | 22° 4' 8.682" N |
| P-91 | 83° 39' 10.253" E | 22° 4' 10.094" N |
| P-92 | 83° 39' 11.650" E | 22° 4' 11.506" N |
| P-93 | 83° 39' 13.047" E | 22° 4' 12.918" N |
| P-94 | 83° 39' 14.444" E | 22° 4' 14.330" N |
| P-95 | 83° 39' 15.841" E | 22° 4' 15.742" N |

Provisional Cardinal Points for Rampia and Dipside of Rampia Block

| | | |
|-------|-------------------|------------------|
| P-96 | 83° 39' 15.184" E | 22° 4' 47.814" N |
| P-97 | 83° 39' 16.416" E | 22° 4' 50.283" N |
| P-98 | 83° 39' 17.770" E | 22° 4' 53.111" N |
| P-99 | 83° 39' 18.986" E | 22° 4' 55.639" N |
| P-100 | 83° 39' 20.201" E | 22° 4' 58.116" N |
| P-101 | 83° 39' 21.130" E | 22° 4' 59.982" N |
| P-102 | 83° 39' 22.102" E | 22° 5' 2.025" N |
| P-103 | 83° 39' 23.665" E | 22° 5' 4.901" N |
| P-104 | 83° 39' 25.627" E | 22° 5' 8.672" N |
| P-105 | 83° 39' 26.183" E | 22° 5' 9.753" N |
| P-106 | 83° 39' 26.817" E | 22° 5' 11.094" N |
| P-107 | 83° 39' 28.058" E | 22° 5' 13.616" N |
| P-108 | 83° 39' 28.570" E | 22° 5' 14.712" N |
| P-109 | 83° 39' 29.074" E | 22° 5' 15.732" N |
| P-110 | 83° 39' 30.975" E | 22° 5' 19.652" N |
| P-111 | 83° 39' 32.103" E | 22° 5' 21.967" N |
| P-112 | 83° 39' 32.398" E | 22° 5' 22.617" N |
| P-113 | 83° 39' 33.484" E | 22° 5' 24.558" N |
| P-114 | 83° 39' 34.613" E | 22° 5' 26.577" N |
| P-115 | 83° 39' 35.447" E | 22° 5' 28.051" N |
| P-116 | 83° 39' 36.159" E | 22° 5' 29.362" N |
| P-117 | 83° 39' 36.629" E | 22° 5' 30.202" N |
| P-118 | 83° 39' 37.739" E | 22° 5' 32.707" N |
| P-119 | 83° 39' 38.468" E | 22° 5' 34.364" N |
| P-120 | 83° 39' 39.362" E | 22° 5' 36.407" N |
| P-121 | 83° 39' 40.325" E | 22° 5' 38.631" N |
| P-122 | 83° 39' 40.663" E | 22° 5' 39.376" N |
| P-123 | 83° 39' 41.349" E | 22° 5' 40.971" N |
| P-124 | 83° 39' 42.199" E | 22° 5' 42.896" N |
| P-125 | 83° 39' 42.555" E | 22° 5' 43.681" N |
| P-126 | 83° 39' 43.392" E | 22° 5' 43.653" N |
| P-127 | 83° 39' 49.196" E | 22° 5' 43.399" N |
| P-128 | 83° 39' 50.226" E | 22° 5' 43.344" N |
| P-129 | 83° 39' 54.371" E | 22° 5' 43.166" N |
| P-130 | 83° 39' 54.999" E | 22° 5' 43.145" N |
| P-131 | 83° 39' 57.224" E | 22° 5' 43.046" N |
| P-132 | 83° 40' 0.174" E | 22° 5' 42.908" N |
| P-133 | 83° 40' 2.207" E | 22° 5' 42.835" N |
| P-134 | 83° 40' 5.968" E | 22° 5' 42.660" N |
| P-135 | 83° 40' 7.644" E | 22° 5' 42.582" N |
| P-136 | 83° 40' 11.859" E | 22° 5' 42.404" N |
| P-137 | 83° 40' 13.281" E | 22° 5' 42.334" N |
| P-138 | 83° 40' 18.299" E | 22° 5' 42.120" N |
| P-139 | 83° 40' 20.263" E | 22° 5' 42.027" N |
| P-140 | 83° 40' 23.483" E | 22° 5' 41.887" N |
| P-141 | 83° 40' 25.054" E | 22° 5' 41.819" N |
| P-142 | 83° 40' 28.413" E | 22° 5' 41.670" N |
| P-143 | 83° 40' 29.923" E | 22° 5' 41.594" N |

Provisional Cardinal Points for Rampa and Dipside of Rampa Block

| | | |
|-------|-------------------|------------------|
| P-144 | 83° 40' 32.881" E | 22° 5' 41.457" N |
| P-145 | 83° 40' 38.912" E | 22° 5' 41.202" N |
| P-146 | 83° 40' 41.538" E | 22° 5' 41.093" N |
| P-147 | 83° 40' 43.737" E | 22° 5' 40.988" N |
| P-148 | 83° 40' 43.518" E | 22° 5' 37.631" N |
| P-149 | 83° 40' 43.342" E | 22° 5' 34.904" N |
| P-150 | 83° 40' 43.182" E | 22° 5' 32.225" N |
| P-151 | 83° 40' 42.896" E | 22° 5' 27.654" N |
| P-152 | 83° 40' 42.846" E | 22° 5' 26.790" N |
| P-153 | 83° 40' 42.560" E | 22° 5' 22.018" N |
| P-154 | 83° 40' 42.510" E | 22° 5' 21.374" N |
| P-155 | 83° 40' 42.333" E | 22° 5' 18.515" N |
| P-156 | 83° 40' 42.182" E | 22° 5' 15.947" N |
| P-157 | 83° 40' 41.989" E | 22° 5' 12.716" N |
| P-158 | 83° 40' 41.872" E | 22° 5' 10.531" N |
| P-159 | 83° 40' 41.746" E | 22° 5' 8.589" N |
| P-160 | 83° 40' 41.552" E | 22° 5' 5.533" N |
| P-161 | 83° 40' 41.428" E | 22° 5' 2.567" N |
| P-162 | 83° 40' 41.338" E | 22° 5' 0.278" N |
| P-163 | 83° 40' 41.322" E | 22° 4' 59.690" N |
| P-164 | 83° 40' 41.207" E | 22° 4' 56.663" N |
| P-165 | 83° 40' 41.108" E | 22° 4' 54.260" N |
| P-166 | 83° 40' 40.918" E | 22° 4' 49.647" N |
| P-167 | 83° 40' 40.876" E | 22° 4' 48.850" N |
| P-168 | 83° 40' 40.599" E | 22° 4' 48.024" N |
| P-169 | 83° 40' 40.064" E | 22° 4' 45.538" N |
| P-170 | 83° 40' 39.152" E | 22° 4' 43.544" N |
| P-171 | 83° 40' 38.423" E | 22° 4' 41.882" N |
| P-172 | 83° 40' 36.878" E | 22° 4' 38.504" N |
| P-173 | 83° 40' 35.759" E | 22° 4' 36.083" N |
| P-174 | 83° 40' 34.613" E | 22° 4' 33.500" N |
| P-175 | 83° 40' 33.615" E | 22° 4' 31.301" N |
| P-176 | 83° 40' 32.738" E | 22° 4' 29.429" N |
| P-177 | 83° 40' 31.757" E | 22° 4' 27.304" N |
| P-178 | 83° 40' 30.872" E | 22° 4' 25.404" N |
| P-179 | 83° 40' 29.987" E | 22° 4' 23.493" N |
| P-180 | 83° 40' 28.902" E | 22° 4' 21.167" N |
| P-181 | 83° 40' 27.773" E | 22° 4' 18.691" N |
| P-182 | 83° 40' 27.027" E | 22° 4' 17.002" N |
| P-183 | 83° 40' 26.142" E | 22° 4' 15.075" N |

Note: The provisional cardinal points are in WGS84 coordinate system. These points are extracted through ArcGIS software after georeferencing of block boundary and onground DGPS survey is required to ascertain the exact location of the points.